

# MATERIAL AND COLORS

**A PAINTED STUCCO:**  
 FINISH: FINE SAND  
 MFG: BENJAMIN MOORE  
 COLOR: SMOKEY TAUPE 983

**B PAINTED STUCCO:**  
 FINISH: FINE SAND  
 MFG: BENJAMIN MOORE  
 COLOR: SQUIRREL TAIL 1476

**C BRICK VENEER:**  
 FINISH: SMOOTH  
 MFG: SUMMIT  
 COLOR: CORK GRAIN

**D PAINTED AWNING/METAL COPING:**  
 MFG: BENJAMIN MOORE  
 COLOR: IRON MOUNTAIN 2134-30

**E MULLIONS:**  
 MFG: KAWNEER  
 COLOR: BLACK

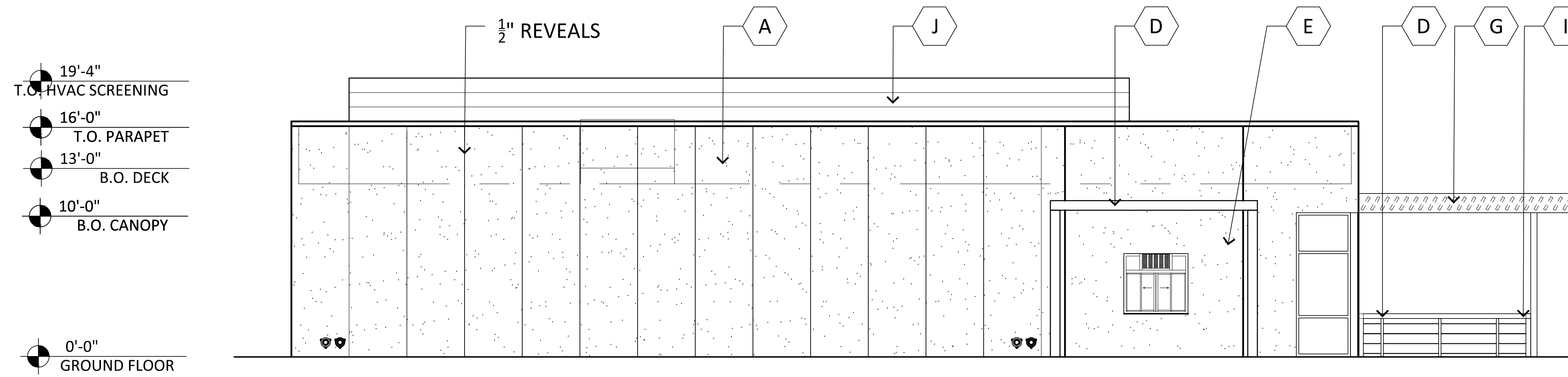
**F PAINTED STUCCO:**  
 FINISH: FINE SAND  
 MFG: BENJAMIN MOORE  
 COLOR: COPPER MOUNTAIN AC-12

**G 2X10 WOOD LOUVERS:**  
 SIZE: 2X10 REDWOOD DIMENSIONAL LUMBER  
 TYPE: GRADE A SURFACED  
 FINISH: BEST REDWOOD-1905 HEART STAIN PREMIUM SEALANT

**H PAINTED HOLLOW METAL DOOR:**  
 MFG: BENJAMIN MOORE  
 COLOR: IRON MOUNTAIN 2134-30

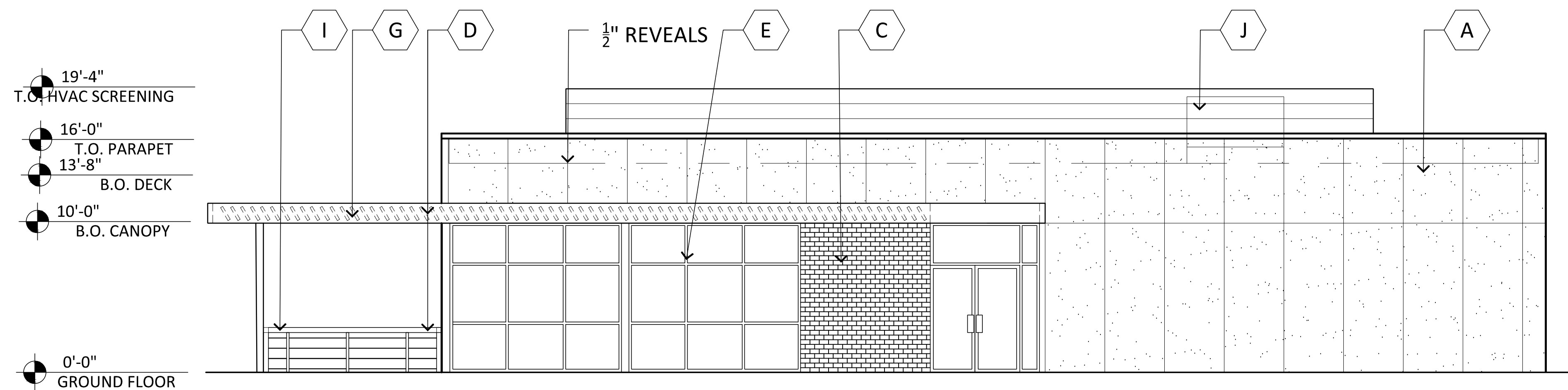
**I ALUMINUM CABLE RAILING:**  
 MFG: STAINLESS CABLE & RAILING  
 TYPE: RECTANGULAR RAIL TYPE  
 COLOR: BLACK

**F METAL PANELING:**  
 MFG: ATAS  
 COLOR: COPPER MOUNTAIN  
 SPEC: DSW 120



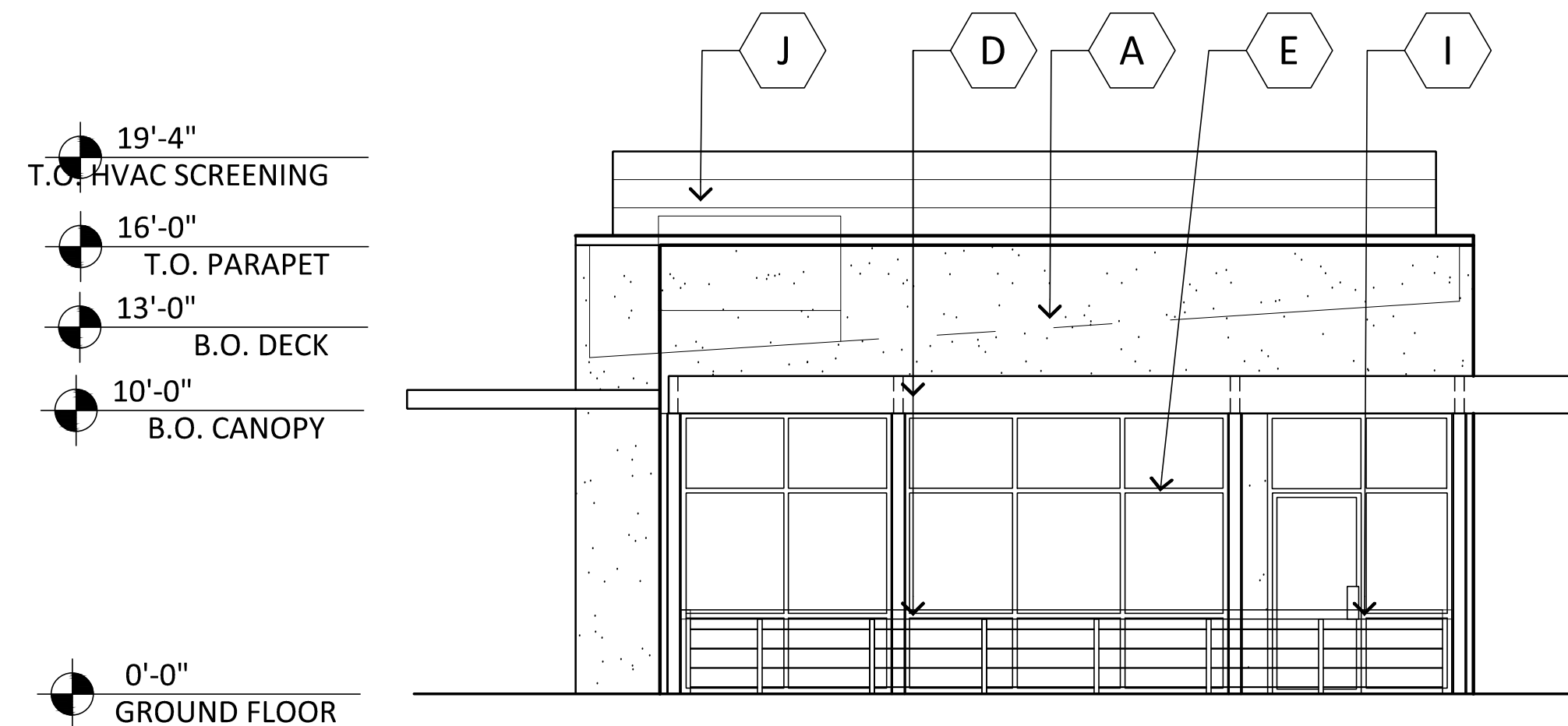
**EAST ELEVATION**

SCALE: 3/16" = 1'-0"



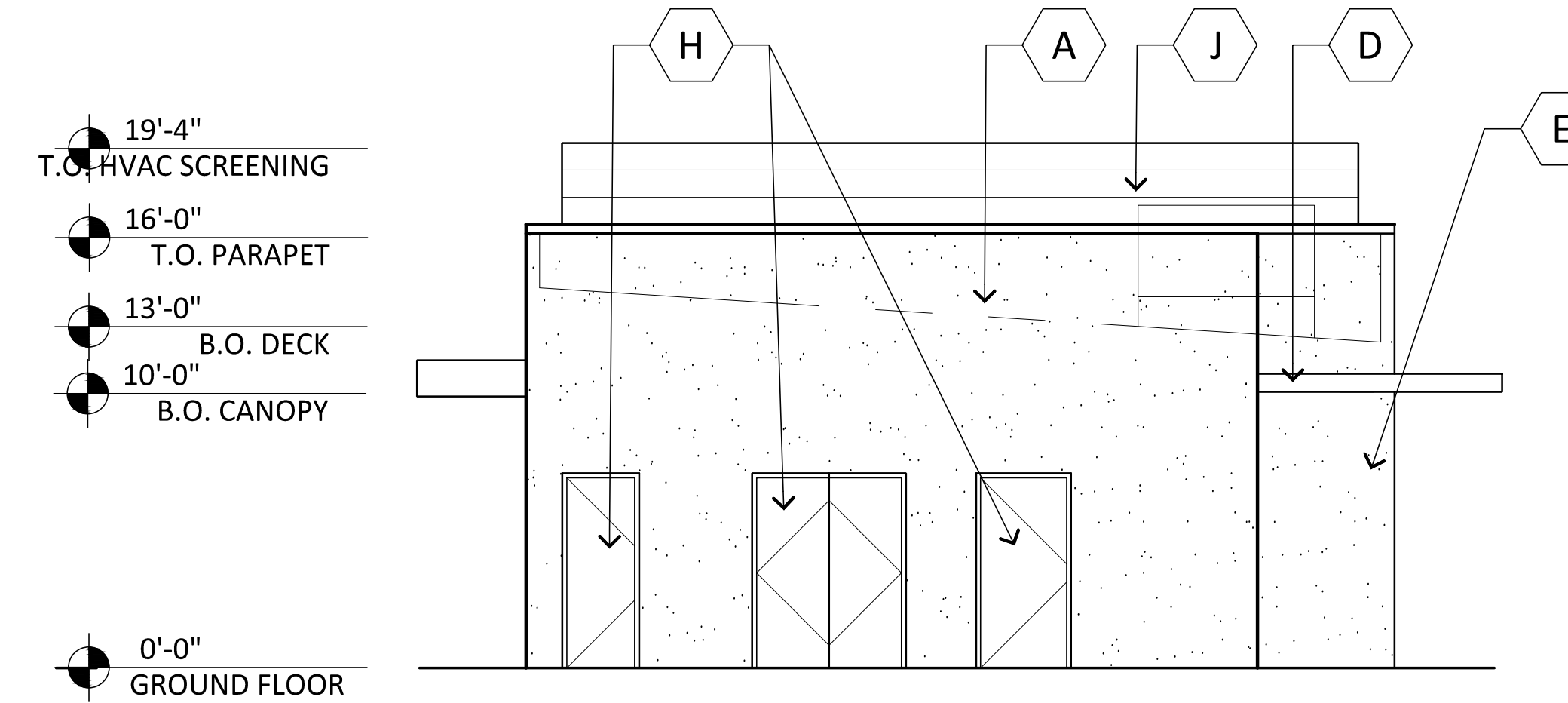
**WEST ELEVATION**

SCALE: 3/16" = 1'-0"



**NORTH ELEVATION**

SCALE: 3/16" = 1'-0"



**SOUTH ELEVATION**

SCALE: 3/16" = 1'-0"

32-DR-2021  
**STIPULATION SET  
 RETAIN FOR RECORDS  
 APPROVED**

1/6/2022  
 DATE APPROVED BY

**MCDOWELL - HAYDEN DRIVE THRU**  
 8101 E MCDOWELL ROAD SCOTTSDALE AZ 85257  
 E OF SEC OF MCDOWELL RD AND HAYDEN RD  
 DATE: 10-07-2021 (PRELIMINARY)



© 2021 R K A A  
 ARCHITECTS, INC. ALL  
 RIGHTS RESERVED.  
 THIS DRAWING IS AN  
 INSTRUMENT OF  
 SERVICE. IT IS THE  
 PROPERTY OF R K A A  
 ARCHITECTS, INC. AND  
 M A Y N O T B E  
 DUPLICATED, USED OR  
 DISCLOSED WITHOUT  
 WRITTEN PERMISSION  
 OF THE ARCHITECT.

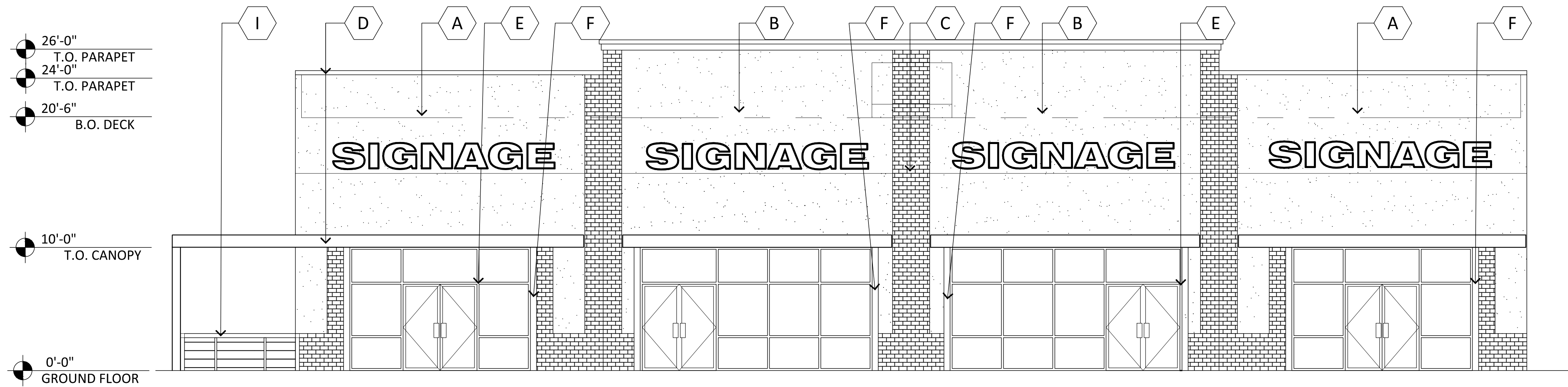
**EL-1  
 PAD A**

RKAA# 18107.00



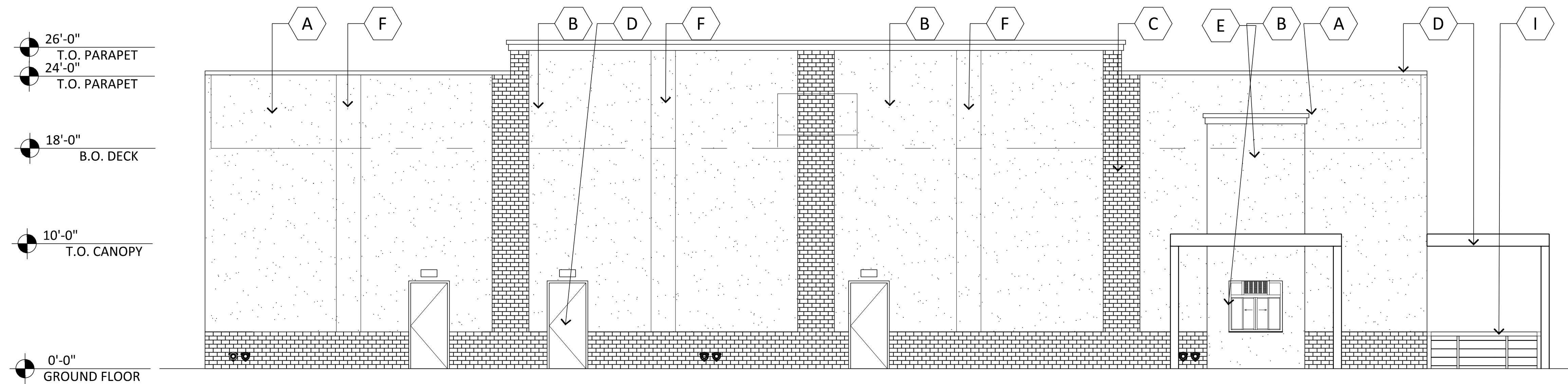
# MATERIAL AND COLORS

- A PAINTED STUCCO:**  
FINISH: FINE SAND  
MFG: BENJAMIN MOORE  
COLOR: SMOKEY TAUPE 983
- B PAINTED STUCCO:**  
FINISH: FINE SAND  
MFG: BENJAMIN MOORE  
COLOR: SQUIRREL TAIL 1476
- C BRICK VENEER:**  
FINISH: SMOOTH  
MFG: SUMMIT  
COLOR: CORK GRAIN
- D PAINTED AWNING/METAL COPING:**  
MFG: BENJAMIN MOORE  
COLOR: IRON MOUNTAIN 2134-30
- E MULLIONS:**  
MFG: KAWNEER  
COLOR: BLACK
- F PAINTED STUCCO:**  
FINISH: FINE SAND  
MFG: BENJAMIN MOORE  
COLOR: COPPER MOUNTAIN AC-12
- G 2X10 WOOD LOUVERS:**  
SIZE: 2X10 REDWOOD DIMENSIONAL LUMBER  
TYPE: GRADE A SURFACED  
FINISH: BEST REDWOOD-1905 HEART STAIN  
PREMIUM SEALANT
- H PAINTED HOLLOW METAL DOOR:**  
MFG: BENJAMIN MOORE  
COLOR: IRON MOUNTAIN 2134-30
- I ALUMINUM CABLE RAILING:**  
MFG: STAINLESS CABLE & RAILING  
TYPE: RECTANGULAR RAIL TYPE  
COLOR: BLACK
- J METAL PANELING:**  
MFG: ATAS  
COLOR: COPPER MOUNTAIN  
SPEC: DSW 120



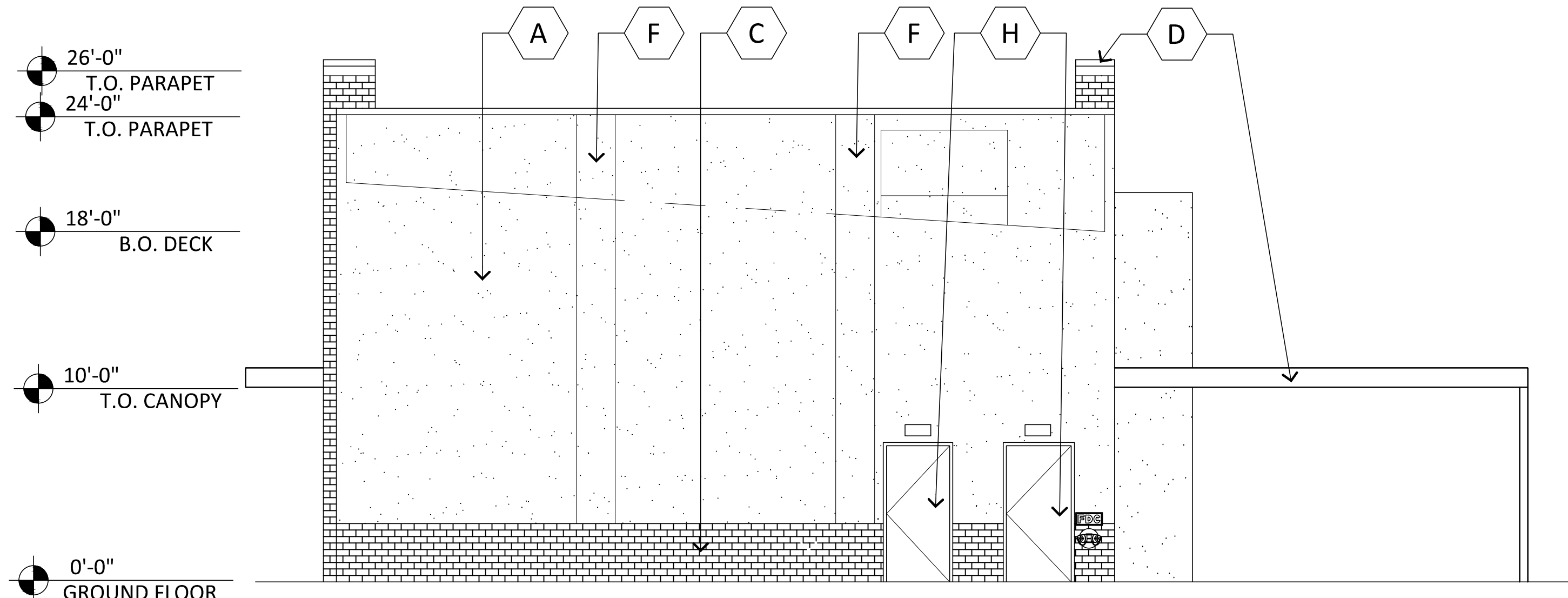
**WEST ELEVATION**

SCALE: 3/16" = 1'-0"



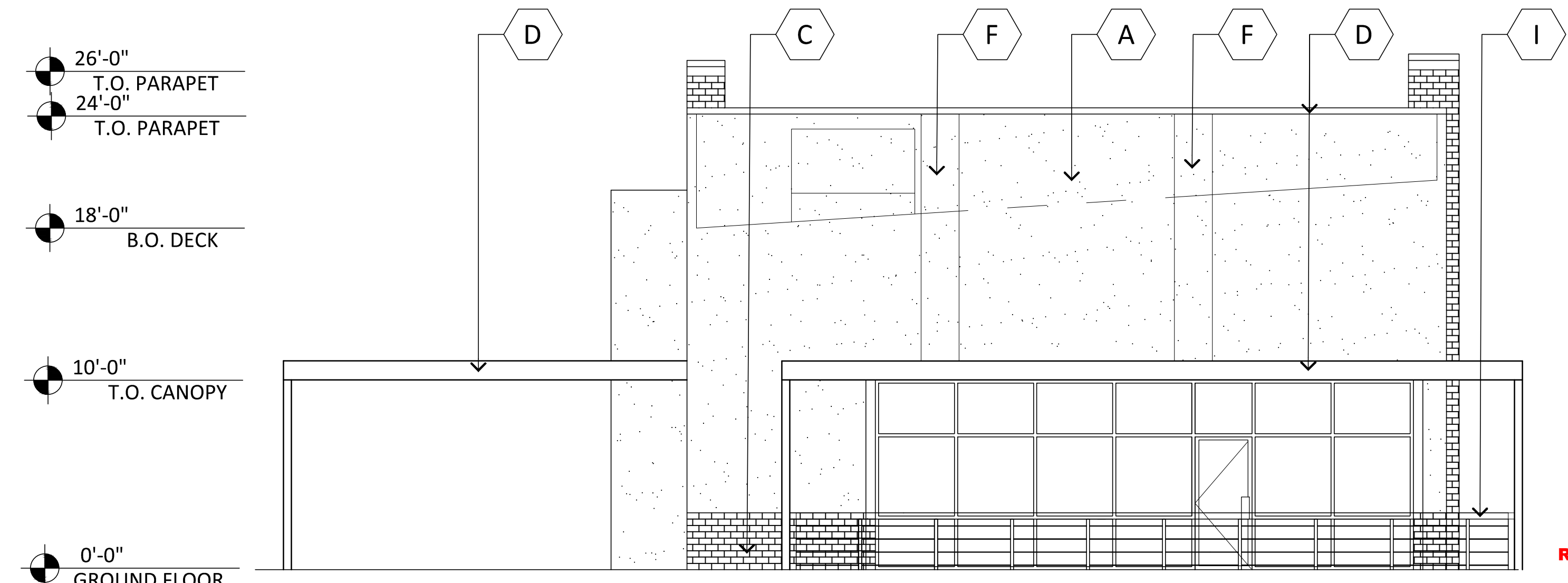
**EAST ELEVATION**

SCALE: 3/16" = 1'-0"



**SOUTH ELEVATION**

SCALE: 3/16" = 1'-0"



**NORTH ELEVATION**

SCALE: 3/16" = 1'-0"

32-DR-2021  
STIPULATION SET  
RETAIN FOR RECORDS  
APPROVED

1/6/2022  
DATE APPROVED BY

## MCDOWELL - HAYDEN MULTI-TENANT

8101 E MCDOWELL ROAD SCOTTSDALE AZ 85257  
E OF SEC OF MCDOWELL RD AND HAYDEN RD  
DATE: 10-07-2021 (PRELIMINARY)



© 2021 RKAA ARCHITECTS, INC. ALL RIGHTS RESERVED. THIS DRAWING IS AN INSTRUMENT OF SERVICE. IT IS THE PROPERTY OF RKAA ARCHITECTS, INC. AND MAY NOT BE DUPLICATED, USED OR DISCLOSED WITHOUT WRITTEN PERMISSION OF THE ARCHITECT.

EL-2  
PAD B

RKAA# 18107.00



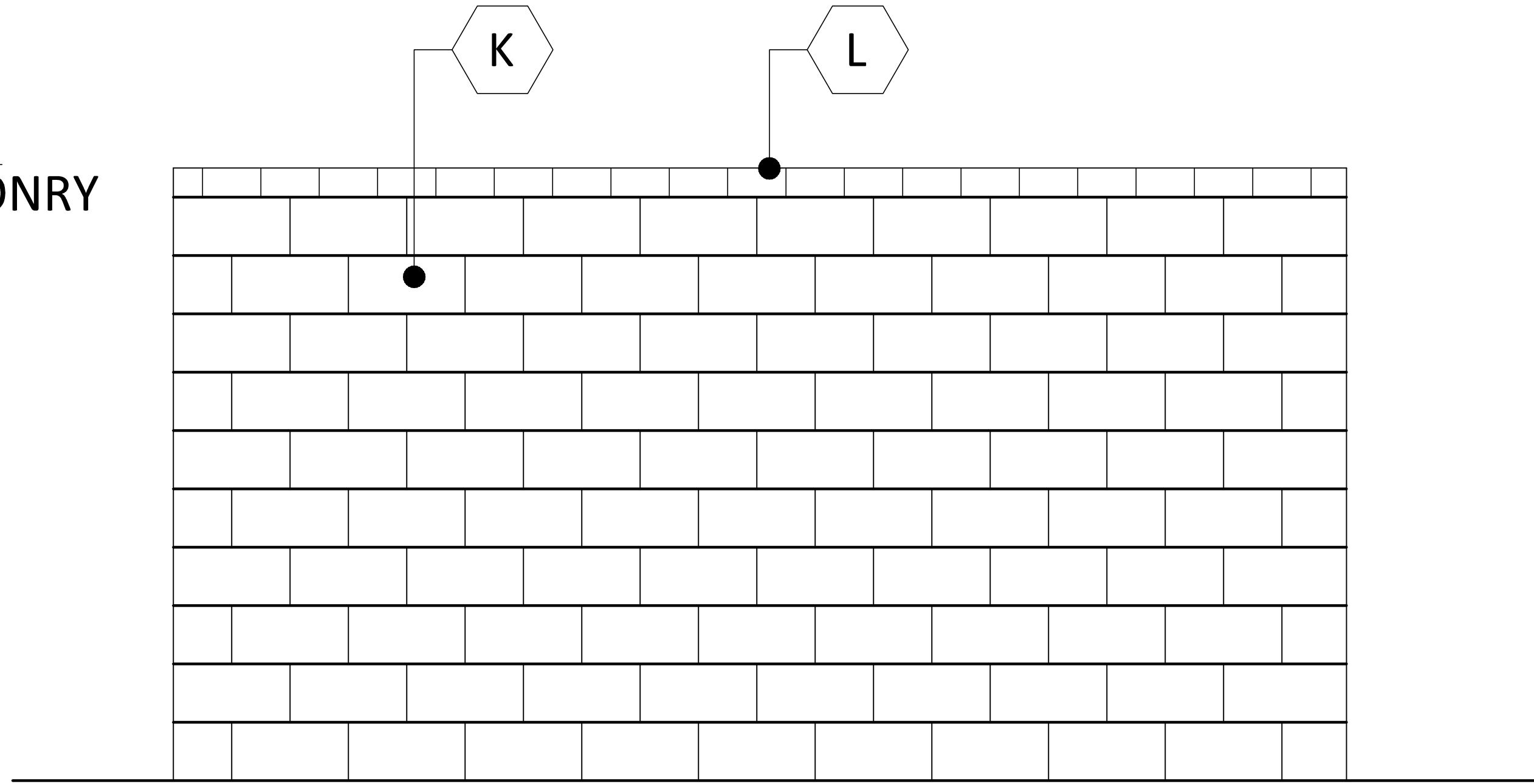
# MATERIAL AND COLORS

**H PAINTED HOLLOW METAL DOOR:**  
 MFG: BENJAMIN MOORE  
 COLOR: IRON MOUNTAIN 2134-30

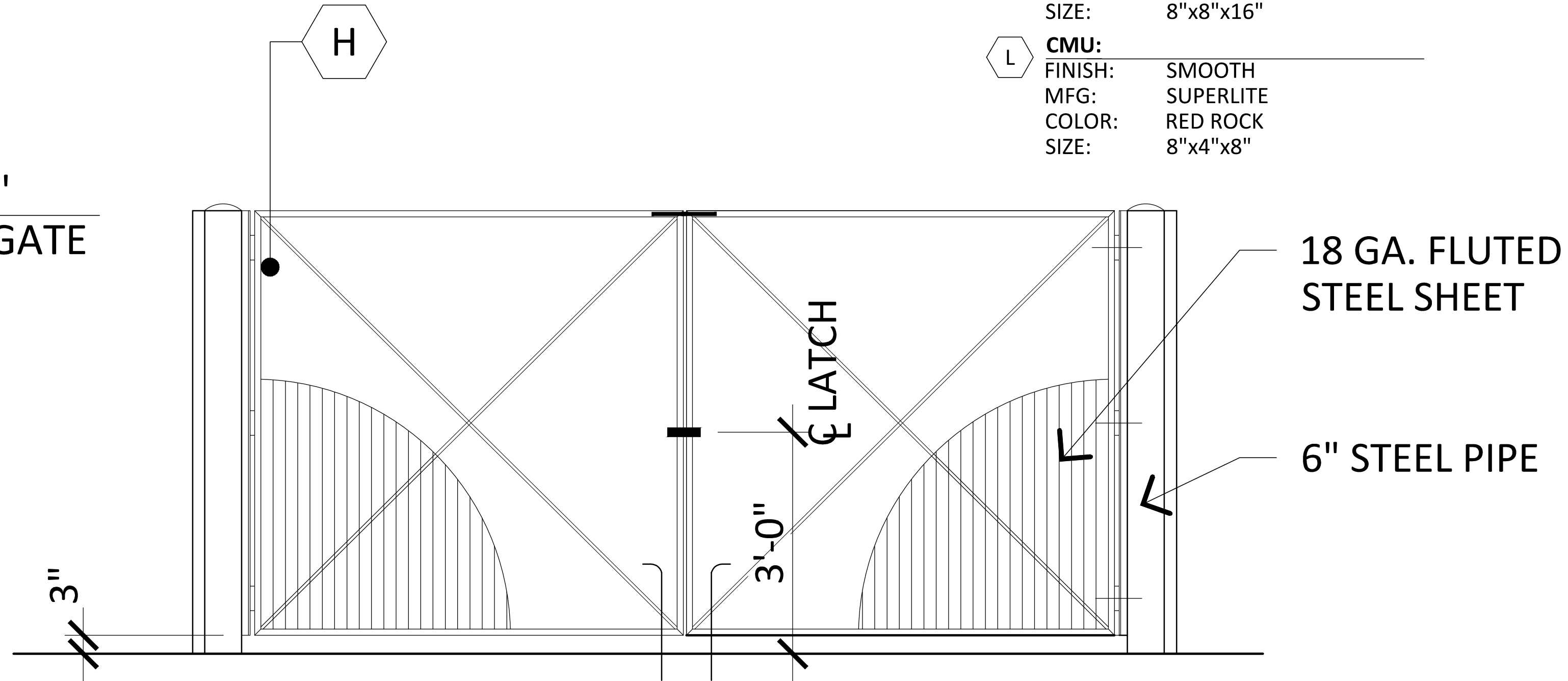
**K CMU:**  
 FINISH: SMOOTH  
 MFG: SUPERLITE  
 COLOR: BONE  
 SIZE: 8"x8"x16"

**L CMU:**  
 FINISH: SMOOTH  
 MFG: SUPERLITE  
 COLOR: RED ROCK  
 SIZE: 8"x4"x8"

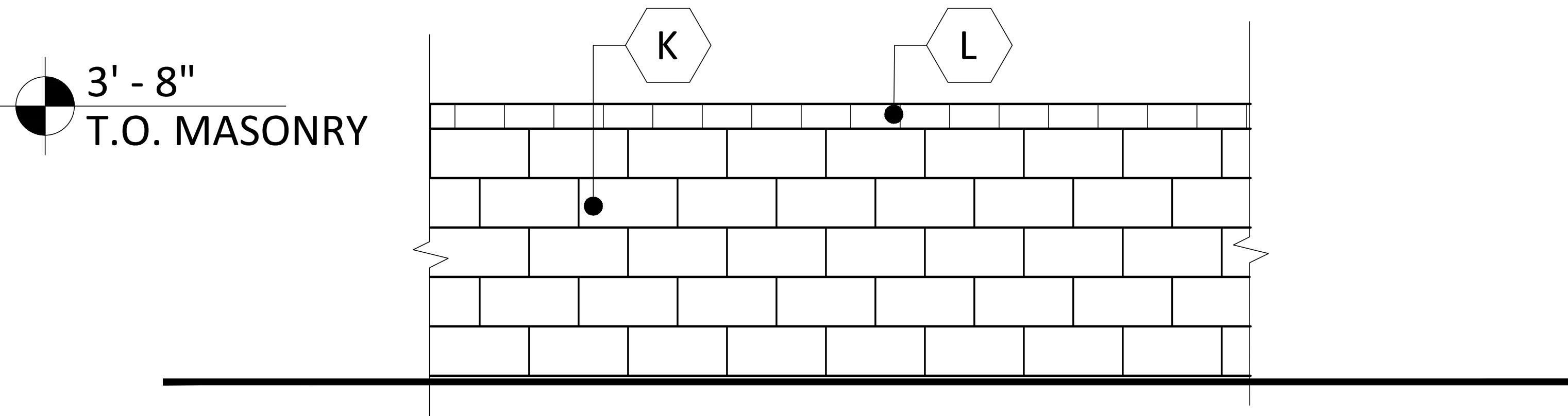
7' - 0"  
 T.O. MASONRY



6' - 0"  
 T.O. GATE

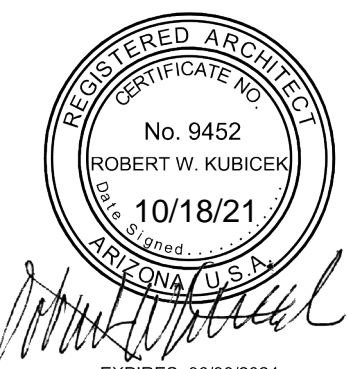


3' - 8"  
 T.O. MASONRY



32-DR-2021  
 STIPULATION SET  
 RETAIN FOR RECORDS  
 APPROVED  
 1/6/2022  
 DATE APPROVED BY

**MCDOWELL - HAYDEN MULTI-TENANT**  
 8101 E MCDOWELL ROAD SCOTTSDALE AZ 85257  
 E OF SEC OF MCDOWELL RD AND HAYDEN RD  
 DATE: 10-07-2021 (PRELIMINARY)



© 2021 RKAA ARCHITECTS, INC. ALL RIGHTS RESERVED. THIS DRAWING IS AN INSTRUMENT OF SERVICE. IT IS THE PROPERTY OF RKAA ARCHITECTS, INC. AND MAY NOT BE DUPLICATED, USED OR DISCLOSED WITHOUT WRITTEN PERMISSION OF THE ARCHITECT.

**EL-3**  
 SITE DETAILS  
 RKAA# 18107.00



# MATERIAL AND COLORS

**A PAINTED STUCCO:**  
 FINISH: FINE SAND  
 MFG: BENJAMIN MOORE  
 COLOR: SMOKEY TAUPE 983

**B PAINTED STUCCO:**  
 FINISH: FINE SAND  
 MFG: BENJAMIN MOORE  
 COLOR: SQUIRREL TAIL 1476

**C BRICK VENEER:**  
 FINISH: SMOOTH  
 MFG: SUMMIT  
 COLOR: CORK GRAIN

**D PAINTED AWNING/METAL COPING:**  
 MFG: BENJAMIN MOORE  
 COLOR: IRON MOUNTAIN 2134-30

**E MULLIONS:**  
 MFG: KAWNEER  
 COLOR: BLACK

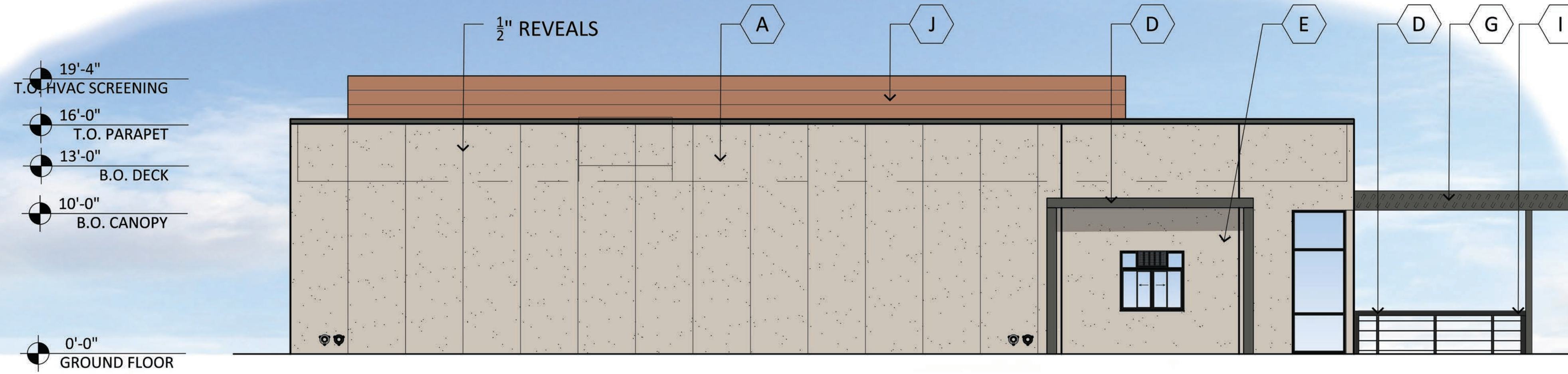
**F PAINTED STUCCO:**  
 FINISH: FINE SAND  
 MFG: BENJAMIN MOORE  
 COLOR: COPPER MOUNTAIN AC-12

**G 2X10 WOOD LOUVERS:**  
 SIZE: 2X10 REDWOOD DIMENSIONAL LUMBER  
 TYPE: GRADE A SURFACED  
 FINISH: BEST REDWOOD-1905 HEART STAIN PREMIUM SEALANT

**H PAINTED HOLLOW METAL DOOR:**  
 MFG: BENJAMIN MOORE  
 COLOR: IRON MOUNTAIN 2134-30

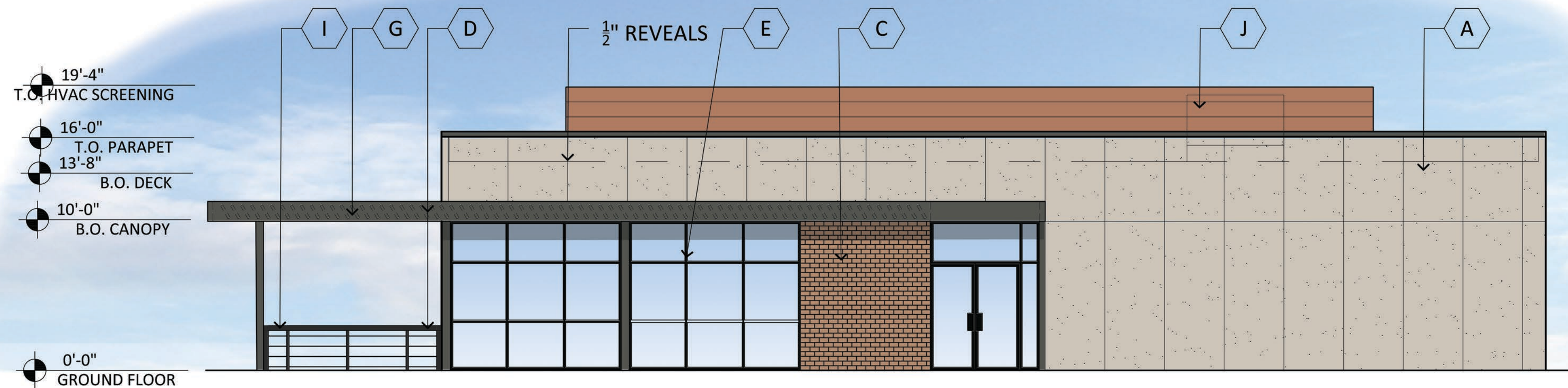
**I ALUMINUM CABLE RAILING:**  
 MFG: STAINLESS CABLE & RAILING  
 TYPE: RECTANGULAR RAIL TYPE  
 COLOR: BLACK

**F METAL PANELING:**  
 MFG: ATAS  
 COLOR: COPPER MOUNTAIN  
 SPEC: DSW 120



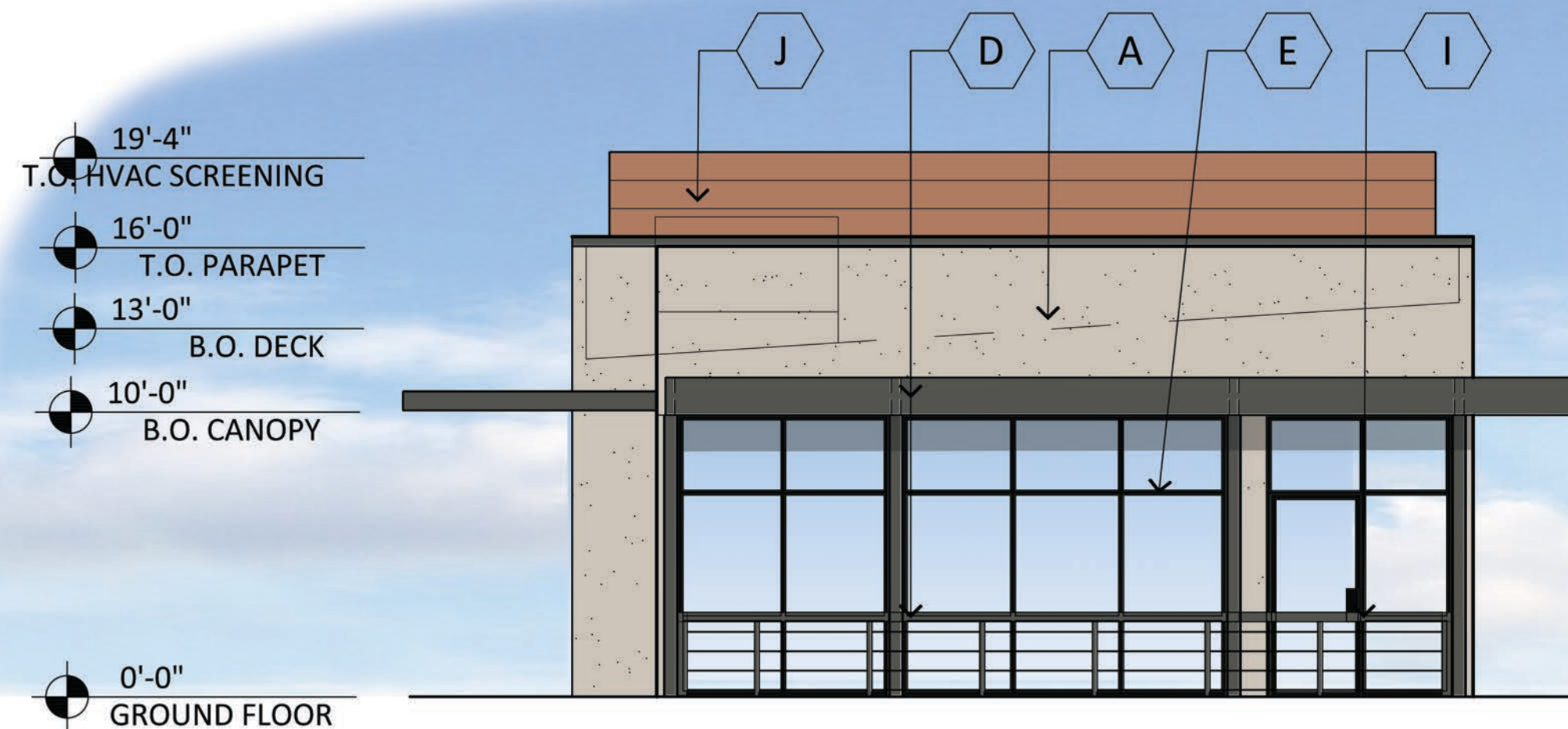
**EAST ELEVATION**

SCALE: 3/16" = 1'-0"



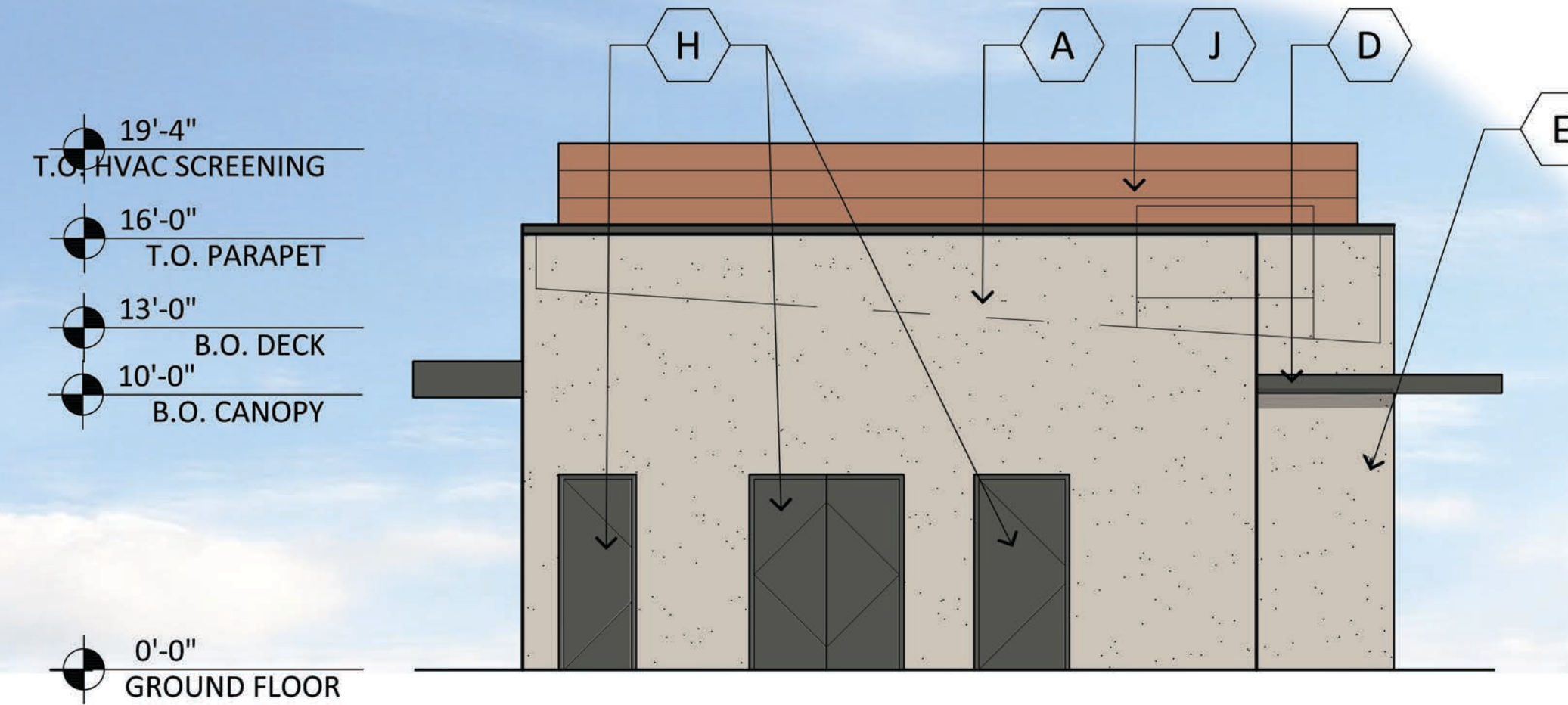
**WEST ELEVATION**

SCALE: 3/16" = 1'-0"



**NORTH ELEVATION**

SCALE: 3/16" = 1'-0"



**SOUTH ELEVATION**

SCALE: 3/16" = 1'-0"

32-DR-2021  
**STIPULATION SET**  
**RETAIN FOR RECORDS**  
**APPROVED**  
 1/6/2022  
 DATE APPROVED BY

**MCDOWELL - HAYDEN DRIVE THRU**  
 8101 E MCDOWELL ROAD SCOTTSDALE AZ 85257  
 E OF SEC OF MCDOWELL RD AND HAYDEN RD  
 DATE: 10-07-2021 (PRELIMINARY)



© 2021 R K A A ARCHITECTS, INC. ALL RIGHTS RESERVED. THIS DRAWING IS AN INSTRUMENT OF SERVICE. IT IS THE PROPERTY OF R K A A ARCHITECTS, INC. AND MAY NOT BE DUPLICATED, USED OR DISCLOSED WITHOUT WRITTEN PERMISSION OF THE ARCHITECT.

**EL-1**  
**PAD A**  
 R K A A # 18107.00



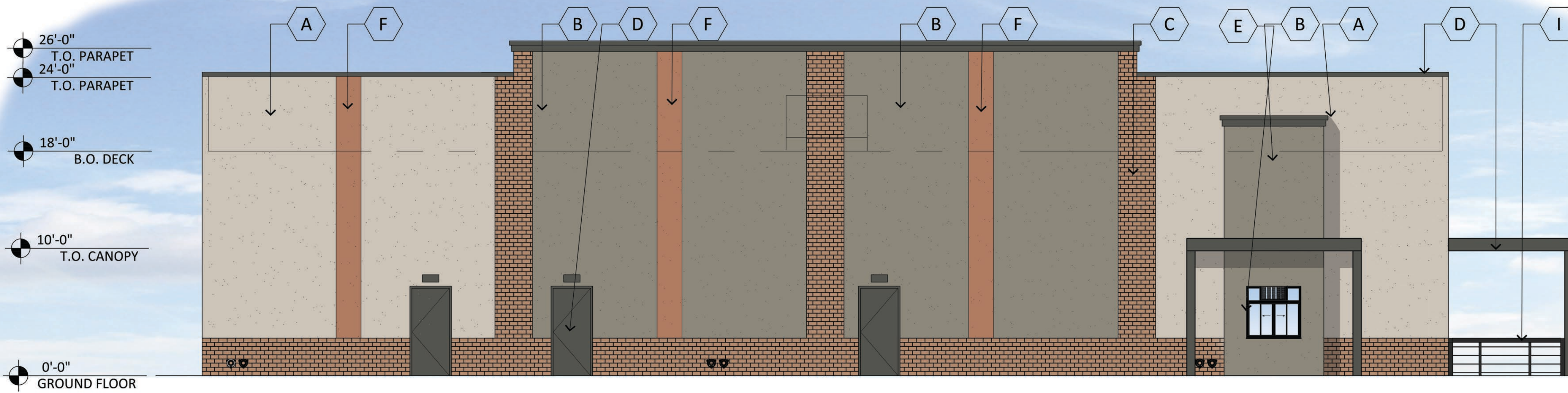
# MATERIAL AND COLORS

- A PAINTED STUCCO:**  
FINISH: FINE SAND  
MFG: BENJAMIN MOORE  
COLOR: SMOKEY TAUPE 983
- B PAINTED STUCCO:**  
FINISH: FINE SAND  
MFG: BENJAMIN MOORE  
COLOR: SQUIRREL TAIL 1476
- C BRICK VENEER:**  
FINISH: SMOOTH  
MFG: SUMMIT  
COLOR: CORK GRAIN
- D PAINTED AWNING/METAL COPING:**  
MFG: BENJAMIN MOORE  
COLOR: IRON MOUNTAIN 2134-30
- E MULLIONS:**  
MFG: KAWNEER  
COLOR: BLACK
- F PAINTED STUCCO:**  
FINISH: FINE SAND  
MFG: BENJAMIN MOORE  
COLOR: COPPER MOUNTAIN AC-12
- G 2X10 WOOD LOUVERS:**  
SIZE: 2X10 REDWOOD DIMENSIONAL LUMBER  
TYPE: GRADE A SURFACED  
FINISH: BEST REDWOOD-1905 HEART STAIN  
PREMIUM SEALANT
- H PAINTED HOLLOW METAL DOOR:**  
MFG: BENJAMIN MOORE  
COLOR: IRON MOUNTAIN 2134-30
- I ALUMINUM CABLE RAILING:**  
MFG: STAINLESS CABLE & RAILING  
TYPE: RECTANGULAR RAIL TYPE  
COLOR: BLACK
- J METAL PANELING:**  
MFG: ATAS  
COLOR: COPPER MOUNTAIN  
SPEC: DSW 120



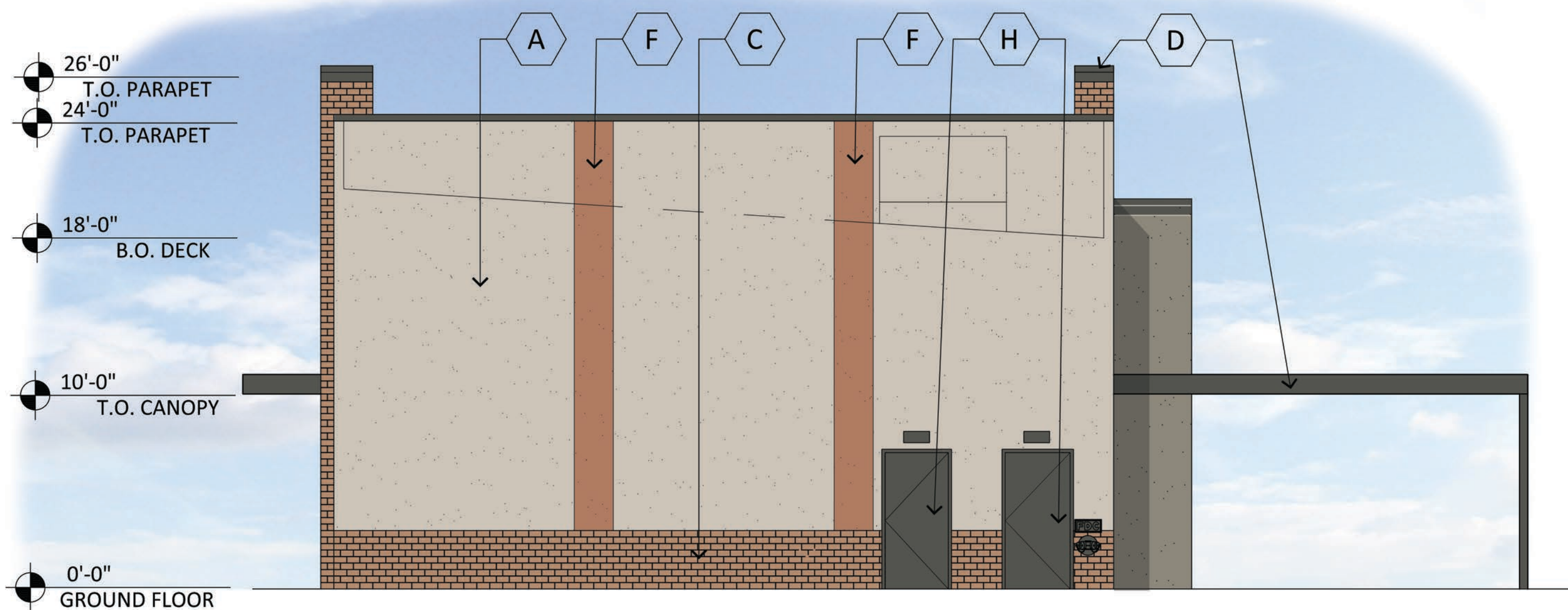
**WEST ELEVATION**

SCALE: 3/16" = 1'-0"



**EAST ELEVATION**

SCALE: 3/16" = 1'-0"



**SOUTH ELEVATION**

SCALE: 3/16" = 1'-0"



**NORTH ELEVATION**

SCALE: 3/16" = 1'-0"

32-DR-2021  
STIPULATION SET  
RETAIN FOR RECORDS  
APPROVED  
DATE 1/6/2022  
APPROVED BY

## MCDOWELL - HAYDEN MULTI-TENANT

8101 E MCDOWELL ROAD SCOTTSDALE AZ 85257  
E OF SEC OF MCDOWELL RD AND HAYDEN RD  
DATE: 10-07-2021 (PRELIMINARY)



© 2021 RKA  
ARCHITECTS, INC. ALL  
RIGHTS RESERVED.  
THIS DRAWING IS AN  
INSTRUMENT OF  
SERVICE. IT IS THE  
PROPERTY OF RKA  
ARCHITECTS, INC. AND  
MAY NOT BE  
DUPLICATED, USED OR  
DISCLOSED WITHOUT  
WRITTEN PERMISSION  
OF THE ARCHITECT.

EL-2  
PAD B

RKAA# 18107.00

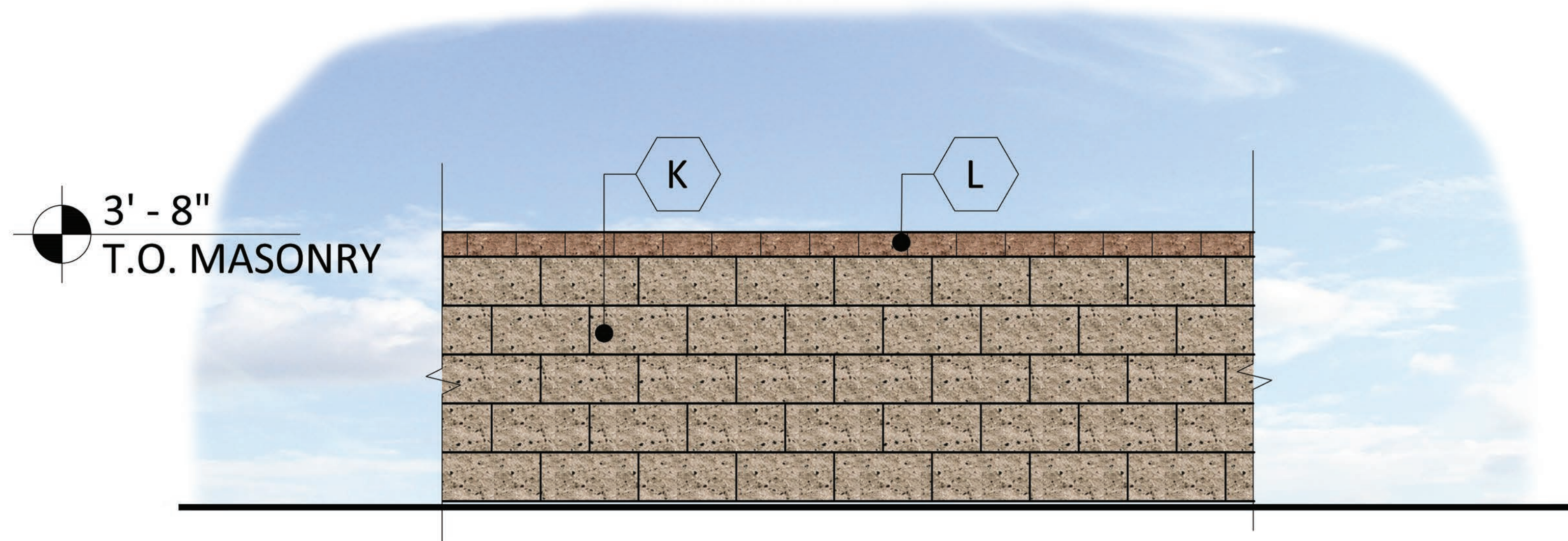
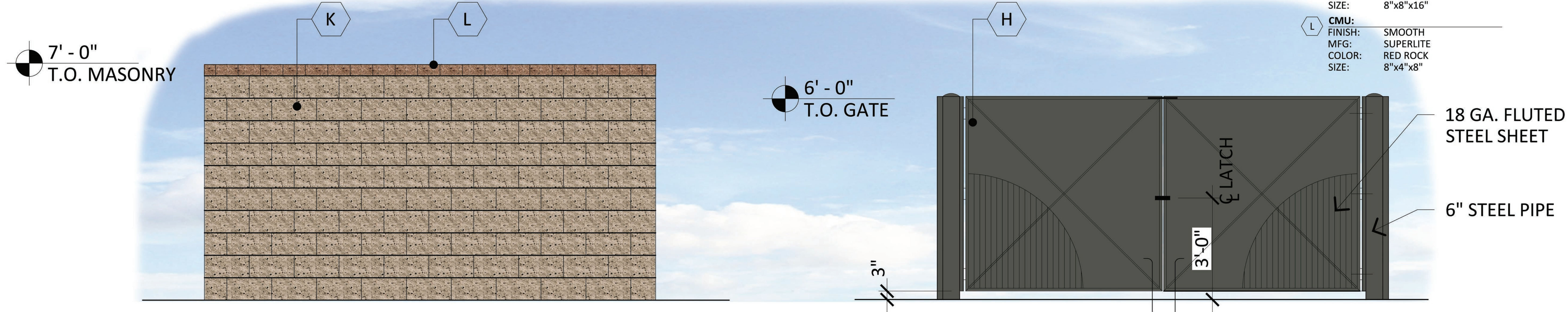


# MATERIAL AND COLORS

**H PAINTED HOLLOW METAL DOOR:**  
 MFG: BENJAMIN MOORE  
 COLOR: IRON MOUNTAIN 2134-30

**K CMU:**  
 FINISH: SMOOTH  
 MFG: SUPERLITE  
 COLOR: BONE  
 SIZE: 8"x8"x16"

**L CMU:**  
 FINISH: SMOOTH  
 MFG: SUPERLITE  
 COLOR: RED ROCK  
 SIZE: 8"x4"x8"



32-DR-2021  
**STIPULATION SET**  
**RETAIN FOR RECORDS**  
**APPROVED**  
 1/6/2022  
 DATE APPROVED BY

**MCDOWELL - HAYDEN MULTI-TENANT**  
 8101 E MCDOWELL ROAD SCOTTSDALE AZ 85257  
 E OF SEC OF MCDOWELL RD AND HAYDEN RD  
 DATE: 10-07-2021 (PRELIMINARY)



© 2021 RKA  
 ARCHITECTS, INC. ALL  
 RIGHTS RESERVED.  
 THIS DRAWING IS AN  
 INSTRUMENT OF  
 SERVICE. IT IS THE  
 PROPERTY OF RKA  
 ARCHITECTS, INC. AND  
 M A Y N O T B E  
 DUPLICATED, USED OR  
 DISCLOSED WITHOUT  
 WRITTEN PERMISSION  
 OF THE ARCHITECT.

**EL-3**  
 SITE DETAILS  
 RKA# 18107.00

