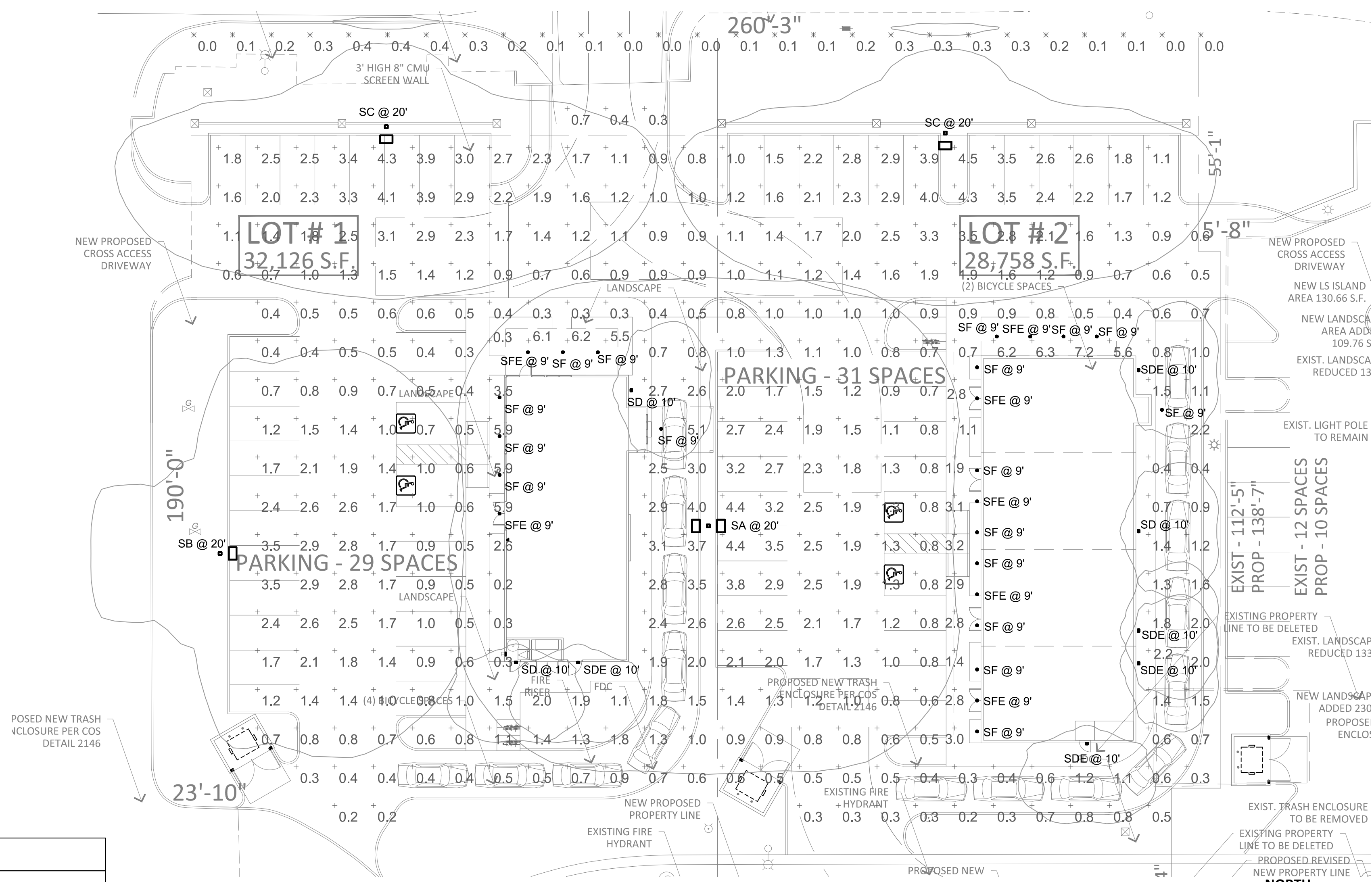


LIGHT POLE AND FIXTURE 'SA', 'SB' AND 'SC'

NOTE:
CONTRACTOR SHALL PROVIDE NEW POLE BASES WHERE INDICATED ON PLANS.
LIGHTING FIXTURE POLE DETAILS AND DESCRIPTIONS ARE FOR ELECTRICAL
REFERENCES ONLY. THE POLE AND BASE SHALL BE DESIGNED BY A
STRUCTURAL ENGINEER REGISTERED IN THE STATE OF ARIZONA AND BE
STAMPED AND SEALED ACCORDINGLY AS A DEFERRED SUBMITTAL.



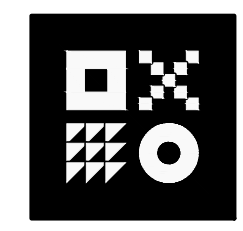
SITE PLAN

SCALE: 1" = 20'-0"

Statistics						
Description	Symbol	Avg	Max	Min	Max/Min	Avg/Min
PROPERTY LINE - FC @ 6' AFG	✕	0.2 fc	0.4 fc	0.0 fc	N/A	N/A
SITE - FC @ GRADE	+	1.6 fc	7.2 fc	0.2 fc	36.0:1	8.0:1

Schedule										
Symbol	Label	Quantity	Manufacturer	Catalog Number	Description	Lamp	Filename	Lumens Per Lamp	Light Loss Factor	Wattage
□	SA	1	Lithonia Lighting	(2) DSX0 LED P6 30K T5W MVOLT SPA (FINISH) / SSS 17.5' W/2.5' BASE	TWIN-HEAD DSX0 LED P6 30K T5W MVOLT	LED - 3000K	DSX0_LED_P6_30K_T5 W_MVOLT.ies	15285	0.91	268
□	SB	1	Lithonia Lighting	DSX0 LED P6 30K TFTM MVOLT SPA (FINISH) / SSS 17.5' W/2.5' BASE	DSX0 LED P6 30K TFTM MVOLT	LED - 3000K	DSX0_LED_P6_30K_TF TM_MVOLT.ies	14819	0.91	134
□	SC	2	Lithonia Lighting	DSX0 LED P6 30K T2M MVOLT SPA (FINISH) / SSS 17.5' W/2.5' BASE	DSX0 LED P6 30K T2M MVOLT	LED - 3000K	DSX0_LED_P6_30K_T2 M_MVOLT.ies	14788	0.91	134
□	SD	3	Lithonia Lighting	WDGE2 LED P1 30K 80CRI TFTM MVOLT (FINISH)	WDGE2 LED WITH P1 - PERFORMANCE PACKAGE, 3000K, 80CRI, TYPE FORWARD THROW MEDIUM OPTIC	LED - 3000K	WDGE2_LED_P1_30K_80CRI_TFTM.ies	1186	0.91	11.1658
□	SDE	5	Lithonia Lighting	WDGE2 LED P1 30K 80CRI TFTM MVOLT E10WH (FINISH)	WDGE2 LED WITH P1 - PERFORMANCE PACKAGE, 3000K, 80CRI, TYPE FORWARD THROW MEDIUM OPTIC W/EM BATTERY PACK	LED - 3000K	WDGE2_LED_P1_30K_80CRI_TFTM.ies	1186	0.91	11.1658
⊗	SF	17	Gotham Architectural Lighting	EVO6SC 30/07 AR WD LSS MVOLT EZ10 (MOUNTING) WL (FINISH)	EVO 6IN WET LOCATION CYLINDER, SURFACE CEILING, 80 CRI, 3000K, 750LM, WIDE DIST, CLEAR, SEMI-SPEC	LED - 3000K	EVO6SC_30_15_AR_W D_LSS.ies	1421	0.45	8.2
⊗	SFE	7	Gotham Architectural Lighting	EVO6SC 30/07 AR WD LSS MVOLT EZ10 (MOUNTING) WL E10WCPR (FINISH)	EVO 6IN WET LOCATION CYLINDER, SURFACE CEILING, 80 CRI, 3000K, 750LM, WIDE DIST, CLEAR, SEMI-SPEC W/EM BATTERY PACK	LED - 3000K	EVO6SC_30_15_AR_W D_LSS.ies	1421	0.45	8.2

32-DR-2021
STIPULATION SET
RETAIN FOR RECORDS
APPROVED
1/6/2022
DATE APPROVED BY



ARDEBILI Engineering
Project Number: 21438 | Project Manager: JFO
8100 E Indian School Rd, Suite 205, Scottsdale, AZ 85251
P: 480.626.7072 | ardebili.com

MCDOWELL - HAYDEN RETAIL
8101 E MCDOWELL ROAD SCOTTSDALE AZ 85257
E OF SEC OF MCDOWELL RD AND HAYDEN RD
DATE: 07-15-2021 (PRELIMINARY)

© 2017 R K A A ARCHITECTS, INC. ALL RIGHTS RESERVED. THIS DRAWING IS AN INSTRUMENT OF SERVICE. IT IS THE PROPERTY OF R K A A ARCHITECTS, INC. AND MAY NOT BE DUPLICATED, USED OR DISCLOSED WITHOUT WRITTEN PERMISSION OF THE ARCHITECT.

DR1.0
PHOTOMETRIC SITE PLAN
RKA# 18107.00

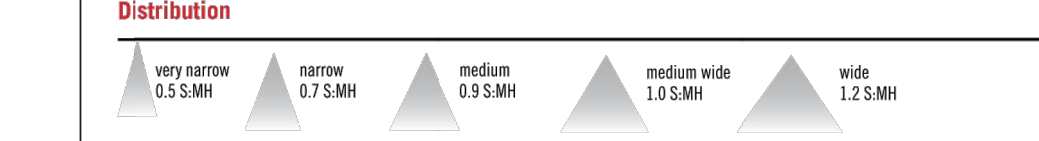


10-01-21 CITY COMMENTS

General Illumination Surface Ceiling Cylinder 6"



- Feature Set**
- Batwing distribution with feathered edges provides even illumination on horizontal and vertical surfaces.
 - Bounding Ray™ optical design
 - 45° Cutoff to source and source image
 - Fully serviceable lensed LED light engine
 - 70% lumen maintenance at 60,000 hours
 - 2.5 SDCM; 85 CRI typical, 90+ CRI optional
 - Fixtures are damp location standard; wet location option (WLT), covered ceiling, IP66 option available, covered ceiling not required.
 - 20 standard colors in textured and gloss finish; custom or RAL colors also available.
 - Recessed gear box available for driver above ceiling, nLight, CP, GTD, or battery pack options covers available
 - Field configurable surface junction box conduit covers available
 - ENERGY STAR® Certified product



Superior Performance

Nominal Lumens	250	500	750	1000	1500	2000	2500	3000	3500	4000	4500	5000	6000	8000
Delivered Lumens	297	519	776	994	1471	2006	2537	3077	3542	4027	4533	5256	6371	8247
Wattage	3.4	6.2	8.2	9.6	14.7	19.7	24.7	29.5	33.8	39.0	47.3	48.7	57.6	74.9
Lumens per Watt	87.4	83.7	94.6	103.5	100.1	101.8	102.7	104.3	104.8	103.3	95.8	107.9	110.6	110.1

Coordinated Apertures | Multiple Layers of Light



Core

Healthcare

Special Applications

EVO6SC © 2014-2020 Acuity Brands Lighting Inc. All Rights Reserved. Rev. 12/14/20. Specifications subject to change without notice. The product images shown are for illustration purposes only and may not be an exact representation of the product.

General Illumination Surface Ceiling Cylinder 6"



- Feature Set**
- Batwing distribution with feathered edges provides even illumination on horizontal and vertical surfaces.
 - Bounding Ray™ optical design
 - 45° Cutoff to source and source image
 - Fully serviceable lensed LED light engine
 - 70% lumen maintenance at 60,000 hours
 - 2.5 SDCM; 85 CRI typical, 90+ CRI optional
 - Fixtures are damp location standard; wet location option (WLT), covered ceiling, IP66 option available, covered ceiling not required.
 - 20 standard colors in textured and gloss finish; custom or RAL colors also available.
 - Recessed gear box available for driver above ceiling, nLight, CP, GTD, or battery pack options covers available
 - Field configurable surface junction box conduit covers available
 - ENERGY STAR® Certified product



Superior Performance

Nominal Lumens	250	500	750	1000	1500	2000	2500	3000	3500	4000	4500	5000	6000	8000
Delivered Lumens	297	519	776	994	1471	2006	2537	3077	3542	4027	4533	5256	6371	8247
Wattage	3.4	6.2	8.2	9.6	14.7	19.7	24.7	29.5	33.8	39.0	47.3	48.7	57.6	74.9
Lumens per Watt	87.4	83.7	94.6	103.5	100.1	101.8	102.7	104.3	104.8	103.3	95.8	107.9	110.6	110.1

Coordinated Apertures | Multiple Layers of Light



Core

Healthcare

Special Applications

EVO6SC © 2014-2020 Acuity Brands Lighting Inc. All Rights Reserved. Rev. 12/14/20. Specifications subject to change without notice. The product images shown are for illustration purposes only and may not be an exact representation of the product.

General Illumination Surface Ceiling Cylinder 6"

Series	Color Temperature	Lumens	Reflector Color	Distribution	Reflector Finish	Voltage
EVO6SC	27/ 2700 K	02 250 lumens	PR Clear	VND Very narrow (0.5 s/m)	SS Semi-specular	MVOLT 120V - 277V
	30/ 3000 K	05 500 lumens	PR Pewter	LD Matte diffuse	LS Specular	120 120V
	35/ 3500 K	07 750 lumens	WTR Wheat	NO Narrow (0.7 s/m)		277 277V
	40/ 4000 K	10 1000 lumens	SR Gold	MD Medium (0.9 s/m)		347 347V
	50/ 5000 K	15 1500 lumens	WR White painted	NWD Medium wide (1.2 s/m)		
		20 2000 lumens	BR Black			
		25 2500 lumens	WRAMP White Anti-microbial			
		30 3000 lumens	BZR Dark Bronze painted			
		35 3500 lumens				
		40 4000 lumens				
		45 4500 lumens				
		50 5000 lumens				
		60 6000 lumens				
		80 8000 lumens				

Driver	Mounting	Control Interface
E210 0-10V driver dims to 10%	JBX Integral driver, Recessed or Surface	(blank) No controls
E21 0-10V driver dims to 1%		NLT nLight® dimming pack
E210 dimLED 0-10V ECOdrive Linear dimming to 10% min	JBXCC Integral driver, Surface J-box with Conduit Covers	NLT nLight® dimming pack for fixtures on emergency circuit. Specify 120V or 277V.
E21 dimLED 0-10V ECOdrive Linear dimming to 1% min		NLTAR2 nLight® AR dimming pack for fixtures on emergency circuit. Specify 120V or 277V.
E2B dimLED 0-10V SOLDrive Logarithmic dimming to <1%	RGH Recessed Gear Housing	NLTAR2 nLight® AR dimming pack for fixtures on emergency circuit. Specify 120V or 277V.
EDXB dimLED POWERdrive DMX with RDM (remote device management). Square Law dimming to <1%. Min: 1000LM; Max: 8000LM.		NLTAR2 nLight® AR dimming pack for fixtures on emergency circuit. Specify 120V or 277V.
ECOS2 Lutron® Hi-Lume® 2-wire forward-phase driver. 120V Only. Minimum dimming level 1% Min. 1000LM; Max: 3500LM.		
ECOS1 Lutron® Hi-Lume® 2-wire forward-phase driver. 120V Only. Minimum dimming level 1% Min. 1000LM; Max: 3500LM.		
ECOD1 Lutron® EcoSystem® digital Hi-Lume 1% soft-on, fade to black. Max: 8000LM except 4500LM.		
ELV Electronic line voltage / Forward phase / Triac dimming, 120V Only.		

Options	Architectural Colors - Powder Paint
SF Single fuse. Specify 120V or 277V.	DWHMF Gloss White with Anti-microbial finish
BOCRI High CRI (90+)	DOB Gloss Dark Bronze
NBO nLight Lumen Compensation	DBL Matte Black
HAP HAO High Ambient Option (40°C)	DWH Gloss White
WLT Wet Location	DMB Matte Medium Bronze
IP66 Lensed, IP66 rated	DNA Gloss Natural Aluminum
E10WPCR Emergency battery pack, 10W Constant Power, CA Title 20 compliant with remote test switch (requires RGH)	DSS Gloss Sandstone
CP Chicago Plenum. Specify 120V or 277V (requires RGH)	DEC Gloss Charcoal Grey
GTD IOTA Generator Transfer Device. Specify 120V or 277V (requires RGH)	DTG Gloss Tennis Green
	DBR Gloss Bright Red
	DSB Gloss Steel Blue
	DOBT Textured Dark Bronze
	DBLB Textured Black
	DWHG Textured White
	DNWH Textured Bronze
	DNAT Textured Natural Aluminum
	DSST Textured Sandstone
	DSPO Textured Dark Grey
	DSPE Textured Green
	DSPH Textured Light Red

ACCESSORIES — order as separate catalog numbers (shipped separately)

GCOLORS KIT
CYLBOXPAPT 4502DCT ... Architectural Colors chip kit, consisting of powder-coat and plated finishes with Architectural Color or PRM for primed ready for field painting

ORDERING NOTES

- Not available with Finishes.
- Factory supplied step down transformer must be remote mounted. Access required to location of remote mounted device.
- Refer to Sect. 240 for compatible dimmers.
- Not available with Control Interfaces.
- Includes terminator resistor.
- Factory installed with RGH option otherwise field installed. Access required to location of remote mounted device.
- EM for use as UL924 Emergency Operation via power sense lead. Will require an emergency hot lead and normal hot feed. EM for use as UL924 Emergency Operation via power interrupt detection.
- Only available up to 2500 lumens. Not available with wet location or ECOS2.
- Not available with JBXC. Max: 3500LM.
- For details on RAL and Custom colors please see Architectural Colors.
- CP not valid with NLTAR2, NLTAR2R or E10WPCR.

EVO6SC © 2014-2020 Acuity Brands Lighting Inc. All Rights Reserved. Rev. 12/14/20. Specifications subject to change without notice. The product images shown are for illustration purposes only and may not be an exact representation of the product.

General Illumination Surface Ceiling Cylinder 6"

Series	Color Temperature	Lumens	Reflector Color	Distribution	Reflector Finish	Voltage
EVO6SC	27/ 2700 K	02 250 lumens	PR Clear	VND Very narrow (0.5 s/m)	SS Semi-specular	MVOLT 120V - 277V
	30/ 3000 K	05 500 lumens	PR Pewter	LD Matte diffuse	LS Specular	120 120V
	35/ 3500 K	07 750 lumens	WTR Wheat	NO Narrow (0.7 s/m)		277 277V
	40/ 4000 K	10 1000 lumens	SR Gold	MD Medium (0.9 s/m)		347 347V
	50/ 5000 K	15 1500 lumens	WR White painted	NWD Medium wide (1.2 s/m)		
		20 2000 lumens	BR Black			
		25 2500 lumens	WRAMP White Anti-microbial			
		30 3000 lumens	BZR Dark Bronze painted			
		35 3500 lumens				
		40 4000 lumens				
		45 4500 lumens				
		50 5000 lumens				
		60 6000 lumens				
		80 8000 lumens				

Driver	Mounting	Control Interface
E210 0-10V driver dims to 10%	JBX Integral driver, Recessed or Surface	(blank) No controls
E21 0-10V driver dims to 1%		NLT nLight® dimming pack
E210 dimLED 0-10V ECOdrive Linear dimming to 10% min	JBXCC Integral driver, Surface J-box with Conduit Covers	NLT nLight® dimming pack for fixtures on emergency circuit. Specify 120V or 277V.
E21 dimLED 0-10V ECOdrive Linear dimming to 1% min		NLTAR2 nLight® AR dimming pack for fixtures on emergency circuit. Specify 120V or 277V.
E2B dimLED 0-10V SOLDrive Logarithmic dimming to <1%	RGH Recessed Gear Housing	NLTAR2 nLight® AR dimming pack for fixtures on emergency circuit. Specify 120V or 277V.
EDXB dimLED POWERdrive DMX with RDM (remote device management). Square Law dimming to <1%. Min: 1000LM; Max: 8000LM.		NLTAR2 nLight® AR dimming pack for fixtures on emergency circuit. Specify 120V or 277V.
ECOS2 Lutron® Hi-Lume® 2-wire forward-phase driver. 120V Only. Minimum dimming level 1% Min. 1000LM; Max: 3500LM.		
ECOS1 Lutron® Hi-Lume® 2-wire forward-phase driver. 120V Only. Minimum dimming level 1% Min. 1000LM; Max: 3500LM.		
ECOD1 Lutron® EcoSystem® digital Hi-Lume 1% soft-on, fade to black. Max: 8000LM except 4500LM.		
ELV Electronic line voltage / Forward phase / Triac dimming, 120V Only.		

Options	Architectural Colors - Powder Paint
SF Single fuse. Specify 120V or 277V.	DWHMF Gloss White with Anti-microbial finish
BOCRI High CRI (90+)	DOB Gloss Dark Bronze
NBO nLight Lumen Compensation	DBL Matte Black
HAP HAO High Ambient Option (40°C)	DWH Gloss White
WLT Wet Location	DMB Matte Medium Bronze
IP66 Lensed, IP66 rated	DNA Gloss Natural Aluminum
E10WPCR Emergency battery pack, 10W Constant Power, CA Title 20 compliant with remote test switch (requires RGH)	DSS Gloss Sandstone
CP Chicago Plenum. Specify 120V or 277V (requires RGH)	DEC Gloss Charcoal Grey
GTD IOTA Generator Transfer Device. Specify 120V or 277V (requires RGH)	DTG Gloss Tennis Green
	DBR Gloss Bright Red
	DSB Gloss Steel Blue
	DOBT Textured Dark Bronze
	DBLB Textured Black
	DWHG Textured White
	DNWH Textured Bronze
	DNAT Textured Natural Aluminum
	DSST Textured Sandstone
	DSPO Textured Dark Grey
	DSPE Textured Green
	DSPH Textured Light Red

ACCESSORIES — order as separate catalog numbers (shipped separately)

GCOLORS KIT
CYLBOXPAPT 4502DCT ... Architectural Colors chip kit, consisting of powder-coat and plated finishes with Architectural Color or PRM for primed ready for field painting

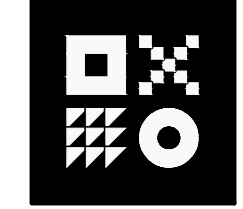
ORDERING NOTES

- Not available with Finishes.
- Factory supplied step down transformer must be remote mounted. Access required to location of remote mounted device.
- Refer to Sect. 240 for compatible dimmers.
- Not available with Control Interfaces.
- Includes terminator resistor.
- Factory installed with RGH option otherwise field installed. Access required to location of remote mounted device.
- EM for use as UL924 Emergency Operation via power sense lead. Will require an emergency hot lead and normal hot feed. EM for use as UL924 Emergency Operation via power interrupt detection.
- Only available up to 2500 lumens. Not available with wet location or ECOS2.
- Not available with JBXC. Max: 3500LM.
- For details on RAL and Custom colors please see Architectural Colors.
- CP not valid with NLTAR2, NLTAR2R or E10WPCR.

EVO6SC © 2014-2020 Acuity Brands Lighting Inc. All Rights Reserved. Rev. 12/14/20. Specifications subject to change without notice. The product images shown are for illustration purposes only and may not be an exact representation of the product.

ENTIRE SHEET

32-DR-2021
STIPULATION SET
RETAIN FOR RECORDS
APPROVED
1/6/2022
DATE APPROVED BY



ARDEBILI Engineering
Project Number: 21430 | Project Manager: JFO
8100 E Indian School Rd, Suite 205, Scottsdale, AZ 85251
P: 480.626.7772 | ardebilieng.com

MCDOWELL - HAYDEN RETAIL
8101 E MCDOWELL ROAD SCOTTSDALE AZ 85257
E OF SEC OF MCDOWELL RD AND HAYDEN RD
DATE: 07-15-2021 (PRELIMINARY)

DR1.2
RKA# 18107.00

EXTERIOR LIGHTING CUTSHEETS

