

**SHEET NOTES**

- 01 COMPOSITE WALL PANEL G
- 02 COMPOSITE WALL PANEL H
- 03 COMPOSITE WALL PANEL F
- 04 COMPOSITE WALL SHADOW BOX TO MATCH WALL PANEL G
- 05 WINDOW FRAMING TO MATCH WALL PANEL H
- 06 BUILDING ENTRANCE
- 07 FOLDED SHADE CANOPY A
- 08 METAL TRELLIS A
- 09 CLEAR GLASS GUARDRAIL
- 10 HIGH PERFORMANCE CLEAR GLAZING
- 11 CMU STACKED BOND TYPE B
- 12 CMU STACKED BOND TYPE C
- 13 BUILDING LIGHTING
- 14 EIFS WALL PANEL G
- 15 EIFS WALL PANEL F
- 16 EIFS WALL PANEL H

**THE KIMSEY**

7120 E INDIAN SCHOOL RD,  
SCOTTSDALE, AZ 85251

- CASE PRE-APP NUMBER -  
63-PA-2020

**Gensler**

2575 E Camelback Road Suite 175  
Phoenix, AZ 85016  
United States  
Tel 602.523.4900  
Fax 602.523.4949

**SYDNOR**

4806 N 78TH Place  
Scottsdale, AZ 85251  
United States  
Tel 480.206.4593

Date	Description
01/06/22	Development Review Board

Seal / Signature

**NOT FOR CONSTRUCTION**

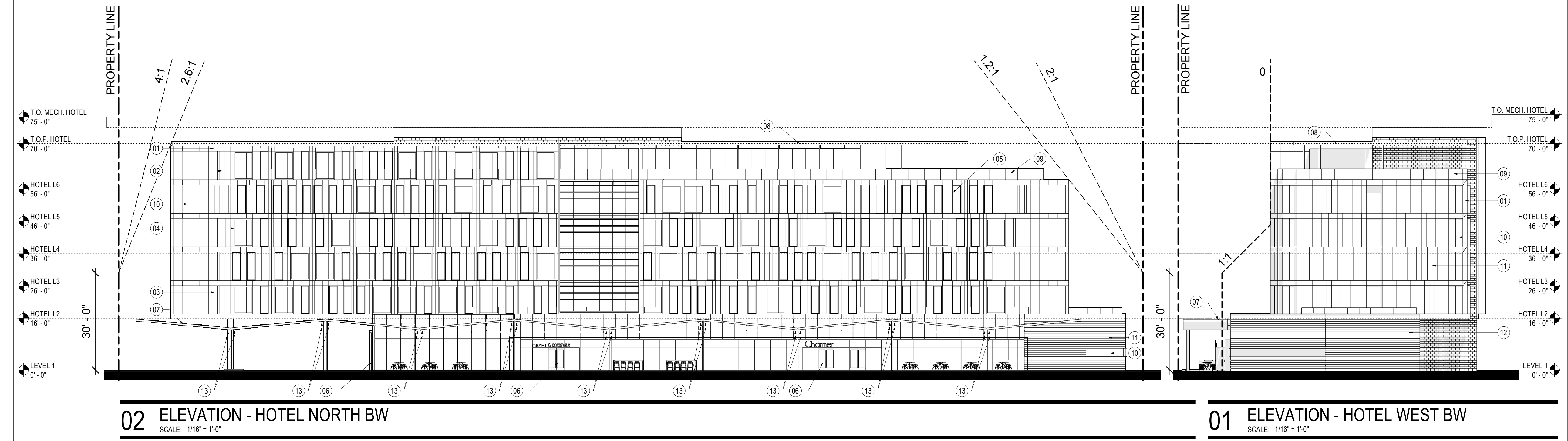
Project Name  
3RD AVENUE + INDIAN SCHOOL  
ROAD - SCOTTSDALE, AZ

Project Number  
057.6850.000

Description  
ELEVATIONS - HOTEL B/W

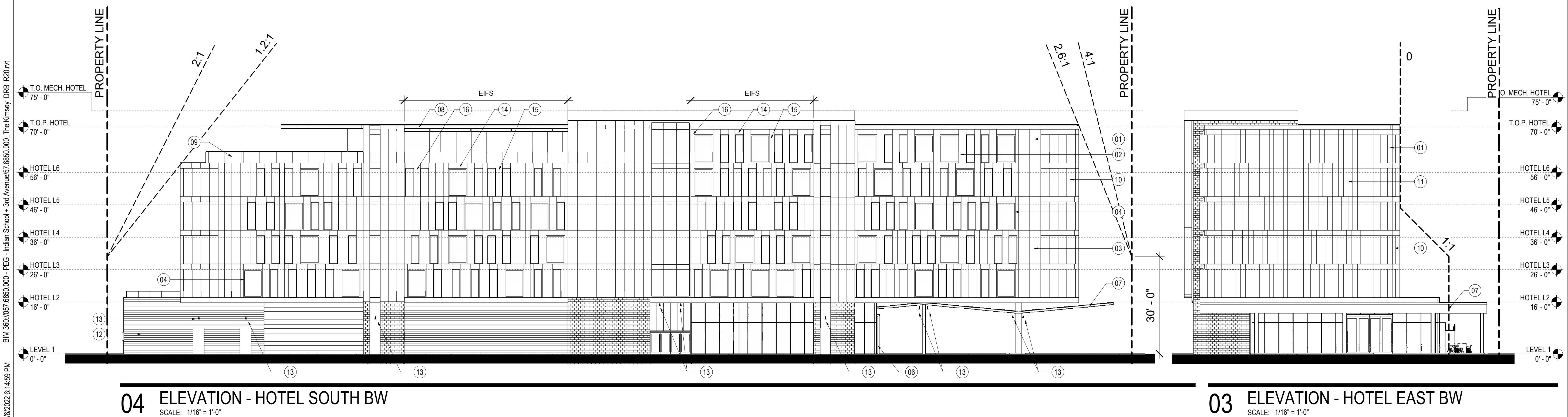
Scale  
1/16" = 1'-0"

**40.1**



**02 ELEVATION - HOTEL NORTH BW**  
SCALE: 1/16" = 1'-0"

**01 ELEVATION - HOTEL WEST BW**  
SCALE: 1/16" = 1'-0"



**04 ELEVATION - HOTEL SOUTH BW**  
SCALE: 1/16" = 1'-0"

**03 ELEVATION - HOTEL EAST BW**  
SCALE: 1/16" = 1'-0"