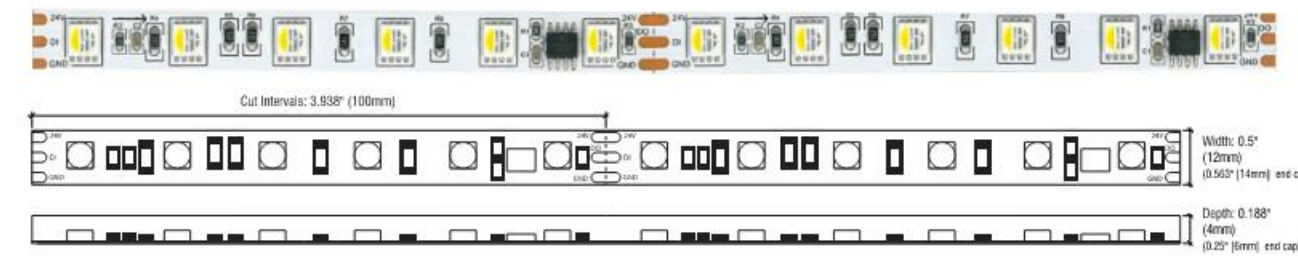




DIGITAL PIXEL (OUTDOOR)
TX-SERIES | COLOR CHANGING PIXEL CONTROL
RUBBER COATED | LINEAR LED LIGHTING

Fixture Type: _____
Project: _____
Location: _____



PRODUCT FEATURES

- Independently Controllable Every 6 Pixels
- 80+ CRI
- Dimmable
- 50,000 Hour Life
- 5-Year Warranty
- UL-Listed for Indoor and Outdoor Use
- 3M™ Industrial Adhesive Backing
- For Use with Electronic Power Supplies

SPECIFICATIONS

Model	TX3RGBW-WR-24V (Outdoor)
Input Voltage	24V DC / Constant Voltage
Watts per Foot	5.79W/ft @ Maximum Run Length
Beam Spread	120°
Max Run Length	Unlimited, power every 16.4ft
Length Increments	3.94" (100mm)
End Cap Dimensions	0.563" (14mm) x 0.25" (6mm)
Tape Dimensions	0.48" (12mm) x 0.16" (4mm)
Lumens	212lm/ft
CRI	4000K = 80+
Diode	5050
Dimming Options	SPI via UCS2903
Temp Range	-40°F (-40°C) to 149°F (65°C)
Rating	IP67

RGB COLOR SPECTRUM



TOTAL WATTAGE USED AT EACH LENGTH

Length	1ft	2ft	3ft	4ft	5ft	6ft	7ft	8ft
5.7	5.7	11.4	17	22.5	28	33.4	38.5	44.1
9ft	49.3	54.5	59.7	64.8	69.8	74.8	79.8	84.7

Conforms to ANSI/UL Standard 2108
Certified to CAN/CSA Standard C22.2 No. 250.0



Questions/Support | 800-789-3810 | quotes@kelvix.com

020720DM

Aura illuminated Wooden Oval Pendant



FIXTURE TYPE: _____
PROJECT NAME: **S19, S19A, S19B**



Solid wood exterior/interior LED oval pendant.

FEATURES:

- Available in sizes ranging from 2.5' to 12'
- >90CRI smooth, dot free illumination
- Dimmable IP67 power supply and IP67 luminaire
- Catenary cable, ceiling, and wall mounting options

SPECIFICATIONS:

HOUSING: Solid Accoya wood linear assembled through glulam construction and precision machined using CNC technology. Adhesive complies with ASTM D-2559 glulam construction specifications for extreme exposed weather conditions, waterproof, and rated for wet or dry use exposure.

ELECTRICAL: Powered by a standalone Q-Train QZ, 120-277VAC primary/24VDC secondary outdoor rated remote dimmable power supply. Power supply features built-in short circuit protection, over

load protection, and over temperature protection. System is forward phase, reverse phase, and 1-10V dimming. Consult factory for other driver options. Catenary mounted fixtures supplied with 1" infed cable. A 40' leader cable supplied with infed only fixtures. Ceiling canopy mounted fixtures supplied with 6' infed cable. Operating temperature of -13°F to 125°F SO, 15°F MO, and 108°F HO.

OPTICAL SYSTEM: Available in 2700K, 3000K, 3500K, 4000K color temperatures with smooth, dot free illumination.

FINISHES AND MATERIALS: Wood is finished with a low VOC waterborne matte exterior finish containing UV and mildew inhibitors. [Care and Maintenance](#)

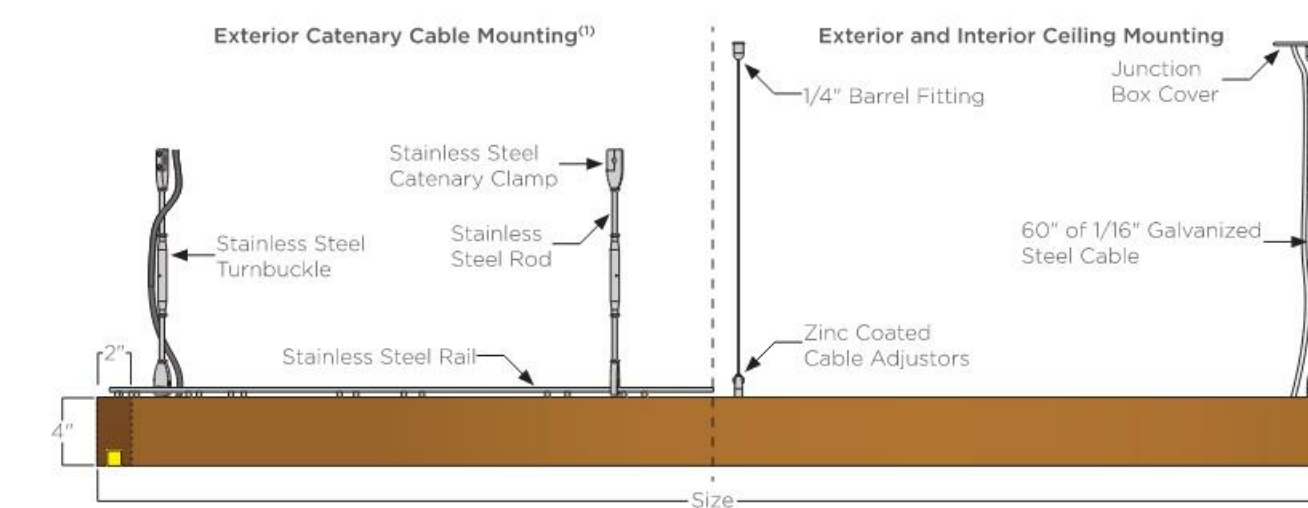
HARDWARE: All fasteners and non-wood components are stainless steel unless otherwise noted.

LISTINGS & RATINGS: Luminaire CSA listed according to CSA C22.2 No. 250.0-18/UL Standard 1598 and UL Standard 2108. Suitable for wet locations. LM-80 test calculated L70 > 40,000 hours.

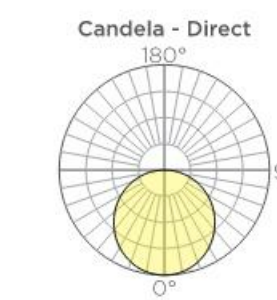
WARRANTY: 25-year wood warranty with a 2-year finish warranty. 3-year warranty on LED and driver.

130 ©2021 STRUCTURA, INC.

Aura Oval - Direct Lighting



Size	Standard Output		Medium Output		High Output		Weight ⁽²⁾	EPA ⁽³⁾
	Lumens ⁽¹⁾	Watts	Lumens ⁽¹⁾	Watts	Lumens ⁽¹⁾	Watts		
2.5'	627	9	1139	18	1593	29	18lbs.	92ft ²
3.5'	936	13	1700	26	2378	43	26lbs.	131ft ²
5'	1299	18	2360	36	3301	60	33lbs.	175ft ²
6'	1662	23	3020	46	4224	77	42lbs.	217ft ²
7'	1980	28	3597	55	5032	91	48lbs.	256ft ²
10'	2671	37	4851	74	6787	123	65lbs.	336ft ²
12'	3361	47	6105	93	8541	155	81lbs.	417ft ²



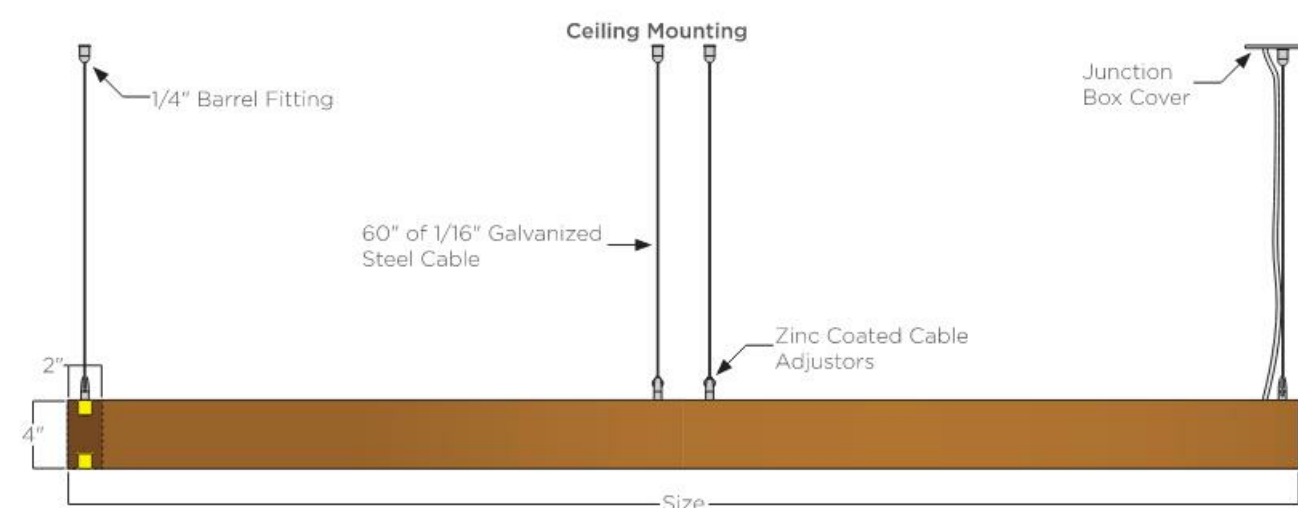
ORDERING GUIDE: EXAMPLE: AURA-OVAL-D-S-L27MO-S4-CA-STD

1	AURA	2	OVAL	3	D	4	S	5	L27	6	MO	7	S4	8	CA	9	STD												
1	Series	4	Size ⁽⁴⁾	5	CCT	7	Wood Finish	2	Aura	2.5	29" x 20"	L27	2700K	5*	See color options on finishes technical sheet	3	Series	3.5	43" x 27"	L30	3000K	8	Mounting	CA	Catenary Cable Ceiling Canopy	9	Special	STD	Standard Modified
2	OVAL	6	74" x 46"	L40	4000K	8	CE	4	Oval	7	87" x 55"	MO	Standard Output	9	MO	Medium Output	9	MO	High Output	9	MO	High Output							
3	Lighting	12	126" x 91"	HO	High Output	9	MO	MO	MO	MO	MO	MO	MO	MO	MO	MO	MO	MO	MO	MO	MO	MO	MO	MO					

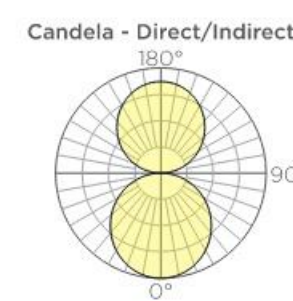
1. Catenary cable designed and provided separately.
2. Lumen output based upon 3000K CCT.
3. Weight and EPA based off of catenary mounting option.
4. Oval size 10 and larger will ship in multiple pieces and will need field assembly.
Product specification sheets subject to change.

©2021 STRUCTURA, INC. 131

Aura Oval - Direct/Indirect Lighting



Size	Standard Output		Medium Output		High Output		Weight	EPA
	Lumens ⁽¹⁾	Watts	Lumens ⁽¹⁾	Watts	Lumens ⁽¹⁾	Watts		
2.5'	1217	17	2211	34	3093	56	16lbs.	81ft ²
3.5'	1835	26	3333	51	4663	85	24lbs.	119ft ²
5'	2562	36	4653	71	6510	118	31lbs.	164ft ²
6'	3288	46	5973	91	8256	151	40lbs.	206ft ²
7'	3924	54	7128	108	9972	180	46lbs.	244ft ²
10'	5268	73	9570	145	13388	242	61lbs.	325ft ²
12'	6649	92	12078	183	16897	305	76lbs.	406ft ²



ORDERING GUIDE: EXAMPLE: AURA-OVAL-D/I-3.5-L30HO-S4-CE-STD

1	AURA	2	OVAL	3	D/I	4	3.5	5	L30	6	HO	7	S4	8	CE	9	STD												
1	Series	4	Size ⁽⁴⁾	5	CCT	7	Wood Finish	2	Aura	2.5	29" x 20"	L27	2700K	5*	See color options on finishes technical sheet	3	Series	3.5	43" x 27"	L30	3000K	8	Mounting	CA	Catenary Canopy	9	Special	STD	Standard Modified
2	OVAL	6	74" x 46"	L40	4000K	8	CE	4	Oval	7	87" x 55"	MO	Standard Output	9	MO	Medium Output	9	MO	High Output	9	MO	High Output							
3	Lighting	12	126" x 91"	HO	High Output	9	MO	MO	MO	MO	MO	MO	MO	MO	MO	MO	MO	MO	MO	MO	MO	MO	MO	MO					

1. Lumen output based upon 3000K CCT.
2. Direct/indirect illumination controlled together. Contact Structura for independent control options.

132 ©2021 STRUCTURA, INC.

S20

Drive-over surface-mounted luminaires to illuminate ground surfaces

Type: _____
BEGA Product: _____
Project: _____
Voltage: _____
Color: _____
Options: _____
Modified: _____

Outer Housing: Constructed of high tensile strength, copper free die-cast aluminum alloy with two (2) light openings. Slotted, stainless steel base plate allows top casting to rotate to any orientation. Die castings are marine grade, copper free (s 0.3% copper content) A380.0 aluminum alloy.

Enclosure: One piece heavy duty die cast aluminum body with clear borosilicate lens. Reflector of pure anodized aluminum. All aluminum used in the construction is marine grade and copper free. All fasteners are stainless steel. Two (2) molded, one piece, high temperature silicone gaskets on top and bottom of the lens.

Electrical: 6.7W LED luminaire, 9.3 total system watts, -40°C start temperature. Integral 120V through 277V electronic LED driver, 0-10V dimming. LED module(s) are available from factory for easy replacement. Standard LED color temperature is 3000K with an 85 CRI. Available in 4000K (85 CRI); add suffix K4 to order.

Note: LEDs supplied with luminaire. Due to the dynamic nature of LED technology, LED luminaire data on this sheet is subject to change at the discretion of BEGA-US. For the most current technical data, please refer to www.bega-us.com.

Mounting: Luminaire mounts directly to ground-mounted weatherlight wiring box, by BEGA. Slotted holes in stainless steel luminaire base plate allow for up to 50° of base plate rotation. BEGA wiring box suitable for 1/2" side or bottom conduit entry.

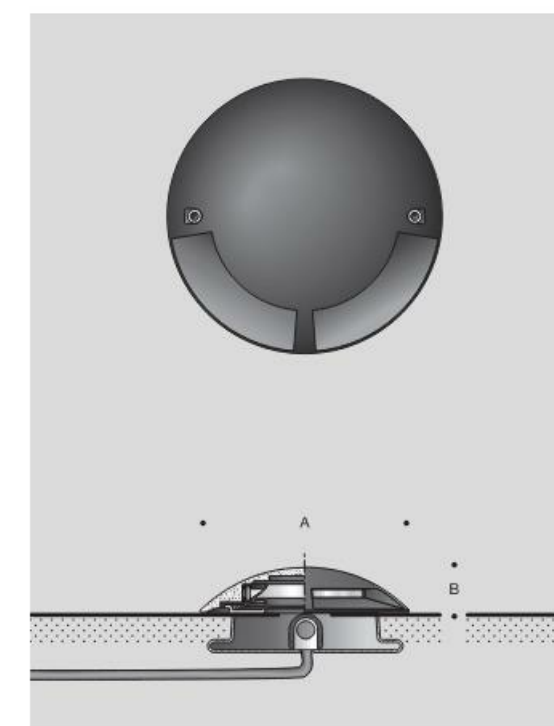
Note: The luminaires must not be installed in traffic lanes where they are subject to horizontal pressure from vehicles braking, accelerating and changing direction. A foundation must be supplied by the contractor designed to bear the static pressure loads from vehicles with pneumatic tires. The luminaires are designed to withstand a static load of 2,200 lbs.

Finish: All BEGA standard finishes are polyester powder coat with minimum 3 mil thickness. Available in standard BEGA Black (BLK). Custom colors not available.

CSA: certified to U.S. and Canadian standards for wet locations. Protection class IP67
Weight: 6.4 lbs.



The ground-mounted luminaires mount directly to BEGA in-ground wiring box.



180° port	Lumens	A	B
77 089	6.7W LED	10 1/2"	2 1/2"

BEGA-US 1000 BEGA Way, Carpinteria, CA 93013 (805)684-0533 FAX (805)566-9474 www.bega-us.com
©copyright BEGA-US 2016 Updated 04/16

THE KIMSEY

7120 E INDIAN SCHOOL RD,
SCOTTSDALE, AZ 85251

- CASE PRE-APP NUMBER -
63-PA-2020

Gensler

2575 E Camelback Road Suite 175
Phoenix, AZ 85016
United States
Tel 602.523.4900
Fax 602.523.4949

SYDNOR

4806 N 78TH Place
Scottsdale, AZ 85251
United States
Tel 480.206.4593

Date	Description
01/06/22	Development Review Board

Seal / Signature

NOT FOR CONSTRUCTION

Project Name

3RD AVENUE + INDIAN SCHOOL
ROAD - SCOTTSDALE, AZ

Project Number

057.6850.000

Description

LIGHTING CUT SHEETS

Scale

52.4

© 2015 Gensler