

SHEET NOTES

- 01 HIGH PERFORMANCE CLEAR GLAZING
- 04 STEEL TRELLIS CANOPY TYPE A
- 05 CLEAR GLASS GUARDRAIL
- 06 COMPOSITE WALL PANEL G
- 07 COMPOSITE WALL PANEL H
- 09 COMPOSITE WALL SHADOW BOX TO MATCH WALL PANEL G
- 10 WINDOW FRAMING TO MATCH WALL PANEL H
- 11 BUILDING ENTRANCE
- 12 FOLDED SHADE CANOPY A
- 13 CMU STACKED BOND - TYPE B
- 14 CMU RUNNING BOND - TYPE B

THE KIMSEY

7120 E INDIAN SCHOOL RD,
SCOTTSDALE, AZ 85251

- CASE PRE-APP NUMBER -
63-PA-2020

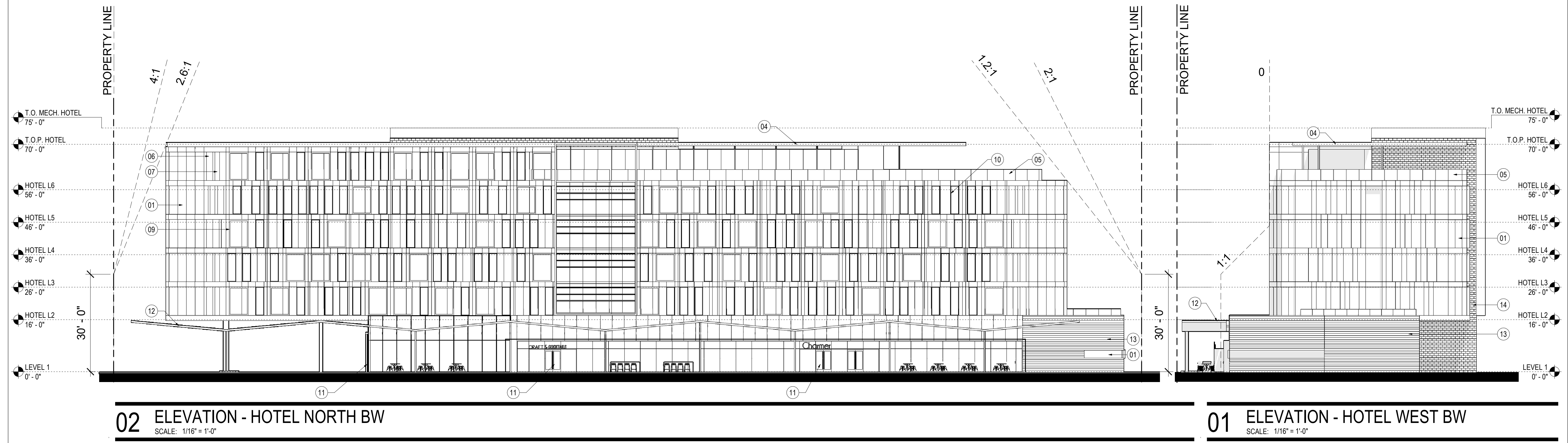
Gensler

2575 E Camelback Road
Suite 175
Phoenix, AZ 85016
United States
Tel 602.523.4900
Fax 602.523.4949

SYDNOR

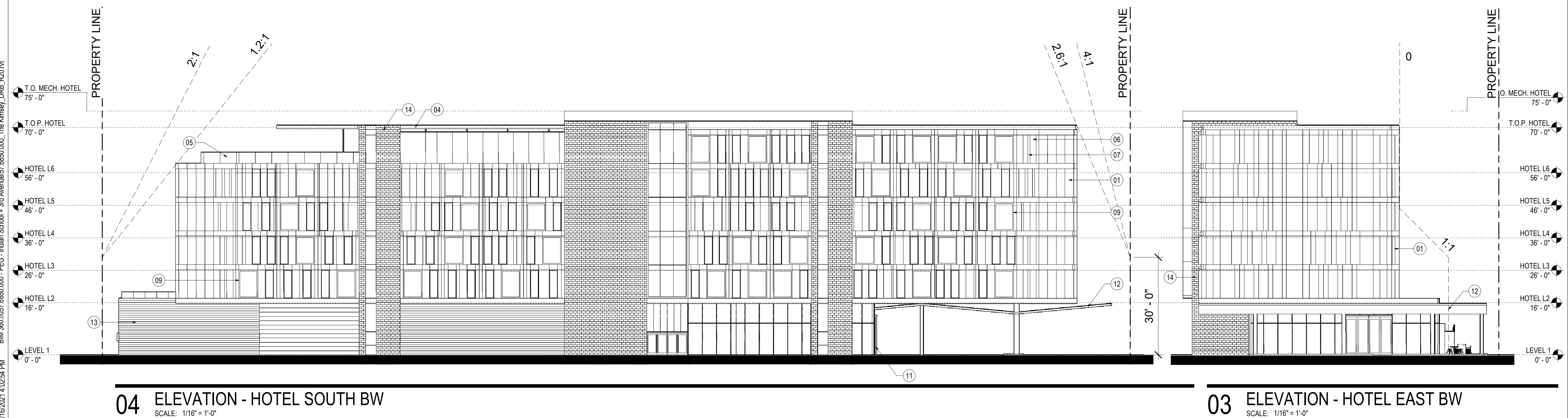
4806 N 78TH Place
Scottsdale, AZ 85251
United States
Tel 480.206.4593

Date	Description
06/18/21	Development Review Board



02 ELEVATION - HOTEL NORTH BW
SCALE: 1/16" = 1'-0"

01 ELEVATION - HOTEL WEST BW
SCALE: 1/16" = 1'-0"



04 ELEVATION - HOTEL SOUTH BW
SCALE: 1/16" = 1'-0"

03 ELEVATION - HOTEL EAST BW
SCALE: 1/16" = 1'-0"

Seal / Signature

NOT FOR CONSTRUCTION

Project Name
3RD AVENUE + INDIAN SCHOOL
ROAD - SCOTTSDALE, AZ

Project Number
057.6850.000

Description
ELEVATIONS - HOTEL B/W

Scale
1/16" = 1'-0"

40.1

6/16/2021 4:02:54 PM BIM 360://057.6850.000 - PEG - Indian School + 3rd Avenue/57.6850.000_The Kimsey_DRB_1/20.rvt