

7120 E INDIAN SCHOOL RD,  
SCOTTSDALE, AZ 85251

2575 E Camelback Road  
Suite 175  
Phoenix, AZ 85016  
United States

4806 N 78TH Place  
Scottsdale, AZ 85251  
United States

COLWELL SHELOR LANDSCAPE ARCHITECTURE  
4450 north 12th street, suite 104  
phoenix, arizona 85014  
p 602.633.2195

△ Date	Description
06/02/21	Development Review Board

| Seal / Signature

Project Name

3RD AVENUE + INDIAN SCHOOL  
ROAD - SCOTTSDALE, AZ

Project Number

057.6850.000

### Description

PEG - Titleblock

AS NOTED

| Scale

## HARDSCAPE PLAN

## L2.10

© 2015 Gensler



SCALE: 1" = 20"

0 5 10 20 40  
SCALE IN FEET 1" = 20'

PARTIAL GROUND FLOOR HARDSCAPE PLAN 01

**MISCELLANEOUS / SITE FURNISHINGS:**

- 5.1 LED STRIP LIGHT IN PAVERS @ COURTYARD.
- 5.2 GAS FIREPIET WITH EMERGENCY SHUT OFF VALVE & TIMER
- 5.3 PING PONG TABLE
- 5.4 COMMUNITY TABLE
- 5.5 CHAIRS AND TABLES
- 5.6 FURNITURE, TBD
- 5.7 CORN HOLE / GAMES
- 5.8 BIKE RACKS
- 5.9 BENCH, LANDSCAPE FORMS

**PLANTING AND LANDSCAPE:**

- 6.1 ARTIFICIAL TURF
- 6.2 RAISED PLANTER WITH INTEGRAL IRRIGATION / WATERPROOFING /  
DECORATIVE ROCK TOP DRESSING
- 6.3 PLANTER POTS WITH INTEGRAL IRRIGATION / WATERPROOFING /  
DECORATIVE ROCK TOP DRESSING
- 6.4 PLANTER AT GRADE W/ 2' DEPTH 1/2" SCREENED DG
- 6.5 BIOSWALE BASIN W/ 3'-4" RUP RAP, FEATHERED EDGES

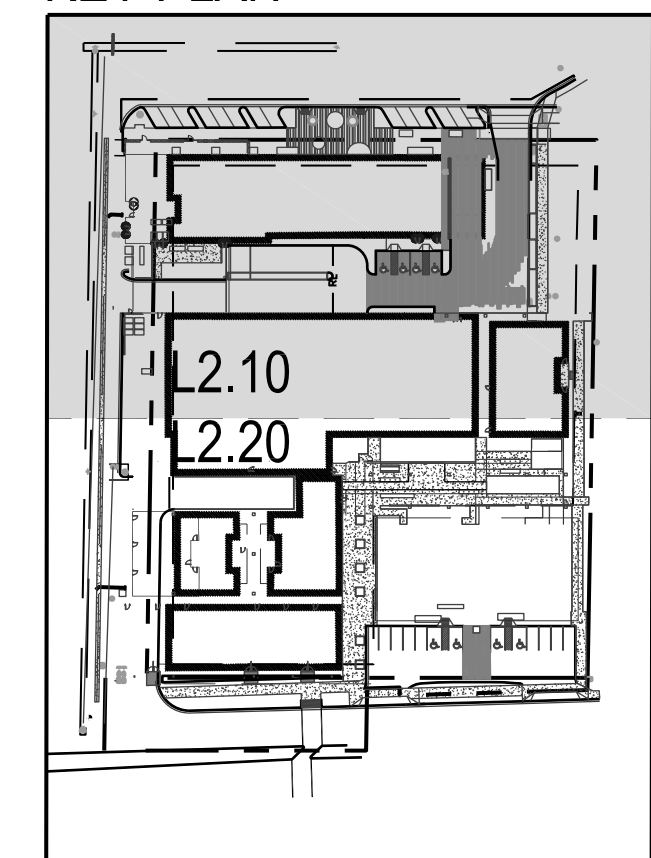
**DETAIL/REFERENCE:**

- DETAIL X/XX  
DETAIL X/XX  
TBD  
TBD  
TBD  
TBD  
TBD  
TBD  
DETAIL X/XX

**DETAIL/REFERENCE:**

- DETAIL X/XX  
DETAIL X/XX  
DETAIL X/XX  
DETAIL X/XX

## KEY PLAN





7120 E INDIAN SCHOOL RD,  
SCOTTSDALE, AZ 85251

2575 E Camelback Road  
Suite 175  
Phoenix, AZ 85016  
United States

Tel 602.523.  
Fax 602.523

4806 N 78TH Place  
Scottsdale, AZ 85251  
United States

COLWELL SHELOR LANDSCAPE ARCHITECTURE  
4450 north 12th street, suite 104  
phoenix, arizona 85014  
p 602.633.2195

△ Date	Description
06/02/21	Development Review Board

[illegible]

--  
--  
--  
REFER TO ARCH  
REFER TO ARCH  
--  
REFER TO ARCH  
REFER TO CIVIL

DETAIL X/XX  
DETAIL X/XX  
DETAIL X/XX  
DETAIL X/XX  
DETAIL X/XX  
DETAIL X/XX  
-  
-  
REFER TO CIVIL

DETAIL X/XX  
DETAIL X/XX  
DETAIL X/XX  
DETAIL X/XX  
DETAIL X/XX

DETAIL X/XX

DETAIL X/XX  
DETAIL Y/XX

DETAIL X/XX  
DETAIL X/XX  
DETAIL X/XX

DETAIL X/XX

DETAIL X/XX  
DETAIL X/XX  
DETAIL X/XX

DETAIL X/XX  
DETAIL X/XX  
-



**NOT FOR INSTRUCTION**

3RD AVENUE + INDIAN SCHOOL  
ROAD - SCOTTSDALE, AZ

057.6850.000

PEG - Titleblock

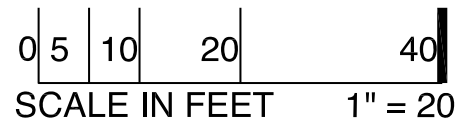
AS NOTED

Scale

## HARDSCAPE PLAN

## L2.20

© 2015 Gensler



PARTIAL GROUND FLOOR HARDSCAPE PLAN 02

- 5.1 LED STRIP LIGHT IN PAVERS @ COURTYARD.
- 5.2 GAS FIREPIT WITH EMERGENCY SHUT OFF VALVE & TIMER
- 5.3 PING PONG TABLE
- 5.4 COMMUNITY TABLE
- 5.5 CHAIRS AND TABLES
- 5.6 FURNITURE, TBD
- 5.7 CORN HOLE / GAMES
- 5.8 BIKE RACKS
- 5.9 BENCH, LANDSCAPE FORMS

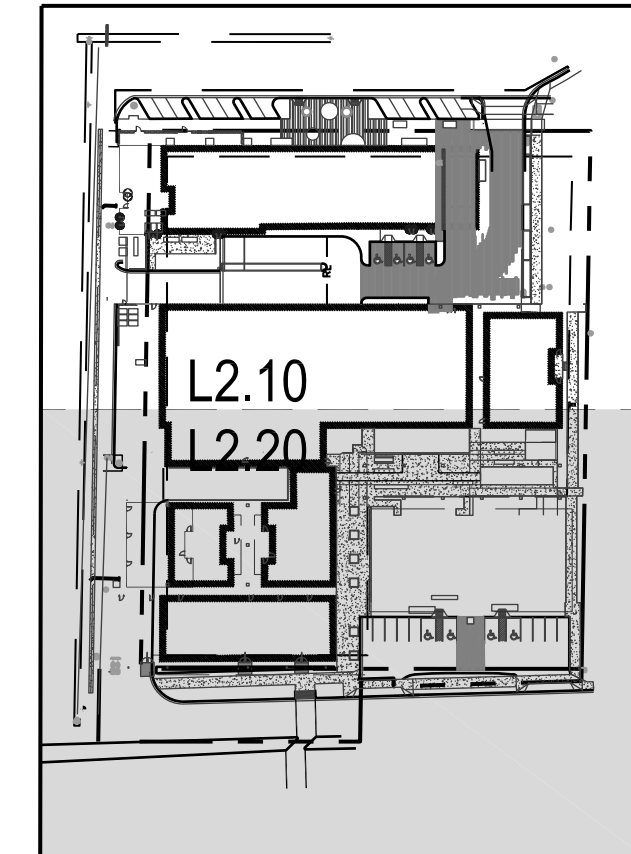
6.1	ARTIFICIAL TURF
6.2	RAISED PLANTER WITH INTEGRAL IRRIGATION / WATERPROOFING / DECORATIVE ROCK TOP DRESSING
6.3	PLANTER POTS WITH INTEGRAL IRRIGATION / WATERPROOFING / DECORATIVE ROCK TOP DRESSING
6.4	PLANTER AT GRADE W/ 2" DEPTH 1/2" SCREENED DG
6.5	BIOSWALE BASIN W/ 3-4" RUP RAP, FEATHERED EDGES

DETAIL X/XX

DETAIL X/XX  
TBD  
TBD  
TBD  
TBD  
TBD  
TBD  
DETAIL X/XX

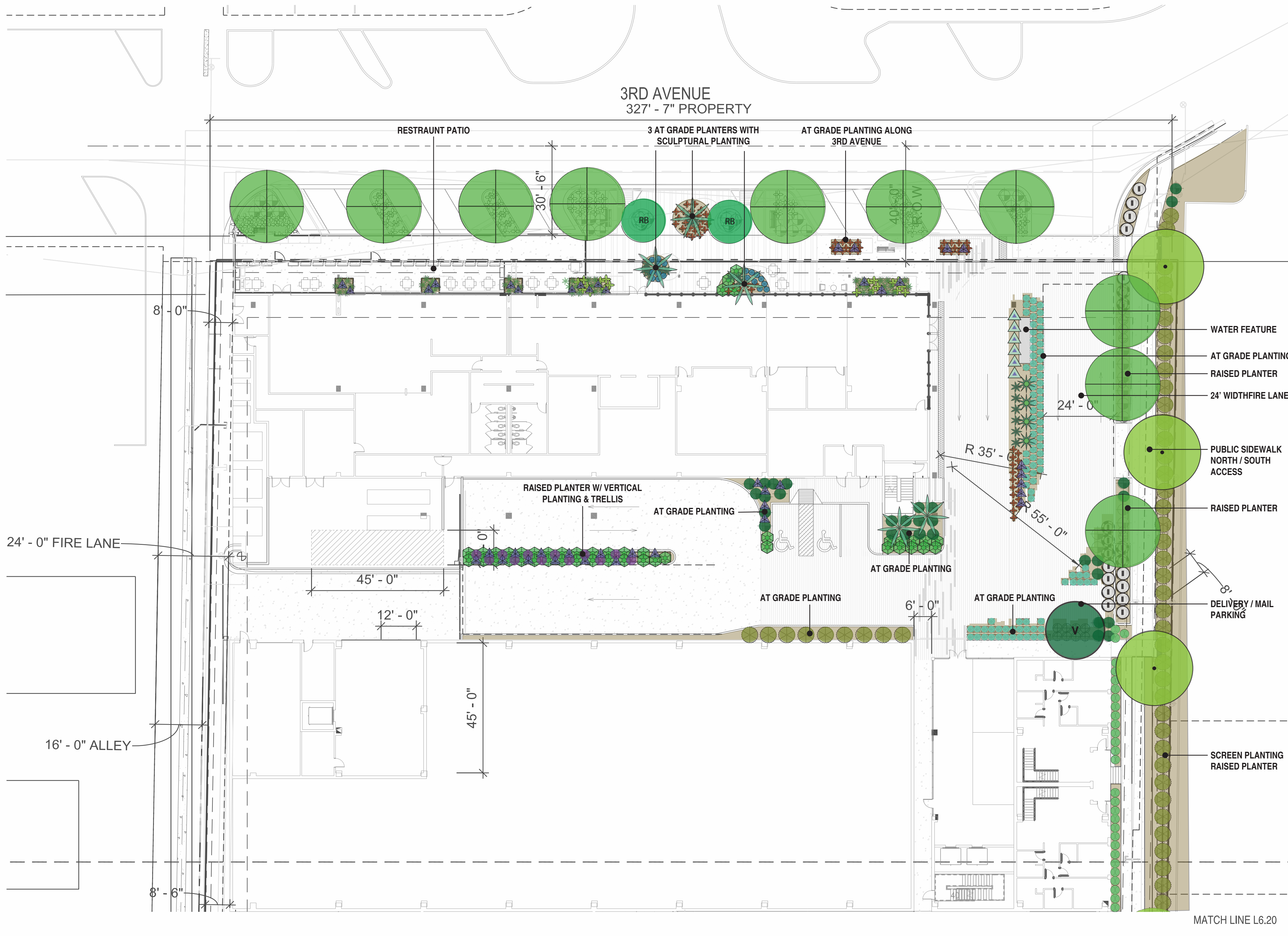
--  
DETAIL X/X  
DETAIL X/X  
DETAIL X/X  
DETAIL X/X

## KEY PLAN

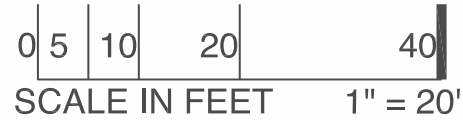




\\gensler.ad\projects\New\userModels\28870\PEG\_R19\_Building\_Central\_File\_Johanna\_Collins.rvt  
6/19/2020 3:38:59 PM



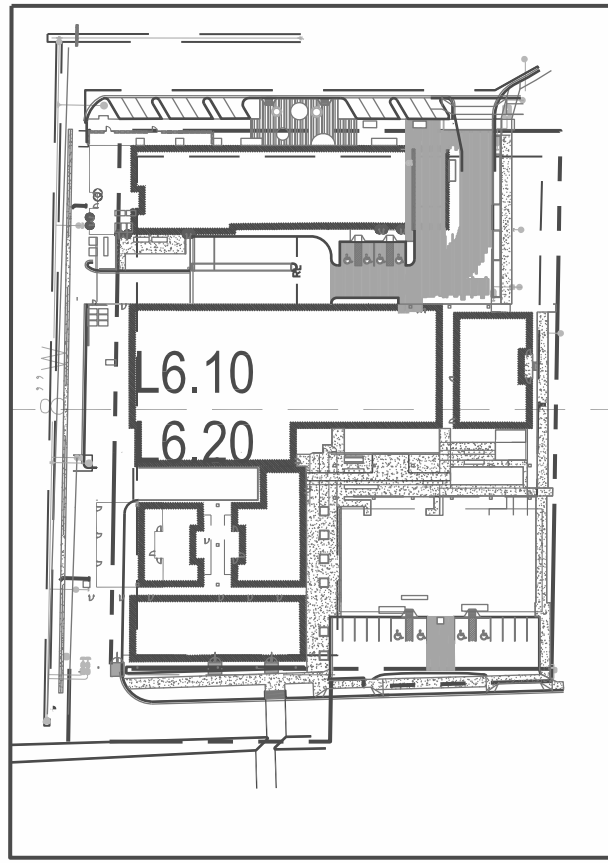
SCALE: 1" = 20"



CONCEPTUAL LANDSCAPE PLAN 01

PLANT LEGEND				NOTES	
SYM.	BOTANICAL NAME COMMON NAME	SIZE	QTY	(H X W X CAL.)	
	EXISTING TREE	--	--	--	
	CERCIS CANADENSIS V MEXICANA MEXICAN REDBUD	24" BOX	2	7-9' X 5-7' MIN. MULTI-TRUNK	
	PHOENIX DACTYLIFERA DATE PALM	---	6	20' H. MIN. ALL H. MATCHING	
	FRAXINUS VELUTINA 'FANWEST' FANWEST ASH	36" BOX	1	9-11' X 5-7' 1.75" MIN. SINGLE	
	SABAL MINOR SABAL PALMETTO	36" BOX	9	6-8' H. 3' TRUNK MIN.	
	VITEX AGNUS-CASTUS CHASTE TREE	24" BOX	1	5-7' X 3-4' MIN. MULTI-TRUNK	
	ULMUS PARVIFOLIA CHINESE ELM	48" BOX	11	13-15' x 8-10' 2.5" MIN. SINGLE	
	SHRUBS				
	CALLIANDRA 'SIERRA STARR' PINK FAIRY DUSTER HYBRID	5 GAL.	8	CAN FULL	
	DODONEA VISCOSA HOPSEED BUSH	5 GAL.	57	CAN FULL	
	LANTANA MONTEVIDENSIS ALBA WHITE TRAILING LANTANA	5 GAL.	20	CAN FULL	
	MUHLENBERGIA RIGENS DEER GRASS	5 GAL.	33	CAN FULL	
	ROSMARINUS OFFICINALIS 'HUNTINGTON CARPET'	5 GAL.	4	CAN FULL	
	ROSMARINUS OFFICINALIS 'PROSTRATUS' CREEPING ROSEMARY	5 GAL.	8	CAN FULL	
	RUELLIA BRITTONIANA PURPLE RUELLIA	5 GAL.	12	CAN FULL	
	RUSSELIA EQUISETIFORMIS CORAL BUSH	5 GAL.	110	CAN FULL	
	ACCENTS				
	AGAVE 'BLUE FLAME' BLUE FLAME AGAVE	5 GAL.	17	CAN FULL	
	AGAVE GEMINIFLORA TWIN-FLOWERED AGAVE	5 GAL.	45	CAN FULL	
	AGAVE PARRYI PARRY'S AGAVE	5 GAL.	93	CAN FULL	
	ALOE BARBADENSIS ALOE VERA	5 GAL.	173	CAN FULL	
	ALOE x 'BLUE ELF' BLUE ELF ALOE	5 GAL.	18	CAN FULL	
	ALOE STRIATA CORAL ALOE	5 GAL.	73	CAN FULL	
	BEAUCAERNEA RECURVATA PONY TAIL PALM	25 GAL.	21	CAN FULL	
	CYCAS REVOLUTA SAGO PALM	5 GAL.	8	CAN FULL	
	DASYLIROIUM TEXANUM TEXAS SOTOL	5 GAL.	4	CAN FULL	
	EUPHORBIA ANTISYPHILITICA CANDELLILLA	5 GAL.	97	CAN FULL	
	ALOE HERCULES HERCULES ALOE	15 GAL.	5	6' H. MIN.	
	LOPHOCEREUS SCHOTII MONSTROSUS-- TOTEM POLE CACTUS	6	5' H. MIN. 3 ARMS MIN.		
	PACHYCEREUS MARGINATUS MEXICAN FENCEPOST	--	83	6' H. MIN.	
	PEDILANTUS MICROCARPA SLIPPER PLANT	5 GAL.	161	CAN FULL	
	PORTULACARIA AFRA ELEPHANT BUSH	5 GAL.	109	CAN FULL	
	YUCCA PALLIDA PALE LEAF YUCCA	5 GAL.	35	CAN FULL	
	GROUNDCOVERS / VINES				
	SETCRESEA PALLIDA PURPLE HEART	5 GAL.	72	CAN FULL	
	WEDELIA TRILOBATA YELLOW DOT	5 GAL.	58	CAN FULL	
INERT MATERIALS					
		1/2" SCREENED DECOMPOSED GRANITE COLOR TBD. VERIFY COLOR AND SIZE. TOP DRESSING @ 2" DEPTH. STOCK PILE REMAINING D.G. FOR REUSE.			

KEY PLAN



# THE TRIANGLE

7120 E INDIAN SCHOOL RD,  
SCOTTSDALE, AZ 85251

## Gensler

2575 E Camelback Road  
Suite 175  
Phoenix, AZ 85016  
United States  
Tel 602.523.4900  
Fax 602.523.4949

## SYDNOR

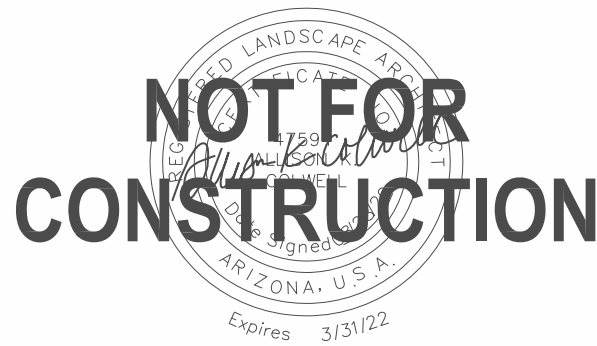
4806 N 78TH Place  
Scottsdale, AZ 85251  
United States  
Tel 480.206.4593

COLWELL SHELOR LANDSCAPE ARCHITECTURE  
4450 north 12th street, suite 104  
phoenix, arizona 85014  
p 602.833.2195

Date	Description
06/02/21	Development Review Board



Seal / Signature



Project Name

3RD AVENUE + INDIAN SCHOOL  
ROAD - SCOTTSDALE, AZ

Project Number

057.6850.000

Description

PEG - Titleblock

AS NOTED

Scale

LANDSCAPE  
PLAN

L6.10



