

## Echo Reflections 9.0 LED

EEW12086 13 in

JOB NAME:  
TYPE:  
NOTES:

**SPI**LIGHTING  
PROJECT DETAILS

### DESCRIPTION

Whether you want to deliver low-glare indirect illumination, accentuate the verticality of the space, or directly light the exterior of a building, Echo Reflections 9.0 is the solution. This powerful luminaire offers field adjustability and, unlike similar products, adjustable light engines that leave the fixture static. This ensures its appearance is always uniform, even when distributions are different for performance or obstructions. The sleek wedge design seamlessly blends into architecture. Available in 6,000, 12,000, and 24,000 lumen packages. For a complimentary lighting layout, contact our applications team at [SPIteam@spilighting.com](mailto:SPIteam@spilighting.com).



### FEATURES & BENEFITS

- Increase visual comfort, eliminate source brightness, and improve light uniformity with indirect lighting
- Field adjustable distribution ratchets to five positions: 35°, 17.5°, 0°, -17.5°, -35° while maintaining a static housing (ships from factory at 35° tilt)
- Wet listed for interior or exterior applications
- Natatorium-rated: rustproof aluminum housing, minimum 2 mils powder coat paint finish (except BAL finish), corrosion-resistant fasteners, IP68 light engine, fully potted power supply
- Watertight power supply box
- Optional direct orientation available
- Solves a wide variety of lighting challenges in one package
- Standard top lens corrects color-over-angle discoloration, delivering a clean white beam suitable for highly-finished ceilings and walls
- Indirect orientation has no visible fasteners within view
- Handcrafted in USA

### SPECIFICATIONS

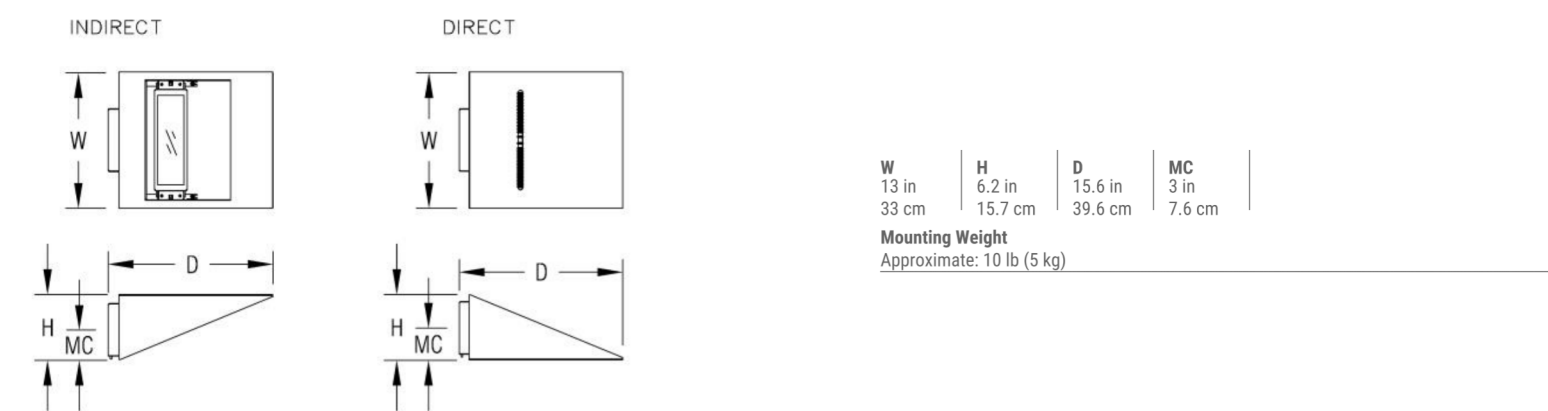
- **LIGHT SOURCE:** IP68 rated White LED light engine
- **CRI:** 80+
- **LUMEN MAINTENANCE:** L70 = >50,000 Hrs.
- **EFFICACY:** Up to 90 lm/W delivered
- **CCT:** 3500K or 4000K

**SPI**LIGHTING

P:262.242.1420 | [SPIteam@spilighting.com](mailto:SPIteam@spilighting.com) | Last Revised: 6/7/2021 | Design Rights Reserved | EEW12086 | 1 of 5

- **VOLTAGE:** 120-277V standard
- **DRIVER:** Fully potted integral Class 1 power supply standard
- **MAX AMBIENT OPERATING TEMP:** Indirect = 50°C (122°F); Direct = 47°C (117°F)
- **DIMMING:** 0-10V controls standard to 10% on LED light engines
- **INTEGRATED SURGE PROTECTION:** LED components are protected against minor surge events
- **CONSTRUCTION:** Aluminum construction; precision injection molded optics
- **FINISH:** Choose from more than 30 thermoset polyester powder coat paint colors or brushed aluminum finish. RAL®, Pantone®, or custom finishes available upon request.
- **MOUNTING:** Mounts to a standard 4" octagonal junction box
- **MODIFICATIONS:** Consult factory for all modification requests
- **APPROVALS:** ETL listed to UL standards (US & Canada) for use in wet locations; suitable for interior or exterior use

### DIMENSIONS



### CONFIGURATOR

To configure your spec sheet online, go to [www.spilighting.com/EEW12086](http://www.spilighting.com/EEW12086). Not all options are available in all configurations; consult factory for details.

#### Required Field \*

Catalog	Light Source*	Primary Finish*	Voltage*	Lamp Options*	Accessories	Orientation*	Options
EEW12086	A	B	C	D	E	F	

#### A - LIGHT SOURCE \*

To ensure color consistency, SPI uses precise bin selection and strict quality processes to maintain a 3-step (MacAdam) SDCM on all white LED lampings. Published LED luminaire wattages are calculated using a typical power supply efficiency of 88%; exact wattages may vary based on application.

**SPI**LIGHTING

P:262.242.1420 | [SPIteam@spilighting.com](mailto:SPIteam@spilighting.com) | Last Revised: 6/7/2021 | Design Rights Reserved | EEW12086 | 2 of 5

LED wall luminaire - light output on one side

#### Application

This LED wall washer luminaire has light output in one direction. This luminaire is ideally suited for the even illumination of vertical mounting surfaces. Arranged individually or in groups, they are a great design element for a host of lighting applications. For downlight applications only.

#### Materials

Luminaire housing constructed of die-cast marine grade, copper free (≤0.3% copper content) A360.0 aluminum alloy  
Clear safety glass  
Reflector made of pure anodized aluminum  
Silicone applied robotically to casting, plasma treated for increased adhesion  
High temperature silicone gasket  
Mechanically captive stainless steel fasteners

**NRTL** listed to North American Standards, suitable for wet locations  
Protection class IP64  
Weight: 2.9 lbs

#### Electrical

Operating voltage 120-277V AC  
Minimum start temperature -20°C  
LED module wattage 8.4W  
System wattage 10W  
Controllability 0-10V dimmable  
Ra > 80  
Color rendering index 421 lumens (3000K)  
Lifetime at Ta = 15°C >500,000 h (L70)  
Lifetime at Ta = 45°C 181,000 h (L70)

#### LED color temperature

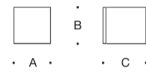
☐ 4000K - Product number + **K4**  
☐ 3500K - Product number + **K35**  
☐ 3000K - Product number + **K3**  
☐ 2700K - Product number + **K27**

**BEGA** can supply you with suitable LED replacement modules for up to 20 years after the purchase of LED luminaires - see website for details

#### Finish

All BEGA standard finishes are matte, textured polyester powder coat with minimum 3 mil thickness.

Available colors ☐ Black (BLK) ☐ White (WHT) ☐ RAL:  
☐ Bronze (BRZ) ☐ Silver (SLV) ☐ CUS:



LED wall luminaire - light output on one side

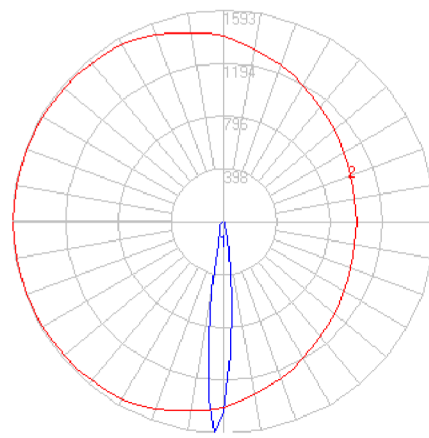
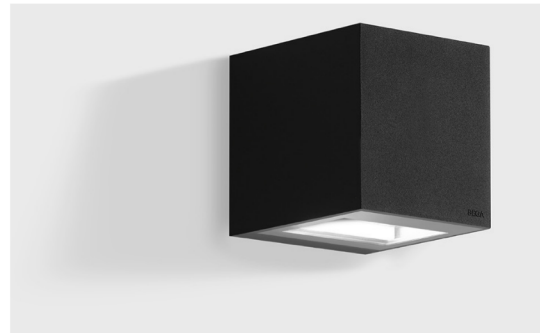
LED	A	B	C
24370	8.2W	4%	5% 5%

**BEGA** 1000 Bega Way, Carpinteria, CA 93013 (805) 684-0533 [info@bega-us.com](mailto:info@bega-us.com)  
Due to the dynamic nature of lighting products and the associated technologies, luminaire data on this sheet is subject to change at the discretion of BEGA North America. For the most current technical data, please refer to [bega-us.com](http://bega-us.com)  
© copyright BEGA 2018 Updated 09/05/18

# BEGA

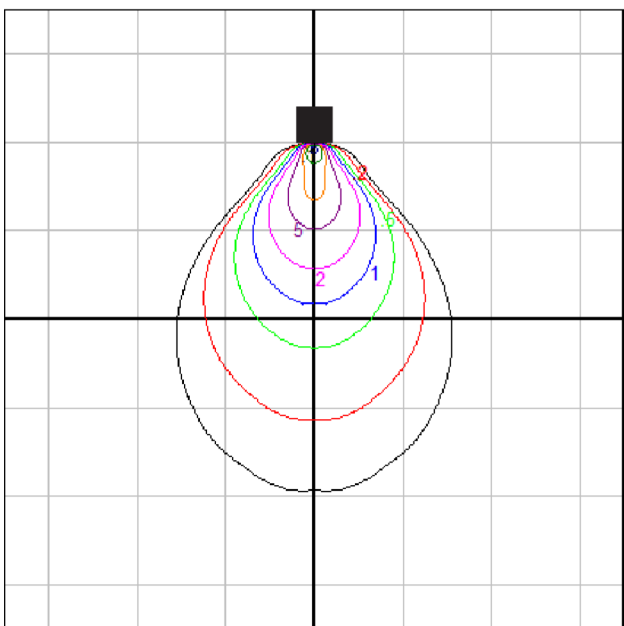
Photometric Filename: 24370.IES

TEST: LM24370  
TEST LAB: BEGA  
DATE: 2/19/2016  
LUMINAIRE: 24 370  
LAMP: 8.4W LED



#### Characteristics

IES Classification	Type I
Longitudinal Classification	Very Short
Lumens Per Lamp	N.A. (absolute)
Total Lamp Lumens	23.9 N.A. (absolute)
Luminaire Lumens	421
Downward Total Efficiency	N.A.
Total Luminaire Efficiency	N.A.
Luminaire Efficacy Rating (LER)	42
Total Luminaire Watts	10
Ballast Factor	1.00
Upward Waste Light Ratio	0.00
Max. Cd	1592.5 (180H; 2.5V)
Max. Cd. (<90 Vert.)	1592.5 (180H; 2.5V)
Max. Cd. (At 90 Deg. Vert.)	0 (0.0%Lum)
Max. Cd. (80 to <90 Deg. Vert.)	.7 (0.2%Lum)
Cutoff Classification (deprecated)	N.A. (absolute)



Grid Spacing = 5 ft.

ISOFOOTCANDLE GRID ON WALL

In the interest of product improvement, BEGA reserves the right to make technical changes without notice.

**BEGA** 1000 Bega Way, Carpinteria, CA 93013 (805) 684-0533 Fax (805) 566-9474 [www.bega-us.com](http://www.bega-us.com) © Copyright BEGA-US 2017

BEGA

Rev: 2020/05/22

OW2480 – PASSAGE™  
Mullion Mount with Remote Power Supply

VISA LIGHTING

Type: Project: [VisaLighting.com/products/Passage](http://VisaLighting.com/products/Passage)

Order Code: OW2480 MODEL SOURCE VOLTAGE OPTIC OPTION FINISH OPTION

Passage is a sleek outdoor fixture for mounting horizontally over doorways, on facades, along paths of egress and window mullions.

**DIMENSIONS**  
Depth is measured from wall to front of fixture  
L = length H = Height D = Depth

L 37-1/4" (946 mm)  
H 2-1/2" (64 mm)  
D 2-1/2" (64 mm)

**MULLION MOUNTING DETAIL**

Set Screws Mounting Bracket Thread Forming Screws (No cover)

**A SOURCE (Select one) and VOLTAGE**  
MVOLT fixture accepts 120 through 277 input voltage  
Dimmable 0-10V to 1%  
E2CR, within 3-step MacAdam

Source	CCT	FT Delivered Lumens	LUM Delivered Lumens	Power (Watts)	Voltage
L30K-L	3000K				
L35K-L	3500K	900	650	14	
L40K-L	4000K				
L30K-H	3000K				
L35K-H	3500K	2700	1900	40	
L40K-H	4000K				

**B OPTIC OPTION (Select one)**  
LUM Luminous Lens FT Forward Throw Optic

**C FINISH OPTIONS (Select one trim finish)** See page 3 for color chart  
Powder Coat Painted Finishes (Standard)

AG7038	Agate Grey	GUM	Glimmer	P81035	Pearl Beige
BMAT	Bronze Matte	GSIL	Graphite Silver	RUST	Rust
BRNZ	Bronze	GW9002	Gray White	SUNG	Sungold
BSIL	Blade Silver	HTHR	Heather	TW9016	Traffic White
CVBL	Cove Blue	JB9005	Jet Black		
CW9001	Cream	OB8Z	Old Bronze		

Wood Sublimated Metal Finishes (Premium)

MCA	Mediterranean Cherry Metal Based Wood Alternative
NOA	Natural Oak Metal Based Wood Alternative

**D OPTION**  
Options availability may be interdependent with Voltage, Source or Other Options  
DS Dual circuit switching (includes 2 dimmer)  
Lumen output and wattage is split in half for each circuit

IP65 Rated LED ADA Compliant ETL Listed 5 Year Warranty

800-788-VISA VisaLighting.com Page 1

Rev: 2020/05/22

ECN170072

OW2480 – PASSAGE  
Mullion Mount with Remote Power Supply

VISA LIGHTING

Photometrics

LUM (Luminous Lens)

FT (Forward Throw Optic)

**Technical Information**

- Modular design for replacement of the LED source and power supply
- High or low lumen output options
- Light Engines by Visa Lighting
- Luminous or Forward Throw output
- Remote power supply included (suitable for indoor, Type IC)
- Optional dual circuit switching
- IP65 rated
- Bracket mounting system simplifies installation and maintenance
- Window mullion mount; minimum mullion width 2.5"
- Tamper resistant fasteners
- Polycarbonate diffuser
- No VOC powder coat paint finish; metal based sublimated wood look finish
- ETL Listed for wet location mounting 4" above grade

**Relative Scale Drawing**

Door Height = 7'  
Ceiling Height = 9'  
Silhouette Height = 6'

**Path of Egress – Luminous Lens**

OW2480 -H Downlight, Mounted at 10' AFF, .70 light loss factor used

**Path of Egress – Forward Throw**

OW2480 -H Downlight, Mounted at 10' AFF, .70 light loss factor used

**Wood Sublimated Metal Finish**

**Remote Power Supply Enclosure**

Cover Main Compartment Line Voltage Compartment

L 12" (305 mm)  
W 6-3/8" (162 mm)  
H 2" (51 mm)

800-788-VISA VisaLighting.com Page 2

## THE KIMSEY

7120 E INDIAN SCHOOL RD,  
SCOTTSDALE, AZ 85251

- CASE PRE-APP NUMBER -  
63-PA-2020

## Gensler

2575 E Camelback Road

Suite 175

Phoenix, AZ 85016

United States

Tel 602.523.4900

Fax 602.523.4949

## SYDNOR

4806 N 78TH Place

Scottsdale, AZ 85251

United States

Tel 480.206.4593

Date	Description
06/18/21	Development Review Board

Seal / Signature

## NOT FOR CONSTRUCTION

Project Name

3RD AVENUE + INDIAN SCHOOL  
ROAD - SCOTTSDALE, AZ

Project Number

057.6850.000

Description

LIGHTING CUT SHEETS

Scale

12" = 1'-0"

## 52

© 2015 Gensler