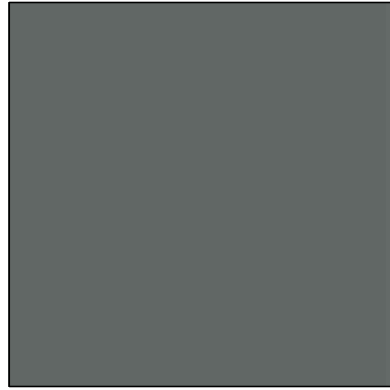


1 PAINTED STUCCO
MFG: SHERWIN WILLIAMS
COLOR: ARGOS
SPEC: SW7065
TEXTURE: SMOOTH



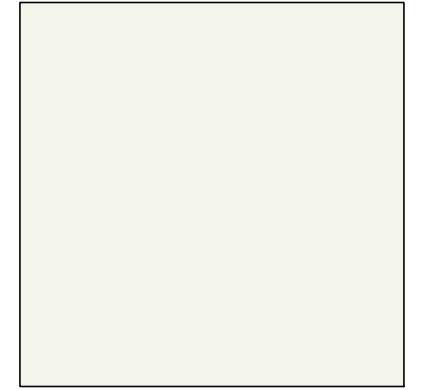
2 PAINTED STUCCO
MFG: SHERWIN WILLIAMS
COLOR: WEB GREY
SPEC: SW 7075
TEXTURE: SMOOTH



3 WOOD SIDING
MFG: NICHIIA
COLOR: CLEAR STAINED CEDAR



4 STONE VENEER
MFG: CULTURED STONE
SPEC: PRO-FIT ALPINE LEDGESTONE
COLOR: DARK RIDGE



5 METAL PANELING
MFG: ATAS
SPEC: DESIGN WALL DWF
COLOR: BONE WHITE



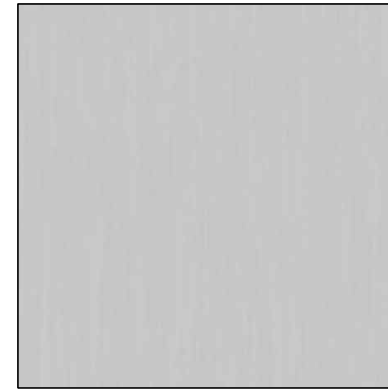
6 WAINSCOT SILL
MFG: CULTURED STONE
SPEC: WATERTABLE/SILL
COLOR: NIGHTFALL



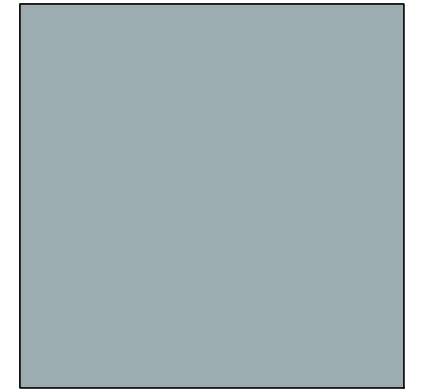
7 METAL ROOF FLASHING
MFG: PAC-TITE
SPEC: "PAC-CLAD"
COLOR: BLACK ALUMINUM



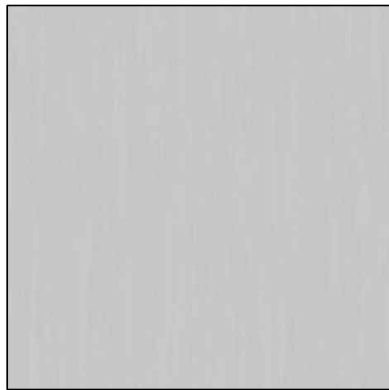
8 STONE VENEER
MFG: CULTURED STONE
SPEC: CAST-FIT
COLOR: CARBON



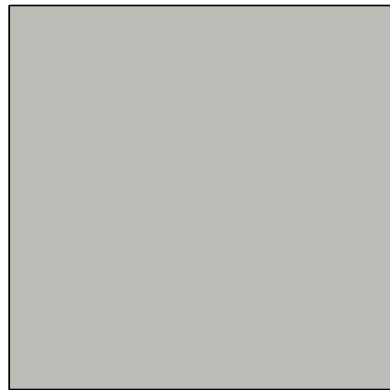
9 STOREFRONT MULLION
MFG: KAWNEER
COLOR: CLEAR ANNODIZED



10 GLAZING
MFG: PPG
SPEC: SOLAR BAN R100(2) GLASS
BELOW + CLEAR GLASS
INSULATING GLASS UNIT



11 AWNING
MFG: "QUEEN CITY AWNING"
COLOR: CLEAR ANNODIZED



12 8x8x16 PAINTED MASONRY
MFG: SUPERLITE
COLOR: ARGOS #SW 7065



13 8x8x16 PAINTED MASONRY
MFG: SUPERLITE
COLOR: WEB GRAY # SW7075

114TH AND SHAE RETAIL
SWC OF 114TH STREET AND SHEA BLVD
SCOTTSDALE ARIZONA
DATE: 10-15-2020 (PRELIMINARY)

© 2019 RKAA
ARCHITECTS, INC. ALL
RIGHTS RESERVED.
THIS DRAWING IS AN
INSTRUMENT OF
SERVICE. IT IS THE
PROPERTY OF RKAA
ARCHITECTS, INC. AND
MAY NOT BE
DUPLICATED, USED OR
DISCLOSED WITHOUT
WRITTEN PERMISSION
OF THE ARCHITECT.

MB-1



RKAA# 20047.50

37-DR-2020

11/20/20