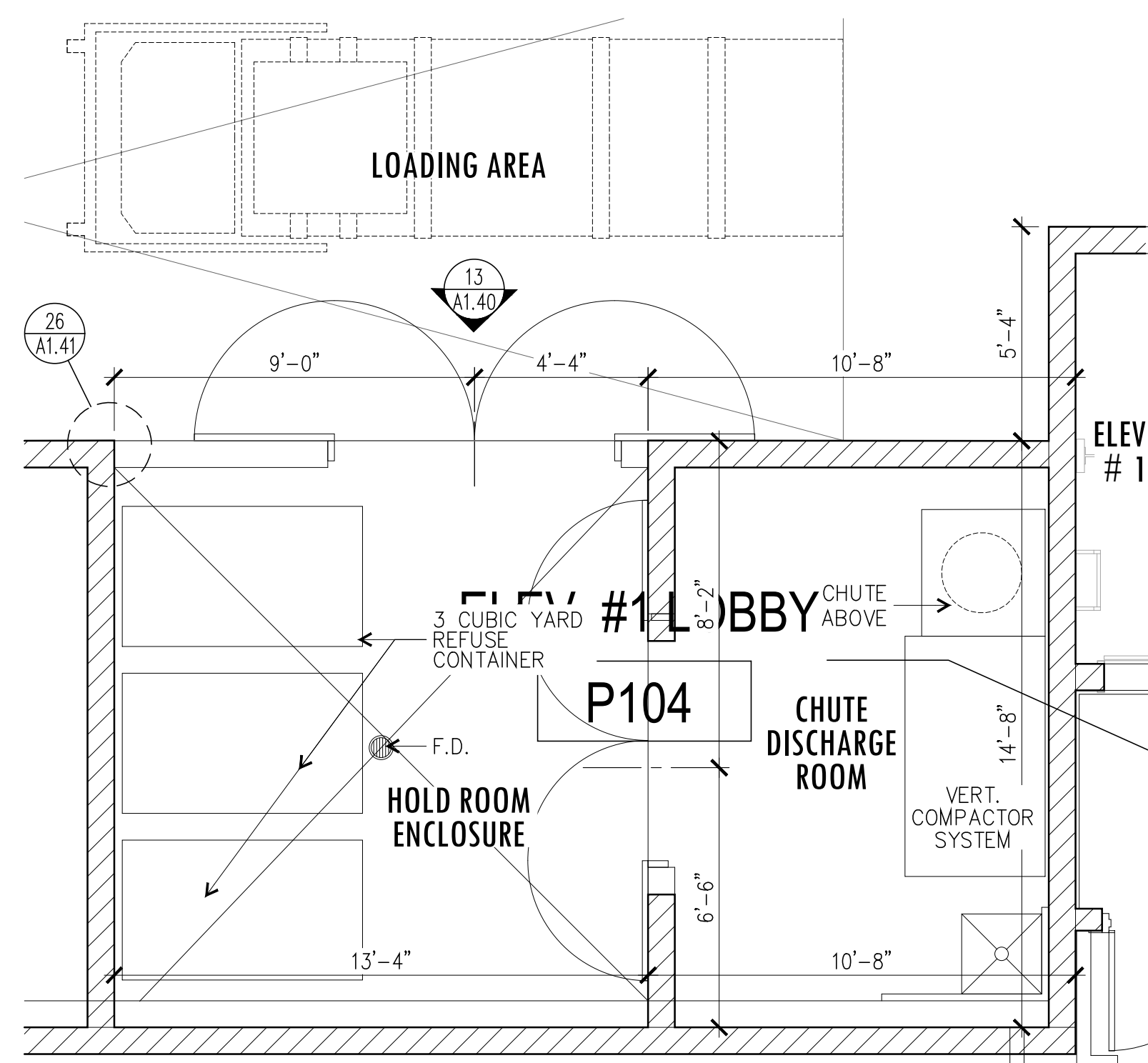
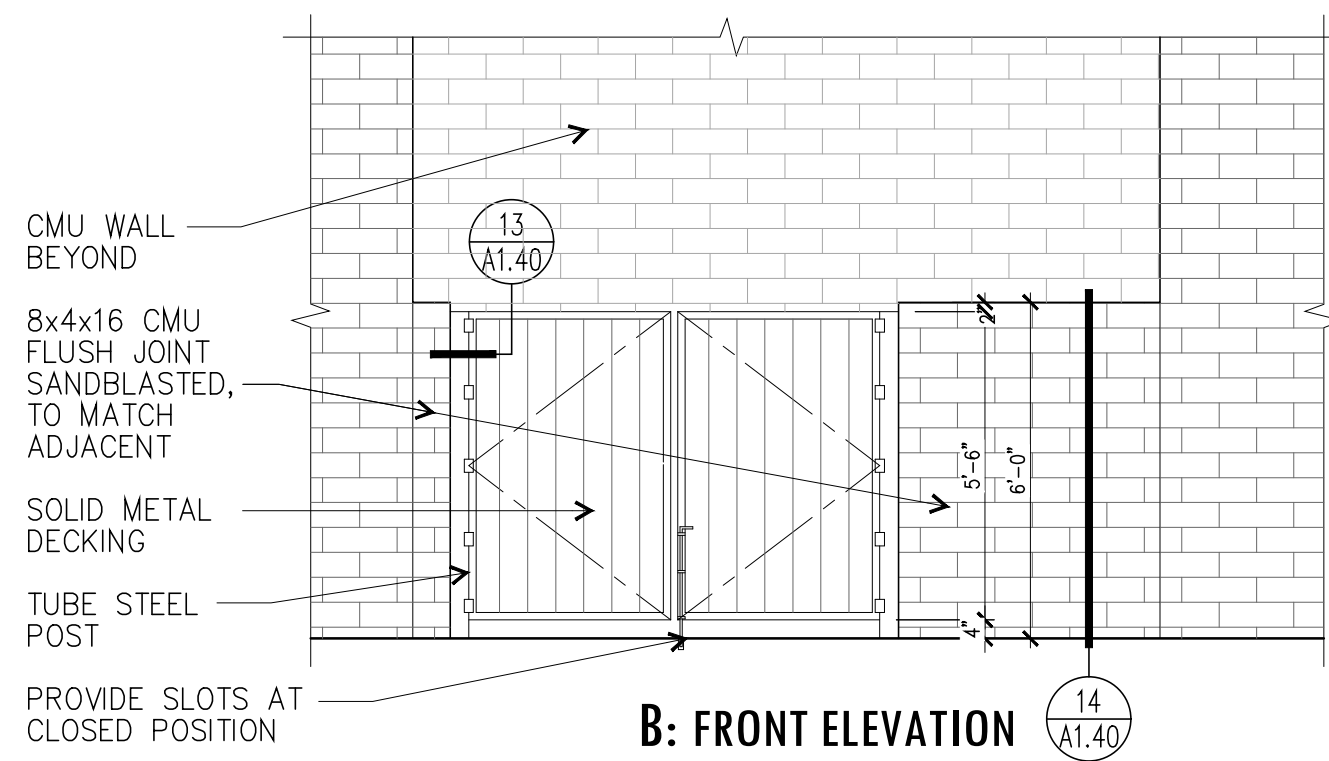


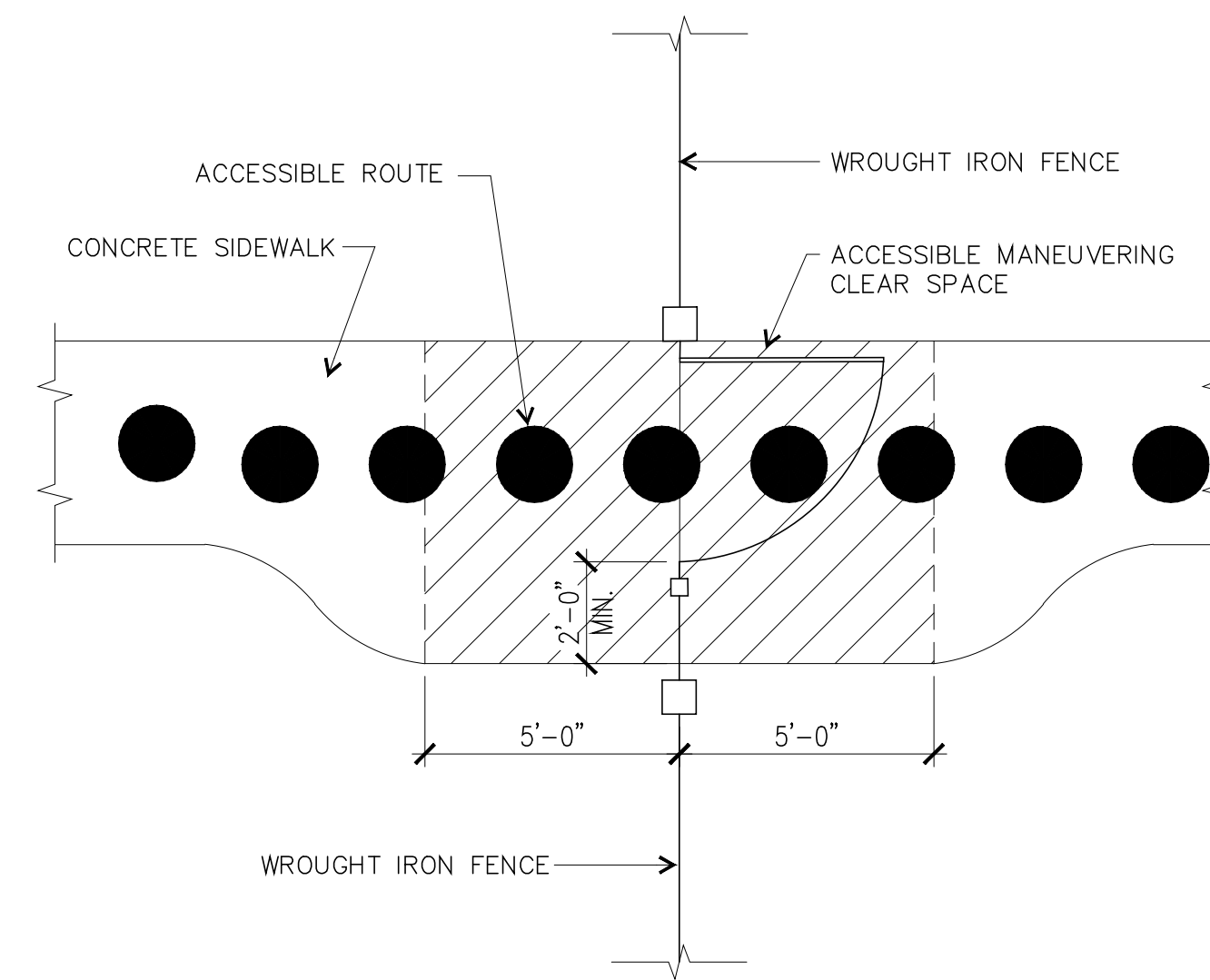
**13 TRASH ENCLOSURE GATE**  
SCALE: 3" = 1'-0"



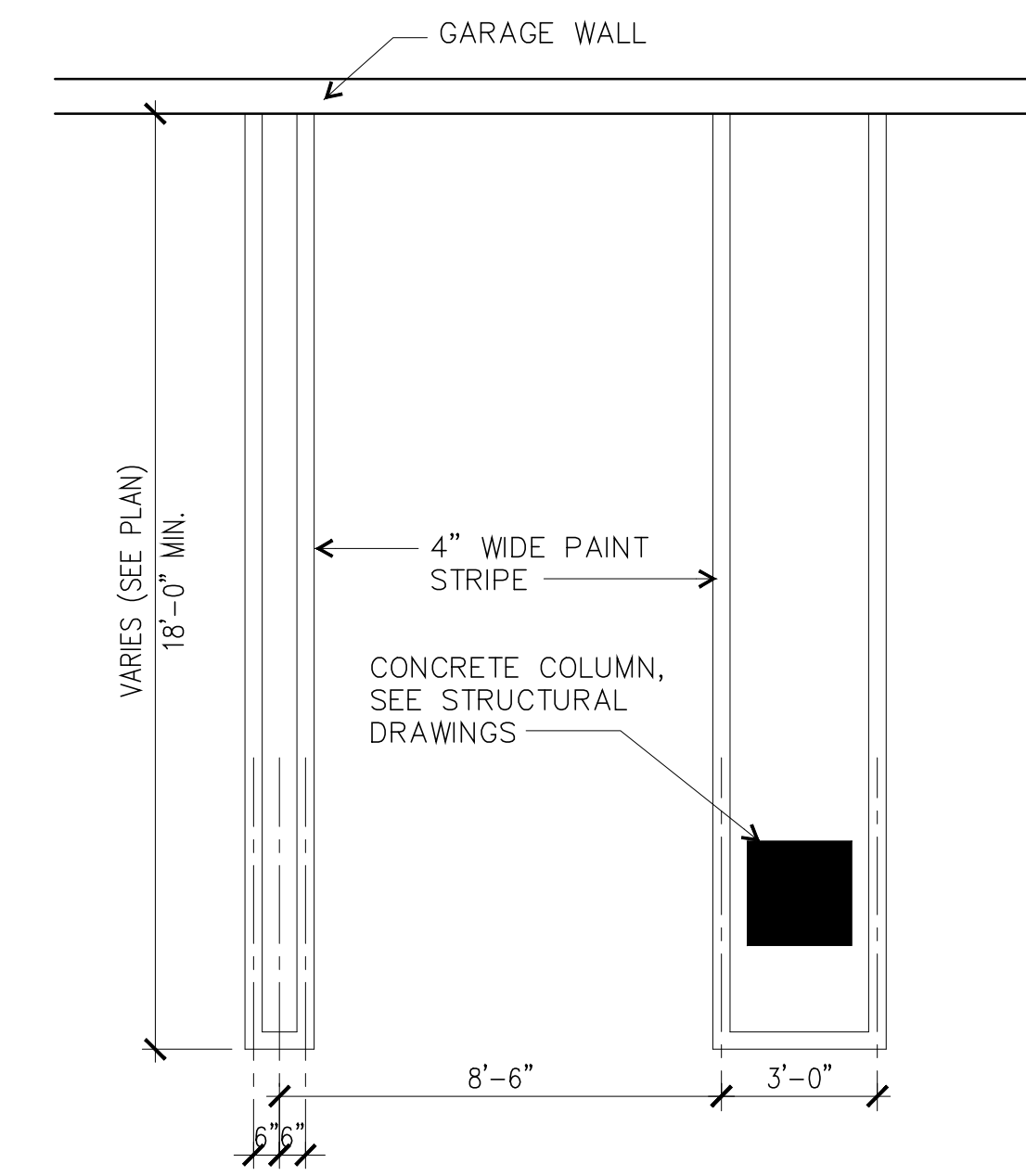
**10 HOLD ROOM ENCLOSURE - FLOOR PLAN**  
SCALE: 1/4" = 1'-0"



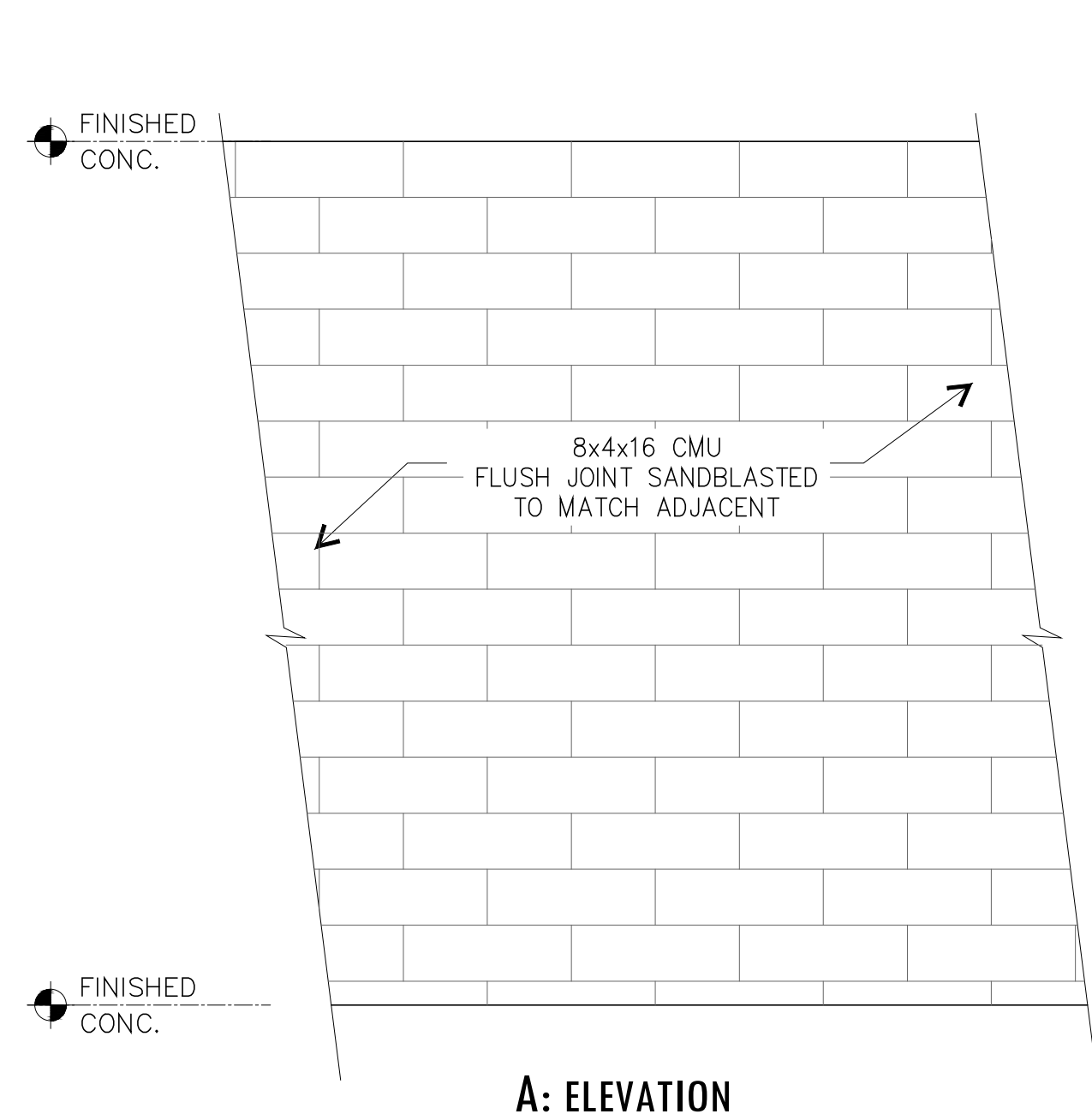
**07 HOLD ROOM ENCLOSURE - ELEVATION**  
SCALE: 1/4" = 1'-0"



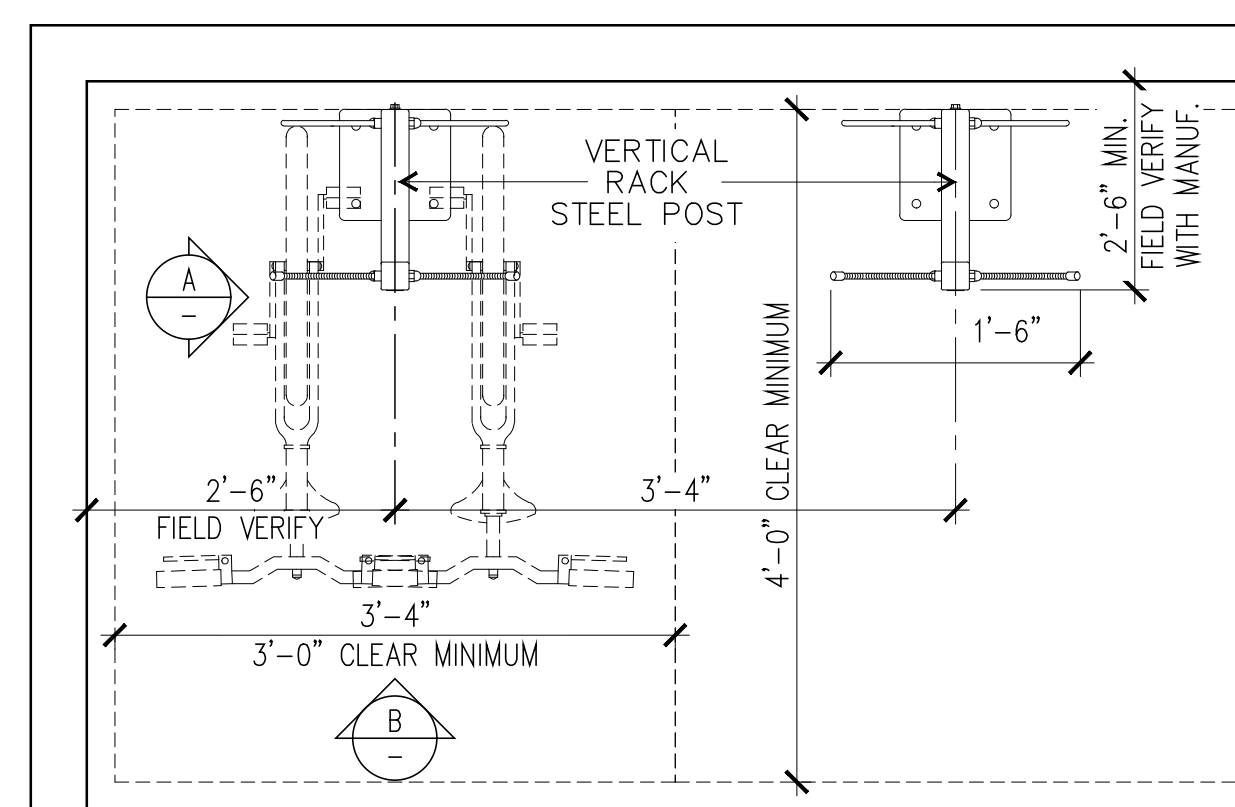
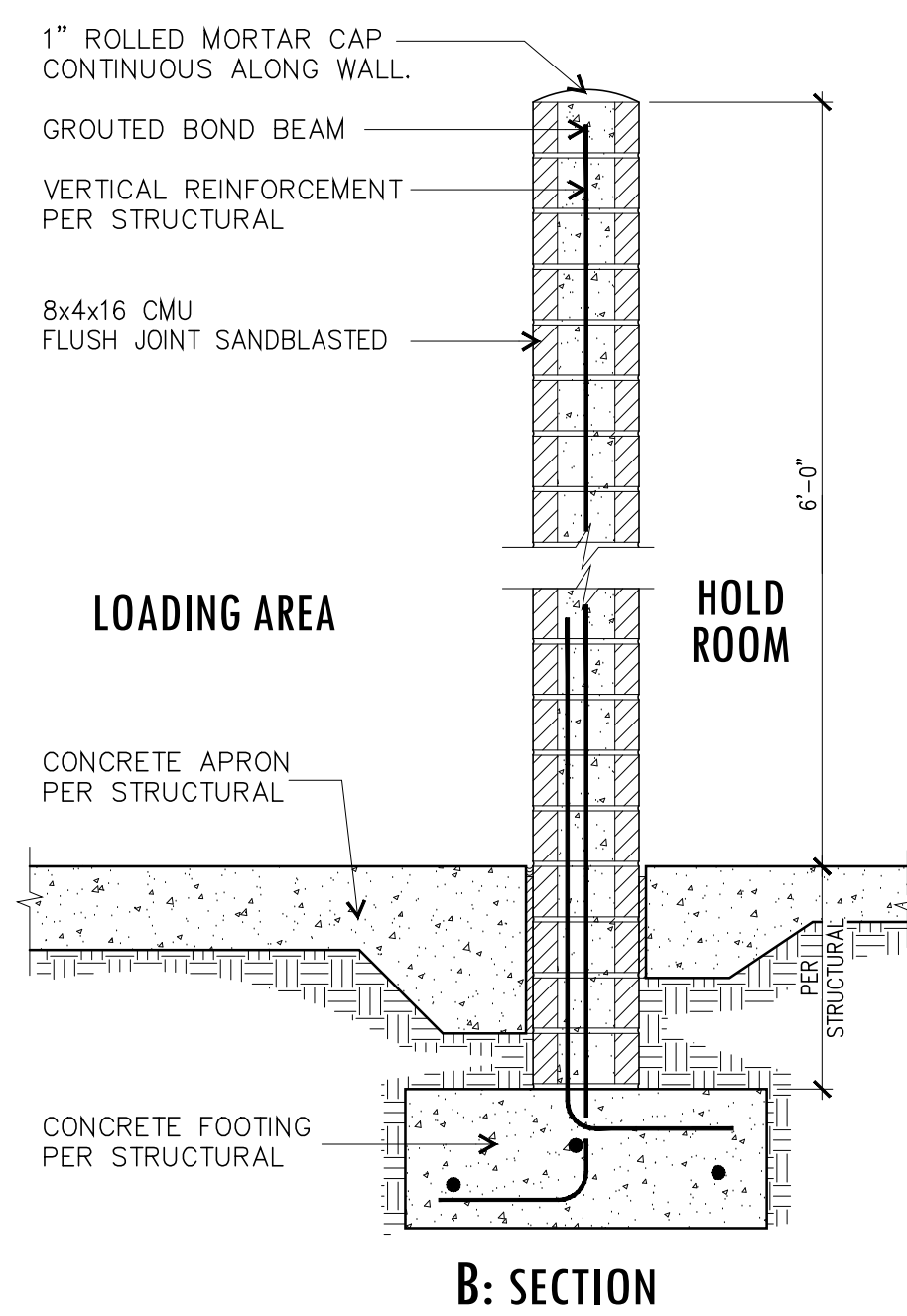
**04 ACCESSIBLE MANEUVERING SPACE AT GATES**  
SCALE: 1/4" = 1'-0"



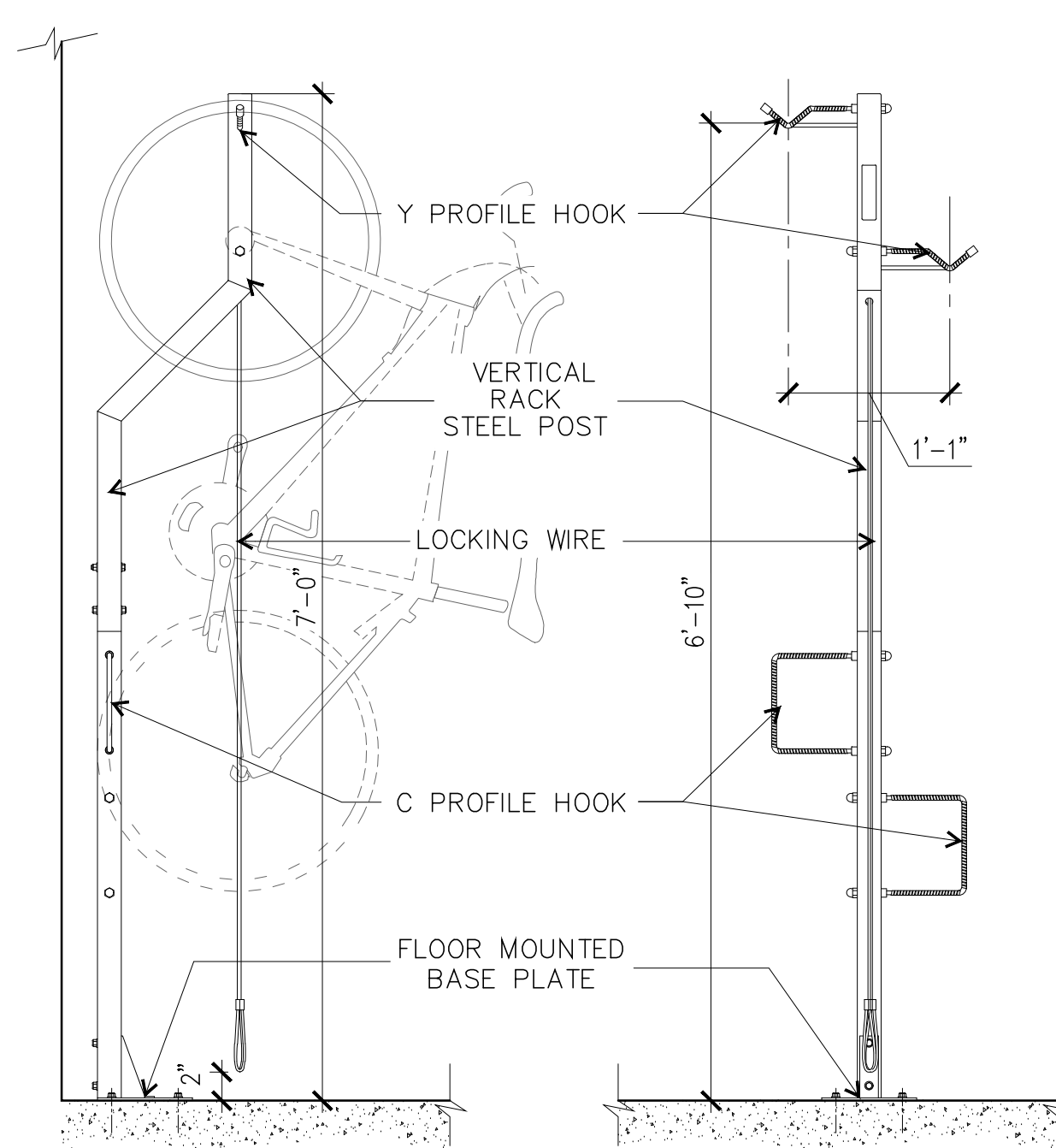
**01 TYPICAL DOUBLE STRIPING AT GARAGE**  
SCALE: 1/4" = 1'-0"



**14 SCREEN MASONRY WALL**  
SCALE: 3/4" = 1'-0"



**C: FLOOR PLAN**



**A: SIDE ELEV. B: FRONT ELEV.**

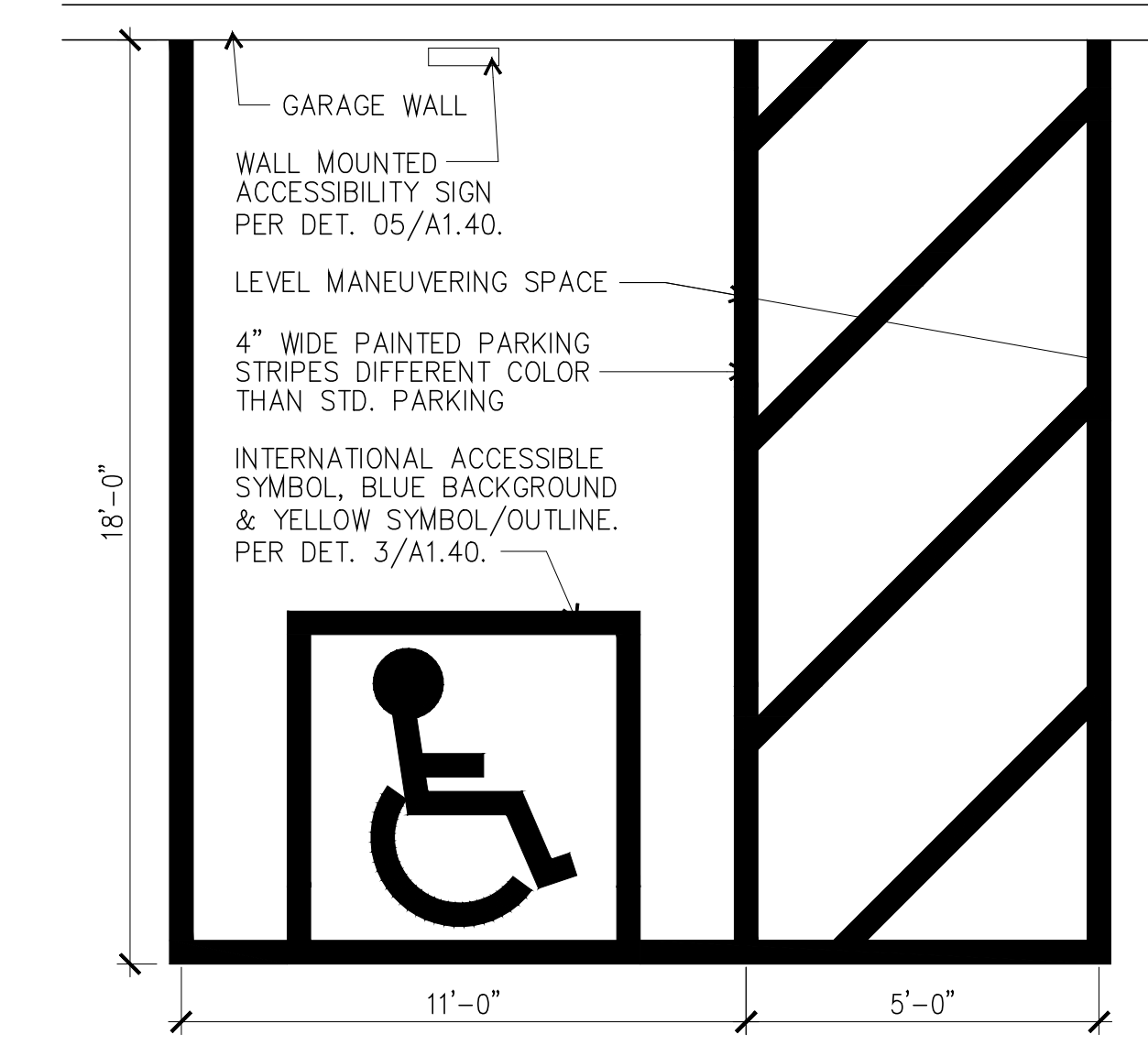
NOTES:  
1. SECURABIKE-BR2101 VERTICAL RACK, INSTALL PER MANUFACTURER WRITTEN SPECIFICATIONS  
2. EACH POST PARKS TWO BICYCLES  
3. PAINT METAL BIKE RACK - DUNN EDWARDS 6378 JET

**09 BICYCLE RACKS**  
SCALE: 3/4" = 1'-0"



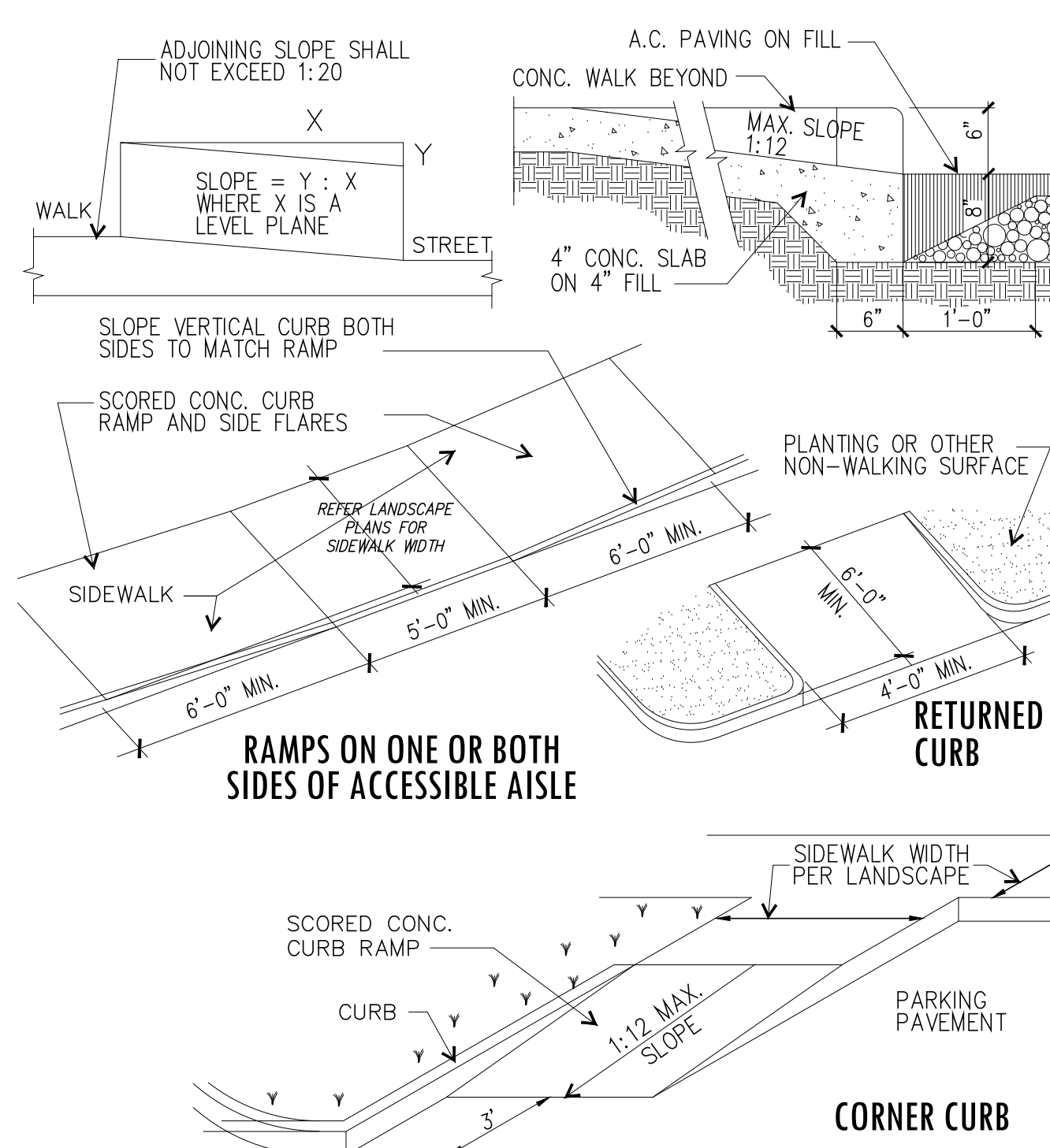
1. LETTERS AND NUMBERS ON SIGNS SHALL HAVE A WIDTH-TO-HEIGHT RATIO BETWEEN 3:5 AND 1:1 AND A STROKE WIDTH-TO-HEIGHT RATIO BETWEEN 1:5 AND 1:10.  
2. CHARACTERS AND SYMBOLS SHALL CONTRAST WITH THEIR BACKGROUND - EITHER LIGHT CHARACTERS ON A DARK BACKGROUND OR DARK CHARACTERS ON A LIGHT BACKGROUND.  
3. LETTERS AND NUMBERS ON SIGNS SHALL BE RAISED OR INCISED 1/32 IN. MIN. AND SHALL BE SANS SERIF CHARACTERS. RAISED CHARACTERS OR SYMBOLS SHALL BE AT LEAST 5/8 IN. HIGH, BUT NO HIGHER THAN 2 IN.

**05 ACCESSIBLE PARKING SIGN**  
NOT TO SCALE

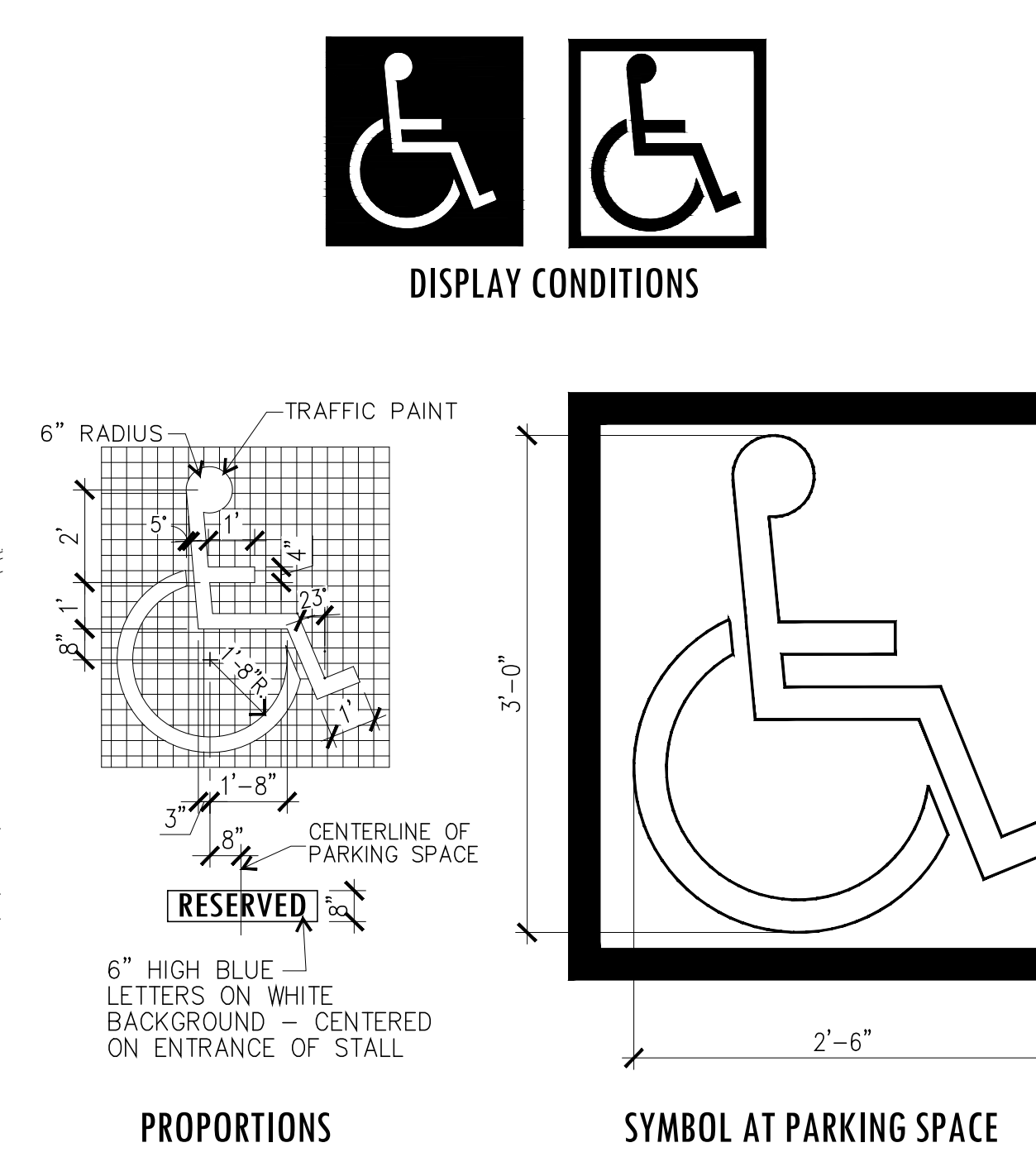


NOTES:  
1. 4% OF PARKING SPACES SHALL BE ACCESSIBLE.  
2. MAX. SLOPE OF PARKING AND MANEUVERING AREA TO BE 1 IN 50 IN ANY DIRECTION.

**02 TYPICAL ACCESSIBLE PARKING STALL**  
SCALE: 1/4" = 1'-0"



**06 TYPICAL ACCESSIBLE RAMP**  
NOT TO SCALE



**03 INTERNATIONAL SYMBOL OF ACCESSIBILITY**  
NOT TO SCALE

**TOLL MAZA**  
7570 EAST 6TH AVENUE  
SCOTTSDALE, AZ 85251

Office of Rich Barber  
**ORB**  
Architecture, LLC  
WorldHQ@ORBArch.com

REGISTERED ARCHITECT  
15213  
Rich Barber  
PRELIMINARY  
NOT FOR  
CONSTRUCTION  
**Toll Brothers**  
America's Luxury Home Builder™

**REVISIONS**


**DRB SUBMITTAL**  
DATE: JANUARY 17, 2022 ORB # 19-220

**A1.40**  
SITE DETAILS  
01-15

FILE: I:\000\ORB Job Files\19-220\_TB\_The Miller\CAD Files\Preliminary\19220\_A1.40\_Site\_Details.dwg USER: rbg DATE: Jan, 25, 2022 TIME: 08:01 am