

ELECTRICAL SYMBOL SCHEDULE

PLEASE NOTE:
THIS IS A MASTER ELECTRICAL SYMBOL SCHEDULE. ALL SYMBOLS MAY NOT APPLY DIRECTLY TO THIS JOB. ALL MOUNTING HEIGHTS SHOWN TO CENTERLINE OF DEVICE, UNLESS NOTED OTHERWISE. SEE SPECIFICATIONS OR PLAN NOTES FOR MANUFACTURERS AND PART NUMBERS.

	LUMINAIRE (NUMBER INDICATES CIRCUIT, CAPITAL LETTER INDICATES LUMINAIRE TYPE, LOWER CASE LETTER INDICATES SWITCHING CONTROL) TYPICAL FOR ALL LUMINAIRES
	WALL MOUNTED LUMINAIRE
	LUMINAIRE
	STRIP LUMINAIRE
	LUMINAIRE WITH EMERGENCY BATTERY PACK OR ON EMERGENCY LIGHTING CIRCUIT (BATTERY PACK SHALL NOT BE SWITCHED); IF NOT ON EMERGENCY CIRCUIT, SHADDED LUMINAIRE INDICATES UNSWITCHED NIGHT LIGHT
	LIGHTING TRACK WITH LUMINAIRES
	POLE MOUNTED AREA LUMINAIRE WITH CONCRETE BASE
	POST TOP MOUNTED AREA LUMINAIRE WITH CONCRETE BASE
	FLOODLIGHT LUMINAIRE, SINGLE OR DOUBLE LAMP LUMINAIRE
	SINGLE FACE, UNIVERSAL MOUNT EXIT LIGHT (WITH BATTERY, UNO)
	DOUBLE FACE, UNIVERSAL MOUNT EXIT LIGHT (WITH BATTERY, UNO)
	EMERGENCY BATTERY PACK LUMINAIRE, WALL MOUNT AT 12" BELOW CEILING UNO
	JUNCTION BOX (4" SQUARE UNO), DEPTH AS REQUIRED
	ELECTRICAL CONNECTION OR POINT OF TERMINATION
	JUNCTION BOX WITH FLEX CONNECTION TO LUMINAIRE OR EQUIPMENT
	FLUSH FLOOR JUNCTION BOX WITH COVER PLATE UNO
	TOGGLE SWITCHES - SINGLE POLE/SINGLE THROW, THREE WAY, +44" UNO
	DUAL TECHNOLOGY OCCUPANCY SENSOR, +44" UNO
	CEILING MOUNTED DUAL TECHNOLOGY OCCUPANCY SENSOR
	DIMMER SWITCH, 1800VA, +44" UNO
	FUSIBLE HOLDER WITH SWITCH ADAPTER AND FUSE AS REQUIRED
	KEYED SWITCH, +44" UNO
	MANUAL MOTOR STARTING SWITCH WITH OVERLOAD PROTECTION
	SINGLE POLE TOGGLE SWITCH WITH PILOT LIGHT, +44" UNO

ABBREVIATIONS

A	AMPERE	KCM	KCMIL, MCM, THOUSAND CIRCULAR MILS
AFG	AVAILABLE FAULT CURRENT	KVA	KILOVOLT AMPERE
AFF	ABOVE FINISHED FLOOR	KW	KILOWATT
AFG	ABOVE FINISHED GRADE	LTG	LIGHTING
AIC	AMPERE INTERRUPTING CAPACITY	MBJ	MAIN BONDING JUMPER
AL	ALUMINUM	MCB	MAIN CIRCUIT BREAKER
ARCH	ARCHITECT	MDF	MAIN DISTRIBUTION FRAME
C	CONDUIT	MH	MANHOLE
CB	CIRCUIT BREAKER	N	NEUTRAL
CKT	CIRCUIT	NEC	NATIONAL ELECTRICAL CODE
CT	CURRENT TRANSFORMER	NF	NON-FUSED
CU	COPPER	NL	NIGHT LIGHT
CWB	COLD WATER BOND	PNL	PANEL
DB	DIRECT BURIED	SES	SERVICE ENTRANCE SECTION
DISC	DISCONNECT SW	SK	SWITCH
DN	DOWN	SWBD	SWITCHBOARD
EC	EMPTY CONDUIT	TYP	TYPICAL
EDF	ELECTRIC DRINKING FOUNTAIN	UG	UNDER COUNTER
EF	EXHAUST FAN	UNO	UNLESS NOTED OTHERWISE
FBO	FURNISHED BY OWNER, INSTALLED BY ELECTRICAL CONTRACTOR	VP	VANDALPROOF
		WH	WATER HEATER
GF	GROUND FAULT CIRCUIT INTERRUPTER	WP	WEATHER-PROOF (NEMA-3R UNO)
		WR	WEATHER-RESISTANT
GFCI	GROUND FAULT CIRCUIT INTERRUPTER	X	EXISTING TO REMAIN
		XFMR	TRANSFORMER
GRD	GROUND	XR	EXISTING TO BE REMOVED
S	GROUND	XRR	EXISTING TO BE REMOVED AND RELOCATED
IT	INFORMATION TECHNOLOGY		

SITE LIGHTING SPECIFICATIONS

PART 1 - GENERAL

1.01 SECTION INCLUDES

- A. EXTERIOR LUMINAIRES AND ACCESSORIES.
B. POLES.
C. BASES.

1.02 RELATED SECTIONS

- A. SECTION 26 05 19 _ BUILDING WIRE AND CABLE.

1.03 REFERENCES

- A. ANSI C78.371 _ ELECTRIC LAMPS _ INCANDESCENT AND HIGH- INTENSITY DISCHARGE REFLECTOR LAMPS _ CLASSIFICATION OF BEAM PATTERNS.
B. ANSI C82.1 _ BALLASTS FOR FLUORESCENT LAMPS_ SPECIFICATIONS.
C. ANSI C82.4 _ BALLASTS FOR HIGH-INTENSITY- DISCHARGE AND LOW-PRESSURE SODIUM LAMPS (MULTIPLE-SUPPLY TYPE).
D. ANSI/NFPA 70 _ NATIONAL ELECTRICAL CODE.
E. ANSI/IES RP_8 _ RECOMMENDED PRACTICE FOR ROADWAY LIGHTING.
F. ANSI/IES RP_20 _ LIGHTING FOR PARKING FACILITIES.

1.04 SUBMITTALS

- A. SUBMIT UNDER PROVISIONS OF SECTION 26 05 00 AND DIVISION 01.
B. SHOP DRAWINGS: INDICATE DIMENSIONS AND COMPONENTS FOR EACH LUMINAIRE WHICH IS NOT A STANDARD PRODUCT OF THE MANUFACTURER.
C. PRODUCT DATA: PROVIDE DIMENSIONS, RATINGS, AND PERFORMANCE DATA.
D. MANUFACTURER'S INSTRUCTIONS: INCLUDE INSTRUCTIONS FOR STORAGE, HANDLING, PROTECTION, EXAMINATION, PREPARATION, INSTALLATION, AND STARTING OF PRODUCT.

1.05 PROJECT RECORD DOCUMENTS

- A. ACCURATELY RECORD ACTUAL LOCATIONS OF EACH LUMINAIRE.

1.06 OPERATION AND MAINTENANCE DATA

- A. MAINTENANCE DATA: INCLUDE INSTRUCTIONS FOR MAINTAINING LUMINAIRES.

1.07 QUALIFICATIONS

- A. MANUFACTURER: COMPANY SPECIALIZING IN MANUFACTURING PRODUCTS SPECIFIED IN THIS SECTION WITH MINIMUM THREE YEARS EXPERIENCE.

1.08 REGULATORY REQUIREMENTS

- A. CONFORM TO REQUIREMENTS OF ANSI/NFPA 70.
B. FURNISH PRODUCTS LISTED AND CLASSIFIED BY UNDERWRITERS LABORATORIES, INC. AS SUITABLE FOR PURPOSE SPECIFIED AND SHOWN.

1.09 DELIVERY, STORAGE, AND HANDLING

- A. ACCEPT PRODUCTS ON SITE. INSPECT FOR DAMAGE.
B. PROTECT POLES FROM FINISH DAMAGE BY HANDLING CAREFULLY.

1.10 COORDINATION

- A. FURNISH BOLT TEMPLATES AND POLE MOUNTING ACCESSORIES TO INSTALLER OF POLE FOUNDATIONS.

PART 2 - PRODUCTS

2.01 LUMINAIRES

- A. FURNISH PRODUCTS AS SPECIFIED ON DRAWINGS.

2.02 BALLASTS

- A. FLUORESCENT BALLAST:
1. MANUFACTURERS:
A. ADVANCE.

- B. MAGNETEK.
C. UNIVERSAL.
2. DESCRIPTION: ANSI C82.1, HIGH POWER FACTOR TYPE ELECTROMAGNETIC BALLAST.
3. PROVIDE BALLAST SUITABLE FOR LAMPS SPECIFIED.
4. VOLTAGE: MATCH LUMINAIRE VOLTAGE.
B. HIGH INTENSITY DISCHARGE (HID) BALLAST:
1. MANUFACTURERS:
A. ADVANCE.
B. MAGNETEK.
C. UNIVERSAL.

2. DESCRIPTION: ANSI C82.4, METAL HALIDE LOW PRESSURE SODIUM, HIGH PRESSURE SODIUM LAMP BALLAST.
3. PROVIDE BALLAST SUITABLE FOR LAMP SPECIFIED.
4. VOLTAGE: MATCH LUMINAIRE VOLTAGE.

2.03 LAMPS

- A. PROVIDE LAMP TYPE SPECIFIED FOR LUMINAIRE.

2.04 POLES

- A. MANUFACTURERS: AS INDICATED ON DRAWINGS.
B. HEIGHT: AS INDICATED ON DRAWINGS.
C. ACCESSORIES:
1. HANDHOLE.
D. LOADING CAPACITY RATINGS: AS INDICATED ON THE DRAWINGS.

2.05 BASES

- A. PROVIDE CONCRETE POLE BASES AS REQUIRED AND AS INDICATED ON DRAWINGS.
B. PROVIDE ANCHOR BOLTS.

PART 3 - EXECUTION

3.01 EXAMINATION

- A. EXAMINE EXCAVATION AND CONCRETE FOUNDATION FOR LIGHTING POLES.
B. EXAMINE EACH LUMINAIRE TO DETERMINE SUITABILITY FOR LAMPS SPECIFIED.

3.02 INSTALLATION

- A. INSTALL IN ACCORDANCE WITH MANUFACTURERS' INSTRUCTIONS.
B. INSTALL LIGHTING POLES AT LOCATIONS INDICATED.
C. INSTALL POLES PLUMB. PROVIDE SHIMS AND/OR DOUBLE NUTS TO ADJUST PLUMB. GROUT AROUND EACH BASE.
D. INSTALL LAMPS IN EACH LUMINAIRE.
E. BOND LUMINAIRES, METAL ACCESSORIES AND METAL POLES TO BRANCH CIRCUIT EQUIPMENT GROUNDING CONDUCTOR.

3.03 FIELD QUALITY CONTROL

- A. INSPECT EACH INSTALLED FIXTURE FOR DAMAGE, REPLACE DAMAGED FIXTURES AND COMPONENTS.
B. OPERATE EACH LUMINAIRE AFTER INSTALLATION AND CONNECTION. INSPECT FOR IMPROPER CONNECTIONS AND OPERATION.

3.04 ADJUSTING

- A. AIM AND ADJUST LUMINAIRES TO PROVIDE ILLUMINATION LEVELS AND DISTRIBUTION INDICATED ON DRAWINGS.
B. RELAMP LUMINAIRES WHICH HAVE FAILED LAMPS AT DATE OF SUBSTANTIAL COMPLETION.

3.05 CLEANING

- A. CLEAN ELECTRICAL PARTS TO REMOVE CONDUCTIVE AND DELETERIOUS MATERIALS.
B. REMOVE DIRT AND DEBRIS FROM ENCLOSURE.
C. CLEAN PHOTOMETRIC CONTROL SURFACES AS RECOMMENDED BY MANUFACTURER.
D. CLEAN FINISHES AND TOUCH UP PAINT OR SURFACE DAMAGE.

GENERAL SCOPE OF WORK

DRB PHOTOMETRIC SET FOR CITY SUBMITTAL.

LUMINAIRE SCHEDULE								
SYMBOL	Mk	MANUF.	CATALOG No.	LAMPS	LAMP WATTS	VOLT	MOUNTING	REMARKS
	AE-1	BARN LIGHT ELECTRIC CO.	ASE12-44T-022-480-NA-NA-NA-NA-NA-LED21-5000K-DL	3000K LED 2000 LUMENS	21	120	SURFACE	LED SIGN LUMINAIRE
	AE-12	USA1	3110-X-81-S-X-LSTD4-4024-C8-50K5-25-NC-120V-X-X	3000K LED 2085 LUMENS	24	120V	RECESSED	RECESSED CEILING MOUNTED DOWNLIGHT
	C	KIM LIGHTING	PGL8-50-12BL-85-4KT-UVV-LGT-NXSP-30F-SF-EM	4000K LED 4800 LUMENS	85	120	SURFACE	LED PARKING STRUCTURE LUMINAIRE
	F	LITHONIA LIGHTING	DSX0LED-PS-40K-T3M MVOLT-9FA-DLL121F18	4000K LED 8452 LUMENS	71	120	POLE	FULL CUTOFF, POLE MOUNTED LED, TYPE B OPTICS, INTEGRAL PHOTOCELL

ELECTRICAL DRAWING INDEX	
DWG No.	TITLE
PH001	SYMBOLS, LUMINAIRE SCHEDULE, & SPECIFICATIONS
PH101	SITE LIGHTING PLAN
PH201	SITE PHOTOMETRIC PLAN
PH202	SITE TRESPASS PHOTOMETRIC PLAN
PH301	LIGHTING CUTSHEETS
PH302	LIGHTING CUTSHEETS

PRELIMINARY
NOT FOR
CONSTRUCTION

PAPAGO PLAZA - SPROUTS

PIVOT DEVELOPMENT

1490 NORTH SCOTTSDALE ROAD
SCOTTSDALE, AZ 85257

Date
01 June 2022
Revisions

Drawings and written material appearing herein constitute original and unpublished work of the architect and may not be duplicated, used, or disclosed without written consent of the architect.

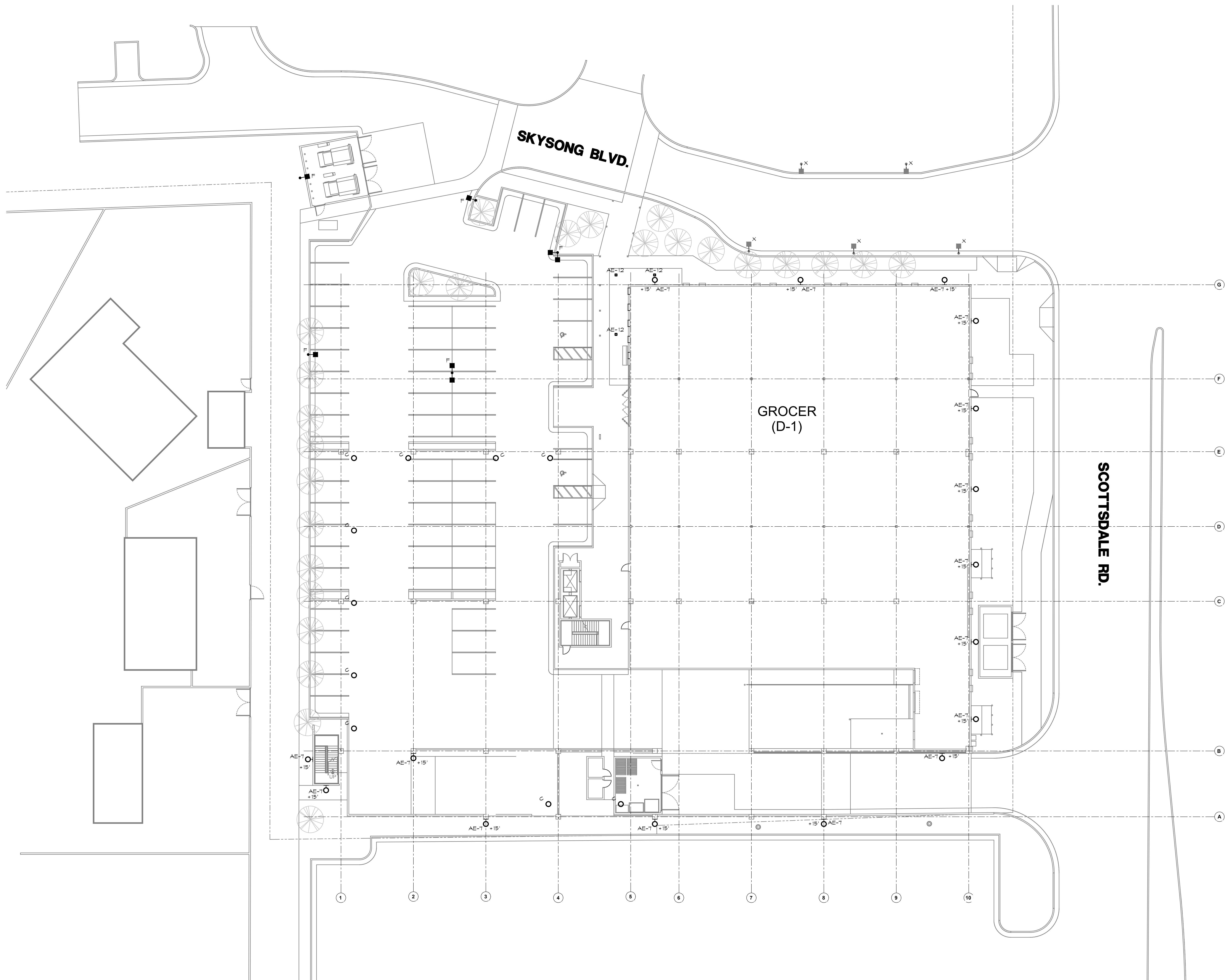
© 2018 NELSEN PARTNERS, INC.

Project No.
21087

PH101

SITE LIGHTING PLAN

18-DR-2022
6/9/2022



SITE LIGHTING PLAN

SCALE: 1/16" = 1'-0" FEET

0 8 16 32

