

REV #	DATE	ISSUE NAME
1	11.12.2021	CD Progress

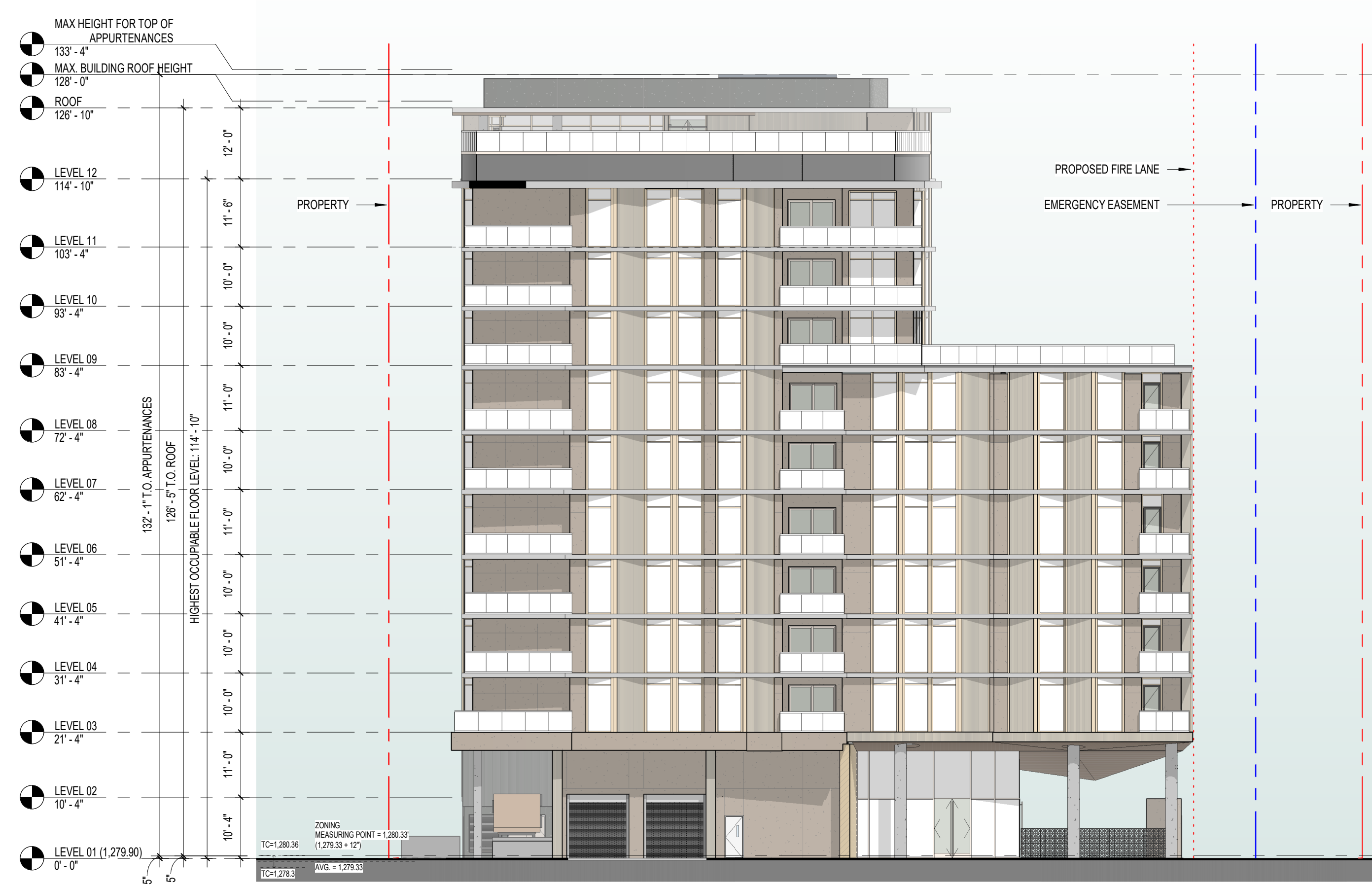
**NOT FOR  
REGULATORY  
APPROVAL,  
PERMITTING, OR  
CONSTRUCTION**

**MATERIAL LEGEND**

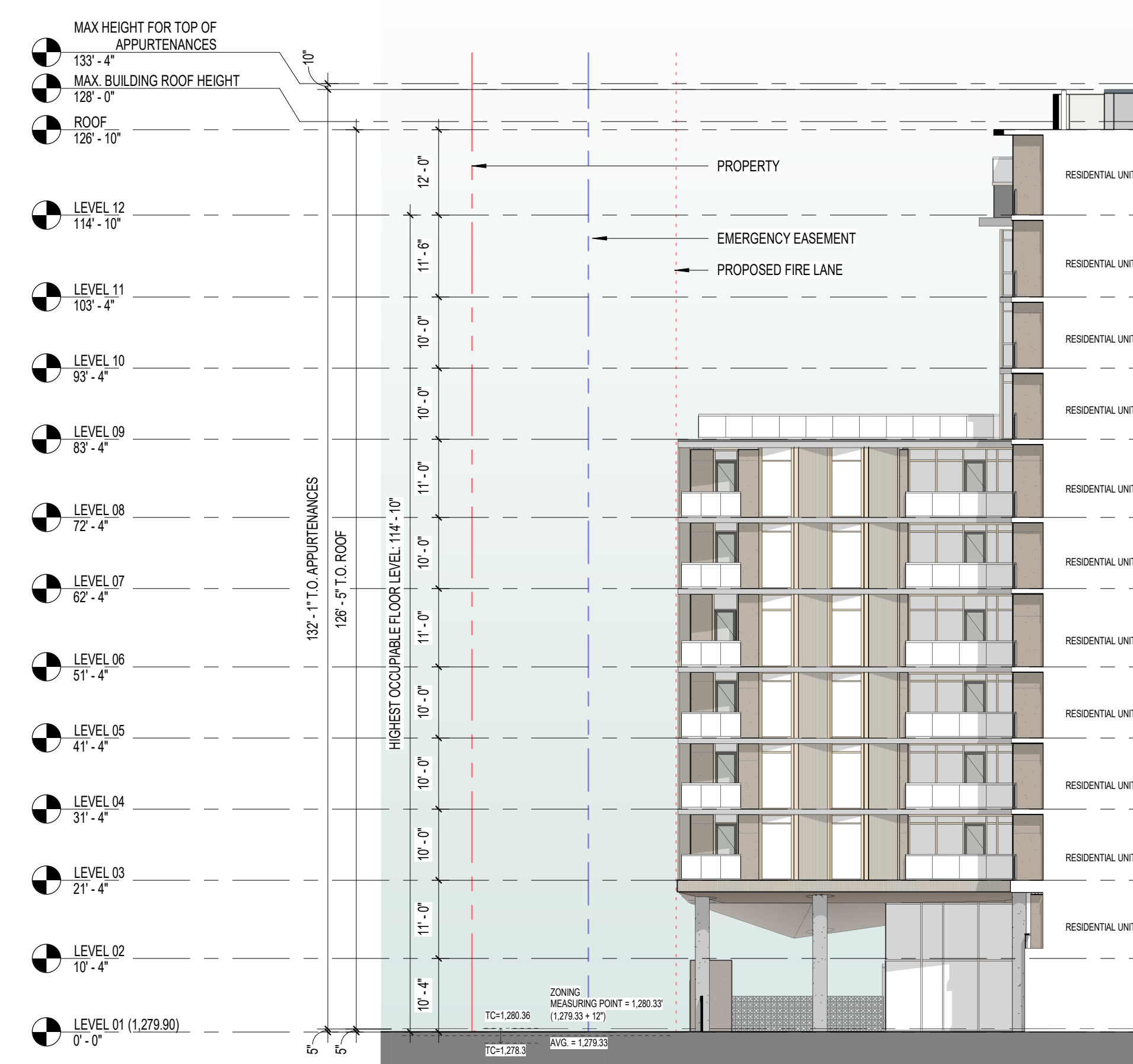
COLOR	HATCH	DESCRIPTION
CIP-01	[Solid Grey]	CAST IN PLACE CONCRETE
CIP-02	[Dotted Grey]	EXPOSED ARCHITECTURAL CONCRETE
GL-01	[Diagonal Lines]	GLASS TYPICAL
MTL-01	[Horizontal Lines]	METAL PANEL SHARK FIN PROFILE, SAGO SHELL FINISH
MTL-02	[Vertical Lines]	METAL PANEL FLAT VERTICAL PROFILE, BLACK GOLD FINISH
MTL-05	[Diagonal Lines]	ALUMINUM WINDOW SYSTEM CLEAR ANODIZED ALUMINUM FINISH
MTL-07	[Diagonal Lines]	ALUMINUM WINDOW SYSTEM CHAMPAGNE GOLD FINISH
MTL-08	[Diagonal Lines]	METAL PICKET RAILING, INKWELL
PCP-01	[Stippled Grey]	PORTLAND CEMENT PLASTER VENEER, PERFECT GREIGE
PCP-02	[Stippled Grey]	PORTLAND CEMENT PLASTER VENEER, WEB GREY
PCP-03	[Stippled Grey]	PORTLAND CEMENT PLASTER VENEER, PURE WHITE
ST-01	[Diagonal Lines]	TEXTURAL STONE, LIGHT BEIGE
VL-01	[Diagonal Lines]	VINYL WINDOWS & DOORS, DARK GREY
WD-01	[Diagonal Lines]	DECORATIVE WOOD COMPOSITE CLADDING CEILING



① SOUTH WEST ELEVATION  
1/16" = 1'-0"



② NORTH WEST ELEVATION  
1/16" = 1'-0"



④ COURTYARD SOUTH EAST ELEVATION  
1/16" = 1'-0"



③ COURTYARD NORTH WEST ELEVATION  
1/16" = 1'-0"

REV #	DATE	ISSUE NAME
1	11.12.2021	CD Progress

**NOT FOR  
REGULATORY  
APPROVAL,  
PERMITTING, OR  
CONSTRUCTION**

**MATERIAL LEGEND**

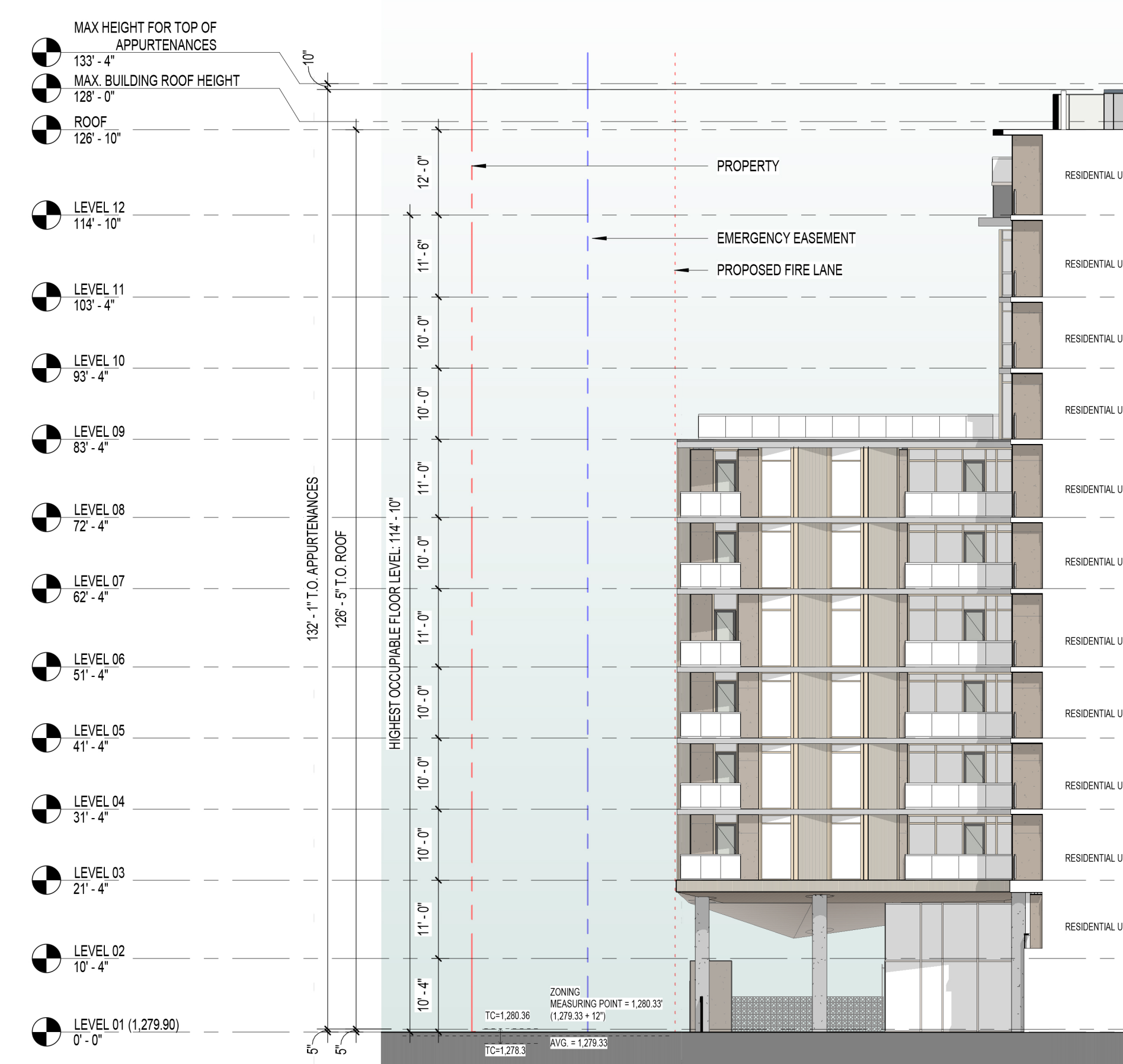
COLOR	HATCH	DESCRIPTION
CIP-01	[Hatch]	CAST IN PLACE CONCRETE
CIP-02	[Hatch]	EXPOSED ARCHITECTURAL CONCRETE
GL-01	[Hatch]	GLASS TYPICAL
MTL-01	[Hatch]	METAL PANEL, SHARK FIN PROFILE, SAGO SHELL FINISH
MTL-02	[Hatch]	METAL PANEL, FLAT VERTICAL PROFILE, BLACK GOLD FINISH
MTL-05	[Hatch]	ALUMINUM WINDOW SYSTEM, CLEAR ANODIZED ALUMINUM FINISH
MTL-07	[Hatch]	ALUMINUM WINDOW SYSTEM, CHAMPAGNE GOLD FINISH
MTL-08	[Hatch]	METAL PICKET RAILING, INKWELL
PCP-01	[Hatch]	PORTLAND CEMENT PLASTER VENEER, PERFECT GREIGE
PCP-02	[Hatch]	PORTLAND CEMENT PLASTER VENEER, WEB GREY
PCP-03	[Hatch]	PORTLAND CEMENT PLASTER VENEER, PURE WHITE
ST-01	[Hatch]	TEXTURAL STONE, LIGHT BEIGE
VL-01	[Hatch]	VINYL WINDOWS & DOORS, DARK GREY
WD-01	[Hatch]	DECORATIVE WOOD COMPOSITE CLADDING CEILING



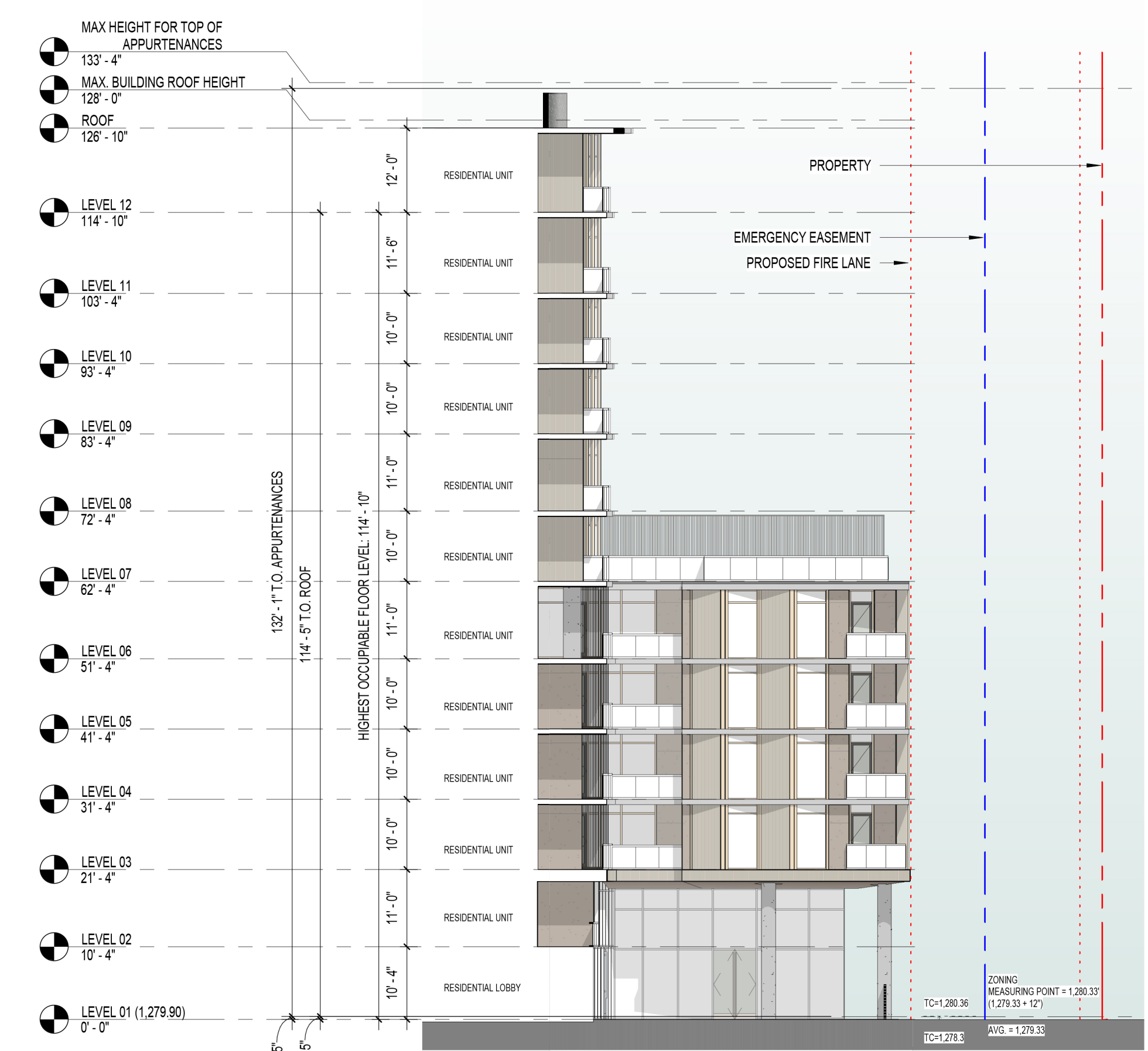
① SOUTH WEST ELEVATION  
1/16" = 1'-0"



② NORTH WEST ELEVATION  
1/16" = 1'-0"



④ COURTYARD SOUTH EAST ELEVATION  
1/16" = 1'-0"



③ COURTYARD NORTH WEST ELEVATION  
1/16" = 1'-0"



