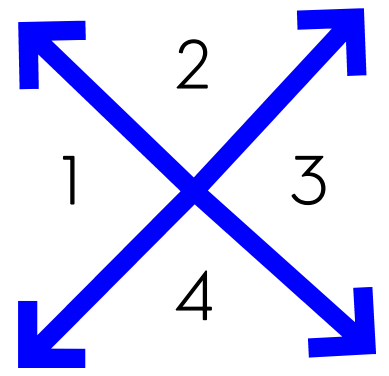
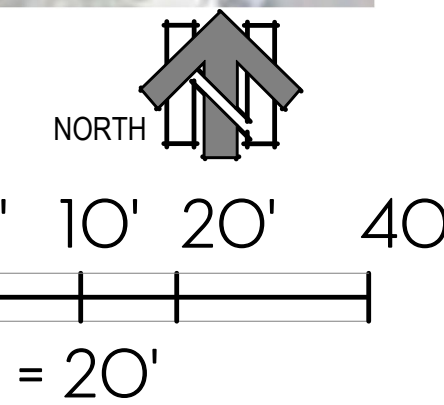
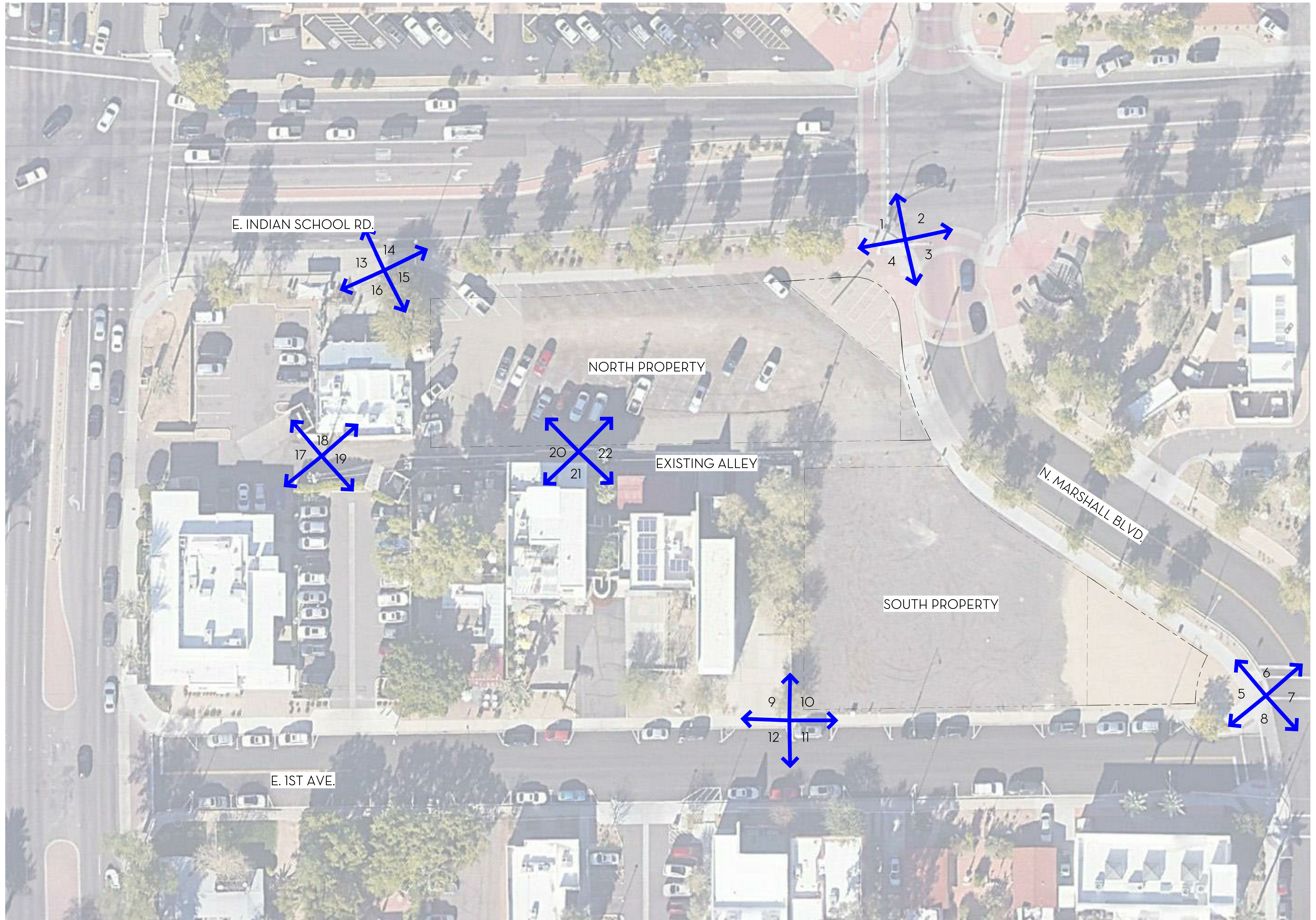


THE ARTISAN SCOTTSDALE

LEGEND



VIEW POINTS





1 VIEW LOOKING TOWARDS THE NORTHWEST FROM THE INDIAN SCHOOL RD AND MARSHALL BLVD. INTERSECTION TO THE ADJACENT COMMERCIAL STREET



2 VIEW LOOKING TOWARDS THE NORTHEAST FROM THE INDIAN SCHOOL RD AND MARSHALL BLVD. INTERSECTION TO THE COMMERCIAL STREETSCAPE



3 VIEW LOOKING TOWARDS THE SOUTHEAST FROM THE INDIAN SCHOOL RD AND MARSHALL BLVD. INTERSECTION TO THE MARSHALL STREETSCAPE



4 VIEW LOOKING TOWARDS THE SOUTHWEST FROM THE INDIAN SCHOOL RD AND MARSHALL BLVD. INTERSECTION TO THE NORTHEAST CORNER OF THE SITE



5 VIEW LOOKING TOWARDS THE NORTHWEST FROM THE MAIN STREET AND MARSHALL BLVD. INTERSECTION AT THE SOUTHEAST CORNER OF THE SITE



6 VIEW LOOKING TOWARDS THE NORTH FROM THE MAIN STREET AND MARSHALL BLVD. INTERSECTION AT THE MARSHALL STREETScape



7 VIEW LOOKING TOWARDS THE SOUTHEAST FROM THE MAIN STREET AND MARSHALL BLVD. INTERSECTION TOWARDS THE ADJACENT COMMERCIAL STREET



8 VIEW LOOKING TOWARDS THE SOUTH FROM MAIN STREET AND MARSHALL BLVD. INTERSECTION



9 VIEW LOOKING TOWARDS THE NORTHWEST FROM MAIN STREET TOWARDS THE ADJACENT BUSINESSES TO THE WEST OF THE SITE



10 VIEW LOOKING TOWARDS THE NORTHEAST FROM MAIN STREET TOWARD THE SOUTHWEST CORNER OF THE SITE



11 VIEW LOOKING TOWARDS THE SOUTHEAST FROM MAIN STREET TOWARDS THE ADJACENT COMMERCIAL STREET



12 VIEW LOOKING TOWARDS THE SOUTHWEST FROM MAIN STREET TOWARDS THE COMMERCIAL STREET TO THE WEST OF THE SITE



13 VIEW LOOKING TOWARDS THE WEST FROM THE INDIAN SCHOOL RD AT THE GOLDWATER BLVD AND INDIAN SCHOOL INTERSECTION



14 VIEW LOOKING TOWARDS THE NORTH FROM THE INDIAN SCHOOL RD AT THE ADJACENT COMMERCIAL SHOPS



15 VIEW LOOKING TOWARDS THE SOUTHEAST FROM THE INDIAN SCHOOL RD TOWARDS THE NORTHWEST CORNER OF THE SITE



16 VIEW LOOKING TOWARDS THE SOUTHWEST FROM THE INDIAN SCHOOL RD AT THE ADJACENT COMMERCIAL SHOPS TO THE WEST OF THE SITE



20 VIEW LOOKING TOWARDS THE SOUTHWEST/WEST FROM THE ALLEY OF THE EXISTING GARBAGE WASTE CONDITIONS



21 VIEW LOOKING TOWARDS THE SOUTH FROM THE ALLEY AT THE BACKSIDE OF THE ADJACENT EXISTING BUILDING



22 VIEW LOOKING TOWARDS THE SOUTHEAST FROM THE ALLEY AT THE EXISTING WASTE ENCLOSURE