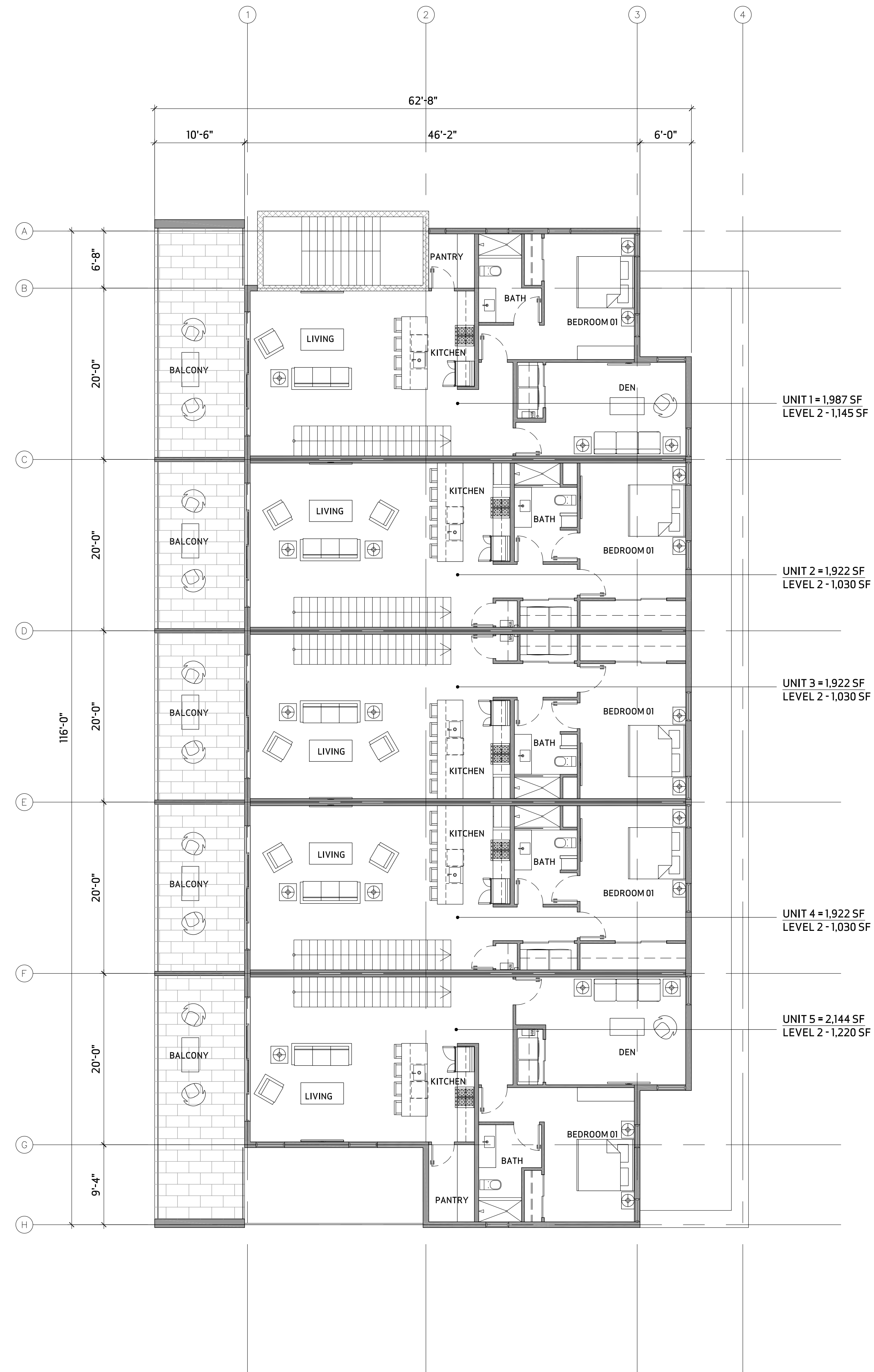


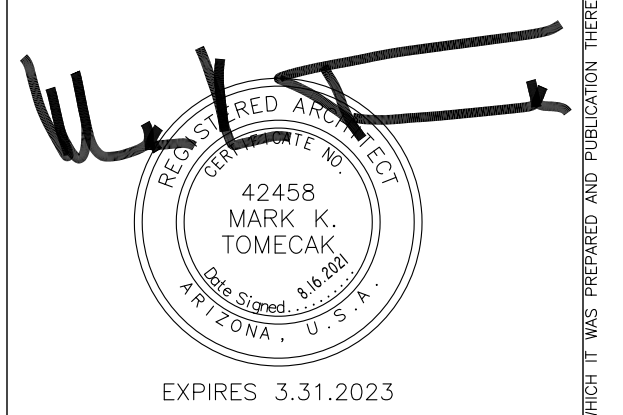
**TOMECAK
DESIGN**

4368 NORTH CIVIC CENTER PLAZA
SUITE 201
SCOTTSDALE, ARIZONA 85251

T 602.619.7751
F 480.718.8387
E INFO@TOMECAKDESIGN.COM



FLOOR PLAN - LEVEL 2
SCALE: 1/8"=1'-0"



PROJECT:
PALO ON 75TH
3961 N. 75TH STREET
SCOTTSDALE, ARIZONA 85251

REVISED:

JOB #: 2105

DATE: 08.16.2021

CONTENTS: FLOOR PLAN
LEVEL 2

SHEET No: **A1.01**

THIS DRAWING IS AN INSTRUMENT OF SERVICE AND THE PROPERTY OF TOMECAK DESIGN, P.C. AND SHALL REMAIN THEIR PROPERTY. THE USE OF THIS DRAWING SHALL BE RESTRICTED TO THE ORIGINAL SITE FOR WHICH IT WAS PREPARED AND PUBLICATION THEREOF IS EXPRESSLY LIMITED TO SUCH USE. REUSE, REPRODUCTION OR PUBLICATION BY ANY METHOD OR PART IS PROHIBITED WITHOUT THEIR WRITTEN CONSENT.