

BENCHMARK

FOUND BRASS CAP IN HANDHOLE AT THE INTERSECTION OF 92ND STREET AND CHOLLA STREET. CITY OF SCOTTSDALE. GPS POINT 8194. ELEV = 1388.480 (NAVD '88, CITY OF SCOTTSDALE DATUM)

FOUND BRASS CAP IN HANDHOLE AT THE INTERSECTION OF 92ND STREET AND SHEA BOULEVARD. CITY OF SCOTTSDALE. GPS POINT 8301. ELEV = 1372.195 (NAVD '88, CITY OF SCOTTSDALE DATUM)

FOUND BRASS CAP IN HANDHOLE AT THE INTERSECTION OF 84TH STREET AND SHEA BOULEVARD. CITY OF SCOTTSDALE. GPS POINT 3251. ELEV = 1364.811 (NAVD '88, CITY OF SCOTTSDALE DATUM)

LEGAL DESCRIPTION

THE LAND REFERRED TO HEREIN BELOW IS SITUATED IN THE COUNTY OF MARICOPA, STATE OF ARIZONA AND IS DESCRIBED AS FOLLOWS:
LOT 1, A PROPERTY ASSEMBLAGE IN THE CITY OF SCOTTSDALE, ARIZONA ARMENIAN APOSTOLIC CHURCH OF ARIZONA, ACCORDING TO BOOK 971 OF MAPS, PAGE 46, AND THEREAFTER AFFIDAVIT OF CORRECTION IN RECORDING NO. 2008-0228799, RECORDS OF MARICOPA COUNTY, ARIZONA.

BASIS OF BEARING

THE MONUMENT LINE OF 92ND STREET. SAID LINE BEARS SOUTH 00 DEGREES 01 MINUTES 20 SECONDS EAST.

FLOOD ZONE

ACCORDING TO THE FLOOD INSURANCE RATE MAP #04013C1760L, DATED OCTOBER 18, 2013, THIS PROPERTY IS LOCATED IN FLOOD ZONE "X".

ARCHITECT

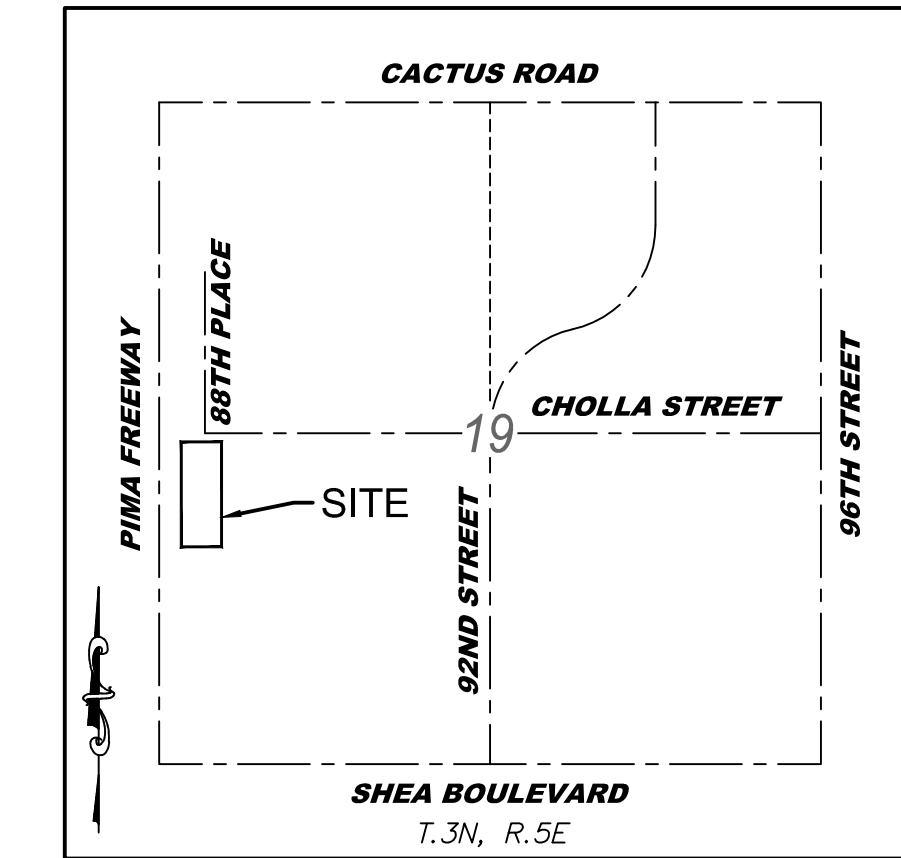
AAKAI ARCHITECTURE AND INTERIORS
7585 E. REDFIELD RD., STE 106
SCOTTSDALE, AZ 85260
PH: (480) 588-5852
CONTACT:

ENGINEER

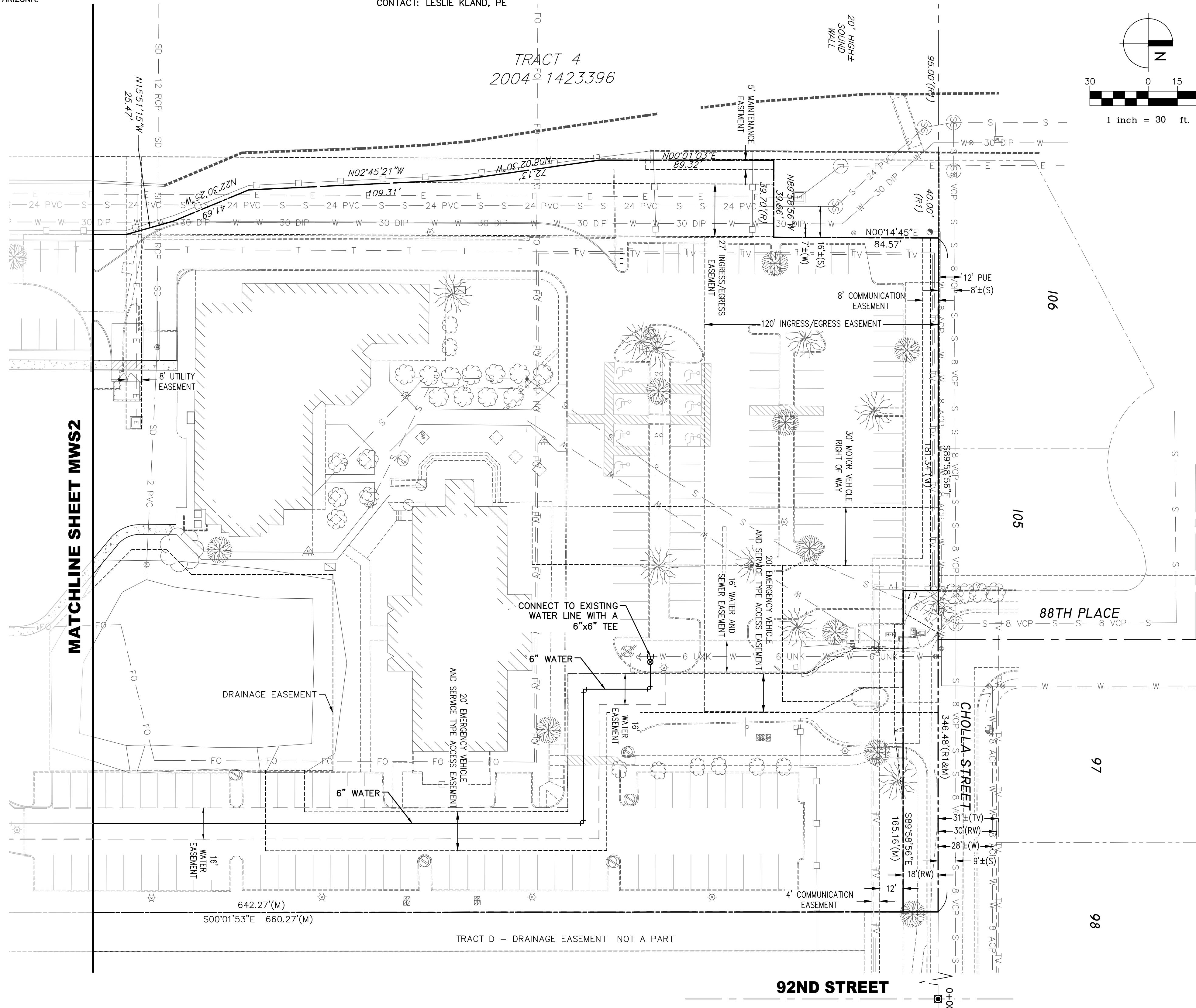
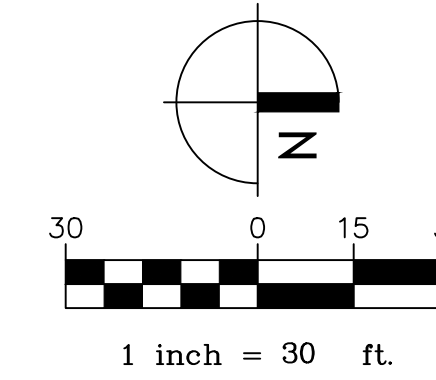
KLAND CIVIL ENGINEERS
7227 N. 16TH ST., STE 217
PHOENIX, AZ 85020
PH: (480) 344-0480
CONTACT: LESLIE KLAND, PE

MASTER WATER AND SEWER PLAN
MEGERDICHIAN SENIOR CENTER

8849 EAST CHOLLA STREET, SCOTTSDALE, ARIZONA 85260
A PORTION OF LOT 3 IN THE SOUTHWEST QUARTER OF SECTION 19, TOWNSHIP 3 NORTH, RANGE 5 EAST, OF THE GILA AND SALT RIVER BASE AND MERIDIAN, MARICOPA COUNTY, ARIZONA.



VICINITY MAP
N.T.S.



EXISTING	DESCRIPTION	PROPOSED
●	SURVEY MARKER	○
—	CURB AND GUTTER	—
—	SIDEWALK	—
—	SINGLE CURB	—
—	WATER FITTINGS	⊗
—	WATER METER	⊕
—	WATER LINE	—
—	FIRE HYDRANT	⊙
—	SEWER LINE	—
—	SEWER MANHOLE/CLEANOUT	⊙
—	STORM DRAIN	—
—	CATCH BASIN	—
—	UNDERGROUND STORAGE TANK	—
—	DRY WELL	—
—	FINISHED FLOOR	—
—	GAS LINE/METER/VALVE	—
—	ELECTRIC LINE/METER	—
—	CABLE/JUNCTION BOX	—
—	COMMUNICATION LINE	—
—	OVERHEAD ELECTRIC/POLE	—
—	VEGETATION	—
—	BOUNDARY LINE	—
—	CENTER LINE	—
—	EASEMENT	—

MEGERDICHIAN SENIOR CENTER
8849 E. CHOLLA ST.
SCOTTSDALE, AZ 85260

PRE-CONSTRUCTION PHASE	
NO.	ISSUED FOR: DATE
CONSTRUCTION PHASE	
REV.	BULLETIN # DATE



KLAND CIVIL ENGINEERS
CIVIL ENGINEERING
LAND DEVELOPMENT
SERVICES
LAND SURVEYING
7227 N. 16th St., Suite 217
Phoenix, Arizona 85020
PHONE: (480) 344-0480
www.klandeng.com

SHEET TITLE
MASTER WATER AND SEWER PLAN

DATE: 08/24/2018
JOB NUMBER: 1727-00
KLAND PROJECT NUMBER: K15153



MWS1 OF 2

