

92ND STREET

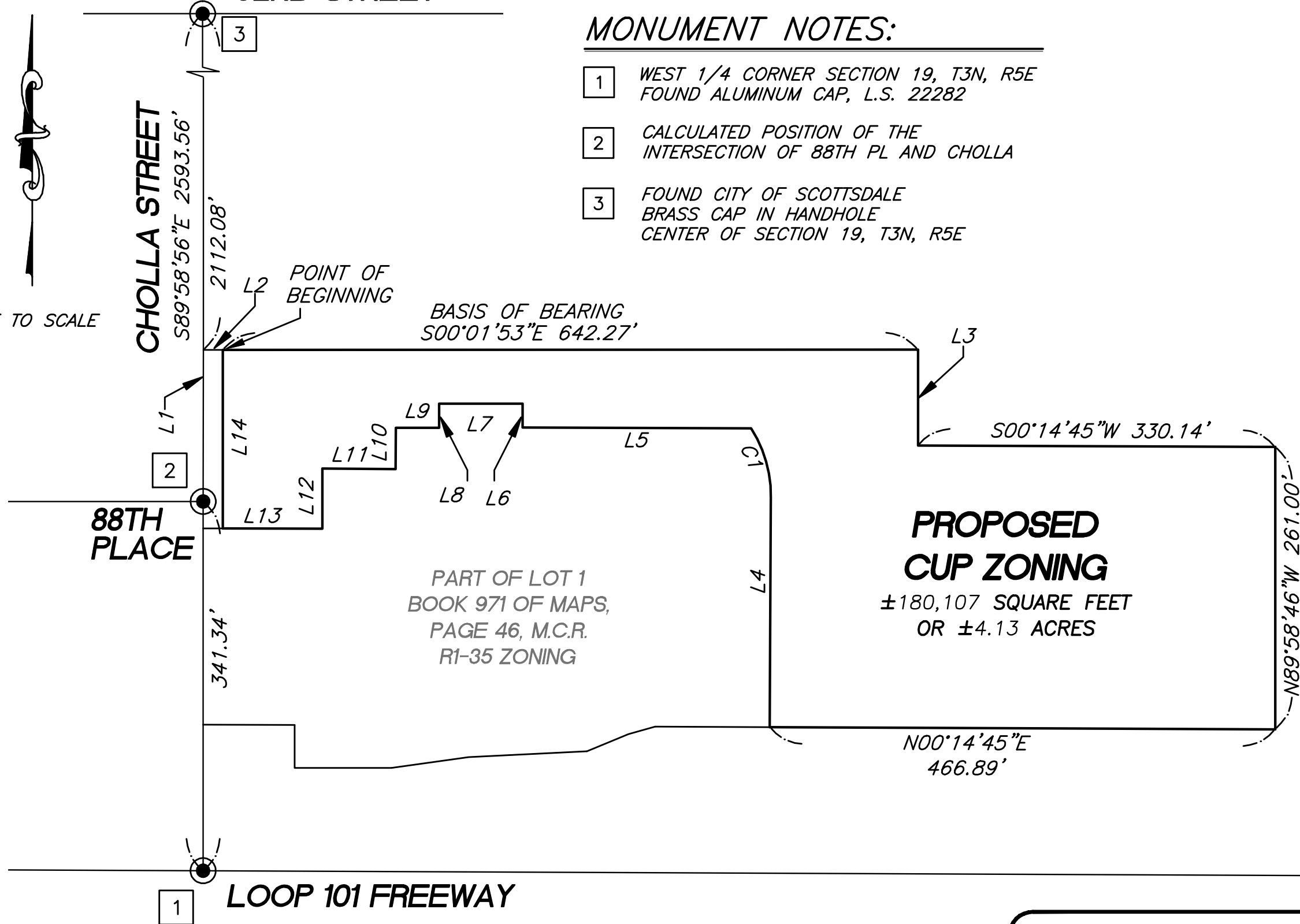
**MONUMENT NOTES:**

- 1 WEST 1/4 CORNER SECTION 19, T3N, R5E  
FOUND ALUMINUM CAP, L.S. 22282
- 2 CALCULATED POSITION OF THE  
INTERSECTION OF 88TH PL AND CHOLLA
- 3 FOUND CITY OF SCOTTSDALE  
BRASS CAP IN HANDHOLE  
CENTER OF SECTION 19, T3N, R5E

LINE TABLE		
LINE	LENGTH	BEARING
L1	140.14'	S89°58'56"E
L2	18.00'	S00°01'53"E
L3	88.67'	N89°58'49"W
L4	212.22'	S89°45'15"E
L5	211.13'	N00°14'45"E
L6	21.82'	N89°57'59"E
L7	76.96'	N00°00'54"W
L8	22.22'	S89°59'06"W
L9	40.07'	N00°14'45"E
L10	38.18'	N89°45'15"W
L11	67.58'	N00°14'45"E
L12	55.38'	N89°45'15"W
L13	91.97'	N00°01'04"E
L14	165.16'	S89°58'56"E

CURVE TABLE			
CURVE	LENGTH	RADIUS	DELTA
C1	67.49'	113.52'	34°03'44"
CURVE	CHORD	BEARING/LENGTH	
C1		N74°04'45"E/66.50'	

NOT TO SCALE



**PROPOSED  
CUP ZONING**  
±180,107 SQUARE FEET  
OR ±4.13 ACRES

PART OF LOT 1  
BOOK 971 OF MAPS,  
PAGE 46, M.C.R.  
R1-35 ZONING



**EXHIBIT**

SHEET 2 OF 2

JOB NO : P18-096

DATE : 10/02/20



**Arizona Surveying and Mapping**

2440 W. MISSION LANE, SUITE 4, PHOENIX, AZ 85021  
TEL (602) 246-9919 FAX (602) 246-9944 info@asami.com