

LEGAL DESCRIPTION

THAT PART OF LOT 1, A PROPERTY ASSEMBLAGE IN THE CITY OF SCOTTSDALE, ARIZONA ARMENIAN APOSTOLIC CHURCH OF ARIZONA, ACCORDING TO BOOK 971 OF MAPS, PAGE 46, AND THEREAFTER AFFIDAVIT OF CORRECTION IN RECORDING NO. 2008-0228799, RECORDS OF MARICOPA COUNTY, ARIZONA MORE PARTICULARLY DESCRIBED AS FOLLOWS:

COMMENCING AT THE NORTHEAST CORNER OF SAID LOT 1;

NORTH 89 DEGREES 58 MINUTES 56 SECONDS WEST, A DISTANCE OF 165.16 FEET TO THE TRUE POINT OF BEGINNING;

THENCE SOUTH 00 DEGREES 01 MINUTES 04 SECONDS WEST, A DISTANCE OF 91.97 FEET;

THENCE SOUTH 89 DEGREES 45 MINUTES 15 SECONDS EAST, A DISTANCE OF 55.38 FEET;

THENCE SOUTH 00 DEGREES 14 MINUTES 45 SECONDS WEST, A DISTANCE OF 67.58 FEET;

THENCE SOUTH 89 DEGREES 45 MINUTES 15 SECONDS EAST, A DISTANCE OF 38.18 FEET;

THENCE SOUTH 00 DEGREES 14 MINUTES 45 SECONDS WEST, A DISTANCE OF 40.07 FEET;

THENCE NORTH 89 DEGREES 59 MINUTES 06 SECONDS EAST, A DISTANCE OF 22.22 FEET;

THENCE SOUTH 00 DEGREES 00 MINUTES 54 SECONDS EAST, A DISTANCE OF 76.96 FEET;

THENCE SOUTH 89 DEGREES 57 MINUTES 59 SECONDS WEST, A DISTANCE OF 21.82 FEET;

THENCE SOUTH 00 DEGREES 14 MINUTES 45 SECONDS WEST, A DISTANCE OF 117.25 FEET;

THENCE NORTH 89 DEGREES 44 MINUTES 17 SECONDS WEST, A DISTANCE OF 277.96 FEET;

THENCE NORTH 15 DEGREES 51 MINUTES 15 SECONDS WEST, A DISTANCE OF 18.74 FEET;

THENCE NORTH 22 DEGREES 30 MINUTES 25 SECONDS WEST, A DISTANCE OF 41.69 FEET;

THENCE NORTH 02 DEGREES 45 MINUTES 21 SECONDS WEST, A DISTANCE OF 109.31 FEET;

THENCE NORTH 08 DEGREES 02 MINUTES 30 SECONDS WEST, A DISTANCE OF 72.13 FEET;

THENCE NORTH 00 DEGREES 01 MINUTES 03 SECONDS EAST, A DISTANCE OF 89.32 FEET;

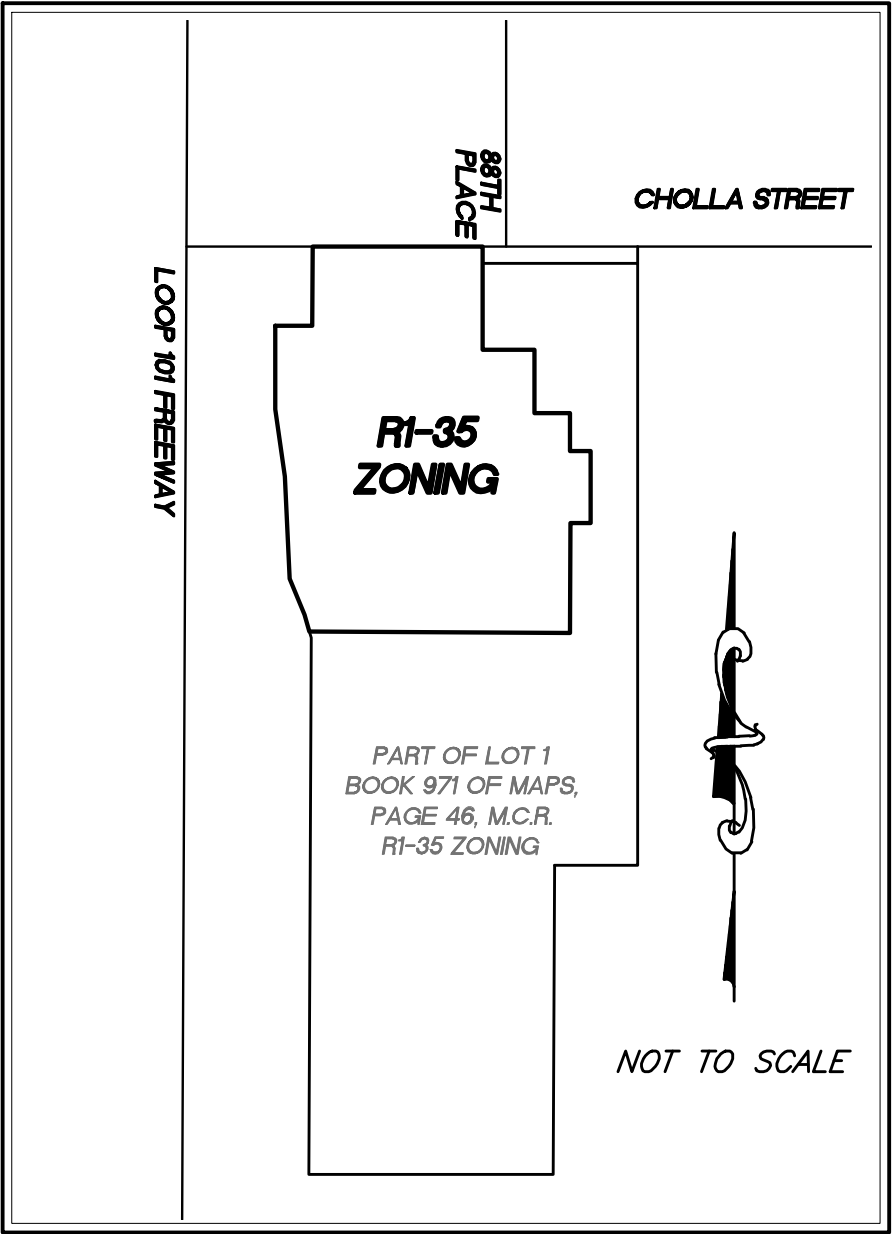
THENCE SOUTH 89 DEGREES 58 MINUTES 56 SECONDS EAST, A DISTANCE OF 39.66 FEET;

THENCE NORTH 00 DEGREES 14 MINUTES 45 SECONDS EAST, A DISTANCE OF 84.57 FEET TO THE NORTH LINE OF THE SOUTHWEST QUARTER OF SECTION 19, T3N, R5E;

THENCE SOUTH 89 DEGREES 58 MINUTES 56 SECONDS EAST ALONG SAID NORTH LINE, A DISTANCE OF 181.34 FEET;

THENCE SOUTH 00 DEGREES 01 MINUTES 04 SECONDS WEST, A DISTANCE OF 18.00 FEET TO THE TRUE POINT OF BEGINNING.

CONTAINING 111,705 SQUARE FEET OR 2.56 ACRES MORE OR LESS.



SITE MAP

SEE SHEET 2



LEGAL DESCRIPTION

SHEET 1 OF 2

JOB NO : P18-096

DATE : 10/02/20



Arizona Surveying and Mapping

2440 W. MISSION LANE, SUITE 4, PHOENIX, AZ. 85021
TEL (602) 246-9919 FAX (602) 246-9944 info@asam1.com