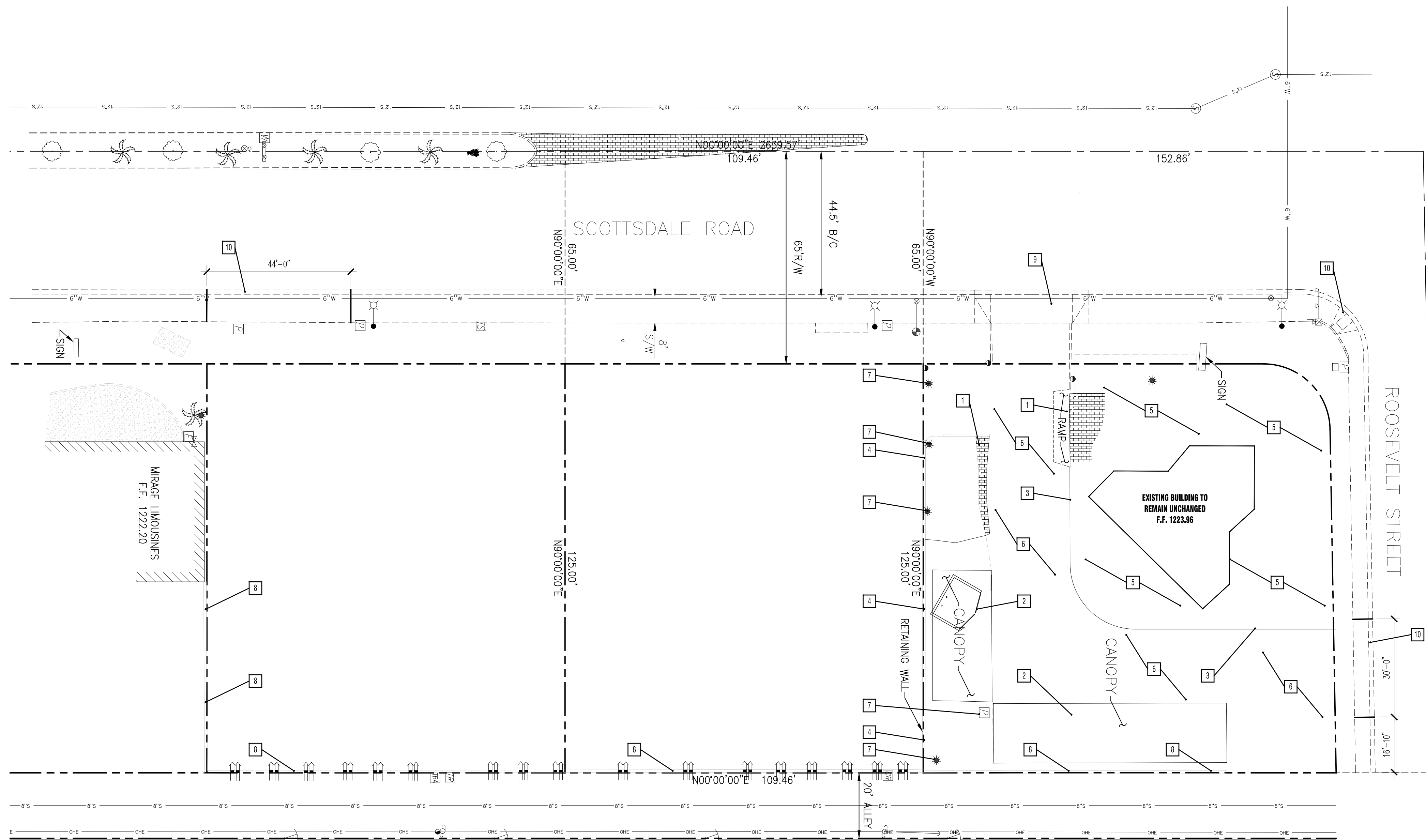


X DEMO KEYNOTES

1. DEMO PAVERS AND RAMP
2. DEMO CANOPY
3. DEMO EXISTING CURB
4. DEMO RETAINING WALL
5. DEMO MISCELLANEOUS HARDSCAPING (CONCRETE / PAVERS) THIS AREA
6. DEMO EXISTING ASPHALT PAVING
7. DEMO POWER / LIGHT POLES
8. EXISTING PROPERTY WALL TO REMAIN
9. DEMO DRIVEWAY PER CITY OF SCOTTSDALE REQUEST
10. DEMO EXISTING CURB AND SIDEWALK FOR NEW DRIVE



TRUCK MAX

911/925 NORTH SCOTTSDALE ROAD
SCOTTSDALE, ARIZONA 85257

AS1.00
DEMO SITE PLAN

PROJECT NO. 20-54-100

REVISIONS:

NO.	DESCRIPTION



EXPIRES: 09-30-24

01 DEMO SITE PLAN
SCALE: 1" = 20'-0"



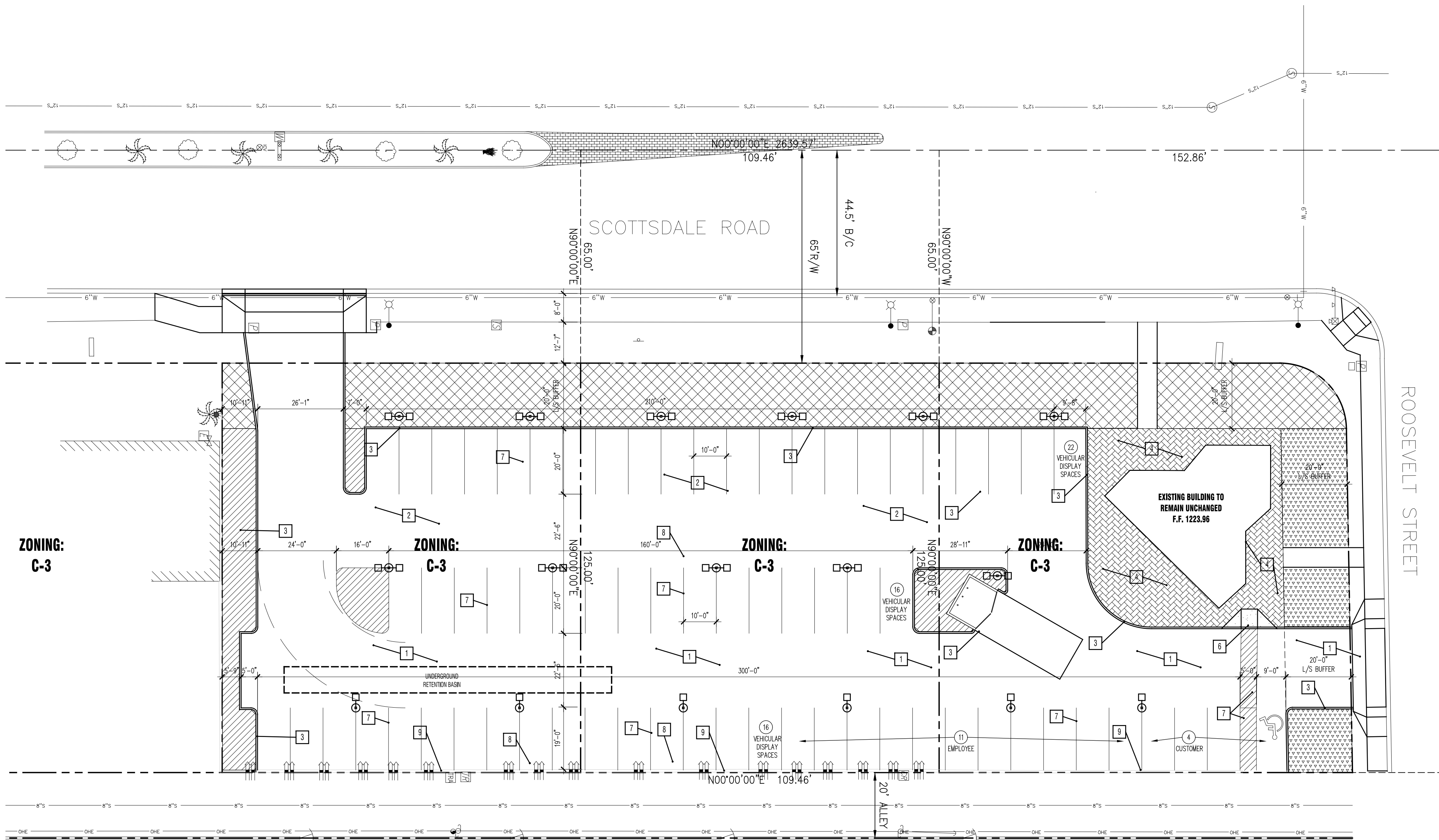
2935 W 16th Ave
Phoenix, Arizona 85015

ZONING:
CSS

ZONING:
CSS

ZONING:
CSS

ZONING:
CSS



ZONING:
C-3

ZONING:
C-3

ZONING:
C-3

ZONING:
C-3

ZONING:
C-3

ZONING:
R1-7

ZONING:
R1-7

ZONING:
R1-7

ZONING:
R1-7

ZONING:
R1-7

ZONING:
R1-7

ZONING:
R1-7

01 SITE PLAN
SCALE: 1" = 20'-0"

PROJECT INFORMATION

PROJECT NAME: TRUCK MAX INVENTORY LOT
 PROJECT ADDRESS: 911/925 NORTH SCOTTSDALE ROAD, SCOTTSDALE, AZ 85257
 APN: 131-47-001 / 131-47-002E / 131-47-002F
 LOT SIZE: 15,618 S.F. / 13,681 S.F. / 13,682 S.F.
 ZONING: C-3
 OCCUPANCY: AUTO DEALER
 EXISTING GROSS FLOOR AREA: 1,395 SF
 CONSTRUCTION TYPE: V-B
 STORIES: 1
 BUILDING HEIGHT: 12'
 PARKING CALCULATIONS:
 1,395 BUILDING S.F. / 200 = 7 EMPLOYEE
 60 VEHICULAR DISPLAY / 20 = 3 EMPLOYEE
 60 VEHICULAR DISPLAY / 20 = 3 CUSTOMER
 TOTAL PARKING REQUIRED: 13 SPACES
 TOTAL PARKING PROVIDED: 15 SPACES

PROJECT DESCRIPTION

TRUCKMAX, A TRUCK SALES DEALERSHIP IS REQUESTING A "CONDITIONAL USE PERMIT" FOR THE PURPOSE OF EXPANDING THEIR VEHICULAR DISPLAY AREA. TRUCKMAX IS LOCATED AT 925 N. SCOTTSDALE ROAD WHICH IS THE SOUTHEAST CORNER OF NORTH SCOTTSDALE ROAD AND EAST ROOSEVELT STREET. THE CURRENT USE IS VEHICULAR DISPLAY AND SALES ONLY. THE TRUCKMAX PROJECT PROPOSES TO EXPAND THEIR CURRENT VEHICULAR DISPLAY TO THE TWO C-3 ZONED PARCELS ADJACENT TO THEIR SOUTH PROPERTY LINE - PARCELS 131-47-002E AND 131-47-002F. THE TWO PARCELS WHICH ARE EACH APPROXIMATELY 13,682 SQUARE FEET IN SIZE, WILL BE DEVELOPED AS A CONTIGUOUS VEHICULAR DISPLAY LOT ONLY, ADJOINING THE CURRENT TRUCKMAX SALES SITE. THE EXPANSION PROJECT WILL INCLUDE PAVED VEHICULAR DISPLAY SPACE AND CIRCULATION, LOT LIGHTING, LANDSCAPE BUFFERS, AND ON-SITE RETENTION. THE PROJECT WILL BE IN COMPLIANT WITH THE APPROPRIATE CITY OF SCOTTSDALE ZONING REGULATIONS AND WILL INCLUDE BOTH THE EXPANSION PARCELS AND THE CURRENT TRUCKMAX SALES SITE.

OPEN SPACE CALCULATIONS

ZONING: C-3
 NET LOT AREA: 42,981 S.F.
 EXISTING BUILDING HEIGHT: 12'

REQUIRED OPEN SPACE:
 MAXIMUM BUILDING HEIGHT = 12' EXISTING (36' ALLOWED)
 FIRST 12' OF HEIGHT = 10% X NET LOT AREA
 = 10 X 42,981 = 4,298 S.F.

OPEN SPACE PROVIDED: 7,355 S.F.

FRONT OPEN SPACE REQUIRED:
 50% OF REQUIRED OPEN SPACE
 5 X 5,349 S.F. = 2,674 S.F.

FRONT OPEN SPACE PROVIDED: 5,890 S.F.

PARKING LOT LANDSCAPING REQUIRED:
 PARKING LOT AREA X 15%
 6,156 X .15 = 923 S.F.

PARKING LOT LANDSCAPING PROVIDED: 1,360 S.F.

CODE INFORMATION

JURISDICTION:
 CITY OF SCOTTSDALE
 PLANNING AND DEVELOPMENT SERVICES 7447 E. INDIAN SCHOOL RD., SCOTTSDALE, ARIZONA 85251
 480.312.7800
 APPLICABLE CODES:
 2015 CITY AMENDMENTS
 2015 INTERNATIONAL FIRE CODE - ORD. 4283
 2015 INTERNATIONAL BUILDING CODE - ORD. 4284
 2015 INTERNATIONAL RESIDENTIAL CODE
 2015 INTERNATIONAL MECHANICAL CODE
 2015 INTERNATIONAL PLUMBING CODE
 2015 INTERNATIONAL FUEL GAS CODE
 2015 INTERNATIONAL ENERGY CONSERVATION CODE
 2015 INTERNATIONAL EXISTING BUILDING CODE
 2015 INTERNATIONAL GREEN CONSTRUCTION CODE
 2014 NATIONAL ELECTRIC CODE
 2010 ADA STANDARDS FOR ACCESSIBLE DESIGN

SPECIAL INSPECTIONS:

PROJECT DIRECTORY

OWNER
 TRUCK MAX
 925 NORTH SCOTTSDALE ROAD
 SCOTTSDALE, ARIZONA 85257
 CONTACT: CRAIG DIAMOND
 T: 480.307.0753
 EMAIL: craig@mytruckmax.com

CIVIL ENGINEER
 HELIX ENGINEERING
 3240 EAST UNION HILLS DRIVE
 SUITE 113
 PHOENIX, ARIZONA 85050
 CONTACT: STEVE BOWSER
 T: 602.788.2616
 EMAIL: sb@hxeng.com

LANDSCAPE ARCHITECT
 T.J. McQUEEN & ASSOCIATES
 10450 NORTH 74TH STREET
 SUITE 120
 SCOTTSDALE, ARIZONA 85258
 CONTACT: TIM McQUEEN
 T: 602.256.0320
 EMAIL: timmcqueen@tjma.com

ARCHITECT
 URBAN REBUILD INC
 2935 W. 16TH AVENUE
 PHOENIX, ARIZONA 85015
 CONTACT: RICK MCGEE
 T: 602.796.7799
 EMAIL: rick@urbanrebuild.com

ELECTRICAL ENGINEER
 MAVIN ENGINEERING
 8011 S. AVENIDA DEL YAQUI
 GUADALUPE, ARIZONA 85283
 CONTACT: KIRK HOFFMAN, P.E.
 T: 480.303.0180
 EMAIL: kirkh.maven@gmail.com

1 SITE KEYNOTES

1. NEW CIRCULATION DRIVE AND CUSTOMER PARKING /PAVING
2. NEW INVENTORY DISPLAY PARKING / PAVING
3. NEW CONCRETE CURBING
4. NEW PAVERS
5. NEW 20'-0" DIA. CONCRETE DISPLAY PAD
6. NEW ACCESSIBLE RAMP
7. NEW 4" PAINT STRIPING
8. NEW LIGHT POLE
9. EXISTING PROPERTY WALL TO REMAIN

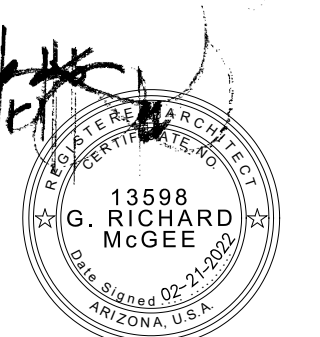
TRUCK MAX
 911/925 NORTH SCOTTSDALE ROAD
 SCOTTSDALE, ARIZONA 85257

AS1.01
 SITE PLAN
 05/21/20

PROJECT NO. 20-54-100

REVISIONS:

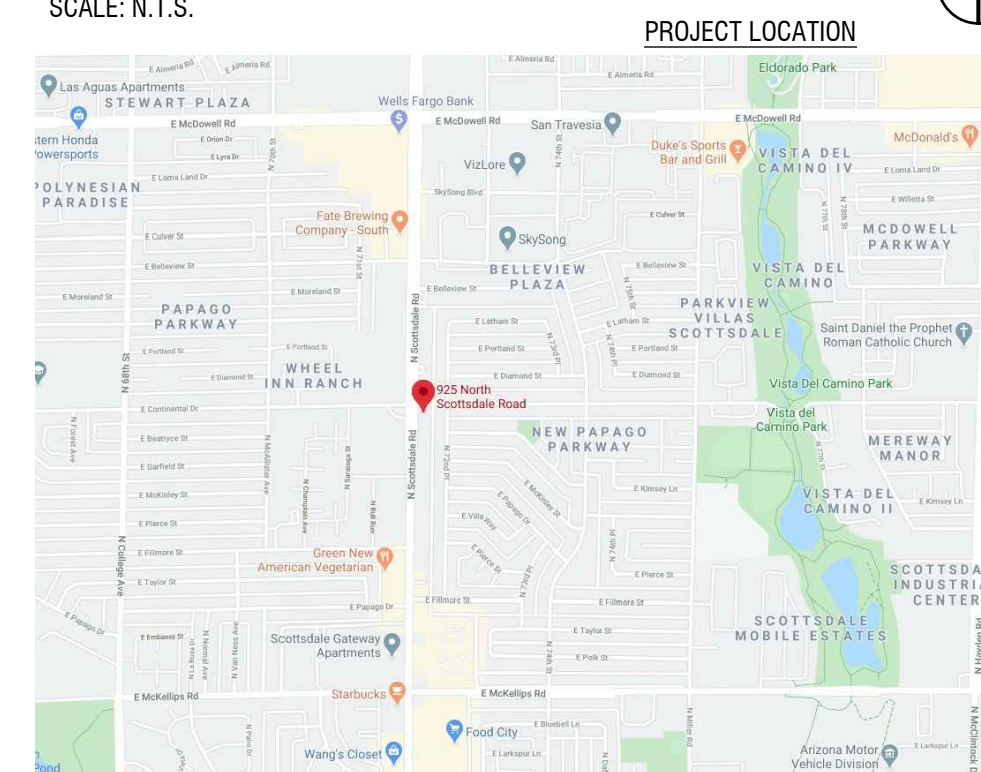
NO.	DATE	DESCRIPTION



EXPIRES: 09-30-24

VICINITY MAP

SCALE: N.T.S.



NOT USED
SCALE: N.T.S.

4

ADA RAMP SECTION
SCALE: 1-1/2" = 1'-0"

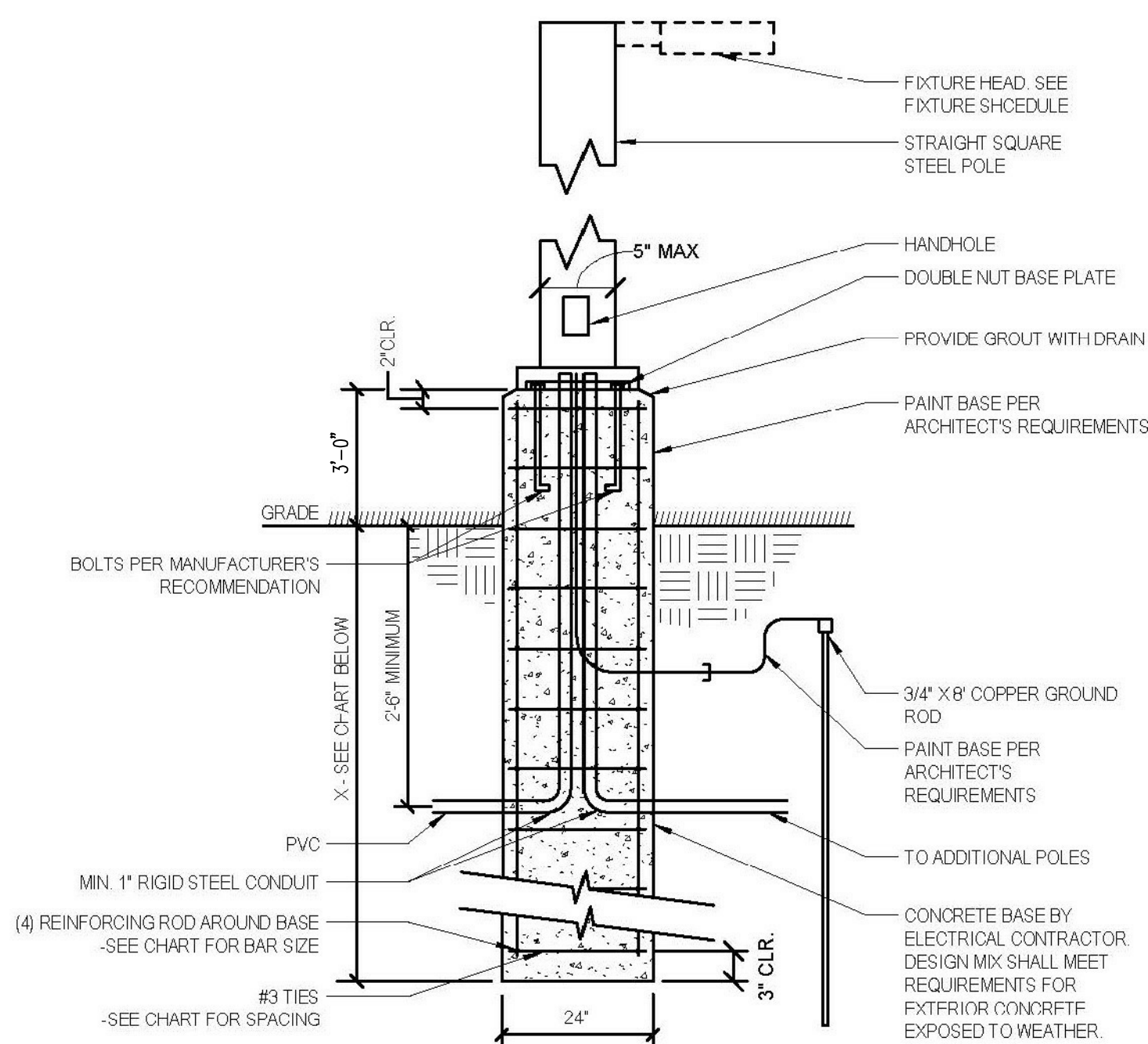
7

GATE HINGE
SCALE: 3" = 1'-0"

4

REFUSE ENCLOSURE
SCALE: 1/4" = 1'-0"

1



NOTES:
A DRILLED 2'-0" DIA. HOLE SHALL BE USED AS THE FORM FOR THE CONCRETE BASE IN UNDISTURBED EARTH, EXCLUDING FILL MATERIAL.
BACKFILL AROUND CONCRETE BASE WITH COMPACTED GRANULAR A MIN. OF 2'-0" IN ALL DIRECTIONS IN EXCAVATED AREAS OR IN EXISTING SOIL CONTAINING FILL OF OBJECTIONABLE MATERIAL.
DESIGN BASED ON IBC-2009, 100 MPH WIND SPEED EXPOSURE C, 150 PSF/FT LATERAL SOIL PRESSURE, OCCUPANCY CATEGORY II, IMPORTANCE FACTOR 1.0

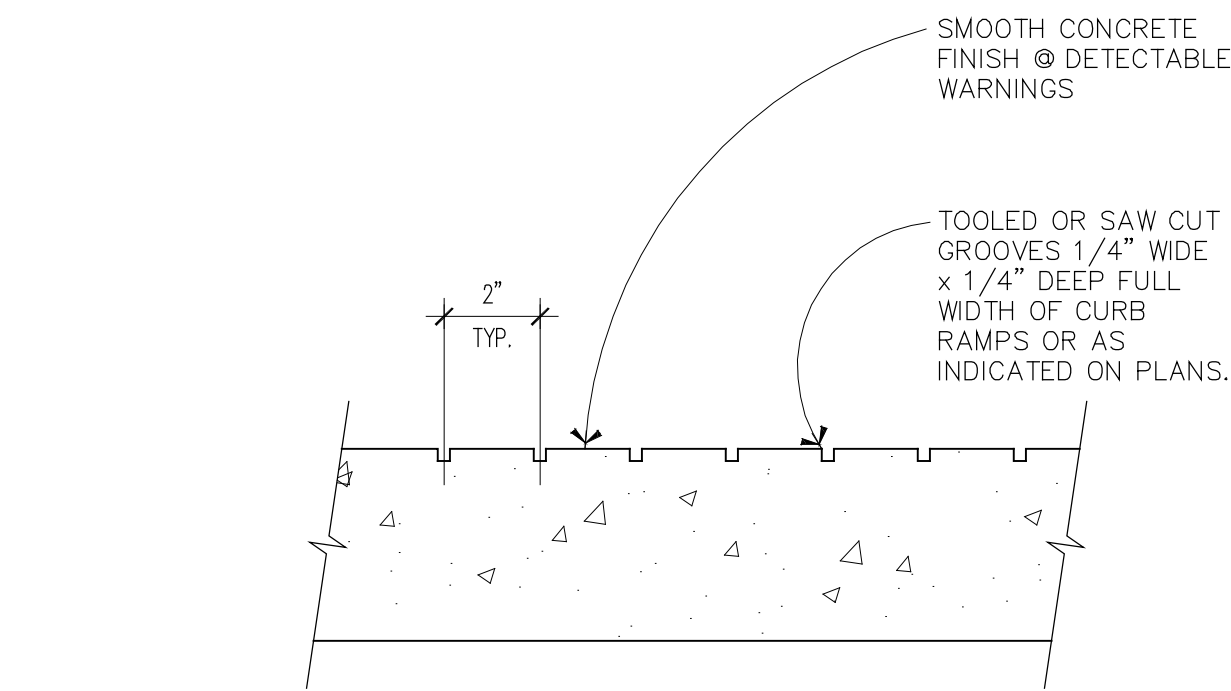
POLE HEIGHT	X	REBAR SIZE	#3 TIE SPACING
10'-0" - 20'-0"	73" (INCHES)	#5	10" (INCHES)
21'-0" - 35'-0"	103" (INCHES)	#5	10" (INCHES)
36'-0" - 45'-0"	120" (INCHES)	#6	12" (INCHES)
46'-0" - 50'-0"	130" (INCHES)	#6	12" (INCHES)

LIGHT POLE
SCALE: 1/2" = 1'-0"

12

NOT USED
SCALE: N.T.S.

9

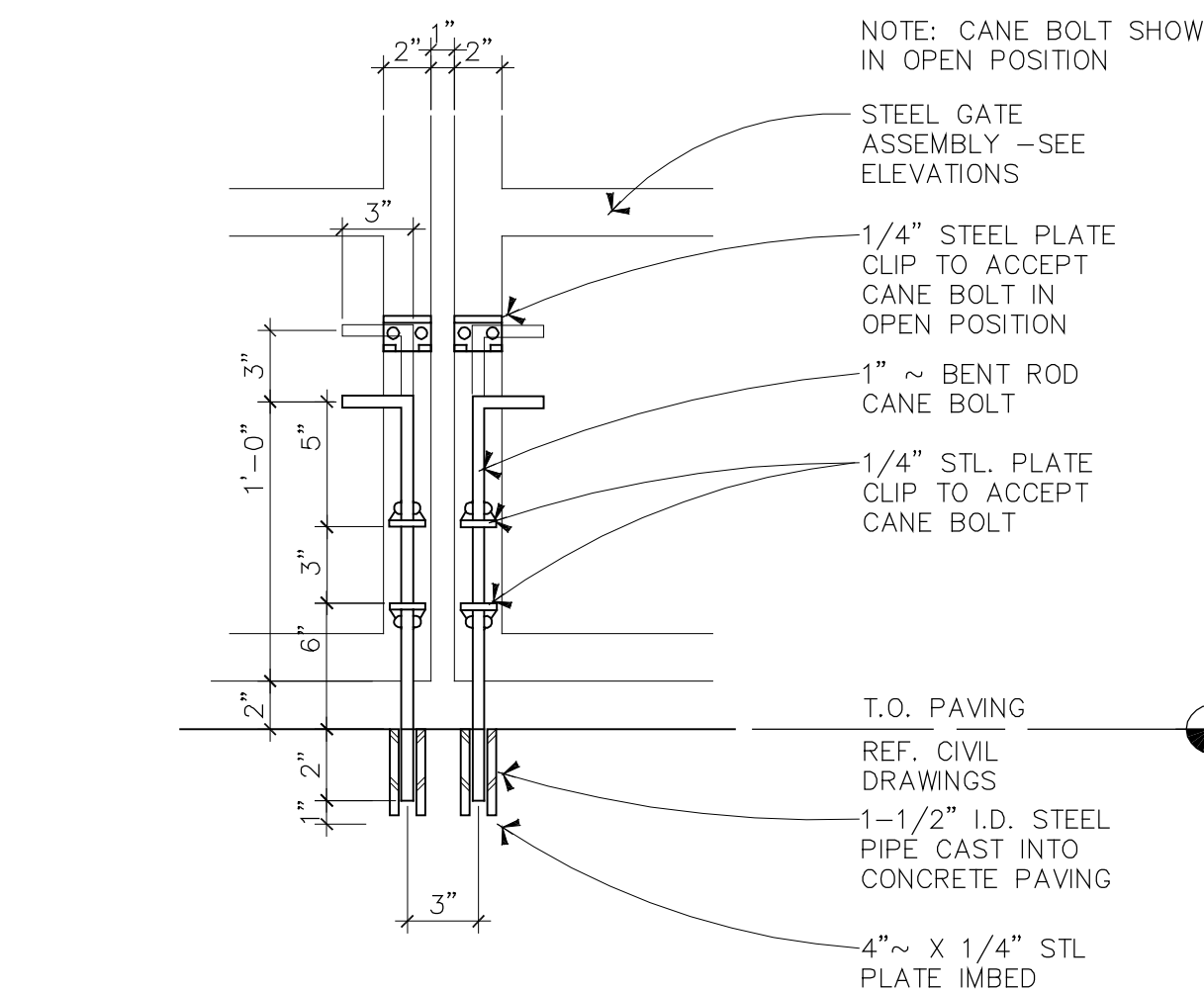


DETECTABLE WARNING
SCALE: 1-1/2" = 1'-0"

8

CANE BOLT
SCALE: 1-1/2" = 1'-0"

5

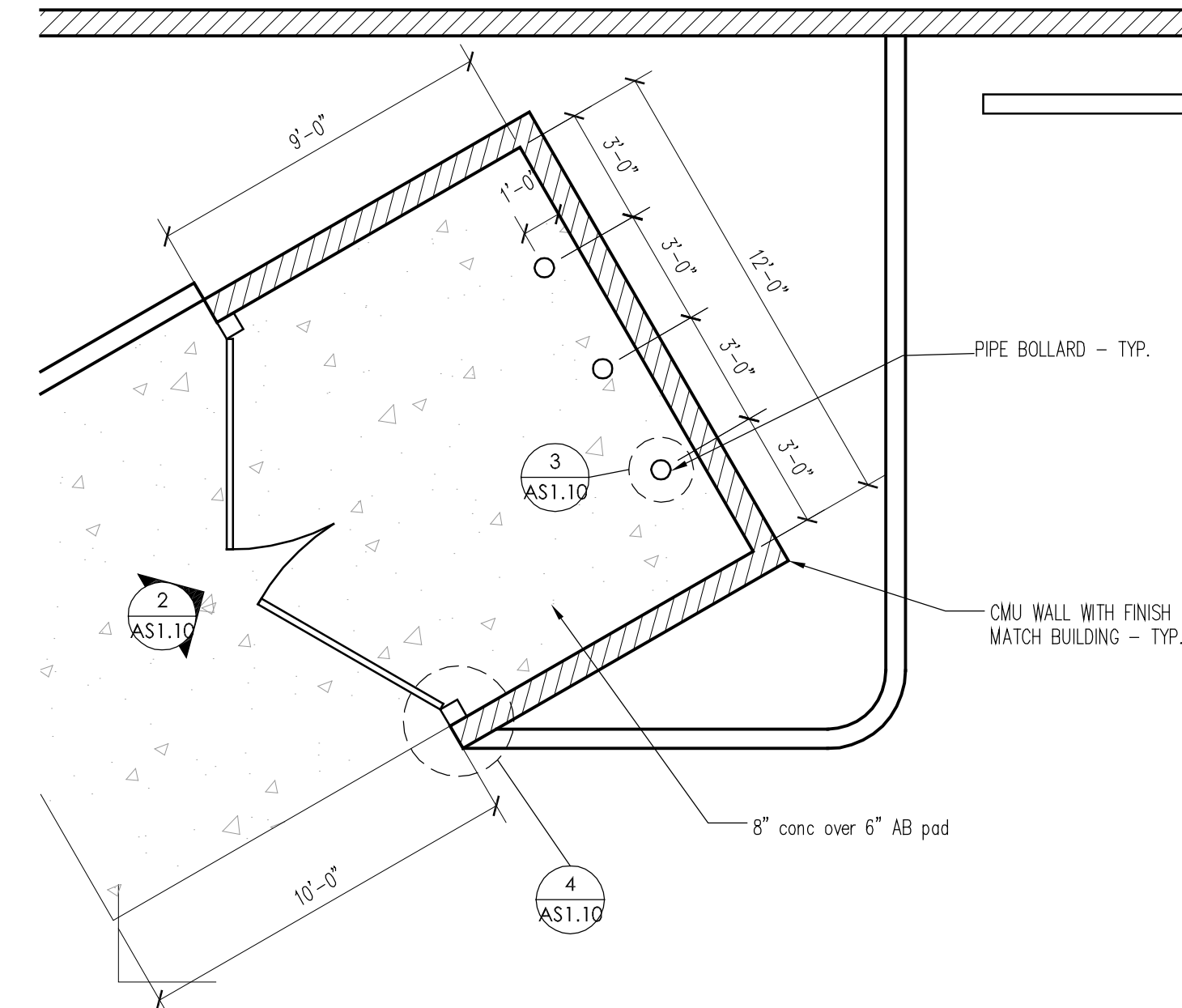
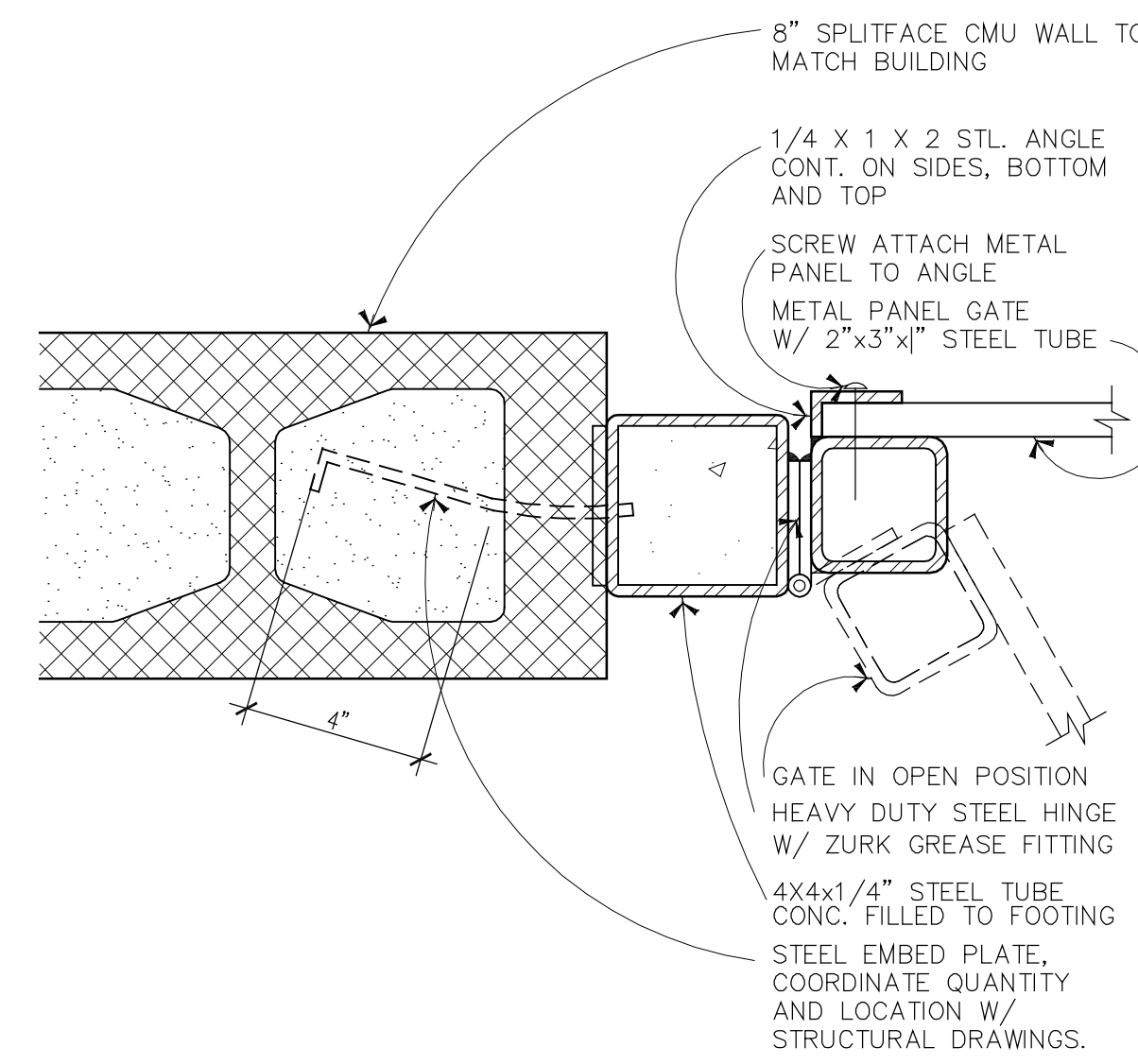
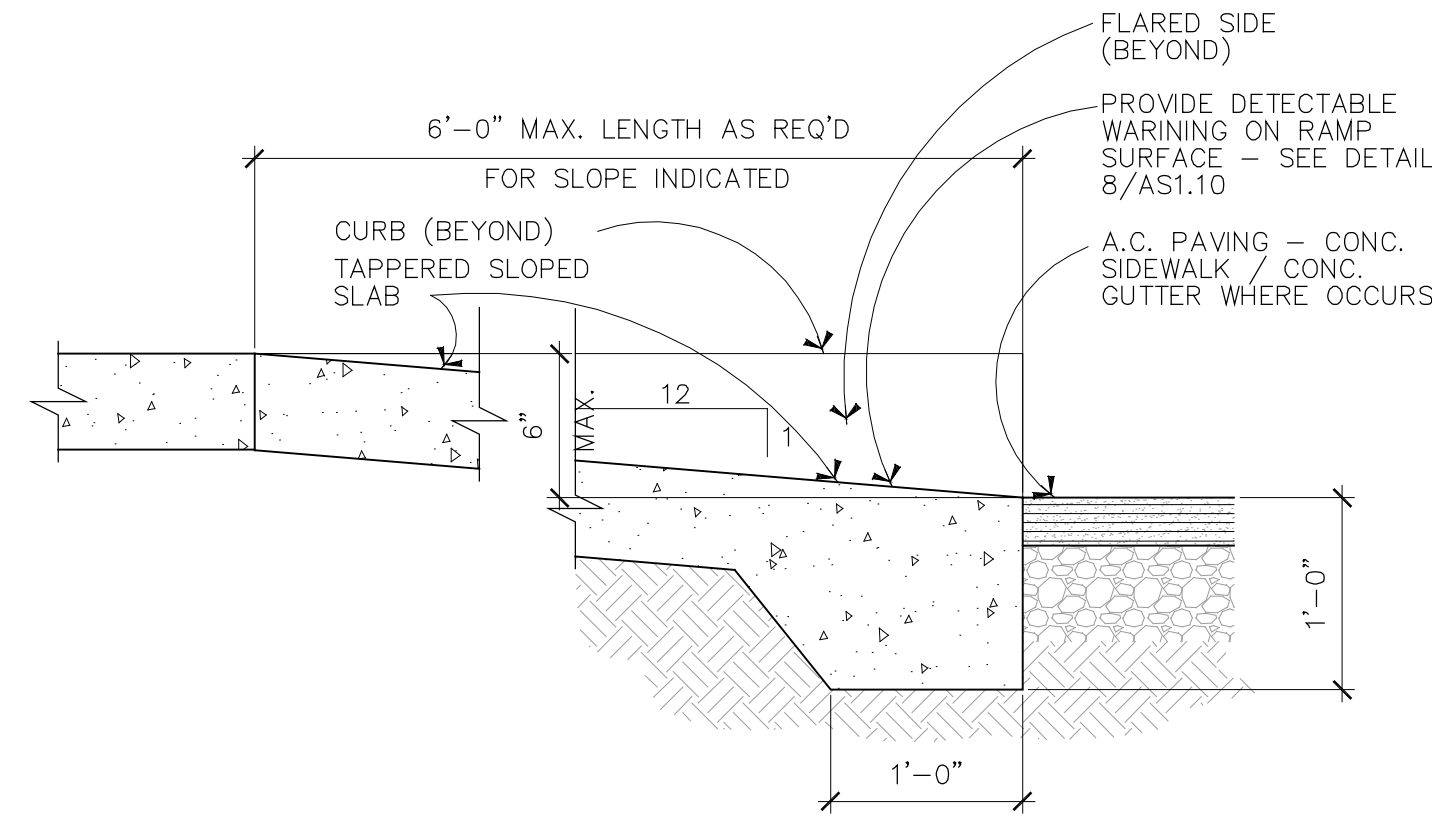


TYPICAL ADA RAMP
SCALE: 3/4" = 1'-0"

6

TYPICAL ADA RAMP
SCALE: 3/4" = 1'-0"

6

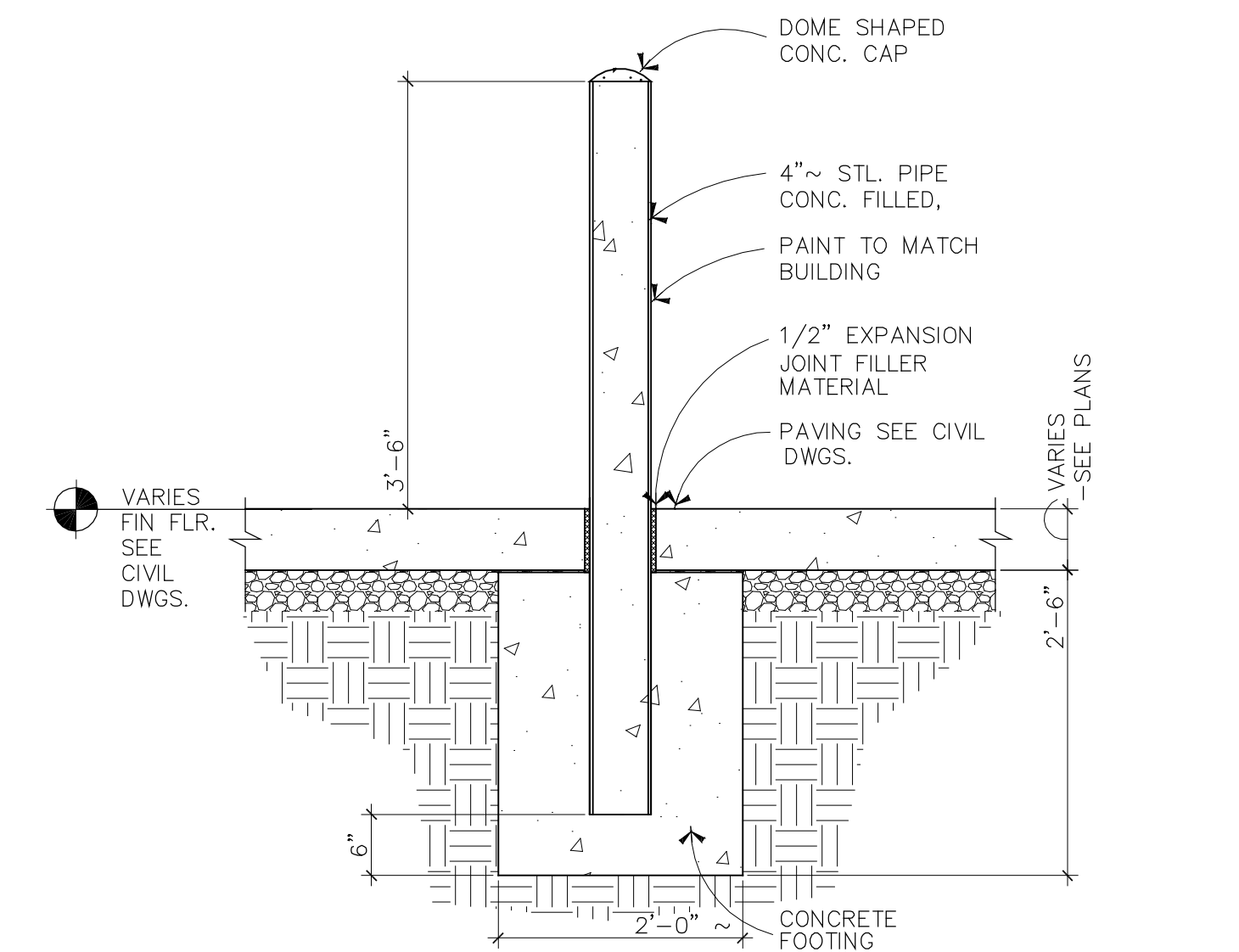


REFUSE ENCLOSURE ELEVATION
SCALE: 1/2" = 1'-0"

2

REFUSE ENCLOSURE ELEVATION
SCALE: 1/2" = 1'-0"

2



BOLLARD
SCALE: 3/4" = 1'-0"

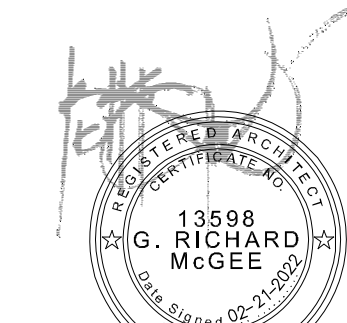
3

TRUCK MAX
911/925 NORTH SCOTTSDALE ROAD
SCOTTSDALE, ARIZONA 85257

AS1.10
SITE DETAILS

PROJECT NO. 20-54-100
REVISIONS:

NO.	DATE	DESCRIPTION



EXPIRES: 09-30-24

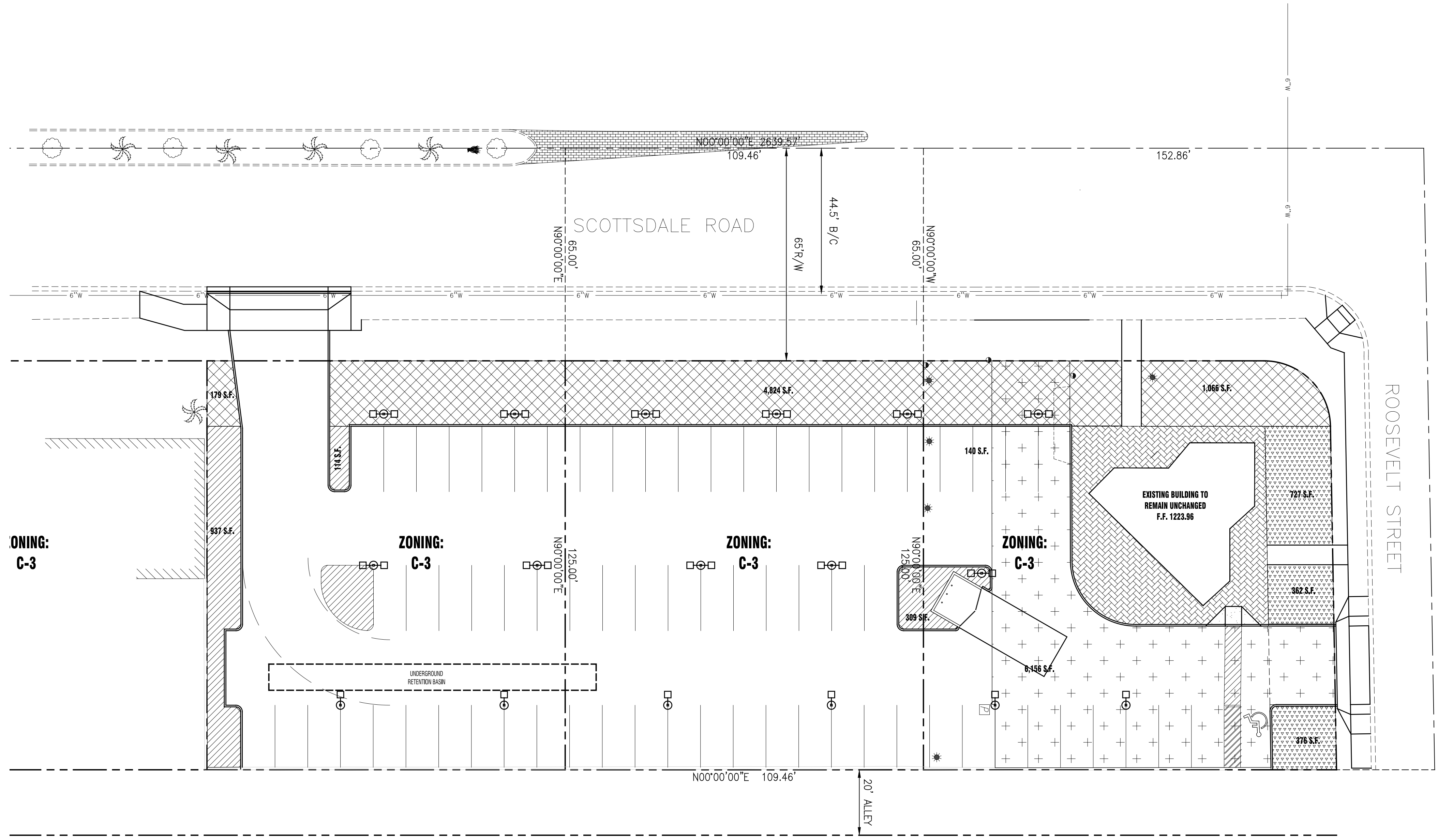


ZONING:
CSS

ZONING:
CSS

ZONING:
CSS

ZONING:
CSS



OPEN SPACE CALCULATIONS

ZONING: C-3
 NET LOT AREA: 42,981 S.F.
 EXISTING BUILDING HEIGHT: 12'

REQUIRED OPEN SPACE:
 MAXIMUM BUILDING HEIGHT = 12' EXISTING (36' ALLOWED)
 FIRST 12' OF HEIGHT = 10% X NET LOT AREA
 = .10 X 42,981 = 4,298 S.F.

OPEN SPACE PROVIDED: 7,355 S.F.

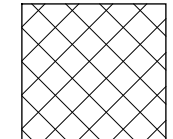
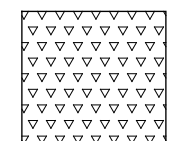
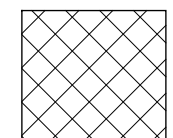
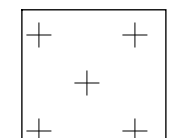
FRONT OPEN SPACE REQUIRED:
 50% OF REQUIRED OPEN SPACE
 .5 X 4,298 S.F. = 2,149 S.F.

FRONT OPEN SPACE PROVIDED: 5,890 S.F.

PARKING LOT LANDSCAPING REQUIRED:
 PARKING LOT AREA X 15%
 6,156 X .15 = 923 S.F.

PARKING LOT LANDSCAPING PROVIDED: 1,360 S.F.

ZONING:
C-3

-  FRONT OPEN SPACE
5,890 S.F.
-  OPEN SPACE OTHER THAN FRONT OPEN SPACE
1,465 S.F.
-  PARKING LOT LANDSCAPING
1,360 S.F.
-  PARKING LOT AREA
6,156 S.F.

ZONING:
C-3

ZONING:
R1-7

ZONING:
R1-7

ZONING:
R1-7

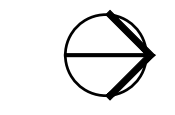
ZONING:
R1-7

ZONING:
R1-7

ZONING:
R1-7

ZONING:
R1-7

01 OPEN SPACE PLAN
SCALE: 1" = 20'-0"



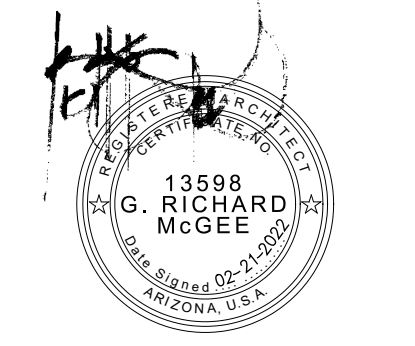
TRUCK MAX
 911/925 NORTH SCOTTSDALE ROAD
 SCOTTSDALE, ARIZONA 85257

OS1.00
 OPEN SPACE PLAN
 06/29/20

PROJECT NO. 20-54-100

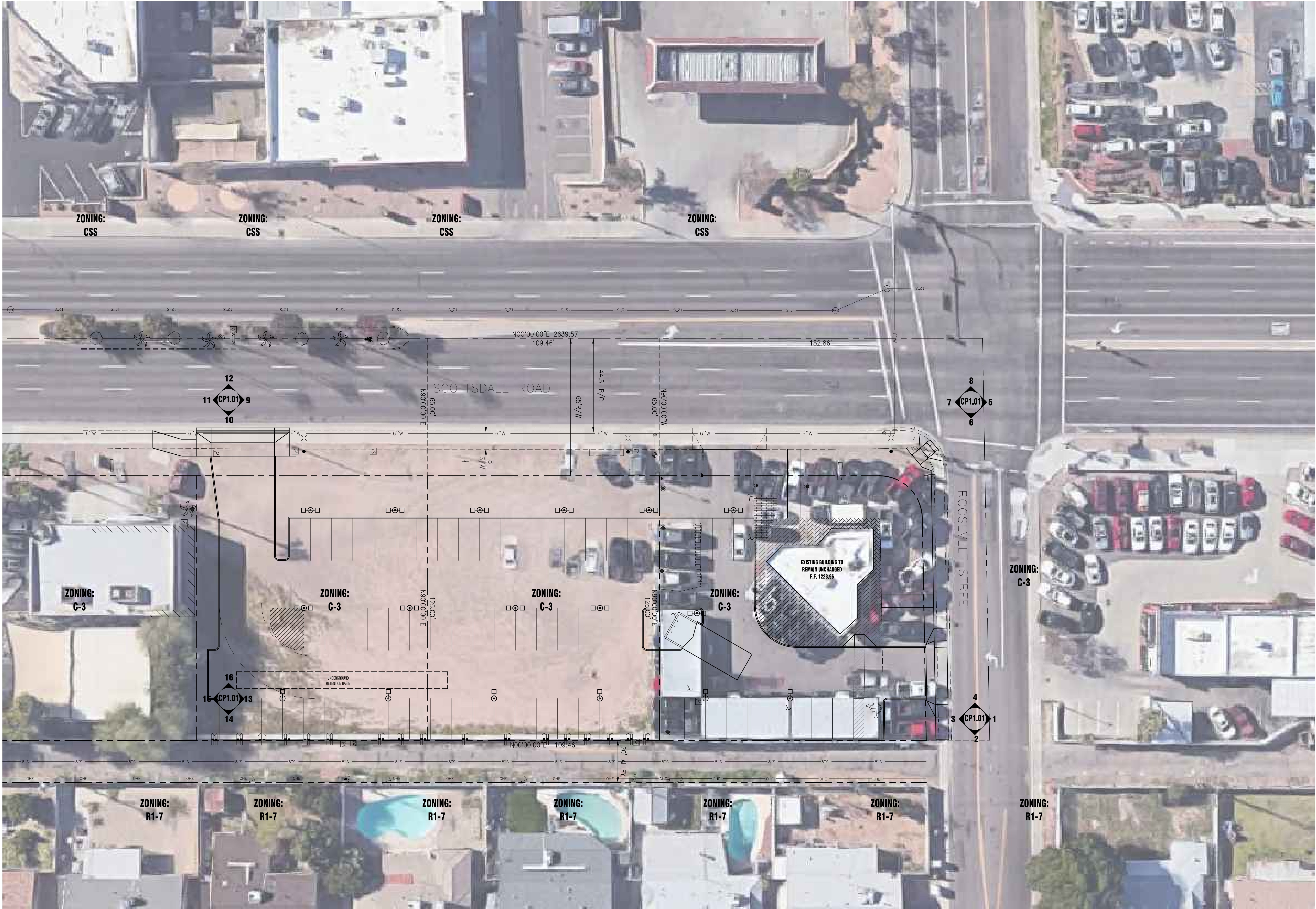
REVISIONS:

NO.	DESCRIPTION



EXPIRES: 09-30-24





TRUCK MAX
 911/925 NORTH SCOTTSDALE ROAD
 SCOTTSDALE, ARIZONA 85257

CP1.00

CONTEXTUAL SITE PLAN
 06/29/20

PROJECT NO. 20-54-100

REVISIONS:

NO.	DESCRIPTION	DATE



EXPIRES: 09-30-24



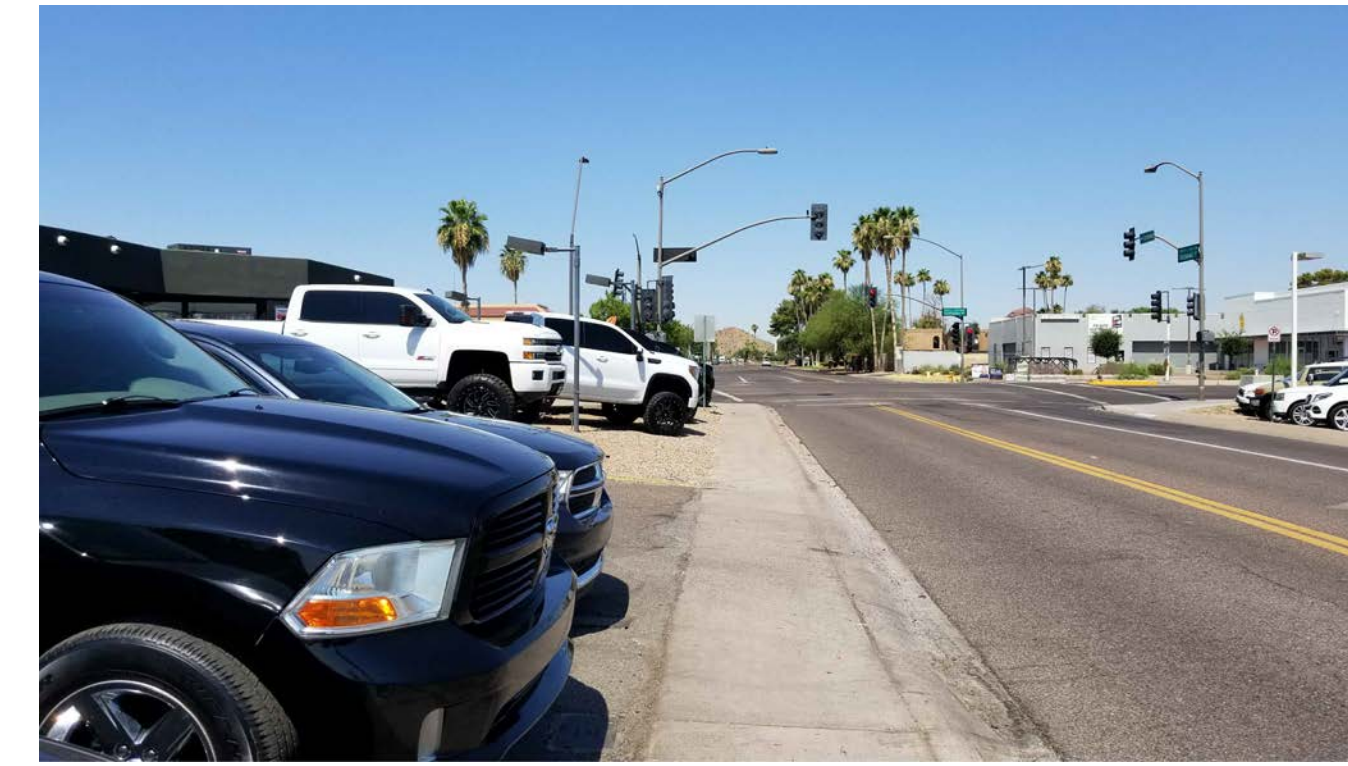
01 CONTEXTUAL SITE PLAN PHOTO



02 CONTEXTUAL SITE PLAN PHOTO



03 CONTEXTUAL SITE PLAN PHOTO



04 CONTEXTUAL SITE PLAN PHOTO



05 CONTEXTUAL SITE PLAN PHOTO



06 CONTEXTUAL SITE PLAN PHOTO



07 CONTEXTUAL SITE PLAN PHOTO



08 CONTEXTUAL SITE PLAN PHOTO



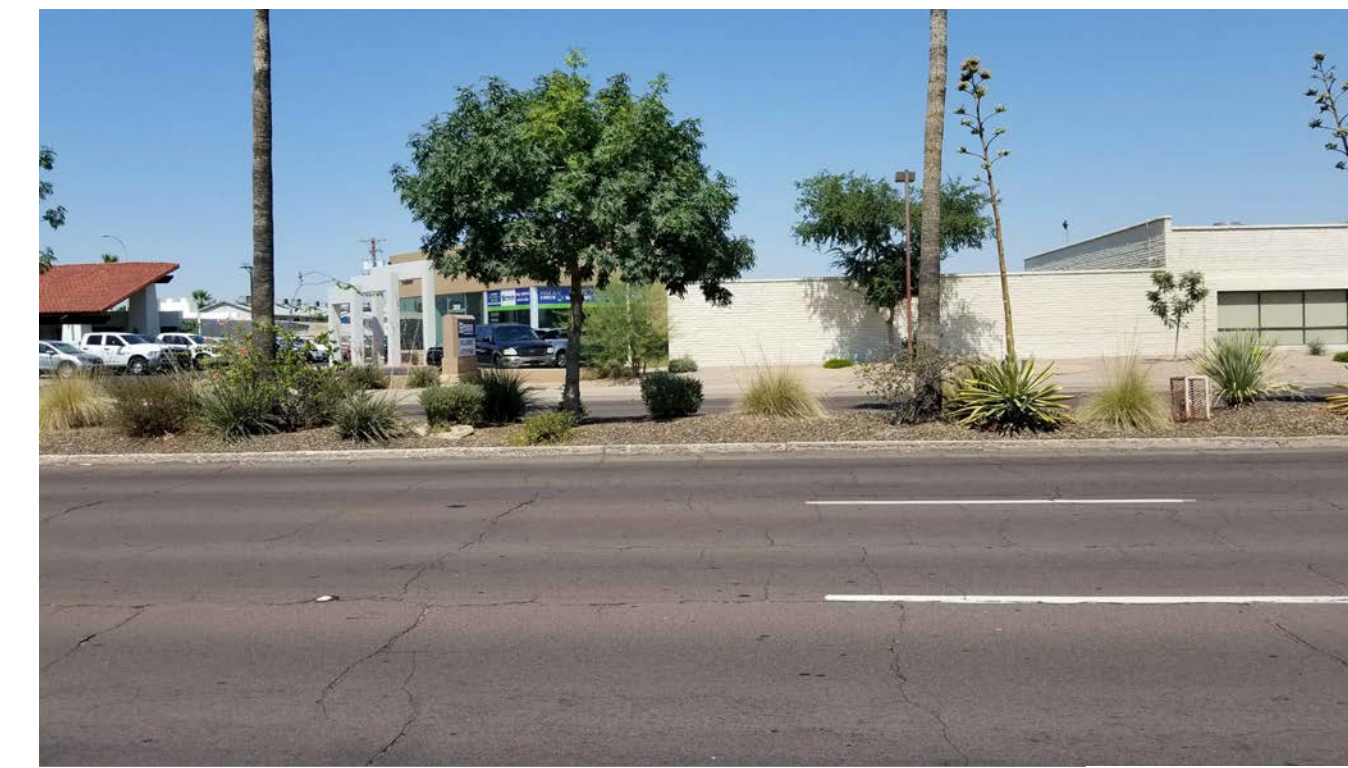
09 CONTEXTUAL SITE PLAN PHOTO



10 CONTEXTUAL SITE PLAN PHOTO



11 CONTEXTUAL SITE PLAN PHOTO



12 CONTEXTUAL SITE PLAN PHOTO



13 CONTEXTUAL SITE PLAN PHOTO



14 CONTEXTUAL SITE PLAN PHOTO



15 CONTEXTUAL SITE PLAN PHOTO



16 CONTEXTUAL SITE PLAN PHOTO

TRUCK MAX

911/925 NORTH SCOTTSDALE ROAD
SCOTTSDALE, ARIZONA 85257

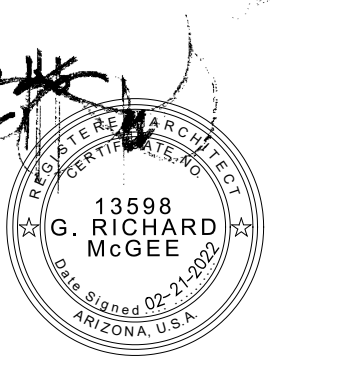
CP1.01

CONTEXTUAL SITE PLAN
06/29/20

PROJECT NO. 20-54-100

REVISIONS:

NO.	DESCRIPTION

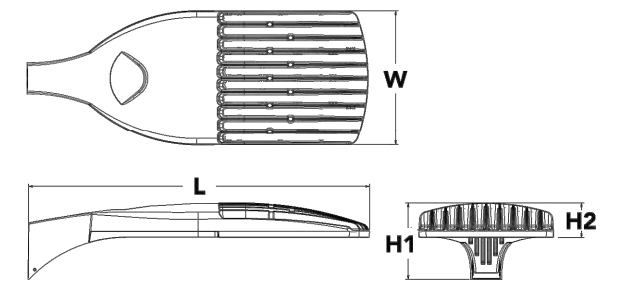




D-Series Size 1 LED Area Luminaire



Specifications
 EPA: 1.01 ft² (0.10 m²)
 Length: 33" (0.84 m)
 Width: 13" (0.33 m)
 Height H1: 7'-1/2" (2.29 m)
 Height H2: 3'-1/2" (1.07 m)
 Weight (max): 27 lbs (12.2 kg)



Crating Number	SB, SC, SD
Notes	
Type	

Introduction
 The modern styling of the D-Series is striking yet unobtrusive - making a bold, progressive statement even as it blends seamlessly with its environment. The D-Series distills the benefits of the latest in LED technology into a high performance, high efficacy, long-life luminaire. The outstanding photometric performance results in sites with excellent uniformity, greater pole spacing and lower power density. It is ideal for replacing up to 750W metal halide in pedestrian and area lighting applications with typical energy savings of 65% and expected service life of over 100,000 hours.

Ordering Information EXAMPLE: DSX1 LED P7 40K T3M MVOLT SPA NLTAR2 PIRHN DBXID

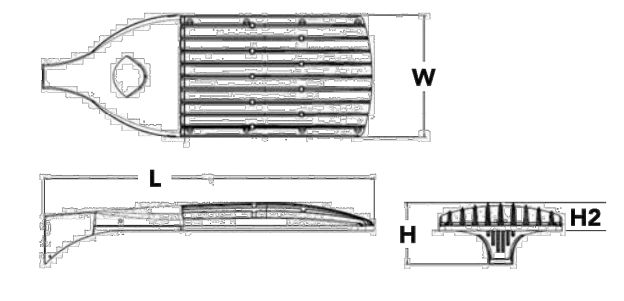
Series	LEDs	Color Temperature	Distribution	Voltage	Mounting			
DSX1 LED	Forward optics P1 P4 ¹ P7 ¹ P2 P5 ¹ P8 P3 P6 ¹ P9 ¹	30K 3000K 40K 4000K 50K 5000K	T1S Type I Short (Automotive) T2S Type II Short T2M Type II Medium T2L Type II Long T3M Type III Medium T4M Type IV Medium TFTM Forward throw medium	TSVS Type V Very Short ¹ TSS Type V Short ¹ TSM Type V Medium ¹ TSL Type V Long ¹ TSW Type V Wide ¹ BLC Backlight control ¹ LCCO Left corner cutoff ¹ RCCO Right corner cutoff ¹	MVOLT ¹ XVOLT (277V-480V) ^{1,2,3} 120 ¹ 208 ¹ 240 ¹ 277 ¹ 347 ¹ 480 ¹	Shipped included SPA Square pole mounting RPA Round pole mounting ¹ WBA Wall bracket ¹ SPUMBA Square pole universal mounting adaptor ¹ RPUMBA Round pole universal mounting adaptor ¹ Shipped separately KMA8 DOBDO U Mast arm mounting bracket adaptor (specify finish) ¹		
Control options								
Shipped installed NLTAR2 All light AIR generation 2 enabled ^{1,2} PIRHN Network, high/low motion/ambient sensor ^{1,2} PIRHN NEMA twist-lock receptacle only (no controls) ^{1,2} PERS Five-wire receptacle only (no controls) ^{1,2,3,4} PER7 Seven-wire receptacle only (no controls) ^{1,2,3,4} DMG 0-10V dimming wires pulled outside fixture (for use with an external control, ordered separately) ^{1,2,3,4} DS Dual switching ^{1,2,3,4}			Other options PIR High/low, motion/ambient sensor, 8-15' mounting height, ambient sensor enabled at 5K ^{1,2} PIRHN High/low, motion/ambient sensor, 15-30' mounting height, ambient sensor enabled at 5K ^{1,2} PIRHFCV High/low, motion/ambient sensor, 8-15' mounting height, ambient sensor enabled at 1K ^{1,2} PIRHFCV Bi-level, motion/ambient sensor, 15-30' mounting height, ambient sensor enabled at 1K ^{1,2} FAO Field adjustable output ^{1,2}			Finish options DOBK Dark bronze DBL Black DNAX Natural aluminum DND White DOBTD Textured dark bronze DBLKD Textured black DNAXD Textured natural aluminum BS Bird spikes ¹ EGS External glare shield		



D-Series Size 2 LED Area Luminaire



Specifications
 EPA: 1.1 ft² (0.10 m²)
 Length: 40" (1.02 m)
 Width: 15" (0.38 m)
 Height 1: 7'-1/4" (2.15 m)
 Height 2: 3.5"
 Weight: 36lbs



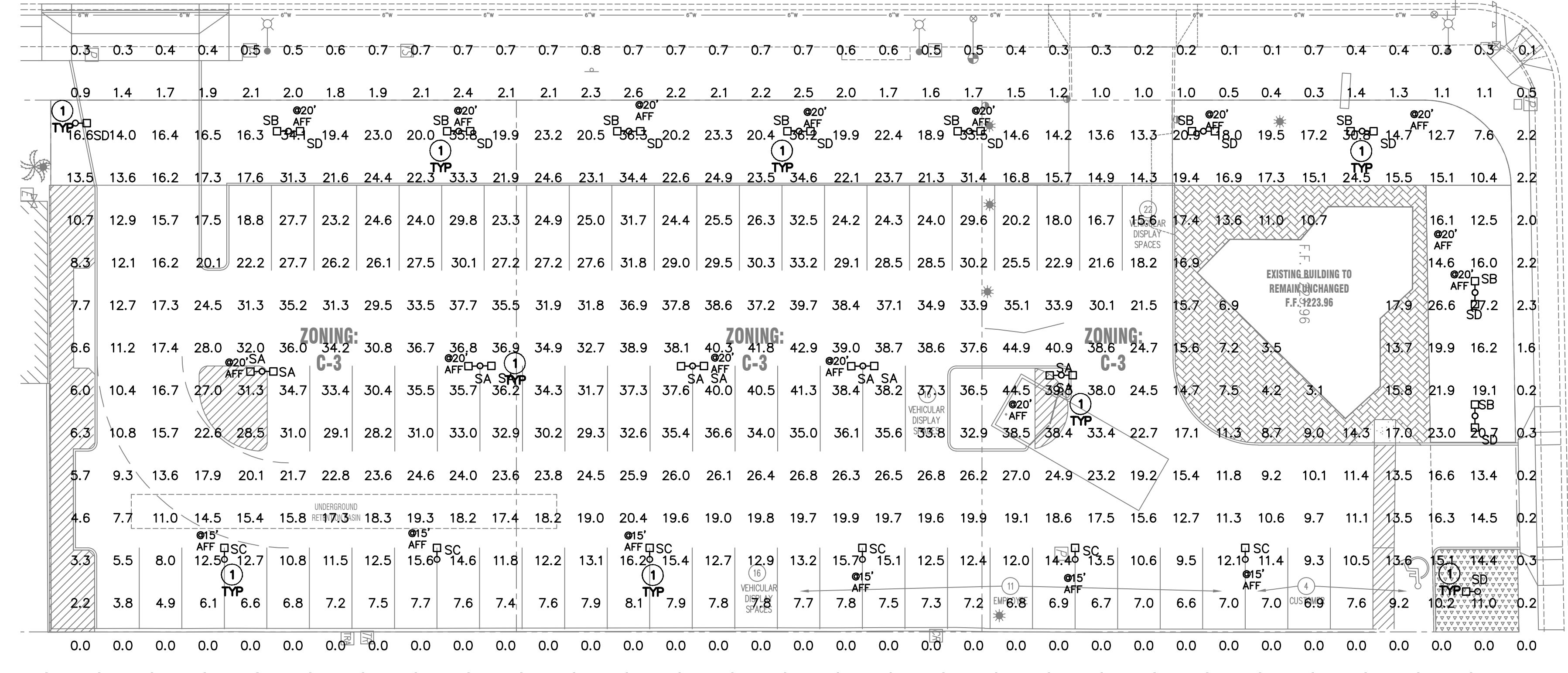
Crating Number	SA
Notes	
Type	

Introduction
 The modern styling of the D-Series is striking yet unobtrusive - making a bold, progressive statement even as it blends seamlessly with its environment. The D-Series distills the benefits of the latest in LED technology into a high performance, high efficacy, long-life luminaire. The outstanding photometric performance results in sites with excellent uniformity, greater pole spacing and lower power density. The Size 2 is ideal for replacing 400-1000W metal halide in area lighting applications with energy savings of up to 80% and expected service life of over 100,000 hours.

Ordering Information EXAMPLE: DSX2 LED P7 40K T3M MVOLT SPA NLTAR2 PIRHN DBXID

Series	LEDs	Color Temperature	Distribution	Voltage	Mounting			
DSX2 LED	Forward optics P1 P5 ¹ P2 P6 P3 P7 ¹ P4 P8 ¹	30K 3000K 40K 4000K 50K 5000K	T1S Type I Short (Automotive) T2S Type II Short T2M Type II Medium T2L Type II Long T3M Type III Medium T4M Type IV Medium TFTM Forward throw medium	TSVS Type V Very Short ¹ TSS Type V Short ¹ TSM Type V Medium ¹ TSL Type V Long ¹ TSW Type V Wide ¹ BLC Backlight control ¹ LCCO Left corner cutoff ¹ RCCO Right corner cutoff ¹	MVOLT ¹ XVOLT (277V-480V) ^{1,2,3} 120 ¹ 208 ¹ 240 ¹ 277 ¹ 347 ¹ 480 ¹	Shipped included SPA Square pole mounting RPA Round pole mounting ¹ WBA Wall bracket ¹ SPUMBA Square pole universal mounting adaptor ¹ RPUMBA Round pole universal mounting adaptor ¹ Shipped separately KMA8 DOBDO U Mast arm mounting bracket adaptor (specify finish) ¹		
Control options								
Shipped installed NLTAR2 All light AIR generation 2 enabled ^{1,2} PIRHN Network, Bi-Level motion/ambient sensor ^{1,2} PER NEMA twist-lock receptacle only (no controls) ^{1,2} PERS Five-wire receptacle only (no controls) ^{1,2,3,4} PER7 Seven-wire receptacle only (no controls) ^{1,2,3,4} DMG 0-10V dimming wires pulled outside fixture (for use with an external control, ordered separately) ^{1,2,3,4} DS Dual switching ^{1,2,3,4}			Other options PIRHN Bi-level, motion/ambient sensor, 15-30' mounting height, ambient sensor enabled at 5K ^{1,2} PIRHFCV High/low, motion/ambient sensor, 15-30' mounting height, ambient sensor enabled at 1K ^{1,2} FAO Field adjustable output ^{1,2}			Finish options DOBK Dark bronze DBL Black DNAX Natural aluminum DND White DOBTD Textured dark bronze DBLKD Textured black DNAXD Textured natural aluminum BS Bird spikes ¹ EGS External glare shield		

SCOTTSDALE ROAD



ROOSEVELT STREET

- GENERAL NOTES:**
- ALL EXTERIOR LIGHT FIXTURES TO COMPLY WITH LOCAL NIGHT SKY ORDINANCE.
 - ALL EXTERIOR ELECTRICAL EQUIPMENT TO BE NEMA-3R RATED.
 - ALL FIXTURES INSTALLED OUTDOORS SHALL BE RATED FOR DAMP/WET LOCATIONS AS REQUIRED. THE CONTRACTOR SHALL COORDINATE DAMP/WET LOCATION RATING PER NEC ARTICLE 410.10(A). ALL INSTALLATIONS SHALL CONFORM TO NEC ARTICLE 410.10, ALL SUB ARTICLES.
 - ALL EXTERIOR LIGHTING SHALL BE LOCATED AND DESIGNED TO PREVENT RAYS FROM BEING DIRECTED OFF OF THE PROPERTY UPON WITH THE LIGHTING IS LOCATED.
 - CONTRACTOR TO COORDINATE EXACT SITE LIGHTING FIXTURE LOCATIONS WITH LANDSCAPE DRAWINGS.

- KEYED NOTES:** #
- RUN POLE LIGHTS CIRCUIT THRU ASTRONOMICAL TIMECLOCK INTERMATIC T100 SERIES OR EQUAL. TYP.

LUMEN DENSITY CALCULATION PRE-CURFEW

FIXTURE	LUMEN	QUANTITY	TOTAL LUMENS
SA	51155	10	511,550
SB	14983	9	134,847
SC	19855	6	119,130
SD	14983	11	164,813

SITE AREA: 55,250 S.F.
 930,340/55,250 S.F. = 16.838 LM/S.F.

NOTE: 50% LUMEN DENSITY (LPD) REDUCTION REQUIRED FROM PRE TO POST-CURFEW.

ZONING: R1-7

ZONING: R1-7

ZONING: R1-7

ZONING: R1-7

ZONING: R1-7

NOTES: EVERY PROJECT IN ALL LIGHTING ZONES SHALL BE ENCOURAGED TO REDUCE AS MUCH AS POSSIBLE THE AMOUNT OF OUTDOOR LIGHTING THAT OPERATES AFTER 11:00 P.M., EXCEPT AS PERMITTED IN PCDCS 2.195.040. ALL NON-SECURITY LIGHTING (EXCEPT FOR THE ILLUMINATION OF ROADWAYS AND STATE AND FEDERAL FLAGS) SHALL BE TURNED OFF BY 11:00 P.M. OR WITHIN ONE HOUR AFTER CLOSE-OF-BUSINESS, WHICHEVER IS LATER. A NIGHTTIME REDUCTION OF AT LEAST 50 PERCENT IN OVERALL LD OR LPD IS REQUIRED. ALL NON-FULL CUTOFF LUMINAIRES IN LIGHTING ZONES C-3 AND R1-7 SHALL BE INCLUDED IN THE FIXTURES BEING TURNED OFF.
 • ALL LIGHT POLES SHALL BE DARK AND NON-REFLECTIVE IN COLOR SUCH AS BLACK OR DARK BRONZE.
 • IN LIGHTING ZONE R1-7, THE MAXIMUM INITIAL VERTICAL ILLUMINANCE AT ANY CALCULATION POINT SHALL NOT EXCEED 0.80 FOOT CANDLES DURING NORMAL BUSINESS EVENING HOURS, AND 0.30 FOOT CANDLES AFTER THE FACILITY ENTERS SECURITY-LIGHTING-ONLY OPERATING MOD

TRUCK MAX

911/925 NORTH SCOTTSDALE ROAD
 SCOTTSDALE, ARIZONA 85257

EO.00

PHOTOMETRIC PLAN PRE CURFEW
 08/11/20

PROJECT NO. 20-54-100
REVISIONS:

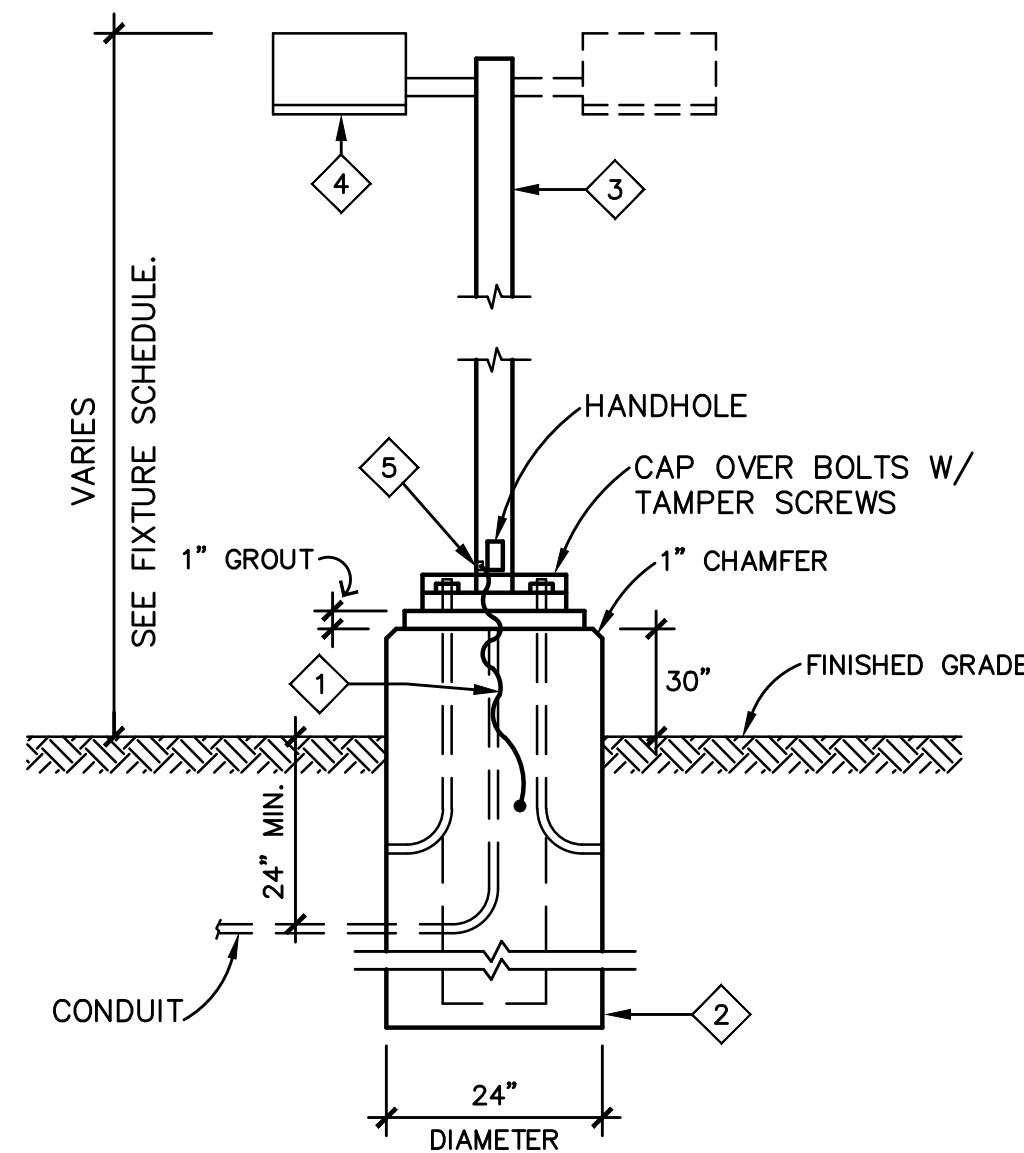


01 PHOTOMETRIC PLAN - PRE CURFEW

SCALE: 1" = 20'-0"

MAVEN ENGINEERING Job #20LPS178
 Tel: (480) 303-0180
 Fax: (480) 302-7827
 8011 S Avenida del Yaqui
 Guadalupe, Arizona 85283
 Note: Any changes made to final bid documents due to field changes will be billed hourly to the contractor.

urban build
 2935 W 16th Ave
 Phoenix, Arizona 85015

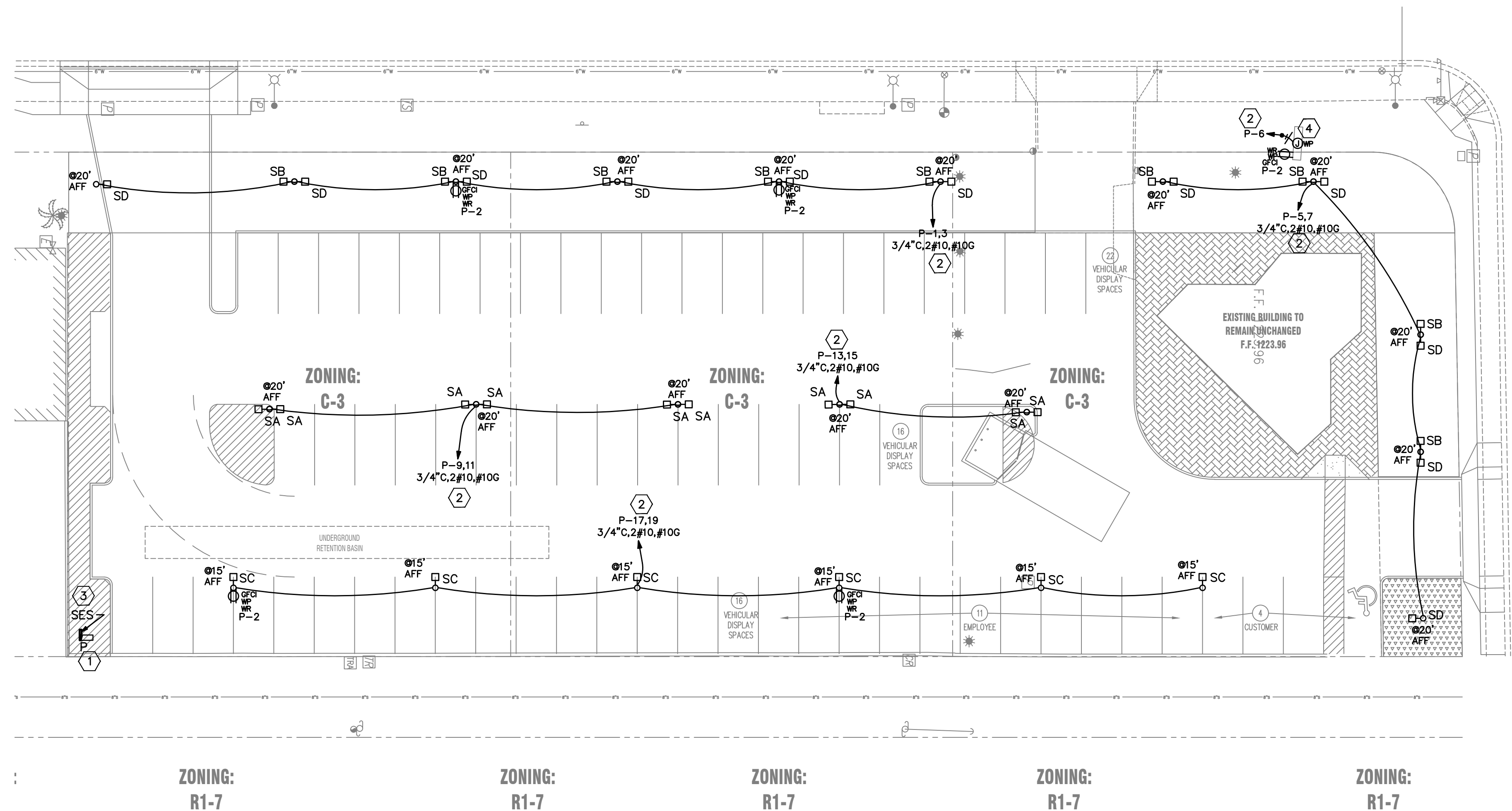


LIGHT POLE AND FIXTURE

NOTE:
CONTRACTOR SHALL PROVIDE NEW POLE BASES WHERE INDICATED ON PLANS. LIGHTING FIXTURE POLE DETAILS AND DESCRIPTIONS ARE FOR ELECTRICAL REFERENCES ONLY. THE POLE AND BASE SHALL BE DESIGNED BY A STRUCTURAL ENGINEER REGISTERED IN THE STATE OF ARIZONA AND BE STAMPED AND SEALED ACCORDINGLY AS A DEFERRED SUBMITTAL.

KEYED NOTES:

- #4 BARE CU. CONDUCTOR, 20'-0" LONG, COILED CONTINUOUS WITHIN THE LIGHT POLE BASE AND BONDED TO REBAR. NOTE: WIRE MAY BE COILED AT THE BASE OF HOLE.
- CONCRETE BASE SEE STRUCTURAL DRAWINGS.
- 4" SQUARE TO MATCH FIXTURE (100mph RATED)
- SEE FIXTURE SCHEDULE FOR TYPE
- PROVIDE (2) LUG TERMINAL ATTACHED TO GROUND STUD.



GENERAL NOTES:

- ALL EXTERIOR LIGHT FIXTURES TO COMPLY WITH LOCAL NIGHT SKY ORDINANCE.
- ALL EXTERIOR LIGHTING AND SIGNAGE TO BE FED WITH #10 CU. U.N.O.
- ALL EXTERIOR ELECTRICAL EQUIPMENT TO BE NEMA-3R RATED.
- CONTRACTOR TO COORDINATE EXACT SITE LIGHTING FIXTURE LOCATIONS WITH LANDSCAPE DRAWINGS.
- ALL FIXTURES INSTALLED OUTDOORS SHALL BE RATED FOR DAMP/WET LOCATIONS AS REQUIRED. THE CONTRACTOR SHALL COORDINATE DAMP/WET LOCATION RATING PER NEC ARTICLE 410.10(A). ALL INSTALLATIONS SHALL CONFORM TO NEC ARTICLE 410.10, ALL SUB ARTICLES.
- ALL PVC CONDUIT MUST HAVE A MINIMUM OF #12 CU. GROUND CONDUCTOR.
- ALL EXTERIOR LIGHTING SHALL BE LOCATED AND DESIGNED TO PREVENT RAYS FROM BEING DIRECTED OFF OF THE PROPERTY UPON WITH THE LIGHTING IS LOCATED.
- FIRE ALARM EQUIPMENT SHALL BE COORDINATED FOR EXACT LOCATION AND REQUIREMENTS WITH FIRE MARSHALL.

POWER

KEYED NOTES:

- PROVIDE NEW PANEL BOARD MAINTAIN 3'-0" INFROUNT WORKING CLEARANCE REFER TO ONE-LINE FOR DETAILS.
- RUN CIRCUIT THRU TIMECLOCK.
- SERVICE ENTRANCE SECTION IN NEMA-3R ENCLOSURE. REFER TO ONE-LINE DIAGRAM AND LOAD CALCULATIONS.
- PROVIDE W.P. J-BOX FOR MONUMENT SITE SIGN. COORDINATE EXACT LOCATION WITH ARCHITECT AND OR OWNER AND ELECTRICAL REQUIREMENTS WITH VENDOR.

ELECTRICAL SYMBOLS

NOT ALL SYMBOLS MAY APPLY.

<ul style="list-style-type: none"> INDICATES CIRCUIT IN CONDUIT CONCEALED IN WALL OR CEILING SPACE. INDICATES HOMERUN TO PANELBOARD OR AS NOTED. HASH MARKS INDICATES NUMBER OF CONDUCTORS. IF NO HASH MARKS PROVIDE 2 CONDUCTORS #12 AWG. MINIMUM CONDUIT 3/4" MINIMUM. SIMPLEX RECEPTACLE, NEMA 5-20R, 15' A.F.F., UNLESS NOTED OTHERWISE. DUPLEX RECEPTACLE, NEMA 5-20R, 18' A.F.F., UNLESS NOTED OTHERWISE. DUPLEX RECEPTACLE, NEMA 5-20R, MTD. 6" ABOVE COUNTER BACK SPLASH OR PER ADA AND ARCHITECT, OR U.A.O. 1/2 SWITCHED DUPLEX RECEPTACLE. FOURPLEX RECEPTACLE, NEMA 5-20R, 18' A.F.F., U.A.O. WALL MOUNTED DUPLEX RECEPTACLE IN DEDICATED CIRCUIT: 20R, 120V, 3 WIRE GROUNDING, 5-20R, MTD. @ +18" A.F.F., (U.A.O.), "HUBBEL" #5362-1, OR EQUAL. WALL MOUNTED DUPLEX RECEPTACLE WITH GROUNDED FAULT CIRCUIT INTERRUPTER: 20A, 120V, 3 WIRE, GROUNDING, NEMA 5-20R, MTD. @ +18" A.F.F. (U.A.O.), "HUBBEL" #5362-1, OR EQUAL, & SHALL BE ON ALL RECEPT. WITHIN 6' OF SINKS, READILY ACCESSIBLE PER NEC. EXISTING RECEPTACLE OUTLET TO REMAIN-NO CHANGES MADE OR REDCIRCUIT AS INDICATED ON PLAN. ALL ISOLATED GROUND RECEPTACLE TO HAVE ORANGE COVER OR ISOLATED GROUND SYMBOL. PROVIDE (1) NEUTRAL, (1) GROUND, & (1) ISOLATED GROUND. PROVIDE LG RECEPTACLE WHEN PANEL SCHEDULE(S) INDICATE ISOLATED GROUND WIRES ON CIRCUIT(S). FLOOR BOX FLUSH MOUNTED IN FLOOR WITH DUPLEX RECEPTACLE (20A, 120V, 3W, GROUNDING) NEMA 5-20R WITH CARPET FLANGE IN CARPETED AREAS. STEEL-CITY #864-S2/864-CST OR EQUAL. FLOOR BOX FLUSH MOUNTED IN FLOOR WITH QUAD-PLEX RECEPTACLE (20A, 120V, 3W, GROUNDING) NEMA 5-20R WITH CARPET FLANGE IN CARPETED AREAS. MOTOR (SIZE AS INDICATED IN DRAWINGS) SPECIAL OUTLET, VERIFY NEMA CONFIGURATION WITH EQUIP. JUNCTION BOX, SIZE PER N.E.C. JUNCTION BOX IN ACCESSIBLE LOCATION WITH FLEXIBLE CONDUIT CONNECTION TO LIGHTING FIXTURE OR EQUIPMENT AS NOTED. 	<ul style="list-style-type: none"> HARDWIRED CONNECTION DISCONNECT SWITCH, SIZE AND POLES AS SHOWN (EX. 30/30) FUSED WITH BUSSMAN, LPKX TYPE U.A.O. VOICE OUTLET, MOUNTED AT +18" A.F.F. U.A.O. PROVIDE 3/4" CONDUIT STUBBED UP TO ACCESSIBLE CEILING SPACE. DATA OUTLET, MOUNTED AT +18" A.F.F. U.A.O. PROVIDE 3/4" CONDUIT STUBBED UP TO ACCESSIBLE CEILING SPACE U.A.O. VOICE AND DATA OUTLET, MOUNTED AT +18" A.F.F. U.A.O. PROVIDE (2)-3/4" CONDUIT STUBBED UP TO ACCESSIBLE CEILING SPACE U.A.O. PROVIDE (1) 3/4" ONLY WHEN VENDOR IS SIMILAR FOR TELEPHONE AND DATA SYSTEMS. <p>ABBREVIATIONS</p> <ul style="list-style-type: none"> C - CONDUIT OCIV - CLOSED CIRCUIT TELEVISION ED - EMPTY CONDUIT WITH PULLWIRE EDF - ELECTRIC DRINKING FOUNTAIN S.E.S. - SERVICE ENTRANCE SECTION TIB - TELEPHONE TERMINAL BOARD TMC - TELEPHONE MOUNTING CABINET VP - VANDAL-PROOF WG - WIRE GUARD OND - GROUND M.L.O. - MAIN LUGS ONLY M.C.B. - MAIN CIRCUIT BREAKER N.E.C. - NATIONAL ELECTRICAL CODE N.L. - NIGHT LIGHT WP - WEATHERPROOF U.A.O. - UNLESS NOTED OTHERWISE I.G. - ISOLATED GROUND E.P. - EXPLOSION PROOF WR - WEATHER RATED WHILE IN-USE COVER
--	---

LUMINAIRE SCHEDULE

CALLOUT	SYMBOL	LAMP	MODEL	DESCRIPTION	BALLAST	MOUNTING	INPUT WATTS	VOLTS
SA	□	(1) 431W LED,	Lithonia Lighting, DSX2 LED P8 50K T5M MVOLT	DSX2 LED P8 50K T5M MVOLT	STANDARD	POLE	431	208V 2P 2W
SB	□	(1) 207W LED,	Lithonia Lighting, DSX1 LED P8 50K RCCO MVOLT	DSX1 LED P8 50K RCCO MVOLT	STANDARD	POLE	207	208V 2P 2W
SC	□	(1) 163W LED,	Lithonia Lighting, DSX1 LED P6 50K T5W MVOLT HS	DSX1 LED P6 50K T5W MVOLT with houseside shield	STANDARD	POLE	163	208V 2P 2W
SD	□	(1) 207W LED,	Lithonia Lighting, DSX1 LED P8 50K LCCO MVOLT	DSX1 LED P8 50K LCCO MVOLT	STANDARD	POLE	207	208V 2P 2W

TRUCK MAX

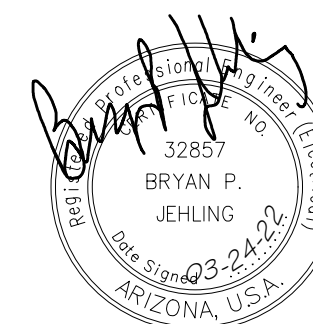
911/925 NORTH SCOTTSDALE ROAD
SCOTTSDALE, ARIZONA 85257

E1.00

ELECTRICAL SITE PLAN
08/11/20

PROJECT NO. 20-54-100

REVISIONS:	



EXPIRES 09/30/22

MAVEN ENGINEERING Job #20LPS178
Tel: (480) 303-0180
Fax: (480) 302-7927
8011 S Avenida del Yaqui
Guadalupe, Arizona 85283

Note: Any changes made to final bid documents due to field changes will be billed hourly to the contractor.



ELECTRICAL SPECIFICATIONS

- SCOPE THE WORK SHALL INCLUDE LABOR, MATERIAL AND EQUIPMENT NECESSARY FOR A COMPLETE AND PROPER WORKING INSTALLATION OF THE ELECTRICAL SYSTEMS INDICATED ON THE DRAWINGS AND SPECIFICATIONS. THE WORK SHALL INCLUDE BUT IS NOT LIMITED TO:
 - CONDUIT, SLEEVES, MOUNTING BOARDS, WALL OUTLETS AND UNDERGROUND DUCT FOR TELEPHONE.
- WORK NOT INCLUDED:
 - FURNISHING AND INSTALLING MOTORS AND AUTOMATIC CONTROLLERS.
- PERMITS AND FEES: MAKE APPLICATION AND PAY FOR PERMITS AND INSPECTIONS REQUIRED BY MUNICIPAL AND STATE AUTHORITIES.
- ELECTRICAL DRAWINGS: DRAWINGS ARE DIAGRAMMATIC AND OUTLET LOCATIONS ARE APPROXIMATE. REFER TO MECHANICAL AND STRUCTURAL PLANS REGARDING AVAILABLE SPACE AND CHECK FIELD CONDITIONS BEFORE MAKING ELECTRICAL INSTALLATIONS. CIRCUIT OUTLETS AS INDICATED ON THE DRAWINGS, MAKING REVISIONS ONLY WITH THE EXPRESS CONSENT OF THE ARCHITECT.
- INSPECTION: THE WORK WILL BE INSPECTED FOR COMPLIANCE WITH DRAWING AND SPECIFICATIONS BY THE OWNER'S REPRESENTATIVE.
- MATERIAL AND WORKMANSHIP: SHALL COMPLY WITH CURRENT ELECTRICAL AND MECHANICAL ENGINEERING PRACTICES. THE NATIONAL ELECTRICAL CODE AND ALL LOCAL CODES SHALL GOVERN ALL WORK. PROVIDE NEW STANDARD PRODUCTS LISTED BY UL. SIMILAR ITEMS OF MATERIAL SHALL BE OF THE SAME TYPE AND MANUFACTURES. ALL EXPOSED CONDUITS AND DEVICES SHALL BE TRUE TO LINE, PLUMB AND ADEQUATELY SECURED IN PLACE. ALL WIRING DEVICES, FIXTURES AND PANELBOARDS SHALL BE PROTECTED FROM MOISTURE, PLASTER AND DUST DURING STORAGE AND BUILDING CONSTRUCTION.
- GROUNDING: PROVIDE GROUNDING CONDUCTOR OF SIZE INDICATED ON DRAWINGS IN ACCORDANCE WITH THE NEC AND ALL LOCAL CODES. BOND THE INTERIOR WATER PIPE SYSTEM TO THE MAIN ELECTRICAL GROUNDING SYSTEM.
- CONDUIT: ALL WIRES (EXCEPT NM CABLE AND LOW VOLTAGE CONTROL) SHALL BE RUN IN CONDUIT. RIGID GALVANIZED STEEL CONDUIT SHALL BE USED IN CONCRETE AND UNDERGROUND LOCATIONS. STEEL CONDUIT INSTALLED UNDERGROUND SHALL BE ENCASED IN TWO INCH MINIMUM, CONCRETE ENVELOPE OR COMPLETELY COVERED WITH HALF-LAPPED #50 SCOTCH-WRAP TOP OF UNDERGROUND. CONDUITS SHALL NOT BE LESS THAN 24". PVC ELECTRICAL CONDUIT, UL LISTED MAY BE USED FOR UNDERGROUND SECTIONS OF LIGHTING CIRCUITS AND FEEDER RACEWAYS. ALL NON-METALLIC CONDUITS SHALL HAVE BOND WIRES, EXCEPT FEEDING SERVICES.

THIN-WALL EMT SHALL BE EQUIPPED WITH WATERTIGHT COUPLING AND T & B INSULINERS CONNECTORS.

CONDUIT AND EMT SHALL BE RIGIDLY SUPPORTED WITH DURABLE STRAPS AND HANGERS AT INTERVALS NOT TO EXCEED SIX FEET. COUPLINGS CONNECTORS AND LOCKNUTS SHALL BE TIGHTLY SECURED TO PROVIDE ELECTRICAL CONTINUITY OF GROUNDING.

RIGID STEEL CONDUIT SHALL BE HEAVY-WALLED, HOT-DIPPED, GALVANIZED OR SHERARIZED. USE RIGID STEEL CONDUIT IN CONCRETE SLABS, IN GRADE, IN EXPOSED LOCATIONS SUCH AS TUNNELS AND EQUIPMENT ROOMS, WHERE EXPOSED TO WEATHER AND WHERE BURIED IN EARTH. SCHEDULE 40 PVC NON-METALLIC CONDUIT MAY BE USED BURIED IN EARTH MINIMUM 24" BELOW GRADE. ALL CONDUIT EXTENDED UNDER DRIVEWAYS OR AREAS OF VEHICULAR USAGE SHALL BE GALVANIZED HEAVY WALL STEEL CONDUIT OR SCHEDULE 80 PVC NON-METALLIC CONDUIT, MINIMUM 30" BELOW GRADE. STEEL CONDUIT INSTALLED UNDERGROUND SHALL BE ENCASED IN TWO INCH MINIMUM, CONCRETE ENVELOPE OR COMPLETELY COVERED WITH HALF-LAPPED #50 SCOTCH-WRAP. TOP OF UNDERGROUND CONDUITS SHALL NOT BE LESS THAN 24". PVC ELECTRICAL CONDUIT, UL LISTED MAY BE USED FOR UNDERGROUND SECTIONS OF LIGHTING CIRCUITS AND FEEDER RACEWAYS. ALL NON-METALLIC CONDUITS SHALL HAVE BOND WIRES, EXCEPT WHEN FEEDING SERVICES.

8. OUTLET BOXES: GALVANIZED STEEL BOXES AT LEAST 1-1/2" DEEP AND 4" SQUARE SHALL BE PROVIDED IN FINISHED AREAS FOR EACH WALL SWITCH, RECEPTACLE, TELEPHONE AND LIGHTING FIXTURE LOCATION. BOXES SURFACE MOUNTED IN DRY LOCATIONS MAY BE 4 X 2 SIZE PROVIDING NOT MORE THAN FIVE WIRES ENTER.

9. WIRING DEVICES: CONVENIENCE RECEPTACLES, HUBBELL OR APPROVED EQUAL, 15 AMPS, 125 VOLT GROUNDING TYPE WITH IVORY, PLASTIC PLATE IN FINISHED AREAS. PROVIDE WEATHER PROOF RECEPTACLE OUTLET FOR EXTERIOR LOCATIONS. CLOCK RECEPTACLES SHALL BE HUBBELL COMPLETE WITH IVORY PLASTIC PLATE. SWITCHES SHALL BE HUBBELL SINGLE-POLE, OR APPROVED EQUAL, WHERE INDICATED WITH PLATE TO MATCH RECEPTACLES. TELEPHONE WALL OUTLETS SHALL BE EQUIPPED WITH ONE-HOLE WALL PLATES TO MATCH RECEPTACLES.

10. WIRE AND CABLE: CONDUCTORS SHALL BE SOFT DRAWN COPPER, WITH THWN-2 INSULATION, NM CABLE SHALL BE #12 AWG MINIMUM EXCEPT LOW-VOLTAGE CONTROL WIRE MAY BE #16 PLASTIC INSULATED.

11. MOTOR AND CONTROL WIRING: WIRE TO AND CONNECT MOTORS AND CONTROLS INDICATED ON THE DRAWINGS NOT PRE-WIRED BY THE SUPPLIER OF THE EQUIPMENT.

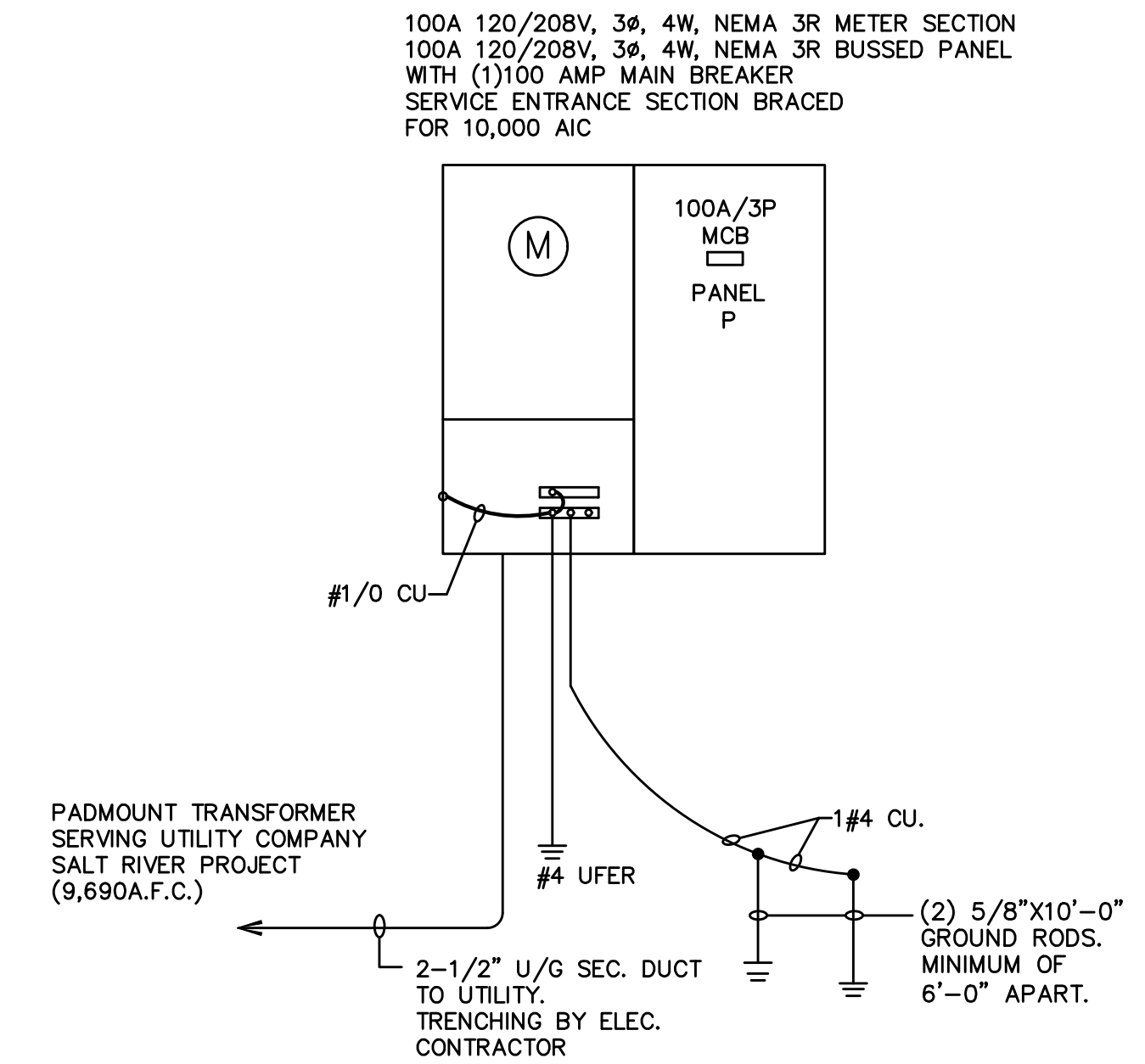
12. AS BUILT DRAWINGS: MAINTAIN ONE SET OF PRINTS ON THE JOB SHOWING LOCATIONS OF UNDERGROUND CONDUITS AND DUCTS. PROVIDE THE ARCHITECT WITH ONE SET OF SUCH "AS BUILT" ACCURATE, NEAT AND LEGIBLE DRAWINGS ON COMPLETION OF THE WORK.

13. GUARANTEE: THE CONTRACTOR SHALL GUARANTEE ALL MATERIAL FURNISHED BY HIM AND ALL WORKMANSHIP UNDER THIS CONTRACT FOR A PERIOD OF ONE YEAR FROM THE DATE OF FINAL ACCEPTANCE OF WORK UNDER THIS CONTRACT. ANY DEFECTS DEVELOPED WITHIN THIS PERIOD TRACEABLE TO MATERIAL FURNISHED AS A PART OF THIS CONTRACT OR WORKMANSHIP PERFORMED HEREUNDER, SHALL BE MADE GOOD PROMPTLY AT THIS CONTRACTOR'S EXPENSE. THIS CONTRACTOR SHALL ACCEPT THIS CONDITION AND FULLY UNDERSTAND ITS PROVISIONS PRIOR TO THIS CONTRACT BEING AWARDED AND NO CLAIM FOR EXTRA COMPENSATION SHALL BE ALLOWED FOR CORRECTION OF FAULTY WORK OR REPLACING DEFECTIVE MATERIAL.

FAULT CURRENT SCHEDULE

DEVICE	AIC RATING	L-N VOLTS	UTILITY			FED FROM				FEEDER				TRANSFORMER KVA	TOTAL MOTOR FAULT	DIRECTLY CONNECTED MOTOR LOAD			
			FAULT	X	R	DEVICE	FAULT	X	R	SIZE	X / 1000'	R / 1000'	LENGTH			X	R	KVA	FAULT
SES	10,000	120V	9,690	0.01214	0.002429					#3/0	0.042	0.077		0	0				
P	10,000	120V	9,533	0.01227	0.002829	SES	9,690	0.01214	0.002429	#1	0.046	0.15	2'-8"	0.0001	0.0004				

CKT #	CKT BKR	CIRCUIT DESCRIPTION	KVA LOAD			CKT #	CKT BKR	CIRCUIT DESCRIPTION	KVA LOAD		
			A	B	C				A	B	C
1	20/2	LIGHTING	1.14			2	20/1	EXT.REC.GFCI	0.9		
3			1.14			4	20/1	TIMECLOCK		0.3	
5	20/2	LIGHTING			0.932	6	20/1	MISC. MONUMENT SIGN			1.2
7			0.932			8	-/1	SPACE	0		
9	20/2	LIGHTING			1.29	10	-/1	SPACE	0	0	
11			1.29			12	-/1	SPACE	0	0	0
13	20/2	LIGHTING			0.862	14	-/1	SPACE	0		
15			0.862			16	-/1	SPACE	0	0	
17	20/2	LIGHTING			0.489	18	-/1	SPACE	0		0
19			0.489			20	-/1	SPACE	0		
TOTAL CONNECTED KVA BY PHASE									4.32	3.59	3.91
TOTAL CONNECTED AMPS BY PHASE									36.1	30.1	32.6
BALANCED THREE PHASE AMPS 39.4											
LIGHTING			9.43	11.8	(125%)	CONTINUOUS			0	0	(125%)
LARGEST MOTOR			0	0	(125%)	HEATING			0	0	(100%)
OTHER MOTORS			0	0	(100%)	NONCONTINUOUS			0	0	(100%)
RECEPTACLES			2.4	2.4	(50%>10)	KITCHEN EQUIP			0	0	(N/A)
KITCHEN			0	0	(100%)	NONCOIN/DIVERSE			0	0	(N/A)
TOTAL KVA			11.8	14.2		TOTAL KVA			11.8	14.2	



ONE-LINE NOTES:

- SWITCHBOARD COMPONENTS, INCLUDING OVERCURRENT PROTECTIVE DEVICES SHALL BE FULLY RATED FOR THE AVAILABLE FAULT CURRENT SHOWN.
- PROVIDE ARC FLASH AND SHOCK HAZARD WARNING IDENTIFICATION PER NEC ARTICLE 110.16
- NO DESIGN CHANGES MAY BE MADE TO THE SYSTEM WITHOUT THE PRIOR APPROVAL OF THE DESIGN ENGINEER AND THE ELECTRICAL INSPECTOR.

PANEL SCHEDULE NOTES:

A. A.I.C. RATING SHOWN ON PANEL SCHEDULES ARE THE MINIMUM RATING FOR NEW AND REPLACEMENT OVERCURRENT PROTECTIVE DEVICES. EACH DEVICE SHALL BE FULLY RATED AT AFC AS SHOWN ON ONE-LINE DIAGRAM.

B. ALL PANEL BOARDS SHALL HAVE A TYPE WRITTEN DIRECTORY IDENTIFYING EACH NUMBERED CIRCUIT PLACED IN A DIRECTORY HOLDER INSIDE THE DOOR.

C. THE CONTRACTOR SHALL PERMANENTLY MARK WITH CURRENT FIELD MARKING OF SERVICE EQUIPMENT ON THE COVERPLATES OF RECEPTACLES, EQUIPMENT, AND LIGHTING JUNCTION BOXES. (STICK ON LABELS NOT ACCEPTABLE)

E.C. SHALL PROVIDE MAX AVAILABLE FAULT CURRENT FIELD MARKING OF SERVICE EQUIPMENT INCLUDING THE DATE THE CALCULATIONS WERE PERFORMED PER 2011 NEC 110.24

PARTIAL ONE-LINE DIAGRAM

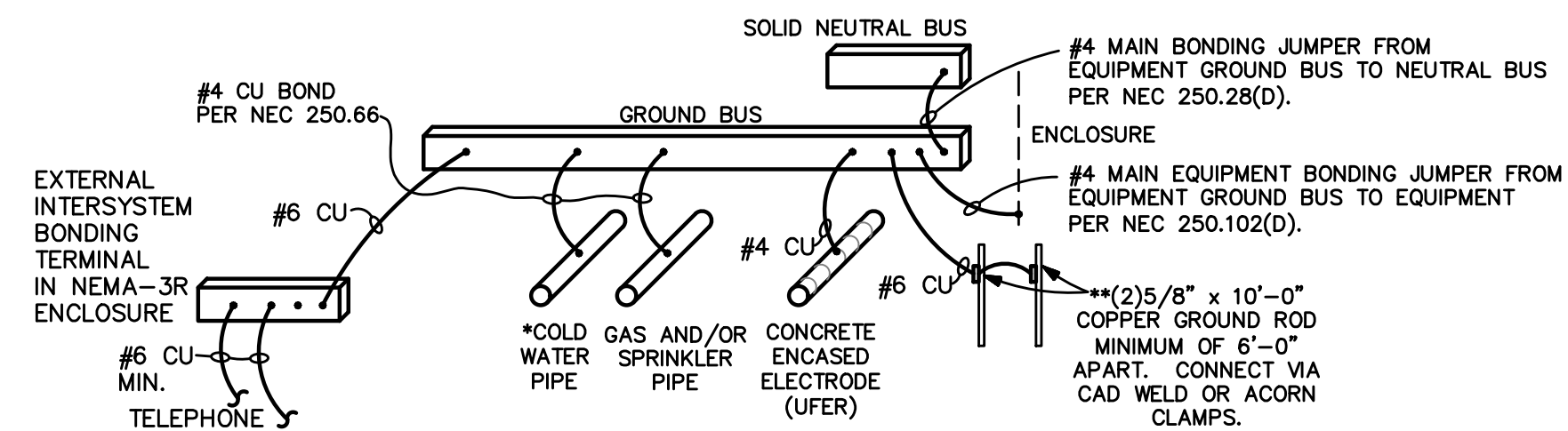
N.T.S.

GENERAL NOTES :

- DASHED LINES INDICATE EXISTING EQUIPMENT. SOLID LINES INDICATE NEW EQUIPMENT U.N.O.
- ALL NEW ELECTRICAL GEAR TO MATCH EXISTING BRAND EQUIPMENT U.N.O. CONTRACTOR SHALL VERIFY EXISTING ELECTRICAL COMPONENTS(FUSES/PANELS/BREAKERS) NEEDING TO BE REPLACED OR UPDATED DUE TO CURRENT CODES, DAMAGE OR DISCONTINUED GEAR. CONTRACTOR SHALL TAKE INTO CONSIDERATION FULLY RATED OR SERIES RATED SYSTEM AND VERIFY AVAILABILITY OF REPLACEMENT COMPONENTS WITH THE MANUFACTURER AND NOTIFY THE ARCHITECT AND ENGINEER IF NEW GEAR IS NEEDED TO COMPLETE THE SCOPE OF WORK FROM STARTING WORK. E.C. SHALL PROVIDE ALTERNATE BID TO REPLACE EXISTING PANEL(S) AS NEEDED.
- CONDUIT RUN - PER NEC 350.26 THERE SHALL NOT BE MORE THAN THE EQUIVALENT OF FOUR QUARTER BENDS (360 DEGREES TOTAL) BETWEEN PULL POINTS. PROVIDE PULLBOX AS NEEDED.
- NEW FEEDERS SHALL RUN BELOW GRADE OR IN CEILING SPACE/BUILDING ROOF STRUCTURE - DO NOT INSTALL IN BUILDING INSULATION. FEEDERS SHALL NOT RUN EXPOSED TO DIRECT SUN LIGHT - EXCEPTION: HVAC FEEDERS 10'-0" OR LESS.
- WHERE NOT SPECIFIED FEEDERS SHALL BE COPPER.

LOAD CALC @SES

TOTAL CONNECTED KVA BY PHASE			4.32	3.59	3.91			
	CONN. KVA	CALC. KVA				CONN. KVA	CALC. KVA	
LIGHTING	9.43	11.8	(125%)			CONTINUOUS	0	0
LARGEST MOTOR	0	0	(125%)			HEATING	0	0
OTHER MOTORS	0	0	(100%)			NONCONTINUOUS	0	0
RECEPTACLES	2.4	2.4	(50%>10)			KITCHEN EQUIP	0	0
KITCHEN	0	0	(100%)			NONCOIN/DIVERSE	0	0
TOTAL KVA			11.8	14.2		TOTAL KVA		
BALANCED THREE PHASE AMPS 39.4								



SERVICE GROUNDING DETAIL

NOT TO SCALE * CONNECTION TO 10' OR MORE OF METALLIC UNDERGROUND COLD WATER PIPE. IF PVC IS USED FOR COLD WATER LINE E.C. SHALL BOND TO ANY METAL SECTION OF THE WATER LINE IF READILY AVAILABLE PER NEC 250.104(B) AS AN ALTERNATE WHEN PERMITTED BY THE AHJ ** PROVIDE ALL AVAILABLE GROUNDING AND BONDING CONNECTIONS. COPPER GROUND RODS WITH #6 GEC ONLY REQUIRED IF CONCRETE ENCASED ELECTRODE IS NOT AVAILABLE.

MAVEN ENGINEERING Job #20LPS178
Tel: (480) 303-0180 Fax: (480) 302-7827
8011 S Avenida del Yaqui
Guadalupe, Arizona 85283
Note: Any changes made to final bid documents due to field changes will be billed hourly to the contractor.

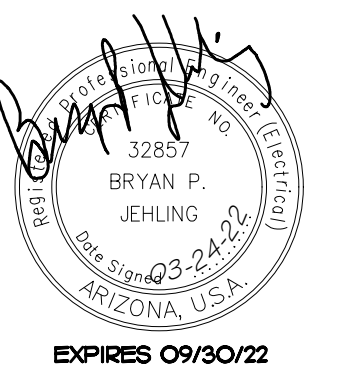
urban build
2935 W 16th Ave
Phoenix, Arizona 85015

TRUCK MAX
911/925 NORTH SCOTTSDALE ROAD
SCOTTSDALE, ARIZONA 85257

E2.00
ONE-LINE DIAGRAM
08/11/20

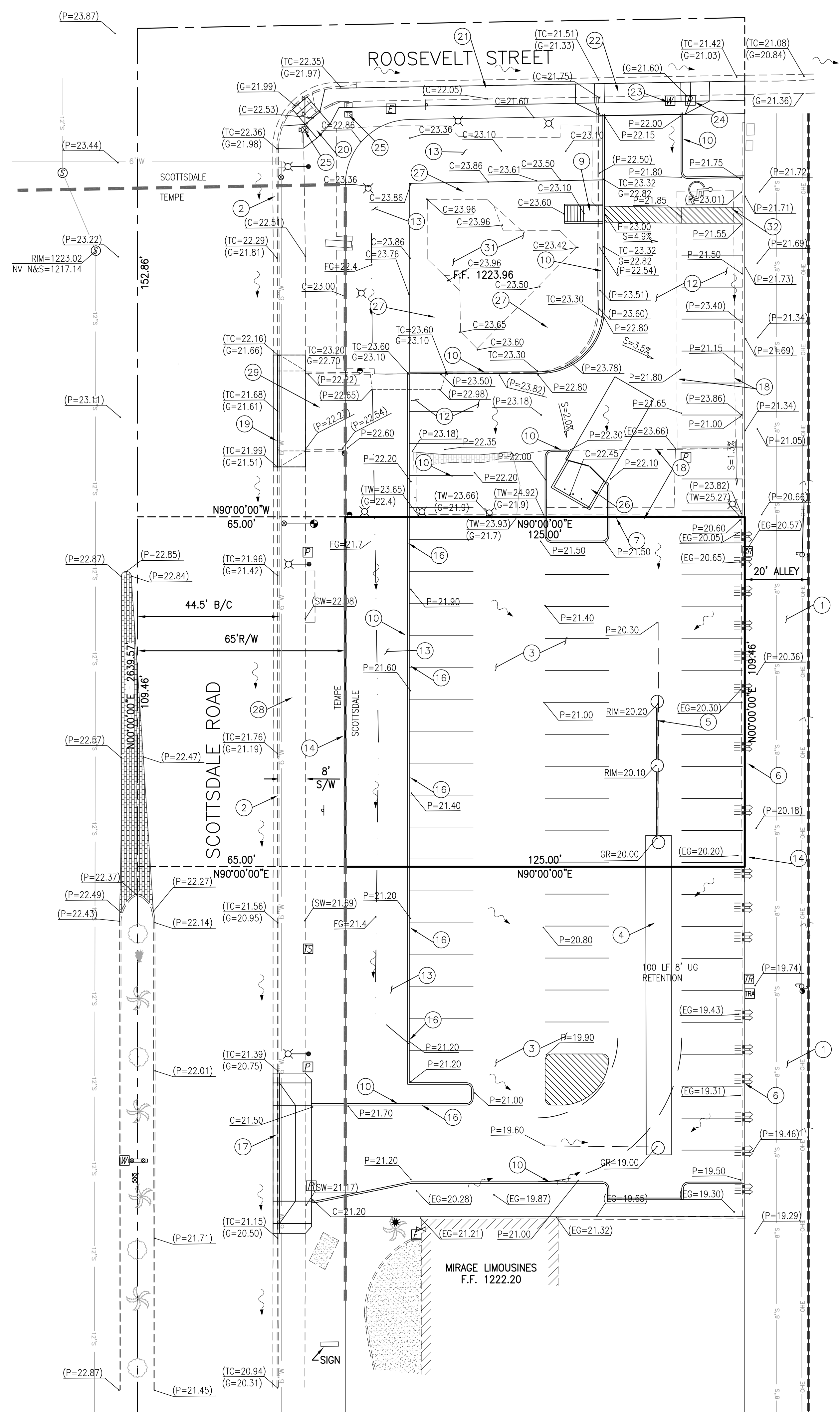
PROJECT NO. 20-54-100

REVISIONS	



EXPIRES 09/30/22

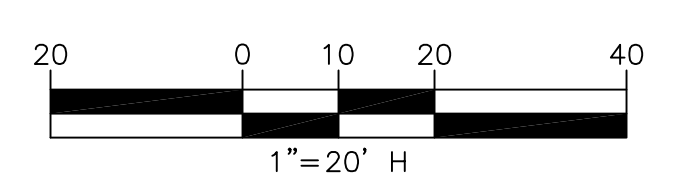
Feb 03, 2022 - 4:01pm
 C:\Users\166_Scottsdale-Roosevelt\Drawings\WEEK 466_inpr_plans.dwg



KEYED NOTES

1. EXISTING ALLEY TO REMAIN
2. EXISTING OFFSITE IMPROVEMENT TO REMAIN
3. NEW ONSITE PAVING - 3" AC OVER 6" ABC OVER 8" PREPARED SUBGRADE.
4. NEW 8" DIAMETER UG RETENTION. INVERT OF PIPE SHALL BE FLUSH PER COS STD DET 2254. SEE DETAIL ON SHEET C-4.
5. INSTALL DUAL CHAMBER DRYWELL PER MAXWELL OR APPROVED EQUAL.
6. EXISTING WALL TO REMAIN - PROTECT IN PLACE
7. REMOVE RETAINING WALL
8. SAWCUT LINE
9. NEW 12:1 RAMP
10. NEW 6" CURB PER MAG STD DET 222
11. NEW 1" FLOW THRU FLUME
12. REMOVE/REPLACE PAVEMENT
13. LANDSCAPE AREA - SEE LANDSCAPE PLAN
14. 100 YR 2 HR CONTRIBUTING AREA
15. NEW CONCRETE DISPLAY PAD
16. CONSTRUCT 2" CURB OPENING. GRADE LANDSCAPE AREAS TO ALLOW THESE AREAS TO RUNOFF TO PAVEMENT AREAS. SEE DETAIL BELOW.
17. NEW DRIVE PER CITY OF TEMPE COT T-320
18. REMOVE CANOPY
19. REMOVE DRIVEWAY AND CONSTRUCT VERTICAL CURB PER MAG STD DET 220 - MATCH SAME HEIGHT AS ADJOINING CURB. INSTALL 8" SIDEWALK PER MAG STD 230.
20. CONSTRUCT RAMP PER COS STD DET 2234. REPLACE CURB AS NECESSARY
21. CONSTRUCT 6" SIDEWALK PER MAG STD DET 230
22. CONSTRUCT DRIVE PER COS STD DET 2251-1
23. RELOCATE WATER METER BOX OUT OF DRIVEWAY. INSTALL NEW TAP TO MAIN IN ROOSEVELT.
24. RELOCATE PULLBOX
25. RELOCATE OR REPLACE TRAFFIC SIGNAL POLE AND CONTROLLER
26. CONSTRUCT REFUSE ENCLOSURE PER COS STD DET 2146-1
27. CONSTRUCT PAVERS IN FRONT FLATWORK - SEE ARCH SITE PLAN
28. 8' TEMPE SIDEWALK TO REMAIN
29. REMOVE PAVEMENT
30. GRADE SHALLOW SWALE TO DRAIN SOUTH
31. BUILDING TO REMAIN
32. PAVE ADA PARKING MAX 2% IN ALL DIRECTIONS - SIGN PER COS AND ADA REGULATIONS

CONTRACTOR SHALL FAMILIARIZE THEMSELVES WITH ALL SITEWORK DISCIPLINES, INCLUDING, BUT NOT LIMITED TO, BUILDING, LANDSCAPE, DRY UTILITIES, LIGHTING, LOW VOLTAGE, FUEL SYSTEM, ETC AND COORDINATE ALL WORK APPROPRIATELY.



CLIENT:
 Urban Rebuild
 2935 N. 16th Ave
 Phoenix, AZ 85015
 (602) 796-7700



Helix Engineering, LLC
 Engineering / Surveying / Consulting
 3240 E Union Hills
 Suite 113
 Phoenix AZ 85050
 (602) 788-2616
 www.hxeng.com

THIS DRAWING IS COPYRIGHTED AND IS THE SOLE PROPERTY OF THE OWNER. IT IS PRODUCED SOLELY FOR USE BY THE OWNER AND ITS AFFILIATES. REPRODUCTION OR USE OF THIS DRAWING AND/OR THE INFORMATION CONTAINED IN IT IS FORBIDDEN WITHOUT THE WRITTEN PERMISSION OF THE OWNER.

TWO WORKING DAYS BEFORE YOU DIG.
 CALL FOR THE BLUE STAKES
 1-800-782-5348
 BLUE STAKE CENTER

RELEASE	
DATE	
6-19-20	ADDED TOPO
7-9-20	UPDATED SITE PLAN
2-3-22	REV SP, CITY COMMENTS

REVISIONS	
NO.	DATE
1	
2	
3	

PROJECT NAME

TRUCK MAXX

PROJECT ADDRESS

Roosevelt / Scottsdale
 925 N. Scottsdale Rd
 Scottsdale, AZ 85257

PROJECT AREA

HELIX JOB NUMBER: 466 IN HOUSE

DRAWN BY: MT
 CHECKED BY: SB

SHEET TITLE

G / D PLAN

SHEET: C-3 PAGE: 3 OF 5

PLOT SCALE: 1:1 @ 24"x36"; 1:2.2 @ 11"x17"

PLAN REVIEW 1690-20-1

**CITY OF SCOTTSDALE
LANDSCAPE NOTES:**

AN AUTOMATIC IRRIGATION SYSTEM WILL BE INSTALLED GUARANTEEING 100% COVERAGE TO ALL LANDSCAPE AREAS.

ALL LANDSCAPE AREAS WILL BE TOP-DRESSED WITH A 2" DEPTH OF DECOMPOSED GRANITE,

PROVIDE 8% SLOPE AWAY FROM WALK OR CURB FOR 5' ALONG ALL STREETS.

ALL RIGHT OF WAYS ADJACENT TO THIS PROPERTY SHALL BE LANDSCAPED AND MAINTAINED BY THE PROPERTY OWNER

ANY EXISTING LANDSCAPE MATERIALS INCLUDING TREES DAMAGED OR DESTROYED AS A RESULT OF THIS CONSTRUCTION SHALL BE REPLACED TO THE SATISFACTION OF CITY STAFF, WITH LIKE KIND AND SIZE PRIOR TO RECEIVING A CERTIFICATE OF OCCUPANCY.

AREAS WITHIN THE SIGHT DISTANCE TRIANGLES IS TO BE CLEAR OF LANDSCAPING, SIGNS, OR OTHER VISIBILITY OBSTRUCTIONS WITH A HEIGHT GREATER THAN 1'-6". TREES WITHIN THE SAFETY TRIANGLE SHALL HAVE A CANOPY THAT BEGINS AT 8 FEET IN HEIGHT UPON INSTALLATION. ALL HEIGHTS ARE MEASURED FROM NEAREST STREET LINE ELEVATION.

ALL RIGHT-OF-WAY ADJACENT TO THIS PROPERTY SHALL BE LANDSCAPED AND MAINTAINED BY THE PROPERTY OWNER.

ALL SLOPES ON SITE ARE 4:1 MAX

NO TURF AREAS ARE TO BE PROVIDED.

SEE ARCHITECTURAL SITE PLAN FOR SETBACK DIMENSIONS.

SEE ARCHITECTURAL FOR SITE LIGHTING LOCATIONS. SEE ELECT. DRAWINGS FOR ALL LIGHTING SPECIFICATIONS.

SEE ARCHITECTURAL FOR SITE WALL ELEVATIONS, COLORS

SEE CIVIL DRAWINGS FOR ALL RETENTION AREAS, SECTIONS, AND SLOPE RATIOS.

SEE ARCHITECTURAL FOR BIKE RACK DETAILS.

ALL SIGNS REQUIRE SEPARATE APPROVALS & PERMITS.

"SETBACK ALL SPRAY & STREAM TYPE IRRIGATION HEADS 1'-0" FROM BACK OF CURB OR SIDEWALK TO REDUCE OVER SPRAY".

A MINIMUM 50 PERCENTAGE (UNLESS OTHERWISE STIPULATED BY THE DEVELOPMENT REVIEW BOARD, and/or THE ZONING ORDINANCE REQUIREMENTS) OF THE PROVIDED TREES SHALL BE MATURE TREES, PURSUANT TO THE CITY OF SCOTTSDALE'S ZONING ORDINANCE ARTICLE X, SECTION 10.301, AS DEFINED IN THE CITY OF SCOTTSDALE'S ZONING ORDINANCE ARTICLE III, SECTION 3.100.

A SINGLE TRUNK TREE'S CALIPER SIZE, THAT IS TO BE EQUAL TO OR LESS THAN 4-INCHES, SHALL BE DETERMINED BY UTILIZING THE SMALLEST DIAMETER OF THE TRUNK 6-INCHES ABOVE FINISHED GRADE ADJACENT TO THE TRUNK.

A TREE CALIPER SIZE, FOR SINGLE TRUNK TREES WHICH HAVE A DIAMETER GREATER THAN 4-INCHES, SHALL BE DETERMINED BY UTILIZING THE SMALLEST DIAMETER OF THE TRUNK 12-INCHES ABOVE FINISHED GRADE ADJACENT TO THE TRUNK.

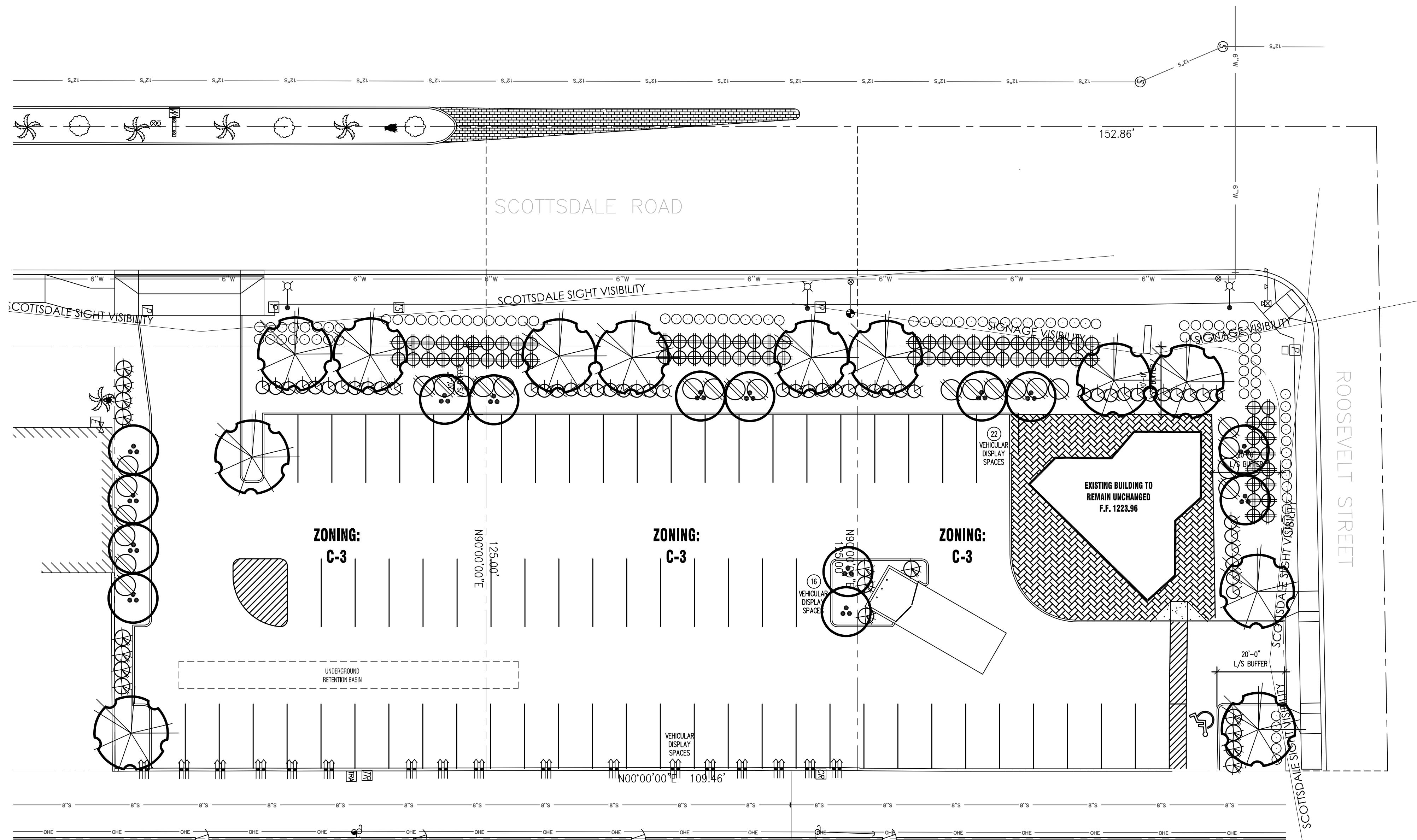
A MULTI TRUNK TREE'S CALIPER SIZE IS MEASURED AT 6-INCHES ABOVE THE LOCATION THAT THE TRUNK SPLITS ORIGINATES, OR 6-INCHES ABOVE FINISHED GRADE OF ALL TRUNKS ORIGINATE FROM THE SOIL.

RETENTION/DETENSION BASINS SHALL BE CONSTRUCTED SOLELY FROM THE APPROVED CIVIL PLANS. ANY ALTERATION OF THE APPROVED DESIGN (ADDITIONAL FILL, BOULDERS, ECT.) SHALL REQUIRE ADDITIONAL FINAL PLANS STAFF REVIEW AND APPROVAL.

NO LIGHTING IS APPROVED WITH THE SUBMITTAL

THE LANDSCAPE SPECIFICATION SECTION(S) OF THESE PLANS HAVE NOT REVIEWED AND SHALL NOT BE A PART OF THE CITY OF SCOTTSDALE'S APPROVAL.

NEW LANDSCAPING, INCLUDING SALVAGED PLANT MATERIAL, AND LANDSCAPING INDICATED TO REMAIN, WHICH IS DESTROYED, DAMAGED, OR EXPIRES DURING CONSTRUCTION SHALL BE REPLACED WITH LIKE SIZE, KIND, AND QUALITY PRIOR TO THE ISSUANCE OF THE CERTIFICATE OF OCCUPANCY / LETTER OF ACCEPTANCE TO THE SATISFACTION OF THE INSPECTION SERVICES STAFF.

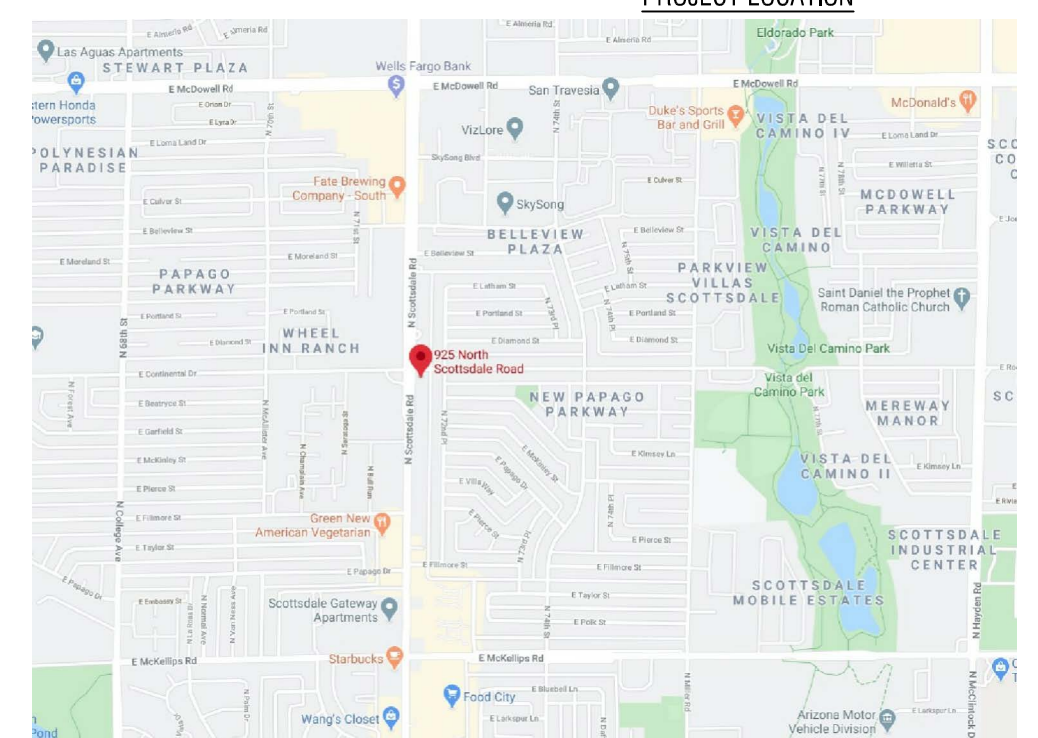


LANDSCAPE LEGEND

- PISTACHE 'RED-PUSH' - RED PUSH PISTACHE 36" BOX
- SOPHORA SECUNDIFLORA TEXAS MOUNTAIN LAUREL 24" BOX
- MUHLENBERGIA RIGENS DEER GRASS 5 GALLON
- DASYLIION WHEELERII DESERT SPOON 5 GALLON
- LEUCOPHYLLUM FRUTESCENS 'GREEN CLOUD' 5 GALLON
- LANTANA MONTEVIDENSIS 'GOLD MOUND' 1 GALLON
- LANTANA MONTEVIDENSIS TRAILING PURPLE 1 GALLON
- BOUGAINVILLEA 'TORCH GLOW' BUSH BOUGAINVILLEA 5 GALLON
- 1/2" SCREENED APACHE BROWN DECOMPOSED GRANITE 2" DEPTH IN ALL LANDSCAPE AREAS

LANDSCAPE PLAN
SCALE: 1" = 20'-0"

VICINITY MAP
SCALE: N.T.S.



**LANDSCAPE PLAN
APPROVED**
CITY OF SCOTTSDALE

CASE NUMBER	APPROVED	DATE
XX - DR - 2022		

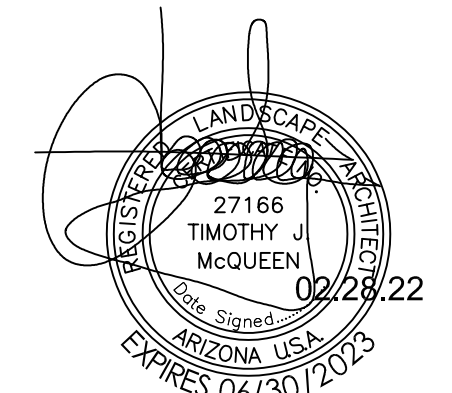
CONSTRUCTION AND INSTALLATION SHALL BE IN ACCORDANCE WITH THIS PLAN AND ANY AND ALL DEVIATIONS WILL REQUIRE REAPPROVAL. LANDSCAPE INSTALLATION TO BE APPROVED BY CITY OF SCOTTSDALE INSPECTION SERVICES BEFORE CERT. OF OCCUPANCY IS ISSUED.

Case No: XX - DR - 2022

TRUCK MAX
911/925 NORTH SCOTTSDALE ROAD
SCOTTSDALE, ARIZONA 85257

AS1.01
LANDSCAPE PLAN
02/28/22

REVISIONS:	DATE	DESCRIPTION



T.J. McQUEEN & ASSOCIATES, INC.
LANDSCAPE ARCHITECTURE
URBAN DESIGN
SITE PLANNING

10450 N. 74th Street, Suite 120
Scottsdale, Arizona 85258
P. (602)265-0320

EMAIL: timmqueen@tjmla.net

TJM ASSOCIATES

urban@build

2935 W 16th Ave
Phoenix, Arizona 85015