

## 1 SITE PLAN - REFUSE PLAN

SCALE: 1" = 30'-0"

### PRIVATE WASTE MANAGEMENT PLAN

- RESTAURANTS AND BARS THAT SERVE FOOD MUST PROVIDE ENCLOSURES WITH GREASE CONTAINMENT AREAS IN ACCORDANCE WITH THE C.O.S. MAG DETAILS AND TABLE 2-1.311.
- A MAXIMUM 100 FEET DISTANCE FOR BUILDING SERVICE EXIT TO REFUSE ENCLOSURE.
- PROVIDE A PATH OF TRAVEL FOR THE REFUSE TRUCK ACCOMMODATES A MINIMUM VEHICLE OF TURNING RADIUS OF 45 FEET, AND VEHICLE LENGTH OF 40 FEET.
- REFUSE ENCLOSURE(S) AND APPROACH PAD TO BE LEVEL, WITH A MAXIMUM OF A TWO PERCENT SLOPE.
- ERTICAL CLEARANCE (FROM PUBLIC STREET): 13'-5" (MINIMUM) 14' (RECOMMENDED)
- VERTICAL CLEARANCE (APPROACHING ENCLOSURE): 25'

### REFUSE COLLECTION COMPANY: SOLID WASTE MANAGEMENT

TABLE 2-1.311.1. B.		
USE	REQUIRED NUMBER OF REFUSE ENCLOSURES WITHOUT RECYCLING	REQUIRED NUMBER OF REFUSE ENCLOSURES WITH RECYCLING
Non-Residential Development	1 enclosure for each 20,000 square feet of building space or portion thereof per COS Standard Details #2146-1 or 2147-1	2 enclosures for each 30,000 square feet of building space or portion thereof per COS Standard Details #2147-1 or 2147-2
Apartments & Condominiums	1 enclosure for every 20 units or portion thereof per COS Standard Details #2146-1 or 2147-1	2 enclosures for every 30 units or portion thereof per COS Standard Details #2146-1 or 2147-1

TABLE 2-1.311.1. B.		
USE	REQUIRED NUMBER OF REFUSE ENCLOSURES WITHOUT RECYCLING	REQUIRED NUMBER OF REFUSE ENCLOSURES WITH RECYCLING
Restaurants / Bars	1 enclosure with a grease containment Area per COS Standard Details #2146-2 or 2147-2	1 enclosure with a grease containment Area and 1 enclosure without a containment Area per COS Standard Details #2147-2
Mixed-use Development (Non-Residential with Residential)	1 enclosure for first 10,000 square feet of non-residential building area and the first 10 units or portion thereof per. Where additional non-residential building square footage area and units are provided, 1 enclosure for each additional 20,000 square feet of non-residential floor area, and 1 enclosure additional for each 20 units or portion thereof. Restaurants and Bars that serve food shall provide separate refuse enclosures.	2 enclosures for first 15,000 square feet of non-residential building area and the first 15 units or portion thereof per. Where additional non-residential building square footage area and units are provided, 2 enclosures for each additional 30,000 square feet of non-residential floor area, and 2 enclosures additional for each 30 units or portion thereof. Restaurants and Bars that serve food shall provide separate refuse enclosures.

### NON-RESIDENTIAL:

REFUSE CONTAINERS WITHOUT RECYCLING:  
1 PER 20,000  
FOR 27,780 SF OF NON RESIDENTIAL AREA  
REQUIRED CONTAINERS = 27,780 SF / 20,000 SF  
= 1.39 CONTAINERS

REFUSE CONTAINERS WITH RECYCLING:  
2 PER 30,000  
FOR 27,780 SF OF NON RESIDENTIAL AREA  
REQUIRED CONTAINERS = (27,780 X 2) / 30,000 =  
1.85 CONTAINERS

### RESTAURANT:

REFUSE CONTAINERS WITHOUT RECYCLING:  
1 RESTAURANT/BAR = 1 CONTAINER WITH A GREASE CONTAINMENT AREA

REFUSE CONTAINERS WITH RECYCLING:  
1 RESTAURANT/BAR = 2 (1 WITH GREASE CONTAINMENT + 1 WITHOUT GREASE FOR RECYCLE)

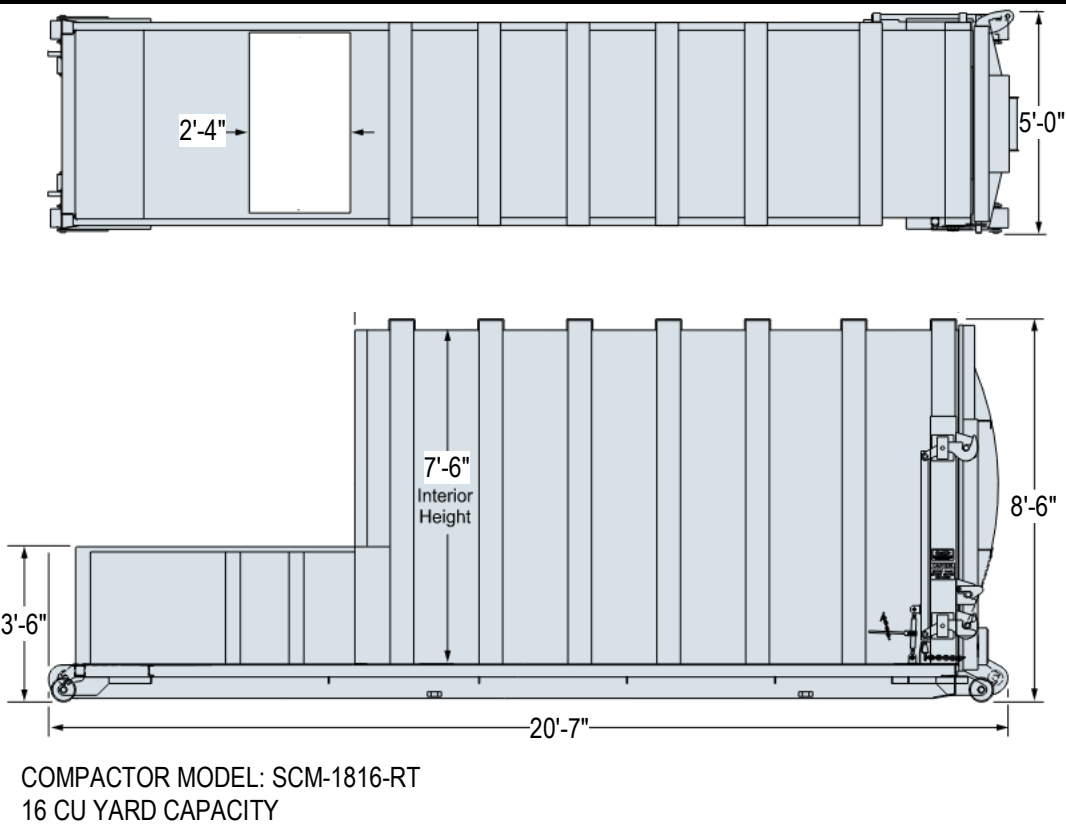
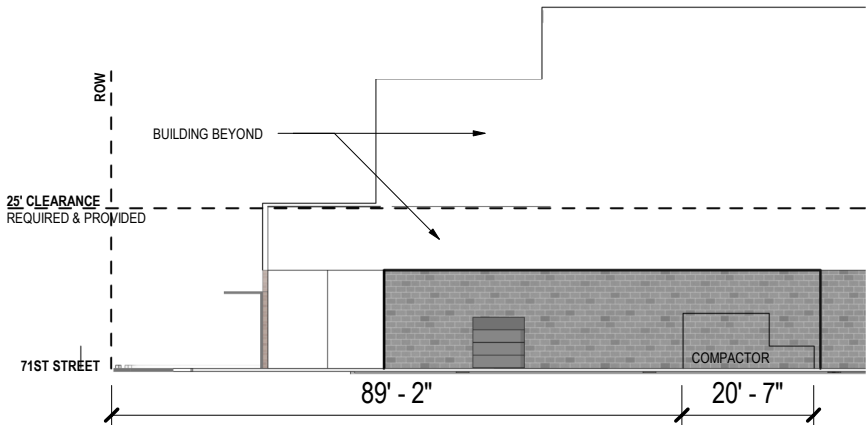
### RESIDENTIAL:

REQUIRED CONTAINERS WITHOUT RECYCLING:  
1 REQUIRED PER 20 UNITS  
FOR 247 UNITS  
CONTAINERS REQUIRED = 247 UNITS / 20 = 12.35

REQUIRED CONTAINERS WITH RECYCLING:  
2 REQUIRED PER 30 UNITS  
FOR 247 UNITS  
CONTAINERS REQUIRED = (247 X 2) / 30 = 16.4

USE	REFUSE	RECYCLE
NON RESIDENTIAL	1.39	.46
RESTAURANT	1 (WITH GREASE CONTAINMENT)	1 (WITHOUT GREASE CONTAINMENT)
RESIDENTIAL	12.35	4.05
TOTAL	14.74 (WITH GREASE CONTAINMENT)	5.51
TOTAL REQUIRED AFTER APPLYING COMPACTION RATIO (4:1)	3.68	5.51

TYPICAL CONTAINER = 4 CU YARD OF NON COMPACTED WASTE PER CONTAINER  
14.74 CONTAINERS X 4 CU YARDS = 60 CU YARDS OF WASTE NEEDING TO BE ACCOUNTED FOR  
WITH A COMPACTION RATIO 4:1, 60 CU YARDS OF WASTE / 4 = 15 CU YARD HORIZONTAL COMPACTOR  
REQUIRED.. 1 COMPACTOR WITH 16 CU YARD CAPACITY + 4 RECYCLE CONTAINERS ARE PROVIDED.



COMPACTOR MODEL: SCM-1816-RT  
16 CU YARD CAPACITY

## SHEET NOTES

- 01 RESIDENTIAL DROP-OFF
- 02 PROPERTY LINE
- 05 REFUSE COMPACTOR
- 07 45' X 12' LOADING AREA
- 09 RAMP DOWN TO PARKING LEVEL BELOW
- 15 VEHICULAR ENTRY GATE
- 16 ADA ACCESS ROUTE
- 27 REFUSE TRUCK PATH
- 31 RECYCLE TRUCK
- 32 ROLL OFF AREA

## EMPIRE GROUP

6617 N Scottsdale Road, Suite 101  
Scottsdale, AZ 85250

## Gensler

2575 E Camelback Road  
Suite 175  
Phoenix, AZ 85016  
United States  
Office Information

Tel 6025234900  
Fax 6025234949

## SYDNOR

4806 N 78th Place  
Scottsdale  
AZ 85251  
United States

Tel 480.206.4593

Date	Description
11/19/2021	Site Plan Submittal
02/23/2022	Site Plan Re-submittal

Seal / Signature

## NOT FOR CONSTRUCTION

Project Name

The Osborn

Project Number

57.8211.000

Description

REFUSE PLAN

Scale

As indicated

# 21.H

© 2021 Gensler