

MATCHLINE SHEET PH1
MATCHLINE SHEET PH4

MATCHLINE SHEET PH1
MATCHLINE SHEET PH4

MATCHLINE SHEET PH1
MATCHLINE SHEET PH2

MATCHLINE SHEET PH1
MATCHLINE SHEET PH2

NOTE:
THE PRE-CURFEW LIGHTING DESIGN HOURS SHALL BE DEFINED AS DUSK TO 10:00 PM, AND THE POST-CURFEW LIGHTING DESIGN HOURS SHALL BE DEFINED AS 10:00 PM TO DAWN. ALL EXTERIOR LIGHTS SHALL BE TURNED OFF DURING POST-CURFEW WITH THE EXCEPTION OF LIGHTS FOR SECURITY PURPOSES.

A PROGRAMMABLE TIMER, AND PHOTOCELLS SHALL CONTROL THE PRE- AND POST-CURFEW LIGHTS; PHOTOCELLS SHALL BE MOUNTED ON THE NORTH SIDE OF BLDG. THE PROGRAMMABLE TIMER MAY CONTAIN A MAXIMUM OF 1-HOUR OVER RIDE WITH AN AUTOMATIC TURN OFF FOR AFTER HOURS, AND SPECIAL EVENTS USE ONLY.

PHOTOMETRIC (PRE-CURFEW) SITE PLAN - WEST

1"=30'-0"



SCOTTSDALE AND THUNDERBIRD

SEC OF SCOTTSDALE ROAD AND THUNDERBIRD ROAD
SCOTTSDALE, AZ

NUMBER	REVISION	DATE

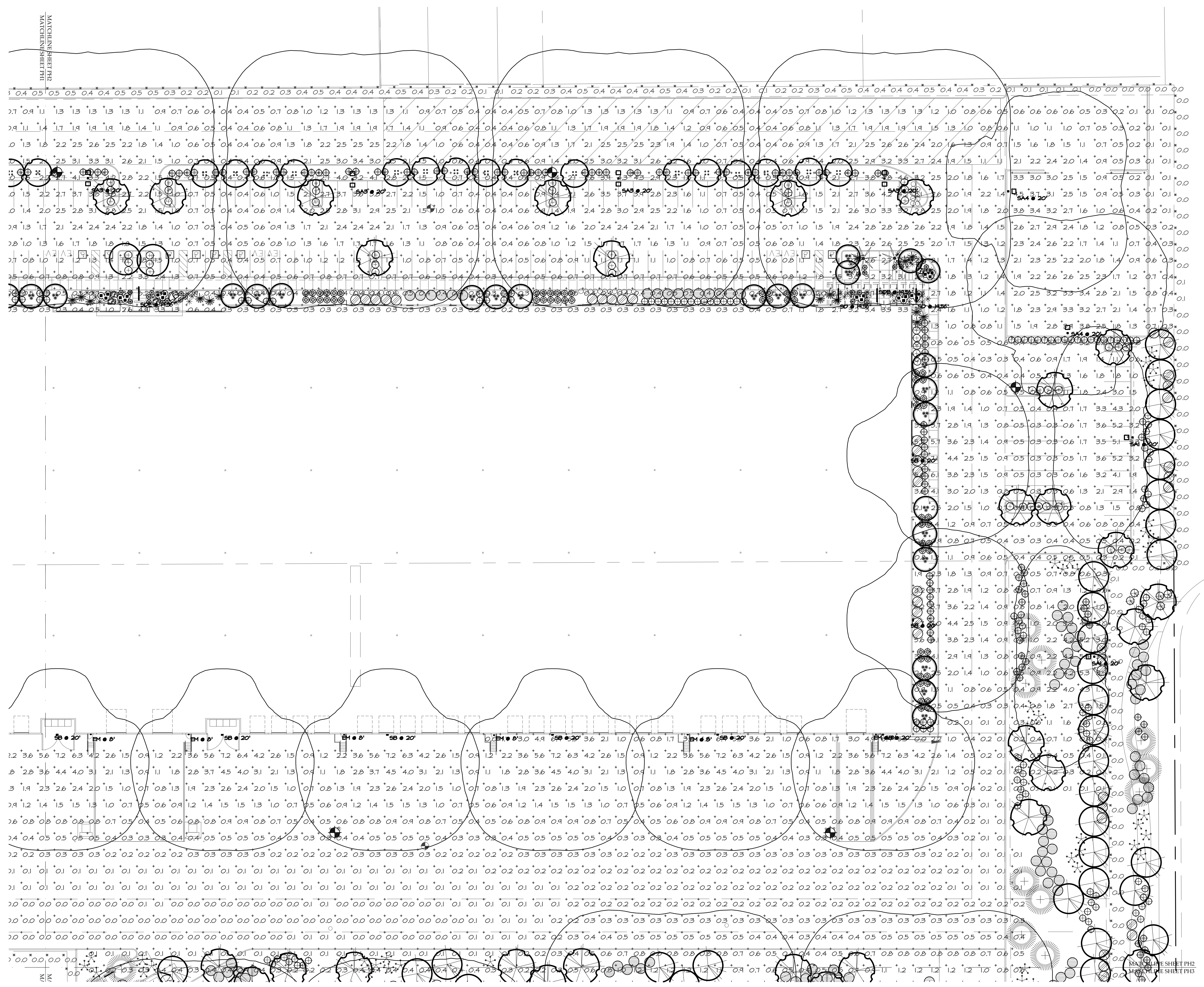
MANUFACTURER'S SHOP DRAWING FOR REFERENCE ONLY

SHEET TITLE:
PHOTOMETRIC (PRE-CURFEW) SITE PLAN - WEST
ISSUE DATE: 05/17/22
DRAWN BY:
CHECKED BY:
PROJECT No.:

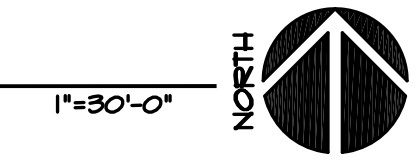
TONY WOO ENGINEERING, INC.
1 W. DEER VALLEY RD.
SUITE 203
PHOENIX, AZ 85027
TEL (602) 279-8092

JOB # 622011
CONTACT: GREG HAMPTON
GREG@TWE.PHXCOXMAIL.COM.

PH1



PHOTOMETRIC (PRE-CURFEW) SITE PLAN - EAST



TONY WOO ENGINEERING, INC.
 1 W. DEER VALLEY RD.
 SUITE 203
 PHOENIX, AZ 85027
 TEL (602) 279-8092

JOB # 622011
 CONTACT: GREG HAMPTON
 GREG@TWE.PHXCOXMAIL.COM.

LGE DESIGNGROUP
 1200 N. 52nd Street • Phoenix, AZ • 85008
 P: 480.966.4001

SCOTTSDALE AND THUNDERBIRD
 SEC OF SCOTTSDALE ROAD AND THUNDERBIRD ROAD
 SCOTTSDALE, AZ

LGE DESIGNBUILD

NUMBER	REVISION	DATE

MANUFACTURER'S SHOP DRAWING FOR REFERENCE ONLY

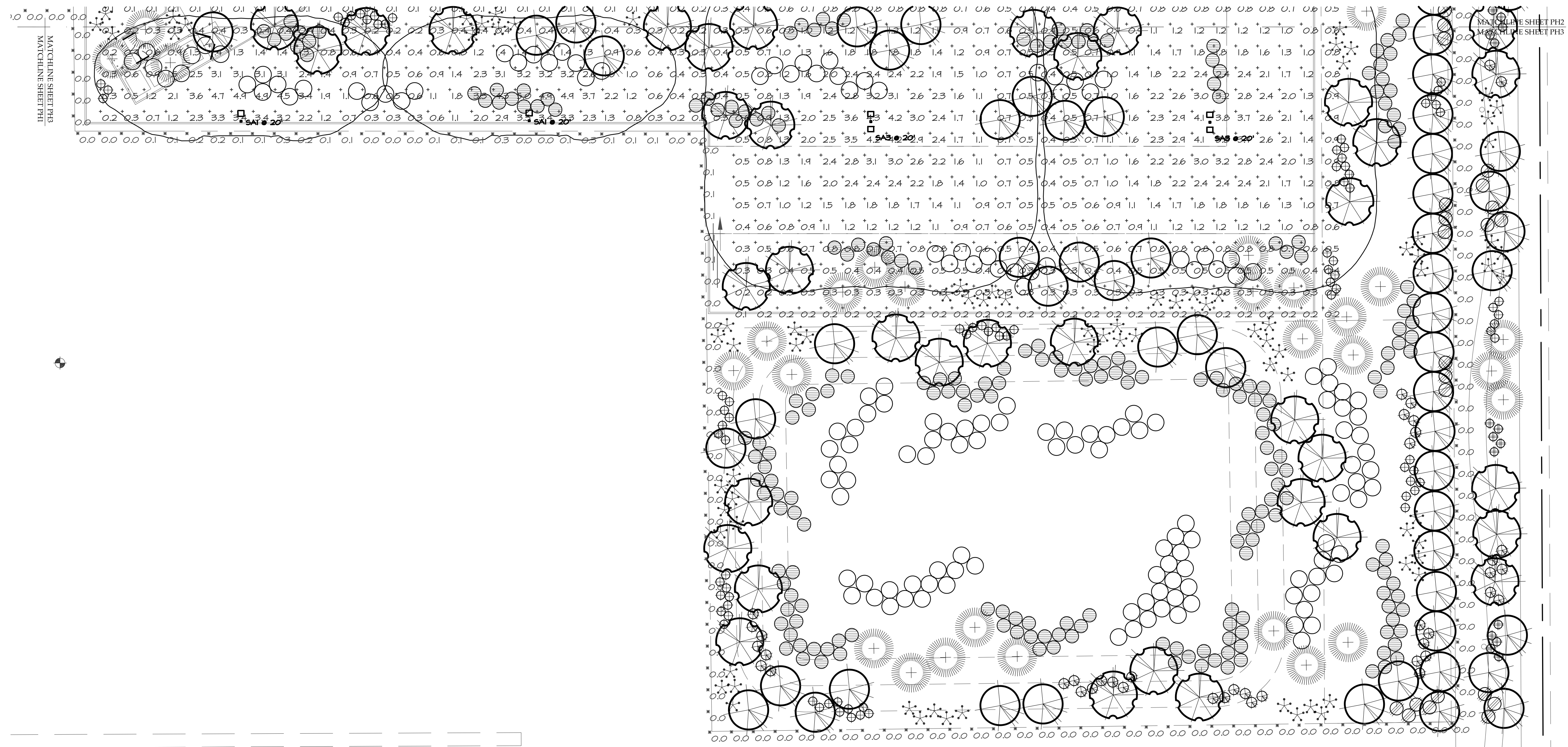
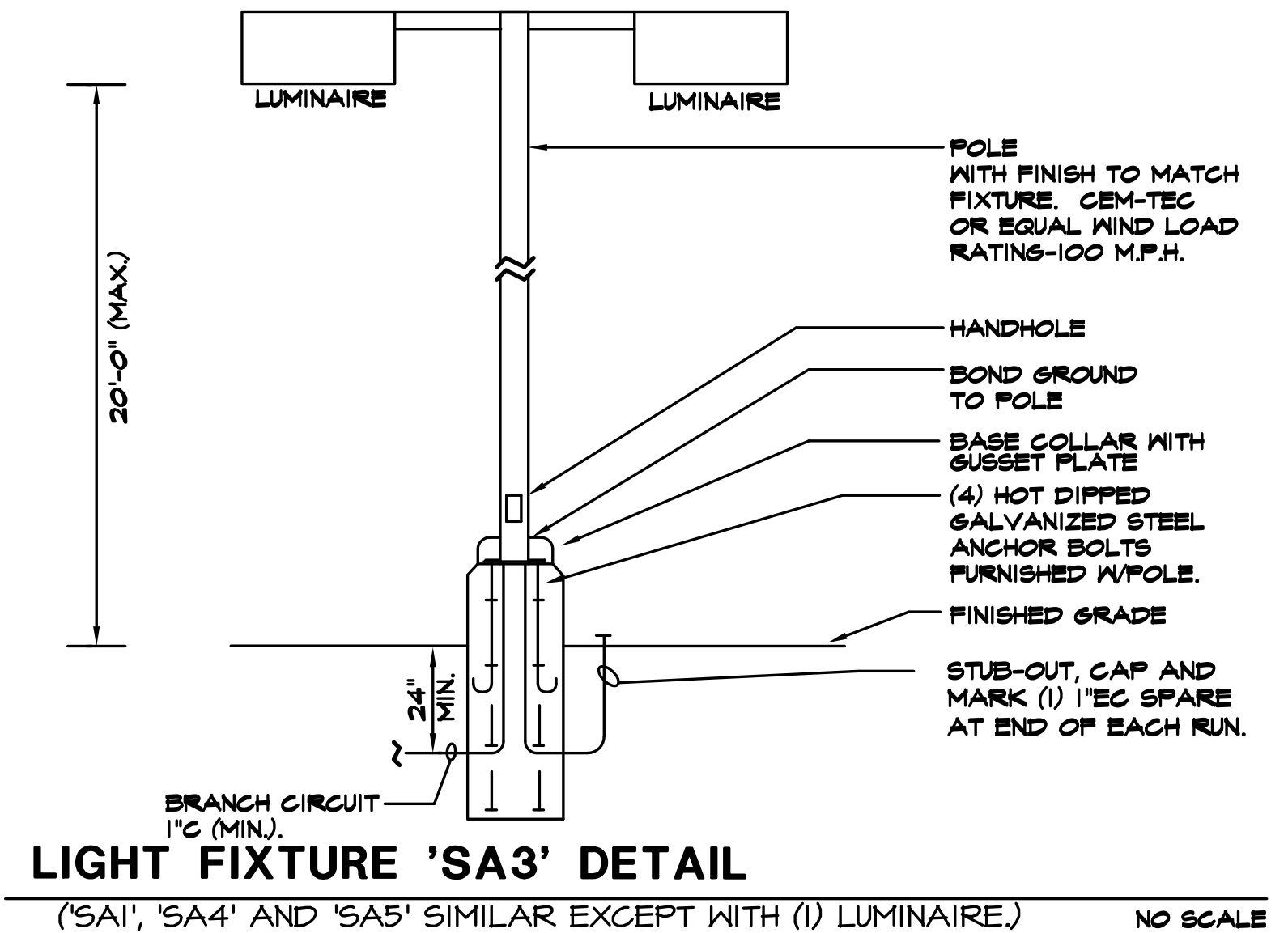
SHEET TITLE:
 PHOTOMETRIC (PRE-CURFEW) SITE PLAN - EAST
 ISSUE DATE: 05/17/22
 DRAWN BY:
 CHECKED BY:
 PROJECT No.:
 SHEET:

PH2

05/17/22 - DESIGN REVIEW SUBMITTAL

Statistics						
Description	Symbol	Avg	Max	Min	Max/Min	Avg/Min
SITE - FC @ GRADE	+	1.3 fc	8.0 fc	0.0 fc	N/A	N/A
PROPERTY LINE - FC @ 8' AFG	X	0.1 fc	0.7 fc	0.0 fc	N/A	N/A

Schedule										
Symbol	Label	Quantity	Manufacturer	Catalog Number	Description	Lamp	Filename	Lumens Per Lamp	Light Loss Factor	Wattage
EM	EM	11	Lithonia Lighting	AFF OEL (FINISH) UVOLT LTP SDRT FCT	AFF premium FCT (Forward Throw)	LED	AFF_FCT.ies	451	0	5.48
SA1	SA1	4	Lithonia Lighting	DSX1 LED P5 30K BLC MVOLT SPA (FINISH) / SSS 17.5' WITH 2.5' BASE	DSX1 LED P5 30K BLC MVOLT	3000K LED	DSX1_LED_P5_30K_BLC_MVOLT.ies	12047	0.91	138
SA3	SA3	9	Lithonia Lighting	(2) DSX1 LED P5 30K T5W MVOLT SPA (FINISH) / SSS 17.5' WITH 2.5' BASE	TWIN-HEAD DSX1 LED P5 30K T5W MVOLT	3000K LED	DSX1_LED_P5_30K_T5W_MVOLT.ies	15156	0.91	276
SA4	SA4	3	Lithonia Lighting	DSX1 LED P5 30K TFTM MVOLT SPA (FINISH) / SSS 17.5' WITH 2.5' BASE	DSX1 LED P5 30K TFTM MVOLT	3000K LED	DSX1_LED_P5_30K_TFTM_MVOLT.ies	14694	0.91	138
SA5	SA5	5	Lithonia Lighting	DSX1 LED P5 30K T2M MVOLT SPA (FINISH) / SSS 17.5' WITH 2.5' BASE	DSX1 LED P5 30K T2M MVOLT	3000K LED	DSX1_LED_P5_30K_T2M_MVOLT.ies	14663	0.91	138
SB	SB	15	Lithonia Lighting	WDGE4 LED P3 30K 80CRI RFT MVOLT SRM (FINISH)	WDGE4 LED WITH P3 - PERFORMANCE PACKAGE, 3000K, 70CRI, FORWARD THROW OPTIC	3000K LED	WDGE4_LED_P3_70CRI_RFT_30K.ies	16889	0.91	124.86
SC	SC	33	Lithonia Lighting	DMW2 2000LM WD AFL MVOLT GZ10 30K 80CRI	DMW2 2000LM WD AFL MVOLT GZ10 30K 80CRI (GLEDS)	3000K LED	DMW2_2000LM_WD_AFL_MVOLT_30K_80CRI.ies	2100	0.91	18.78
SD	SD	4	Pinnacle Architectural Lighting	EX3 WET N 830HO 8' (POSITION) S U FSD 1 0 (FINISH)	8' SURFACE MOUNTED LINEAR-HIGH OUTPUT	3000K LED	EX3-WET-N-830HO-4.IES	22	0.91	69.2
SDE	SDE	3	Pinnacle Architectural Lighting	EX3 WET N 830HO 8' (POSITION) S U FSD 1 4'E (FINISH)	8' SURFACE MOUNTED LINEAR-HIGH OUTPUT WIEM BATTERY PACK	3000K LED	EX3-WET-N-830HO-4.IES	22	0.91	69.2



TONY WOO ENGINEERING, INC.
 1 W. DEER VALLEY RD.
 SUITE 203
 PHOENIX, AZ 85027
 TEL (602) 279-8092

JOB # 622011

CONTACT: GREG HAMPTON
 GREG@TWE.PHXCOXMAIL.COM.

MANUFACTURER'S SHOP DRAWING FOR REFERENCE ONLY

SHEET TITLE: PHOTOMETRIC (PRE-CURFEW) SITE PLAN - SOUTH EAST
 ISSUE DATE: 05/17/22
 DRAWN BY:
 CHECKED BY:
 PROJECT No.:
 SHEET: **PH3**

NUMBER	REVISION	DATE

SCOTTSDALE AND THUNDERBIRD

LGE DESIGNGROUP

1200 N. 52nd Street • Phoenix, AZ • 85008
 P: 480.966.4001

SCOTTSDALE AND THUNDERBIRD
 SEC OF SCOTTSDALE ROAD AND THUNDERBIRD ROAD
 SCOTTSDALE, AZ

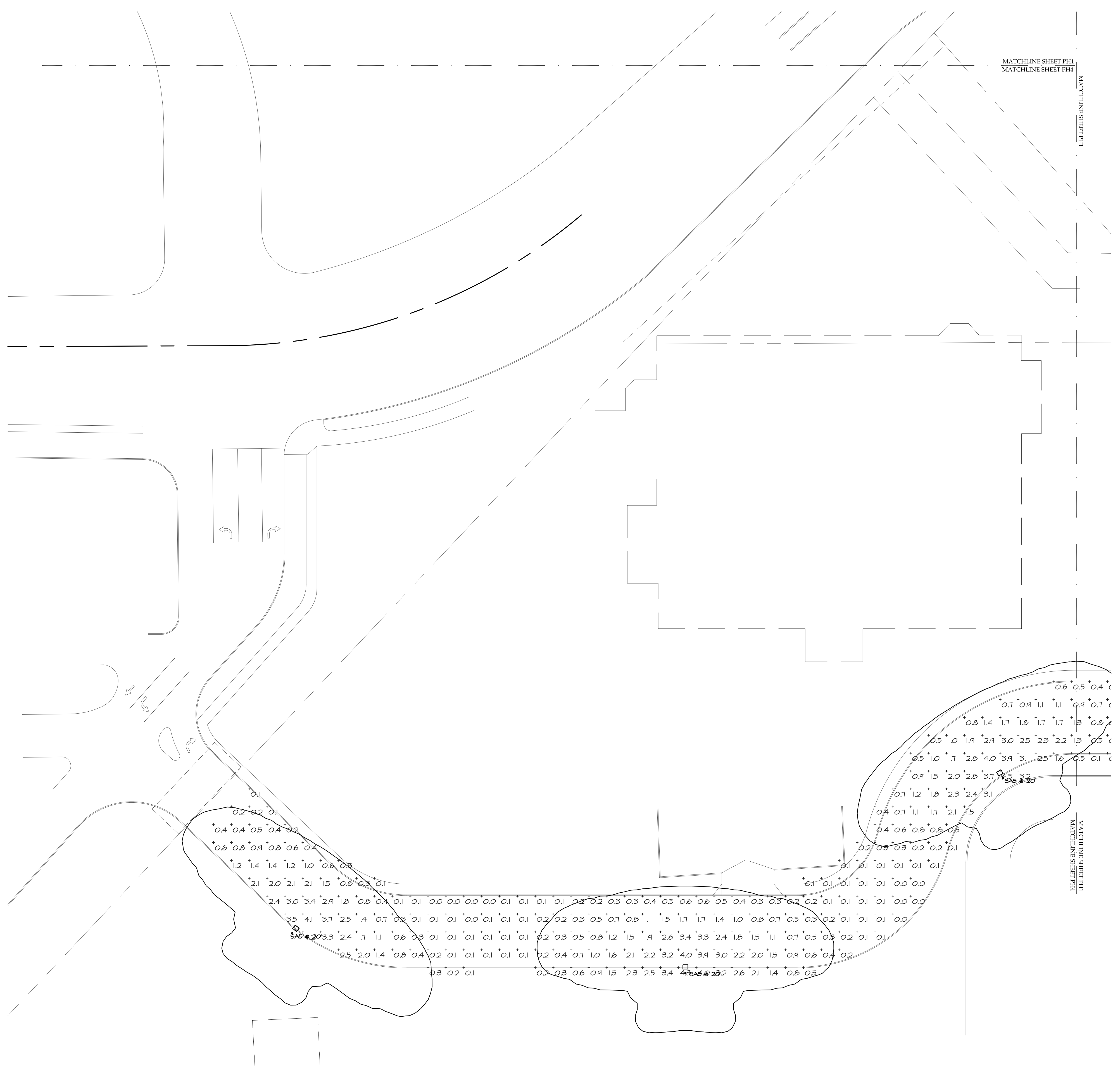
NUMBER	REVISION	DATE

**MANUFACTURER'S
 SHOP DRAWING
 FOR REFERENCE
 ONLY**

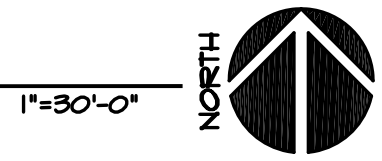
SHEET TITLE:
 PHOTOMETRIC (PRE-CURFEW) SITE
 PLAN - SOUTH WEST
 ISSUE DATE: 05/17/22
 DRAWN BY:
 CHECKED BY:
 PROJECT No.:
 SHEET:

PH4

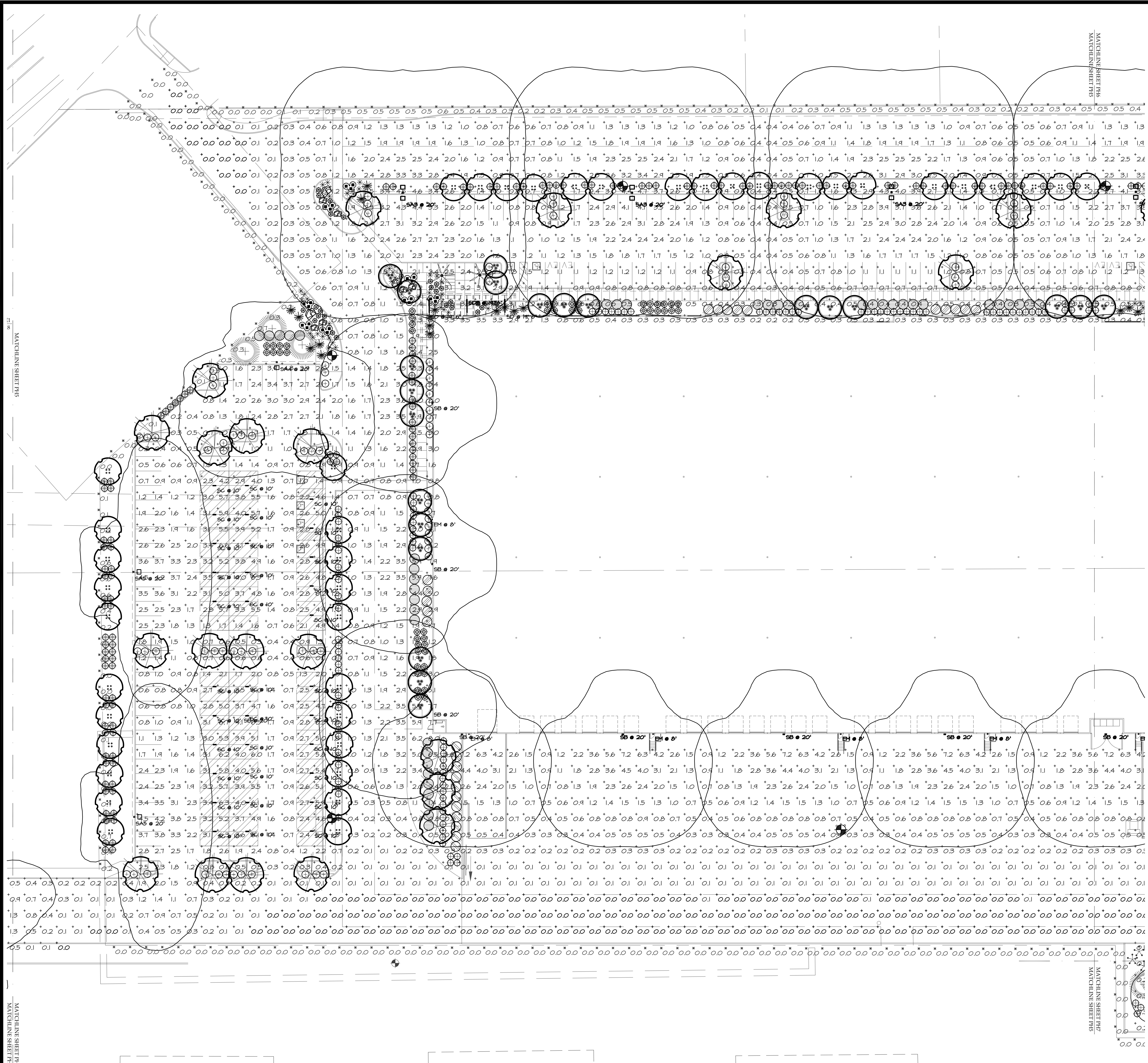
05/17/22 - DESIGN REVIEW SUBMITTAL



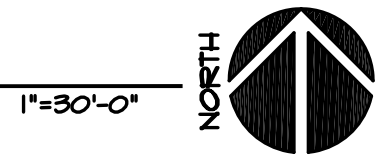
PHOTOMETRIC (PRE-CURFEW) SITE PLAN - SOUTH WEST



TONY WOO ENGINEERING, INC.
 1 W. DEER VALLEY RD.
 SUITE 203
 PHOENIX, AZ 85027
 TEL (602) 279-8092
 JOB # 622011
 CONTACT: GREG HAMPTON
 GREG@TWE.PHXCOXMAIL.COM.



PHOTOMETRIC (POST-CURFEW) SITE PLAN - WEST



TONY WOO ENGINEERING, INC.
 1 W. DEER VALLEY RD.
 SUITE 203
 PHOENIX, AZ 85027
 TEL (602) 279-8092

JOB # 622011
 CONTACT: GREG HAMPTON
 GREG@TWE.PHXCOXMAIL.COM.

LGE DESIGNGROUP
 1200 N. 52nd Street • Phoenix, AZ • 85008
 P: 480.966.4001

SCOTTSDALE AND THUNDERBIRD
 SEC OF SCOTTSDALE ROAD AND THUNDERBIRD ROAD
 SCOTTSDALE, AZ

LGE DESIGNBUILD

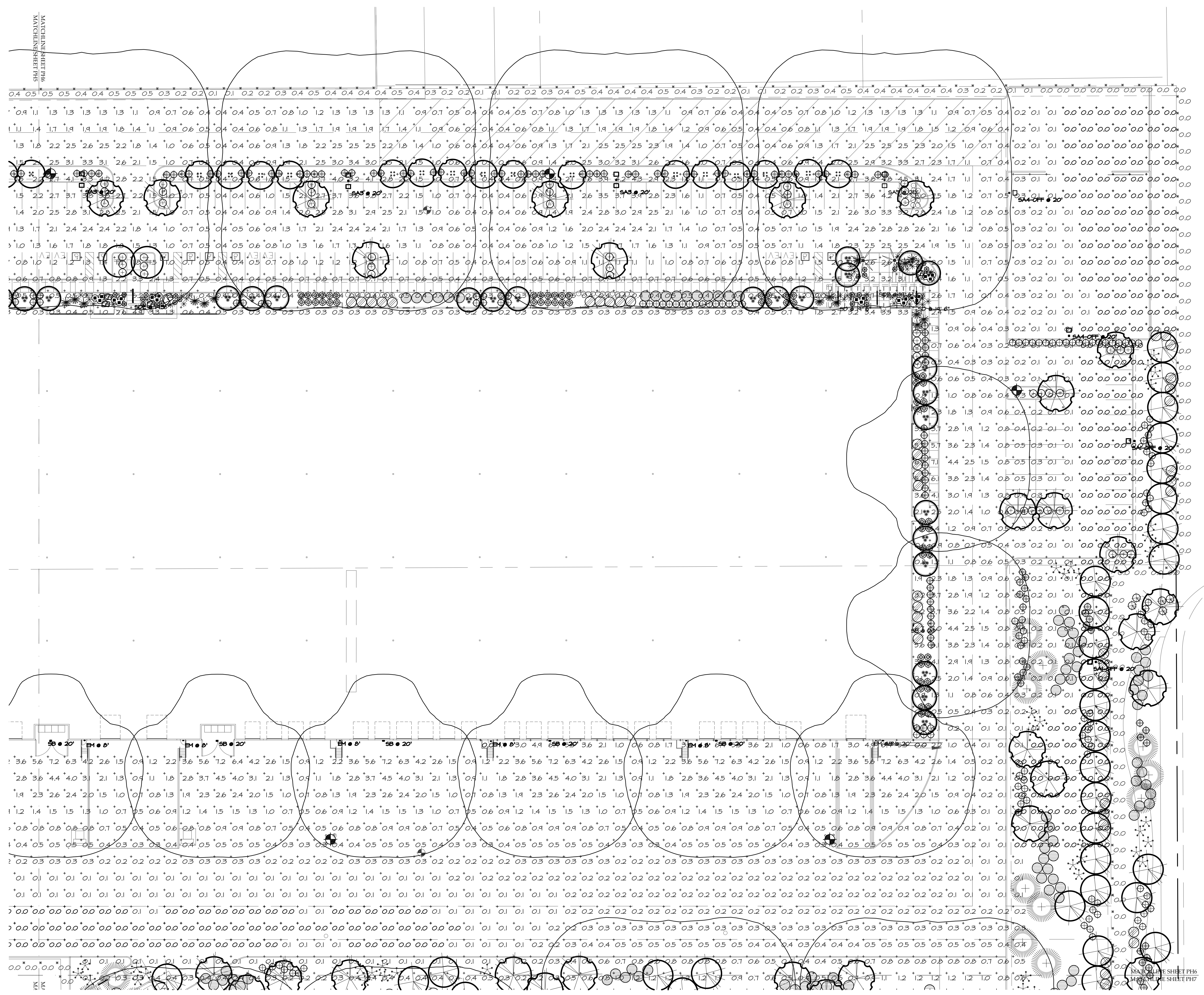
NUMBER	REVISION	DATE

MANUFACTURER'S SHOP DRAWING FOR REFERENCE ONLY

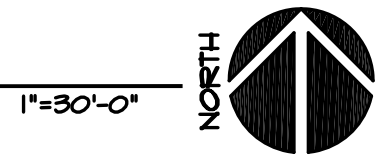
SHEET TITLE: PHOTOMETRIC (POST-CURFEW) SITE PLAN - WEST
 ISSUE DATE: 05/17/22
 DRAWN BY:
 CHECKED BY:
 PROJECT No.:

SHEET: **PH5**

05/17/22 - DESIGN REVIEW SUBMITTAL



PHOTOMETRIC (POST-CURFEW) SITE PLAN - EAST



TONY WOO ENGINEERING, INC.
 1 W. DEER VALLEY RD.
 SUITE 203
 PHOENIX, AZ 85027
 TEL (602) 279-8092

JOB # 622011
 CONTACT: GREG HAMPTON
 GREG@TWE.PHXCOXMAIL.COM.

LGE DESIGNGROUP
 1200 N. 52nd Street • Phoenix, AZ • 85008
 P. 480.966.4001

SCOTTSDALE AND THUNDERBIRD
 SEC OF SCOTTSDALE ROAD AND THUNDERBIRD ROAD
 SCOTTSDALE, AZ

LGE DESIGNBUILD

NUMBER	REVISION	DATE

MANUFACTURER'S SHOP DRAWING FOR REFERENCE ONLY

SHEET TITLE:
 PHOTOMETRIC (POST-CURFEW)
 SITE PLAN - EAST
 ISSUE DATE: 05/17/22

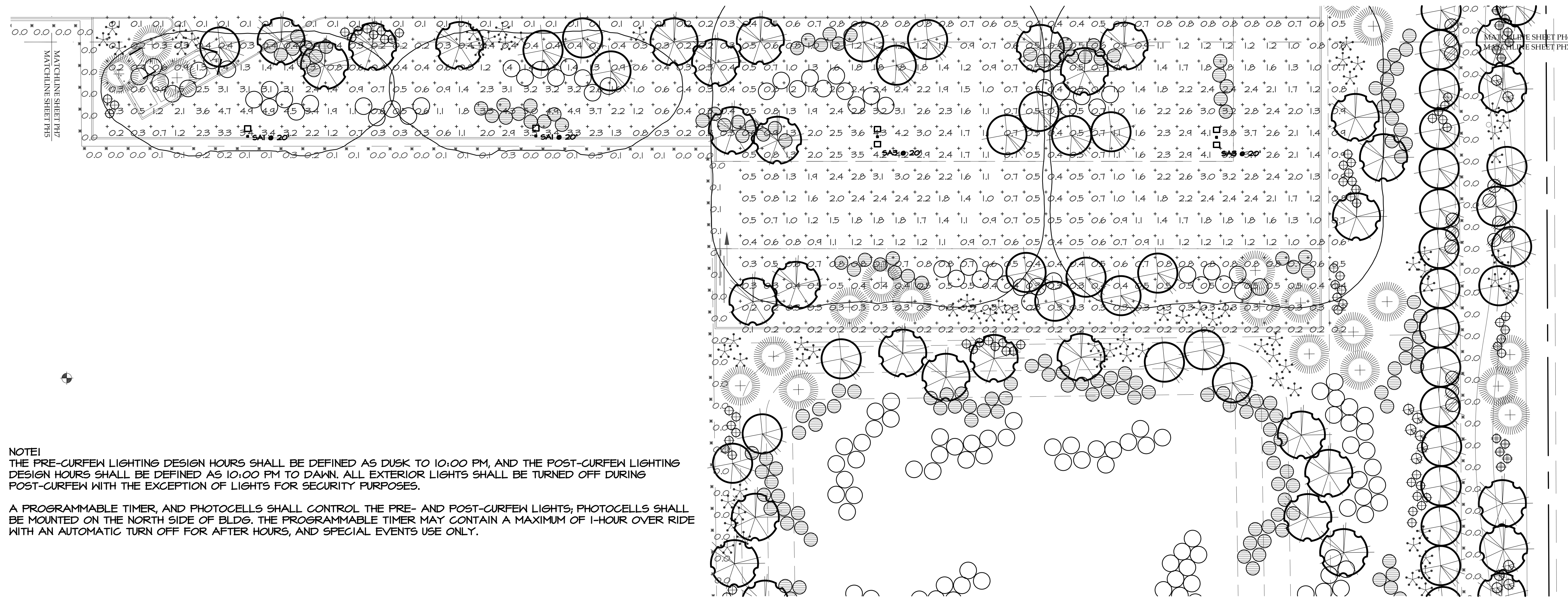
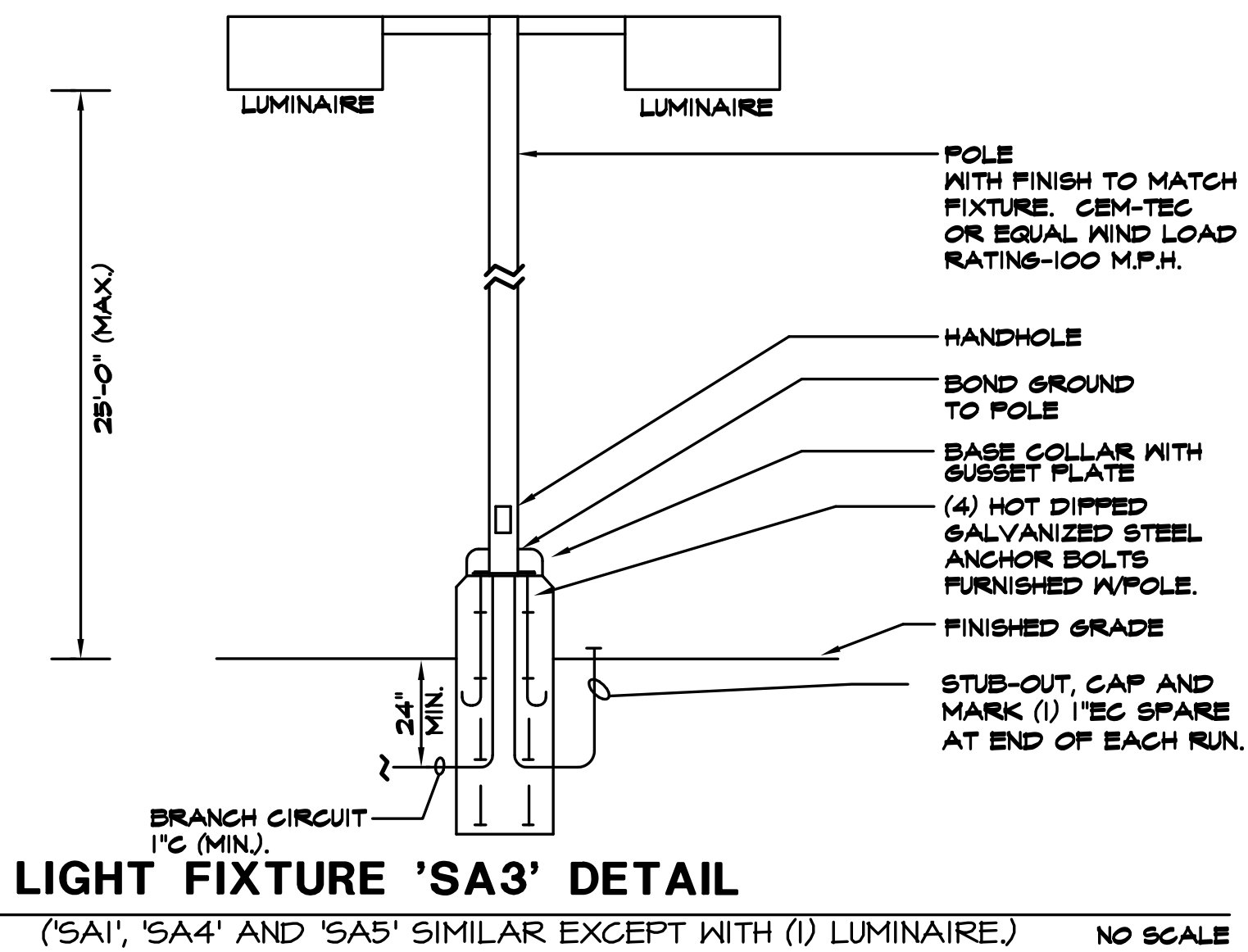
DRAWN BY:
 CHECKED BY:
 PROJECT No.:

SHEET: **PH6**

05/17/22 - DESIGN REVIEW SUBMITTAL

Statistics						
Description	Symbol	Avg	Max	Min	Max/Min	Avg/Min
SITE - FC @ GRADE	+	1.2 fc	8.0 fc	0.0 fc	N/A	N/A
PROPERTY LINE - FC @ 6' AFG	X	0.1 fc	0.7 fc	0.0 fc	N/A	N/A

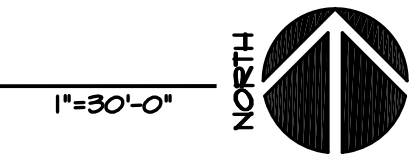
Schedule										
Symbol	Label	Quantity	Manufacturer	Catalog Number	Description	Lamp	Filename	Lumens Per Lamp	Light Loss Factor	Wattage
EM	EM	11	Lithonia Lighting	AFF OEL (FINISH) UVOLT LTP SORT FCT	AFF premium FCT (Forward Throw)	LED	AFF_FCT.ies	451	0	5.48
SA1	SA1	2	Lithonia Lighting	DSX1 LED P5 30K BLC MVOLT SPA (FINISH) / SSS 17.5' WITH 2.5' BASE	DSX1 LED P5 30K BLC MVOLT	3000K LED	DSX1_LED_P5_30K_BLC_MVOLT.ies	12047	0.91	138
SA1-OFF	SA1-OFF	2	Lithonia Lighting	DSX1 LED P5 30K BLC MVOLT SPA (FINISH) / SSS 17.5' WITH 2.5' BASE	DSX1 LED P5 30K BLC MVOLT TURNED OFF FOR POST-CURFEW	3000K LED	DSX1_LED_P5_30K_BLC_MVOLT.ies	12047	0	138
SA3	SA3	9	Lithonia Lighting	(2) DSX1 LED P5 30K TSW MVOLT SPA (FINISH) / SSS 17.5' WITH 2.5' BASE	TWIN-HEAD DSX1 LED P5 30K TSW MVOLT	3000K LED	DSX1_LED_P5_30K_TSW_MVOLT.ies	15156	0.91	276
SA4	SA4	1	Lithonia Lighting	DSX1 LED P5 30K TFFM MVOLT SPA (FINISH) / SSS 17.5' WITH 2.5' BASE	DSX1 LED P5 30K TFFM MVOLT	3000K LED	DSX1_LED_P5_30K_TFFM_MVOLT.ies	14694	0.91	138
SA4-OFF	SA4-OFF	2	Lithonia Lighting	DSX1 LED P5 30K TFFM MVOLT SPA (FINISH) / SSS 17.5' WITH 2.5' BASE	DSX1 LED P5 30K TFFM MVOLT TURNED OFF FOR POST-CURFEW	3000K LED	DSX1_LED_P5_30K_TFFM_MVOLT.ies	14694	0	138
SA5	SA5	5	Lithonia Lighting	DSX1 LED P5 30K T2M MVOLT SPA (FINISH) / SSS 17.5' WITH 2.5' BASE	DSX1 LED P5 30K T2M MVOLT	3000K LED	DSX1_LED_P5_30K_T2M_MVOLT.ies	14663	0.91	138
SA5-OFF	SA5-OFF	15	Lithonia Lighting	WDG64 LED P3 30K 80CRI RFT MVOLT SRM (FINISH)	WDG64 LED WITH P3-PERFORMANCE PACKAGE, 3000K 70CRI, FORWARD THROW OPTIC	3000K LED	WDG64_LED_P3_70CRI_RFT_30K.ies	16889	0.91	124.86
SB	SB	33	Lithonia Lighting	DMW2 2000LM WD AFL MVOLT G210 30K 80CRI	DMW2 L24 2000LM WD AFL MVOLT G21 30K 80CRI (GLEDS)	3000K LED	DMW2_2000LM_WD_AFL_MVOLT_30K_80CRI.ies	2100	0.91	18.78
SC	SC	4	Pinnacle Architectural Lighting	EX3 WET N 830HO 8' (POSITION) S U FSD 1 0 (FINISH)	8' SURFACE MOUNTED LINEAR-HIGH OUTPUT	3000K LED	EX3-WET-N-830HO-4.IES	22	0.91	69.2
SD	SD	3	Pinnacle Architectural Lighting	EX3 WET N 830HO 8' (POSITION) S U FSD 1 4 E (FINISH)	8' SURFACE MOUNTED LINEAR-HIGH OUTPUT WIEM BATTERY PACK	3000K LED	EX3-WET-N-830HO-4.IES	22	0.91	69.2



NOTE!
 THE PRE-CURFEW LIGHTING DESIGN HOURS SHALL BE DEFINED AS DUSK TO 10:00 PM, AND THE POST-CURFEW LIGHTING DESIGN HOURS SHALL BE DEFINED AS 10:00 PM TO DAWN. ALL EXTERIOR LIGHTS SHALL BE TURNED OFF DURING POST-CURFEW WITH THE EXCEPTION OF LIGHTS FOR SECURITY PURPOSES.

A PROGRAMMABLE TIMER, AND PHOTOCELLS SHALL CONTROL THE PRE- AND POST-CURFEW LIGHTS; PHOTOCELLS SHALL BE MOUNTED ON THE NORTH SIDE OF BLDGS. THE PROGRAMMABLE TIMER MAY CONTAIN A MAXIMUM OF 1-HOUR OVER RIDE WITH AN AUTOMATIC TURN OFF FOR AFTER HOURS, AND SPECIAL EVENTS USE ONLY.

PHOTOMETRIC (POST-CURFEW) SITE PLAN - SOUTH EAST



TONY WOO ENGINEERING, INC.
 1 W. DEER VALLEY RD.
 SUITE 203
 PHOENIX, AZ 85027
 TEL (602) 279-8092

JOB # 622011

CONTACT: GREG HAMPTON
 GREG@TWE.PHX.COXMAIL.COM.

MANUFACTURER'S SHOP DRAWING FOR REFERENCE ONLY

SHEET TITLE:
 PHOTOMETRIC (POST-CURFEW) SITE PLAN - SOUTH EAST

ISSUE DATE: 05/17/22

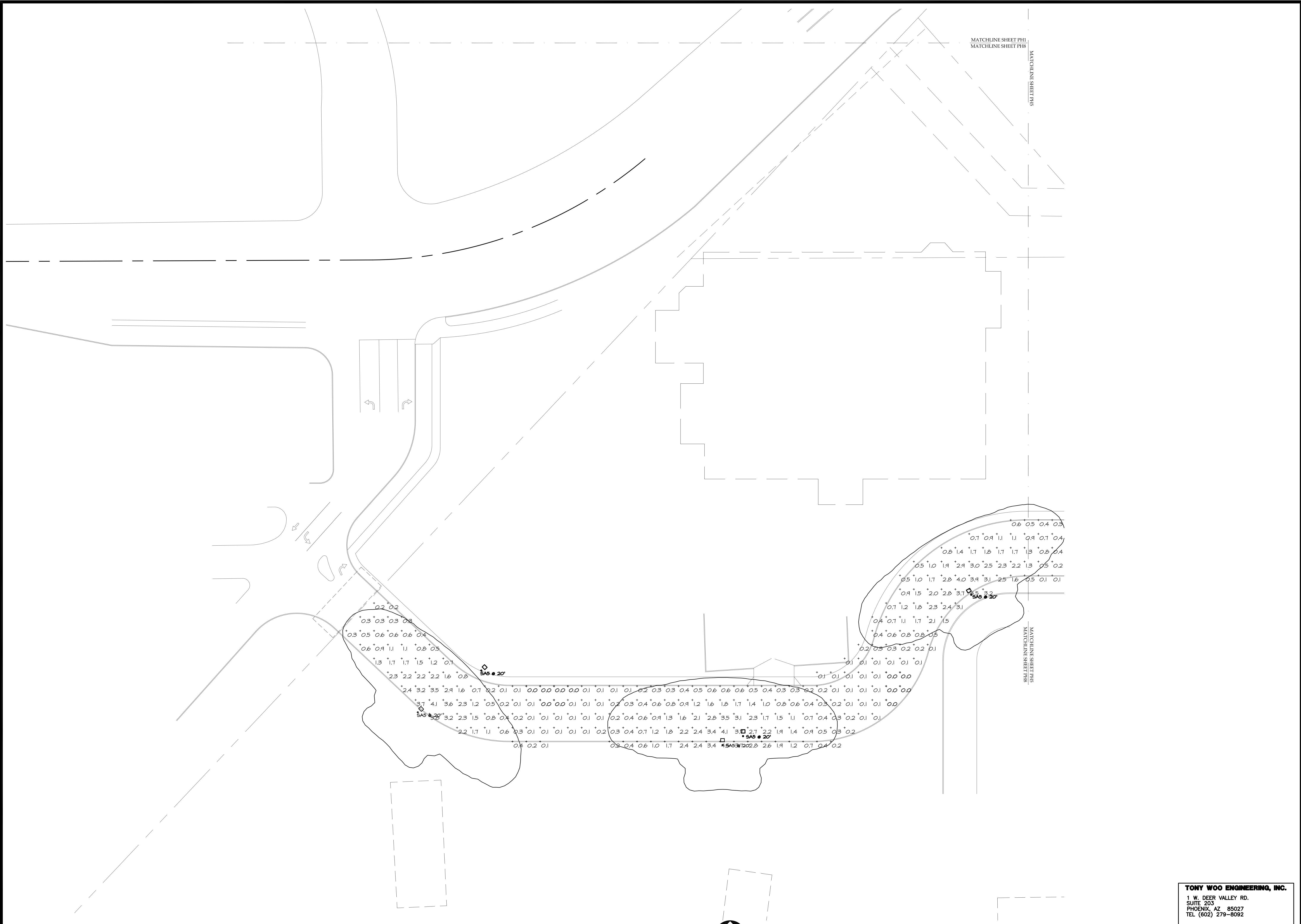
DRAWN BY:

CHECKED BY:

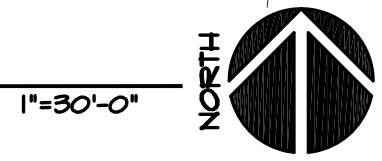
PROJECT No.:

SHEET:

PH7



PHOTOMETRIC (POST-CURFEW) SITE PLAN - SOUTH WEST



TONY WOO ENGINEERING, INC.
 1 W. DEER VALLEY RD.
 SUITE 203
 PHOENIX, AZ 85027
 TEL (602) 279-8092

JOB # 622011
 CONTACT: GREG HAMPTON
 GREG@TWE.PHXCOXMAIL.COM.

LGE DESIGNGROUP
 1200 N. 52nd Street • Phoenix, AZ • 85008
 P: 480.966.4001

SCOTTSDALE AND THUNDERBIRD
 SEC OF SCOTTSDALE ROAD AND THUNDERBIRD ROAD
 SCOTTSDALE, AZ

LGE DESIGNBUILD

NUMBER	REVISION	DATE

MANUFACTURER'S SHOP DRAWING FOR REFERENCE ONLY

SHEET TITLE:
 PHOTOMETRIC (POST-CURFEW) SITE PLAN - SOUTH WEST
 ISSUE DATE: 05/17/22
 DRAWN BY:
 CHECKED BY:
 PROJECT No.:
 SHEET:

PH8

05/17/22 - DESIGN REVIEW SUBMITTAL