

PRELIMINARY PLAT

FOR

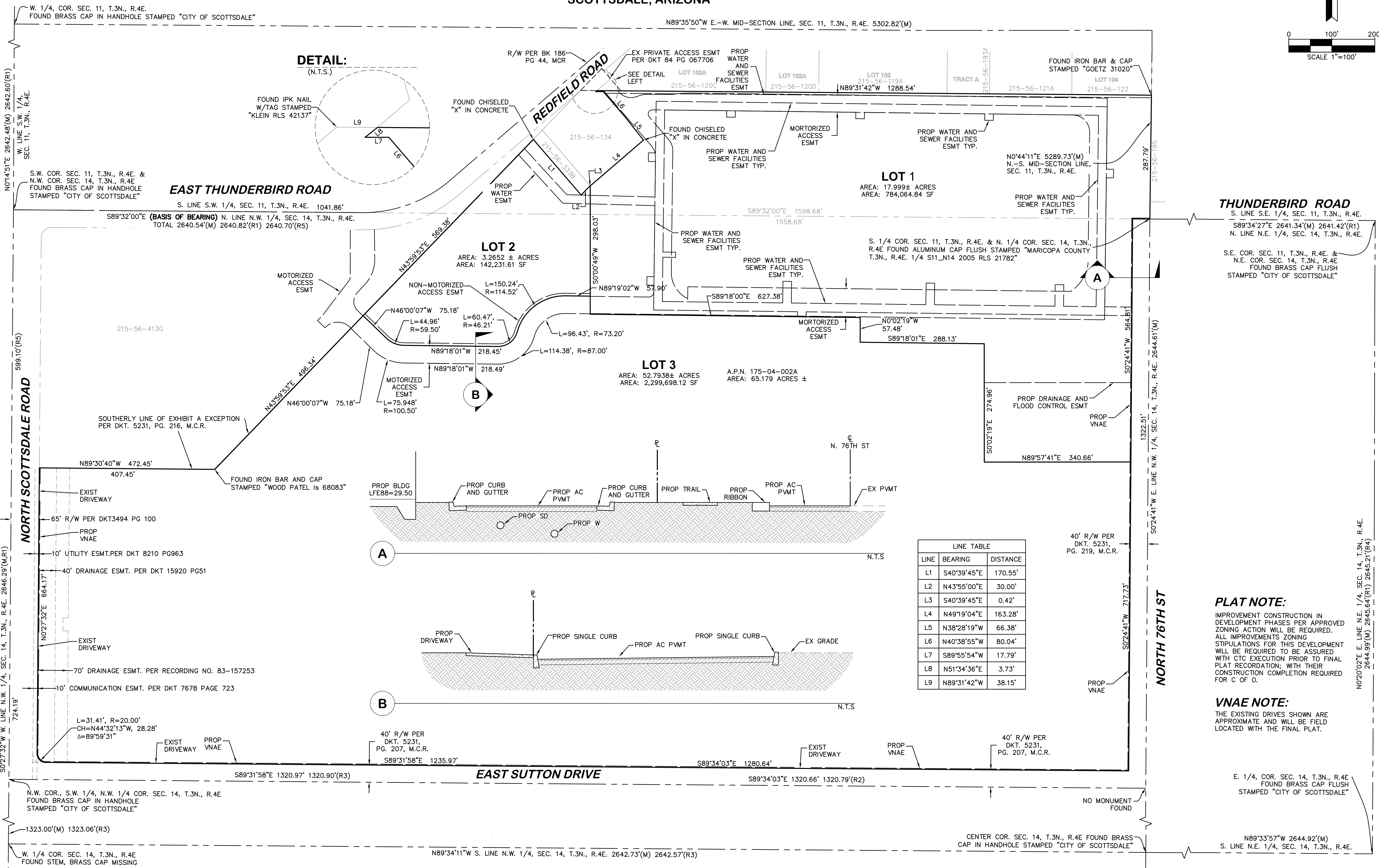
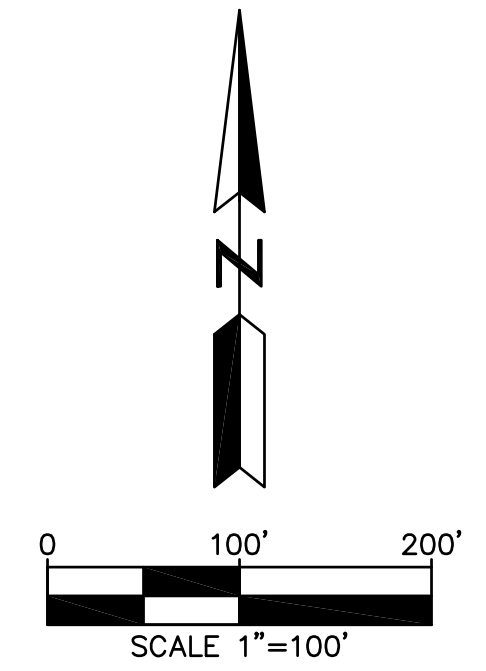
SCOTTSDALE AND THUNDERBIRD

SCOTTSDALE AND THUNDERBIRD

SCOTTSDALE, ARIZONA

LEGEND

- CENTERLINE
- PROPERTY LINE
- RIGHT-OF-WAY LINE
- EASEMENT LINE



PLAT NOTE:
 IMPROVEMENT CONSTRUCTION IN DEVELOPMENT PHASES PER APPROVED ZONING ACTION WILL BE REQUIRED. ALL IMPROVEMENTS ZONING STIPULATIONS FOR THIS DEVELOPMENT WILL BE REQUIRED TO BE ASSURED WITH CTC EXECUTION PRIOR TO FINAL PLAT RECORDATION; WITH THEIR CONSTRUCTION COMPLETION REQUIRED FOR C OF O.

VNAE NOTE:
 THE EXISTING DRIVES SHOWN ARE APPROXIMATE AND WILL BE FIELD LOCATED WITH THE FINAL PLAT.

NO.	DATE	REVISION	BY

DESIGN BY: **MG**
 DRAWN BY: **DC**
 CHECKED BY: **LT**

CIVIL AND SURVEY

HUNTER

ENGINEERING

10450 NORTH 74TH STREET,
 SUITE 200
 SCOTTSDALE, AZ 85258
 T 480 991 3985
 F 480 991 3986



PRELIMINARY PLAT
FOR
SCOTTSDALE AND THUNDERBIRD
SEC OF SCOTTSDALE AND THUNDERBIRD
SCOTTSDALE, ARIZONA

CONTACT ARIZONA BIT AT LEAST 7 DAYS BEFORE ANY EXCAVATION WORKING DATES BEFORE YOU BEGIN EXCAVATION

ARIZONA811
 CALL 811 OR CLICK ARIZONA811.COM

THESE PLANS ARE NOT APPROVED FOR CONSTRUCTION WITHOUT AN APPROVED SIGNATURE FROM THE GOVERNING MUNICIPALITY.

PROJECT NAME:
SCOTTSDALE AND THUNDERBIRD

HE NO.: LGEC308
SCALE: 1"=100'

SHEET:
1