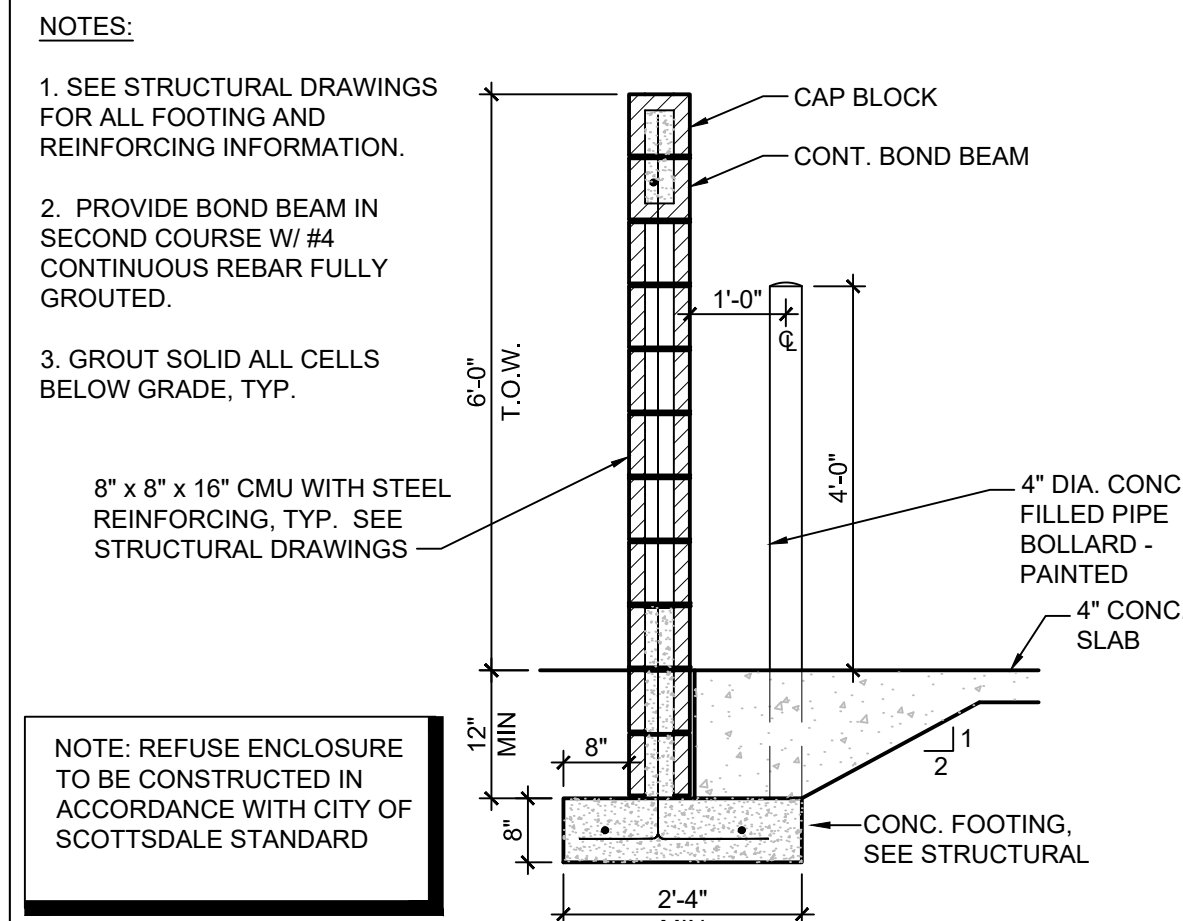
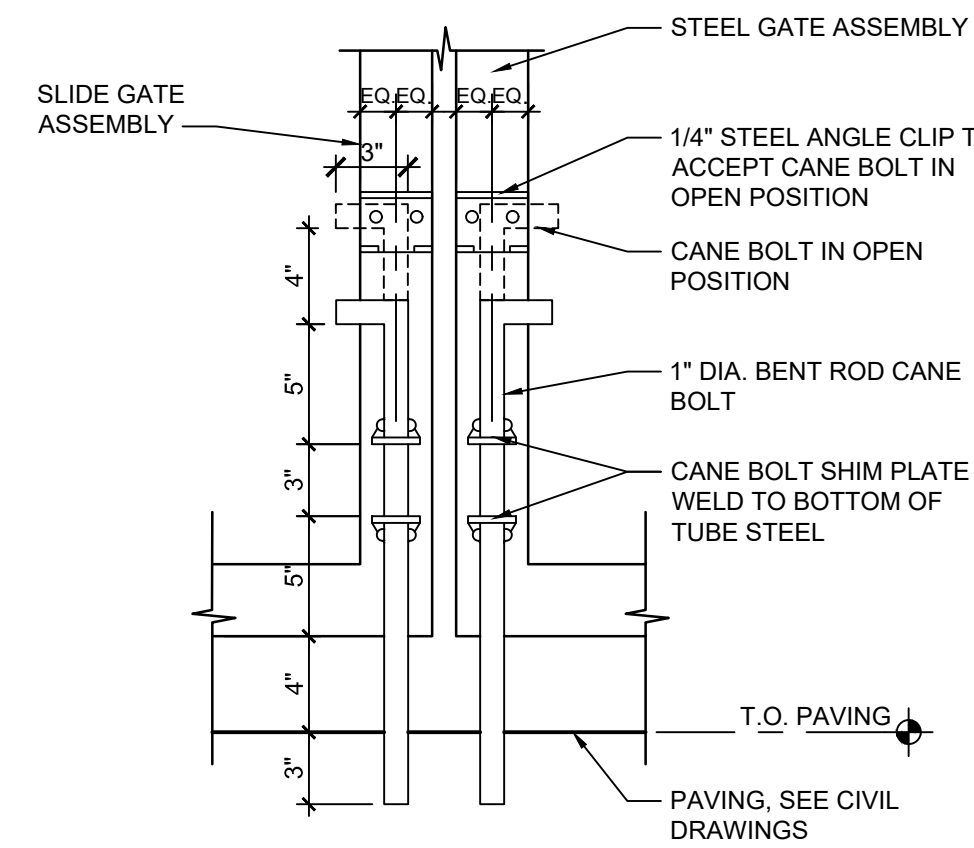


17



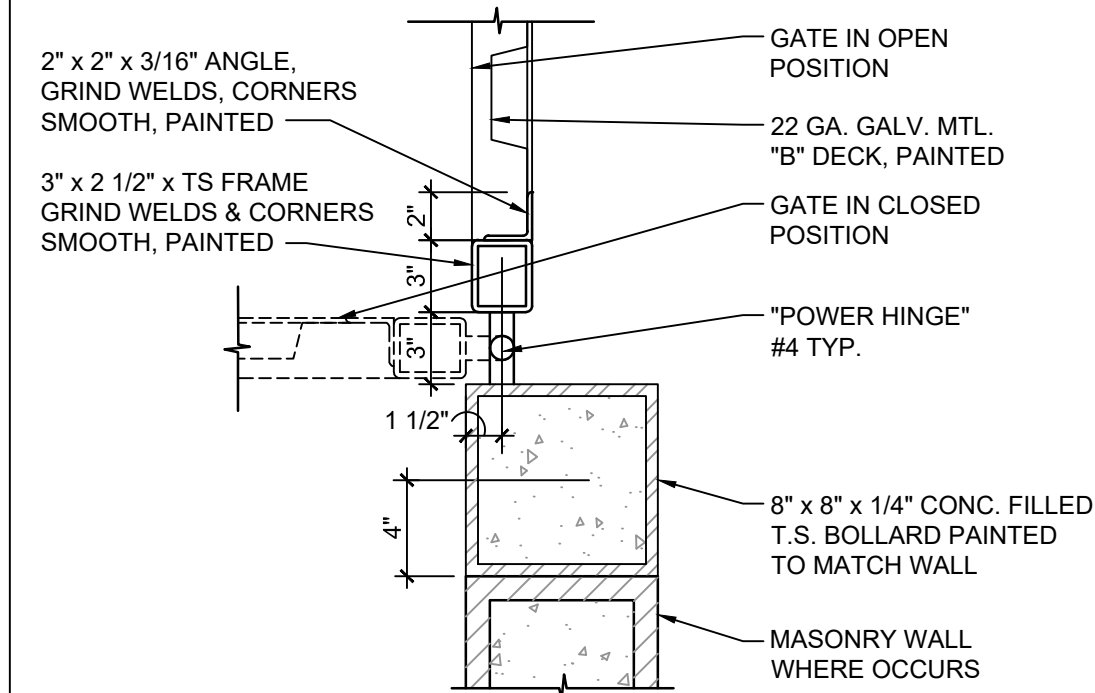
13 6-FOOT REFUSE MASONRY WALL
SCALE: 1/2" = 1'-0"

18



14 SWING GATE CANE BOLT
SCALE: 1 1/2" = 1'-0"

19



15 TRASH GATE HINGE DETAIL
SCALE: 1 1/2" = 1'-0"

20

16

ONE YARD SELF-CONTAINED COMPACTOR Specifications

Model	Charge Box Capacity	WASTEC Rating	Clear Top Opening	Theoretical Cycle Time	Total Force	Ram Face Pressure	Ram Face Dimensions, W X H	Ram Penetration	Motor - 3Phase - 208/230/460 Vac	Pump Capacity	Hydraulic Reservoir Capacity	Hydraulic Cylinder	Operating Pressure
SC-T1-16/15/20	1 Cu Yd	1.52	41" x 58"	28 Sec	44,200 lbs	Normal 40.0 Psi Maximum 48.0 Psi	48" x 23"	6"	10 Hp	10.5 Gpm	22 gal	Bore Dia. Two, 4"	Normal 2000 Psi Maximum 2400 Psi
SC-T1-16/20/25-HTG	1 Cu Yd	1.52	41" x 58"	28 Sec	44,200 lbs	Normal 40.0 Psi Maximum 48.0 Psi	48" x 23"	6"	10 Hp	10.5 Gpm	22 gal	Bore Dia. Two, 4"	Normal 2000 Psi Maximum 2400 Psi

DIMENSIONS	(A) OVER ALL LENGTH			(B) CLEAR TOP LENGTH			(C) PACKER LENGTH			BASE UNIT WEIGHT	NORMAL CONTAINER CAPACITY
	LENGTH	LENGTH	LENGTH	LENGTH	LENGTH	LENGTH	LENGTH	LENGTH			
SC-T1-16	19'-2"	31'	60"	6,500 lbs	10 CU YD						
SC-T1-15	16'-6"	31'	60"	7,000 lbs	15 CU YD						
SC-T1-20	19'-10"	31'	60"	7,500 lbs	20 CU YD						
SC-T1-16-HTG	18'	31'	60"	8,000 lbs	16 CU YD						
SC-T1-20-HTG	19'-8"	31'	60"	8,200 lbs	20 CU YD						

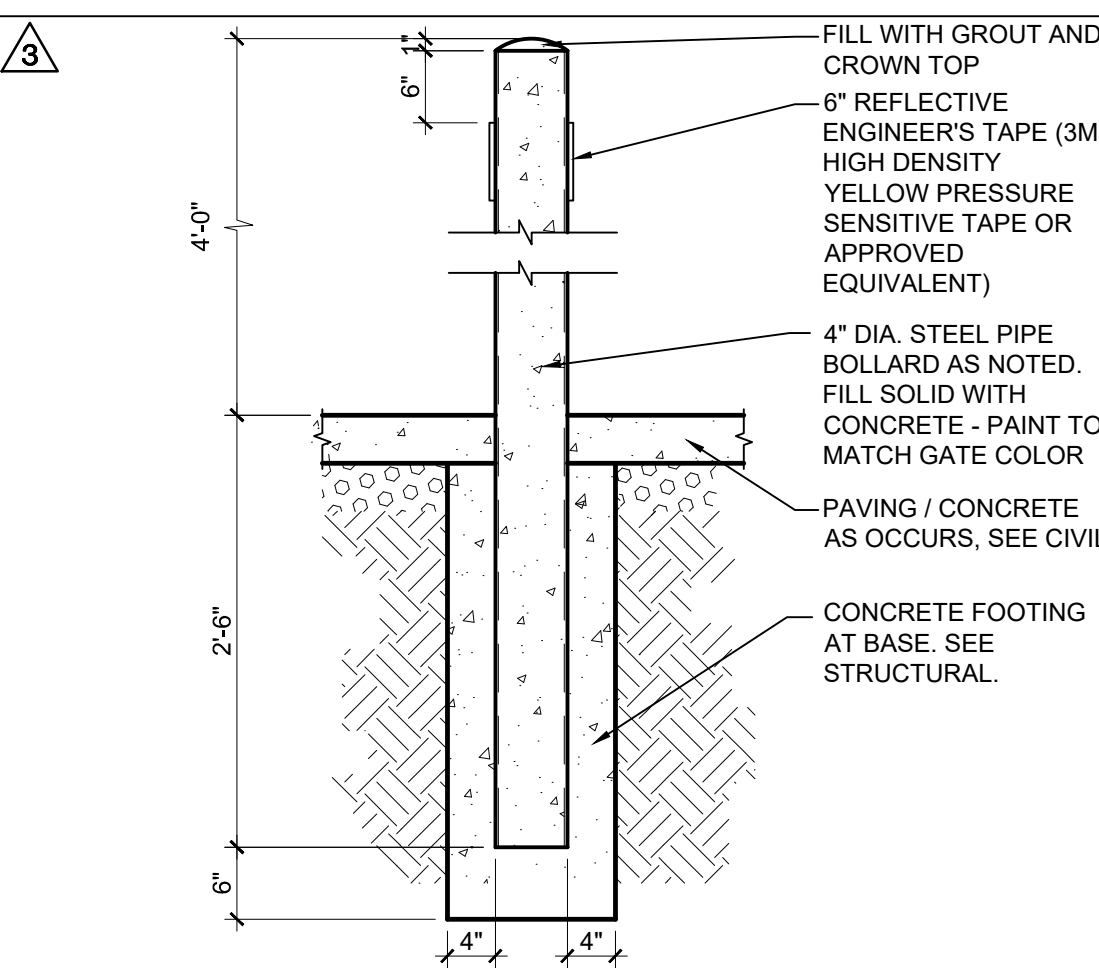
TWO YARD SELF-CONTAINED COMPACTOR Specifications

Model	Charge Box Capacity	WASTEC Rating	Clear Top Opening	Theoretical Cycle Time	Total Force	Ram Face Pressure	Ram Face Dimensions, W X H	Ram Penetration	Motor - 3Phase - 208/230/460 Vac	Pump Capacity	Hydraulic Reservoir Capacity	Hydraulic Cylinder	Operating Pressure
SC-T2-20/25/30/34/38	2 Cubic Yards	1.52	41" x 58"	37 Sec	42,700 lbs	Normal 24.5 Psi Maximum 25.5 Psi	60" x 29"	8"	10 Hp	10.5 Gpm	22 GAL	Bore Dia. Two, 4"	Normal 2000 Psi Maximum 2400 Psi
SC-20/25/30/34	2 Cubic Yards	1.52	34" x 58"	37 Sec	38,500 lbs	Normal 24.5 Psi Maximum 25.5 Psi	60" x 29"	8"	10 Hp	10.5 Gpm	22 GAL	Bore Dia. Two, 4"	Normal 2000 Psi Maximum 2400 Psi
SC-T2-20/25/30/34-HTG	2 Cubic Yards	1.52	41" x 58"	37 Sec	42,700 lbs	Normal 24.5 Psi Maximum 25.5 Psi	60" x 29"	8"	10 Hp	10.5 Gpm	22 GAL	Bore Dia. Two, 4"	Normal 2000 Psi Maximum 2400 Psi

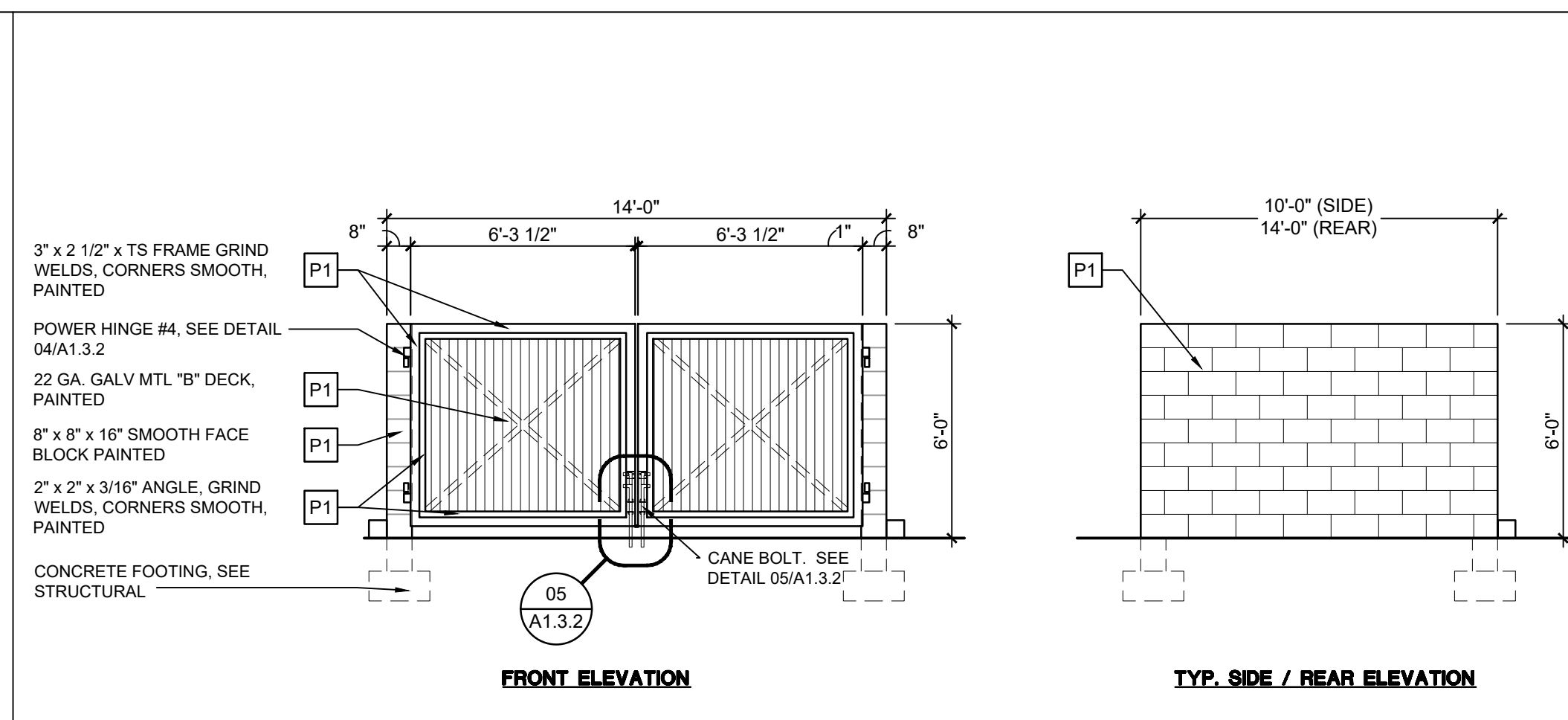
DIMENSIONS	(A) OVER ALL LENGTH			(B) CLEAR TOP LENGTH			(C) PACKER LENGTH			BASE UNIT WEIGHT	NORMAL CONTAINER CAPACITY
	LENGTH	LENGTH	LENGTH	LENGTH	LENGTH	LENGTH	LENGTH	LENGTH			
SC-T2-20	17'-4"	41"	71"	9800 lbs	20 CU YD						
SC-T2-25	19'-11"	41"	71"	10,800 lbs	25 CU YD						
SC-T2-30	22'-1"	41"	71"	10,800 lbs	30 CU YD						
SC-T2-34	23'-9"	41"	71"	10,900 lbs	34 CU YD						
SC-T2-38	25'-10"	41"	71"	12,000 lbs	38 CU YD						
SC-20-20	19'	34"	90 1/2"	9,800 lbs	20 CU YD						
SC-25-20	21'-7"	34"	90 1/2"	10,100 lbs	25 CU YD						
SC-20-25	23'-9"	34"	90 1/2"	10,800 lbs	30 CU YD						
SC-25-25	25'-9"	34"	90 1/2"	10,900 lbs	34 CU YD						
SC-T2-20-HTG	17'	41"	71"	10,900 lbs	20 CU YD						
SC-T2-25-HTG	19'-8"	41"	71"	10,900 lbs	25 CU YD						
SC-T2-30-HTG	21'-9"	41"	71"	11,540 lbs	30 CU YD						

TYPICAL REFUSE CONTAINER CAPACITY: 4 CUBIC YARDS
 - ONE CONTAINER PER EVERY 20,000 SF:
 243,000 S.F. / 20,000 SF = 12.15 CONTAINERS, ROUNDED UP TO 13 CONTAINERS
 13 CONTAINERS x 4 CUBIC YARDS = 52 CUBIC YARDS REQUIRED
 = 54 CUBIC YARDS PROVIDED
 PROVIDED COMPACTOR SPECS:
 -COMPACTOR #1 - CRAM-A-LOT SC-T1-20 = 20 CUBIC YARDS
 -COMPACTOR #2 - CRAM-A-LOT SC-T2-34 = 34 CUBIC YARDS

11 TRASH COMPACTOR SPECIFICATIONS
SCALE: NTS



12 PIPE BOLLARD DETAIL
SCALE: 3/4" = 1'-0"



08 TRASH ENCLOSURE GATE ELEVATION
SCALE: 1/4" = 1'-0"

NUMBER	REVISION	DATE
3	SITE REVISION	06/22/2020

(PER CITY OF SCOTTSDALE DETAIL 2147-1)

SHEET TITLE:	SITE DETAILS
ISSUE DATE:	10/07/22
DRAWN BY:	
CHECKED BY:	
PROJECT No.:	
SHEET:	A1.3.3