

# RECTORY ADDITION TO ST. BERNARD OF CLAIRVAUX CATHOLIC CHURCH 10755 N. 124TH ST. - SCOTTSDALE, ARIZONA 85259 PRELIMINARY GRADING AND DRAINAGE PLAN

### GENERAL NOTES

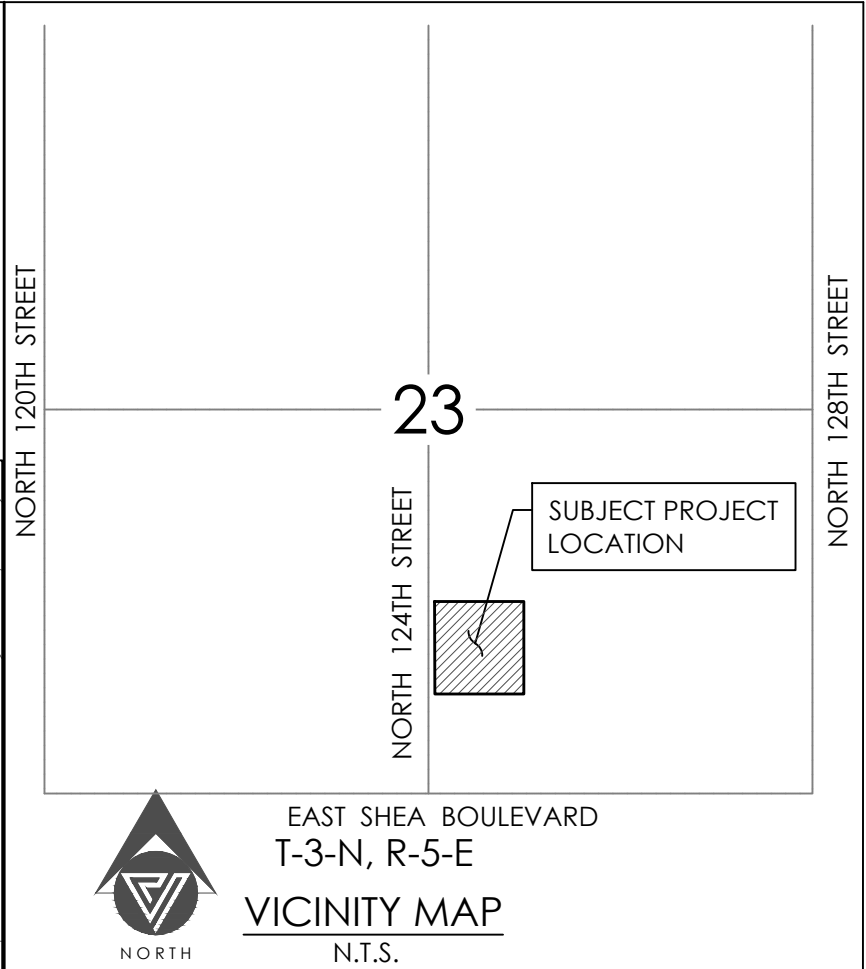
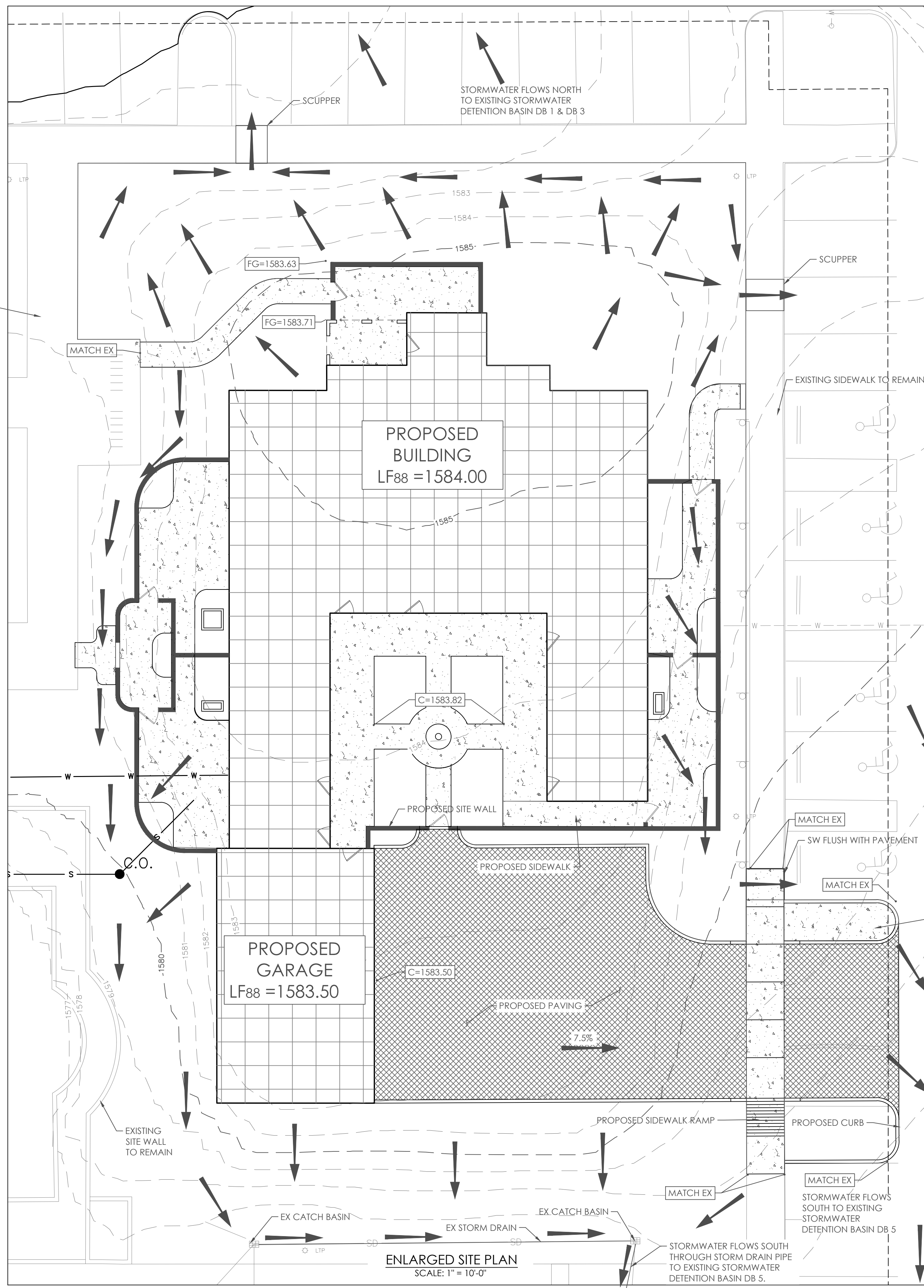
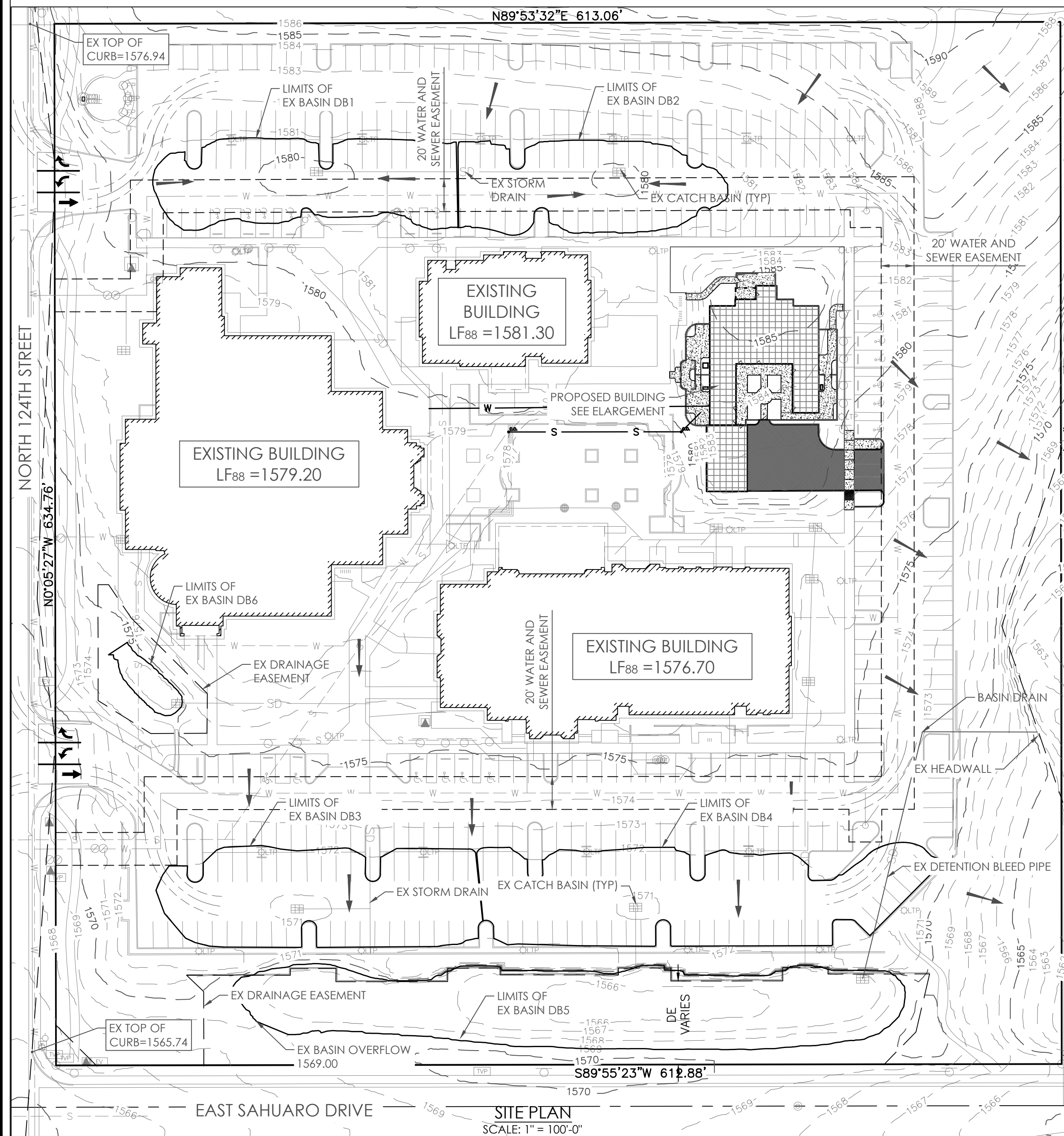
1. ALL GRADES SHOWN HEREON ARE PRELIMINARY AND SUBJECT TO CHANGE PENDING FINAL DESIGN.
2. ALL ELEVATIONS SHOWN HEREON ARE RELATIVE TO FINISH SURFACE UNLESS OTHERWISE INDICATED.
3. EXISTING UTILITY LOCATIONS SHOWN HEREON ARE APPROXIMATE ONLY AND HAVE NOT BEEN FIELD VERIFIED BY THE ENGINEER.
4. ROOF DRAINAGE IS ASSUMED TO DAYLIGHT AT FINISHED GRADE AND SURFACE DRAIN AS NECESSARY.
5. NO IMPERVIOUS UNDER-TREATMENT ALLOWED IN BOTTOM OF RETENTION BASINS WHEN SURFACE PERCOLATION IS UTILIZED FOR DISSIPATION. PENDING GEOTECHNICAL TESTING.
6. NO UNDERGROUND RETENTION PROVIDED.

### WEIGHTED RUNOFF COEFFICIENT CALCULATIONS

DRAINAGE AREA	SURFACE TYPE	RUNOFF COEFFICIENT	AREA (SF)
HARDSCAPE AREA:	ASHPHALT/CONCRETE	0.95	176,533
LANDSCAPED AREA:	LANDSCAPED	0.40	147,879
TOTAL		.70	324,412

### EXISTING DETENTION BASIN VOLUME CALCULATIONS

DETENTION BASIN	VOLUME PROVIDED	DEPTH
DB1	3,308CF	1.0
DB2	2,716CF	1.0
DB3	5,211CF	1.0
DB4	4,025CF	1.0
DB5	38,490CF	3.5
DB6	1,473CF	2.25
ABOVE GROUND SITE TOTAL = 57,423CF		



**OWNER**  
ST BERNARD OF CLAIRVAUX  
ROMAN CATHOLIC PARISH  
400 E MONROE ST  
PHOENIX, ARIZONA 85004  
CONTACT: MIKE HUESMAN

**ARCHITECT**  
BRENT MAUPIN ENGINEERING & DESIGN  
P.O. BOX 21032  
SEDONA, AZ 86341  
PH: (928) 300-4822  
CONTACT: BRENT MAUPIN, PE

**CIVIL ENGINEER**  
VESPRO  
8502 E. VIA DE VENTURA, SUITE 101  
SCOTTSDALE, AZ 85258  
PH: (480) 393-3640  
CONTACT: PETER VESECKY, PE

**ZONING**  
R1-43 ELS

**ASSESSOR'S PARCEL NUMBER**  
217-29-865

**AREA**  
SUBJECT PARCEL CONTAINS 389,620 SQUARE FEET  
OR 8.944 ACRES MORE OR LESS.

**LEGAL DESCRIPTION**  
LOT 1, MINOR SUBDIVISION PLAT, SAINT BERNARD OF CLAIRVAUX,  
ROMAN CATHOLIC PARISH, ACCORDING TO THE PLAT OF  
RECORD IN THE OFFICE OF THE COUNTY RECORDER OF  
MARICOPA COUNTY, ARIZONA, BOOK 1066 OF MAPS, PAGE 11.

**PROJECT DESCRIPTION**  
THE CONSTRUCTION OF A NEW RECTORY CONSISTING OF  
APARTMENTS, A KITCHEN, GREAT ROOM, CHAPEL AND PRIVATE  
GARAGE WITH ALL SUPPORTING SERVICES.

**BENCHMARK**  
THE BENCHMARK FOR THIS PROJECT IS NATIONAL GEODETIC  
SURVEY POINT HAVING A DESIGNATION OF 1FJ1 AND A PID OF  
A3688. LOCATED AS DESCRIBED ON NGS DATASHEET BEING  
SOUTHWEST OF THE INTERSECTION OF FRANK LLOYD WRIGHT  
BOULEVARD AND SWEETWATER AVENUE IN SCOTTSDALE,  
MARICOPA COUNTY, ARIZONA.  
ELEVATION = 1504.7 (NAVD88)

**FLOOD ZONE**  
ACCORDING TO FEMA FIRM MAPS #04013C1780L  
AND #04013C1785L, DATED OCTOBER 16, 2013, THE PROJECT SITE  
IS LOCATED WITHIN A FLOOD ZONE "X": AREAS OF 0.2% ANNUAL  
CHANCE FLOOD; AREAS LESS THAN 1 FOOT OR WITH DRAINAGE  
AREAS LESS THAN 1 SQUARE MILE; AND AREAS PROTECTED BY  
LEVEES FROM 1% ANNUAL CHANCE FLOOD.

**LEGEND**  
→ = DRAINAGE FLOW PATH

**NORTH**  
SCALE: 1" = 10'

0 5' 10' 20' 30'

Arizona 811  
Call 811 or click Arizona811.com

**PROFESSIONAL ENGINEER**  
14402  
PETER VESECKY  
ARIZONA U.S.A.

PROJECT NO: 20004  
DRAWING DATE: 11/15/21  
DRAWN BY: MEC  
CHECKED BY: PV  
DRAWING SCALE: AS SHOWN  
DRAWING FILE: 20004-C-SP-1.DWG

PRELIM GRADING PLAN  
**PGD1**  
1 of 1

**VESPRO**  
8502 E. Via de Ventura, Suite 101  
Scottsdale, AZ 85258  
Ph: (480) 393-3640 Fax: (480) 393-3689  
www.Vespro.net

**RECTORY ADDITION TO ST. BERNARD OF CLAIRVAUX CATHOLIC CHURCH**  
10755 N. 124TH ST. - SCOTTSDALE, ARIZONA 85259  
PRELIMINARY GRADING AND DRAINAGE PLAN

C.O.S. PROJECT NO. 866-PA-2020 - KEY CODE 9T728 - NEW PHASE TO 38-DR-2010