

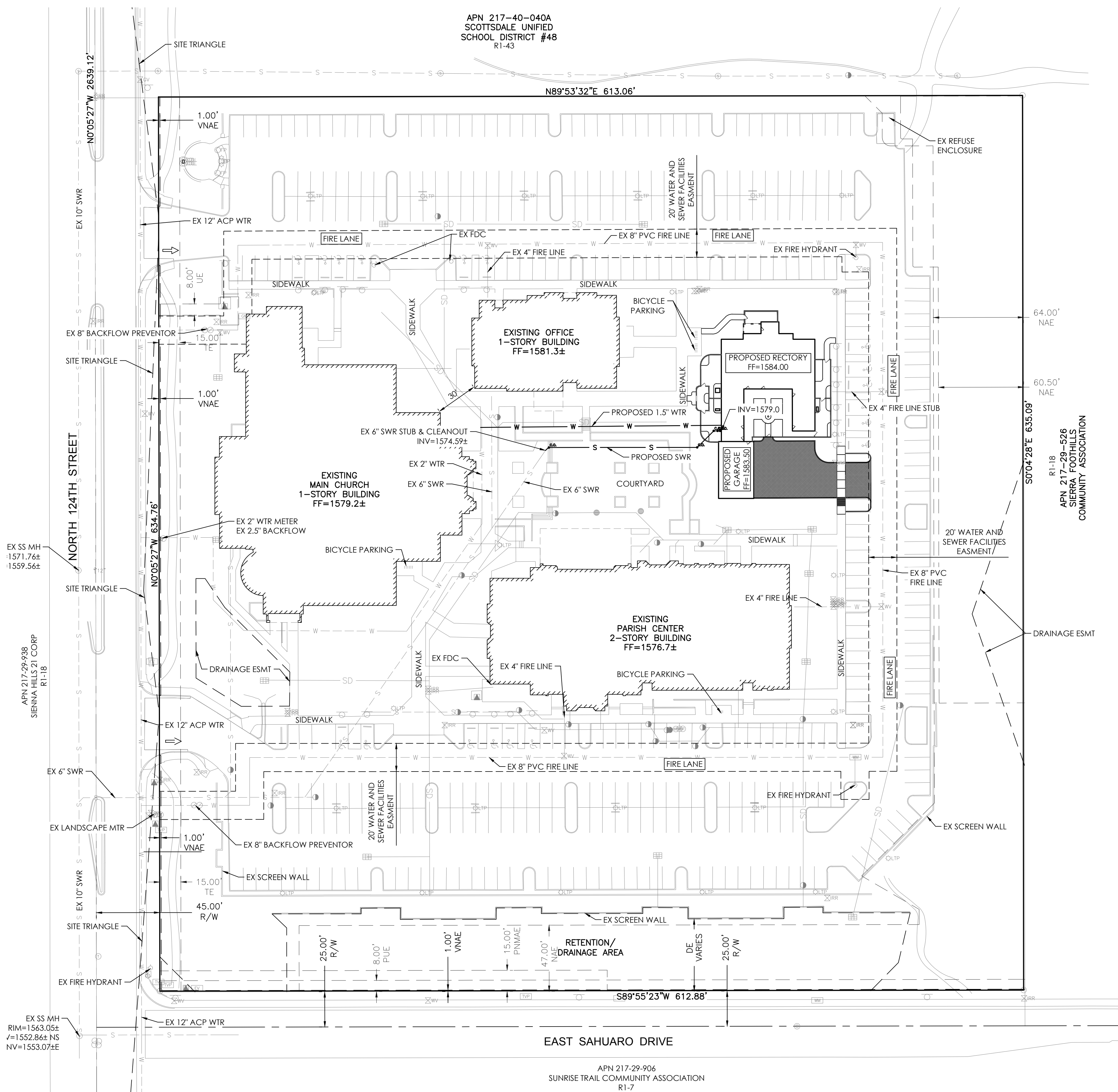
RECTORY ADDITION TO ST. BERNARD OF CLAIRVAUX CATHOLIC CHURCH

10755 N. 124TH ST. - SCOTTSDALE, ARIZONA 85259

PRELIMINARY WATER AND SEWER PLAN

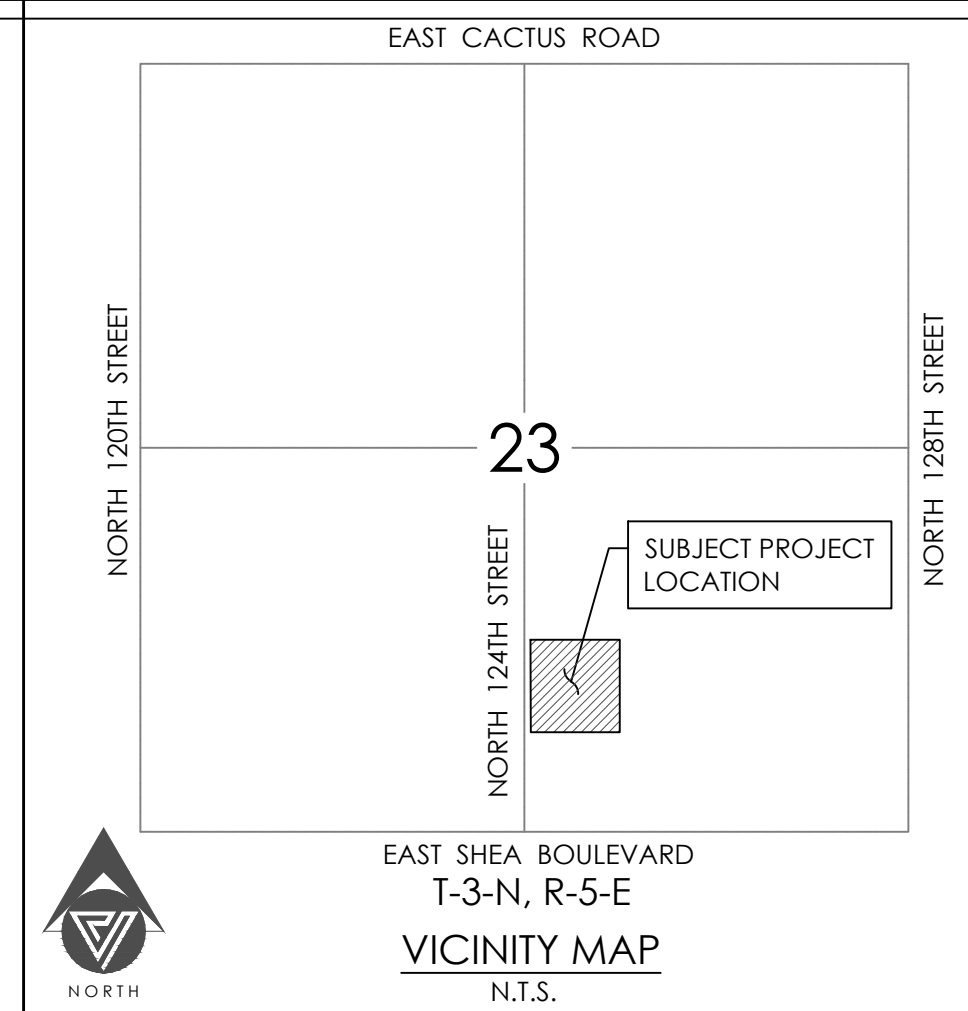
APN 217-40-040A
SCOTTSDALE UNIFIED
SCHOOL DISTRICT #48
R1-43

N89°53'32"E 613.06'



EAST SAHUARO DRIVE

APN 217-29-906
SUNRISE TRAIL COMMUNITY ASSOCIATION
R1-7



PROJECT CONTACTS

OWNER

ST BERNARD OF CLAIRVAUX
ROMAN CATHOLIC PARISH
400 E MONROE ST
PHOENIX, ARIZONA 85004

ARCHITECT

BRENT MAUPIN ENGINEERING & DESIGN
P.O. BOX 21032
SEDONA, AZ 86341
PH: (928) 300-4822
CONTACT: BRENT MAUPIN, PE

CIVIL ENGINEER

VESPRO
8502 E. VIA DE VENTURA, SUITE 101
SCOTTSDALE, AZ 85258
PH: (480) 393-3640
CONTACT: PETER VESECKY, PE

SITE DATA

ZONING

R1-43 ELS

ASSESSOR'S PARCEL NUMBER

217-29-865

AREA

SUBJECT PARCEL CONTAINS
389,620 SQUARE FEET OR
8.944 ACRES MORE OR LESS.

OPEN SPACE

(SEE OPEN SPACE PLAN)
129,353 SF - REQUIRED
163,078 SF - PROVIDED

PROPERTY ADDRESS

10775 N. 124TH ST, SCOTTSDALE

LEGAL DESCRIPTION

LOT 1, MINOR SUBDIVISION PLAT, SAINT BERNARD OF CLAIRVAUX, ROMAN CATHOLIC PARISH, ACCORDING TO THE PLAT OF RECORD IN THE OFFICE OF THE COUNTY RECORDER OF MARICOPA COUNTY, ARIZONA, BOOK 1066 OF MAPS, PAGE 11.

PROJECT DESCRIPTION

THE CONSTRUCTION OF A NEW RECTORY CONSISTING OF APARTMENTS, A KITCHEN, GREAT ROOM, CHAPEL AND PRIVATE GARAGE WITH ALL SUPPORTING SERVICES.

LEGEND

- - - - - EXISTING BOUNDARY LINE
- - - - - EXISTING EASEMENT LINE
- FIRE LANE - DESIGNATED FIRE LANE
- C.O. - SANITARY SEWER CLEANOUT
- - - - - S - SEWER
- - - - - W - WATER

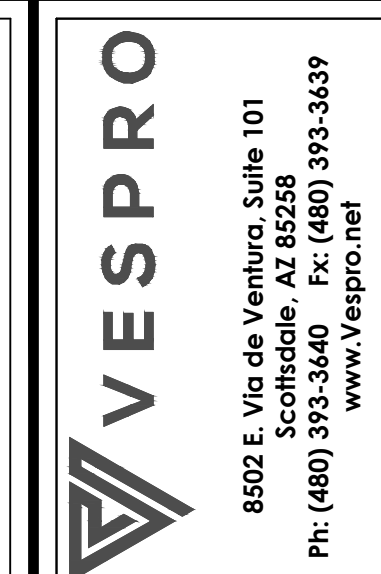
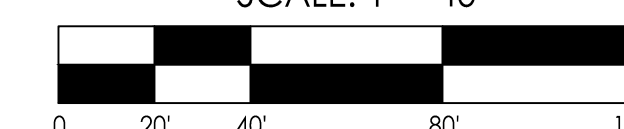
GENERAL NOTES

1. EXISTING UTILITY LOCATIONS SHOWN HEREON ARE APPROXIMATE ONLY AND HAVE NOT BEEN FIELD VERIFIED BY THE ENGINEER.



NORTH

SCALE: 1" = 40'



REVISIONS

RECTORY ADDITION TO ST. BERNARD OF CLAIRVAUX CATHOLIC CHURCH
10755 N. 124TH ST. - SCOTTSDALE, ARIZONA 85259
PRELIMINARY WATER AND SEWER PLAN



PROJECT NO: 2004
DRAWING DATE: 11/4/21
DRAWN BY: MEC
CHECKED BY: PV
DRAWING SCALE: AS SHOWN
DRAWING FILE: 2004-C-WS.DWG

PRELIMINARY
WATER & SEWER
WS01
1 of 1
PLAN

C.O.S. PROJECT NO. 866-PA-2020 - KEY CODE 91728 - NEW PHASE TO 38-DR-2010