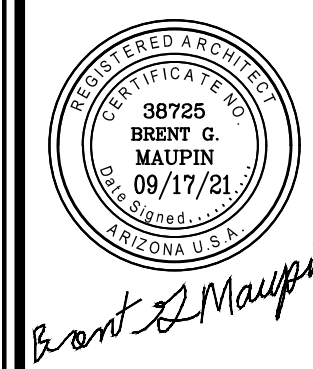


REVISIONS	BY
03-10-21	
08-12-21	
09-17-21	

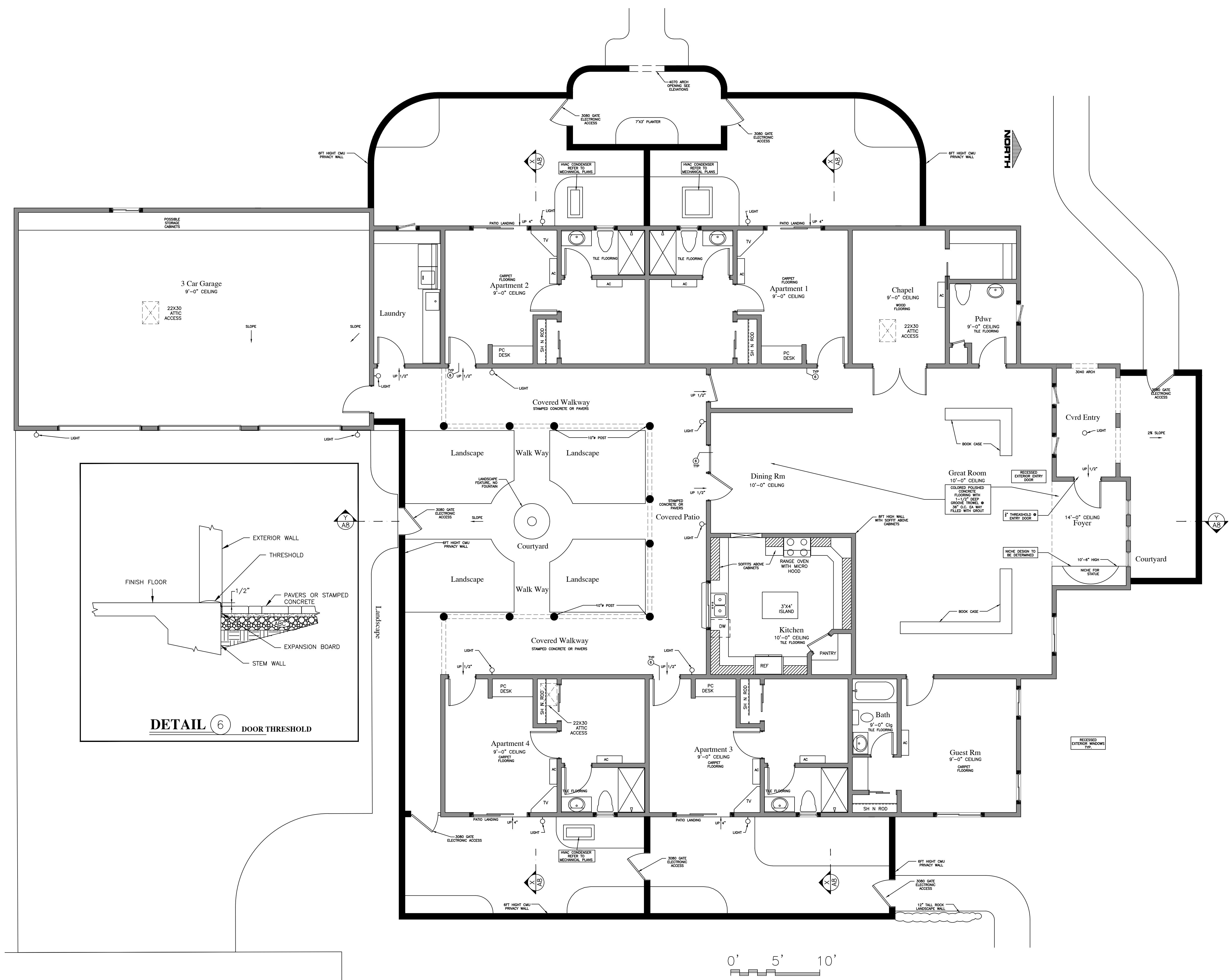
brent maupin engineering & design
 928-300-4822
 P.O. BOX 21032 SEDONA AZ 86341



RECTORY
 ST. BERNARD OF CLAIRVAUX CATHOLIC CHURCH
 10755 N. 124TH ST.
 SCOTTSDALE, AZ. 85250

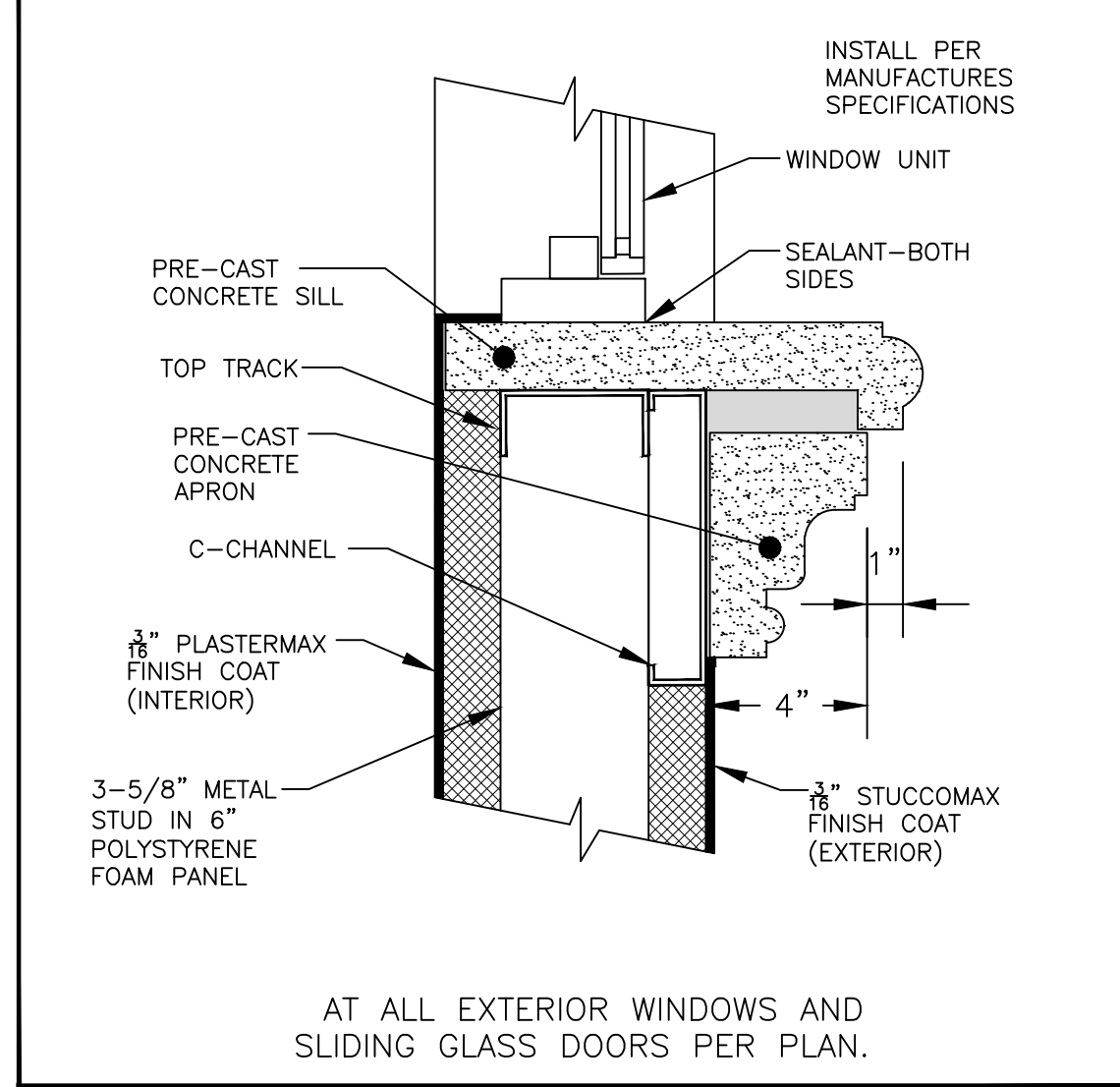
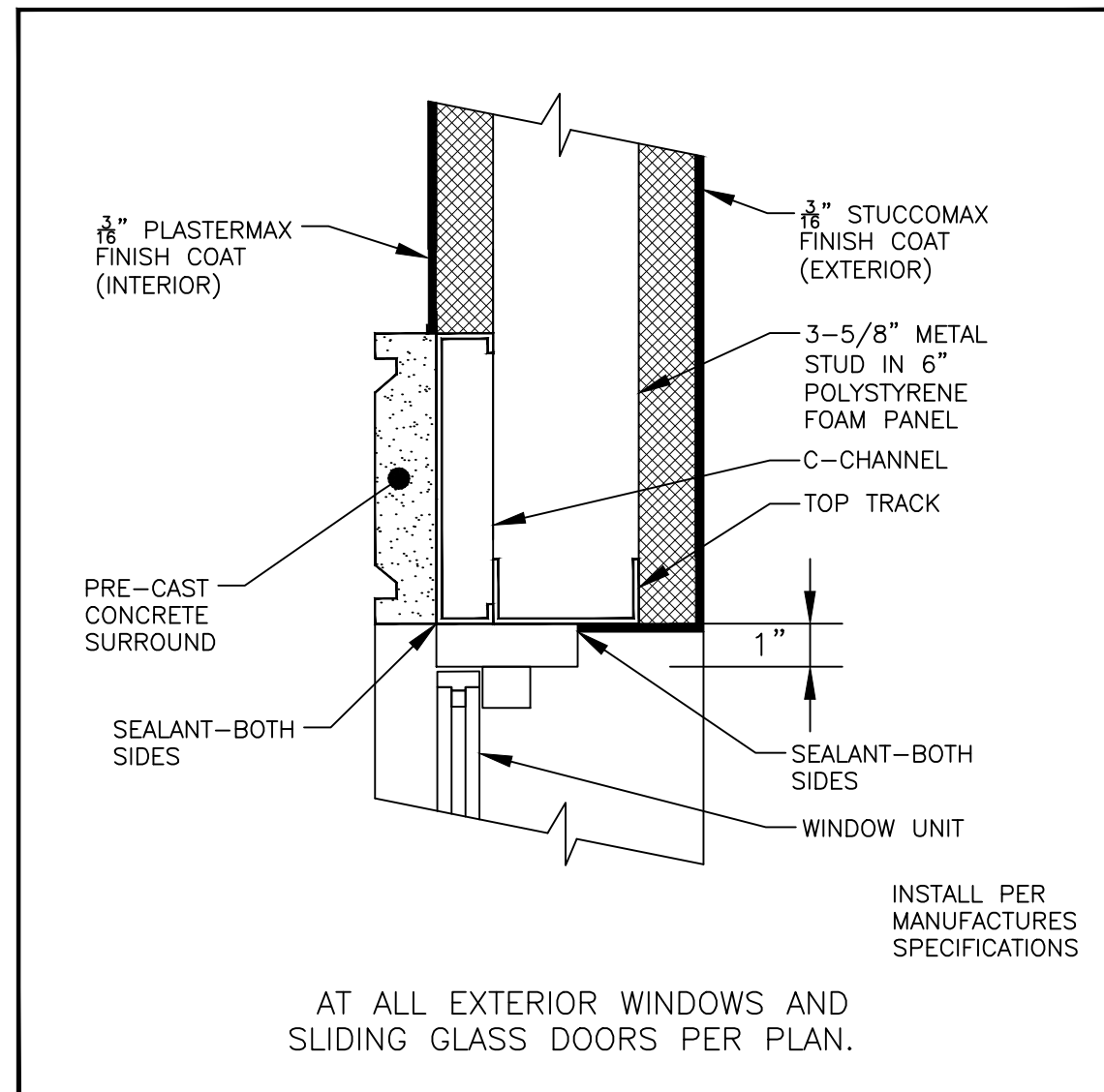
DATE 10-18-20
 SCALE AS SHOWN
 DRAWN
 JOB
 SHEET NO.

A-4



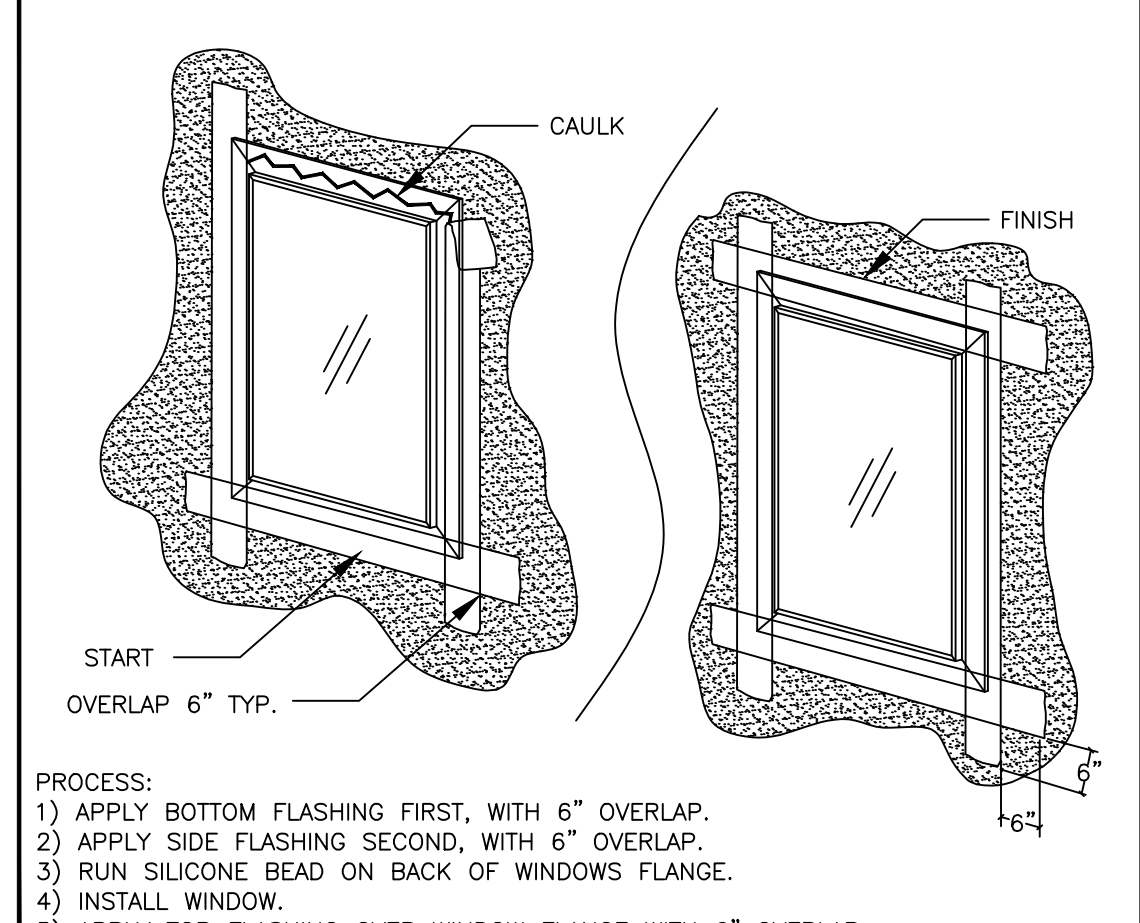
FLOOR PLAN

SCALE: 3/16" = 1'-0"

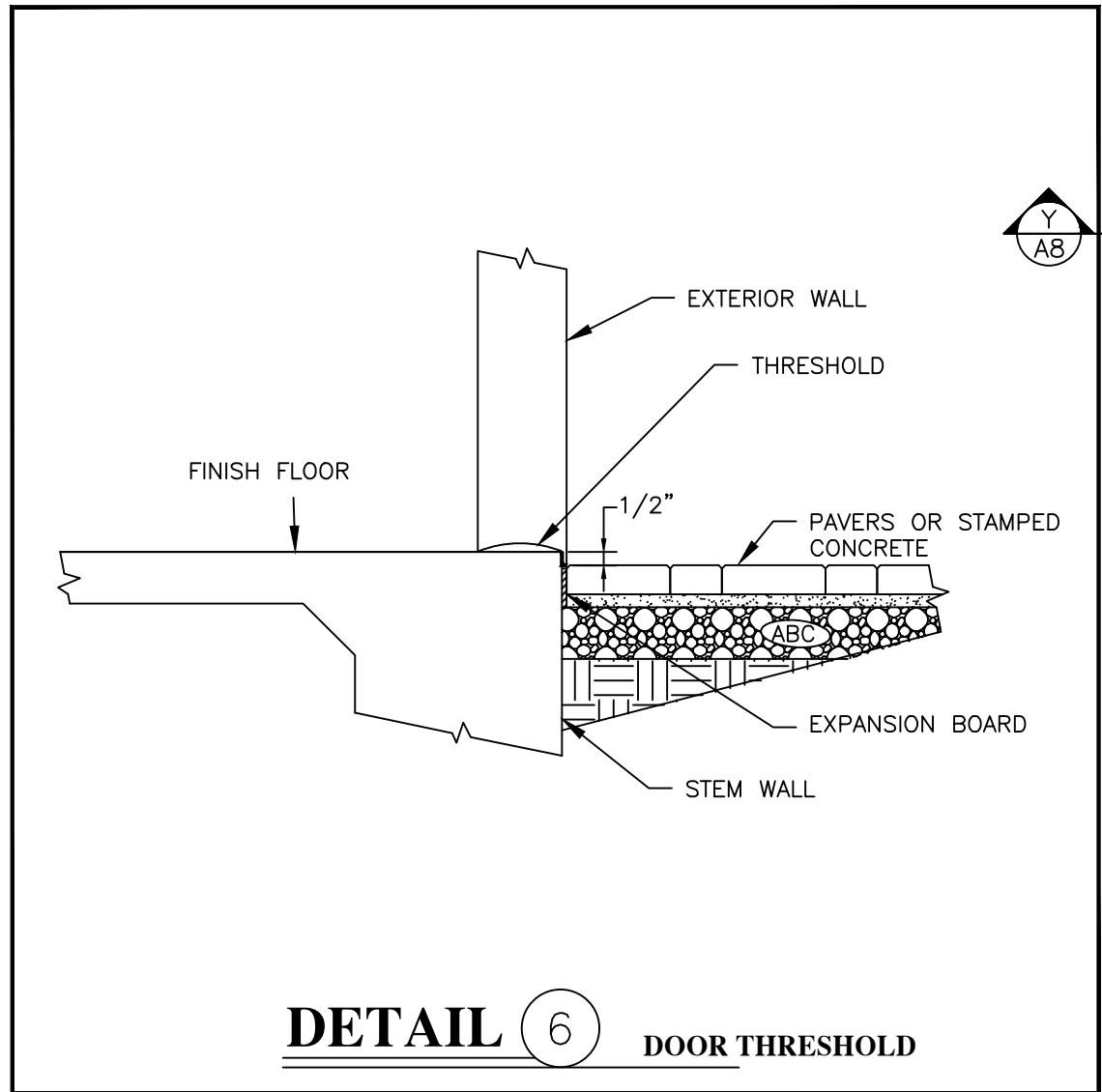


WINDOW FLASHING
 TYP. ALL EXTERIOR WINDOWS AND SLIDING GLASS DOORS.

NOTE:
 THIS PROCESS IS THE MINIMUM REQUIREMENT IF NO MANUFACTURERS DETAILS ARE PROVIDED. FOLLOW MANUFACTURERS RECOMMENDATIONS.



- PROCESS:
- 1) APPLY BOTTOM FLASHING FIRST, WITH 6" OVERLAP.
 - 2) APPLY SIDE FLASHING SECOND, WITH 6" OVERLAP.
 - 3) RUN SILICONE BEAD ON BACK OF WINDOWS FLANGE.
 - 4) INSTALL WINDOW.
 - 5) APPLY TOP FLASHING OVER WINDOW FLANGE WITH 6" OVERLAP.



DETAIL 6 DOOR THRESHOLD