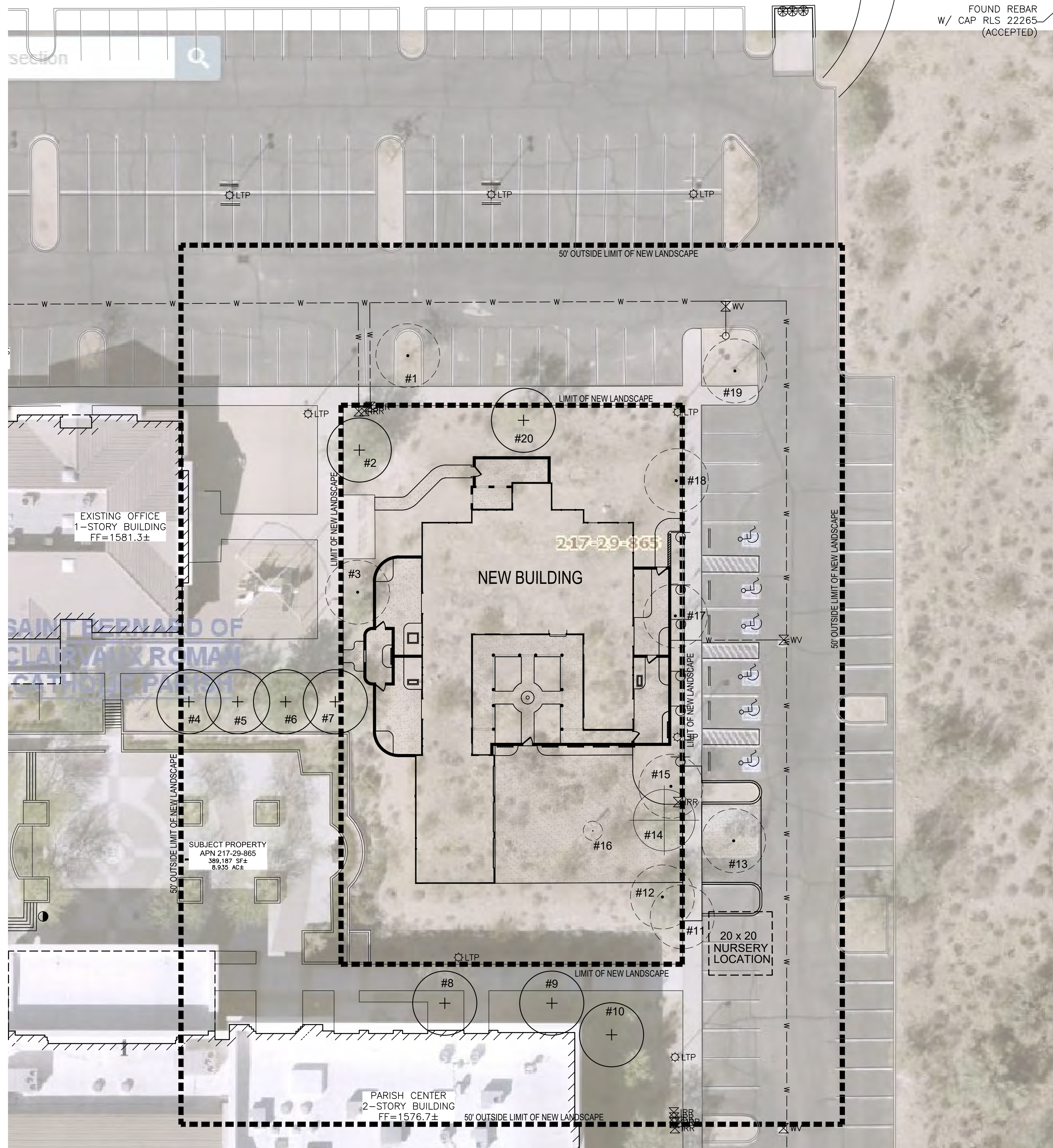


N89°53'32"E 613.06'



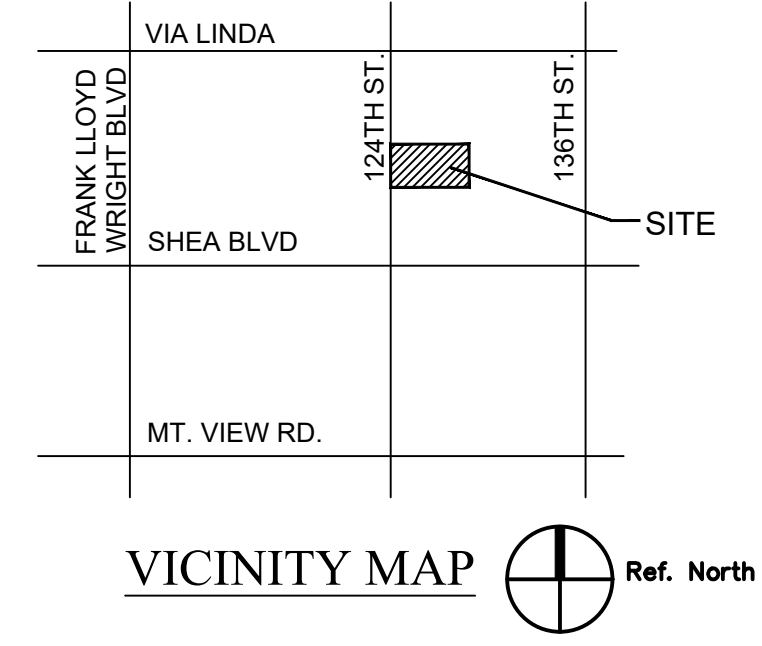
NATIVE PLANT LEGEND

TREES	QTY	CACTI	QTY		
#2	EXISTING TREE (TO REMAIN) (PROTECT IN PLACE)	9 QTY	#16	EXISTING CACTI (TO BE REMOVED)	1 QTY
#14	EXISTING TREE (TO BE RELOCATED)	1 QTY			
#1	EXISTING TREE (TO BE REMOVED)	9 QTY			
TOTAL TREES		19 QTY	TOTAL CACTI		1 QTY

NATIVE PLANT INVENTORY

#	BOTANICAL NAME	STATUS	CALIPER	HEIGHT/ WIDTH / COMMENTS
1	PROSOPIS SPP.	NS / D	4" CAL.	10' HT / 10' WD / LEANING
2	OLNEYA TESOTA	RIP	6" CAL.	20' HT / 20' WD / HEALTHY
3	OLNEYA TESOTA	NS / D	5" CAL.	10' HT / 10' WD / LEANING
4	CERCIDIUM MICROPHYLLUM	RIP	6" CAL.	18' HT / 18' WD / HEALTHY
5	CERCIDIUM FLORIDUM	RIP	4" CAL.	18' HT / 18' WD / HEALTHY
6	OLNEYA TESOTA	RIP	8" CAL.	20' HT / 20' WD / HEALTHY
7	CERCIDIUM FLORIDUM	RIP	5" CAL.	18' HT / 18' WD / HEALTHY
8	CERCIDIUM 'DESERT MUSEUM'	RIP	4" CAL.	15' HT / 15' WD / HEALTHY
9	PROSOPIS SPP.	RIP	4" CAL.	15' HT / 15' WD / HEALTHY
10	CERCIDIUM FLORIDUM	RIP	4" CAL.	15' HT / 15' WD / HEALTHY
11	PROSOPIS SPP.	NS / D	3" CAL.	12' HT / 12' WD / LOCATION TO SIDEWALK
12	CERCIDIUM MICROPHYLLUM	NS / D	4" CAL.	12' HT / 12' WD / LEANING
13	CHILOPSIS LINEARIS	NS / D	4" CAL.	8' HT / 6' WD / DAMAGED
14	CERCIDIUM MICROPHYLLUM	S / R	5" CAL.	15' HT / 15' WD / HEALTHY
15	PROSOPIS SPP.	NS / D	5" CAL.	15' HT / 15' WD / LEANING
16	CARNEGIEA GIGANTEA	NS / D	5" CAL.	5' HT / BAD BASE
17	CERCIDIUM MYCROPHYLLUM	NS / D	3" CAL.	8' HT / 6' WD / LOCATION TO SIDEWALK
18	CERCIDIUM MICROPHYLLUM	NS / D	3" CAL.	8' HT / 6' WD / DAMAGED
19	CHILOPSIS LINEARIS	NS / D	4" CAL.	10' HT / 6' WD / DAMAGED
20	CERCIDIUM MICROPHYLLUM	RIP	6" CAL.	18' HT / 18' WD / HEALTHY

RIP - REMAIN IN PLACE, NS/D - NON-SALVAGEABLE/ DESTROY, S/R - SALVAGEABLE RELOCATE



PROPOSED SALVAGE CONTRACTOR
 NATIVE RESOURCES INTERNATIONAL
 623-869-6757

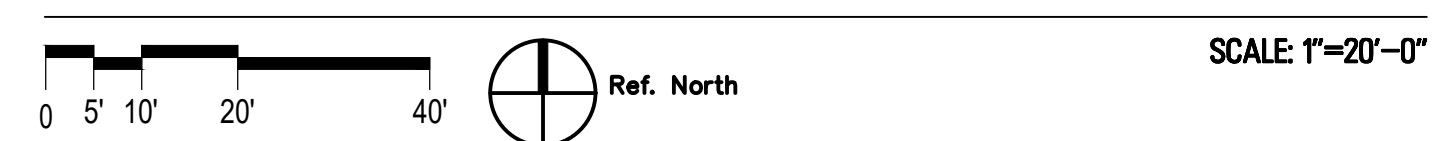
CIVIL ENGINEER
 VESPRO
 PETER VESECKY
 8502 E. VIA DE VENTURA, SUITE 101
 SCOTTSDALE, ARIZONA 85258



LANDSCAPE PLAN APPROVED
CITY OF SCOTTSDALE

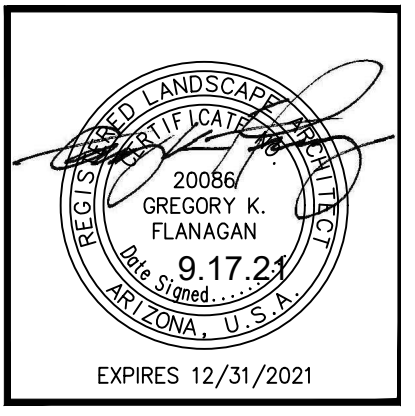
CASE NUMBER	APPROVED BY	DATE
CONSTRUCTION AND INSTALLATION SHALL BE IN ACCORDANCE WITH THIS PLAN AND ANY AND ALL DEVIATION WILL REQUIRE RE-APPROVAL. LANDSCAPE INSTALLATION TO BE APPROVED BY CITY OF SCOTTSDALE INSPECTION SERVICES BEFORE CERTIFICATE OF OCCUPANCY IS ISSUED.		

NATIVE PLANT INVENTORY / SALVAGE PLAN



ST. BERNARD CATHOLIC CHURCH
 SCOTTSDALE, ARIZONA

G.K. FLANAGAN ASSOCIATES, INC.
 LANDSCAPE ARCHITECTURE PLANNING
 4828 N. 44th STREET PHOENIX, AZ 85018
 602 . 812 . 8681 fax
 602 . 812 . 8683 fax



revisions:

 date: **09.17.2021**
 contents: **NATIVE PLANT PLAN**
 sheet no. **NPI-1.1**