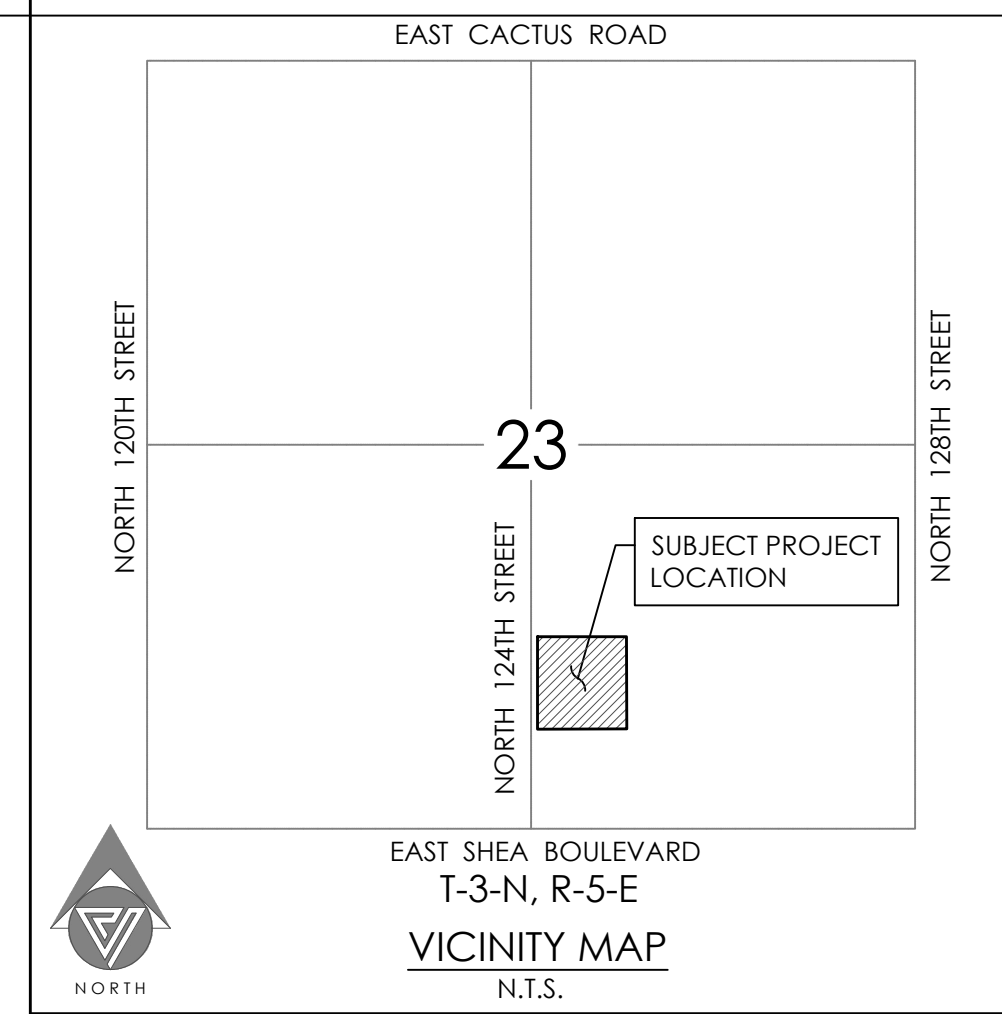
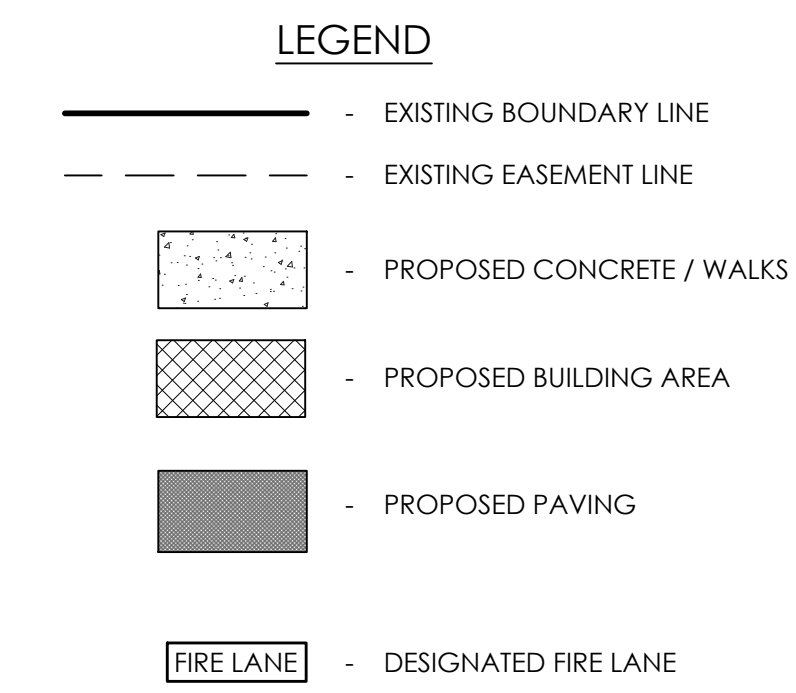
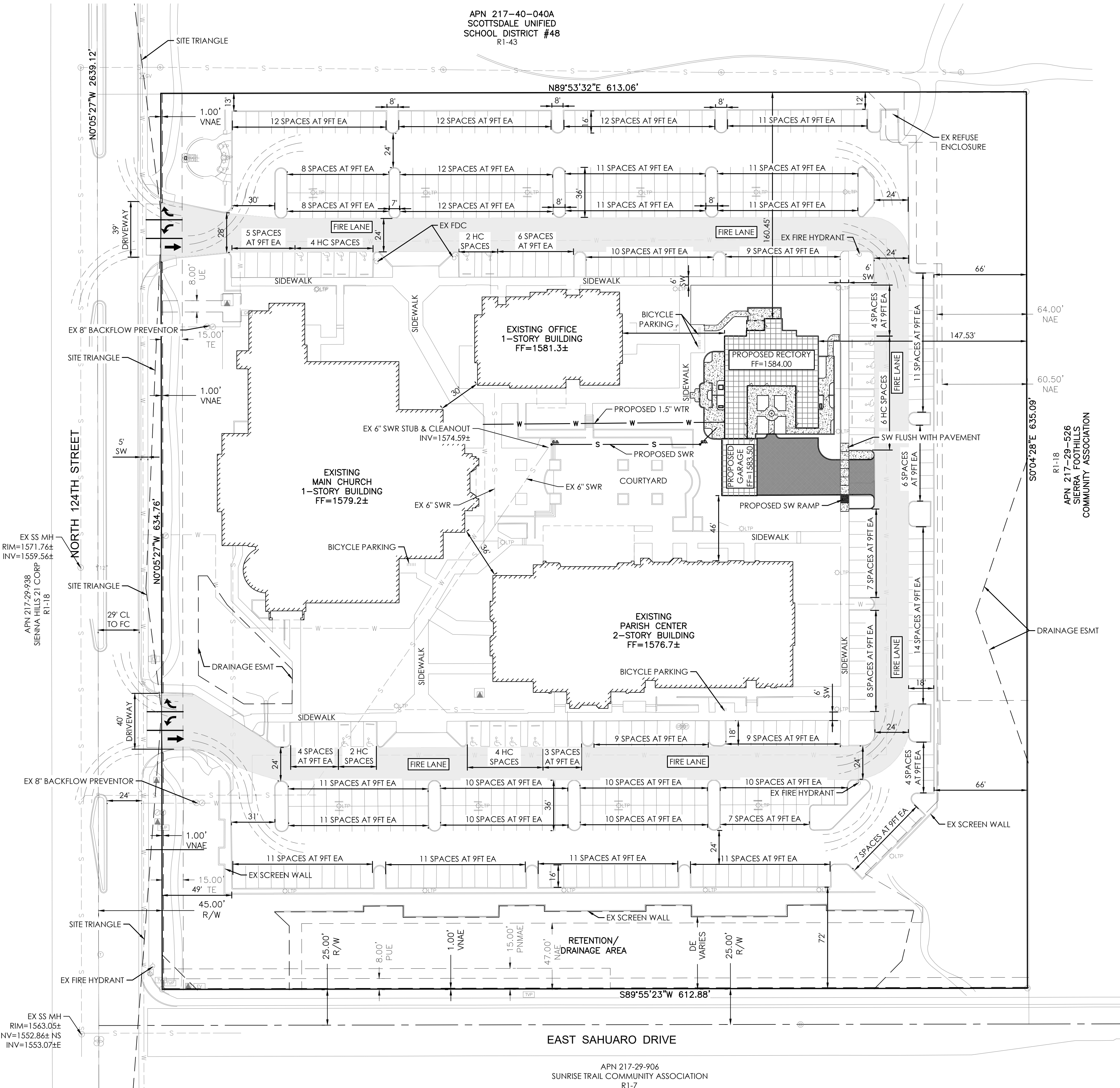


RECTORY ADDITION TO ST. BERNARD OF CLAIRVAUX CATHOLIC CHURCH

10755 N. 124TH ST. - SCOTTSDALE, ARIZONA 85259
SITE PLAN



PROJECT CONTACTS

OWNER ST BERNARD OF CLAIRVAUX ROMAN CATHOLIC PARISH 400 E MONROE ST PHOENIX, ARIZONA 85004 CONTACT: MIKE HUESMAN	ARCHITECT BRENT MAUPIN ENGINEERING & DESIGN P.O. BOX 21032 SEDONA, AZ 86341 PH: (928) 300-4822 CONTACT: BRENT MAUPIN, PE	CIVIL ENGINEER VESPRO 8502 E. VIA DE VENTURA, SUITE 101 SCOTTSDALE, AZ 85258 PH: (480) 393-3640 CONTACT: PETER VESECKY, PE
--	--	--

SITE DATA

ZONING R1-43 ELS	ASSESSOR'S PARCEL NUMBER 217-29-865	AREA SUBJECT PARCEL CONTAINS 389,620 SQUARE FEET OR 8.944 ACRES MORE OR LESS.	OPEN SPACE (SEE OPEN SPACE PLAN) 129,353 SF - REQUIRED 163,078 SF - PROVIDED
----------------------------	---	---	--

PROPERTY ADDRESS
10775 N. 124TH ST. SCOTTSDALE

LEGAL DESCRIPTION
LOT 1, MINOR SUBDIVISION PLAT, SAINT BERNARD OF CLAIRVAUX, ROMAN CATHOLIC PARISH, ACCORDING TO THE PLAT OF RECORD IN THE OFFICE OF THE COUNTY RECORDER OF MARICOPA COUNTY, ARIZONA, BOOK 1066 OF MAPS, PAGE 11.

PROJECT DESCRIPTION
THE CONSTRUCTION OF A NEW RECTORY CONSISTING OF APARTMENTS, A KITCHEN, GREAT ROOM, CHAPEL AND PRIVATE GARAGE WITH ALL SUPPORTING SERVICES.

BUILDING AREAS

EXISTING BUILDINGS		PROPOSED BUILDINGS	
MAIN CHURCH	26,347SF	RECTORY	3,648SF
PARISH OFFICE	6,666SF	RECTORY GARAGE	1,009SF
PARISH CENTER (1ST FLOOR)	19,011SF		
PARISH CENTER (2ND FLOOR)	9,298SF		
TOTAL			
GROSS FLOOR AREA	(EXISTING + PROPOSED) = 65,979SF		

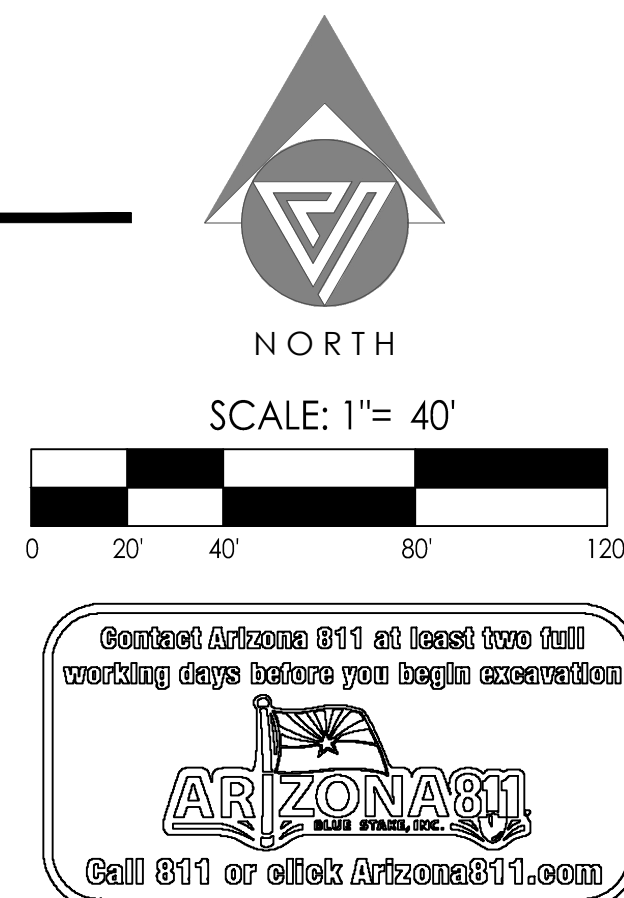
PARKING CALCULATIONS

PARKING REQUIRED	PARKING PROVIDED
STANDARD (SEE FLOOR PLAN WORKSHEET) = 372	370 - STANDARD SPACES
ACCESSIBLE SPACES (390X0.4) = 16	16 - ACCESSIBLE SPACES
ACCESSIBLE VAN (TABLE 9.4 ZONING) = 2	2 - ACCESSIBLE VAN SPACE
390 REQUIRED	3 - GARAGE
	391 - TOTAL PARKING SPACES

BICYCLE PARKING REQUIRED	BICYCLE PARKING PROVIDED
390/10 = 39	42- EXISTING
	0- PROPOSED
	42 - TOTAL BICYCLE SPACES

SHEET INDEX

- SP01 - OVERALL SITE PLAN
- SP02 - REFUSE PLAN
- SP03 - OPEN SPACE PLAN
- SP04 - HARDSCAPE PLAN
- SP05 - PARKING PLAN
- SP06 - PEDESTRIAN AND VEHICULAR CIRCULATION PLAN
- FPW1 - FLOOR PLAN WORKSHEET
- A-1 - ENLARGED ARCHITECTURAL SITE PLAN
- A-2 - NORTH AND EAST SIDE ELEVATIONS
- A-3 - SOUTH AND WEST SIDE ELEVATIONS
- A-4 - FLOOR PLAN
- A-5 - DIMENSIONED FLOOR PLAN
- L-U - LUMENS PLAN
- NP1-1 - NATIVE PLANT INVENTORY/SALVAGE PLAN
- L-1-1 - CONCEPTUAL PLANTING PLAN
- WS01 - PRELIMINARY WATER AND SEWER PLAN
- PGD1 - PRELIMINARY GRADING AND DRAINAGE PLAN



VESPRO
8502 E. Via de Ventura, Suite 101
Scottsdale, AZ 85258
PH: (480) 393-3640 Ex: (480) 393-3439
www.Vespro.net

RECTORY ADDITION TO ST. BERNARD OF CLAIRVAUX CATHOLIC CHURCH
10755 N. 124TH ST. - SCOTTSDALE, ARIZONA 85259
SITE PLAN



PROJECT NO: 20004
DRAWING DATE: 9/21/21
DRAWN BY: MEC
CHECKED BY: PV
DRAWING SCALE: AS SHOWN
DRAWING FILE: 20004-C-SP1.DWG

SITE PLAN
SP01
1 of 1

C.O.S. PROJECT NO. 866-PA-2020 - KEY CODE 91728 - NEW PHASE TO 38-DR-2010