



ATTACHMENT #14



**AIR PARK - REMODEL**  
**FEV2 LLC**  
7428 E KAREN DR  
SCOTTSDALE, AZ 85260

Date  
24 FEBRUARY 2023  
Revisions

STIPULATION SET  
RETAIN FOR RECORDS  
APPROVED

04/21/2023  
DATE APPROVED BY

Drawings and written material appearing  
herein constitute original and unpublished  
work of the architect and may not be  
duplicated, used, or disclosed without  
written consent of the architect.

© 2022 NELSEN PARTNERS, INC.

Project No.  
22096

**A304**  
EXTERIOR  
PERSPECTIVES





EIFS Paint



Glass/Storefront



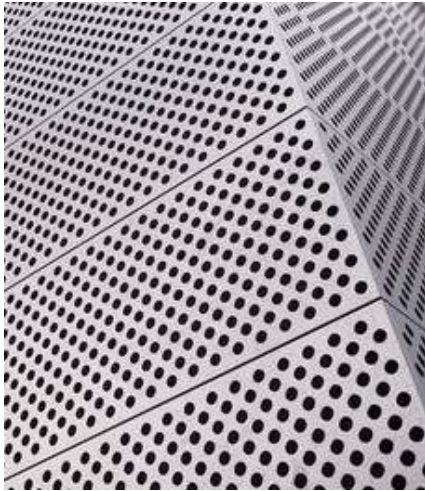
Steel Paint



Kebony Wood Batten



Matte Black Metal Panel



Perforated Metal Panel

Black Metal Panel

Glass

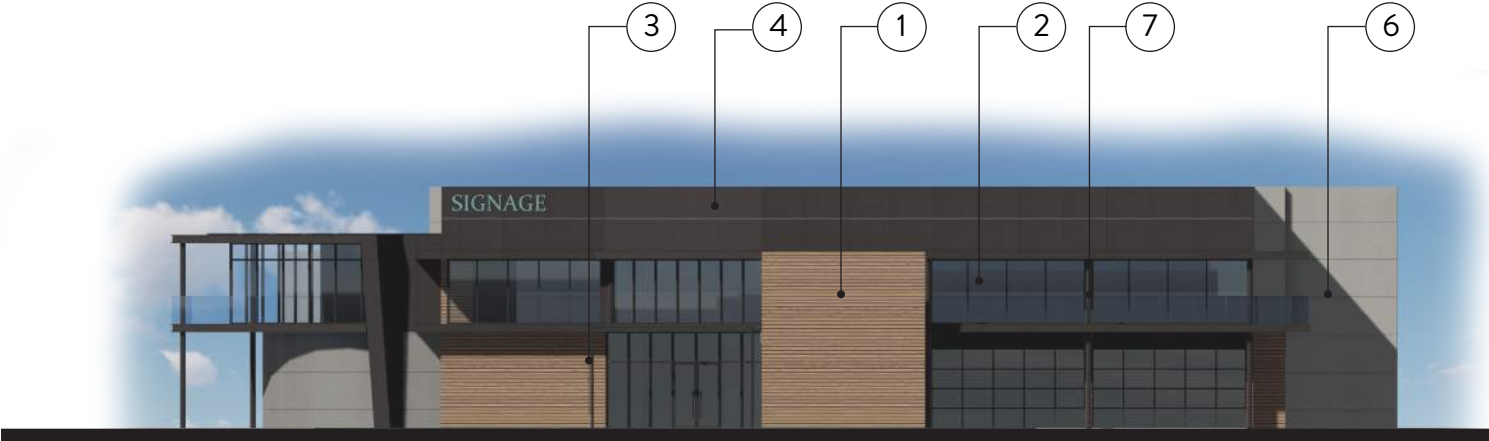
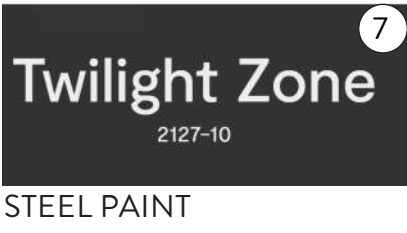
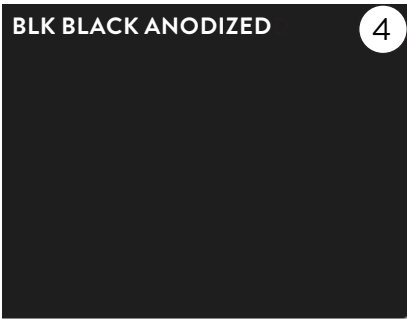
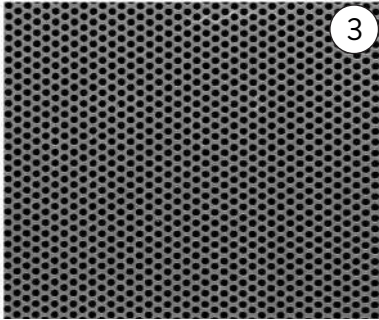


Perforated Metal Panel

Kebony Wood Batten

MATERIAL PALETTE

- 1 WD-1 Exterior Cladding "Clear"  
Kebony - 23/32" x 5 1/4" x 10'-0"
- 2 G-1 Insulated Glass - Vitro, Solarban 72  
Acuity + Acuity 1/2"
- 3 M-1 Perforated Panel
- 4 M-2 Metal composite Panel - Alpolic  
Anodized, "BLK Black Anodized"
- 5 M-3 Aluminum Storefront, Matte Black -  
Arcadia
- 6 P-1 Paint, Benjamin Moore - 1557 "Silver  
Song"
- 7 P-2 Paint, Benjamin Moore - 2127-10 "  
Twilight Zone"



# Silver Song

1557

## LRV

53.17



LRV, or Light Reflectance Value, is a measurement commonly used by design professionals—such as architects and interior designers—that expresses the percentage of light reflected from a surface. LRVs range from 0–100, with 100 being pure white and 0 being absolute black.

## Collection

Benjamin Moore Classics®





# Twilight Zone

2127-10

## LRV

5.11



LRV, or Light Reflectance Value, is a measurement commonly used by design professionals—such as architects and interior designers—that expresses the percentage of light reflected from a surface. LRVs range from 0–100, with 100 being pure white and 0 being absolute black.

## Collection

Color Preview®

