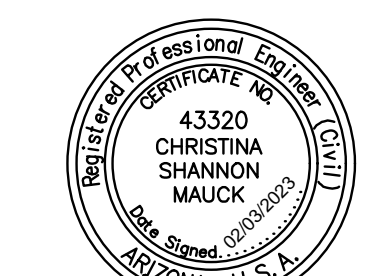
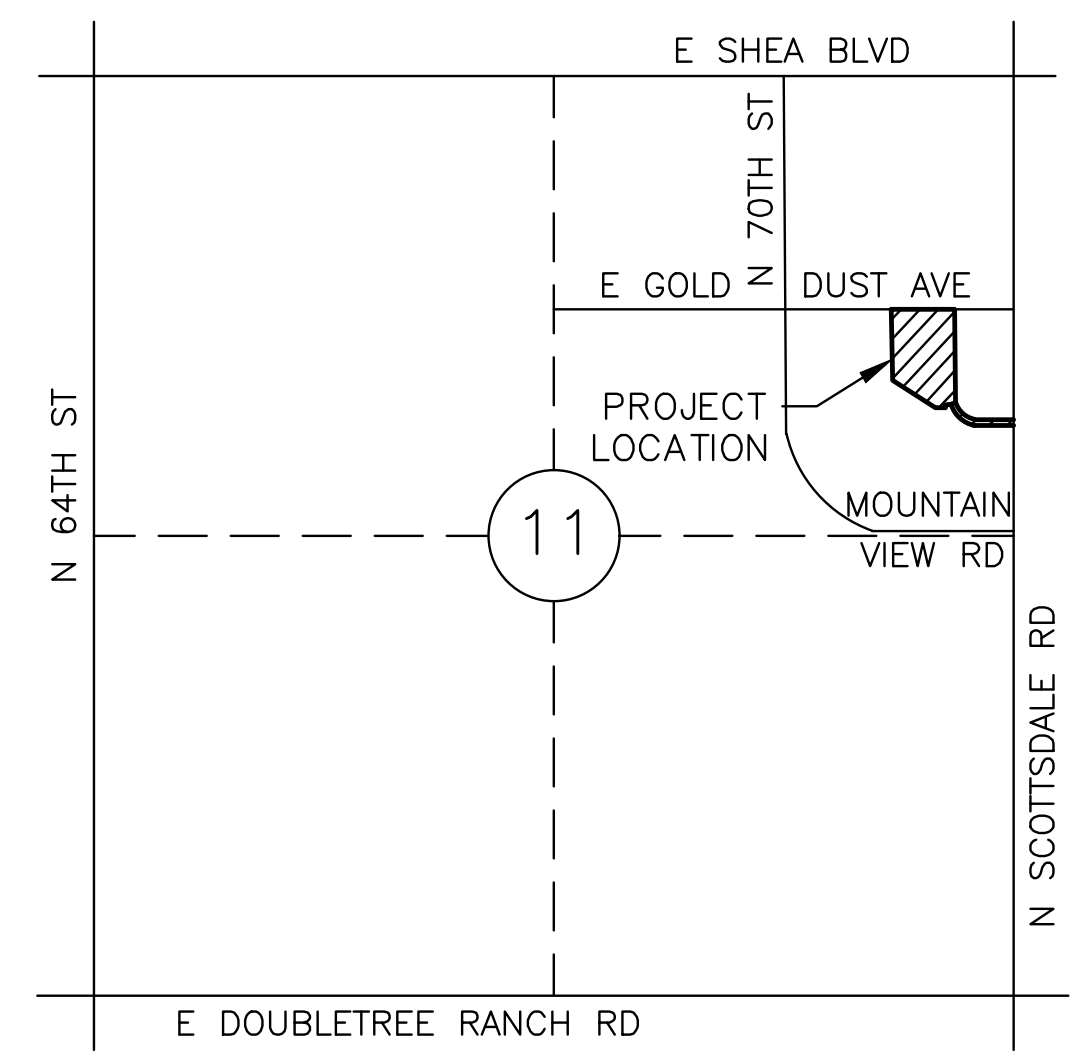




500 Washington Avenue South, Suite 1080
Minneapolis, MN 55415
p 612.339.5508 | f 612.339.5382
www.esgarch.com



C. Shannon Mauck



VICINITY MAP
SEC 11 T3N R4E

RETENTION CALCULATIONS

DRAINAGE AREA

VOLUME REQUIRED:
 $V = C * A * (P / 12)$
 $V = (0.95) * (156,124 \text{ SF}) * (0.5 \text{ IN} / 12)$
 $V = 6,180 \text{ CF}$

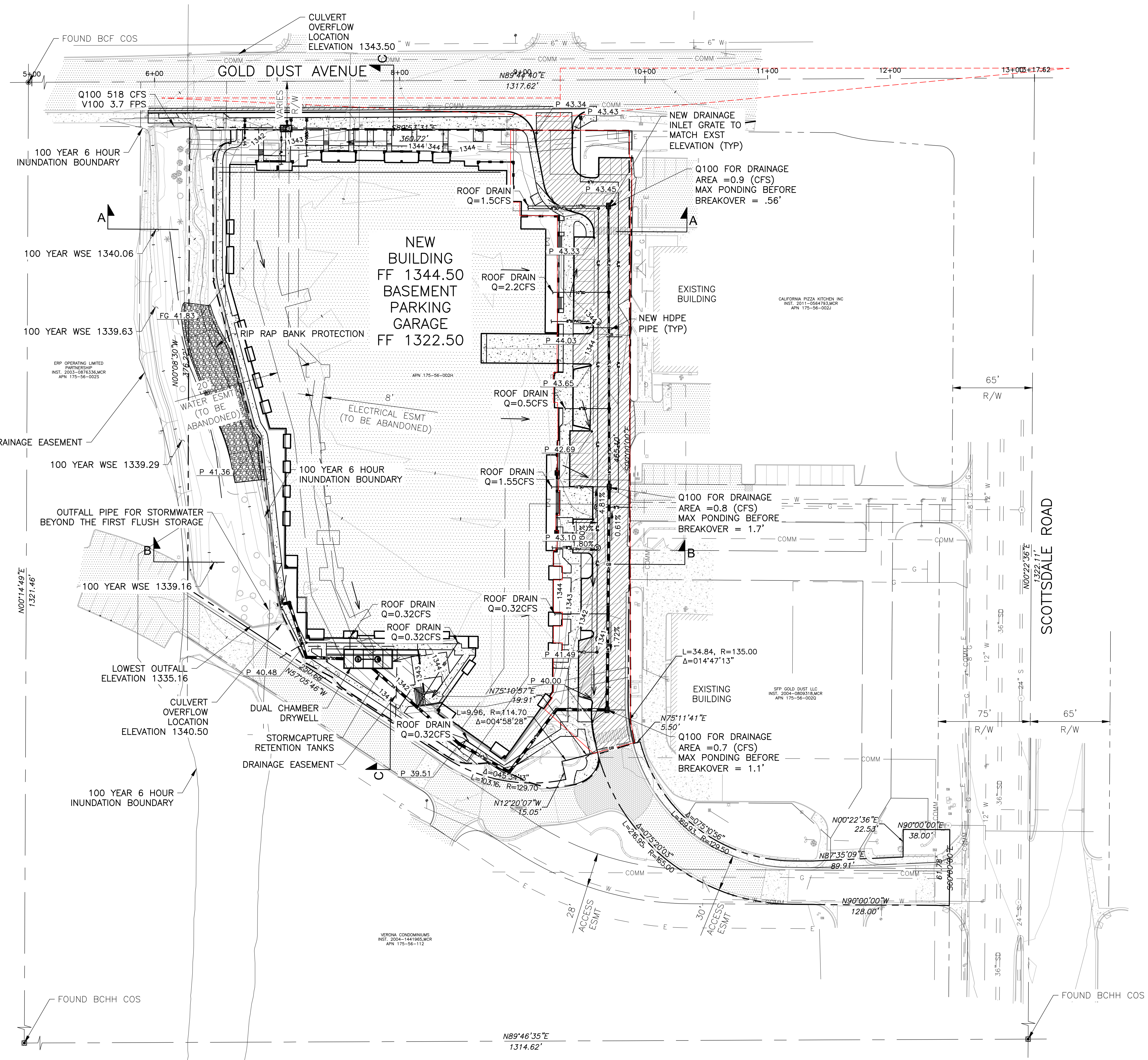
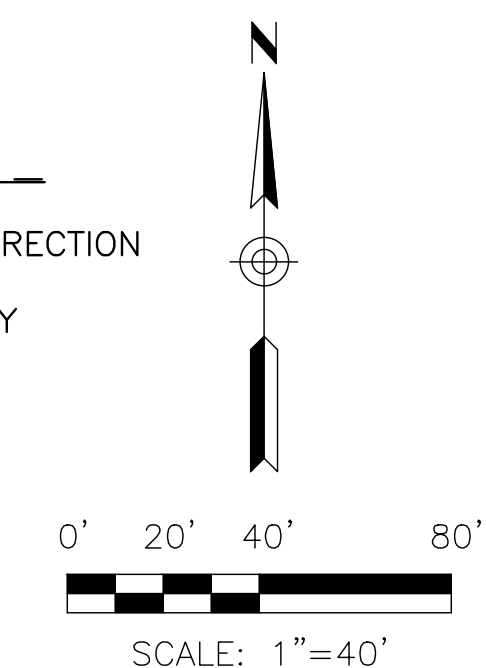
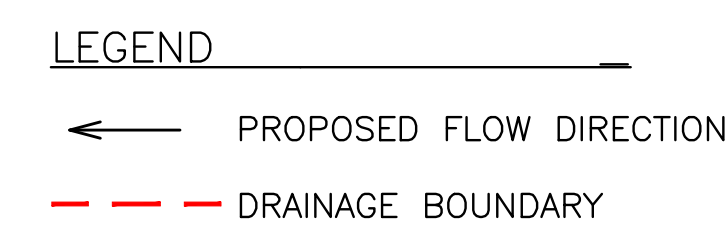
VOLUME PROVIDED:
 FIVE 14 FT TALL STORM CAPTURE RETENTION TANKS @ VOLUME PER TANK CF/TANK = 1,470 CF

TOTAL VOLUME (5) TANKS = 7,350 CF

1 DRYWELLS TO DRAIN IN 17.2 HRS

NOTE:

1. ALL CURB RAMPS ON THE SUBJECT PARCEL, AND WITHIN THE PUBLIC ROW AND EASEMENTS, TO BE INVESTIGATED FOR ADA COMPLIANCE AND UPDATED ACCORDINGLY.



G:\2021\112028_Gold_Dust_Apartments\CAD\112028_PRELIM SITE.dwg 03/02/2023

PRELIMINARY GRADING & DRAINAGE PLAN

C1.1

