



NORTH ELEVATION



EAST ELEVATION



SOUTH ELEVATION



WEST ELEVATION

RSP

RSP Architects

1220 Marshall Street NE
Minneapolis
Minnesota 55413-1036
612.677.7100
612.677.7499 fax
www.rsparch.com

Project For



FLW BLVD & HWY 101
(RAINTREE)

14900 N Pima Rd,
Scottsdale, AZ 85260

Project No.	14853F7F8A
Drawn By	MSC
Checked By	MM, MB
Date	03/29/2023

3D RENDERINGS



NORTHWEST CORNER



NORTHEAST CORNER



SOUTHEAST CORNER



SOUTHWEST CORNER

RSP

RSP Architects

1220 Marshall Street NE
Minneapolis
Minnesota 55413-1036
612.677.7100
612.677.7499 fax
www.rsparch.com

Project For



**FLW BLVD & HWY 101
(RAINTREE)**

**14900 N Pima Rd,
Scottsdale, AZ 85260**

Project No.	14853F7F8A
Drawn By	MSC
Checked By	MM, MB
Date	03/29/2023

3D RENDERINGS

03

- A. SEE SHEET #401 FOR DOOR SCHEDULE AND WINDOW TYPES.
- B. SEE SHEET #401 FOR EXTERIOR MATERIAL SCHEDULE.
- C. SEE SHEET #401 FOR EXTERIOR SOFFIT FINISH AND HEIGHT INFORMATION.
- D. SEE EXTERIOR ELEVATIONS FOR CONTROL JOINT LOCATIONS.
CONTRACTOR SHALL PROVIDE ADDITIONAL CONTROL JOINTS TO COMPLY WITH MAXIMUM SPACING REQUIREMENTS IN SPECIFICATIONS AND NATIONAL MANUFACTURE INSTITUTE. PROVIDE A CONTROL JOINT AT ALL MANUFACTURE REINSTRANT CORNERS.
- E. ALL EXPOSED STRUCTURE SHALL BE GALVANIZED AND PAINTED PT-10 U.N.O.
- F. ALL EXTERIOR SIGNAGE BY STRATUS IS ISSUED UNDER SEPARATE PACKAGE.
- G. SEE SHEET #401 FOR ADDITIONAL SITE INFORMATION, TRASH ENCLOSURE ELEVATIONS, DETAILS AND FINISHES.
- H. ALL BANK EQUIPMENT INFORMATION TO BE PROVIDED BY CON/VEIGHT TECHNOLOGIES. CONTACT INFORMATION IS PROVIDED ON COVER SHEET G000.
- I. FOR INFORMATION ON WINDOW FILM SEE SHEET #201.

NO.	DESCRIPTION
1	FIRE DEPARTMENT SHIELD SEE PLUMBING
2	THRU-ROOF ATM WITH CONNECTION TO OTHERS G.C. TO CONTACT US BANK EQUIPMENT VENDOR (CONVERTENT) TO OBTAIN CUTSHEETS AND VERIFY EQUIPMENT DIMENSIONS.
3	ENTRY CANOPY
4	METAL CAP FLASHING
5	ALUMINUM STOREFRONT MULLIONS TO MATCH SHEET METAL FLASHING COLOR
6	SCUPPER
7	KNOX KEY BOX - 4400 OR 4200 SERIES.
8	BUILDING IDENTIFICATION NUMBER - SEE SPEC.
9	5" CONCRETE CURB - SEE STRUCTURAL. CURB TO RECEIVE HAND RUBBED FINISH. EXPOSED FACE.
10	BRICK SLOPED COURSE
11	WALL HATCH LIGHT - SEE ELECTRICAL
12	SECURITY CAMERA - SEE MEP FOR POWER SUPPLY - VERIFY LOCATION IN FIELD WITH GC
13	DRIVE-THRU CANOPY
14	OVERLAP SCUPPER MATCH DRIVE THRU CANOPY COLOR
15	FORMED METAL COLUMN ENCLOSURE
16	THRU-ROOF OVERFLOW LAMBS TONGUE
17	BOLLARDS
18	IRRIGATION BACKFLOW PREVENTER - SEE PLUMBING
19	SIGNAGE BY OTHERS
20	BRICK ROWLOCK COURSE
21	OVERLAP 1/2" THICK WOOD FINS - SUPPORTED BY (3) FIXED 1-1/2" DIAMETER PIPES

C.JT - CONTROL JOINT

LIGHT 'X' - UNDER CANTON LIGHT
MANUFACTURER: BEGA
TYPE: RECESSED CEILING DOWNLIGHT
MODEL: BEGA 2 814-K35-BLK
SIZE: 6" SQUARE
LAMP: LED
DIMMING: 0-10V
MOUNTING: RECESSED
COLOR TEMP: 3500 K
VOLTAGE: 120-277V AC

LIGHT 'XB' - WALL SCONCE
MANUFACTURER: BEGA
TYPE: WALL LUMINAIRE
MODEL: BEGA 3 591-K35-BLK
SIZE: 4.5" H X 5.5" X 1.7" L
LAMP: LED
DIMMING: 0-10V
MOUNTING: WALL
COLOR TEMP: 3500 K
VOLTAGE: 120-277V AC

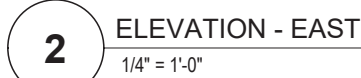
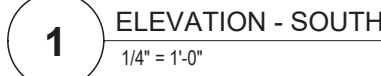
LIGHT 'XWP' - WALL PACK
MANUFACTURER: BEGA
TYPE: WALL LUMINAIRE
MODEL: BEGA 2 359-K35-BLK
SIZE: 6" W X 6" H
LAMP: LED
DIMMING: 0-10V
MOUNTING: WALL
COLOR TEMP: 3500K
VOLTAGE: 120V-277V AC

LIGHT 'XK' - EXTERIOR STOP LIGHT
MANUFACTURER: SIGNAL TECH
TYPE: STOP GO LIGHTS
MODEL: CURVANT-100-100-100-FINISH
SIZE: TCL176GR-100
SIZE: 7" H X 16" X 2.5" D
LAMP: LED
VOLTAGE: 120-277V AC

STYLE:	RECESSED
MODEL:	24 814
LAMP:	LED
MOUNTING:	RECESSED
COLOR TEMP:	3500K
VOLTAGE:	120-277 VAC

LIGHT "2'3" - 3'-0" WALL MOUNT

MANUFACTURER:	MAINTIPAR
STYLE:	3'-0" WALL MOUNT
FINISH:	WHITE
MODEL:	S151-R03M-H-02-M-0D-O-840-00
SIZE:	2'4" CANTILEVER
LAMP:	LED
VOLTAGE:	120-277V AC



<p>[EFS] MFR: DRYVIT COLOR: 103 NATURAL WHITE</p> 	<p>[CMP-2D] COMPOSITE METAL PANEL MFR: REYNOLBOND / PAC-CLAD COLOR: MEDIUM BRONZE</p> 	<p>[CMP-7A] COMPOSITE METAL PANEL MFR: REYNOLBOND / PAC-CLAD COLOR: AWARD BLUE</p> 
<p>[CMP-20A] COMPOSITE METAL PANEL MFR: REYNOLBOND / PAC-CLAD COLOR: FRISCO WHITE</p> 	<p>[FBR-21] FACE BRICK MFR: ENDICOTT BRICK COLOR: LIGHT GRAY BLENDE</p> 	<p>[MCC-20C] FORMED METAL COLUMN COVER MFR: PAC-CLAD COLOR: MEDIUM BRONZE</p> 
<p>[MCS-20A] METAL SOFFIT PANEL MFR: CERTAINTED COLOR: 8446 - CLIPPER TEAK</p> 	<p>[MCS-1B] METAL SOFFIT PANEL MFR: CERTAINTED COLOR: 0401 - LUXACOTTE LIGHTHOUSE WHITE</p> 	<p>[SMF-20D] SHEET METAL FLASHING MFR: PAC-CLAD COLOR: MEDIUM BRONZE</p> 
<p>[SMF-20D] SHEET METAL FLASHING MFR: PAC-CLAD COLOR: CHAMPAGNE METALLIC</p> 	<p>[ST-20] NATURAL STONE MFR: VALDERS STONE AND MARBLE COLOR: VALDERS BUFF</p> 	<p>ST-20 = 12" HIGH x 24" WIDE ST-20A = 8" HIGH x 24" WIDE ST-20B = 6" HIGH x 24" WIDE ST-20C = 4" HIGH x 24" WIDE</p> 

[illegible]

A401

GENERAL NOTES - EXTERIOR ELEVATIONS

- A. SEE SHEET A301 FOR DOOR SCHEDULE AND WINDOW TYPES.
B. SEE SHEET A401 FOR EXTERIOR MATERIAL SCHEDULE.
C. SEE SHEET A201 FOR EXTERIOR SOFFIT FINISH AND HEIGHT INFORMATION.
D. SEE EXTERIOR ELEVATIONS FOR CONTROL JOINT LOCATIONS. CONTRACTOR SHALL PROVIDE ADDITIONAL CONTROL JOINTS TO COMPLY WITH MAXIMUM SPACING REQUIREMENTS IN SPECIFICATIONS AND NATIONAL MASONRY INSTITUTE. PROVIDE A CONTROL JOINT AT ALL MASONRY REENTRANT CORNERS.
E. ALL EXPOSED STRUCTURE SHALL BE GALVANIZED AND PAINTED PT-10 U.N.O.
F. ALL EXTERIOR SIGNAGE BY STRATUS TO BE ISSUED UNDER SEPARATE PACKAGE.
G. SEE SHEET A001 FOR ADDITIONAL SITE INFORMATION, TRASH ENCLOSURE ELEVATIONS, DETAILS AND FINISHES.
H. ALL BANK EQUIPMENT INFORMATION TO BE PROVIDED BY CONVERGINT TECHNOLOGIES. CONTACT INFORMATION IS PROVIDED ON COVER SHEET G000.
I. FOR INFORMATION ON WINDOW FILM SEE SHEET J201.

KEYNOTES - EXTERIOR ELEVATIONS

NO.	DESCRIPTION
1	FIRE DEPARTMENT CONNECTION. SEE PLUMBING.
2	THRU-WALL ATM WITH SHROUD BY OTHERS. G.C. TO CONTACT US BANK EQUIPMENT VENDOR (CONVERGINT) TO OBTAIN CUTSHEETS AND VERIFY EQUIPMENT DIMENSIONS.
3	ENTRY CANOPY
4	METAL CAP FLASHING
5	ALUMINUM STOREFRONT MULLIONS TO MATCH SHEET METAL FLASHING COLOR.
6	SCUPPER
7	KNOX KEY BOX - 4400 OR 4200 SERIES.
8	BUILDING IDENTIFICATION NUMBER - SEE SPEC.
9	6" CONCRETE CURB - SEE STRUCTURAL. CURB TO RECEIVE HAND RUBBED FINISH, EXPOSED FACE.
10	BRICK SOLDIER COURSE
11	WALL WASH LIGHT FIXTURE - SEE ELECTRICAL.
12	SECURITY CAMERA - SEE MEP FOR POWER SUPPLY. VERIFY LOCATION IN FIELD WITH GC.
13	DRIVE-THRU CANOPY
14	OVERFLOW SCUPPER, MATCH DRIVE THRU CANOPY COLOR.
15	FORMED METAL COLUMN ENCLOSURE
16	THRU-WALL OVERFLOW LAMBS TONGUE
17	BOLLARDS
18	IRRIGATION BACKFLOW PREVENTER - SEE PLUMBING
19	SIGNAGE BY OTHERS
20	BRICK ROWLOCK COURSE
21	4" DEEP x 1/2" THICK WOOD FINS - SUPPORTED BY (3) FIXED 1-1/2" DIAMETER PIPES.

EXTERIOR ELEVATION LEGEND

C.JT - CONTROL JOINT

LIGHT FIXTURE SCHEDULE

LIGHT 'XA' - UNDER CANOPY LIGHT

MANUFACTURER: BEGA
STYLE: RECESSED CEILING DOWNLIGHT
MODEL: BEGA 24 814-K35-BLK
SIZE: 6" SQUARE
LAMP: LED
DIMMING: 0-10V
MOUNTING: RECESSED
COLOR TEMP: 3500 K
VOLTAGE: 120-277V AC

LIGHT 'XB' - WALL SCONCE

MANUFACTURER: BEGA
STYLE: WALL LUMINAIRE
MODEL: BEGA 33 591-K35-BLK
SIZE: W 4 3/8" X L 5" X H 7 1/2"
LAMP: LED
DIMMING: 0-10V
MOUNTING: WALL
COLOR TEMP: 3500 K
VOLTAGE: 120-277V AC

LIGHT 'XWP' - WALL PACK

MANUFACTURER: BEGA
STYLE: WALL LUMINAIRE
MODEL: BEGA 22 359-K35-BLK
SIZE: W 8 1/2" X L 4" X H 4 3/8"
LAMP: LED
DIMMING: 0-10V
MOUNTING: WALL
COLOR TEMP: 3500K
VOLTAGE: 120-277V AC

LIGHT 'XK' - EXTERIOR STOP GO LIGHT

MANUFACTURER: SIGNAL TECH
STYLE: STOP GO LIGHTS
FINISH: DURANODIC BRONZE FINISH
MODEL: TCL719SR-100
SIZE: 7 1/4" X 18" W X 2 1/2" D
LAMP: LED
VOLTAGE: 120-277V AC

LIGHT 'XJ' - ATM CANOPY LIGHT

MANUFACTURER: BEGA
STYLE: RECESSED
MODEL: 24 814
LAMP: LED
MOUNTING: RECESSED
COLOR TEMP: 3500K
VOLTAGE: 120-277V AC

LIGHT 'Z3' - 3'-0" WALL MOUNT

MANUFACTURER: ELLIPTIPAR
STYLE: 3'-0" WALL MOUNT
FINISH: WHITE
MODEL: S151-R03M-H-02-M-OD-Q-840-00
SIZE: 24" CANTILEVER
LAMP: LED
VOLTAGE: 120-277V AC

RSP Architects
1220 Marshall Street NE
Minneapolis
Minnesota 55413-1036
Project Contact:
Michael Brantt
Consultants

612.877.7100
612.877.7498 fax
www.rsparch.com

Certification

NOT FOR
CONSTRUCTION
03/03/2023

Name
License Number
Date Signed 03/03/2023

Project For

us bank

FRANK LLOYD WRIGHT
BOULEVARD
AND HIGHWAY 101
(RAINTREE)

14900 N Pima Rd,
Scottsdale, AZ 85260

Project No. 14853F7F8A
Drawn By MSC
Checked By DC, MB
Date 03/03/2023

NOTICE: The designs shown and described herein, including all technical drawings, graphics, and models thereof, are proprietary and cannot be copied, duplicated or commercially exploited, in whole or in part, without express written permission of RSP Architects. These are available for limited review and evaluation by clients, consultants, contractors, government agencies, vendors and office personnel only in accordance with this Notice.

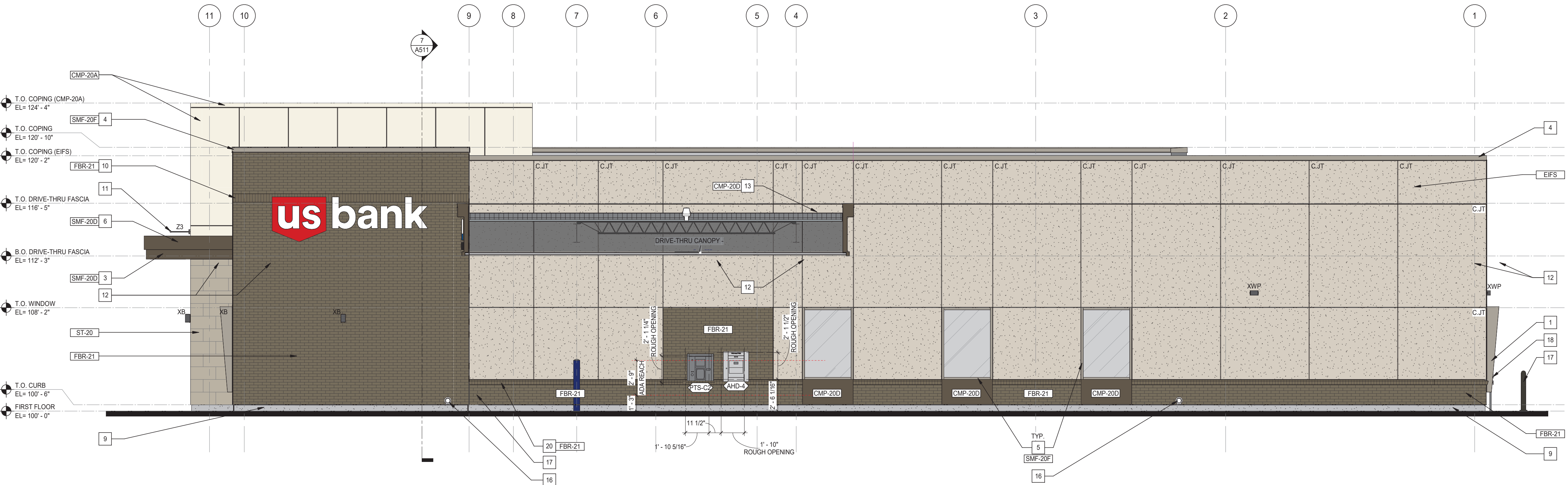
© Copyright RSP Architects 2023. All rights reserved.

Sheet Issues / Revisions

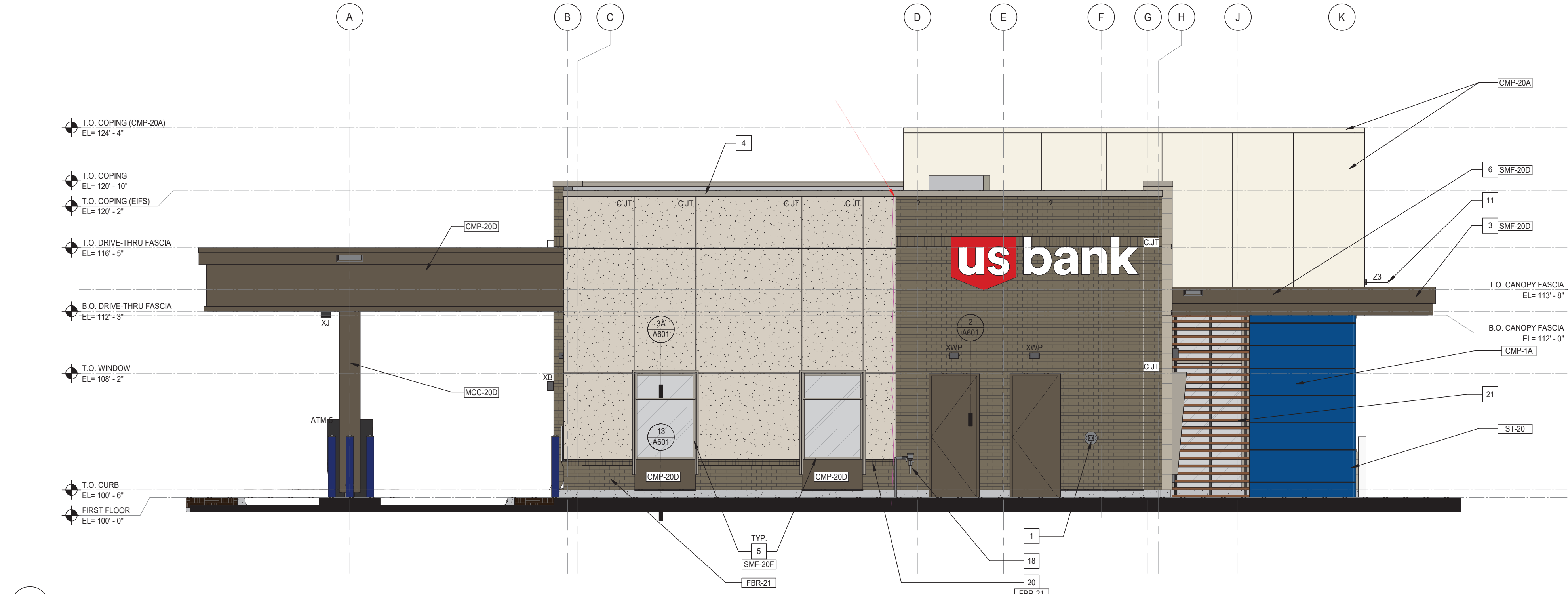
No.	Date	Description

EXTERIOR ELEVATIONS

A402



1 ELEVATION - NORTH
1/4" = 1'-0"



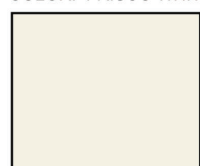
2 ELEVATION - WEST
1/4" = 1'-0"

EXTERIOR MATERIAL BOARD

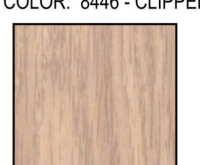
EIFS
MFR: DRYVIT
COLOR: 103 NATURAL WHITE



CMP-20A
COMPOSITE METAL PANEL
MFR: REYNOLBOND / PAC-CLAD
COLOR: FRISCO WHITE



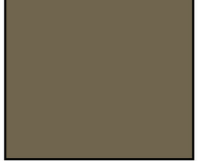
MCS-20A
METAL SOFFIT PANEL
MFR: PAC-CLAD
COLOR: 8446 - CLIPPER TEAK



SMF-20F
SHEET METAL FLASHING
MFR: PAC-CLAD
COLOR: CHAMPAGNE METALLIC



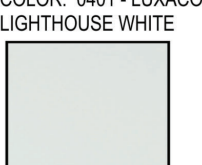
CMP-20B
COMPOSITE METAL PANEL
MFR: REYNOLBOND / PAC-CLAD
COLOR: MEDIUM BRONZE



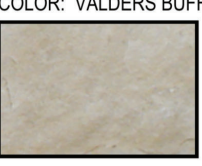
FBR-21
FACE BRICK
MFR: ENDICOTT BRICK
COLOR: LIGHT GRAY BLEND



MCS-18
METAL SOFFIT PANEL
MFR: CERTANTIDE
COLOR: 0401 - LUXACOTE LIGHTHOUSE WHITE



ST-20
NATURAL STONE
MFR: VALDERS STONE AND MARBLE
COLOR: VALDERS BUFF



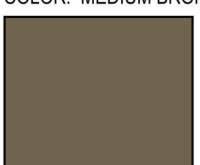
CMP-1A
COMPOSITE METAL PANEL
MFR: REYNOLBOND / PAC-CLAD
COLOR: AWARD BLUE



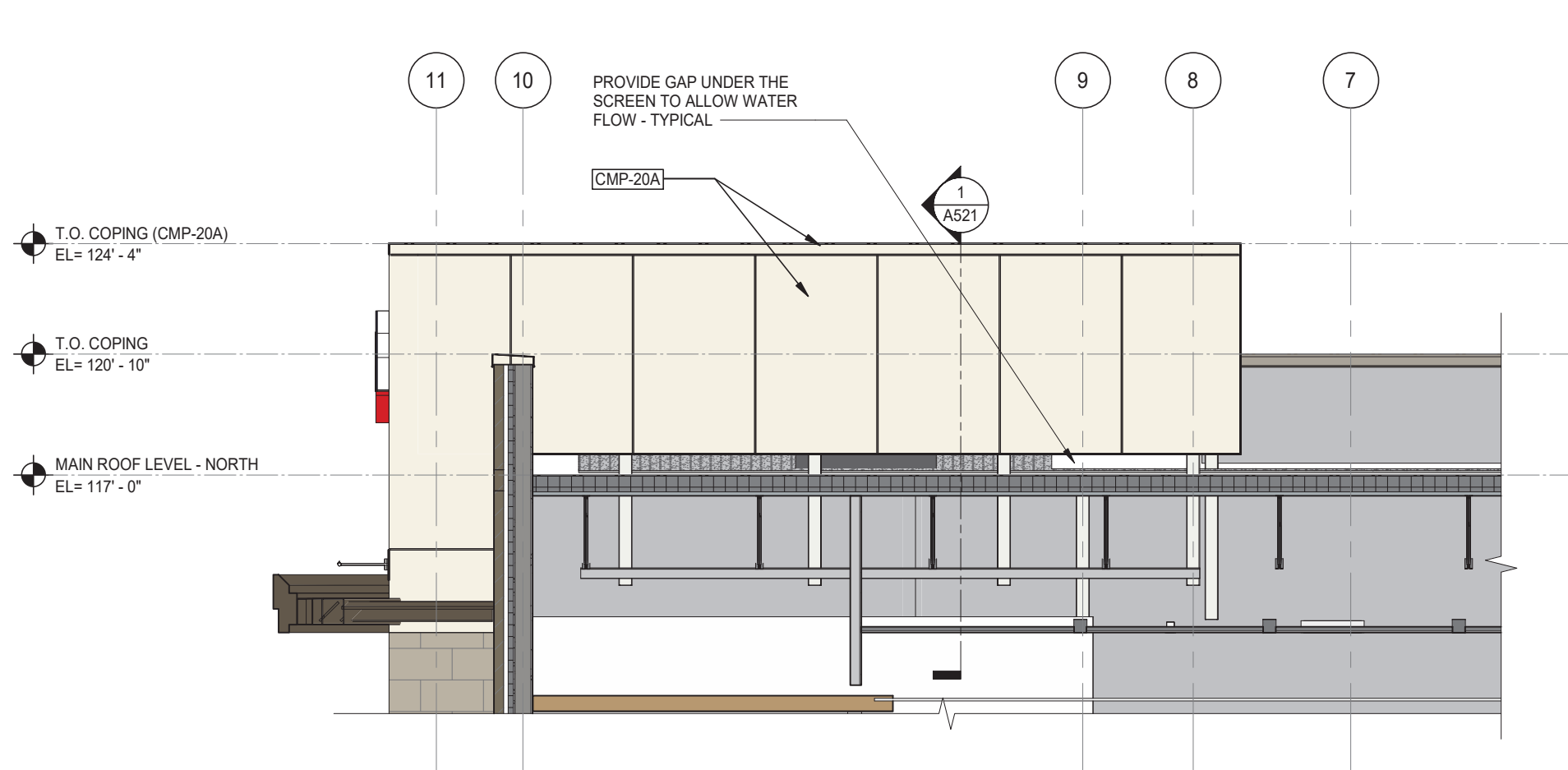
MCC-20B
FORMED METAL COLUMN COVERS
MFR: PAC-CLAD
COLOR: MEDIUM BRONZE



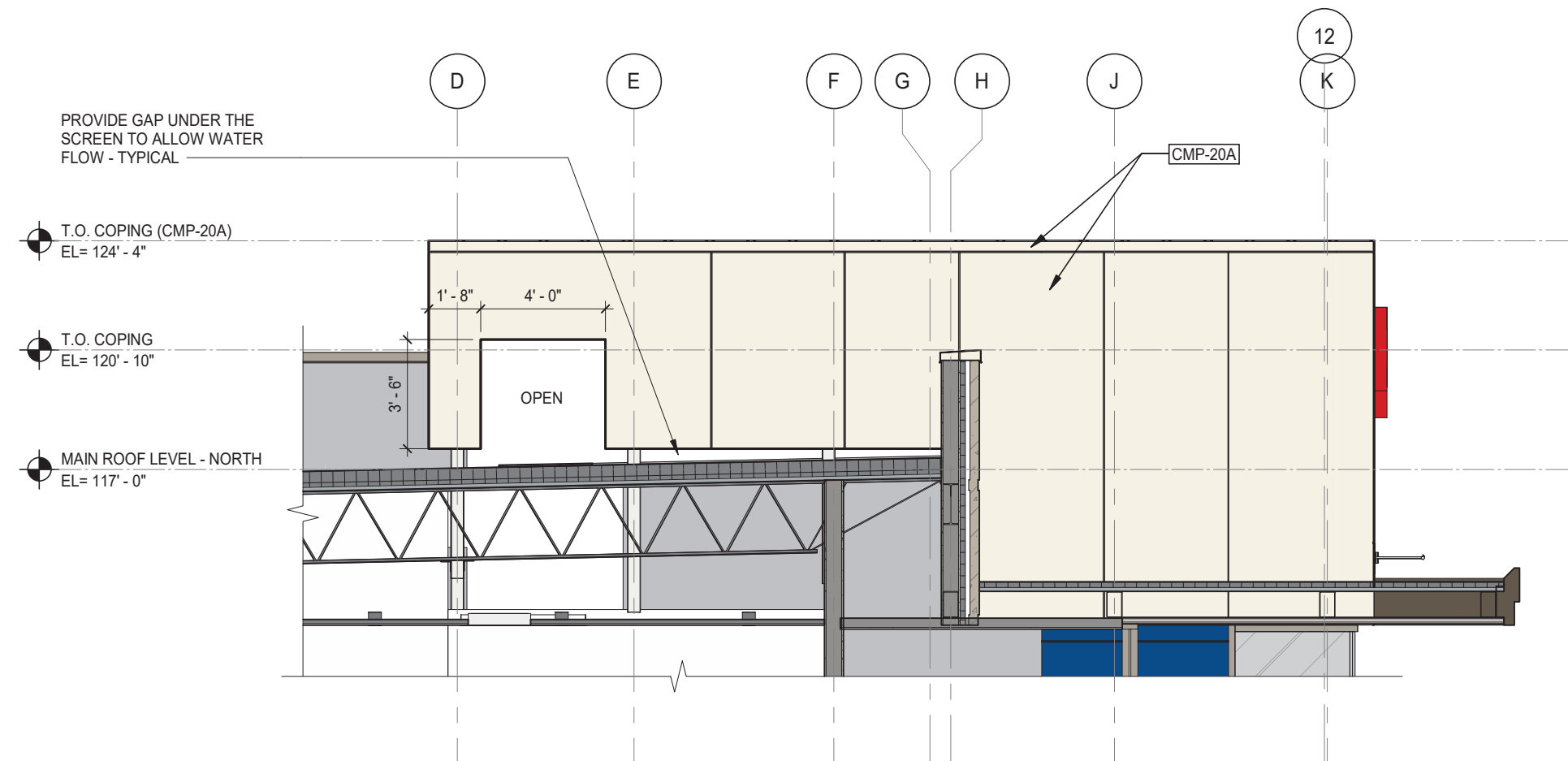
SMF-20D
SHEET METAL FLASHING
MFR: PAC-CLAD
COLOR: MEDIUM BRONZE



ST-20 = 12" HIGH x 24" WIDE
ST-20A = 8" HIGH x 24" WIDE
ST-20B = 6" HIGH x 24" WIDE
ST-20C = 4" HIGH x 24" WIDE

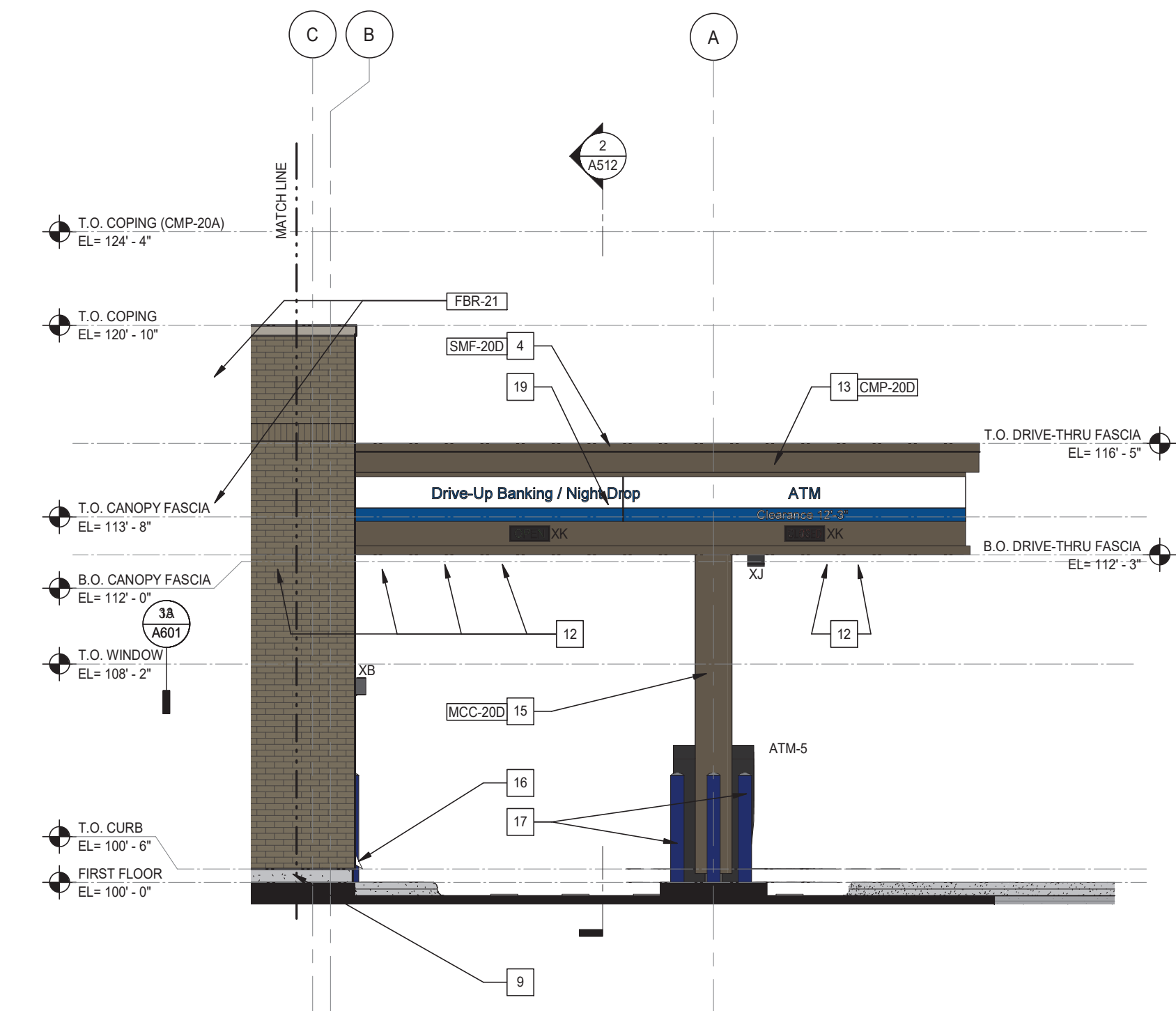


1 PENTHOUSE SCREEN ELEVATION - NORTH
1/4" = 1'-0"

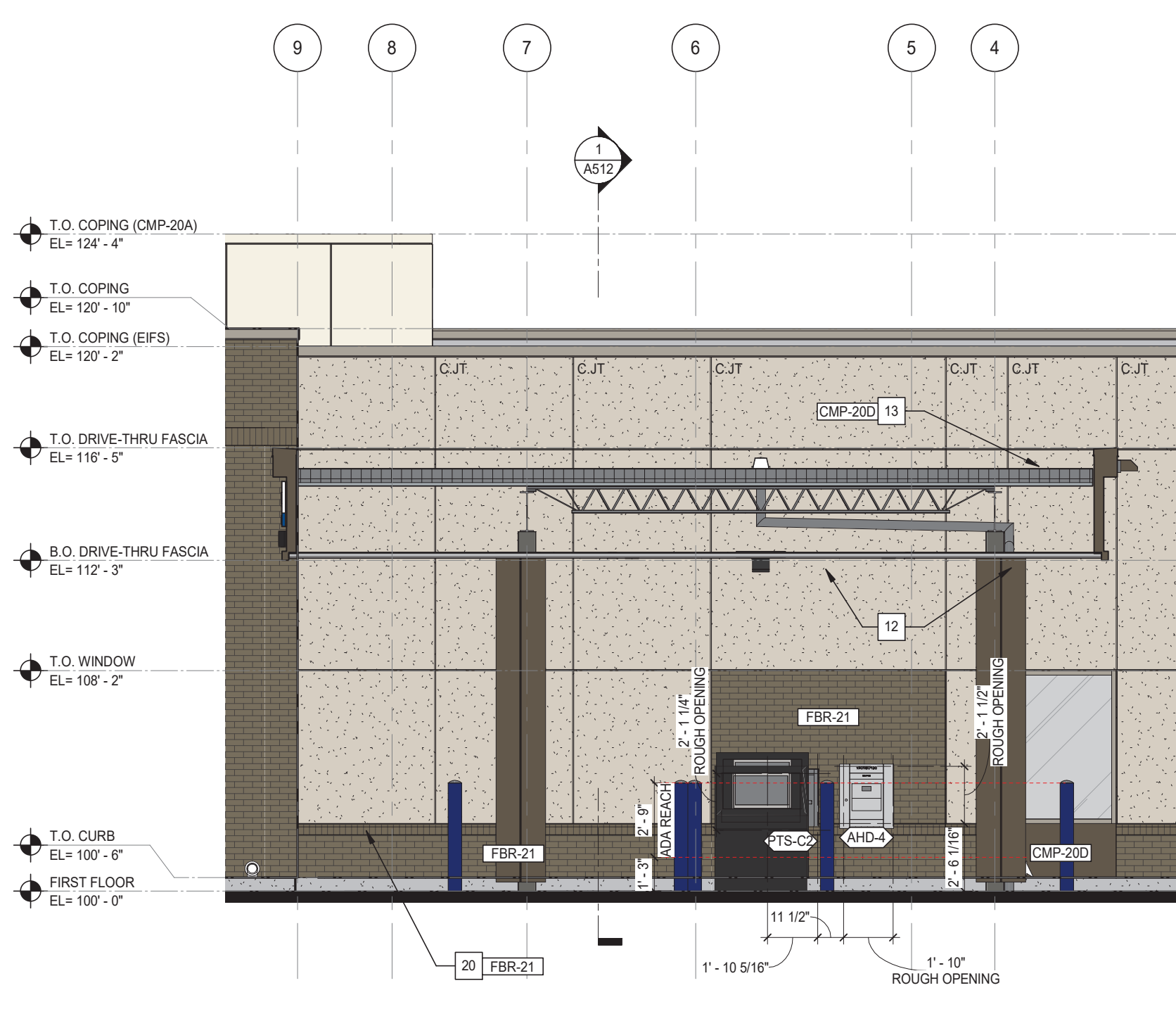


2 PENTHOUSE SCREEN ELEVATION - WEST
1/4" = 1'-0"

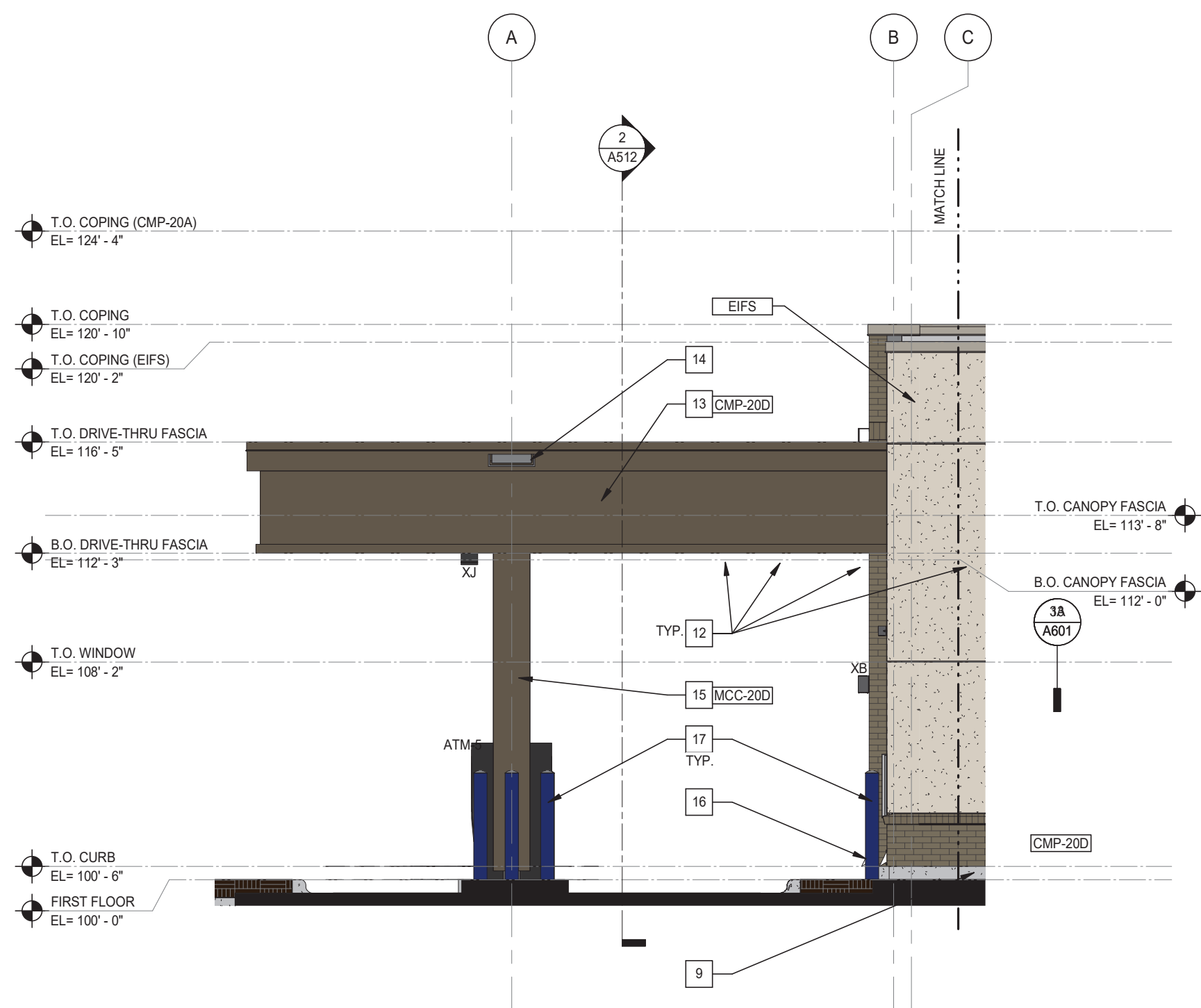
EXTERIOR MATERIAL BOARD		
EIFS MFR: DRYVIT COLOR: 103 NATURAL WHITE	CMP-20D COMPOSITE METAL PANEL MFR: REYNOLBOND / PAC-CLAD COLOR: MEDIUM BRONZE	CMP-1A COMPOSITE METAL PANEL MFR: REYNOLBOND / PAC-CLAD COLOR: AWARD BLUE
CMP-20A COMPOSITE METAL PANEL MFR: REYNOLBOND / PAC-CLAD COLOR: FRISCO WHITE	FBR-21 FACE BRICK MFR: ENDICOTT BRICK COLOR: LIGHT GRAY BLEND	MCC-20C FORMED METAL COLUMN COVERS MFR: PAC-CLAD COLOR: MEDIUM BRONZE
MCS-20A METAL SOFFIT PANEL MFR: CERTANTEED COLOR: 8448 - CLIPPER TEAK	MCS-1B METAL SOFFIT PANEL MFR: CERTANTEED COLOR: 9401 - LUXACOTE LIGHTHOUSE WHITE	SMF-20C SHEET METAL FLASHING MFR: PAC-CLAD COLOR: MEDIUM BRONZE
SMF-20F SHEET METAL FLASHING MFR: PAC-CLAD COLOR: CHAMPAGNE METALLIC	ST-20 NATURAL STONE MFR: VALDERS STONE AND MARBLE COLOR: VALDERS BUFF	ST-20 = 12" HIGH x 24" WIDE ST-20A = 8" HIGH x 24" WIDE ST-20B = 6" HIGH x 24" WIDE ST-20C = 4" HIGH x 24" WIDE



3 ELEVATION - EAST_MOUNTAIN VIEW DRIVE-THRU CANOPY
1/4" = 1'-0"



4 ELEVATION - EAST_MOUNTAIN VIEW DRIVE-THRU CANOPY
1/4" = 1'-0"



5 ELEVATION - EAST_MOUNTAIN VIEW DRIVE-THRU CANOPY
1/4" = 1'-0"

RSP

RSP Architects
1220 Marshall Street NE
Minneapolis
Minnesota 55413-1036
Project Contact:
Michael Brandt
Consultants

Certification

NOT FOR
CONSTRUCTION
03/28/2023

Name
License Number
Date Signed
Project For

us bank

FRANK LLOYD WRIGHT
BOULEVARD
AND HIGHWAY 101
(RAINTREE)

14900 N Pima Rd,
Scottsdale, AZ 85260

Project No. 14853F7F8A
Drawn By MSC
Checked By DC, MB
Date 11/15/2022

NOTICE: The designs shown and described herein, including all technical drawings, graphics, and models thereof, are proprietary and cannot be copied, duplicated or commercially exploited, in whole or in part, without express written permission of RSP Architects. These are available for limited review and evaluation by clients, consultants, contractors, government agencies, vendors and office personnel only in accordance with this Notice.

© Copyright RSP Architects 2023. All rights reserved.

Sheet Issues / Revisions

No.	Date	Description

EXTERIOR ELEVATIONS

A403



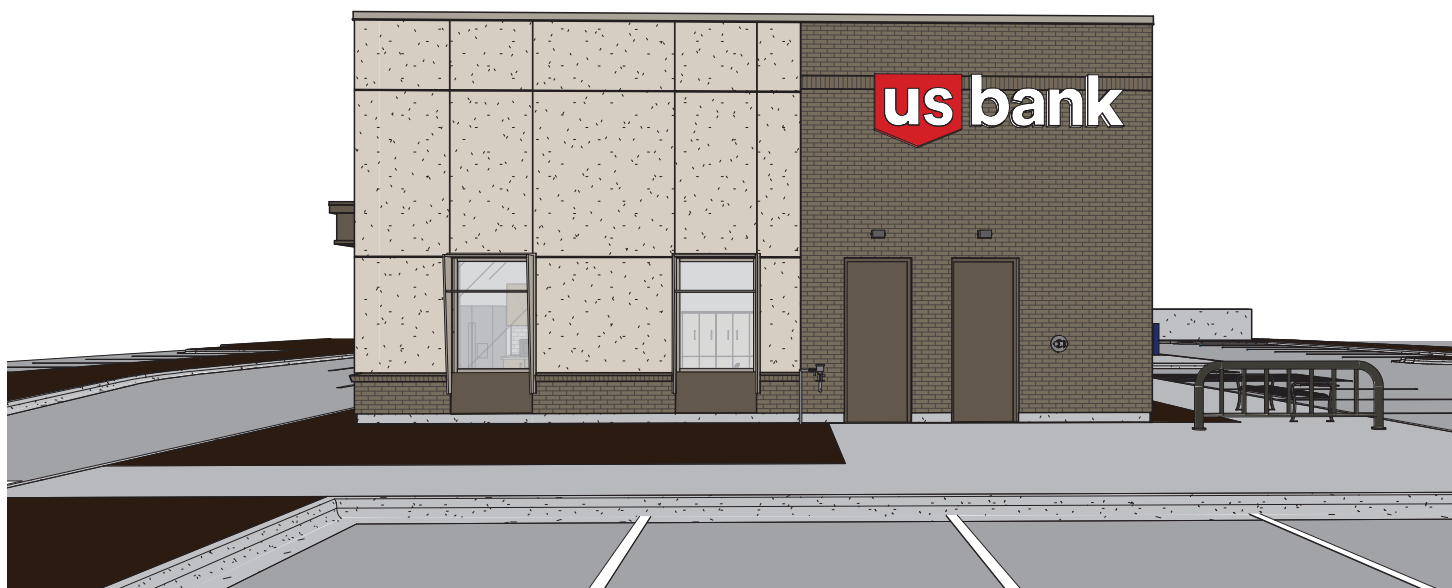
1 2023-03-08_North



2 2023-03-08_East



3 2023-03-08_South



4 2023-03-08_West



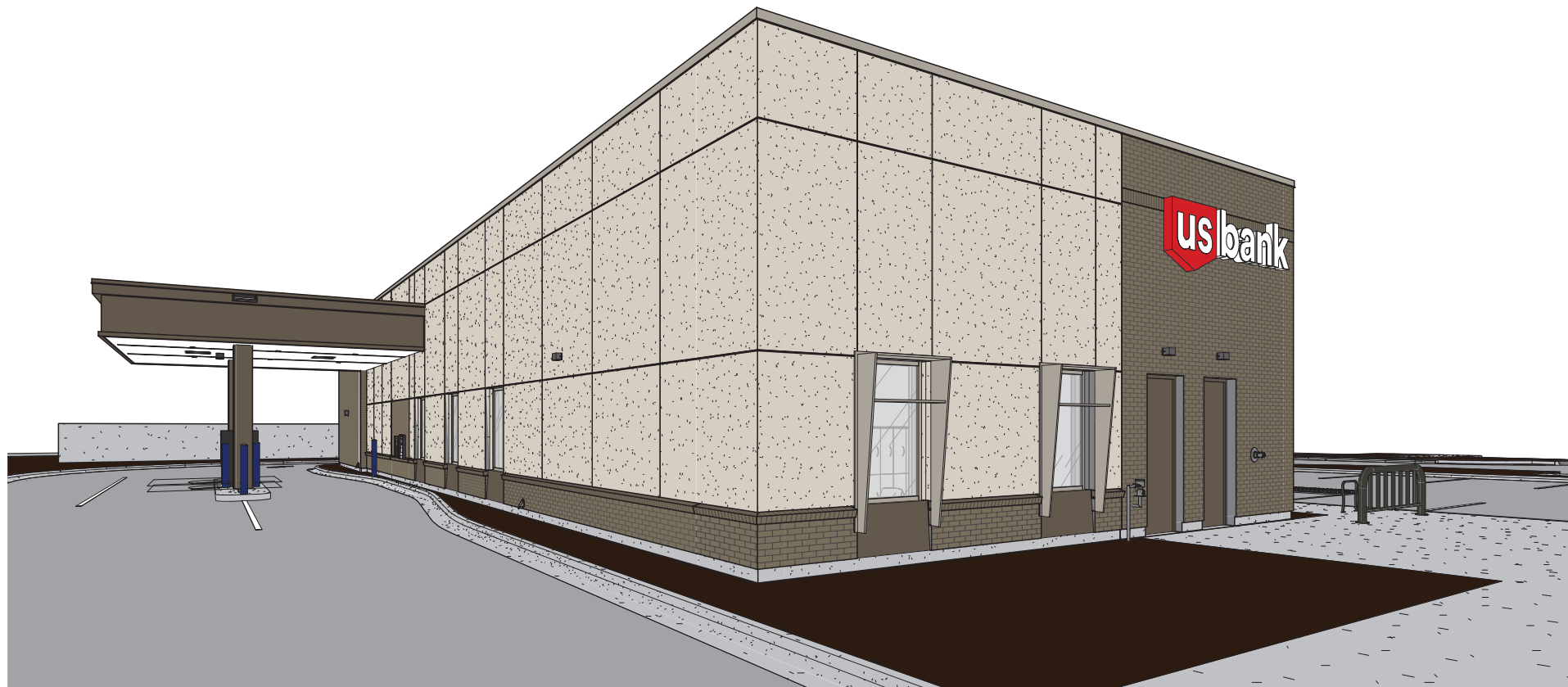
5 2023-03-08_NE Corner



6 2023-03-08_SE Corner



7 2023-03-08_SW Corner



8 2023-03-08_NW Corner

RSP

RSP Architects
1220 Marshall Street NE
Minneapolis, Minnesota 55413-1036
Project Contact: Michael Brandt
612.677.7100
612.677.7498 fax
www.rsparch.com
612.677.7202
Consultants

Certification

NOT FOR
CONSTRUCTION
03/03/2023

Name

License Number

Date Signed

Project For

us bank

FRANK LLOYD WRIGHT
BOULEVARD
AND HIGHWAY 101
(RAINTREE)

14900 N Pima Rd,
Scottsdale, AZ 85260

Project No. 14853F7F8A
Drawn By MSC
Checked By MB
Date 03/08/23

NOTICE: The designs shown and described herein, including all technical drawings, graphics, and models thereof, are proprietary and cannot be copied, duplicated or commercially exploited, in whole or in part, without express written permission of RSP Architects. These are available for limited review and evaluation by clients, consultants, contractors, government agencies, vendors and office personnel only in accordance with this Notice.

© Copyright RSP Architects 2023. All rights reserved.

Sheet Issues / Revisions

No.	Date	Description

3D VIEWS OF
EXTERIOR FOR
REFERENCE

A405