

EXHIBIT A LEGAL DESCRIPTION ROW ABANDONMENT

A PORTION OF THE NORTHEAST QUARTER OF THE NORTHWEST QUARTER OF SECTION 14, TOWNSHIP 4 NORTH, RANGE 5 EAST OF THE GILA AND SALT RIVER MERIDIAN, MARICOPA COUNTY, ARIZONA, MORE PARTICULARLY DESCRIBED AS FOLLOWS:

BEGINNING AT THE NORTH QUARTER CORNER OF SAID SECTION 14, FROM WHICH THE NORTHWEST CORNER OF SAID SECTION 14 BEARS SOUTH 89°53'57" WEST, A DISTANCE OF 2638.58 FEET;

THENCE ALONG THE EAST LINE OF SAID NORTHEAST QUARTER OF THE NORTHWEST QUARTER OF SECTION 14, SOUTH 00°32'04" EAST, A DISTANCE OF 1285.29 FEET;

THENCE LEAVING SAID EAST LINE, SOUTH 89°59'13" WEST, A DISTANCE OF 40.00 FEET;

THENCE NORTH 00°32'04" WEST, A DISTANCE OF 1230.23 FEET;

THENCE SOUTH 89°53'57" WEST, A DISTANCE OF 1249.41 FEET;

THENCE SOUTH 00°21'28" EAST, A DISTANCE OF 1227.90 FEET;

THENCE NORTH 89°59'08" WEST, A DISTANCE OF 30.00 FEET TO THE WEST LINE OF SAID NORTHEAST QUARTER OF THE NORTHWEST QUARTER OF SECTION 14;

THENCE ALONG SAID WEST LINE, NORTH 00°21'28" WEST, A DISTANCE OF 1282.84 FEET TO THE NORTH LINE OF SAID NORTHWEST QUARTER OF SECTION 14;

THENCE ALONG SAID NORTH LINE, NORTH 89°53'57" EAST, A DISTANCE OF 1319.24 FEET TO THE POINT OF BEGINNING.

CONTAINING 3.64 ACRES, MORE OR LESS



CHAD W. HUBER
RLS 35316
7740 N. 16TH STREET, SUITE 300
PHOENIX, ARIZONA 85020
PH. 602-837-5511
chad.huber@kimley-horn.com

Kimley»Horn

7740 N. 16TH ST., Suite 300
PHOENIX, AZ 85020

Tel. No. (602) 837-5511

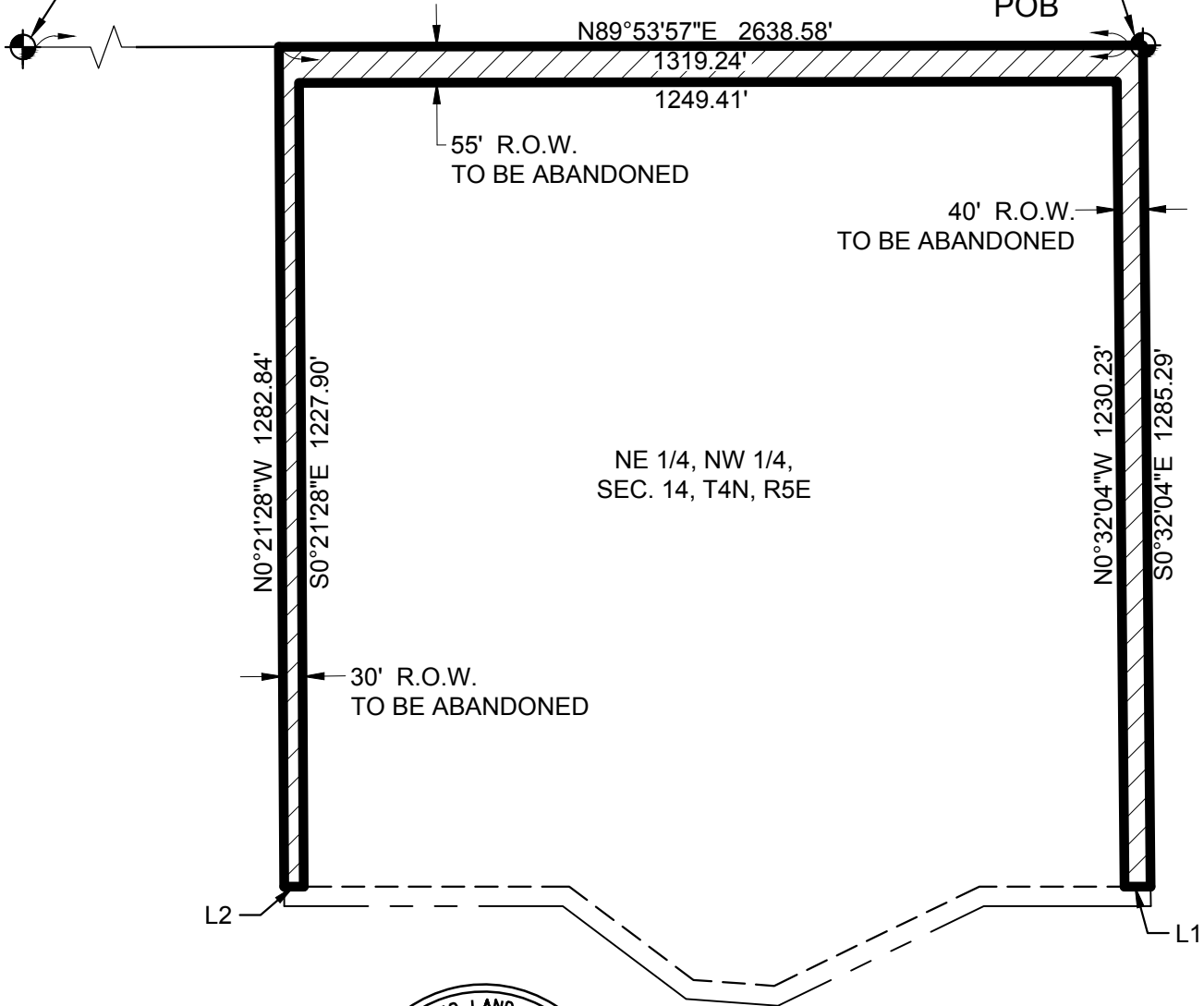
Scale	Drawn by	Checked by	Date	Project No.	Sheet No.
N/A	CWH	CWH	12/13/2021	291245004	1 OF 2

EXHIBIT B



NW CORNER
SEC. 14, T4N, R5E
GLO BC

NORTH 1/4
SEC. 14 T4N, R5E
GLO BC
POB



LINE TABLE

L1 = S89°59'13"W 40.00'
L2 = N89°59'08"W 30.00'

CHAD W. HUBER
RLS 35316
7740 N. 16TH STREET, SUITE 300
PHOENIX, ARIZONA 85020
PH. 602-837-5511
chad.huber@kimley-horn.com

Kimley»Horn

7740 N. 16TH ST, Suite 300
PHOENIX, AZ 85020

Tel. No. (602) 837-5511

Scale	Drawn by	Checked by	Date	Project No.	Sheet No.
N.T.S.	CWH	CWH	12/13/2021	291245004	2 OF 2