

NOTE: EXISTING POLES ALONG EAST PRINCESS BOULEVARD WILL BE REPLACED WITH NEW STREET LIGHTING POLES, LUMINAIRES, AND CONCRETE BASES. THE NEW FIXTURES WILL MEET THE CITY OF SCOTTSDALE STREET LIGHTING DESIGN GUIDELINES FOR A MAJOR COLLECTOR STREET AND WILL BE EITHER GE ERLH-10C300 OR SIGNIFY LUMINO: PFS-70WSL230K62-4HS LED FIXTURES.

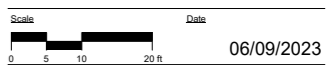
NOTE: ALL EXTERIOR LIGHTING WILL BE TURNED OFF DURING THE CITY OF SCOTTSDALE POST-CURFEW HOURS OF 10 PM UNTIL DAWN EXCEPT FOR SECURITY LIGHTING. THE LIGHTING CONTROLS WILL CONSIST OF A PROGRAMMABLE TIMER WITH ONE HOUR MANUAL OVERRIDE AND A PHOTOCELL MOUNTED ON THE NORTH SIDE OF THE GARAGE.

@ 5.56%

ELECTRIC BOX LA-65

IMEG 300 NORTH LAKE AVENUE
 17TH FLOOR
 PALMDALE, CA 91101
 P: 805.463.2800 F: 805.463.2801
 www.imegcorp.com
 IMEG CORP. RESERVES PROPRIETARY RIGHTS, INCLUDING COPYRIGHTS, TO THIS DRAWING AND THE DATA SHOWN THEREON. SAID DRAWING AND/OR DATA ARE THE EXCLUSIVE PROPERTY OF IMEG CORP. AND SHALL NOT BE USED OR REPRODUCED FOR ANY OTHER PROJECT WITHOUT THE EXPRESS WRITTEN APPROVAL AND PARTICIPATION OF IMEG CORP. ©2023 IMEG CORP.
 REF. SCALE IN INCHES PROJECT #22005306.00

SITE LIGHTING PLAN



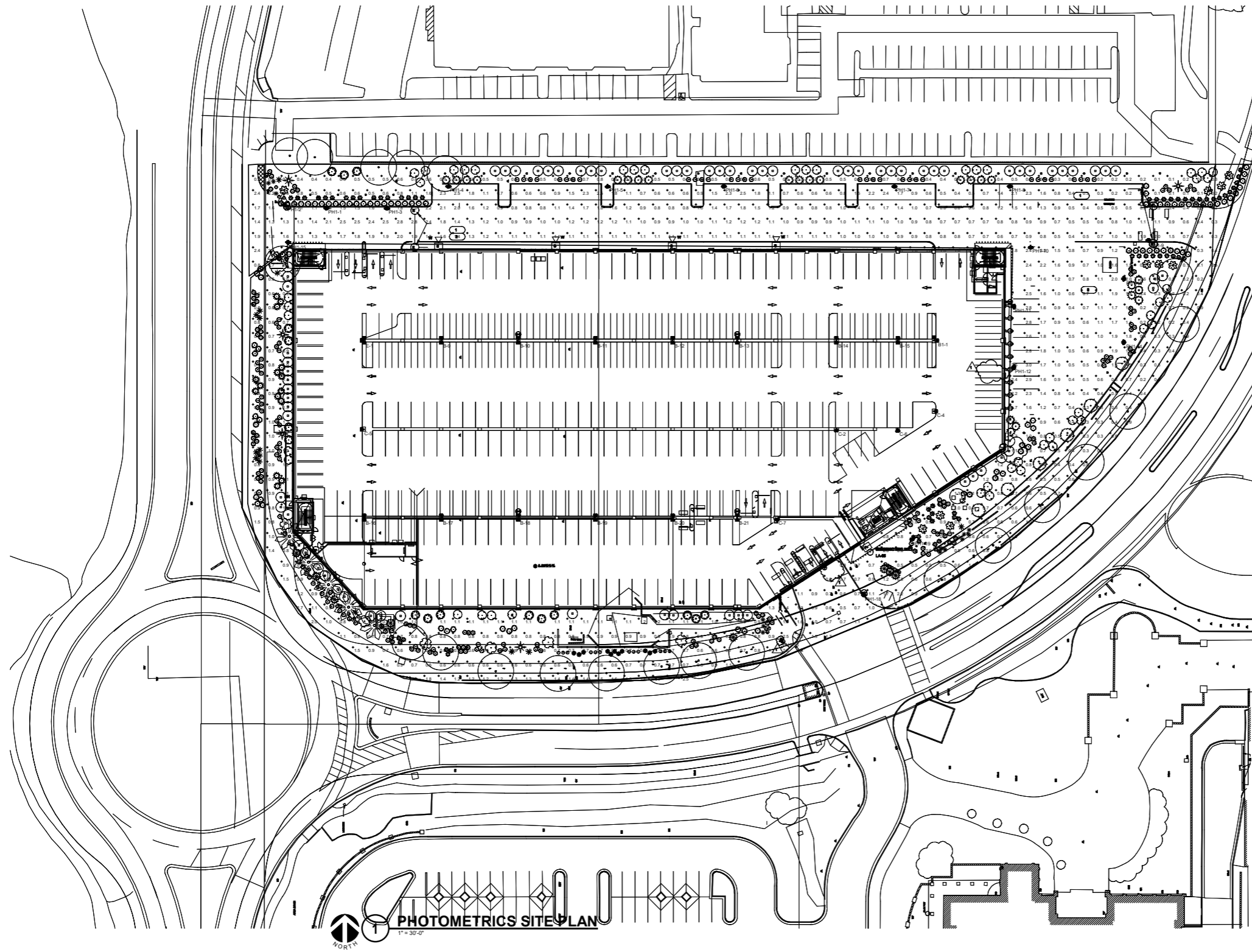
1 PHOTOMETRIC CALCULATIONS - SITE LIGHTING
 1" = 20'-0"


FAIRMONT PARKING STRUCTURE
 7575 EAST PRINCESS DRIVE, SCOTTSDALE, AZ 85255

**STIPULATION SET
 RETAIN FOR RECORDS
 APPROVED**
 08/22/2023
 DATE APPROVED BY

5-DR-2023
 07/26/2023


EL-100




PHOTOMETRICS SITE PLAN
 1" = 30'-0"

Symbol	Label	Qty	Manufacturer	Description	Notes
●	B	13	Stenberg Lighting	Pole mount light with dual head and 12' Pole BE. Provide with NLIGHT wireless sensor	Stenberg #1527LED-24-1527LED-R-24L-21-14-MDL014-FG-R7 PE HSS USL
○	C	5	Stenberg Lighting	Pole mount light with single head and 12' Pole. Provide with NLIGHT wireless sensor	Stenberg #1527LED-1A-1527LED-R-24L-27-14-MDL014-FG-R7 PE HSS USL
□	PH1	18	LIGMAN	11' pole-mounted downlight cylinder with Optics type IV downlight. Dimensions: 10" x 6" x 27" Pole: P65, 808, B-L10-G1. Driver: Integrit	Ligman USA Targa 88 Single Head Post Top Luminaire: LFA-20011 384 14 141 (Rd) (Rd) (Rd) 12027V DIM Pole: SC76 (Rd) (Rd)
■	B1	1	Stenberg Lighting	Pole mount light with dual head 80 degree and 12' Pole BE. Provide with NLIGHT wireless sensor	Stenberg #1527LED-24M-1527LED-R-24L-27-14-MDL014-FG-R7 PE HSS USL
●	E	1	Stenberg Lighting	Pole mount light with three head 80 degree and 12' Pole BE. Provide with NLIGHT wireless sensor	Stenberg #1527LED-30M-1527LED-R-24L-27-14-MDL014-FG-R7 PE HSS USL

Description	Symbol	Avg	Max	Min	Max/Min	Avg/Min
Building Entrance and Exit	+	1.0 fc	3.8 fc	0.0 fc	N/A	N/A
EAST WALL	+	N/A	N/A	N/A	N/A	N/A
EAST WALL	+	N/A	N/A	N/A	N/A	N/A
EAST WALL	+	N/A	N/A	N/A	N/A	N/A
EAST WALL	+	2.3 fc	2.3 fc	2.2 fc	1.0:1	1.0:1
EAST WALL	+	0.0 fc	0.0 fc	0.0 fc	N/A	N/A
EAST WALL	+	1.9 fc	3.0 fc	0.0 fc	N/A	N/A
EAST WALL	+	0.0 fc	0.0 fc	0.0 fc	N/A	N/A
EAST WALL	+	0.0 fc	0.0 fc	0.0 fc	N/A	N/A
EAST WALL	+	0.0 fc	0.0 fc	0.0 fc	N/A	N/A
EAST WALL	+	2.6 fc	4.5 fc	0.0 fc	N/A	N/A
EAST WALL	+	0.0 fc	0.0 fc	0.0 fc	N/A	N/A
EAST WALL	+	0.0 fc	0.0 fc	0.0 fc	N/A	N/A
EAST WALL	+	N/A	N/A	N/A	N/A	N/A
EAST WALL	+	N/A	N/A	N/A	N/A	N/A
NORTH WALL	+	1.2 fc	1.5 fc	0.0 fc	N/A	N/A
SOUTH WALL	+	N/A	N/A	N/A	N/A	N/A
SOUTH WALL	+	N/A	N/A	N/A	N/A	N/A
SOUTH WALL	+	N/A	N/A	N/A	N/A	N/A
SOUTH WALL	+	0.0 fc	0.0 fc	0.0 fc	N/A	N/A
SOUTH WALL	+	2.3 fc	5.5 fc	0.0 fc	N/A	N/A
SOUTH WALL	+	0.0 fc	0.0 fc	0.0 fc	N/A	N/A
SOUTH WALL	+	0.0 fc	0.1 fc	0.0 fc	N/A	N/A
SOUTH WALL	+	0.0 fc	0.0 fc	0.0 fc	N/A	N/A
SOUTH WALL	+	0.0 fc	0.0 fc	0.0 fc	N/A	N/A
SOUTH WALL	+	0.0 fc	0.0 fc	0.0 fc	N/A	N/A
SOUTH WALL	+	0.0 fc	0.0 fc	0.0 fc	N/A	N/A
SOUTH WALL	+	2.0 fc	4.1 fc	0.0 fc	N/A	N/A
WEST WALL	+	0.0 fc	0.0 fc	0.0 fc	N/A	N/A


 300 NORTH LAKE AVENUE
 17TH FLOOR
 PALMDALE, CA 91101
 P: 805.463.2800 F: 805.463.2801
 www.imegcorp.com

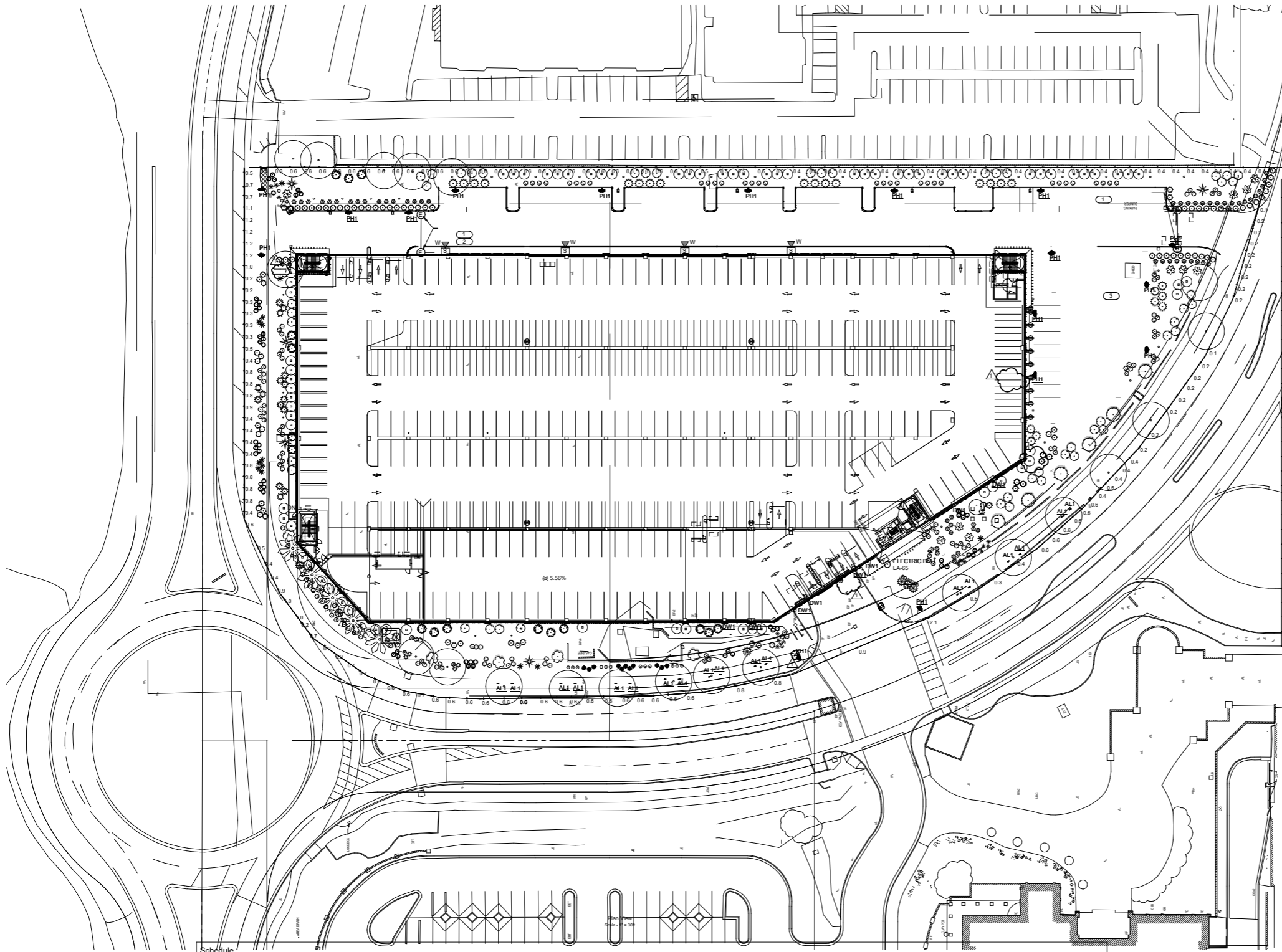
IMEG CORP. RESERVES PROPRIETARY RIGHTS, INCLUDING COPYRIGHTS, TO THIS DRAWING AND THE DATA SHOWN THEREON. SAID DRAWING AND/OR DATA ARE THE EXCLUSIVE PROPERTY OF IMEG CORP. AND SHALL NOT BE USED OR REPRODUCED FOR ANY OTHER PROJECT WITHOUT THE EXPRESS WRITTEN APPROVAL AND PARTICIPATION OF IMEG CORP. ©2023 IMEG CORP.

REF. SCALE IN INCHES: 1" = 30'-0"
 PROJECT #2205336.00

HORIZONTAL ILLUMINANCE ANALYSIS
 Scale: 0 5 10 20 ft
 Date: 06/09/2023

FAIRMONT PARKING STRUCTURE
 7575 EAST PRINCESS DRIVE, SCOTTSDALE, AZ 85255

5-DR-2023
07/26/2023 **EL-110**



Statistics						
Description	Symbol	Avg	Max	Min	Max/Min	Avg/Min
Building Entrance and Exit	+	0.8 fc	3.0 fc	0.0 fc	N/A	N/A
Perimeter wall vertical	+	0.1 fc	0.1 fc	0.0 fc	N/A	N/A
Perimeter wall vertical	+	0.2 fc	0.3 fc	0.1 fc	3.0:1	2.0:1
Perimeter wall vertical	+	0.3 fc	0.3 fc	0.0 fc	N/A	N/A
Perimeter wall vertical	+	0.0 fc	0.0 fc	0.0 fc	N/A	N/A
Perimeter wall vertical	+	0.1 fc	0.1 fc	0.0 fc	N/A	N/A
Perimeter wall vertical	+	0.0 fc	0.1 fc	0.0 fc	N/A	N/A
Perimeter wall vertical	+	0.0 fc	0.0 fc	0.0 fc	N/A	N/A
Perimeter wall vertical	+	0.0 fc	0.5 fc	0.0 fc	N/A	N/A
Perimeter wall vertical	+	0.1 fc	0.3 fc	0.0 fc	N/A	N/A
Perimeter wall vertical	+	0.2 fc	0.3 fc	0.0 fc	N/A	N/A
Perimeter wall vertical	+	0.2 fc	0.3 fc	0.0 fc	N/A	N/A
Perimeter wall vertical	+	0.2 fc	0.5 fc	0.0 fc	N/A	N/A
Perimeter wall vertical	+	0.1 fc	0.5 fc	0.0 fc	N/A	N/A
Perimeter wall vertical	+	0.2 fc	0.5 fc	0.0 fc	N/A	N/A
Perimeter wall vertical	+	0.1 fc	0.3 fc	0.0 fc	N/A	N/A
Perimeter wall vertical	+	0.3 fc	0.3 fc	0.0 fc	N/A	N/A
Perimeter wall vertical	+	0.0 fc	0.4 fc	0.0 fc	N/A	N/A
Perimeter wall vertical	+	0.0 fc	0.3 fc	0.0 fc	N/A	N/A
Perimeter wall vertical	+	0.2 fc	0.3 fc	0.2 fc	1.5:1	1.0:1
Vertical Perimeter	+	N/A	N/A	N/A	N/A	N/A
Vertical Perimeter	+	N/A	N/A	N/A	N/A	N/A
Vertical Perimeter	+	N/A	N/A	N/A	N/A	N/A
Vertical Perimeter	+	N/A	N/A	N/A	N/A	N/A
Vertical Perimeter	+	N/A	N/A	N/A	N/A	N/A
Vertical Perimeter	+	N/A	N/A	N/A	N/A	N/A
Vertical Perimeter	+	N/A	N/A	N/A	N/A	N/A
Vertical Perimeter	+	N/A	N/A	N/A	N/A	N/A
Vertical Wall Entrance	+	0.4 fc	0.6 fc	0.0 fc	N/A	N/A

Symbol	Label	Image	Quantity	Manufacturer	Catalog Number	Description	Lamp	Filename	Number Lamps	Lumens Per Lamp	Lumen Multiple	Light Loss Factor	Wattage	Efficiency	Distribution	Plot	Notes
•	AL1		18	Hydrel Aspen	ASPEN SS P1 80CRI 27K 120 20DEG WSL KM	Bullet Accent Light for Landscaping	LED 27K		1	22463	1	0.9	11	100%			
○	DW1		8	Hinkley	Mist 1225BZ	Large Wall Mount Lantern	GU10LED		1	500	1	0.9	6.5	100%			
○	PH1		17	LIGMAN	TA-20011-T3-W40	Tango 36 Post top luminaire one side	16 LED 4000K	PH1 TA-20011-T3-W40.IES	1	2722	1	0.9	37.8	100%			

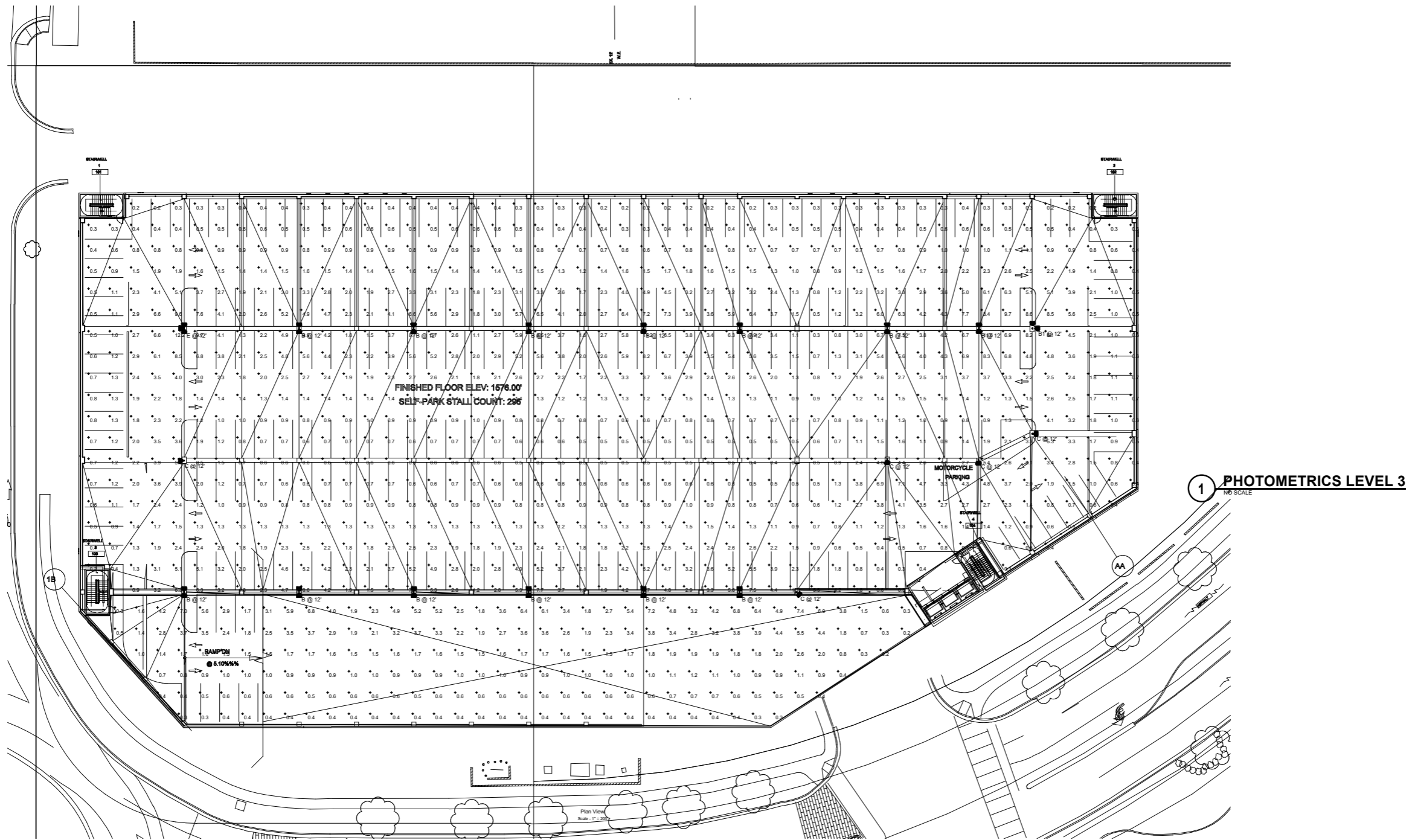
IMEG 300 NORTH LAKE AVENUE
1725 ELIJAH
PASADENA, CA 91101
P: 651-453-2800 F: 651-453-2801

IMEG CORP. RESERVES PROPRIETARY RIGHTS, INCLUDING COPYRIGHTS, TO THIS DRAWING AND THE DATA SHOWN THEREON. SAID DRAWING AND/OR DATA ARE THE EXCLUSIVE PROPERTY OF IMEG CORP. AND SHALL NOT BE USED OR REPRODUCED FOR ANY OTHER PROJECT WITHOUT THE EXPRESS WRITTEN APPROVAL AND PARTICIPATION OF IMEG CORP. ©2023 IMEG CORP.

REF. SCALE IN INCHES PROJECT #2205336.00

PERIMETER VERTICAL LIGHT TRESPASS

Scale: 0 5 10 20 ft Date: 06/09/2023



Schedule						
Label	Quantity	Manufacturer	Catalog Number	Description	Light Loss Factor	Wattage
B	13	Sternberg Lighting	1527LED 2A-1527LED-R-24L-27-T4- MDL014-FG-R7 PE HSS USL	Pole mount light with dual head and 12' Pole BE. Provide with NLIGHT wireless sensor	0.65	176.2
C	5	Sternberg Lighting	1527LED 1A-1527LED-R-24L-27-T4- MDL014-FG-R7 PE HSS USL	Pole mount light with single head and 12' Pole. Provide with NLIGHT wireless sensor.	0.65	88.1
B1	1	Sternberg Lighting	1527LED 2A-1527LED-R-24L-27-T4- MDL014-FG-R7 PE HSS USL	Pole mount light with dual head (90 degree) and 12' Pole BE. Provide with NLIGHT wireless sensor	0.65	176.2
E	1	Sternberg Lighting	1527LED 3A90-1527LED-R-24L-27-T4- MDL014-FG-R7 PE HSS USL	Pole mount light with three head(90 degree) and 12' Pole BE. Provide with NLIGHT wireless sensor	0.65	264.3

Statistics						
Description	Symbol	Avg	Max	Min	Max/Min	Avg/Min
Driveway	+	1.8 fc	7.4 fc	0.2 fc	37.0:1	9.0:1
PARKING	+	2.0 fc	12.2 fc	0.2 fc	61.0:1	10.0:1

IMEG 300 NORTH LAKE AVENUE
12TH FLOOR
PALMDALE, CA 91101
P: 661-483-2800 F: 661-483-2801

IMEG CORP. RESERVES PROPRIETARY RIGHTS, INCLUDING COPYRIGHTS, TO THIS DRAWING AND THE DATA SHOWN THEREON. SAID DRAWING AND/OR DATA ARE THE EXCLUSIVE PROPERTY OF IMEG CORP. AND SHALL NOT BE USED OR REPRODUCED FOR ANY OTHER PROJECT WITHOUT THE EXPRESS WRITTEN APPROVAL AND PARTICIPATION OF IMEG CORP. ©2023 IMEG CORP.

REF. SCALE IN INCHES PROJECT #2205336.00

PHOTOMETRIC CALCULATIONS - LEVEL 3

Scale: 0 5 10 20 ft Date: 06/09/2023

FAIRMONT PARKING STRUCTURE
7575 EAST PRINCESS DRIVE, SCOTTSDALE, AZ 85255

EL-130