

**the GEORGE Hotel**  
7330 North Pima Road, Scottsdale, AZ 85258


**7330 North Pima Road, Scottsdale, AZ 85258**

1. NEW ROOF ACCESS HATCH
2. NEW ROOF MECH. EQUIP. TOP OF UNIT, BELOW EXISTING PARAPET
3. EXISTING TO REMAIN
4. REMOVE EXISTING SPANISH TILE CANOPY; NEW CANOPY ROOF OVER EXPANDED EXISTING DINING AREA
5. "SKY HOLE" FOR NEW TIER
6. NEW GYM
7. NEW POOL CAFE
8. MATCH CUSTOM ALUMINUM FABRICATION FINISH TO ALUMINUM WINDOW SYSTEM, 2"x6" MEMBERS

building 2

1 REVISIONS MADE FOR CONNECTION BETWEEN GYM AND CAFE

north

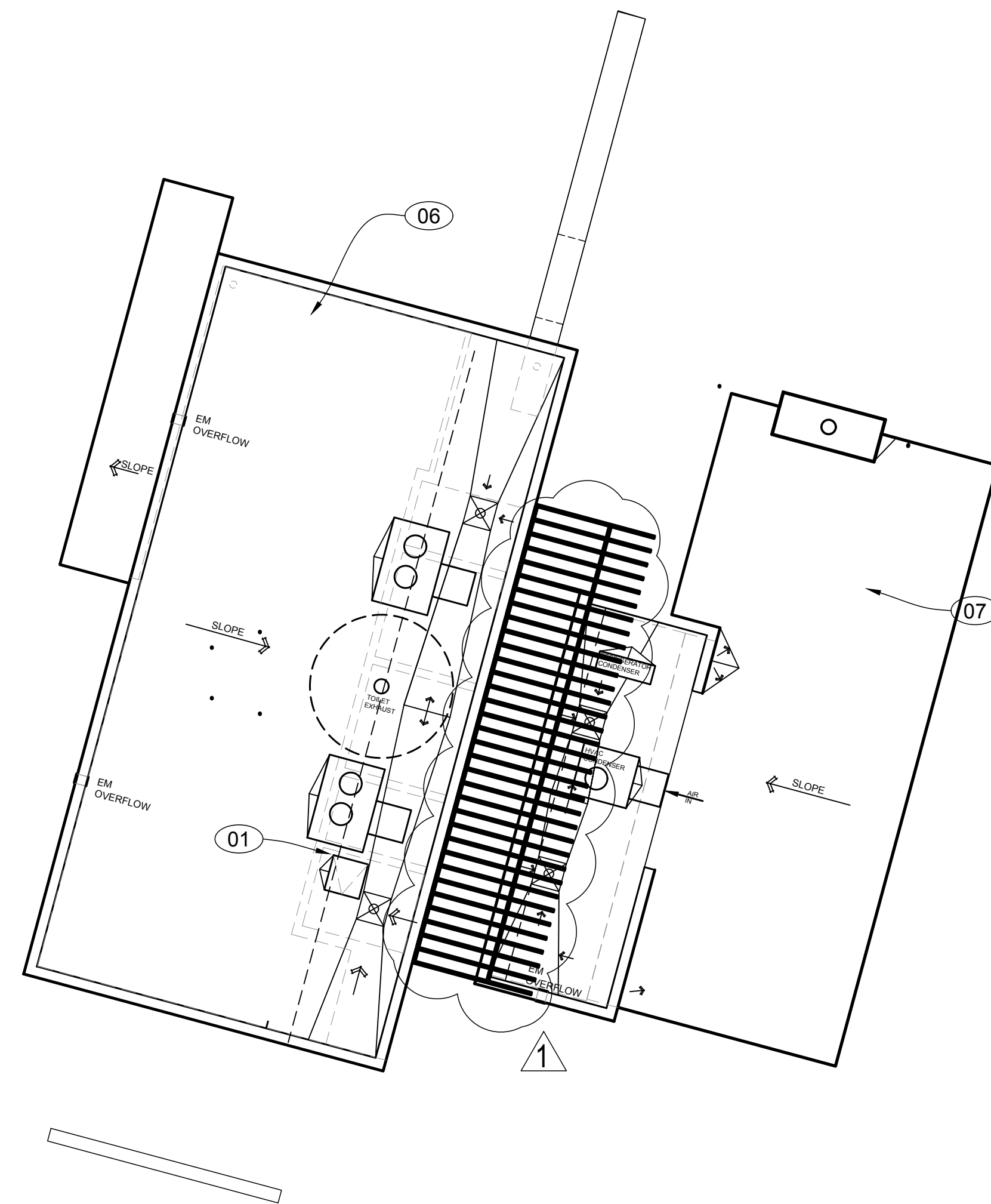


**1** | scale: 0' 4' 12'

These documents establish the general standards of quality and detail for developing a negotiated construction contract. Be advised that all trades are responsible for reviewing and referring to the complete set of drawings. This is an integrated set and sheets should not be bid or build from individually.

### a3.4

CDS plan check numbers:  
Pre-Application Number: **430-PA-2021**  
**219-PA-2021**







2020 E Broadway Blvd.  
Tucson, AZ 85719  
architecture 520.795.9888  
interiors

# the GEORGE Hotel

7330 North Pima Road, Scottsdale, AZ 85258

PROPOSED MATERIALS AND FINISHES: (SHEETS a6.1 - a6.8)

- Glazing  
Vetro (formerly PPG glass)  
Solarban 70 (formerly Solarban 70XL)  
clear + clear-glass insulating glass unit (low-e)
- Aluminum windows and doors  
Window system frame and adjacent break metal and visible flashing  
Equal to Arcadia anodized  
Color: standard dark bronze AB-7
- Wood  
Exterior Thermory - stabilized autoclaved wood systems  
Clear pine exterior cladding standard stock (JEM)  
Texture: smooth  
Color: natural golden brown  
Size: 79 x 5.5
- Paint  
Dunn-Edwards  
Color: DET638 Sepia Tone  
Prefinished trim pieces shall match
- Stone Veneer  
Cultured stone - El Dorado Stone  
Texture: Hewn Stone  
Coronado Stone  
6" split limestone - white  
EIFS - exterior insulated finish systems  
Dryvit "outsulation" systems  
Integral color systems  
113 Amarillo White  
Texture: "sandblast"
- Masonry  
Sioux City brick  
Color: flint hills and black roman  
Module: maximum  
ASTM Specifications c-216 grade SW type FBA  
Sicilian Bond pattern

KEYNOTES: (SHEETS a6.1 - A6.8)

- E.I.F.S system, see chapter 31, E.I.F.S item #6
- veneer system, see chapter 31, stone veneer item #5
- fire department connection
- "FDC" sign per city of Scottsdale standards
- fire alarm flow alarm
- drain down
- exterior recessed light dark sky compliant
- common centerline
- EIFS finished horizontal surface - typical at perimeter edge, see chapter 31, E.I.F.S. item #6
- control joint - typical at perimeter edge
- metal shade structure - east/west facing glass shade per energy code, see chapter 31, item #4
- pre-finished metal cap flashing, see chapter 31, item #4
- line of roof beyond
- pre finished glazing system, see chapter 31, items 1 & 2
- safety-rail hazard rail system
- patio wall - veneer system, see chapter 31, item #5
- line of wall beyond
- flashing - pre-finished system, see chapter 31, item #4
- stair tower beyond
- elevator override beyond
- screen beyond, see chapter 31, item #4
- existing Spanish clay tile to remain
- existing metal cap flashing with new painted finish
- existing stucco with new painted finish
- existing exterior door - repair defects + damage and refinish existing color
- existing window to remain
- new masonry patio wall - see detail 1 and 2/a6.8
- existing door frame to remain. new painted finish to match adjacent stucco wall semi-gloss finish on door frame
- new metal lattice for landscape climbing vine, painted finish
- new rail at disabled ramp
- new wall sconce, 100% cut-off dark-sky compliant, light color temp 2.800k 4" max projection from wall, recessed junction box
- new stucco screen wall
- vertical landscaping see landscape dwgs
- existing fire department connection to remain
- new fire alarm equipment
- existing door and frame, refinish to match new color of adjacent wall
- wood - vertical (rain screen application)
- recessed down lights 100% cut-off, dark-sky compliant, light color temp 2.800k
- new wall sconce, 100% cut-off dark-sky compliant light color temp 2.800k, mount 8" below top of patio wall and 8" from edge (± 5'-6" above F.F.F.)
- wood paneling system over existing guard rail, see chapter 31 wood system 03
- emergency overflow scupper
- pool safety glass fence
- match custom aluminum fabrication finish to match aluminum window system. 2"x8" members.

## note

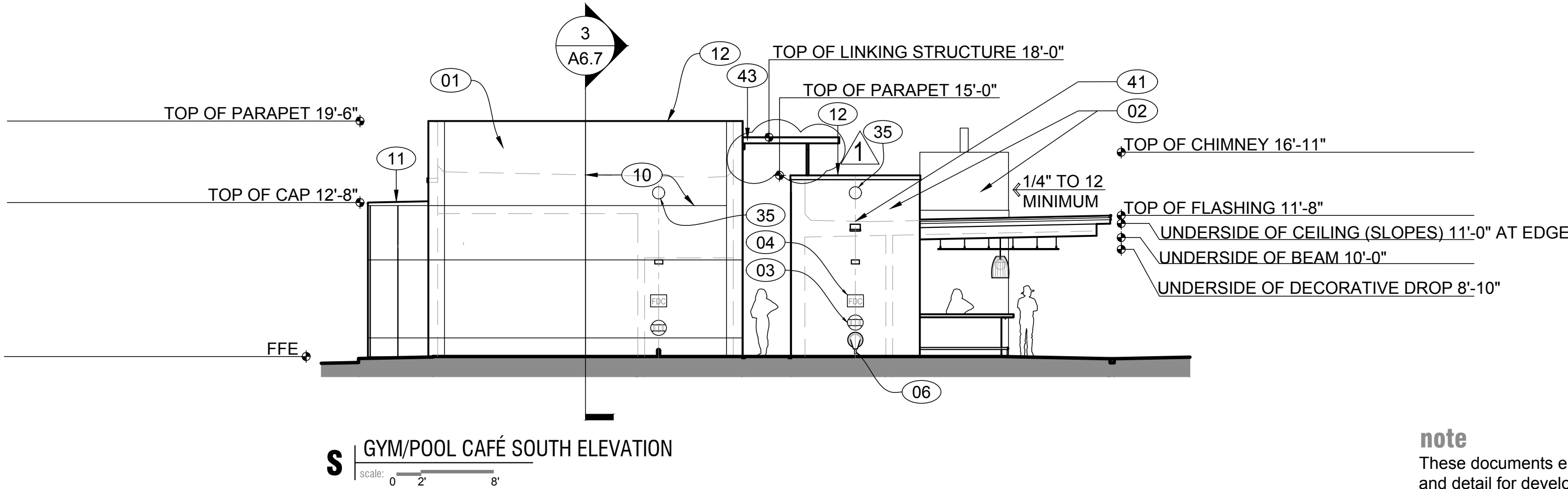
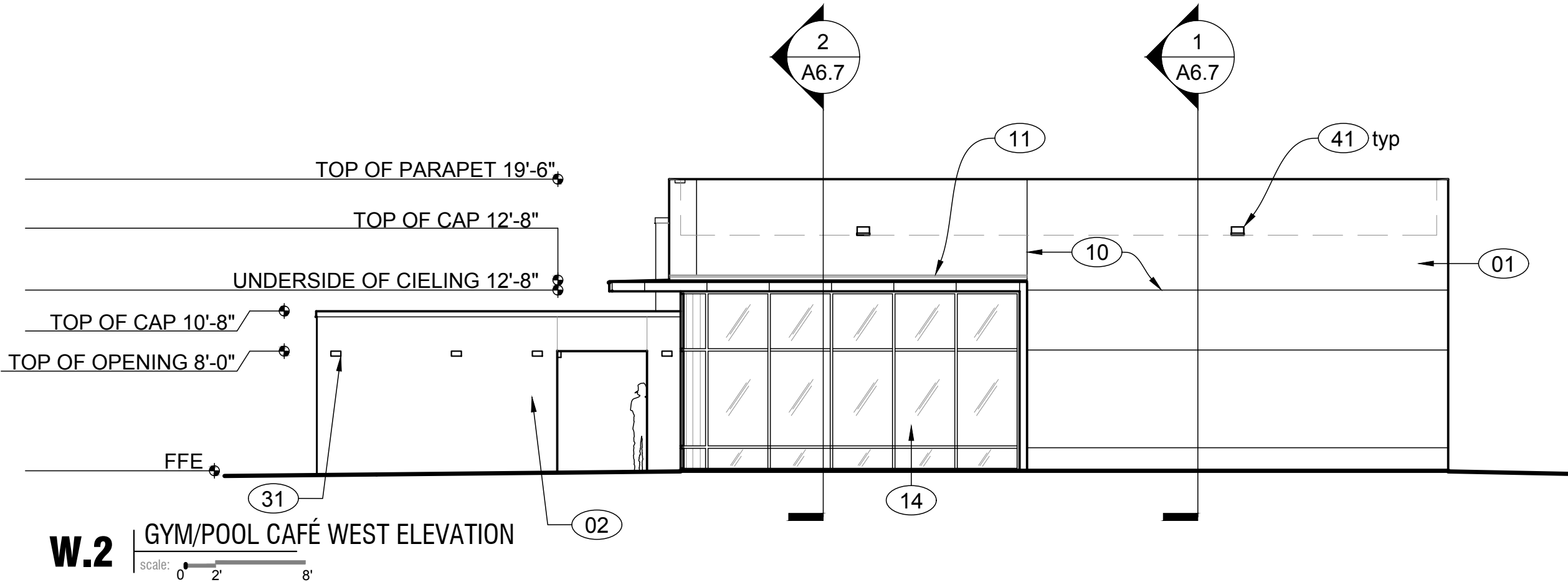
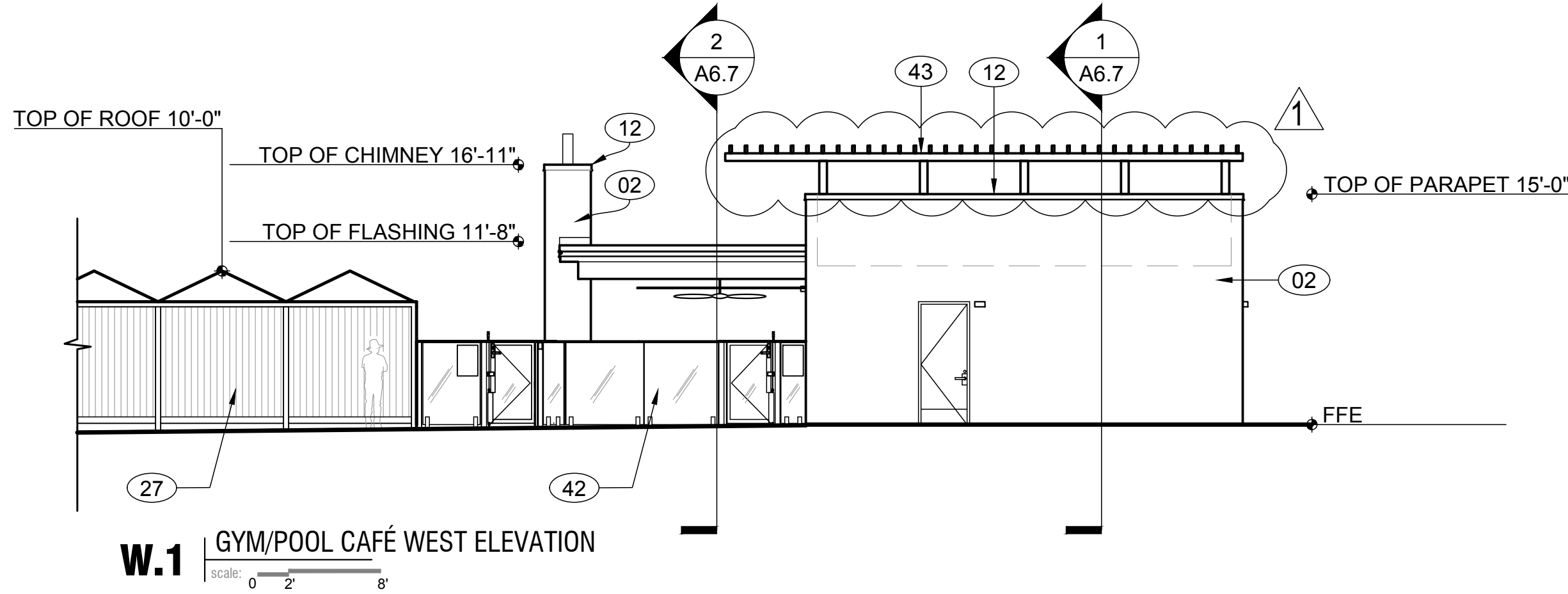
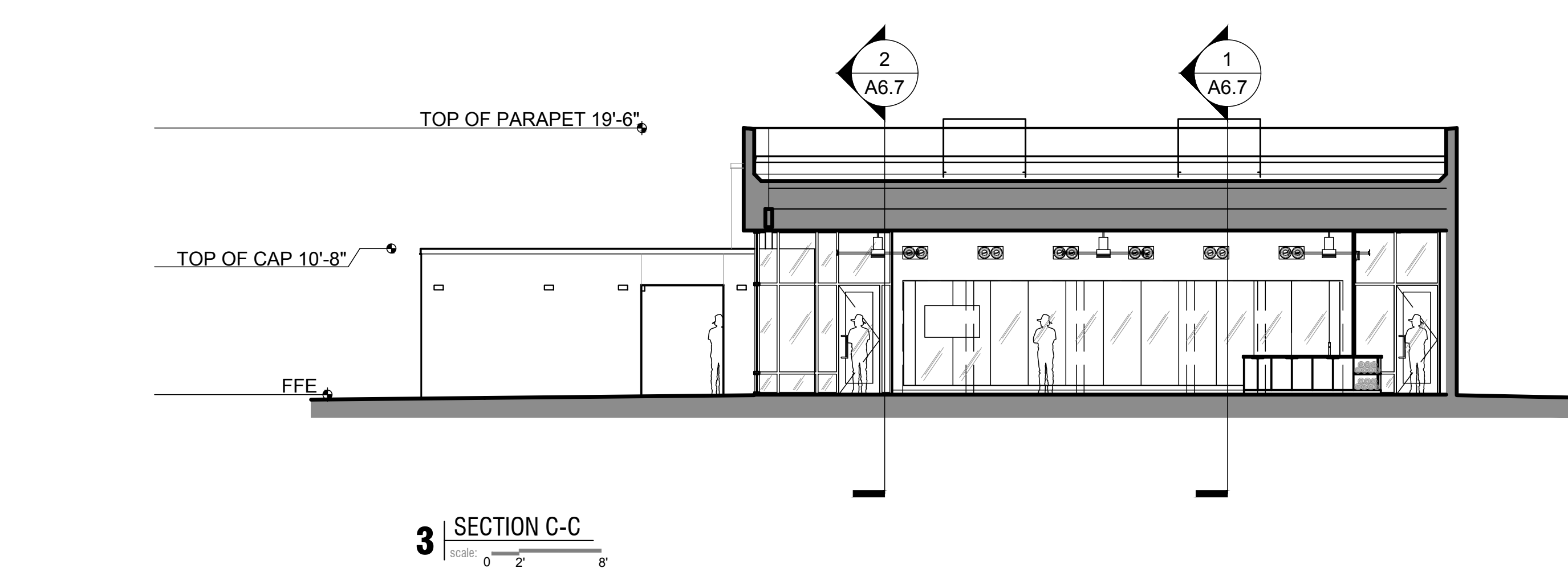
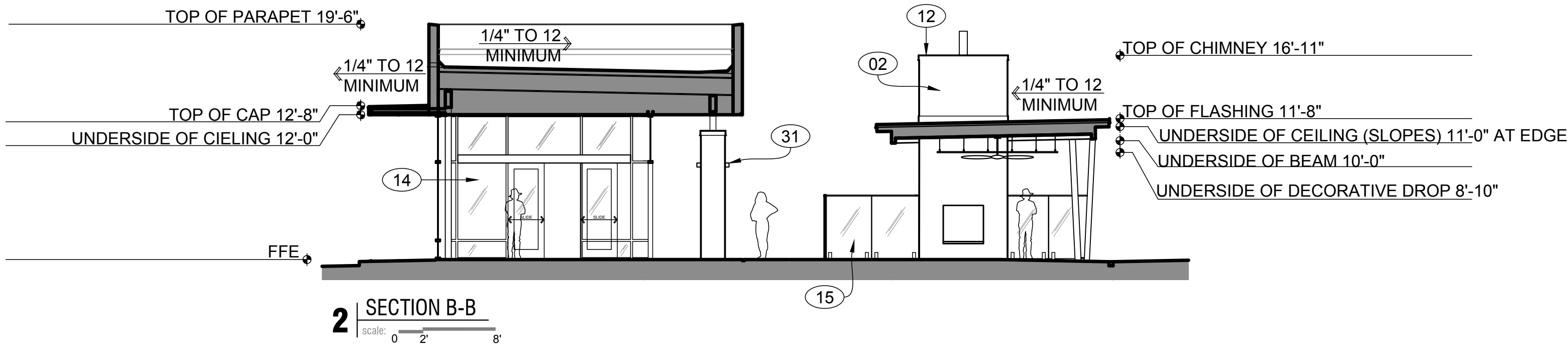
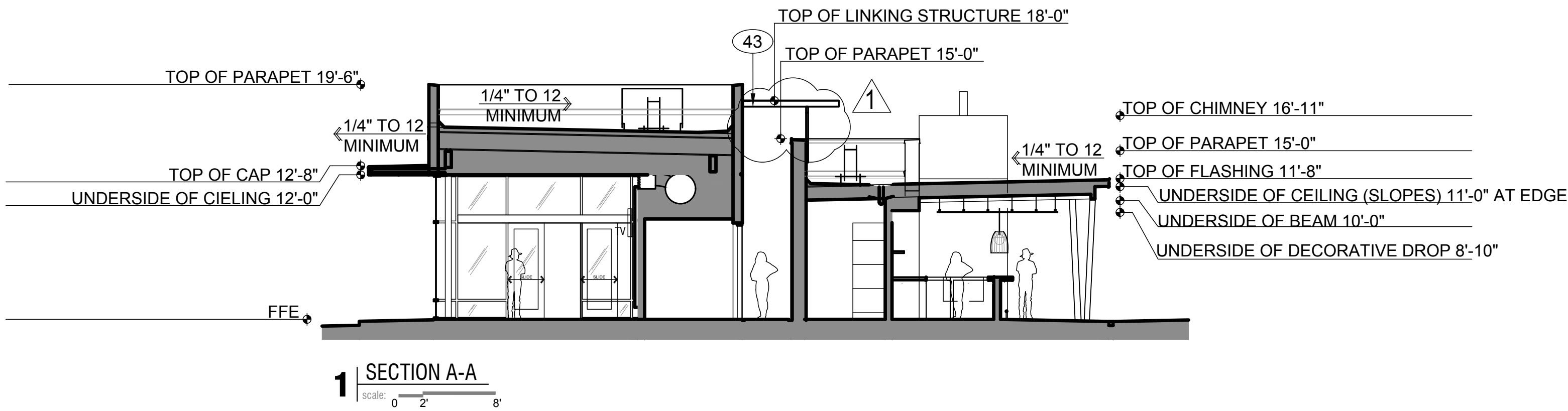
These documents establish the general standards of quality and detail for developing a negotiated construction contract. Be advised that all trades are responsible for reviewing and referring to the complete set of drawings. This is an integrated set and sheets should not be bid or build from individually.

building #2

a6.7

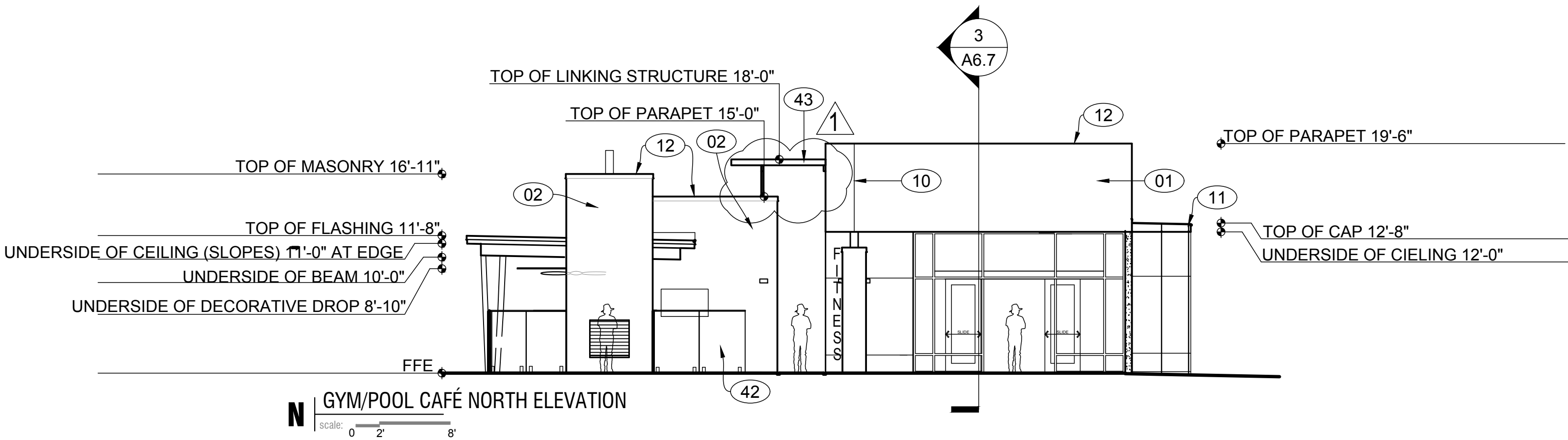
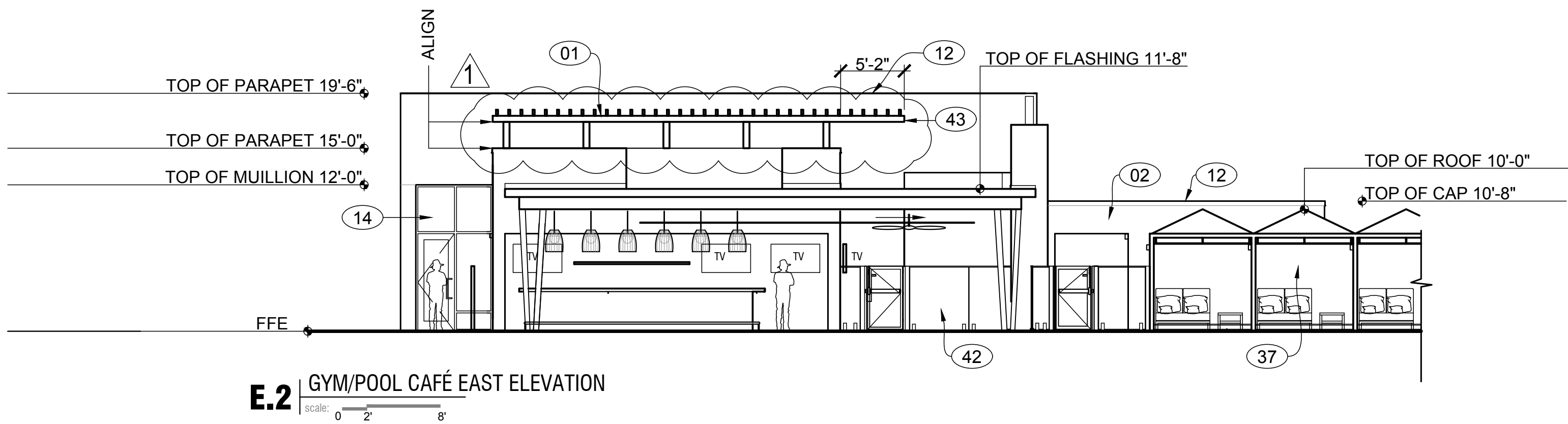
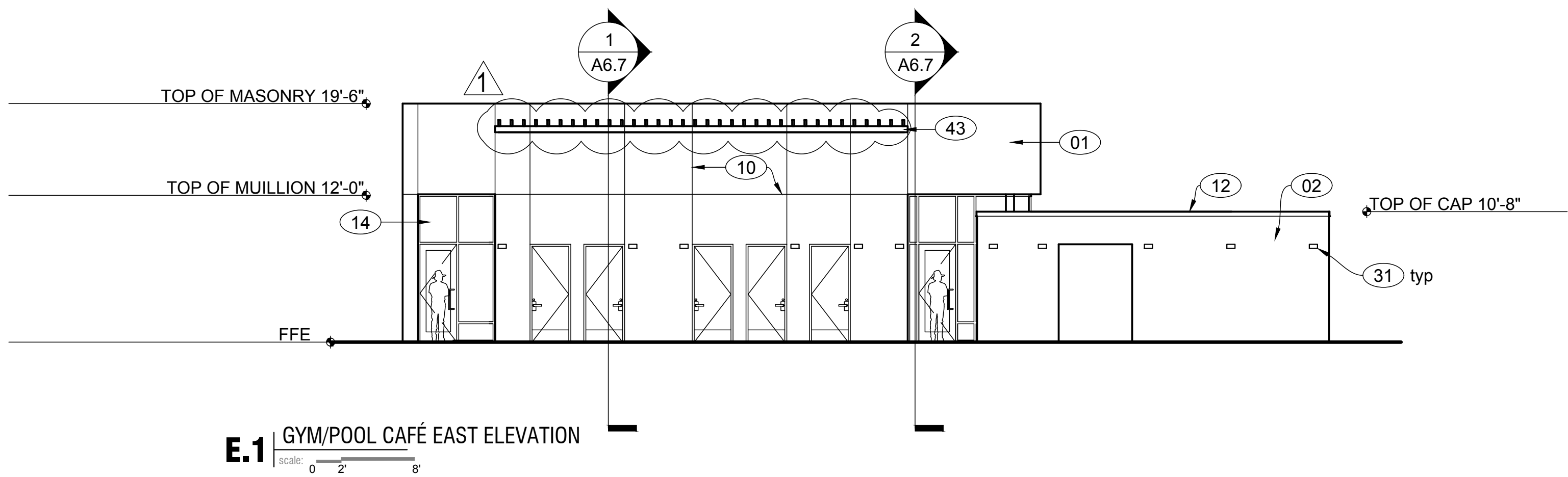
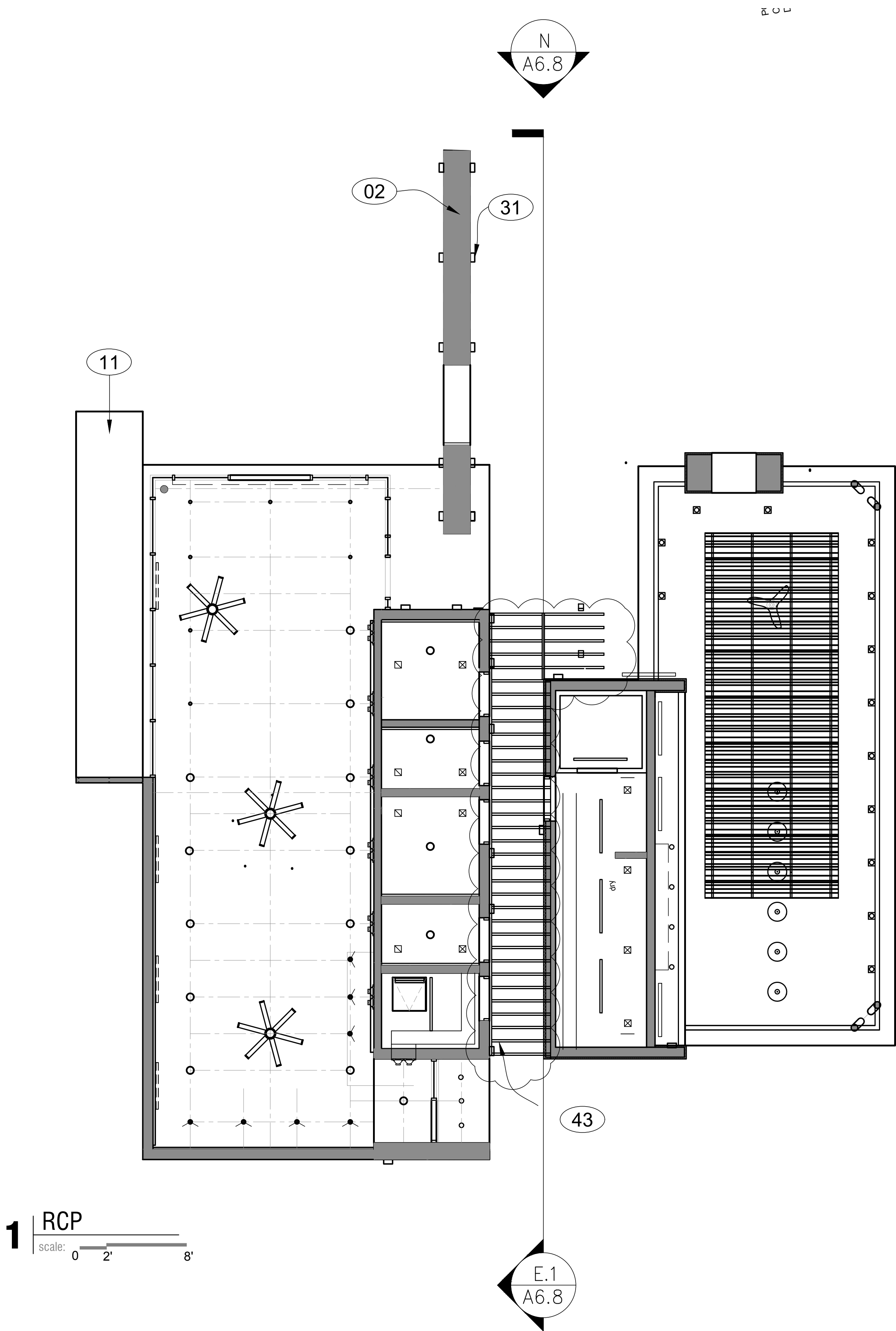
2/119

CDS plan check numbers:  
Pre-Application Number: 430-PA-2021  
219-PA-2021



REVISIONS MADE FOR  
CONNECTION BETWEEN  
GYM AND CAFE





- KEYNOTES: (SHEETS a6.1 - A6.8)
1. E.I.F.S system, see chapter 31, E.I.F.S item #6
  2. veneer system, see chapter 31, stone veneer item #5
  3. fire department connection
  4. "FDC" sign per city of Scottsdale standards
  5. fire alarm flow alarm
  6. drain down
  7. exterior recessed light dark sky compliant
  8. common centerline
  9. EIFS finished horizontal surface - typical at perimeter edge, see chapter 31, E.I.F.S. item #6
  10. control joint - typical at perimeter edge
  11. metal shade structure - east/west facing glass shade per energy code, see chapter 31, item #4
  12. pre-finished metal cap flashing, see chapter 31, item #4
  13. line of roof beyond
  14. pre finished glazing system, see chapter 31, items 1 & 2
  15. safety-rail hazard rail system
  16. patio wall - veneer system, see chapter 31, item #5
  17. line of wall beyond
  18. flashing - pre-finished system, see chapter 31, item #4
  19. stair tower beyond
  20. elevator override beyond
  21. screen beyond, see chapter 31, item #4
  22. existing Spanish clay tile to remain
  23. existing metal cap flashing with new painted finish
  24. existing stucco with new painted finish
  25. existing exterior door - repair defects + damage and refinish existing color
  26. existing window to remain
  27. new masonry patio wall - see detail 1 and 2/a6.8
  28. existing door frame to remain, new painted finish to match adjacent stucco wall semi-gloss finish on door frame
  29. new metal lattice for landscape climbing vine, painted finish
  30. new rail at disabled ramp
  31. new wall sconce, 100% cut-off dark-sky compliant, light color temp 2,800k 4" max projection from wall, recessed junction box
  32. new stucco screen wall
  33. xeriscaping see landscape dwgs
  34. existing fire department connection to remain
  35. new fire alarm equipment
  36. existing door and frame, refinish to match new color of adjacent wall
  37. wood - vertical (rain screen application)
  38. recessed down lights 100% cut-off, dark-sky compliant, light color temp 2,800k
  39. new wall sconce, 100% cut-off dark-sky compliant light color temp 2,800k, mount 8" below top of patio wall and 8" from edge (± 5'-6" above F.F.F.)
  40. wood paneling system over existing guard rail, see chapter 31 wood system 03
  41. emergency overflow scupper
  42. pool safety glass fence
  43. match custom aluminum fabrication finish to match aluminum window system, 2"x6" members.

1 REVISIONS MADE FOR CONNECTION BETWEEN GYM AND CAFÉ

**note**  
These documents establish the general standards of quality and detail for developing a negotiated construction contract. Be advised that all trades are responsible for reviewing and referring to the complete set of drawings. This is an integrated set and sheets should not be bid or build from individually.

building #2

2/119

CDS plan check numbers:  
Pre-Application Number: **430-PA-2021**  
**219-PA-2021**



**FORS**  
architecture + interiors  
2020 E Broadway Blvd.  
Tucson, AZ 85719  
520.795.9888

**the GEORGE Hotel**  
7330 North Pima Road, Scottsdale, AZ 85258

**a6.8**