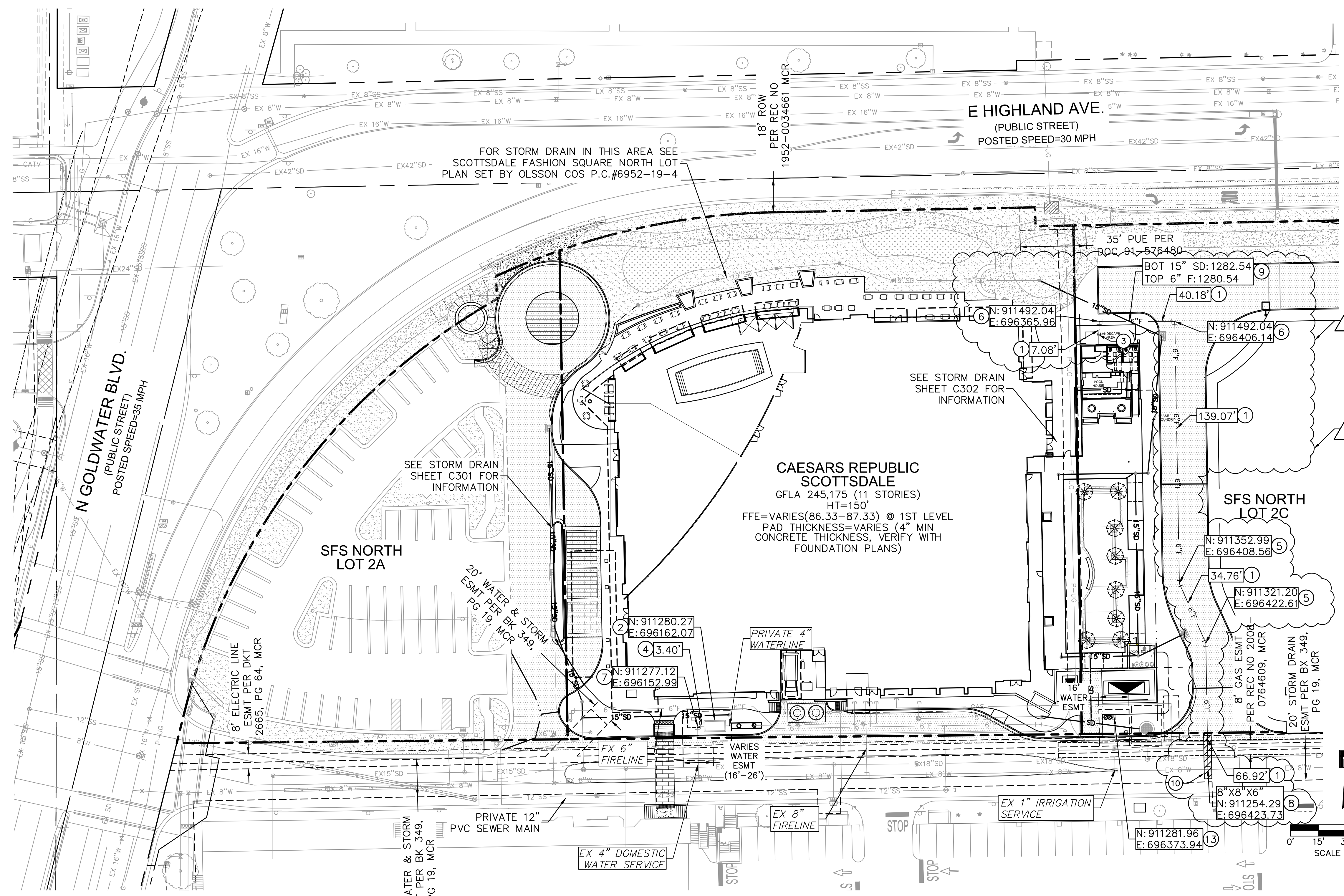


F:\2018\3001-3500\018-3159\40-Design\AutoCAD\Final Plans\Sheets\CONV\CAESARS\C501.PUB WTR_0183159 - Revised 2023.07.21.dwg USER: parmentis C:\BASE_0183159 - CAESARS C:\BASE_0183159 - REV 1 C:\BASE_0183159 - CAESARS_0183159



UTILITY PLAN KEYNOTES

- 1 INSTALL 6" DIP FIRE LINE
- 2 4" COMPOUND WATER METER PER COS STD DETAIL 2345, PROVIDE 11.5' L X 6' W STANDARD WATER METER VAULT PER MAG STD DETAIL 321.
- 3 TERMINATE AND CAP 6" DIP FDC LINE. SEE MECHANICAL PLANS FOR CONTINUATION INTO BUILDING
- 4 4" DOMESTIC WATER SERVICE SEE MECHANICAL PLANS FOR CONTINUATION
- 5 6"-22.5' BEND PER MAG STD DTL 302
- 6 6"-90° BEND PER MAG STD DTL 302
- 7 4" X 90° BEND PER MAG STD DTL 302
- 8 CONTRACTOR TO INSTALL TAPPING SLEEVE AND VALVE BOX PER MAG STD DTL 340 AND 391-1 TYPE C. SIZE PER PLAN
- 9 UTILITY CROSSING, MAINTAIN MINIMUM SEPERATION
- 10 SAWCUT REMOVE AND REPLACE EXISTING ASPHALT IN KIND PER C.O.S STANDARDS
- 11 NOT USED
- 12 NOT USED
- 13 1" IRRIGATION SERVICE LINE AND 1" WATER METER PER COS STD DETAIL 2330

PUBLIC FIRE LINE QUANTITIES		
ITEM	QUANTITY	UNIT
6" DIP FIRE LINE	288	LF
8"X8"X6" TAPPING SLEEVE AND VALVE BOX	1	EA
SAWCUT REMOVE AND REPLACE EXISTING ASPHALT	98	SF

- REVISION 1 INCLUDES AN ADDITIONAL 6 INCH FIRE LINE CONNECTION TO THE NORTH SIDE OF POOL HOUSE.
- REVISION 2 INCLUDES MOVING 6 INCH FIRE LINE WHICH WAS DUE TO MOVING POOL, POOL HOUSE AND ROADWAY.

NOTES FOR IMPROVEMENT PLANS WHERE THERE IS EXISTING ACP OR PVC PIPE:

ANY WATER LINE PROJECT THAT INVOLVES CONNECTING TO AN EXISTING ACP OR PVC PIPE, REQUIRES SPECIAL ATTENTION. PER DSPM SECTION 6-1.408:

FITTINGS INSTALLED INTO ASBESTOS CEMENT PIPE (ACP) OR PVC PIPE WITHIN 8- FEET OF ANOTHER FITTING OR JOINT WILL REQUIRE THAT SECTION OF PIPE TO BE REMOVED AND REPLACED WITH DUCTILE IRON PIPE (DIP). EXISTING TEES, TAPPING SLEEVES AND RELATED APPURTENANCES THAT ARE NOT UTILIZED BY THE DEVELOPMENT SHALL BE REMOVED BY THE CONTRACTOR. A MINIMUM 3-FOOT SECTION OF PIPE SHALL BE REMOVED, WITH NO LESS THAN 8- FEET REMAINING TO THE NEAREST JOINT. THE REMOVED PIPE SHALL BE REPLACED WITH DIP.

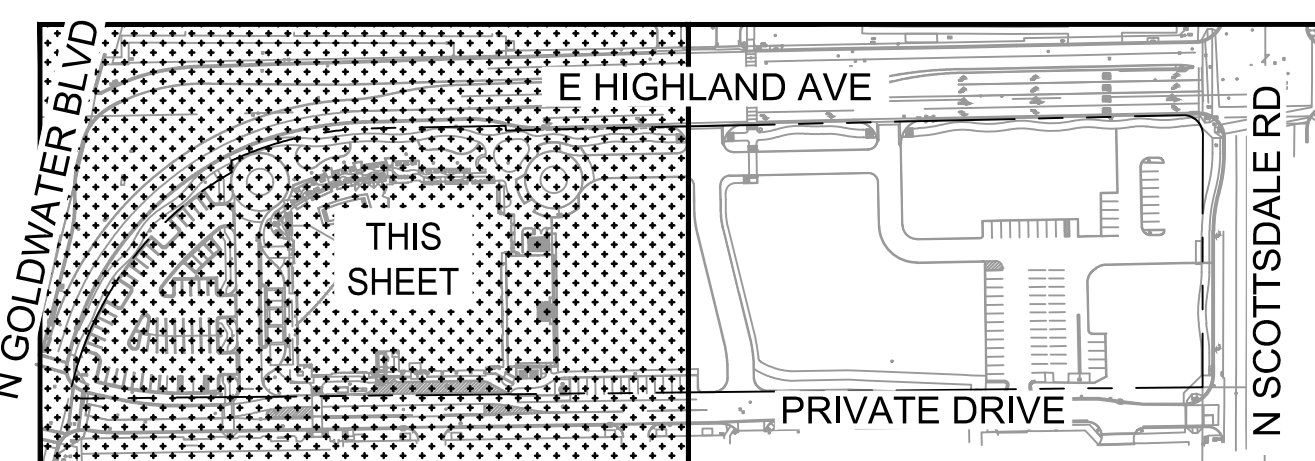
WHEN MORE THAN 3- FEET OF EXISTING ACP OR PVC WATER LINES ARE EXPOSED DURING CONSTRUCTION AND THE BEDDING IS DISTURBED, THE WATER LINE MUST BE REPLACED WITH DIP (MINIMUM CLASS 350) WITH MECHANICAL JOINTS OR FLANGED JOINTS TO 3- FEET PAST THE SIDES OF THE EXPOSED CROSSING TRENCH. REFER TO MAG STANDARD DETAIL NO. 403-3.

NO TAPPING SLEEVE AND VALVE SHALL BE USED ON ACP PIPE. VALVES WILL NEED TO BE CUT INTO ACP PIPE.

DISPOSAL OF MATERIALS CONTAINING ASBESTOS AND/OR LEAD SHALL BE IN CONFORMANCE WITH ALL REGULATIONS, LAWS AND ORDINANCES.

UTILITY NOTES:

1. CONTRACTOR TO VERIFY LOCATIONS AND INVERTS OF ALL EXISTING UTILITIES 72 HOURS PRIOR TO THE CONSTRUCTION AND NOTIFY ENGINEER OF DISCREPANCIES FROM PLANS.
2. PIPE BEDDING FOR ALL UTILITY LINES TO BE PER CITY OF SCOTTSDALE SPECIFICATIONS, AND CITY OF SCOTTSDALE STANDARD DETAIL 2201.



TEL 602.748.1000
FAX 602.748.1001

7878 North 16th Street, Suite 105
Phoenix, AZ 85020-5282

Call at least two full working days before you begin excavation.

Arizona Blue State, Inc.
Call 8-1-1 or 1-800-STAKE-IT (782-5244)
In Maricopa County: (602) 253-1100

REV.	DATE	REVISIONS DESCRIPTION

REVISIONS

IMPROVEMENT PLANS	2022
PUBLIC WATER PLAN	#6952-19-18
CAESARS REPUBLIC SCOTTSDALE	2022
SE CORNER OF GOLDWATER BLVD AND HIGHLAND AVE	#6952-19-18
SCOTTSDALE, AZ 85251	2022

C501 REV1
12-R1 of 25