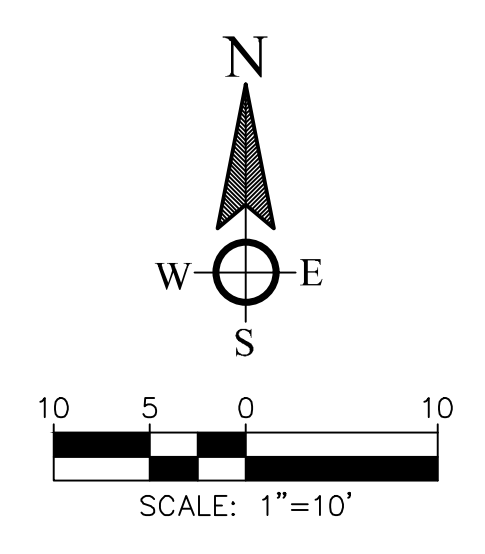
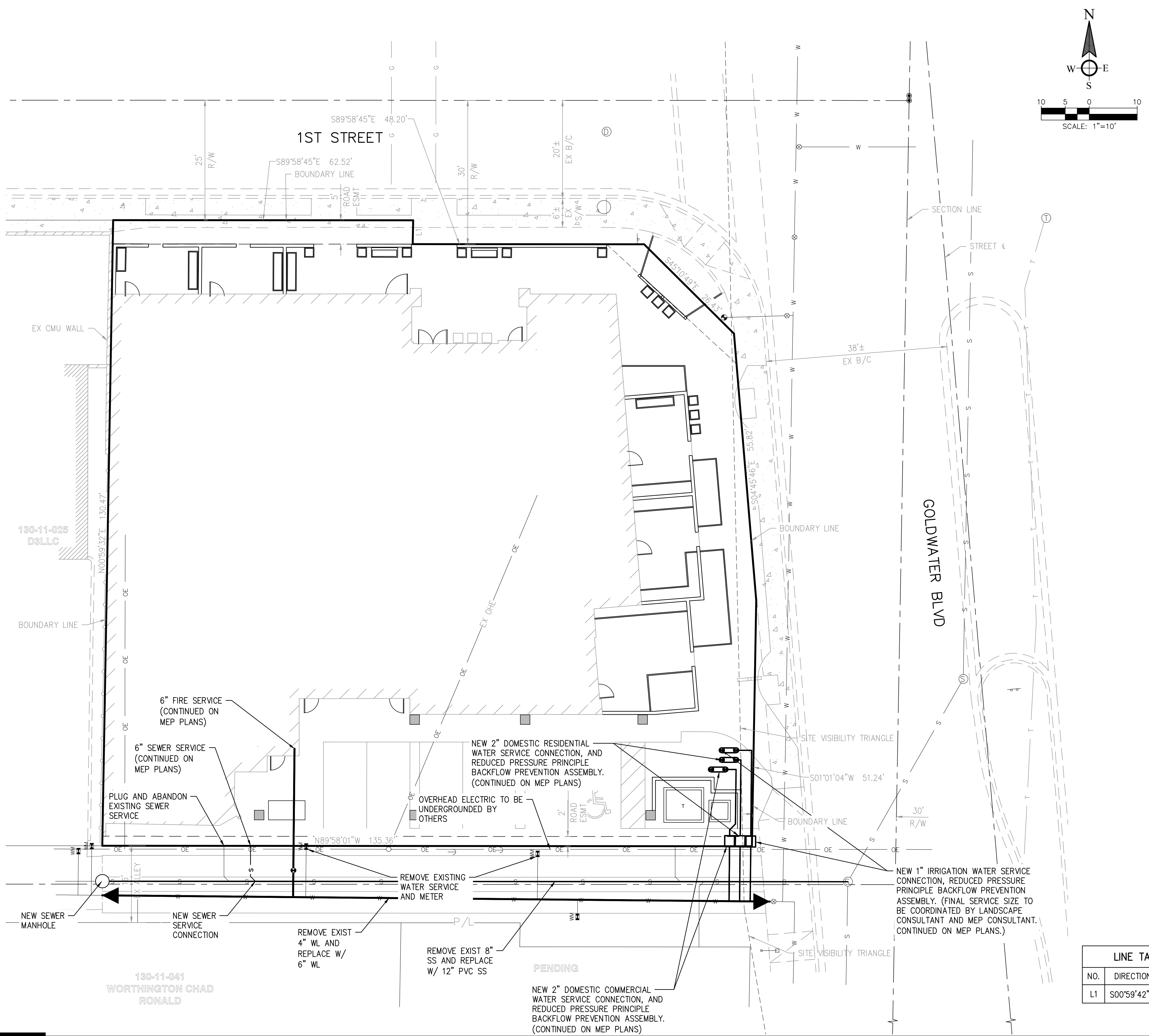


THIS DRAWING IS PROVIDED AS AN INSTRUMENT OF SERVICE BY DPA ARCHITECTS, INC. AND/OR ITS CONSULTANTS AND IS INTENDED FOR USE ON THIS PROJECT ONLY. THIS PROJECT ONLY. THIS DRAWING REMAINS THE PROPERTY OF DPA ARCHITECTS, INC. AND SHALL BE RETURNED TO THE ARCHITECTURAL WORKS COPYRIGHT ACT OF 1990. ALL DRAWINGS, SPECIFICATIONS, NOTES AND RELATED INFORMATION INCLUDING THE ORIGINAL FORM, AMENDMENTS AND CORRECTIONS ARE THE PROPERTY OF DPA ARCHITECTS, INC. AND SHALL BE RETURNED TO THE ARCHITECTURAL WORKS COPYRIGHT ACT OF 1990. ALL DRAWINGS, SPECIFICATIONS, NOTES AND RELATED INFORMATION INCLUDING THE ORIGINAL FORM, AMENDMENTS AND CORRECTIONS ARE THE PROPERTY OF DPA ARCHITECTS, INC. AND SHALL BE RETURNED TO THE ARCHITECTURAL WORKS COPYRIGHT ACT OF 1990.



- LEGEND**
- TRANS TRANSFORMER
 - CMU CONCRETE MASONRY UNIT
 - R/W RIGHT-OF-WAY
 - OHE/OE OVERHEAD ELECTRIC
 - CL CENTERLINE
 - EX EXISTING
 - ESMT EASEMENT
 - S SEWER
 - W WATER

LINE TABLE		
NO.	DIRECTION	LENGTH
L1	S00°59'42"W	5.00'

130-11-041
WORTHINGTON CHAD
RONALD

PENDING
NEW 2" DOMESTIC COMMERCIAL
WATER SERVICE CONNECTION, AND
REDUCED PRESSURE PRINCIPLE
BACKFLOW PREVENTION ASSEMBLY.
(CONTINUED ON MEP PLANS)

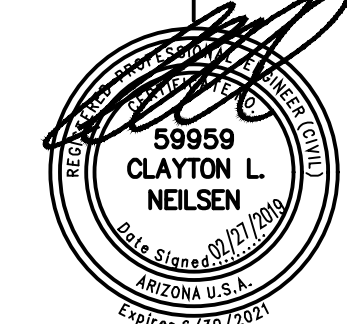
NEW 1" IRRIGATION WATER SERVICE
CONNECTION, REDUCED PRESSURE
PRINCIPLE BACKFLOW PREVENTION
ASSEMBLY. (FINAL SERVICE SIZE TO
BE COORDINATED BY LANDSCAPE
CONSULTANT AND MEP CONSULTANT.
CONTINUED ON MEP PLANS.)

PRELIMINARY UTILITY PLAN



CV102

WINERY RESIDENCES OF SCOTTSDALE
6961 E 1ST ST. SCOTTSDALE, AZ. 85251



dpa
DESIGNERS OF
PROGRESSIVE
ARCHITECTURE
7272 e indian school rd ste 214
scottsdale, arizona 85251
telephone 480.941.4828
www.dpaarchitects.com

REVISION INFORMATION

#:	Description:	Date:

drawn by: DAB/NAM
project no.: 1054.02
date: 2/27/2019