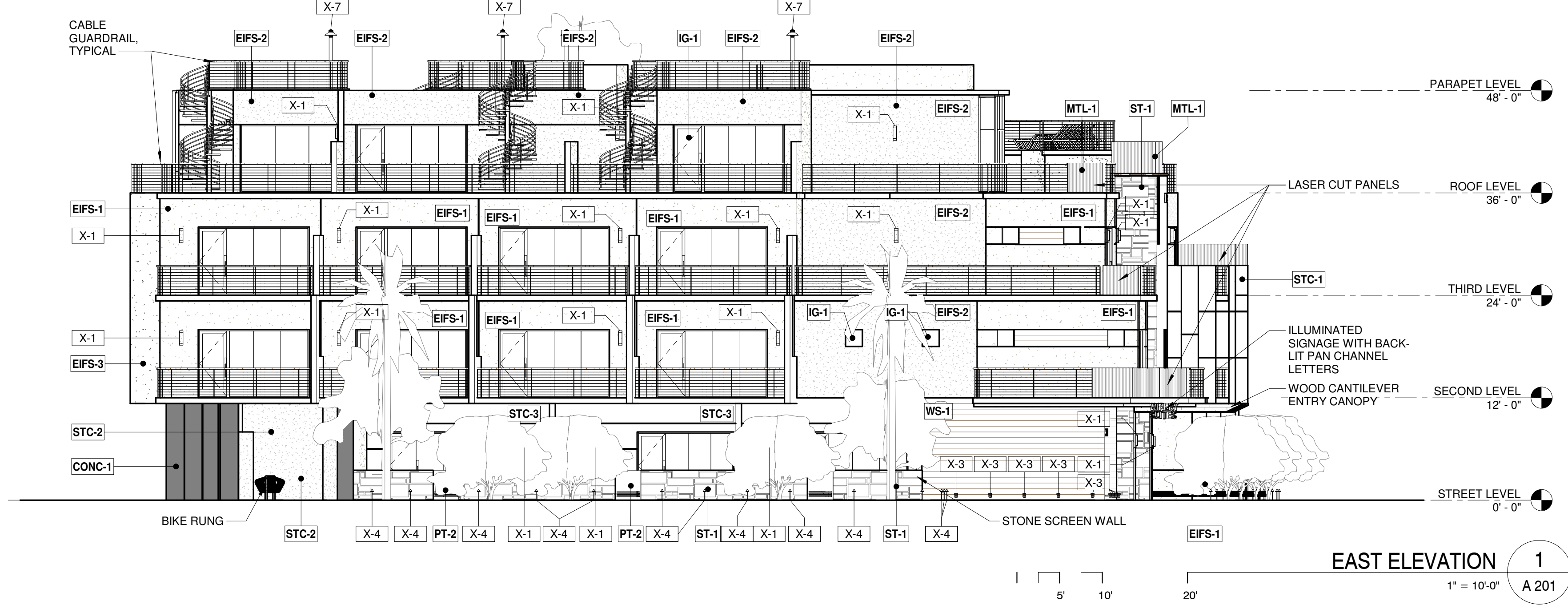


EXTERIOR MATERIOR AND FINISH SCHEDULE

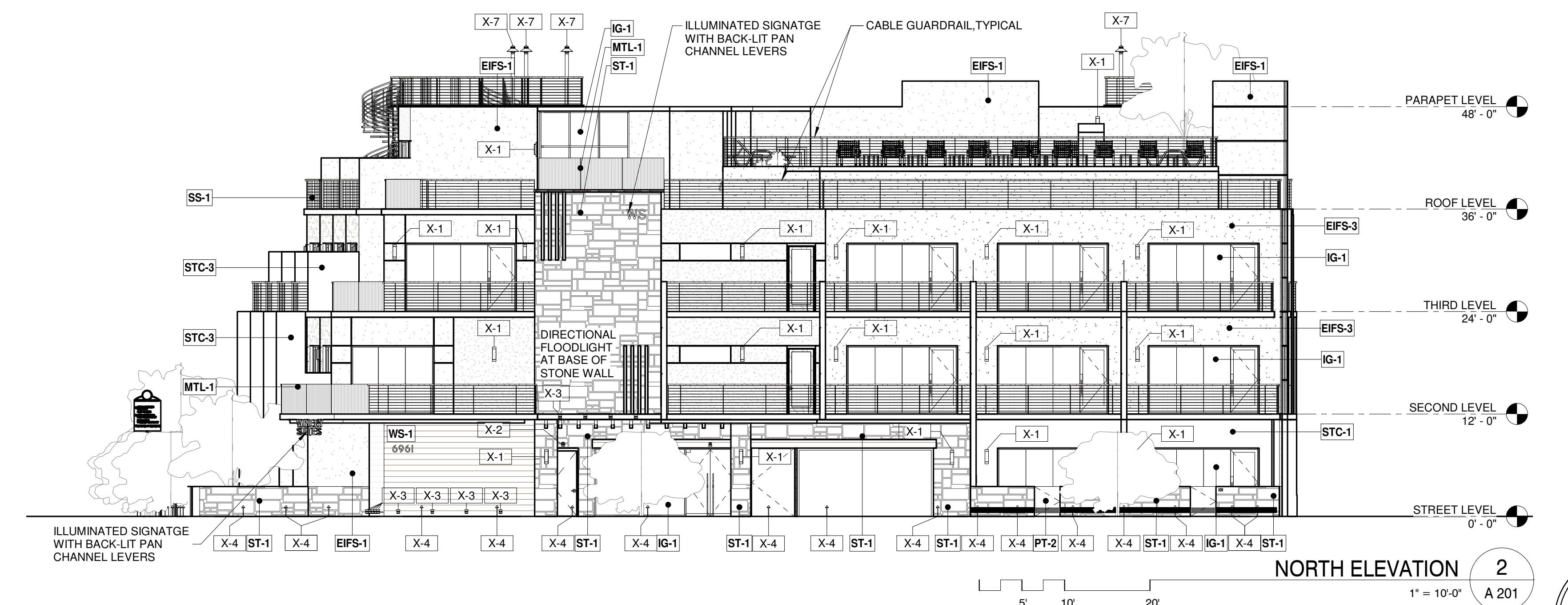
EIFS-1	DESCRIPTION: EIFS LOCATION: EXTERIOR WALLS MANUFACTURER: DUNN EDWARDS COLOR: 'ASH GRAY' DEC 751 FINISH: SAND FINISH	WS-1	DESCRIPTION: SIMULATED WOOD STONE PLANK VENEER LOCATION: EXTERIOR WALL AT STREET LEVEL MANUFACTURER: CORONADO STONE COLOR: ROUGH CUT WOODSTONE CEDAR FINISH: MATTE
EIFS-2	DESCRIPTION: EIFS LOCATION: EXTERIOR WALLS MANUFACTURER: DUNN EDWARDS COLOR: 'BISON BEIGE' DEC 750 FINISH: SAND FINISH	ST-1	DESCRIPTION: SIMULATED WOOD STONE VENEER LOCATION: AT ENTRY TOWER ELEMENT CORONADO STONE MIX OF THE FOLLING STONE VENEERS: 60% ITALIAN VILLA' PROVO CANYON GREY 40% ITALIAN VILLA' TIMBERLAKE/GREY STONE
EIFS-3	DESCRIPTION: EIFS LOCATION: EXTERIOR WALLS MANUFACTURER: DUNN EDWARDS COLOR: 'CRAFT PAPER' SW6125 FINISH: SAND FINISH	PT-1	DESCRIPTION: ACCENT PAINT COLOR LOCATION: WINDOW BOX FRAMES, METAL DOORS AND TRIM MANUFACTURER: SHERWIN WILLIAMS COLOR: 'POINTED ROCK' DE6363
STC-1	DESCRIPTION: STUCCO/PORTLAND CEMENT PLASTER LOCATION: EXTERIOR WALLS MANUFACTURER: DUNN EDWARDS COLOR: 'ASH GRAY' DEC 751 FINISH: SAND FINISH	PT-2	DESCRIPTION: ACCENT PAINT COLOR LOCATION: ENTRY METAL GATE MANUFACTURER: SHERWIN WILLIAMS COLOR: 'POINTED ROCK' DE6363
STC-2	DESCRIPTION: STUCCO/PORTLAND CEMENT PLASTER LOCATION: EXTERIOR WALLS MANUFACTURER: DUNN EDWARDS COLOR: 'BISON BEIGE' DEC 750 FINISH: SAND FINISH	CONC-1	DESCRIPTION: NATURAL FINISH CONCRETE COLUMN LOCATION: CONCRETE COLUMN MANUFACTURER: N/A COLOR: STANDARD CONCRETE
STC-3	DESCRIPTION: STUCCO/PORTLAND CEMENT PLASTER LOCATION: EXTERIOR WALLS MANUFACTURER: DUNN EDWARDS COLOR: 'CRAFT PAPER' SW6125 FINISH: SAND FINISH	SS-1	DESCRIPTION: STAINLESS STEEL CABLE LOCATION: RAILINGS MANUFACTURER: CUSTOM PER LAYOUT COLOR: STAINLESS
MTL-1	DESCRIPTION: LASER CUT METAL PANELS LOCATION: EXTERIOR WALL, RAILING ELEMENT MANUFACTURER: CUSTOM PER LAYOUT COLOR: BRONZE ANODIZED	IG-1	DESCRIPTION: LOW - E INSULATED GLAZING UNITS/FRAMES LOCATION: DWELLINGS UNITS & WINERY MARKET WINDOW OPENINGS MANUFACTURER: VITRO/PPG TYPE: SOLARGREY, SOLARBAN 70XL 7% REFLECTIVITY MEDIUM BRONZE ANODIZED
WD-1	DESCRIPTION: SYNTHETIC WOOD PURLINS LOCATION: AT BUILDING ENTRY MANUFACTURER: TREX ENHANCE COLOR: 'BEACH DUNE'		

EXTERIOR LIGHTING SCHEDULE

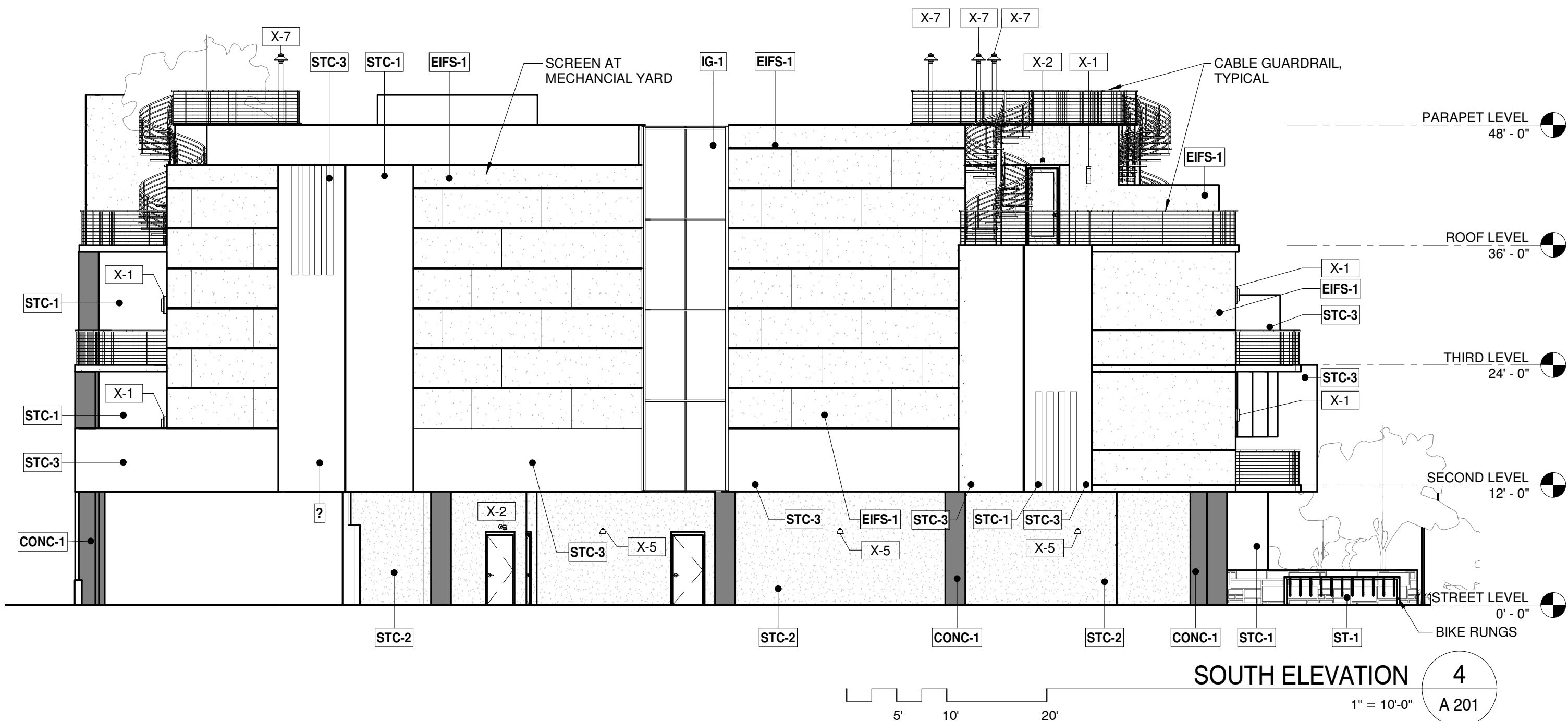
TYPE MARK	MODEL	MANUFACTURER	LAMP TEMP	LAMP	DESCRIPTION
X-1	C-AR-FS-20-LED-391-BP-WHT-120	TEKA LIGHTING	3000 K	10W LED	ARCADE SERIES 20" EXTERIOR WALL SCONCE, WALL MOUNTED AT 7" TO CENTER OF FIXTURE, AT PATIO AND ENTRY
X-2	C-SWM-LED-L11-BP-S-CRW	TEKA LIGHTING	3000 K	10W LED	EXTERIOR WALL MOUNTED DOWNLIGHT SINGLE HEAD FULLY ADJUSTABLE DIRECTIONAL FLOODLIGHT, MOUNTED 8" TO CENTER OF FIXTURE
X-3	C-PNF-6"-LED-E65-MFL-A9-BP-12-11-C-POWER CANOPY	TEKA LIGHTING	3000 K	8W LED	SINGLE HEAD FULLY ADJUSTABLE DIRECTIONAL FLOODLIGHT WITH PAR30 LED RETROFIT LAMP, UP LIGHT AT PLANK WALL AND STONE TOWER
X-4	C-HLP-12"-C-LED-E7-1-BP	TEKA LIGHTING	3000 K	3W LED	12" STEM HEIGHT BOLLARD LIGHTING FIXTURE AT LANDSCAPE AND PATHWAY
X-5	ITEKA LED	ICUZZINI	3000 K	20W LED	FLOODLIGHT INTENDED FOR USE WITH LED LIGHT SOURCES, WALL MOUNTED AT 7" TO CENTER OF FIXTURE, AT PARKING AND MECH ROOM
X-6	DM-LED-E10-AQW	LITON	3000 K	3W LED	EXTERIOR RECESSED LED PUCK LIGHT, PINHOLE TRIM, NEW CONSTRUCTION HOUSING, 3000K, WHITE PINHOLE, BLACK REFLECTOR.
X-7	BPM-SD12-LED-X84-BP-S-PT-D23-MT	TEKA LIGHTING	3000 K	23W LED	6' HEIGHT POLE MOUNT SOLID STATE LIGHTING FIXTURE AT VIEWING DECK



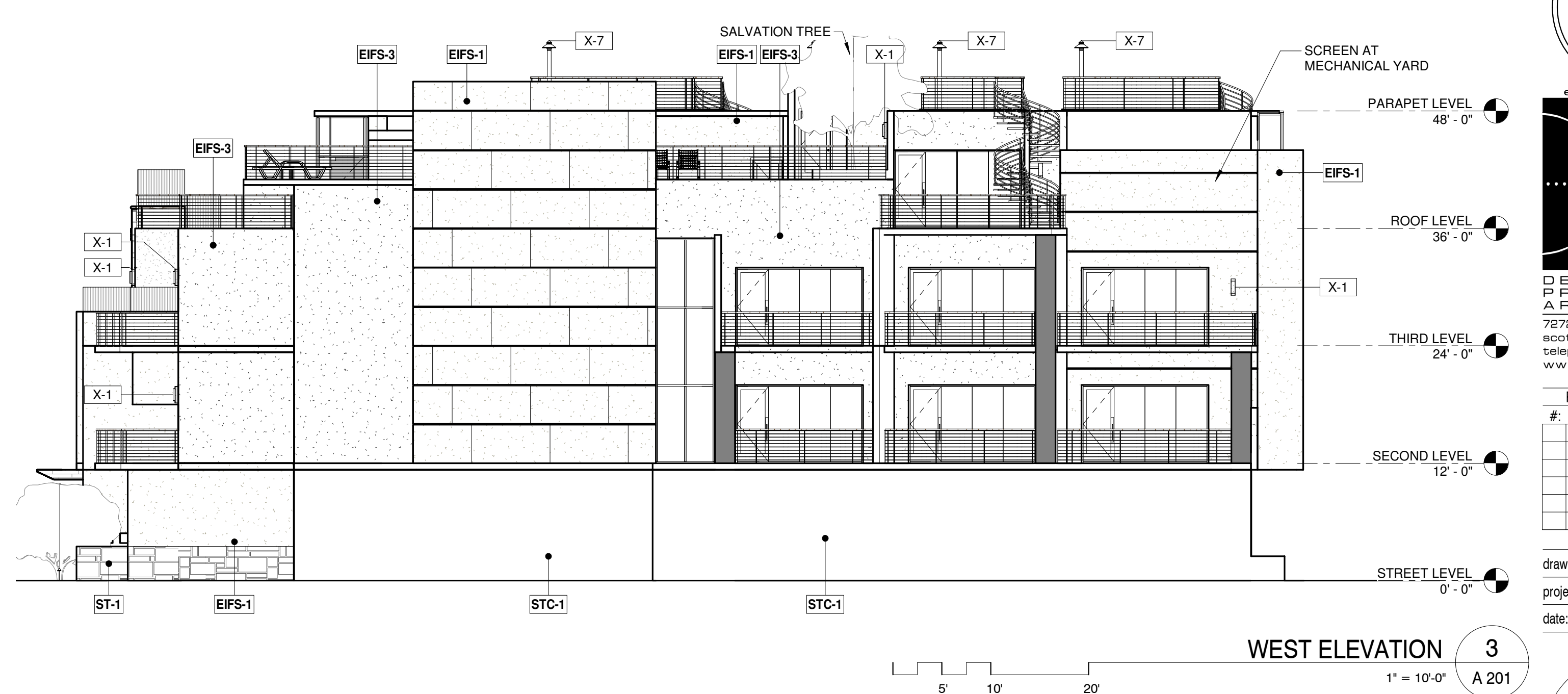
EAST ELEVATION 1
1" = 10'-0" A 201



NORTH ELEVATION 2
1" = 10'-0" A 201



SOUTH ELEVATION 4
1" = 10'-0" A 201



WEST ELEVATION 3
1" = 10'-0" A 201

BUILDING ELEVATIONS-BW

CITY OF SCOTTSDALE
REZONING/DR DEVELOPMENT SUBMITTAL
PRE-APP CASE #486 - PA - 2018

WINERY SUITES OF SCOTTSDALE
6951 / 6961 E 1ST ST. SCOTTSDALE, AZ. 85251



expires 30 June 2019

dpa
DESIGNERS OF
PROGRESSIVE
ARCHITECTURE
7272 e indian school rd ste 214
scottsdale, arizona 85251
telephone 480 941 4222
www.dpaarchitects.com

REVISION INFORMATION

#	Description	Date

drawn by: YT
project no.: 18024
date: 11/13/18

