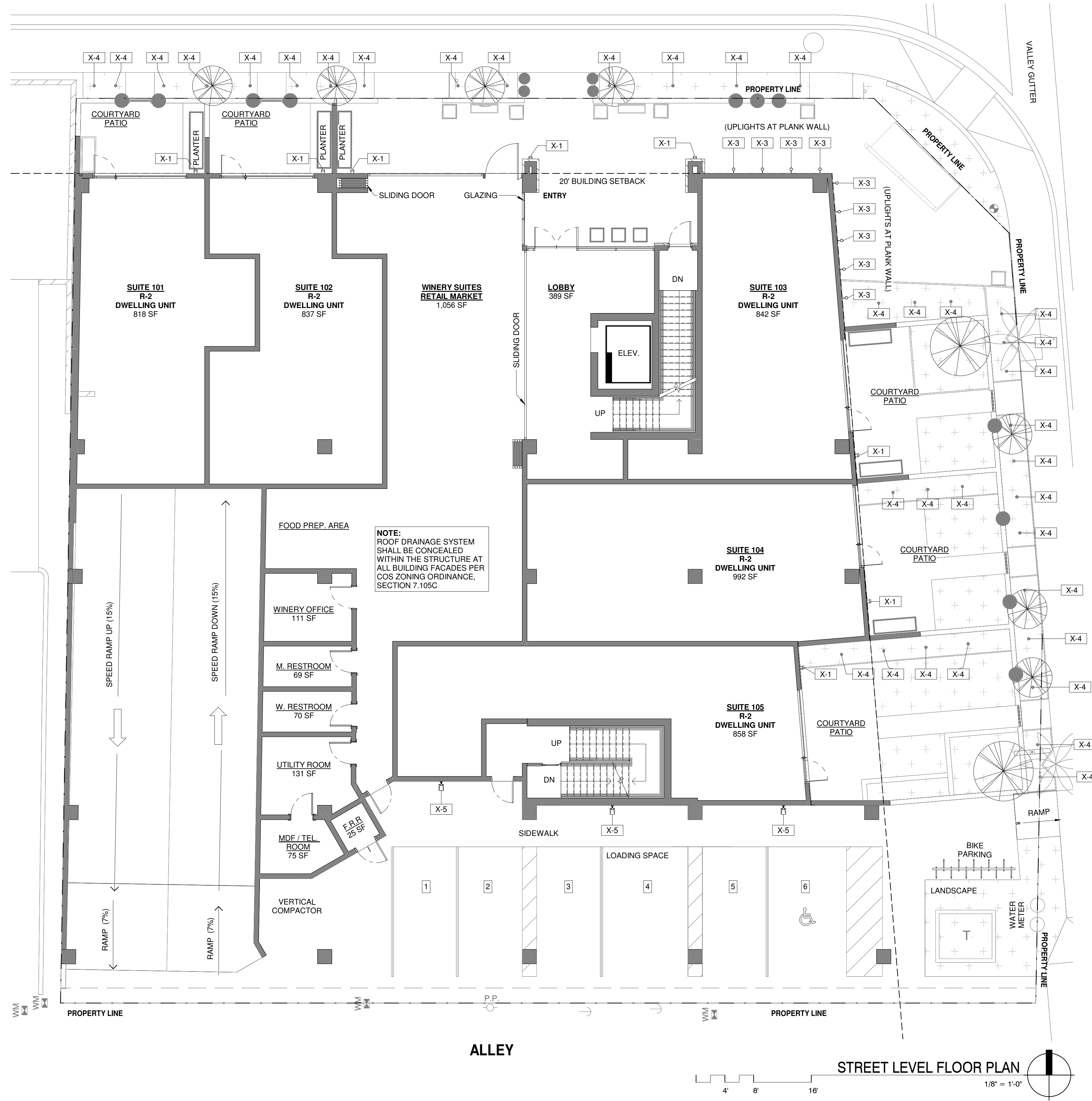


1ST STREET

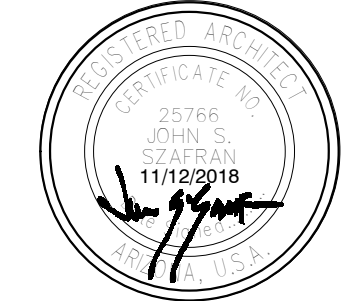


TYPE MARK	MODEL	MANUFACTURER	LAMP TEMP	LAMP	DESCRIPTION
X-1	C-AR-FS-20-LED-391-BP-WHT-120	TEKA LIGHTING	3000 K	10W LED	ARCADE SERIES 20" EXTERIOR WALL SCONCE, WALL MOUNTED AT 7' TO CENTER OF FIXTURE, AT PATIO AND ENTRY
X-2	C-SWM-LED-L11-BP-S-CRW	TEKA LIGHTING	3000 K	10W LED	EXTERIOR WALL MOUNTED DOWNLIGHT SINGLE HEAD FULLY ADJUSTABLE DIRECTIONAL FLOODLIGHT, MOUNTED 8" TO CENTER OF FIXTURE
X-3	C-PNF-6"-LED-E65-MFL-A9-BP-12-11-C-POWER CANOPY	TEKA LIGHTING	3000 K	8W LED	SINGLE HEAD FULLY ADJUSTABLE DIRECTIONAL FLOODLIGHT WITH PAR30 LED RETROFIT LAMP, UP LIGHT AT PLANK WALL AND STONE TOWER
X-4	C-HLP-12"-C-LED-E7-1-BP	TEKA LIGHTING	3000 K	3W LED	12" STEM HEIGHT BOLLARD LIGHTING FIXTURE AT LANDSCAPE AND PATHWAY
X-5	ITEKA LED	iCUZZINI	3000 K	20W LED	FLOODLIGHT INTENDED FOR USE WITH LED LIGHT SOURCES, WALL MOUNTED AT 7'6" TO CENTER OF FIXTURE, AT PARKING AND MECH ROOM
X-6	DM-LED-E10-AQW	LITON	3000 K	3W LED	EXTERIOR RECESSED LED PUCK LIGHT, PINHOLE TRIM, NEW CONSTRUCTION HOUSING, 3000K, WHITE PINHOLE, BLACK REFLECTOR.
X-7	BPM-SD12-LED-X84-BP-S-PT-D23-MT	TEKA LIGHTING	3000 K	23W LED	6' HEIGHT POLE MOUNT SOLID STATE LIGHTING FIXTURE AT VIEWING DECK

NOTE:
ROOF DRAINAGE SYSTEM SHALL BE CONCEALED WITHIN THE STRUCTURE AT ALL BUILDING FACADES PER COS ZONING ORDINANCE, SECTION 7.105C

THIS DRAWING IS PROPERTY OF DPA ARCHITECTS, INC. AND IS INTENDED FOR USE ONLY ON THE PROJECT IDENTIFIED HEREIN. ANY REUSE OF THIS DRAWING FOR ANY OTHER PROJECT WITHOUT THE WRITTEN CONSENT OF DPA ARCHITECTS, INC. IS STRICTLY PROHIBITED. © 2018 DPA ARCHITECTS, INC.

WINERY SUITES OF SCOTTSDALE
6951 / 6961 E 1ST ST. SCOTTSDALE, AZ. 85251



DESIGNERS OF PROGRESSIVE ARCHITECTURE
7272 e indian school rd ste 214
scottsdale, arizona 85251
telephone 480 941 4222
www.dpaarchitects.com

REVISION INFORMATION

#	Description	Date

drawn by: Author
project no.: 18024
date: 11/13/18

EXTERIOR LIGHTING SITE PLAN
CITY OF SCOTTSDALE
REZONING/DR DEVELOPMENT SUBMITTAL
PRE-APP CASE #486 - PA - 2018

