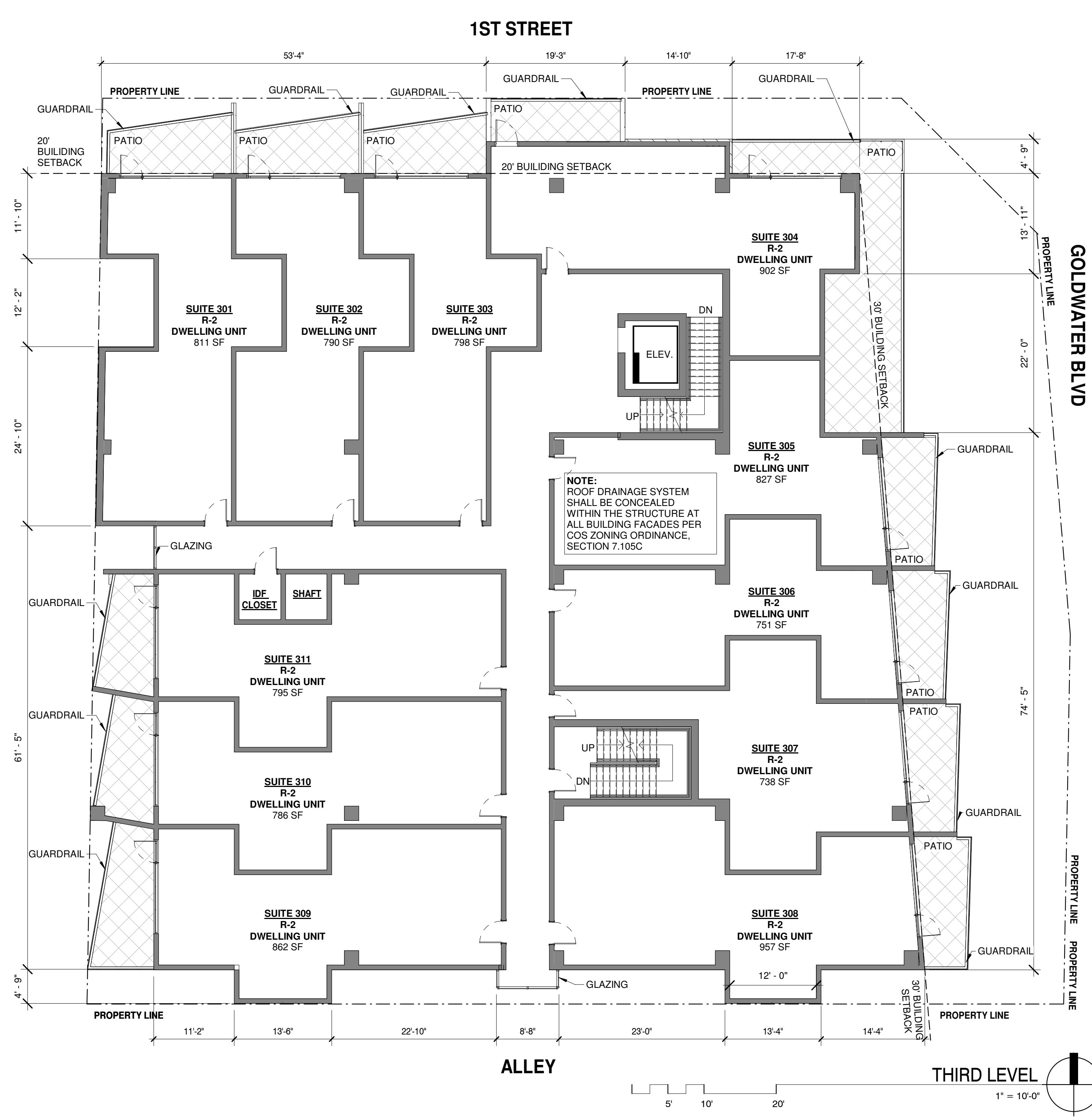
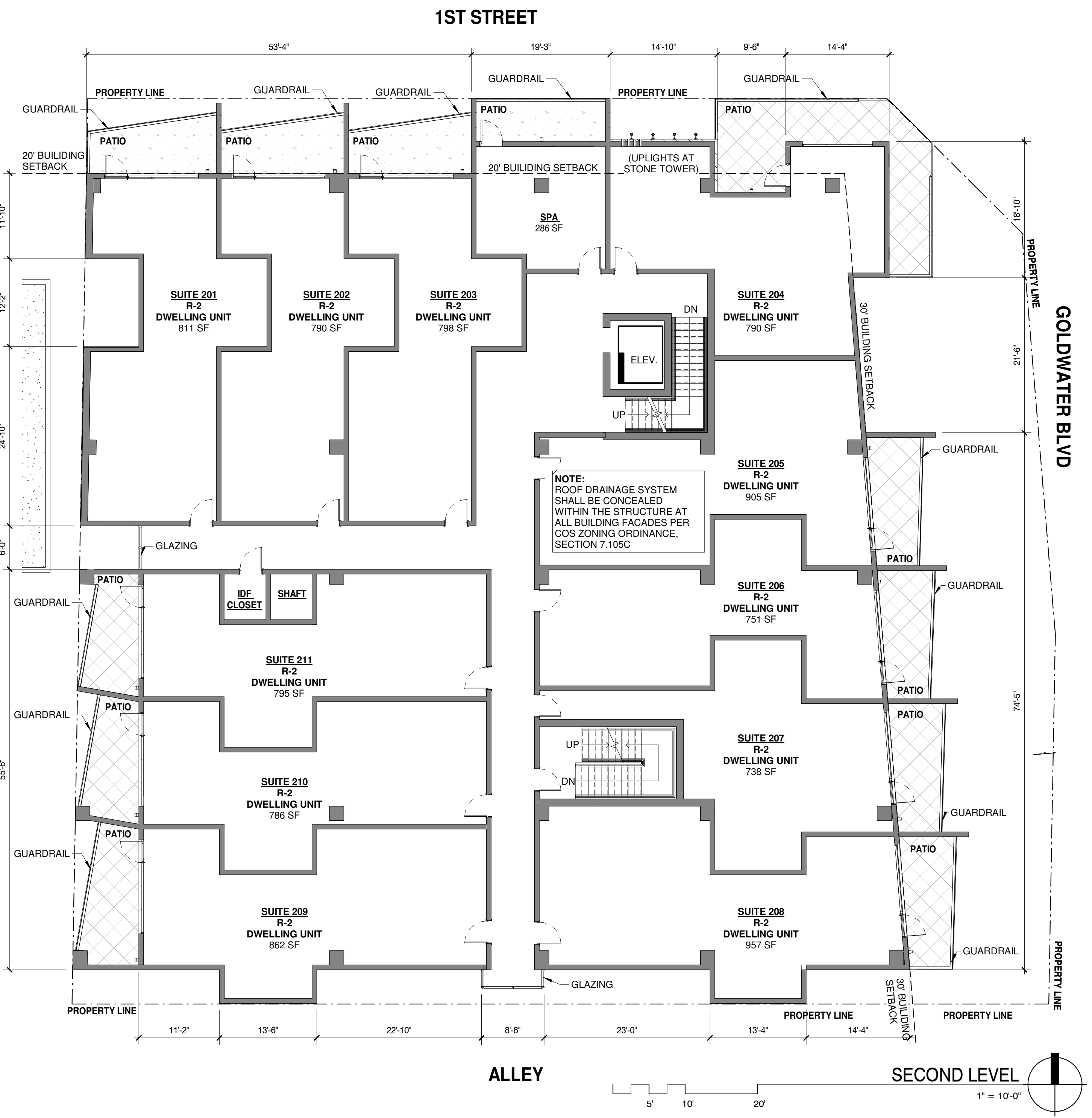


THIS DRAWING IS PROVIDED AS AN INSTRUMENT OF SERVICE BY DPA ARCHITECTS, INC. AND IS NOT TO BE REPRODUCED OR TRANSMITTED IN ANY FORM OR BY ANY MEANS, ELECTRONIC OR MECHANICAL, INCLUDING PHOTOCOPYING, RECORDING, OR BY ANY INFORMATION STORAGE AND RETRIEVAL SYSTEM, WITHOUT THE WRITTEN PERMISSION OF DPA ARCHITECTS, INC. ALL DIMENSIONS SPECIFIED ARE TO BE CONSIDERED AS APPROXIMATE UNLESS OTHERWISE NOTED. ANY REVISIONS TO THIS DRAWING SHALL BE INDICATED BY A REVISION TABLE AND SHALL BE RETURNED TO THE ARCHITECTURAL WORKS DIVISION OF THE CITY OF SCOTTSDALE, ARIZONA, FOR APPROVAL.



FLOOR PLANS - 2ND LEVEL / 3RD LEVEL

CITY OF SCOTTSDALE
 REZONING/DR DEVELOPMENT SUBMITTAL
 PRE-APP CASE #486 - PA - 2018

WINERY SUITES OF SCOTTSDALE
 6951 / 6961 E 1ST ST. SCOTTSDALE, AZ. 85251



dpa
 DESIGNERS OF
 PROGRAMS
 ARCHITECTURE
 7272 e indian school rd ste 214
 scottsdale, arizona 85251
 telephone 480 941 4222
 www.dpaarchitects.com

REVISION INFORMATION

#	Description	Date

drawn by: YT
 project no.: 18024
 date: 11/13/18

