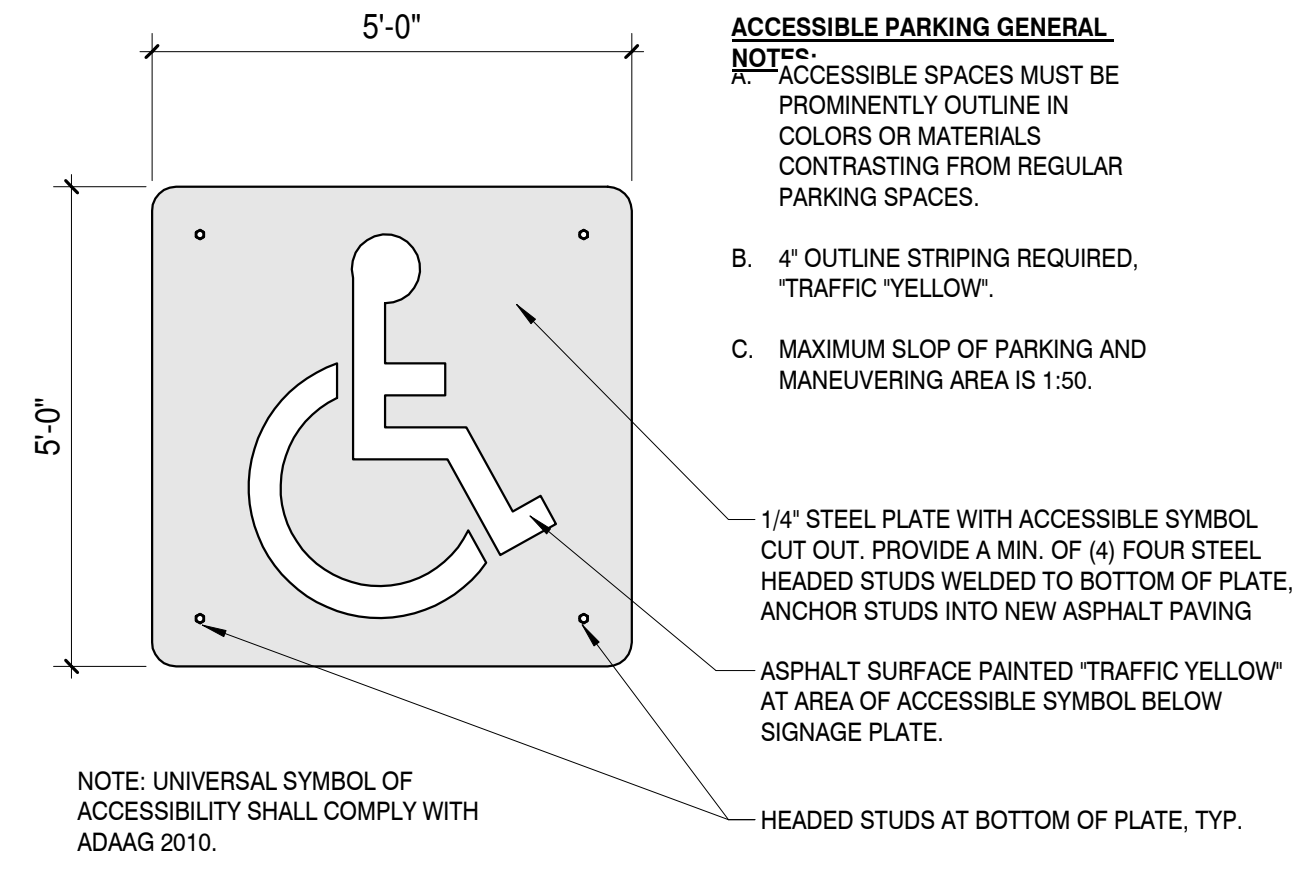
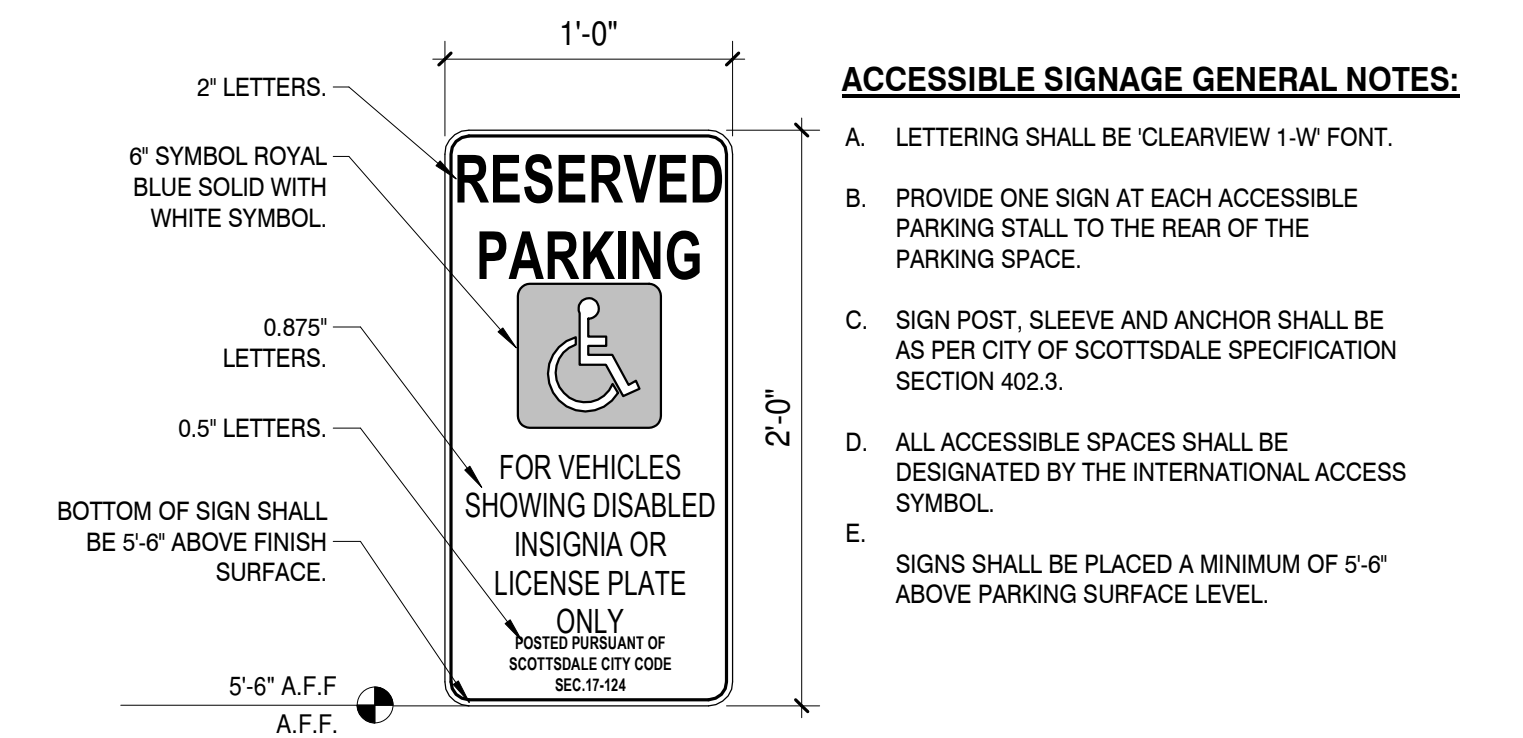


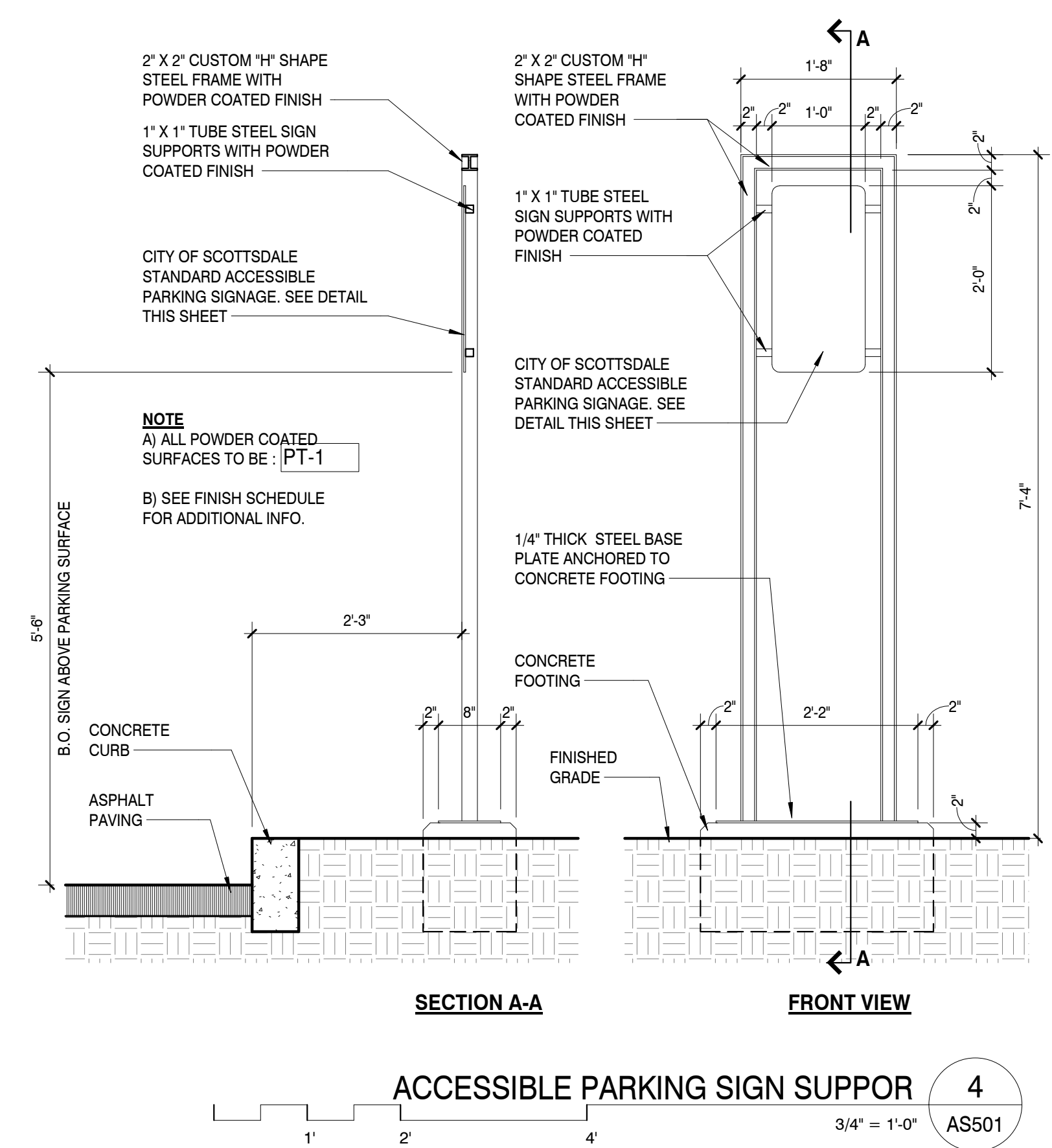
THIS DRAWING IS HEREBY AS AN INSTRUMENT OF SERVICE TO THE CITY OF SCOTTSDALE, ARIZONA. IT IS THE PROPERTY OF DPA ARCHITECTS, INC. AND SHALL BE RETURNED TO THEM UPON COMPLETION OF THE CONSTRUCTION WORK. PURSUANT TO THE ARCHITECTURAL WORKS COPYRIGHT ACT OF 1976, ALL DRAWINGS, SPECIFICATIONS, NOTES AND EXHIBITS, INCLUDING THE ORIGINAL, REVISIONS AND COPIES, ARE THE PROPERTY OF DPA ARCHITECTS, INC. AND SHALL BE RETURNED TO THEM UPON COMPLETION OF THE CONSTRUCTION WORK. WITHOUT PRIOR WRITTEN CONSENT FROM DPA ARCHITECTS, INC. IT IS STRICTLY PROHIBITED TO REPRODUCE, COPY, DISTRIBUTE, OR TRANSMIT IN ANY MANNER OR BY ANY MEANS, ELECTRONIC OR MECHANICAL, INCLUDING PHOTOCOPYING, RECORDING, OR BY ANY INFORMATION STORAGE AND RETRIEVAL SYSTEM, WITHOUT PERMISSION IN WRITING FROM DPA ARCHITECTS, INC. © 2018 DPA ARCHITECTS, INC.



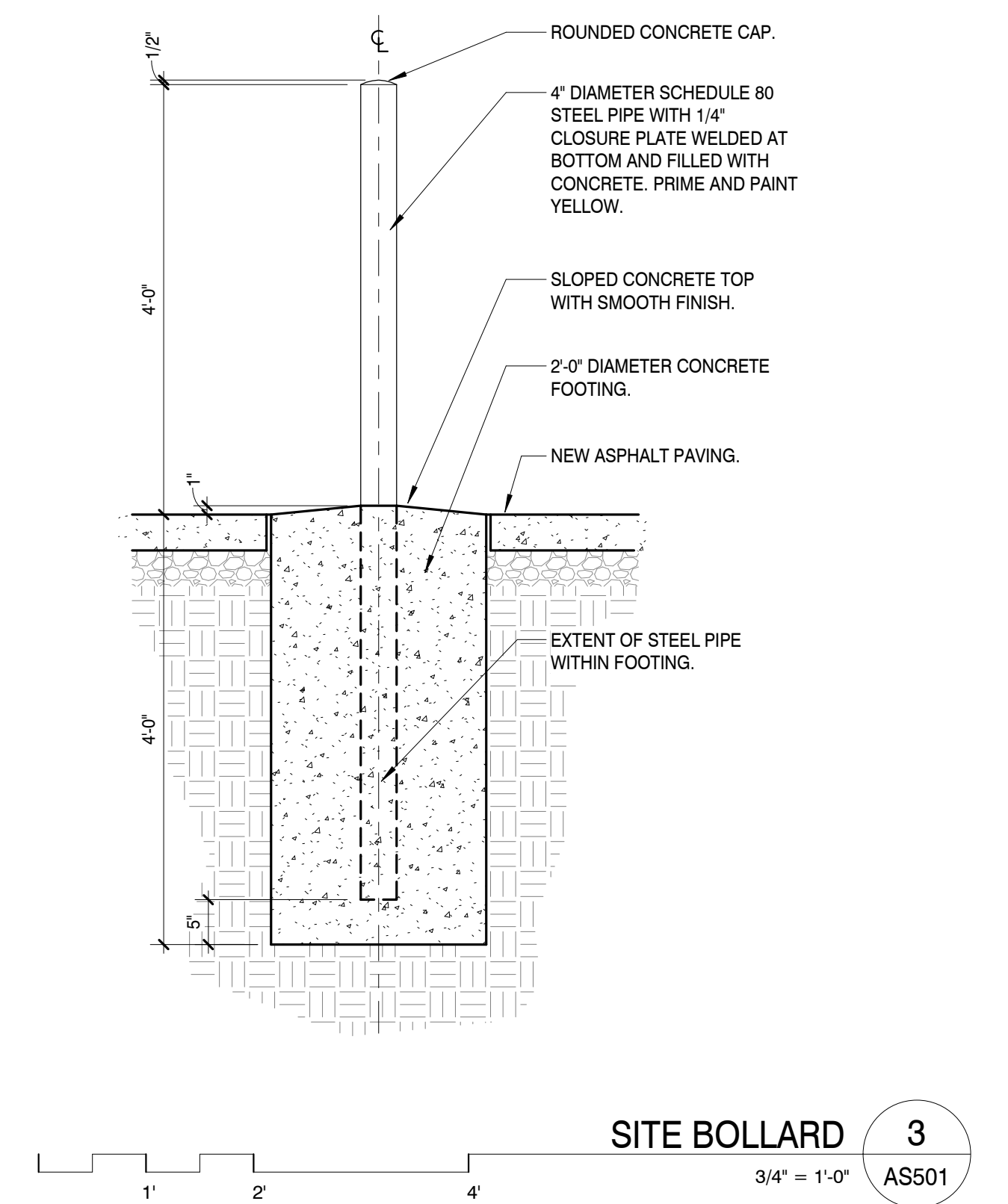
ACCESSIBLE PARKING SPACE SIGNAGE 1
NOT TO SCALE AS501



ACCESSIBLE PARKING SIGNAGE 2
NOT TO SCALE AS501



ACCESSIBLE PARKING SIGN SUPPORT 4
3/4" = 1'-0" AS501

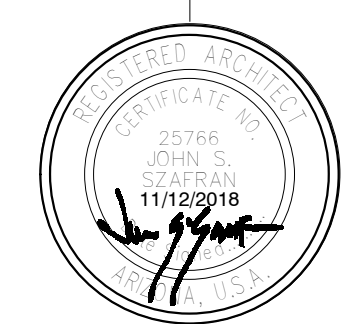


SITE BOLLARD 3
3/4" = 1'-0" AS501

SITE DETAILS

CITY OF SCOTTSDALE
REZONING/DR DEVELOPMENT SUBMITTAL
PRE-APP CASE #486 - PA - 2018

WINERY SUITES OF SCOTTSDALE
6951 / 6961 E 1ST ST. SCOTTSDALE, AZ. 85251



expires 30 June 2019

dpa
DESIGNERS OF
PROGRESSIVE
ARCHITECTURE
7272 e indian school rd ste 214
scottsdale, arizona 85251
telephone 480 941 4222
www.dpaarchitects.com

REVISION INFORMATION	
#:	Description: Date:

drawn by: YT
project no.: 18024
date: 11/13/18

