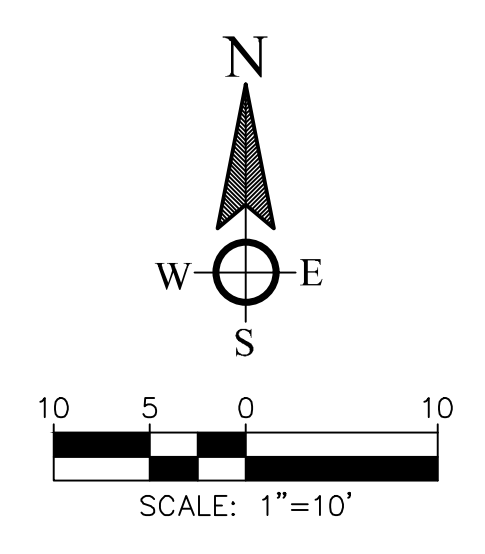
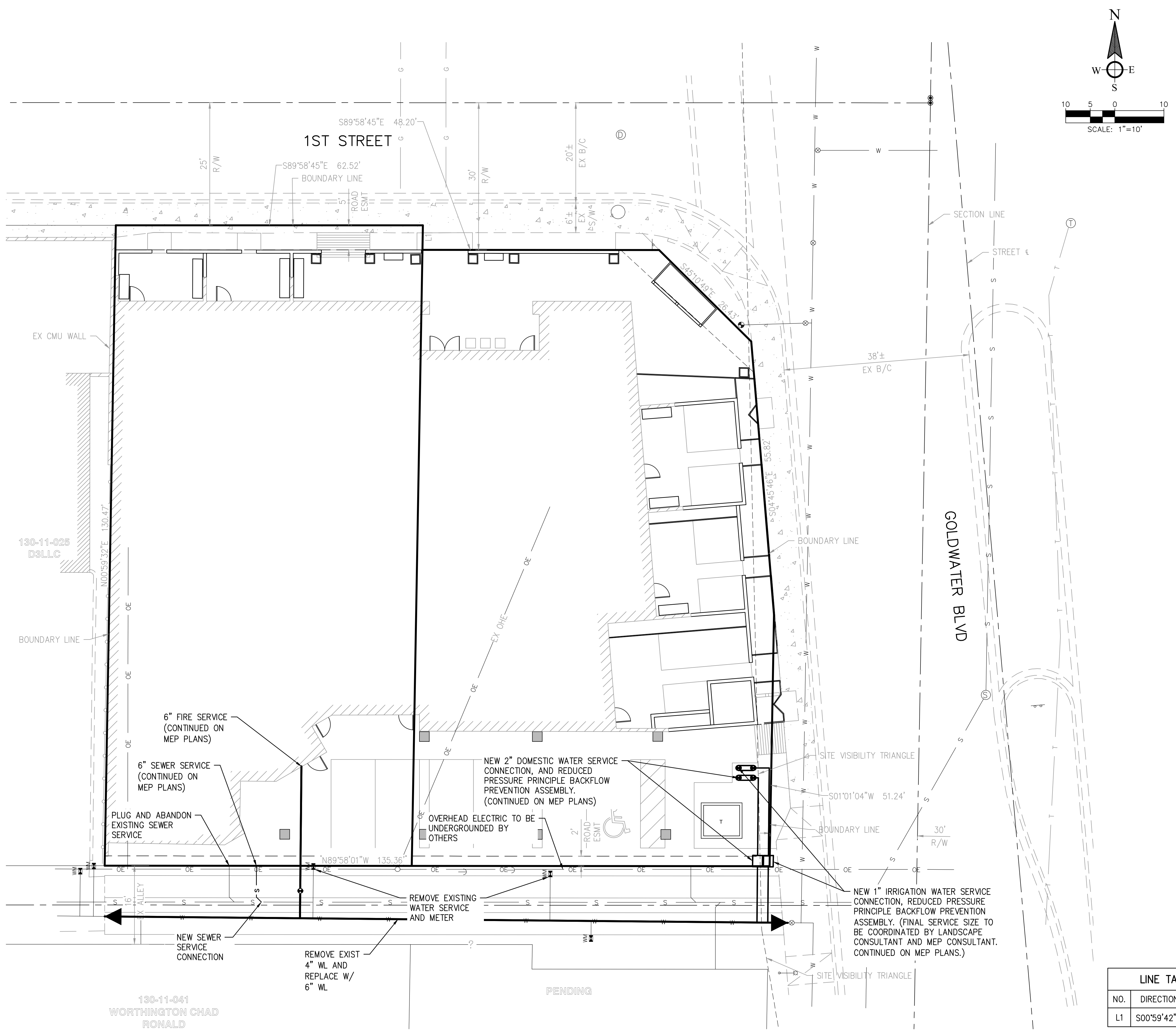


THIS DRAWING IS PROVIDED AS AN INSTRUMENT OF SERVICE BY DPA ARCHITECTS, INC. AND/OR ITS CONSULTANTS AND IS INTENDED FOR USE ON THIS PROJECT ONLY. THIS DRAWING REMAINS THE PROPERTY OF DPA ARCHITECTS, INC. AND SHALL BE RETURNED TO THEM UPON COMPLETION OF THE CONSTRUCTION WORK. PURSUANT TO THE ARCHITECTURAL WORKS COPYRIGHT ACT OF 1990, ALL DRAWINGS, SPECIFICATIONS, NOTES AND RELATED MATERIALS INCLUDING THE ORIGINAL FORM, AMENDMENTS AND CORRECTIONS ARE HEREBY REGISTERED WITH THE U.S. PATENT AND TRADEMARK OFFICE. ANY REPRODUCTION OR TRANSMISSION OF THIS DRAWING WITHOUT WRITTEN CONSENT FROM DPA ARCHITECTS, INC. IS STRICTLY PROHIBITED. © 2018 DPA ARCHITECTS, INC.



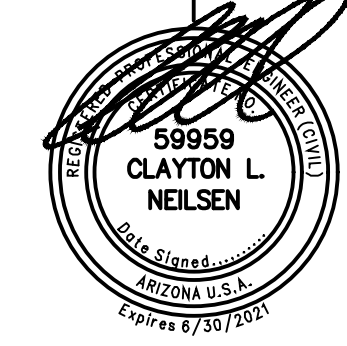
- LEGEND**
- TRANS TRANSFORMER
  - CMU CONCRETE MASONRY UNIT
  - R/W RIGHT-OF-WAY
  - OHE/OE OVERHEAD ELECTRIC
  - CL CENTERLINE
  - EX EXISTING
  - ESMT EASEMENT
  - S SEWER
  - W WATER

130-11-041  
WORTHINGTON CHAD  
RONALD

PENDING

LINE TABLE		
NO.	DIRECTION	LENGTH
L1	S00°59'42"W	5.00'

WINERY SUITES OF SCOTTSDALE  
6961 E 1ST ST. SCOTTSDALE, AZ. 85251



**dpa**  
DESIGNERS OF  
PROGRESSIVE  
ARCHITECTURE  
7272 e indian school rd ste 214  
scottsdale, arizona 85251  
telephone 480.941.4222  
www.dpaarchitects.com

REVISION INFORMATION	
#:	Description: Date:

drawn by: DAB/NAM  
project no.: 1054.02  
date: 11/12/2018

**PRELIMINARY UTILITY PLAN**  
**Bowman**  
CONSULTING

