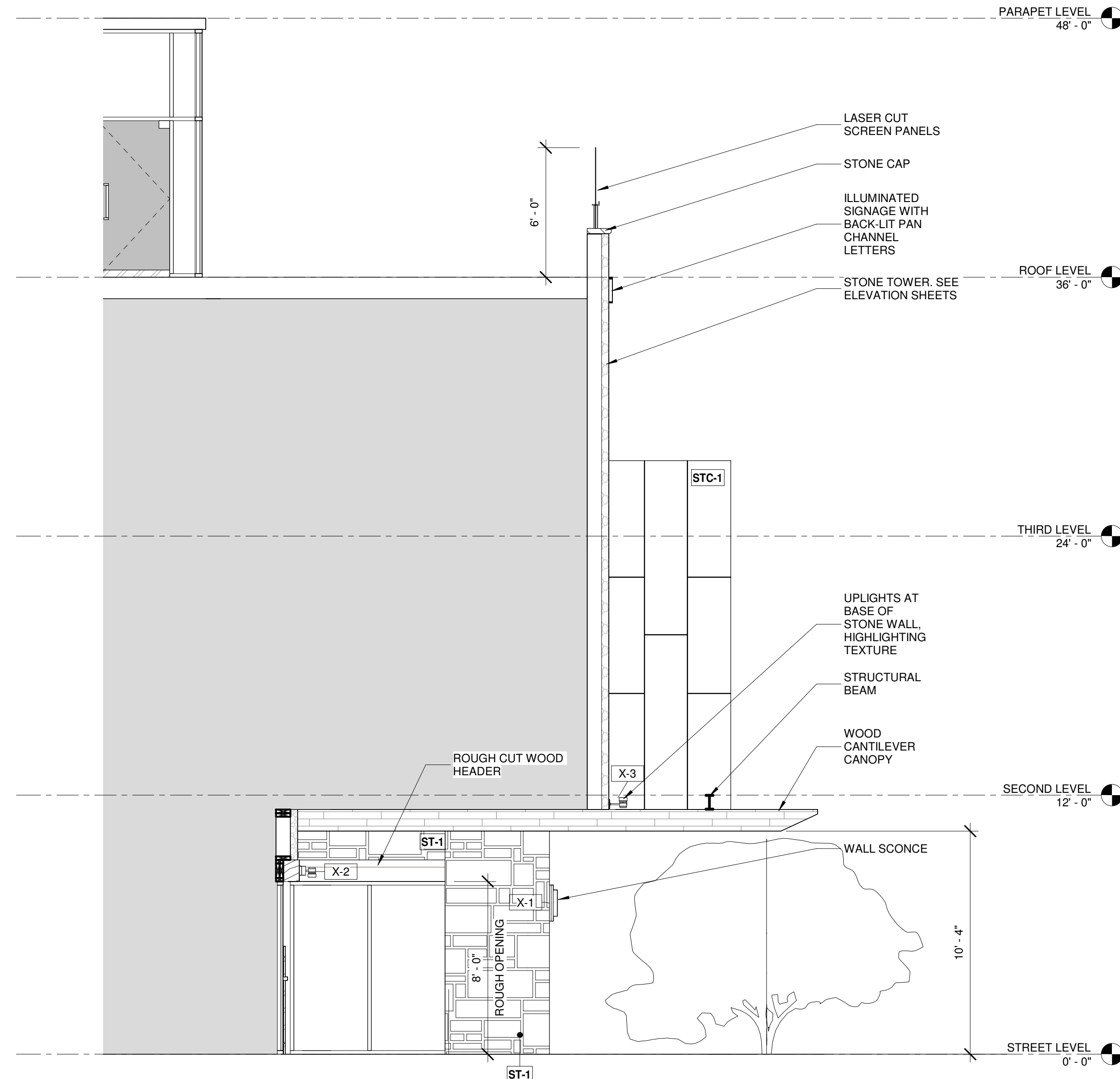
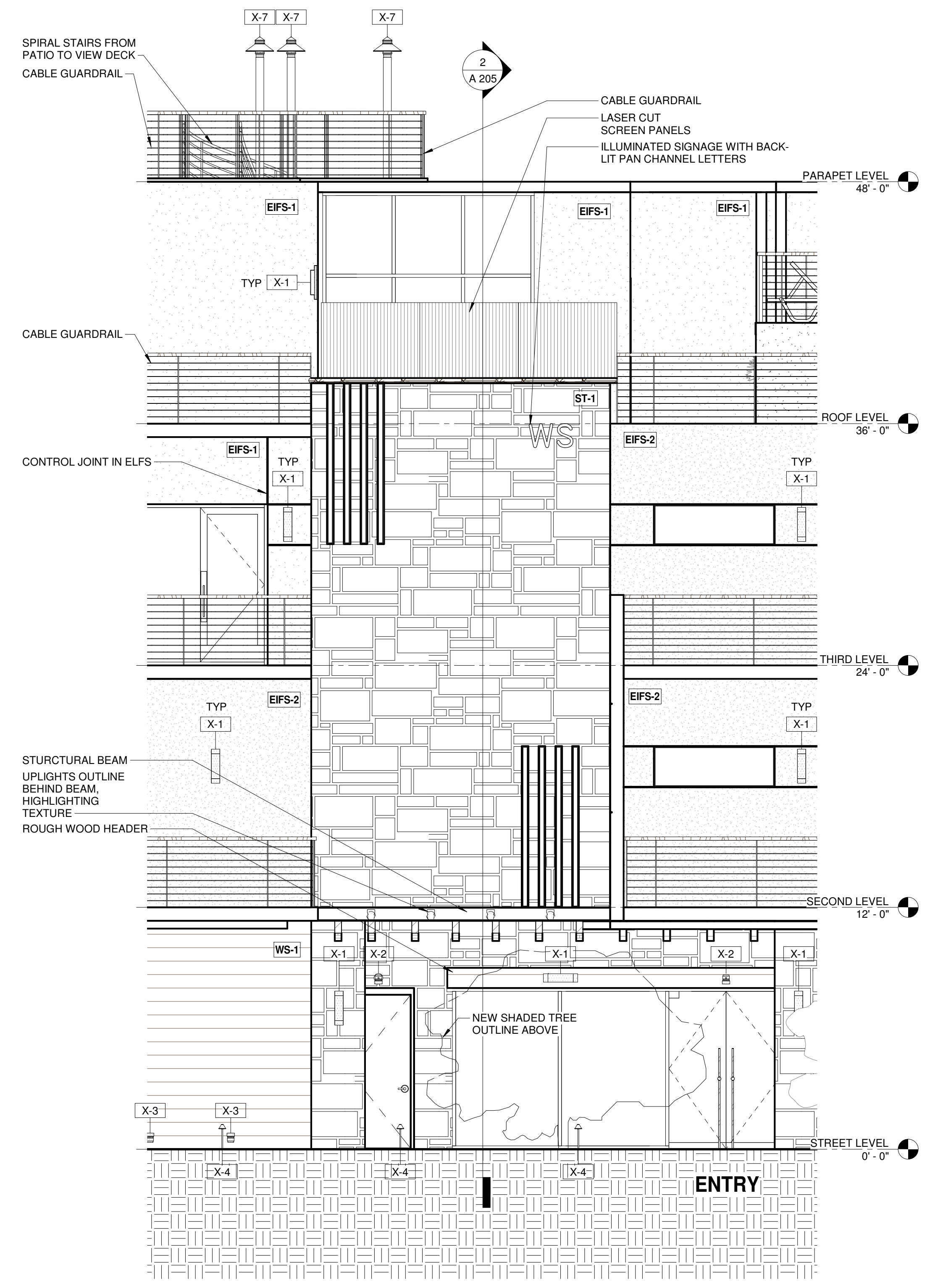


THIS DRAWING IS PROVIDED AS AN INSTRUMENT OF SERVICE BY DPA ARCHITECTS, INC. AND IS INTENDED FOR USE ON THIS PROJECT ONLY. THIS DRAWING REMAINS THE PROPERTY OF DPA ARCHITECTS, INC. AND SHALL BE RETURNED TO THEM UPON COMPLETION OF THE CONSTRUCTION WORK. PURSUANT TO THE ARCHITECTURAL WORKS COPYRIGHT ACT OF 1990, ALL DRAWINGS, SPECIFICATIONS, NOTES AND DETAILS, INCLUDING THE GENERAL FORM, ARRANGEMENT AND COMPOSITION OF PAGES AND ELEMENTS APPEARING HEREON, CONSTITUTE THE ORIGINAL, UNPUBLISHED WORK OF DPA ARCHITECTS, INC. ANY USE OF THIS DRAWING WITHOUT WRITTEN CONSENT FROM DPA ARCHITECTS, INC. IS STRICTLY PROHIBITED. © 2018 DPA ARCHITECTS, INC.



PARTIAL ENTRY SECTION 2
 1/4" = 1'-0" A 205

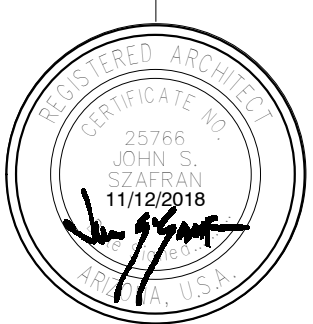


PARTIAL ELEVATION AT ENTRY 1
 1/4" = 1'-0" A 205

WALL ELEVATIONS/DETAILS AT ENTRY

CITY OF SCOTTSDALE
 REZONING/DR DEVELOPMENT SUBMITTAL
 PRE-APP CASE #486 - PA - 2018

WINERY SUITES OF SCOTTSDALE
 6951 / 6961 E 1ST ST. SCOTTSDALE, AZ. 85251



expires 30 June 2019

dpa
 DESIGNERS OF
 PROGRESSIVE
 ARCHITECTURE
 7272 e indian school rd ste 214
 scottsdale, arizona 85251
 telephone 480 941 4222
 www.dparchitctcs.com

REVISION INFORMATION

#:	Description:	Date:

drawn by: Author
 project no.: 18024
 date: 11/13/18

