

** 3D VIEWS FOR CONCEPTUAL DESIGN INTENT ONLY. CONSTRUCTION DETAILS AND FINAL DESIGN INTENT MAY NOT BE ACCURATELY DEPICTED IN THESE IMAGES**

ADDENDUM 14 - FOR CONSTRUCTION

APRIL 27, 2022

CAESARS REPUBLIC SCOTTSDALE



CAESARS
REPUBLIC
SCOTTSDALE

FASHION SQUARE - SCOTTSDALE, ARIZONA

18041.CWSA.5

<p>OWNER</p> <p>153 S Payne Stewart Dr Branson, MO 65616 Phone: 417.332.3400 www.hcwdevelopment.com</p>	<p>ARCHITECT</p> <p>319 N. Main Ave, Suite 200 Springfield, MO 65806 Phone: 417.865.6100 www.brparc.com</p>	<p>INTERIOR DESIGNER</p> <p>5646 Millon Street No. 340 Dallas, TX 75206 Phone: 214.206.1131 www.studio1design.com</p>	<p>STRUCTURAL CONSULTING ENGINEERS</p> <p>3045 S. KANSAS EXPY. SPRINGFIELD, MO 65807 PHONE: 417.738.9315 www.jandmstructural.com</p>	<p>MEP CONSULTING ENGINEERS</p> <p>Engineering Energy Innovation 2225 W. Chesterfield Blvd., Suite 200, Springfield, MO 65807 ph: 417.877.1700 fc: 417.324.7735 www.cjd-emp.com</p>	<p>STRUCTURAL PT. CONCRETE CONSULTING ENGINEERS</p> <p>PK Associates, L.L.C. 2414 S. McDowell Drive Scottsdale, Arizona 85250 Phone: (480) 922-8854 Fax: (480) 922-3739 Email: cmo@pkstructural.com Website: www.pkstructural.com</p>	<p>LIGHTING CONSULTANT</p> <p>4645 Greenville Avenue - Studio B Dallas, TX 75206 Phone: 214.414.1030 www.solighting.net</p>	<p>CIVIL ENGINEERS</p> <p>7250 N. 16th Street - Suite 210 Phoenix, AZ 85020 Phone: 602.748.1000 www.olsson.com</p>	<p>LANDSCAPE ARCHITECT</p> <p>11400 North Cave Creek Road - Suite 6 Phoenix, AZ 85020 Phone: 602.285.9200 www.biltform.com</p>	<p>FOOD SERVICE EQUIPMENT</p> <p>6077 N Travel center Dr. Tucson, AZ 85741 520.232.2682 www.catenadevelopment.com</p>
--	--	--	---	--	--	--	---	---	--

11 STORY - 265 ROOM HOTEL	
FLOOR LEVEL	AREA(SF)
1ST FLOOR	41,361
2ND FLOOR	27,930
3RD FLOOR	23,321
4TH FLOOR	23,321
5TH FLOOR	23,321
6TH FLOOR	23,321
7TH FLOOR	19,277
8TH FLOOR	15,826
9TH FLOOR	15,826
10TH FLOOR	15,826
11TH FLOOR	15,218
TOTAL BUILDING AREAS	244,548
EXTERIOR PATIO AREA	
7TH FLOOR POOL DECK	5,505
8TH FLOOR DECK	3,875
EXTERIOR BALCONY	1,331

6952-19-10
APPROVED
FINAL PLANS PLANNING
12/19/2023
DATE APPROVED BY
REVISION, PER 30-DR-2019#2

NOTES:

- ALL BUILDINGS SHALL BE TESTED FOR EMERGENCY RADIO SIGNAL STRENGTH AT FRAMING STAGE OF CONSTRUCTION. PLEASE COORDINATE INSPECTIONS WITH RADIO SYSTEMS NETWORK INTEGRATORS @ 480.312.7263
- CONTACT THE OFFICE OF ENVIRONMENTAL DESIGN @ 480.312.4202 FOR REVIEW OF DETAILS FOR GREEN BUILDING COMPLIANCE.

ASSESSOR'S PARCEL NUMBER:
173-37-010

PROJECT ADDRESS:
4747 N GOLDWATER BOULEVARD
SCOTTSDALE, AZ 85251

DEVELOPMENT REVIEW BOARD CASE NUMBER:
30-DR-2019

ZONING CASE NUMBER:
25-ZN-2015

PLAN CHECK NUMBER:
.....

6952-19-10

APPROVED
FINAL PLANS PLANNING

12/19/2023

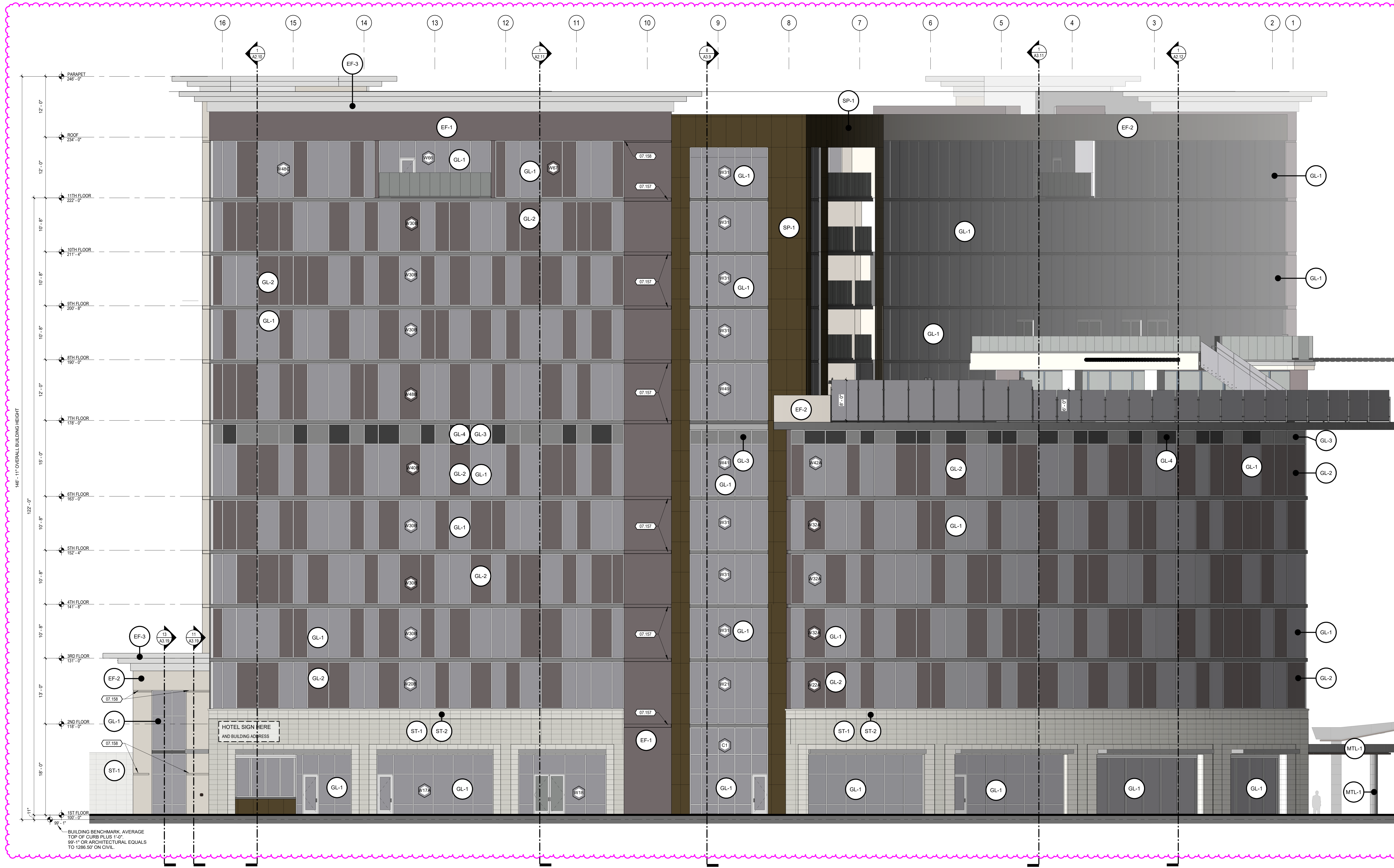
DATE APPROVED BY
REVISION, PER 30-DR-2019#2

KEYNOTE LEGEND

07.157	8" HORIZONTAL EIFS REVEAL
07.158	4" HORIZONTAL EIFS REVEAL

EXTERIOR FINISH MATERIAL LEGEND

TYPE	MATERIAL	COLOR	GRAPHIC
EF-1	EIFS	MANUFACTURER: DRYVIT FINISH COLOR: 617ST WINTERS EYE	
EF-2	EIFS	MANUFACTURER: DRYVIT FINISH COLOR: 194ST DOVER SKY	
EF-3	EIFS	MANUFACTURER: DRYVIT FINISH COLOR: 472ST CAPTAIN	
SP-1	ACCENT PANEL	MANUFACTURER: ALUCOBOND PLUS FINISH COLOR: BRONZE - NATURAL COLLECTION	
SP-2	STONE PANEL	MANUFACTURER: STONE PANELS INT. LLC FINISH COLOR: WHITE CARRARA MARBLE	
ST-1	MASONRY STONE VENEER	MANUFACTURER: SOLSTICE STONE FINISH COLOR: BARCELONA BEIGE WIDE COMBED	
ST-2	MASONRY STONE VENEER	MANUFACTURER: SOLSTICE STONE FINISH COLOR: GLACIER HONED	
WD-1	WOOD PLANK	MANUFACTURER: 1X WOOD PLANKS FINISH COLOR: DARK BROWN STAIN	
MTL-1	ALUMINUM WRAP	MANUFACTURER: REYNOLBOND FINISH COLOR: MICA PLATINUM	



GLAZING FINISH MATERIAL LEGEND

GLAZING	MANUFACTURER: PPG FINISH COLOR: SOLARGRAY SOLARBAN 60	GRAPHIC
GL-1	MANUFACTURER: PPG FINISH COLOR: SOLARGRAY SOLARBAN 60	
GL-2	MANUFACTURER: PPG FINISH COLOR: GRAYLITE II	
GL-3	MANUFACTURER: PPG FINISH COLOR: SOLARGRAY SOLARBAN 60	
GL-4	MANUFACTURER: PPG FINISH COLOR: GRAYLITE II	

REVISIONS

NO.	DESCRIPTION	DATE	BY	DATE
2	ADDENDUM 02	8/23/2019		
8	ADDENDUM 08	10/10/2019		
9	ADDENDUM 09	11/16/2019		
11	CITY RESPONSE	12/16/2019		
13	ADDENDUM 13	5/29/2020		
14	ADDENDUM 14	04/27/2022		

NORTH ELEVATION

CAESARS REPUBLIC SCOTTSDALE

FASHION SQUARE - SCOTTSDALE, ARIZONA

BUTLER, ROSENBERG & PARTNERS, INC.

319 N MAIN ST. SUITE 200, SPRINGFIELD, MISSOURI, 65806 T: 417-865-6100

STATE OF ARIZONA ARCHITECTURE OF ARCHITECTS REGISTERED FOR ARCHITECTURE



DRAWN BY SA, ME, JSN, GM
CHECKED BY BJV, GM
ISSUE DATE APRIL 27, 2022
PROJECT 18041.CVS4.S

APRIL 27, 2022
Exp. 03.31.2025
GEOFFREY H. BUTLER
ARIZONA ARCHITECTURAL LICENSE NUMBER: 28748

A2.1

1 NORTH ELEVATION
1/8" = 1'-0"

6952-19-10
APPROVED
 FINAL PLANS PLANNING
 12/19/2023
 DATE APPROVED BY
 REVISION, PER 30-DR-2019#2

KEYNOTE LEGEND

07.157	8" HORIZONTAL EIFS REVEAL
07.158	4" HORIZONTAL EIFS REVEAL
07.163	4" VERTICAL EIFS REVEAL
07.961	EXTERIOR WALL TO WALL EXPANSION JOINT ASSEMBLY

EXTERIOR FINISH MATERIAL LEGEND

TYPE	MATERIAL	COLOR	GRAPHIC
EF-1	EIFS	MANUFACTURER: DRYVIT FINISH COLOR: 6757 WINTERS EVE	
EF-2	EIFS	MANUFACTURER: DRYVIT FINISH COLOR: 1045T DOVER SKY	
EF-3	EIFS	MANUFACTURER: DRYVIT FINISH COLOR: 4725T CAPTAIN	
SP-1	ACCENT PANEL	MANUFACTURER: ALUCOBOND PLUS FINISH COLOR: BRONZE - NATURAL COLLECTION	
SP-2	STONE PANEL	MANUFACTURER: STONE PANELS INT. LLC FINISH COLOR: WHITE CARRARA MARBLE	
ST-1	MASONRY STONE VENEER	MANUFACTURER: SOLTICE STONE FINISH COLOR: BARCELONA BEIGE WIDE COMBED	
ST-2	MASONRY STONE VENEER	MANUFACTURER: SOLTICE STONE FINISH COLOR: GLACIER HONEY	
WD-1	WOOD PLANK	MANUFACTURER: 1X WOOD PLANKS FINISH COLOR: DARK BROWN STAIN	
MTL-1	ALUMINUM WRAP	MANUFACTURER: REYNOLBOND FINISH COLOR: MICA PLATINUM	

GLAZING FINISH MATERIAL LEGEND

GLAZING	MATERIAL	COLOR	GRAPHIC
GL-1	GLAZING	MANUFACTURER: PPG FINISH COLOR: SOLARGRAY SOLARBAN 60	
GL-2	GLAZING	MANUFACTURER: PPG FINISH COLOR: GRAYLITE II	
GL-3	SPANDREL GLAZING	MANUFACTURER: PPG FINISH COLOR: SOLARGRAY SOLARBAN 60	
GL-4	SPANDREL GLAZING	MANUFACTURER: PPG FINISH COLOR: GRAYLITE II	

REVISIONS

1	ADDENDUM 01	8/16/2019	9	ADDENDUM 09	11/15/2019
2	ADDENDUM 02	8/23/2019	11	CITY RESPONSE	12/18/2019
			13	ADDENDUM 13	5/29/2020
			14	ADDENDUM 14	04/27/2022

EAST ELEVATION

CAESARS REPUBLIC SCOTTSDALE

FASHION SQUARE - SCOTTSDALE, ARIZONA

BUTLER, ROSENBERG & PARTNERS, INC.

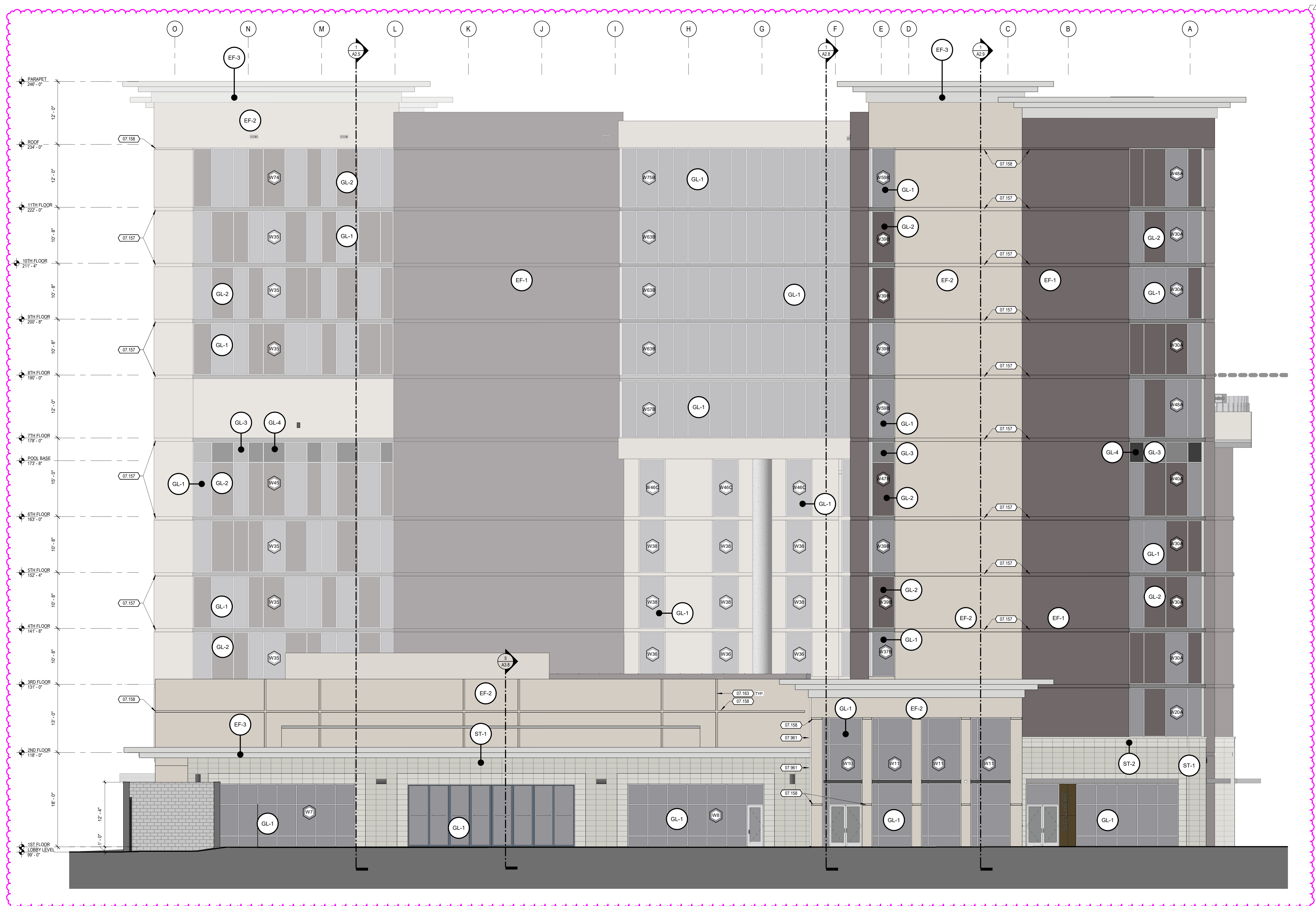
319 N MAIN ST. SUITE 200, SPRINGFIELD, MISSOURI, 65806 T: 417-865-6100

	DRAWN BY SA, ME, JSN, GM CHECKED BY BJV, GM	ISSUE DATE APRIL 27, 2022 PROJECT 18241.CVS4.S
--	--	---

APRIL 27, 2022
 Exp. 03.31.2025
 GEOFFREY H. BUTLER
 ARIZONA ARCHITECTURAL LICENSE NUMBER: 28748

A2.2

BM 360.11841 - CVS4 CAESARS REPUBLICA_ARCH_CVS4_2019.rvt 4/28/2022 10:28:29 AM



1 EAST ELEVATION
 3/8" = 1'-0"

6952-19-10

APPROVED
FINAL PLANS PLANNING

12/19/2023

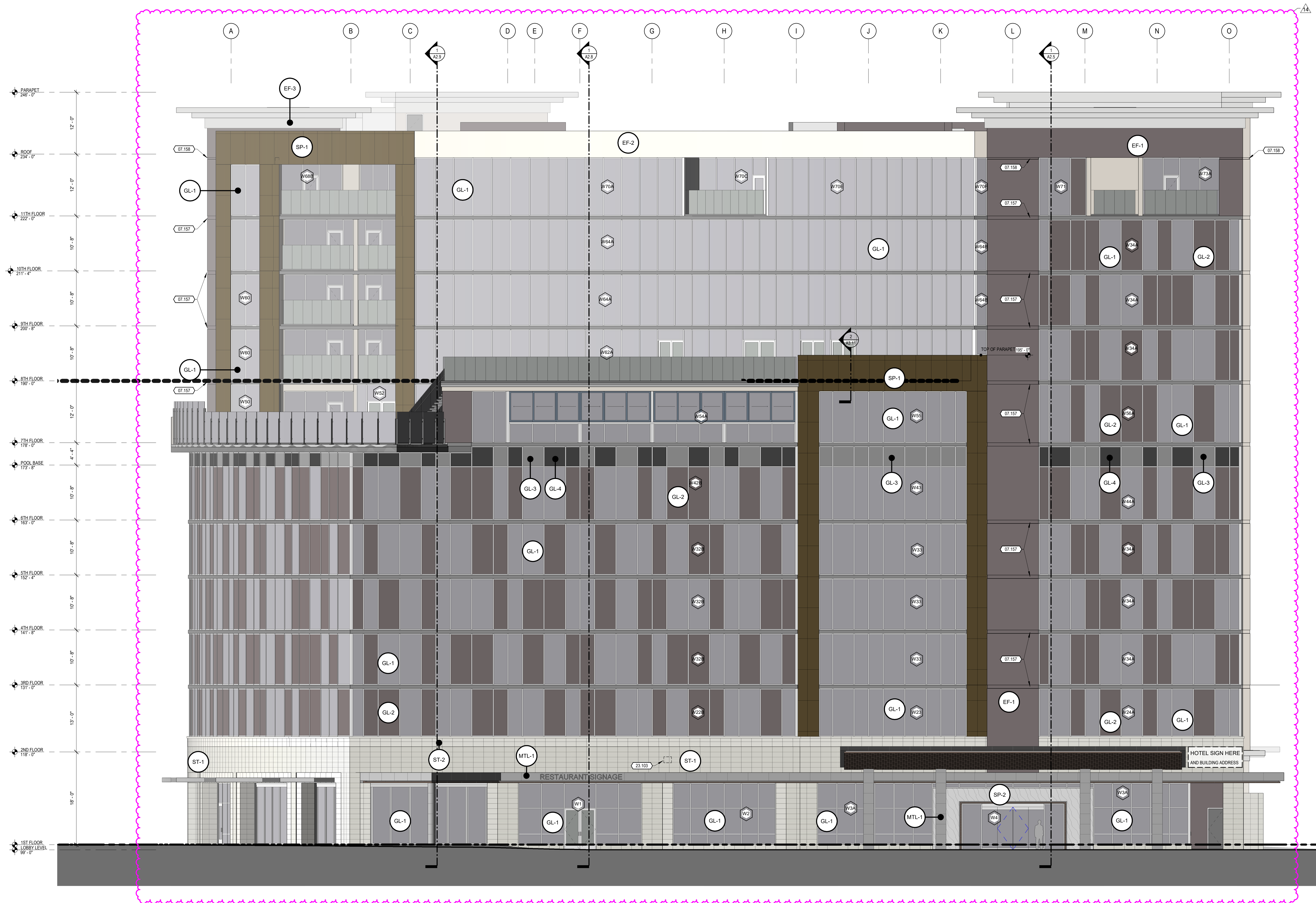
DATE APPROVED BY
REVISION, PER 30-DR-2019#2

KEYNOTE LEGEND

07.157	8" HORIZONTAL EFS REVEAL
07.158	4" HORIZONTAL EFS REVEAL
23.103	PREFINISHED FLUSH MOUNT POWER VENT BY FIREPLACE MANUFACTURER. COORDINATE REQUIRED MOUNTING HEIGHT WITH FIREPLACE INSTALLER/PROVIDER.

EXTERIOR FINISH MATERIAL LEGEND

TYPE	MATERIAL	COLOR	GRAPHIC
EF-1	EIFS	MANUFACTURER: DRYVIT FINISH COLOR: 615T WINTER'S EYE	
EF-2	EIFS	MANUFACTURER: DRYVIT FINISH COLOR: 1945T DOVER SKY	
EF-3	EIFS	MANUFACTURER: DRYVIT FINISH COLOR: 4025T CAPTAIN	
SP-1	ACCENT PANEL	MANUFACTURER: ALUCOROND PLUS FINISH COLOR: BRONZE - NATURAL COLLECTION	
SP-2	STONE PANEL	MANUFACTURER: STONE PANELS INT. LLC FINISH COLOR: WHITE CARRARA MARBLE	
ST-1	MASONRY STONE VENEER	MANUFACTURER: SOLSTICE STONE FINISH COLOR: BARCELONA BEIGE WIDE COMBED	
ST-2	MASONRY STONE VENEER	MANUFACTURER: SOLSTICE STONE FINISH COLOR: GLACIER HONED	
WD-1	WOOD PLANK	MANUFACTURER: 1X WOOD PLANKS FINISH COLOR: DARK BROWN STAIN	
MTL-1	ALUMINUM WRAP	MANUFACTURER: REYNOLBOND FINISH COLOR: MICA PLATINUM	



GLAZING FINISH MATERIAL LEGEND

GLAZING	MANUFACTURER	FINISH COLOR	GRAPHIC
GL-1	PPG	SOLARGRAY SOLARBAN 60	
GL-2	PPG	GRAYLITE II	
GL-3	PPG	SOLARGRAY SOLARBAN 60	
GL-4	PPG	GRAYLITE II	

REVISIONS

NO.	DESCRIPTION	DATE	BY	REASON
1	ADDENDUM 01	8/16/2019		CITY RESPONSE
2	ADDENDUM 02	8/23/2019		CITY RESPONSE
11	ADDENDUM 13	5/29/2020		CITY RESPONSE
12	ADDENDUM 14	9/27/2022		CITY RESPONSE

WEST ELEVATION

CAESARS REPUBLIC SCOTTSDALE

FASHION SQUARE - SCOTTSDALE, ARIZONA

BUTLER, ROSENBERG & PARTNERS, INC.

319 N MAIN ST. SUITE 200, SPRINGFIELD, MISSOURI, 65806 T: 417-865-6100

DRAWN BY SA, ME, JSN, GM	ISSUE DATE APRIL 27, 2022
CHECKED BY BJV, GM	PROJECT 18841.CWSA.5

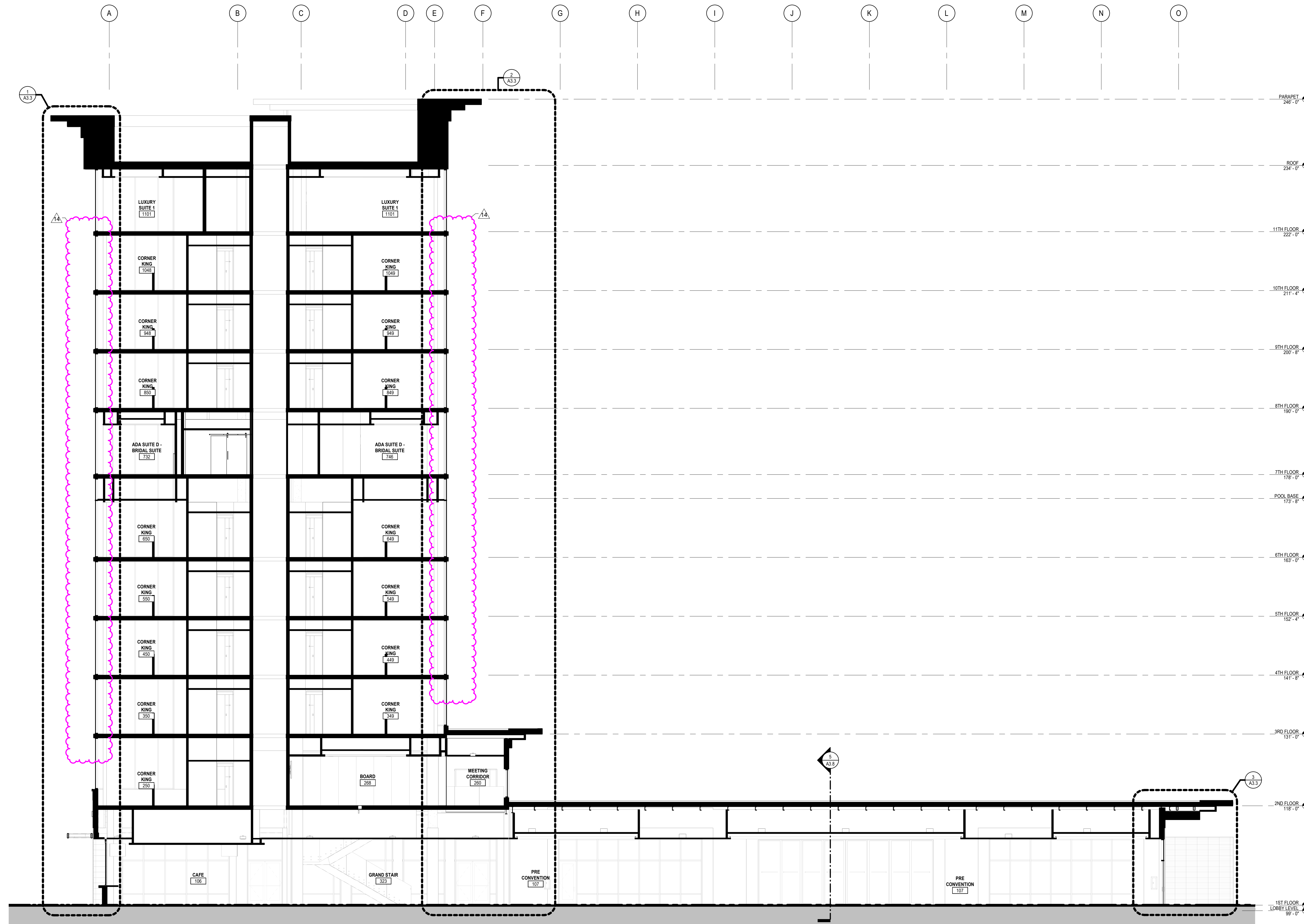


APRIL 27, 2022
Exp. 03.31.2025
GEOFFREY H. BUTLER
ARCHITECTURAL LICENSE NUMBER: 28748

A2.4

1 WEST ELEVATION
1/8" = 1'-0"

6952-19-10
APPROVED
 FINAL PLANS PLANNING
 12/19/2023
 DATE APPROVED BY
 REVISION, PER 30-DR-2019#2



1 NORTH / SOUTH BUILDING SECTION
 1/8" = 1'-0"

REVISIONS			
3	ADDENDUM 03	8/30/2019	
9	ADDENDUM 09	11/15/2019	
13	ADDENDUM 13	5/29/2020	
14	ADDENDUM 14	04/27/2022	

BUILDING SECTION
 CAESARS REPUBLIC SCOTTSDALE
 FASHION SQUARE - SCOTTSDALE, ARIZONA

BUTLER, ROSENBERY & PARTNERS, INC.
 319 N MAIN ST. SUITE 200, SPRINGFIELD, MISSOURI, 65806 T: 417-865-6100
STATE OF MISSOURI CERTIFICATE OF ARCHITECTURAL REGISTRATION



COPYRIGHT © 2019 BUTLER, ROSENBERY & PARTNERS, INC.
 DRAWN BY SA, ME, JSN, GM
 CHECKED BY BJV, GM
 ISSUE DATE APRIL 27, 2022
 PROJECT 18841.CVSAS.5

APRIL 27, 2022
 Exp. 03.31.2025
 GEOFFREY H. BUTLER
 ARIZONA ARCHITECTURAL LICENSE NUMBER: 20748

A2.10

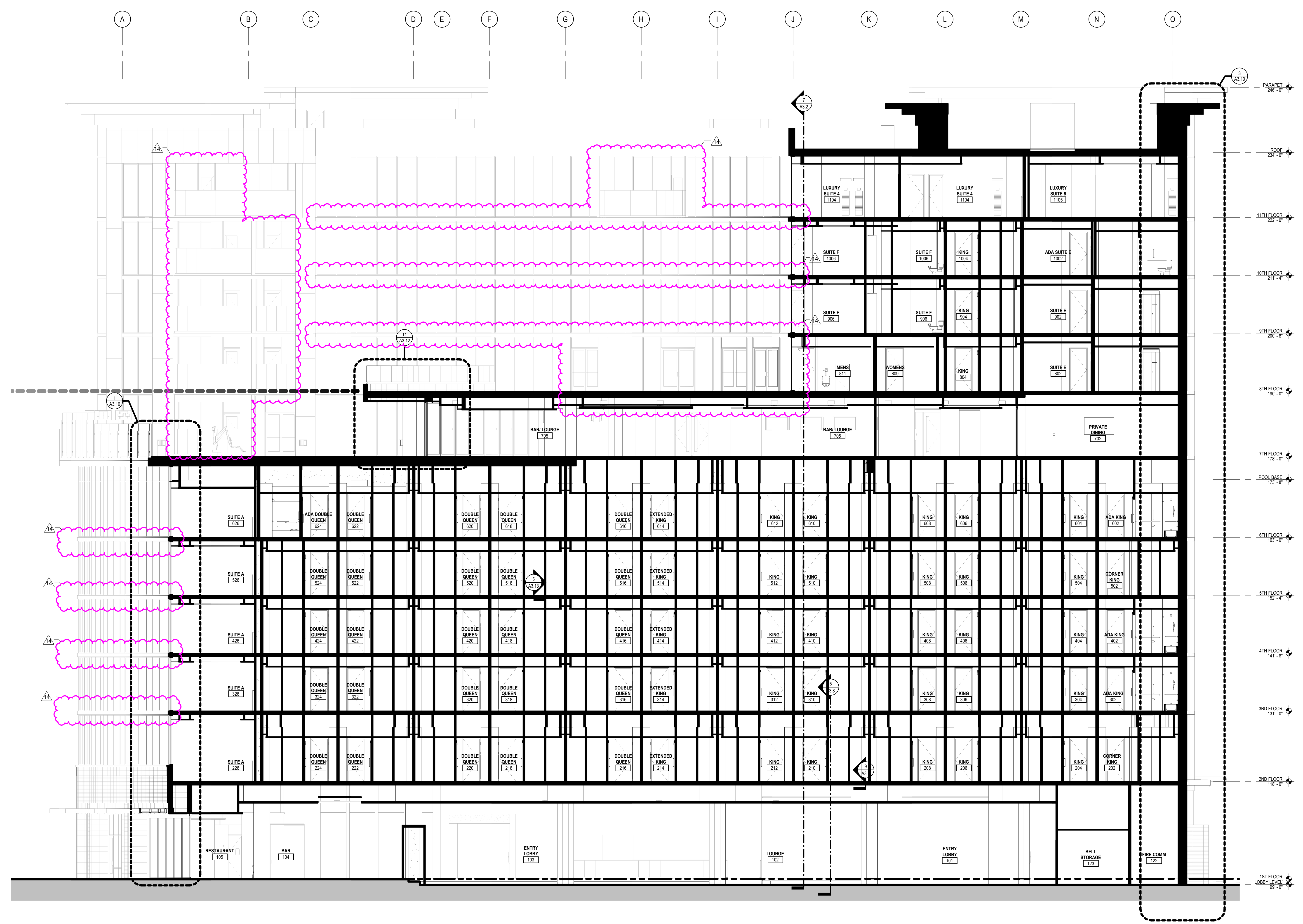
6952-19-10

APPROVED

FINAL PLANS PLANNING

12/19/2023

DATE APPROVED BY
REVISION, PER 30-DR-2019#2



1 NORTH / SOUTH BUILDING SECTION
1/8" = 1'-0"

REVISIONS			
3	ADDENDUM 03	8/30/2019	
9	ADDENDUM 09	11/15/2019	
13	ADDENDUM 13	5/29/2020	
14	ADDENDUM 14	04/27/2022	

BUILDING SECTION

CAESARS REPUBLIC SCOTTSDALE
FASHION SQUARE - SCOTTSDALE, ARIZONA

BUTLER, ROSENBERY & PARTNERS, INC.
319 N MAIN ST. SUITE 200, SPRINGFIELD, MISSOURI, 65806 T: 417-865-6100
STATE OF ARIZONA DEPARTMENT OF REVENUE - REGISTERED ARCHITECTS

COPYRIGHT © 2019 BUTLER, ROSENBERY & PARTNERS, INC.
DRAWN BY SA, ME, JSN, GM
CHECKED BY BJV, GM
ISSUE DATE APRIL 27, 2022
PROJECT 18841.CVSA.5



APRIL 27, 2022
Exp. 03.31.2025
GEOFFREY H. BUTLER
ARIZONA ARCHITECTURAL LICENSE NUMBER: 28748

A2.12