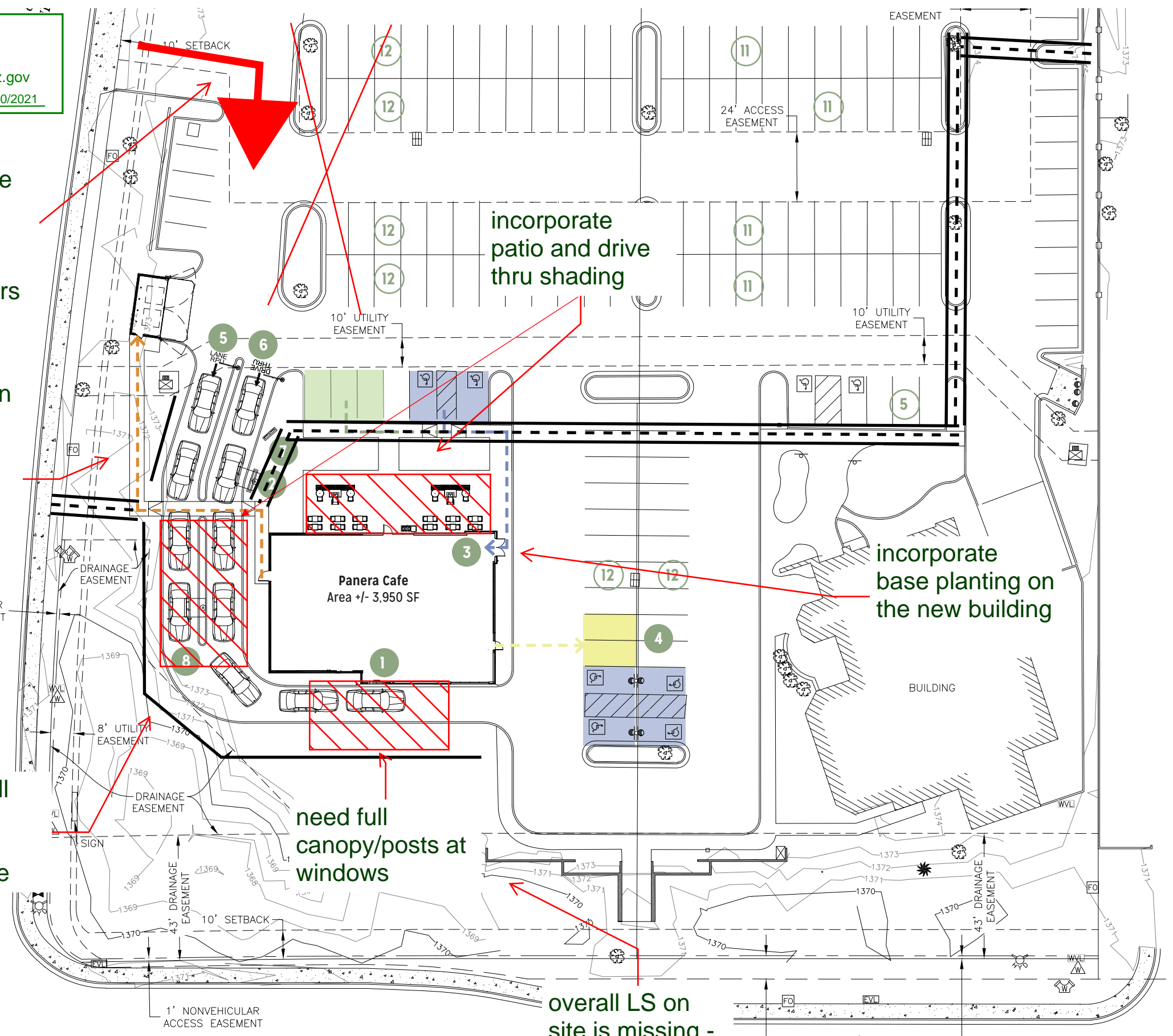


Planning Review By:
 Name: Katie Posler
 Phone: (480) 312-2703
 e-mail: kposler@scottsdaleaz.gov
 Review Cycle: 1 Date: 11/10/2021

entrance area/parking/drive thru line is very congested. try to rework area to avoid a line of cars

need pedestrian connections - how are pedestrian getting to the buildings + streets

provide 3' tall site wall to screen drive thru per code



incorporate patio and drive thru shading

incorporate base planting on the new building

need full canopy/posts at windows

overall LS on site is missing - there shall be no more than 7' of DG

SITE PATHWAYS

DEDICATED PARKING

signs are per separate plan review

- 1 — Drive Thru Window
- 2 — Menu Board
- 3 — Cafe Main Entry
- 4 — Signed Pull Forward Spaces
- 5 — Rapid Pick-Up Lane Entry
- 6 — Drive Thru Entry
- 7 — Preview Sign
- 8 — "Stop Here" / Merge Line
- 9 — Existing Pylon Sign
- x — Parking Count (121 total)
- > Rapid Pick-up Path of Travel
- > ADA Path of Travel
- > DT Associate Path of Travel
- > Service Path of Travel
- RPU Parking
- ADA Parking
- Drive Thru Pull Forward

parcels need to stand alone to development standards

Enlarged Site Plan NTS

Proprietary, Panera LLC