

**ST. LOUIS**

Power House at Union Station  
401 S. 18th Street, Suite 200  
St. Louis, MO 63103  
314.984.9887 *tel*

**ST. CHARLES**

1520 S. Fifth Street  
Suite 307  
St. Charles, MO 63303  
636.978.7508 *tel*

**DALLAS**

6175 Main Street  
Suite 367  
Frisco, TX 75034  
972.624.6000 *tel*

**PHOENIX**

2701 E. Camelback Road  
Suite 175  
Phoenix, AZ 85016  
602.795.4111 *tel*

February 01, 2022

Dear Neighbor,

We have applied for Design Review Board for the property located at 8970 E. Shea Blvd., Scottsdale, AZ. This request is for development of Panera Bakery Cafe. The case number assigned to this project is 11-03-PA-2021.

This letter is being sent to all property owners within 750 feet of the property at the request of the City of Scottsdale Planning Division. Enclosed for your review is a copy of the site plan and elevations of the proposed development. If you have any questions regarding this proposal, please call me at 314-984-9887 or e-mail me at [cwilson@colestl.com](mailto:cwilson@colestl.com).

The City of Scottsdale has assigned this case to Katie Posler of their Planning Division staff. He/she can be reached at 480-312-2703 or [kposler@scottsdaleaz.gov](mailto:kposler@scottsdaleaz.gov) should you have any questions regarding the public hearing process. If you have sold this property in the interim, please forward this correspondence to the new owner.

Sincerely,

Chris Wilson  
Cole & Associates



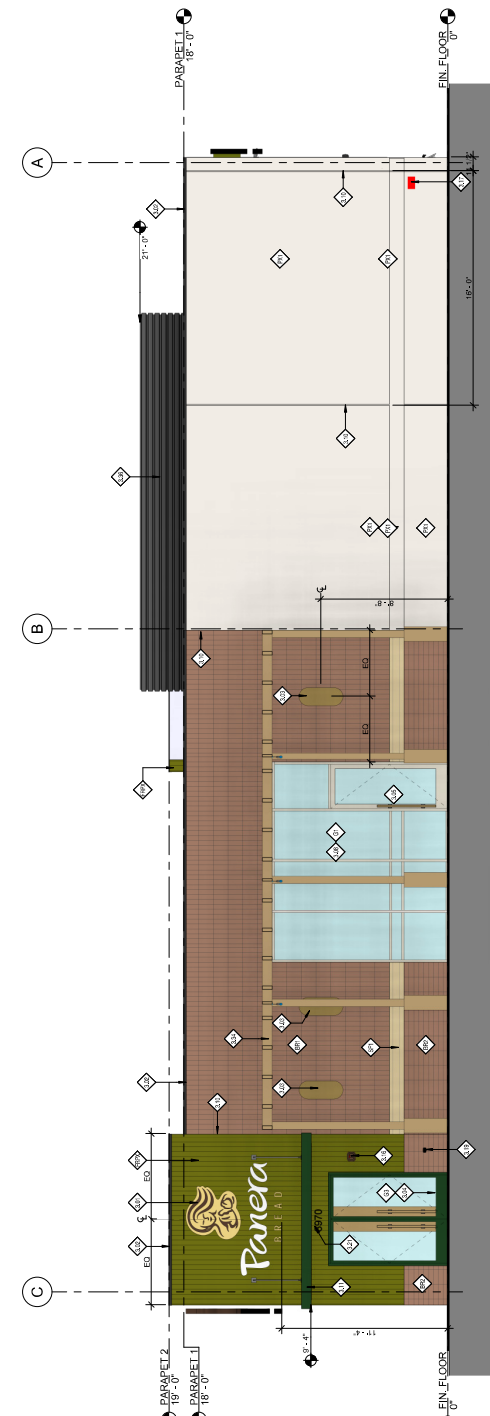




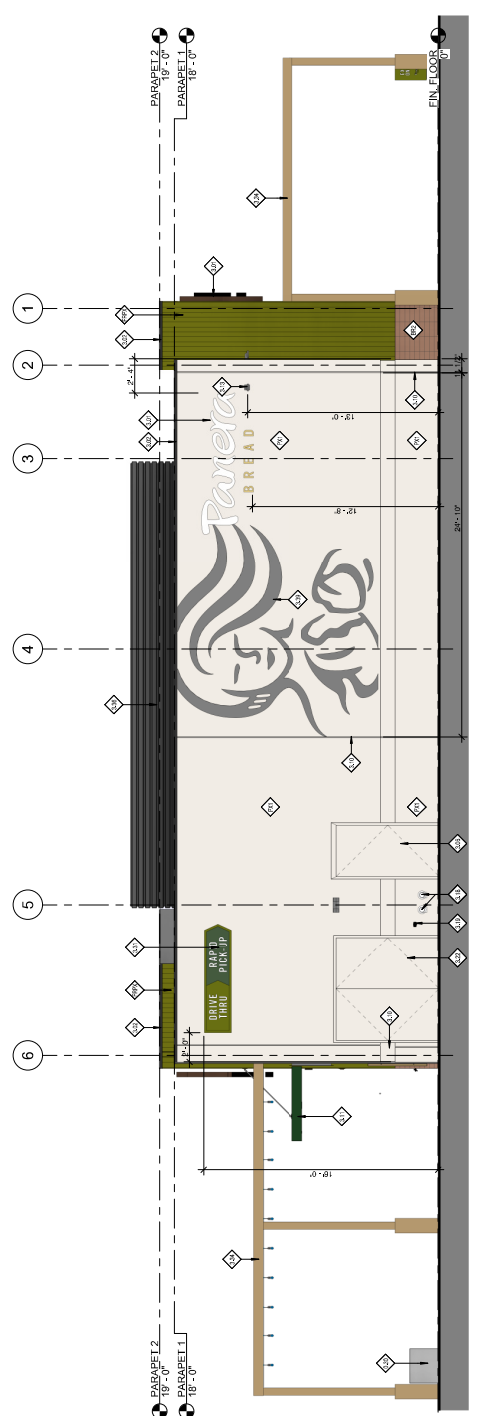
No.	Description	Date

**KEYED NOTES**

- 0.36 PAINT POLISHED CONC. RETAINING WALL. REFER TO 22-0462.
- 0.37 LOCATION OF INTERNALLY ILLUMINATED CLIP LETTERS AND/OR UNDER SEPARATE PERMIT (C.G. TO PROVIDE BLOCKING IN WALL FOR SIGN REQUIREMENTS). REFER TO 22-0462 FOR ACCESS AS REQUIRED UNDER SEPARATE SIGNAGE PERMIT.
- 3.02 DESIGNER TO VERIFY ACCESS TO ALL EXISTING AND PROPOSED WALLS AND LIGHT FIXTURES. FINURES SHALL BE PROVIDED AND LOCATIONS FROM TENANT DRAWINGS. REFER TO REFLECTED CEILING PLAN FOR LIGHT FIXTURE LOCATIONS.
- 3.04 MAIN ENTRANCE DOOR REFER TO FLOOR A001 & A002 FOR FURTHER INFORMATION.
- 3.05 ENTRANCE CANTONMENT REFER TO A001 & A002 FOR ADDITIONAL INFORMATION.
- 3.06 ALUMINUM STOREFRONT SYSTEM WITH INSULATED GLAZING SYSTEM TO MATCH ADJACENT ALUMINUM STOREFRONT. REFER TO A001 FOR ADDITIONAL INFORMATION.
- 3.08 ALUMINUM STOREFRONT SYSTEM WITH INSULATED GLAZING SYSTEM TO MATCH ADJACENT ALUMINUM STOREFRONT. REFER TO A001 FOR ADDITIONAL INFORMATION.
- 3.10 CONTROL JOINTS WHERE INDICATED. REFER TO DETAILS FOR FURTHER INFORMATION.
- 3.11 UNDERSEAL PROVIDE INSTALLED BY SHEET METAL WORKERS TO MATCH EXISTING UNDERSEAL TO HAVE FINISH TO MATCH EXISTING. COORDINATE LOCATION WITH LOCAL FIRE DEPARTMENT.
- 3.13 SECURITY CAMERA INSTALLED BY PANERA. COORDINATE LOCATION WITH LOCAL FIRE DEPARTMENT PRIOR TO INSTALLATION.
- 3.16 HOSE REEL BRACKET SHALL BE PLACED ABOVE ENTIRE DOOR. FIRE DEPARTMENT CONNECTION (FDC) MINIMUM 3" ABOVE GRADE.
- 3.18 HOSE REEL BRACKET SHALL BE PLACED ABOVE ENTIRE DOOR. HOSE REEL SHALL BE INSTALLED IN ACCORDANCE WITH LOCAL FIRE DEPARTMENT REQUIREMENTS.
- 3.19 HOSE REEL BRACKET SHALL BE PLACED ABOVE ENTIRE DOOR. HOSE REEL SHALL BE INSTALLED IN ACCORDANCE WITH LOCAL FIRE DEPARTMENT REQUIREMENTS.
- 3.21 FIRE DEPARTMENT CONNECTION (FDC) MINIMUM 3" ABOVE GRADE. REFER TO LOCAL FIRE DEPARTMENT FOR FURTHER INFORMATION.
- 3.22 REFER TO LOCAL FIRE DEPARTMENT FOR FURTHER INFORMATION.
- 3.23 DRIVE THRU SIGN AS PART OF TENANT SIGNAGE BY SIGN VENDOR. LOC TO BE PROVIDED BY SIGN VENDOR. REFER TO LOCAL FIRE DEPARTMENT FOR ACCESS AS REQUIRED.
- 3.24 REFER TO LOCAL FIRE DEPARTMENT FOR FURTHER INFORMATION.
- 3.26 REFER TO LOCAL FIRE DEPARTMENT FOR FURTHER INFORMATION.
- 3.28 REFER TO LOCAL FIRE DEPARTMENT FOR FURTHER INFORMATION.
- 3.29 REFER TO LOCAL FIRE DEPARTMENT FOR FURTHER INFORMATION.
- 3.30 REFER TO LOCAL FIRE DEPARTMENT FOR FURTHER INFORMATION.
- 3.31 REFER TO LOCAL FIRE DEPARTMENT FOR FURTHER INFORMATION.
- 3.32 REFER TO LOCAL FIRE DEPARTMENT FOR FURTHER INFORMATION.
- 3.33 REFER TO LOCAL FIRE DEPARTMENT FOR FURTHER INFORMATION.
- 3.34 REFER TO LOCAL FIRE DEPARTMENT FOR FURTHER INFORMATION.
- 3.35 REFER TO LOCAL FIRE DEPARTMENT FOR FURTHER INFORMATION.
- 3.36 REFER TO LOCAL FIRE DEPARTMENT FOR FURTHER INFORMATION.
- 3.37 REFER TO LOCAL FIRE DEPARTMENT FOR FURTHER INFORMATION.
- 3.38 REFER TO LOCAL FIRE DEPARTMENT FOR FURTHER INFORMATION.
- 3.39 REFER TO LOCAL FIRE DEPARTMENT FOR FURTHER INFORMATION.
- 3.40 REFER TO LOCAL FIRE DEPARTMENT FOR FURTHER INFORMATION.
- 3.41 REFER TO LOCAL FIRE DEPARTMENT FOR FURTHER INFORMATION.
- 3.42 REFER TO LOCAL FIRE DEPARTMENT FOR FURTHER INFORMATION.
- 3.43 REFER TO LOCAL FIRE DEPARTMENT FOR FURTHER INFORMATION.
- 3.44 REFER TO LOCAL FIRE DEPARTMENT FOR FURTHER INFORMATION.
- 3.45 REFER TO LOCAL FIRE DEPARTMENT FOR FURTHER INFORMATION.
- 3.46 REFER TO LOCAL FIRE DEPARTMENT FOR FURTHER INFORMATION.
- 3.47 REFER TO LOCAL FIRE DEPARTMENT FOR FURTHER INFORMATION.
- 3.48 REFER TO LOCAL FIRE DEPARTMENT FOR FURTHER INFORMATION.
- 3.49 REFER TO LOCAL FIRE DEPARTMENT FOR FURTHER INFORMATION.
- 3.50 REFER TO LOCAL FIRE DEPARTMENT FOR FURTHER INFORMATION.
- 3.51 REFER TO LOCAL FIRE DEPARTMENT FOR FURTHER INFORMATION.
- 3.52 REFER TO LOCAL FIRE DEPARTMENT FOR FURTHER INFORMATION.
- 3.53 REFER TO LOCAL FIRE DEPARTMENT FOR FURTHER INFORMATION.
- 3.54 REFER TO LOCAL FIRE DEPARTMENT FOR FURTHER INFORMATION.
- 3.55 REFER TO LOCAL FIRE DEPARTMENT FOR FURTHER INFORMATION.
- 3.56 REFER TO LOCAL FIRE DEPARTMENT FOR FURTHER INFORMATION.
- 3.57 REFER TO LOCAL FIRE DEPARTMENT FOR FURTHER INFORMATION.
- 3.58 REFER TO LOCAL FIRE DEPARTMENT FOR FURTHER INFORMATION.
- 3.59 REFER TO LOCAL FIRE DEPARTMENT FOR FURTHER INFORMATION.
- 3.60 REFER TO LOCAL FIRE DEPARTMENT FOR FURTHER INFORMATION.
- 3.61 REFER TO LOCAL FIRE DEPARTMENT FOR FURTHER INFORMATION.
- 3.62 REFER TO LOCAL FIRE DEPARTMENT FOR FURTHER INFORMATION.
- 3.63 REFER TO LOCAL FIRE DEPARTMENT FOR FURTHER INFORMATION.
- 3.64 REFER TO LOCAL FIRE DEPARTMENT FOR FURTHER INFORMATION.
- 3.65 REFER TO LOCAL FIRE DEPARTMENT FOR FURTHER INFORMATION.
- 3.66 REFER TO LOCAL FIRE DEPARTMENT FOR FURTHER INFORMATION.
- 3.67 REFER TO LOCAL FIRE DEPARTMENT FOR FURTHER INFORMATION.
- 3.68 REFER TO LOCAL FIRE DEPARTMENT FOR FURTHER INFORMATION.
- 3.69 REFER TO LOCAL FIRE DEPARTMENT FOR FURTHER INFORMATION.
- 3.70 REFER TO LOCAL FIRE DEPARTMENT FOR FURTHER INFORMATION.
- 3.71 REFER TO LOCAL FIRE DEPARTMENT FOR FURTHER INFORMATION.
- 3.72 REFER TO LOCAL FIRE DEPARTMENT FOR FURTHER INFORMATION.
- 3.73 REFER TO LOCAL FIRE DEPARTMENT FOR FURTHER INFORMATION.
- 3.74 REFER TO LOCAL FIRE DEPARTMENT FOR FURTHER INFORMATION.
- 3.75 REFER TO LOCAL FIRE DEPARTMENT FOR FURTHER INFORMATION.
- 3.76 REFER TO LOCAL FIRE DEPARTMENT FOR FURTHER INFORMATION.
- 3.77 REFER TO LOCAL FIRE DEPARTMENT FOR FURTHER INFORMATION.
- 3.78 REFER TO LOCAL FIRE DEPARTMENT FOR FURTHER INFORMATION.
- 3.79 REFER TO LOCAL FIRE DEPARTMENT FOR FURTHER INFORMATION.
- 3.80 REFER TO LOCAL FIRE DEPARTMENT FOR FURTHER INFORMATION.
- 3.81 REFER TO LOCAL FIRE DEPARTMENT FOR FURTHER INFORMATION.
- 3.82 REFER TO LOCAL FIRE DEPARTMENT FOR FURTHER INFORMATION.
- 3.83 REFER TO LOCAL FIRE DEPARTMENT FOR FURTHER INFORMATION.
- 3.84 REFER TO LOCAL FIRE DEPARTMENT FOR FURTHER INFORMATION.
- 3.85 REFER TO LOCAL FIRE DEPARTMENT FOR FURTHER INFORMATION.
- 3.86 REFER TO LOCAL FIRE DEPARTMENT FOR FURTHER INFORMATION.
- 3.87 REFER TO LOCAL FIRE DEPARTMENT FOR FURTHER INFORMATION.
- 3.88 REFER TO LOCAL FIRE DEPARTMENT FOR FURTHER INFORMATION.
- 3.89 REFER TO LOCAL FIRE DEPARTMENT FOR FURTHER INFORMATION.
- 3.90 REFER TO LOCAL FIRE DEPARTMENT FOR FURTHER INFORMATION.
- 3.91 REFER TO LOCAL FIRE DEPARTMENT FOR FURTHER INFORMATION.
- 3.92 REFER TO LOCAL FIRE DEPARTMENT FOR FURTHER INFORMATION.
- 3.93 REFER TO LOCAL FIRE DEPARTMENT FOR FURTHER INFORMATION.
- 3.94 REFER TO LOCAL FIRE DEPARTMENT FOR FURTHER INFORMATION.
- 3.95 REFER TO LOCAL FIRE DEPARTMENT FOR FURTHER INFORMATION.
- 3.96 REFER TO LOCAL FIRE DEPARTMENT FOR FURTHER INFORMATION.
- 3.97 REFER TO LOCAL FIRE DEPARTMENT FOR FURTHER INFORMATION.
- 3.98 REFER TO LOCAL FIRE DEPARTMENT FOR FURTHER INFORMATION.
- 3.99 REFER TO LOCAL FIRE DEPARTMENT FOR FURTHER INFORMATION.
- 3.100 REFER TO LOCAL FIRE DEPARTMENT FOR FURTHER INFORMATION.



22 | SIDE ELEVATION - NORTH  
 1/4" = 1'-0"



24 | REAR ELEVATION - WEST  
 1/4" = 1'-0"