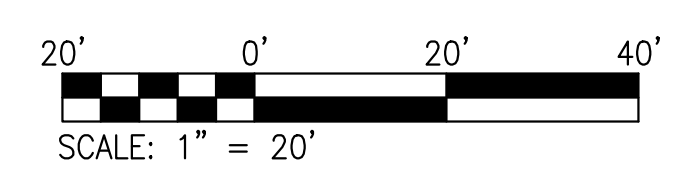
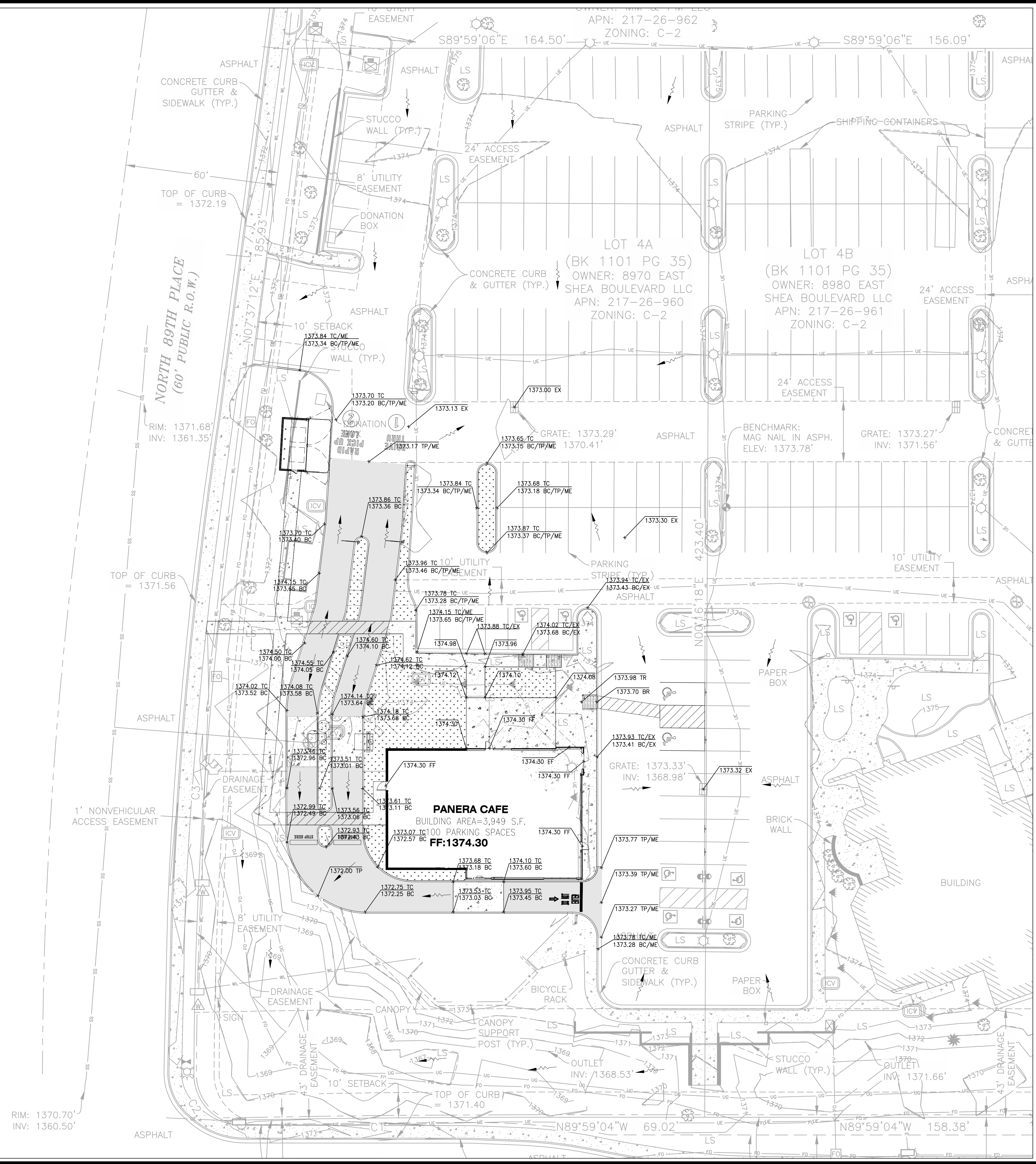


USER: Patrick Barry, TAB: C5.0
 DATE: January 28, 2022 - 9:35:24 AM
 DRAWING: S:\JOBS\2021\21-0067\CAD\C-Plan\PlotSheets\C-PAL_000A_21-0067.dwg



GRADING ABBREVIATIONS

- BC BOTTOM OF CURB
- TC TOP OF CURB
- BR BOTTOM OF RAMP
- TR TOP OF RAMP
- TP TOP OF PAVEMENT
- ME MATCH EXISTING
- FF FINISHED FLOOR
- EX EXISTING TO REMAIN

| NO | REVISION DESCRIPTION | DATE |
|----|----------------------|------|
| | | |
| | | |

DEVELOPER/OWNER:
PANERA, LLC
 3630 SOUTH GUYER ROAD, SUITE 100
 ST. LOUIS, MO 63127
 (314) 984-1000

THE PROFESSIONAL, WHOSE SIGNATURE AND PERSONAL SEAL APPEAR HEREON, HAS PREPARED THIS GRADING PLAN FOR THE PROJECT DESCRIBED ABOVE. THIS PLAN IS A PRELIMINARY DESIGN AND IS SUBJECT TO CHANGE WITHOUT NOTICE. THE PROFESSIONAL DOES NOT WARRANT THAT THE INFORMATION PROVIDED HEREON IS COMPLETELY ACCURATE OR THAT THE INFORMATION PROVIDED HEREON IS FREE FROM ERRORS. THE PROFESSIONAL IS NOT RESPONSIBLE FOR ANY ERRORS OR OMISSIONS IN THIS PLAN OR FOR ANY DAMAGE TO PERSONS OR PROPERTY ARISING FROM THE USE OF THIS PLAN. THE PROFESSIONAL'S LIABILITY IS LIMITED TO THE PROFESSIONAL FEES RECEIVED FOR THIS PROJECT.

PANERA BAKERY CAFE #6263

8970 E SHEA BLVD.
 SCOTTSDALE, AZ 85260

ST. LOUIS
 601 S. 18th Street
 St. Louis, MO 63103
 314.984.9887 ext
 www.colestl.com

COLE
 CIVIL ENGINEERING / SURVEYING / PLANNING / LANDSCAPE ARCHITECTURE
 Call for information on all services provided by Cole Design Group, Inc. in Missouri & Texas. Licenses required for all "Cole" work.

| | |
|----------------|------------|
| DESIGN/CALC BY | PGB |
| DRAWN BY | PGB |
| CHECKED BY | CAW |
| DRAWING SCALE | AS SHOWN |
| DATE | 01/28/2022 |
| Job Number | 21-0067 |
| Sheet Number | C5.0 |