

**GENERAL NOTES:**

- A. SITE PLAN PROVIDED FOR REFERENCE, REFER TO CIVIL DOCUMENTS FOR ADDITIONAL INFORMATION.
- B. LANDSCAPE HAS BEEN INTENTIONALLY EXCLUDED FROM THIS SHEET, SEE CIVIL DRAWINGS FOR ALL LANDSCAPE INFORMATION AND REQUIREMENTS.
- C. ALL WORK SHALL COMPLY WITH THE REGULATION AND ORDINANCES OF SCOTTSDALE, AZ AND ANY OTHER APPLICABLE CODES.
- D. THE GENERAL CONTRACTOR (G.C.) SHALL CONTACT LOCAL UTILITIES TO VERIFY ALL SIZES, LOCATIONS, AND CONNECTION POINTS FOR ALL UTILITIES AFFECTED.
- E. ANY CONNECTIONS, DISCONNECTIONS, AND INSTALLATIONS TO LOCAL UTILITIES SHALL BE MADE IN ACCORDANCE WITH APPLICABLE CODES.
- F. EXTERIOR BUILDING SIGN FURNISHED AND INSTALLED BY OWNER'S SIGN VENDOR, G.C. TO PROVIDE POWER.
- G. G.C. TO VERIFY EXISTING SITE CONDITIONS PRIOR TO BID. ALSO PROVIDE CONTINUOUS CURB CUTS AND SMOOTH PAVEMENT & CURB TRANSITIONS BETWEEN NEW AND EXISTING CONDITIONS AS REQUIRED FOR SITE WORK AS REQUIRED.
- H. G.C. SHALL PROVIDE AND INSTALL ELECTRICAL CONDUIT AND STRUCTURAL FOOTINGS FOR ALL NEW SITE DRIVE-THRU SIGNAGE (TYPICAL).
- I. REFER TO CIVIL DOCUMENTS FOR GENERAL SITE LIGHTING.

**KEYED NOTES**

- 0.02 DRIVE THRU LANE, INSTALLED BY PANERA. REFER TO CIVIL DRAWINGS.
- 0.03 ASPHALT PAVING; REFER TO CIVIL DRAWINGS FOR ADDITIONAL INFORMATION.
- 0.05 PROPOSED TRASH ENCLOSURE AND CONCRETE PAD BY PANERA; EXTERIOR MATERIALS TO MATCH MAIN BUILDING. REFER TO SHEET A020.
- 0.06 PRIMARY TENANT BUILDING ENTRANCE.
- 0.08 SECONDARY ENTRANCE, REFER TO SHEET A101 FOR FURTHER INFORMATION.
- 0.09 G.C. TO PROVIDE MAXIMUM THRESHOLD HEIGHT OF 1/2"
- 0.10 DRIVE-THRU CONCRETE PAD, PROVIDED BY PANERA; REFER TO CIVIL DRAWINGS AND SHEET A021 FOR ADDITIONAL INFORMATION.
- 0.11 CONCRETE PATIO PROVIDED BY PANERA; REFER TO SHEET A040 FOR ADDITIONAL INFORMATION. CORRDINATE WITH TENANT DRAWINGS FOR UNDERGROUND CONDUIT(S) FOR PATIO LIGHTING.
- 0.12 PROPOSED CONCRETE SIDEWALK BY PANERA, PROVIDE BROOM FINISH PERPENDICULAR TO BUILDING, TYPICAL. REFER TO CIVIL DRAWINGS FOR ADDITIONAL INFORMATION.
- 0.13 ACCESSIBLE RAMP, PROVIDED BY PANERA; REFER TO CIVIL DRAWINGS FOR ADDITIONAL INFORMATION AND DETAILS.
- 0.14 PROPOSED LANDSCAPE AREA; REFER TO LANDSCAPE DRAWINGS FOR ADDITIONAL INFORMATION TO UTILIZE LOCAL FLORA.
- 0.15 PROPOSED FIRE DEPARTMENT CONNECTION, INSTALLED BY SHELL GC.
- 0.16 4" CONCRETE PIPE BOLLARD, REFER TO 13/A040, INSTALLED BY PANERA.
- 0.17 6" CONCRETE PIPE BOLLARD, REFER TO 14/A040, INSTALLED BY PANERA.
- 0.18 NEW DRIVE THRU SIGNAGE; SEE SHEET A023 FOR FURTHER INFORMATION. ALSO SEE SHOP DRAWINGS.
- 0.19 PROPOSED GREASE INTERCEPTOR LOCATION; REFER TO CIVIL AND PLUMBING DRAWINGS FOR ADDITIONAL INFORMATION. INSTALLED BY PANERA.
- 0.21 PROPOSED ACCESSIBLE PARKING STALL; REFER TO CIVIL DRAWINGS FOR ADDITIONAL INFORMATION.
- 0.22 BOLLARD MOUNTED ACCESSIBLE SIGNAGE, INSTALLED BY PANERA; REFER TO 18/A040 FOR FURTHER REFERENCE.
- 0.23 PROPOSED PAINTED STRIPED CROSS WALK; REFER TO CIVIL DRAWINGS FOR ADDITIONAL INFORMATION.
- 0.24 PROPOSED RAPID PICK-UP PARKING LOCATIONS AND BOLLARD MOUNTED SIGNAGE; REFER TO 22/A040 & VENDORS SHOP DRAWINGS FOR SIGNAGE INFORMATION.
- 0.26 PARKING STRIPING; REFER TO CIVIL DRAWINGS FOR ADDITIONAL INFORMATION.
- 0.27 PROPOSED DIRECTIONAL PAVEMENT PAINTING; REFER TO CIVIL DRAWINGS FOR ADDITIONAL INFORMATION.
- 0.29 PROPOSED PANERA MONUMENT SIGN-CONSTRUCTED BY PANERA; TENANT SIGN PANEL BY SIGNAGE VENDOR COMPANY.
- 0.30 PATIO POURED CONC. RETAINING WALL. REFER TO 23/A040.
- 0.31 WOOD TRELLIS STRUCTURE, PROVIDED/INSTALLED BY PANERA GC. CONCRETE SERVICE SIDEWALK; SEE CIVIL DRAWINGS FOR FURTHER INFORMATION.
- 0.39 PROPOSED DRIVE THRU / RPU PAVEMENT MARKING CENTERED IN LANE, INSTALLED BY PANERA, COORDINATE LOCATION WITH CPM FOR PLACEMENT.
- 0.40 PROPOSED RAPID PICK UP DRIVE LANE, REFER TO CIVIL FOR FURTHER INFORMATION.
- 0.41 DRIVE THRU PULL FORWARD SPACE AND SIGNAGE, REFER TO 18/A040.
- 0.42 CONCRETE CURB, REFER TO CIVIL FOR FURTHER INFORMATION.
- 0.46 10" WIDE CURB ALONG DRIVE THRU WALL, REFER TO SECTION FOR FURTHER INFORMATION.
- 0.49 PANERA GC TO PROVIDE CONSTRUCTION BARRICADE BANNER SIGN DETAIL, REFER TO 8/A001 FOR DETAIL. VERIFY PLACEMENT ON SITE WITH PANERA CPM.

Professional Seal:

Project Title:

**Bakery Cafe6263**  
8970 E. SHEA BLVD  
SCOTTSDALE, AZ 85260



Consultant Copyright Placeholder

No.	Description	Date

**ARCHITECTURAL SITE PLAN**

Project Number: \_\_\_\_\_ Sheet Number: \_\_\_\_\_

210744

Drawn By: \_\_\_\_\_

CAO, MH

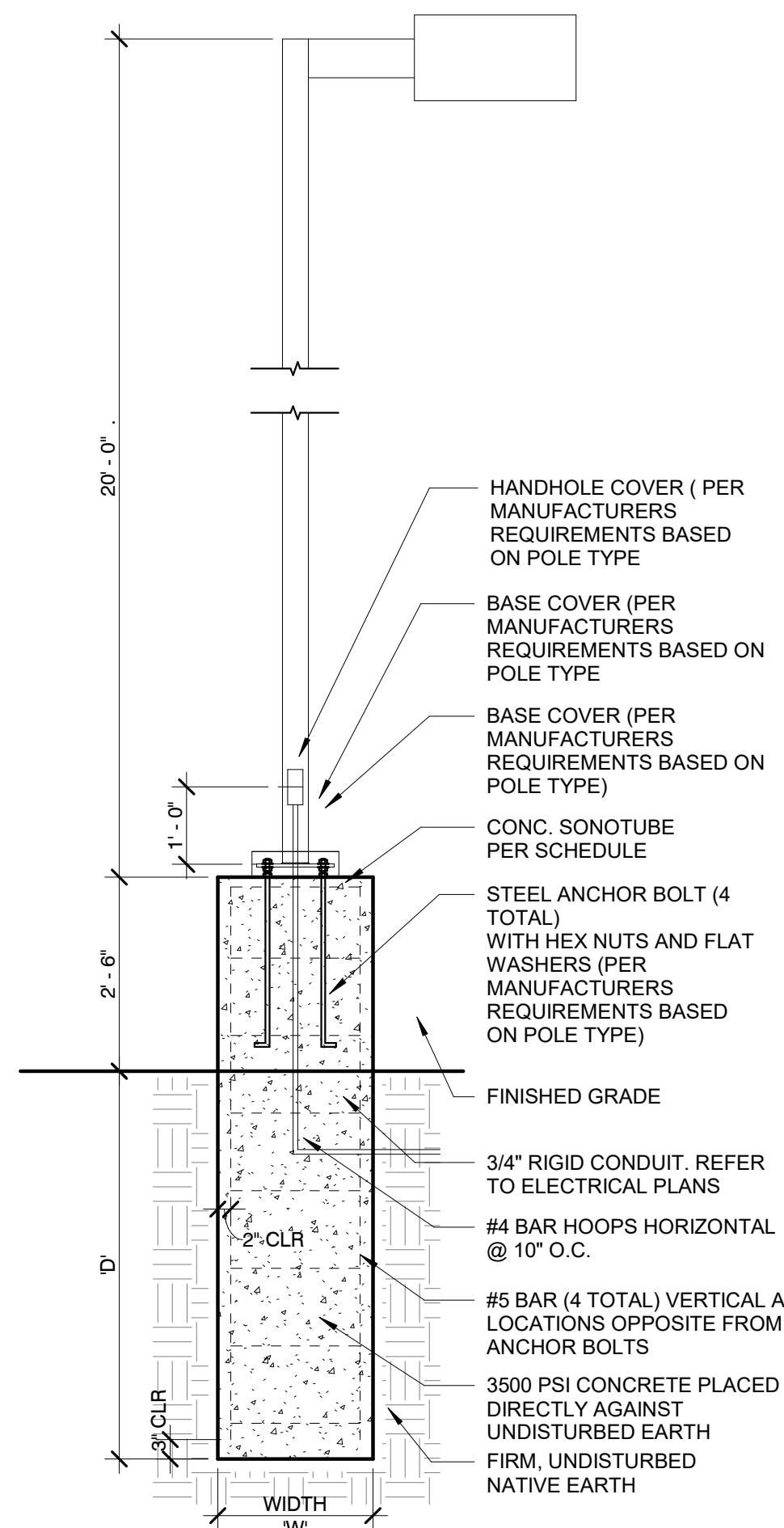
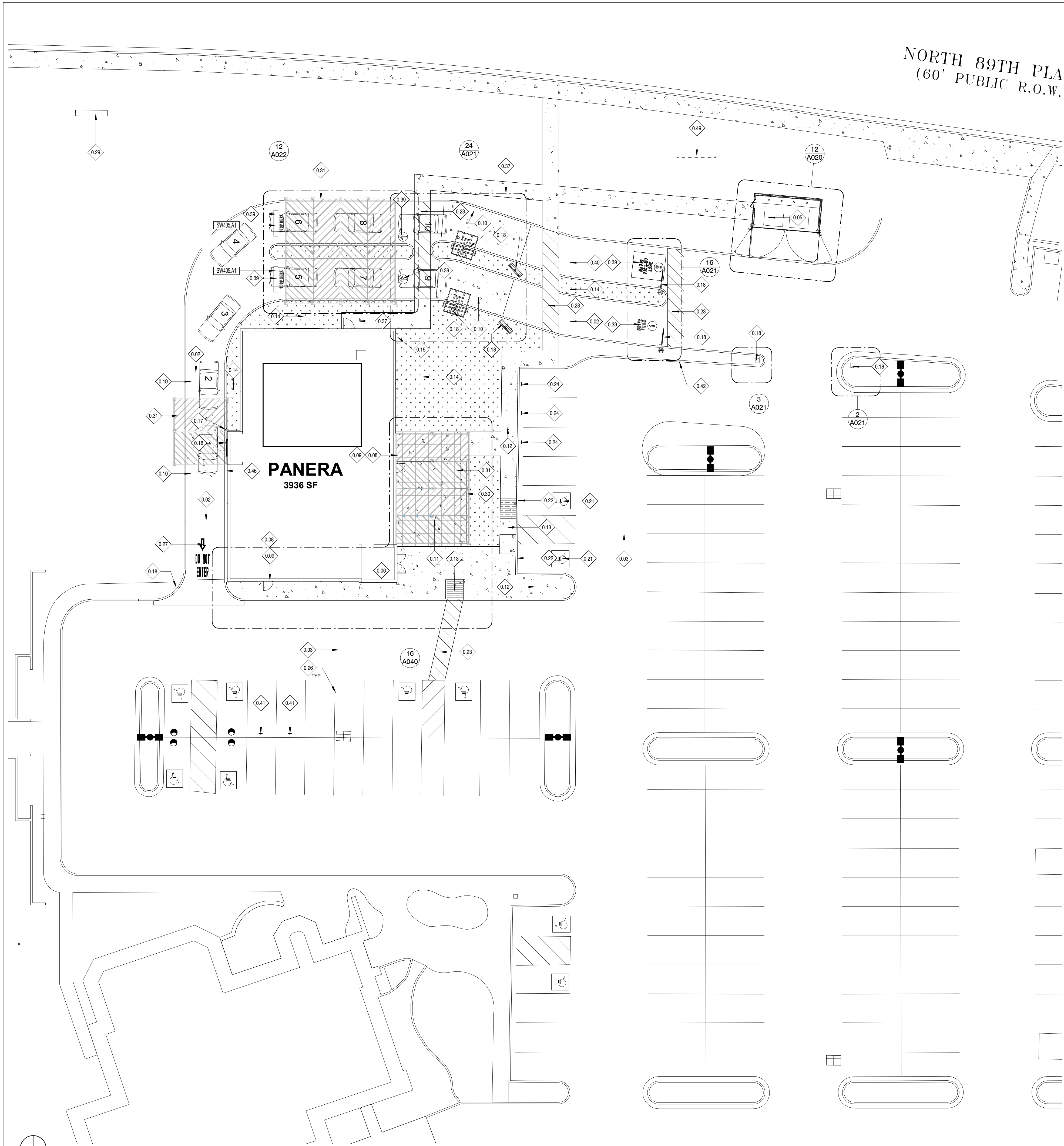
Issue Date: \_\_\_\_\_

22-0217

DPM: \_\_\_\_\_ DM: \_\_\_\_\_ CPM: \_\_\_\_\_

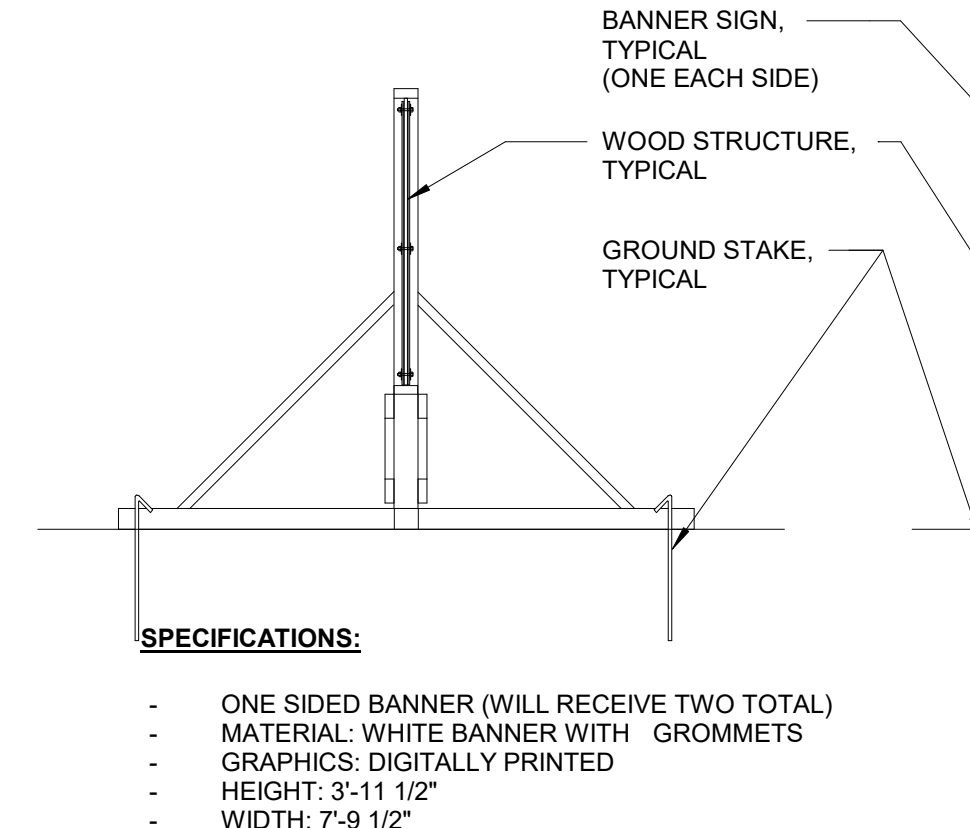
JUSTIN K. IAN O. JAVIER

**A001**



FOOTING DIA., 'W'	FTG DEPTH, 'D'	VERT REINF.
18"	4'-9"	#3 @ 8"   3 IN TOP 5'
24"	4'-3"	#3 @ 8"   3 IN TOP 5'
30"	4'-0"	#3 @ 8"   3 IN TOP 5'
36"	3'-9"	#3 @ 8"   3 IN TOP 5'

**7 | SITE LIGHT DETAIL**  
1/2" = 1'-0"



**8 | CONSTRUCTION BARRICADE BANNER SIGN DETAIL**  
3/8" = 1'-0"

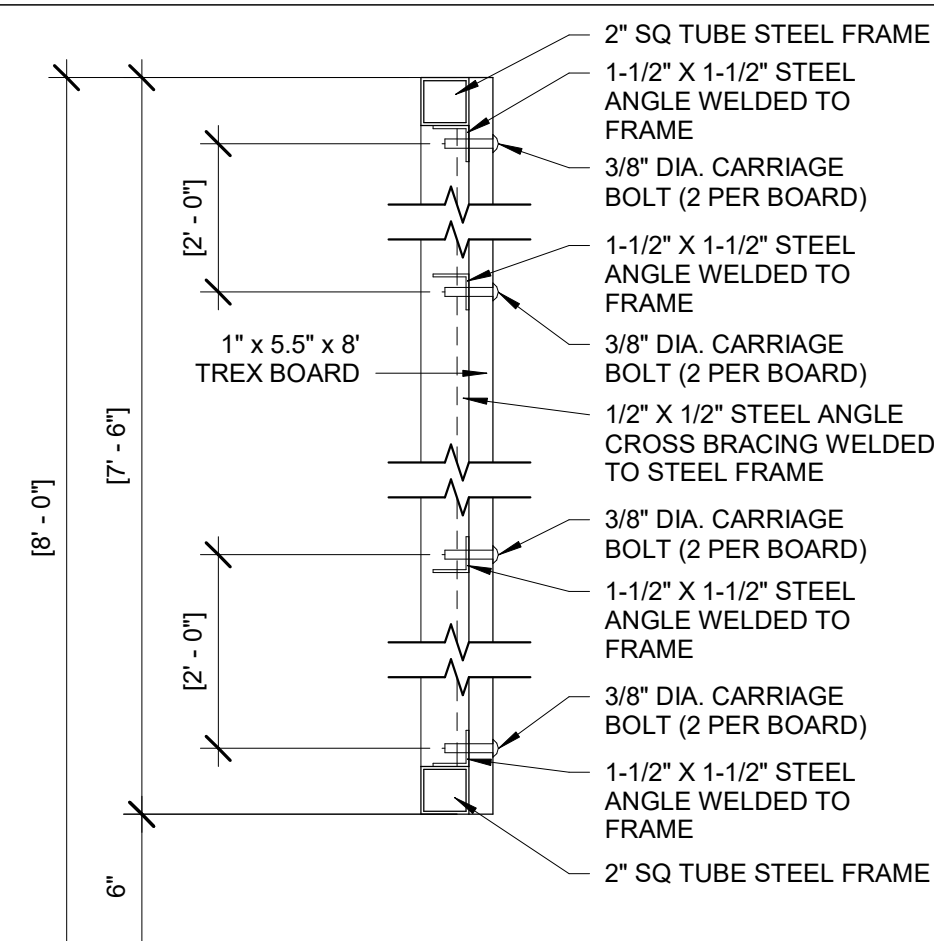


2/4/2022 10:08:40 AM

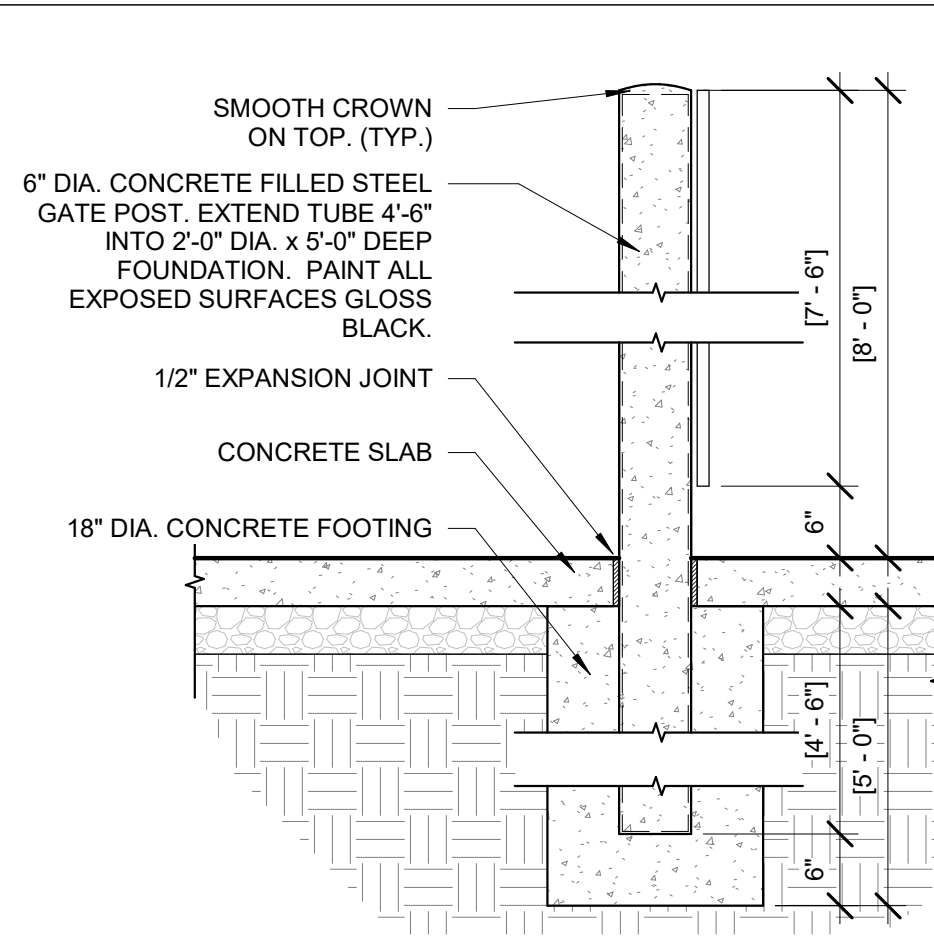
PG 2015.01

**24 | SITE PLAN**  
1/16" = 1'-0"

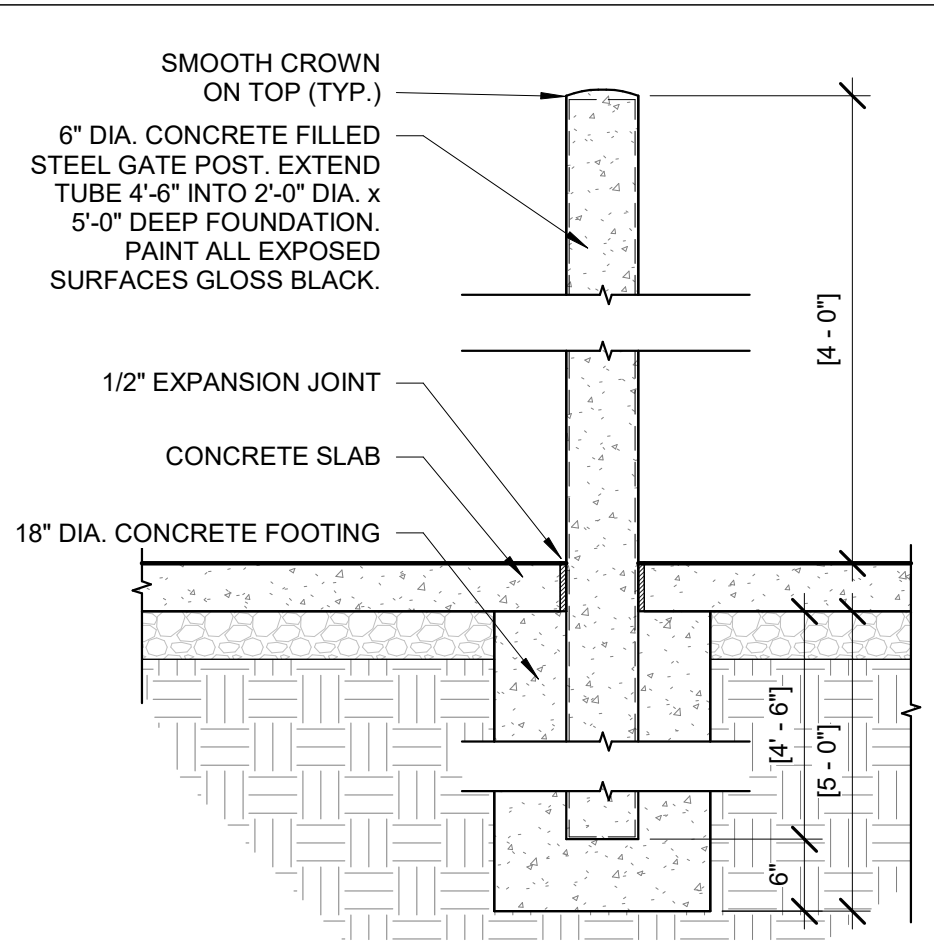
**8 | CONSTRUCTION BARRICADE BANNER SIGN DETAIL**  
3/8" = 1'-0"



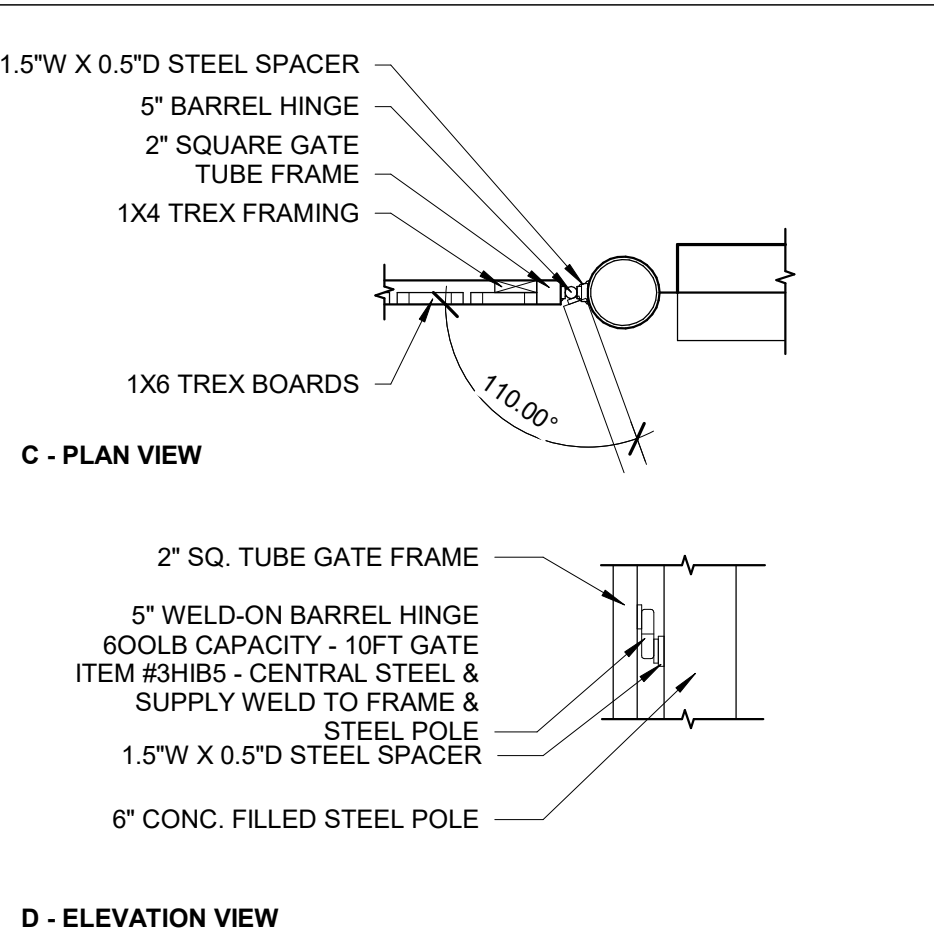
17 DETAIL @ TRASH GATE FRAMING  
1 1/2" = 1'-0"



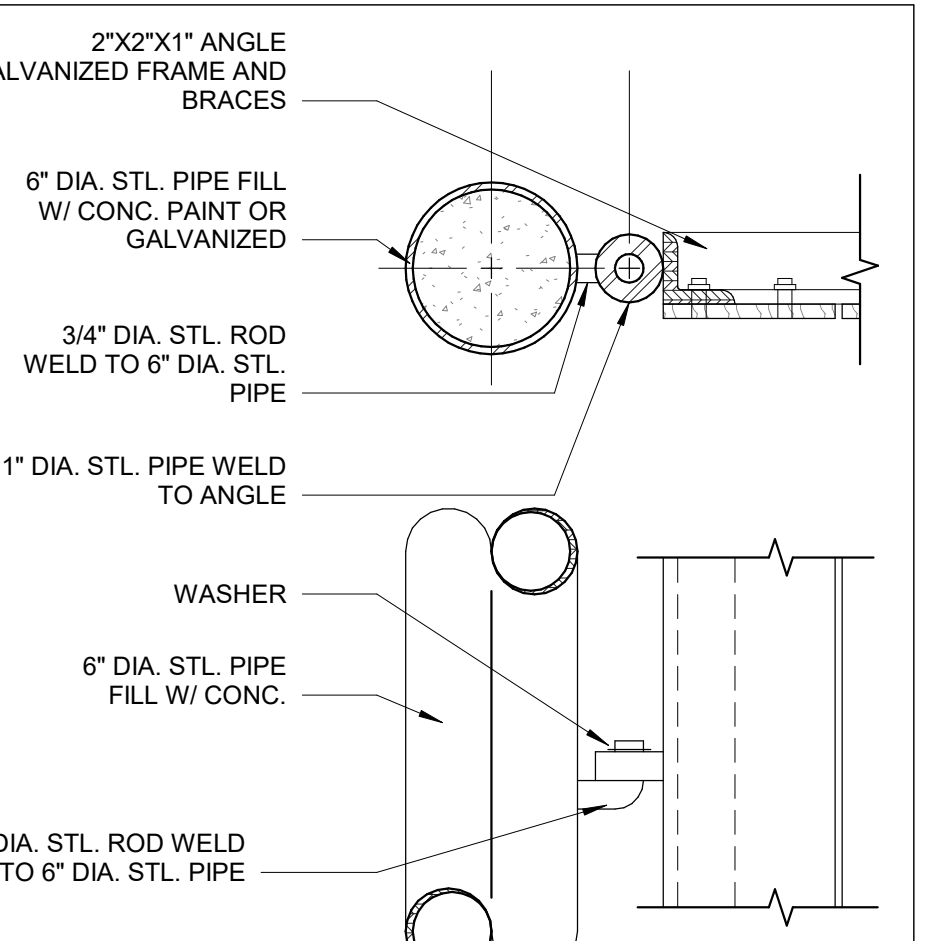
13 GATE POST DETAIL  
3/4" = 1'-0"



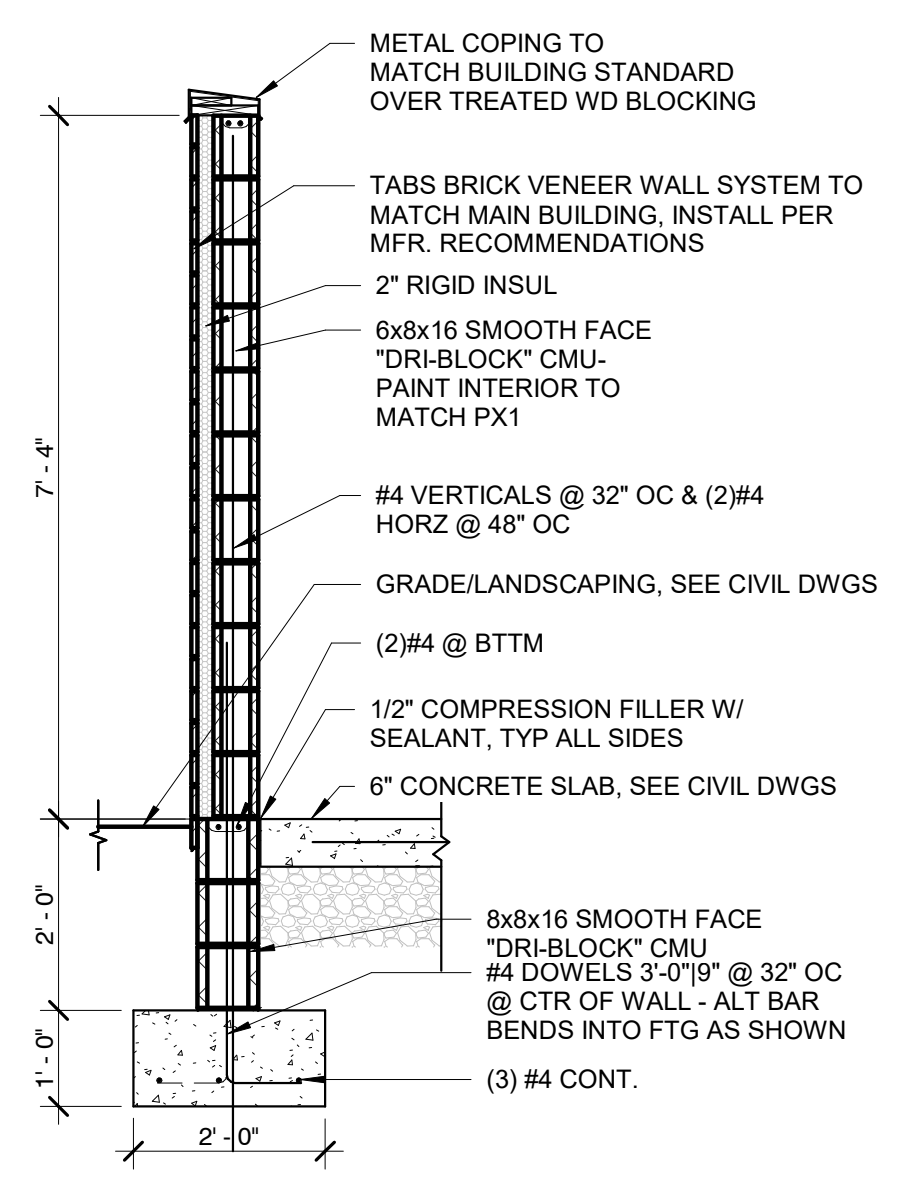
9 DUMPSTER BOLLARD DETAIL  
3/4" = 1'-0"



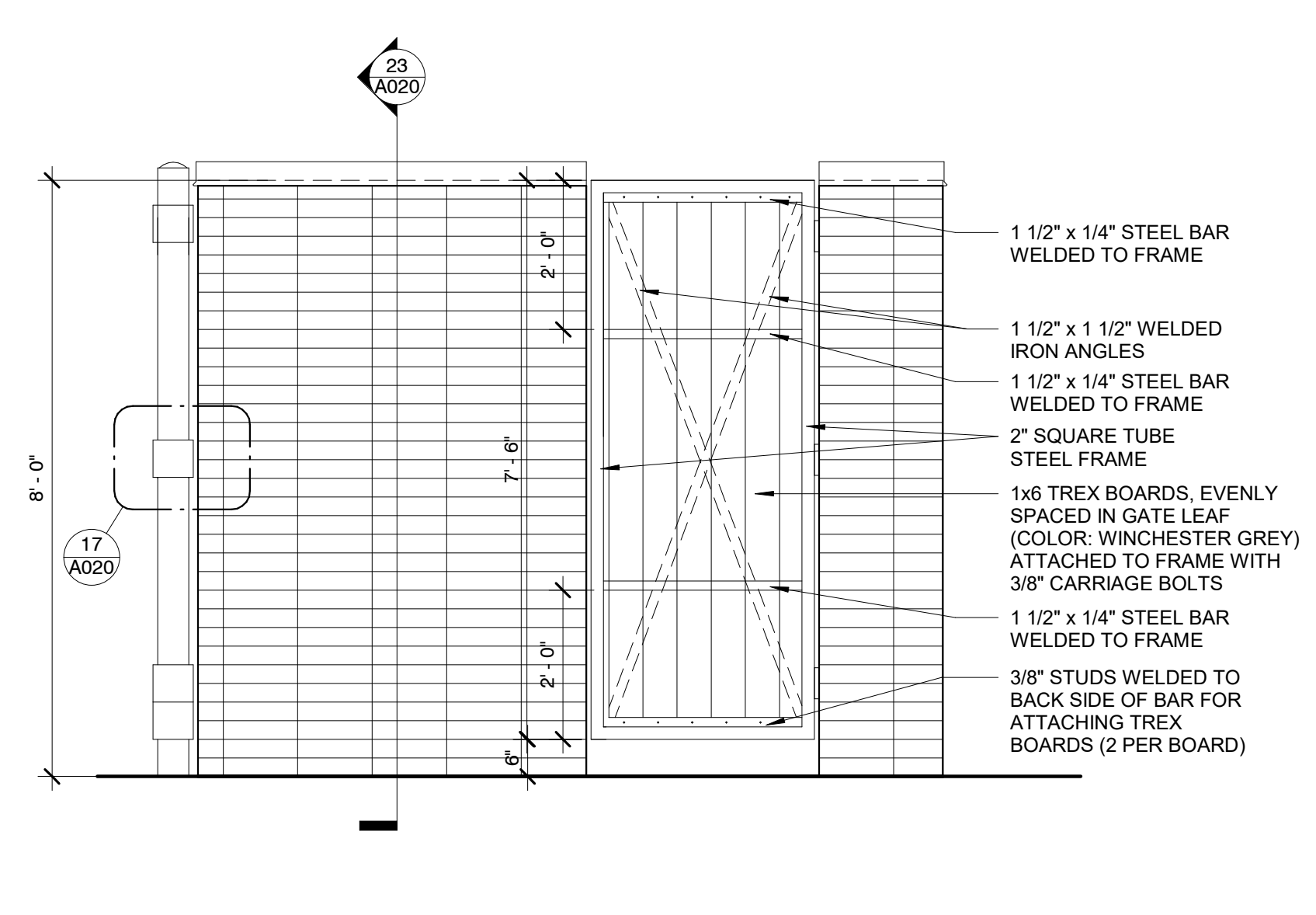
5 DTL @ TRASH ENCLOS GATE HINGE  
3/4" = 1'-0"



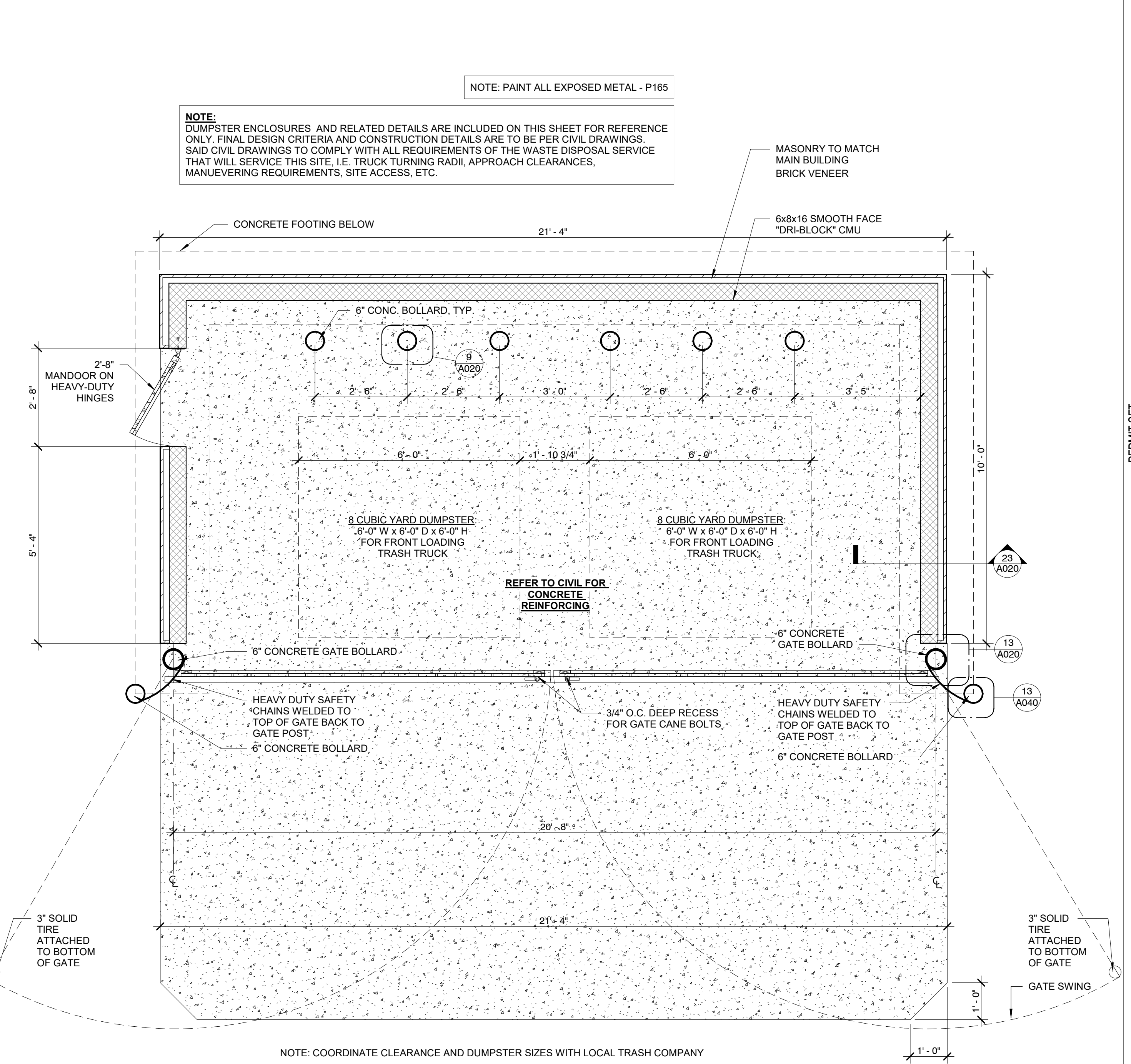
1 TRASH ENCLOSURE DETAIL  
1 1/2" = 1'-0"



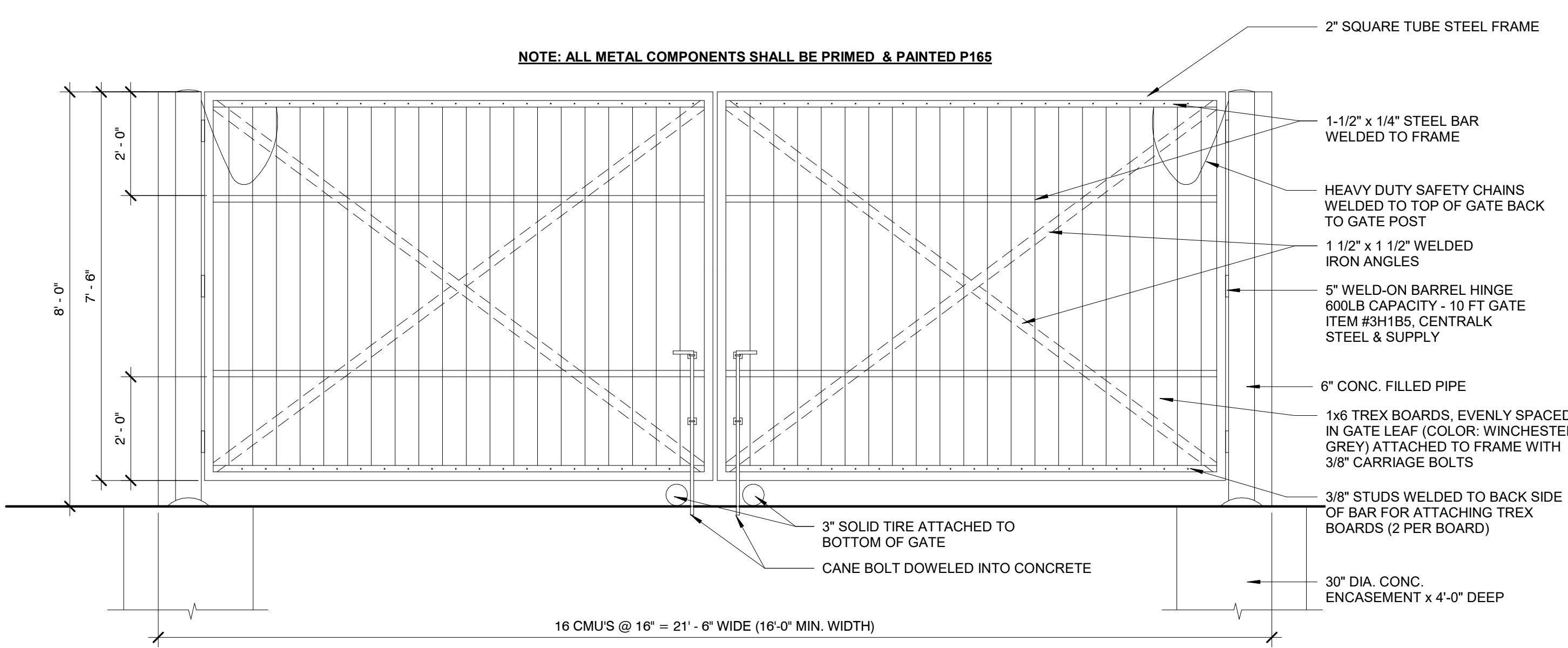
23 TRASH & RECYCLE ENCLOSURE  
1/2" = 1'-0"



19 TRASH & RECYCLING ENCLOSURE SIDE  
1/2" = 1'-0"



12 PLAN @ TRASH & RECYCLE ENCLOSURE FOR FRONT LOADING TRUCK  
1/2" = 1'-0"



24 TRASH & RECYCLE ENCLOSURE ELEVATION FOR FRONT LOADING TRUCK  
1/2" = 1'-0"

Bakery-Cafe:  
**6263**  
SYSTEM: NEXT GEN  
Project Team:  
**FREDERICK J. GOGLIA**  
ARCHITECT, N.CARB. RD1  
1991 CRAIG ROAD, SUITE 300, ST. LOUIS, MO 63146  
PH (314) 415-2400 FAX (314) 415-2300 www.arci.com

Professional Seal:

Project Title:

PERMIT SET  
**Bakery Cafe6263**  
8970 E. SHEA BLVD  
SCOTTSDALE, AZ 85260



Consultant Copyright Placeholder

No.	Description	Date

**TRASH ENCLOSURE DETAILS**

Project Number: 210744  
Sheet Number: **A020**  
Drawn By: CAO, MH  
Issue Date: 22-02-17  
DPM: JUSTIN K. DM: IAN O. CPM: JAVIER

2/4/2022 10:07:13 AM

PG 2015.01