



1955 S Val Vista Dr., Ste 121  
 Phoenix, AZ 85024  
 PH: (480) 223-8573  
 landcorconsulting.com



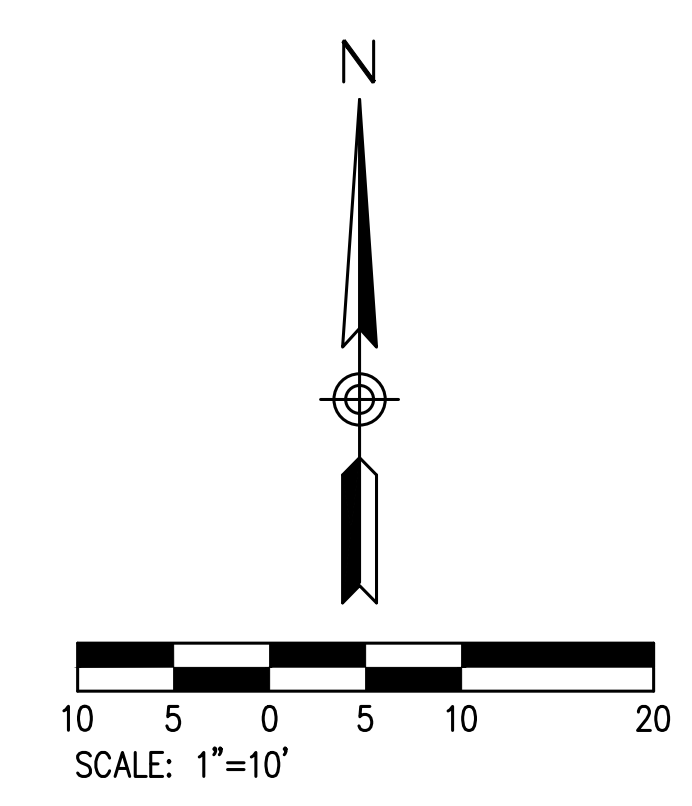
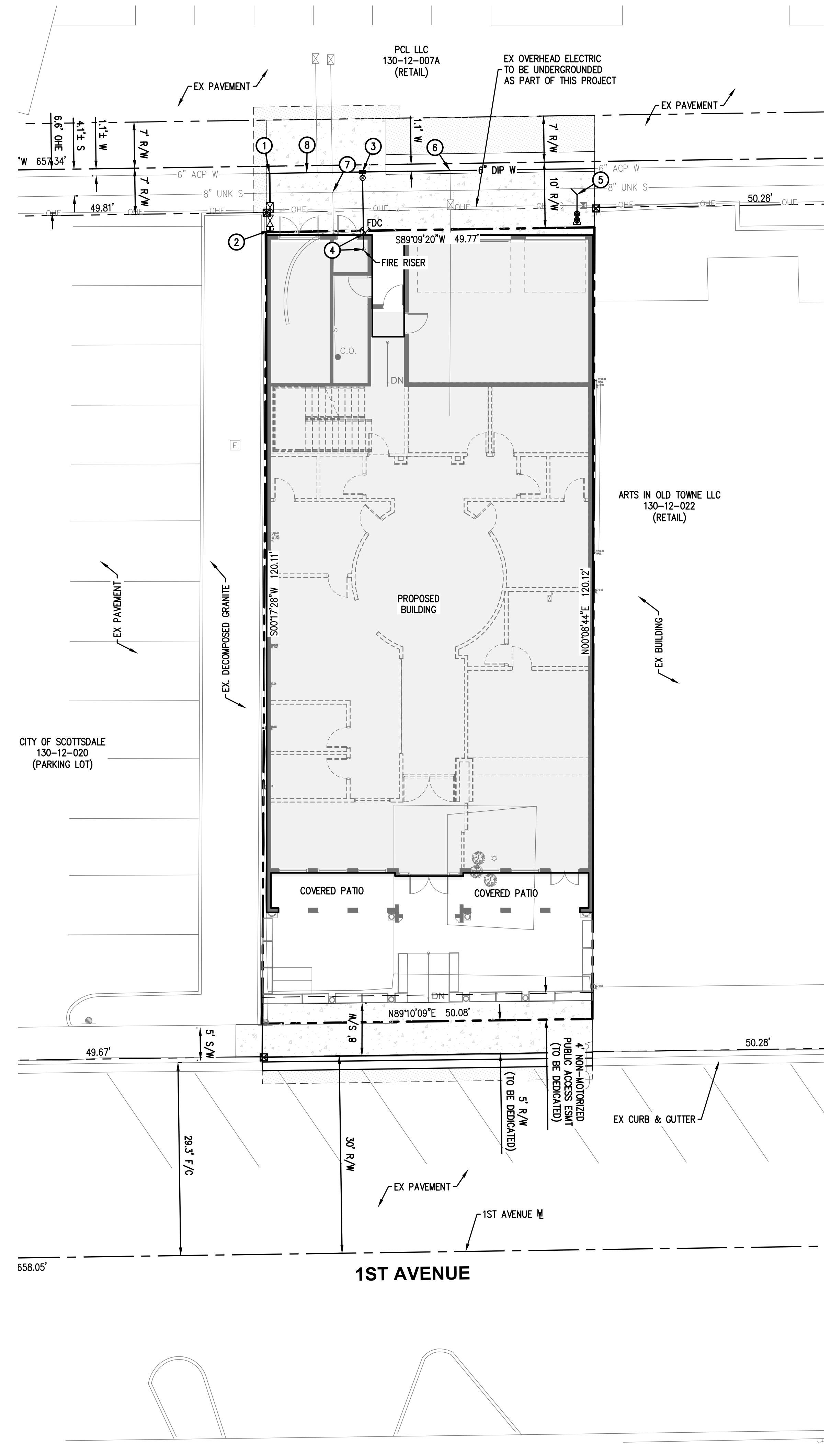
**VIVA ANANDA**  
**PRELIMINARY UTILITY PLAN**  
 7140 E FIRST AVENUE  
 SCOTTSDALE, ARIZONA 85251

**CONSTRUCTION NOTES**

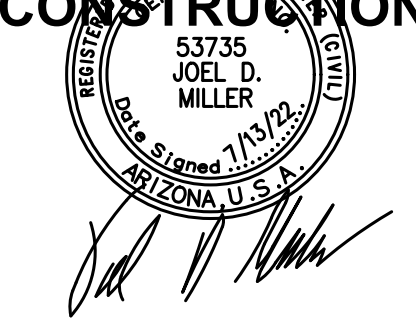
1. INSTALL 2.5" WATER SERVICE LINE CONNECTION WITH REDUCED PRESSURE PRINCIPLE BACKFLOW PREVENTION ASSEMBLY PER C.O.S. STD. DTL. 2330 & 2354. BACKFLOW PREVENTER SHALL BE IN A CAGE.
2. INSTALL 2.5" DOMESTIC WATER LINE CONNECT TO BUILDING PLUMBING AT 1' FROM FACE OF BUILDING. SEE PLUMBING PLAN FOR CONTINUATION.
3. INSTALL 6" FIRE LINE CONNECTION PER C.O.S. STD. DTL. 2362-2 WITH 6" TEE & VALVE PER M.A.G. STD. DTL. 391-1, TYPE 'C'.
4. CONNECT FIRE LINE TO FIRE RISER PER NFPA 24. INSTALL FIRE SPRINKLER RISER WITH WALLMOUNT FDC CONNECTION PER C.O.S. STD. DTL. 2369.
5. INSTALL NEW 4" SEWER SERVICE PER M.A.G. STD. DTL. 440-2, TYPE 'B'. CONNECT TO BUILDING PLUMBING AT 1' FROM FACE OF BUILDING. SEE PLUMBING PLANS FOR CONTINUATION.
6. EXISTING 8" WATER SERVICE, TO BE ABANDONED.
7. EXISTING SEWER SERVICE, TO BE ABANDONED.
8. REMOVE AND REPLACE EXISTING 6" ACP WATER LINE WITH 6" D.I.P. (CLASS 350), POLYETHYLENE WRAPPED PER C.O.S. SUPPLEMENT TO M.A.G. SPEC 610.6.1. LENGTH=50LF.

**NOTES:**

1. CONTRACTOR TO POTHOLE AND VERIFY DEPTH AND LOCATION OF EXISTING UTILITIES SHOWN ON THIS PLAN PRIOR TO CONSTRUCTION. NOTIFY ENGINEER OF ANY CONFLICTS.
2. PROVIDE UNDERGROUND LOCATING DEVICE, SUCH AS LOCATER TAPE OR WIRE, WHEN USING NONMETALLIC PIPING FOR PLUMBING SYSTEMS ONSITE (ARS 40-360.2.2).
3. MAINTAIN 1' MINIMUM CLEARANCE FROM EXISTING UNDERGROUND UTILITIES.



**PRELIMINARY  
 NOT FOR  
 CONSTRUCTION**



DATE:	
REVISIONS:	
PRELIMINARY UTILITY PLAN	
DATE: 7/13/22	
PROJ. #: 1964	
<b>C2.1</b>	
1 OF 1	