

**PUBLIC WATER MAIN NOTES**

- 1 INSTALL 8" CLASS 350 DIP WATER MAIN POLYWRAPPED, LENGTH PER PLAN, MINIMUM 3' COVER. BEDDING AND BACKFILL PER COS STD DET 2201.
- 2 INSTALL 8"x6" TEE WITH RESTRAINED JOINTS PER MAG STD DET 303.
- 3 INSTALL 8" BEND WITH RESTRAINED JOINTS PER MAG STD DET 303.
- 4 INSTALL FIRE HYDRANT ASSEMBLY WITH VALVE PER MAG STD DET 360.
- 14 INSTALL 6" CLASS 350 DIP WATER MAIN POLYWRAPPED WITH TRACER WIRE, LENGTH PER PLAN, MINIMUM 3' COVER. BEDDING AND BACKFILL PER COS STD DET 2201.
- 15 INSTALL 2" TYPE K SOFT COPPER WATER SERVICE LINE CONNECTION WITH 2" METER PER COS STD DET 2330.

**PRIVATE SEWER NOTES**

- 1 INSTALL 8" SDR-35 PVC PRIVATE SEWER MAIN.
- 2 INSTALL 6" SDR-35 PVC PRIVATE SEWER SERVICE.
- 3 INSTALL 48" SEWER MANHOLE PER MAG STD DET 420-2, INVERTS PER PLAN.
- 4 CONNECT TO BUILDING SEWER AT TWO WAY CLEANOUT. REF MEP PLANS FOR CONTINUATION.
- 5 SEWER CLEANOUT PER MAG STD DET 441.
- 6 INSTALL WYE CONNECTION, INVERT PER PLAN.

**PRIVATE FIRELINE NOTES**

- 1 INSTALL 6" CLASS 350 DIP FIRELINE POLYWRAPPED WITH TRACER WIRE, LENGTH PER PLAN, MINIMUM 3' COVER. BEDDING AND BACKFILL PER COS STD DET 2201.
- 3 BUILDING FIRELINE CONNECTION. INSTALL RISER AND BACKFLOW PREVENTOR PER COS STD DET 2369 IN FIRE RISER ROOM. REF FIRE SPRINKLER PLANS FOR CONTINUATION.
- 4 INSTALL 6" BEND WITH RESTRAINED JOINTS PER MAG STD DET 303.

**PRIVATE WATER NOTES**

- 1 BUILDING DOMESTIC WATER CONNECTION, REF MEP PLANS FOR CONTINUATION.
- 2 INSTALL 3" SCH 40 PVC DOMESTIC WATER SERVICE.
- 3 INSTALL 2" REDUCED PRESSURE BACKFLOW PREVENTION ASSEMBLY PER COS STD DET 2354.

**CIVIL ENGINEER**

KIMLEY-HORN AND ASSOCIATES, INC.  
7740 N. 16TH STREET  
SUITE 300  
PHOENIX, AZ 85020  
PH: (602) 944-5500  
CONTACT: GARRETT FRAME, PE

**DEVELOPER/OWNER**

THE DINERSTEIN COMPANY  
1010 S. COAST HIGHWAY 101, STE 106  
ENCINITAS, CA 92024

**LAND SURVEYOR**

SURVEY INNOVATION GROUP, INC  
22425 N. 16TH STREET, SUITE 1  
PHOENIX, ARIZONA 85024  
PH: (480) 922-0780  
CONTACT: MICHAEL A. BANTA, RLS

**ARCHITECT**

KTGY ARCHITECTURE + PLANNING  
17911 VON KARMAN AVE, STE 200  
IRVINE, CA 92614  
PH: (949) 851-2133

**FLOOD INFORMATION**

ACCORDING TO THE FLOOD INSURANCE RATE MAP #04013C1320 L, DATED 10/16/2013, THIS PROPERTY IS LOCATED IN FLOOD ZONE "AO" IS DEFINED AS AREAS WITH BASE FLOOD ELEVATION OR DEPTH. (DEPTH1 FEET)(VEL 3 FEET/SECOND)

PENDING LOMR APPROVAL THIS PROPERTY WILL BE LOCATED IN FLOOD ZONE "X" IS DEFINED AS AREAS OF 0.2% ANNUAL CHANCE FLOOD HAZARD, AREAS OF 1% ANNUAL CHANCE FLOOD WITH AVERAGE DEPTH LESS THAN ONE FOOT OR WITH DRAINAGE AREAS OF LESS THAN ONE SQUARE MILE.

**BASIS OF BEARING**

PER SURVEY INNOVATION GROUP, THE BASIS OF BEARING IS THE SOUTH LINE OF THE SOUTHEAST QUARTER OF SECTION 26, TOWNSHIP 4 NORTH, RANGE 4 EAST OF THE GLA AND SALT RIVER BASE AND MERIDIAN, MARICOPA COUNTY, ARIZONA, AS SHOWN IN BOOK 693, PAGE 3 MARICOPA COUNTY RECORDS.

SAID LINE BEARS SOUTH 89 DEGREES 58 MINUTES 20 SECONDS EAST.

**NOTES**

1. ADD 1500' TO ALL ELEVATIONS.
2. ALL ELEVATIONS ARE INVERT ELEVATIONS, UNLESS OTHERWISE NOTED.
3. SEE HEREON FOR LEGEND.
4. ALL PIPE CROSSING INFORMATION IS PRELIMINARY AND SUBJECT TO CHANGE DURING FINAL DESIGN.
5. STATIONS AND OFFSETS ARE BASED ON MILLER ROAD CENTERLINE.

**BENCHMARK**

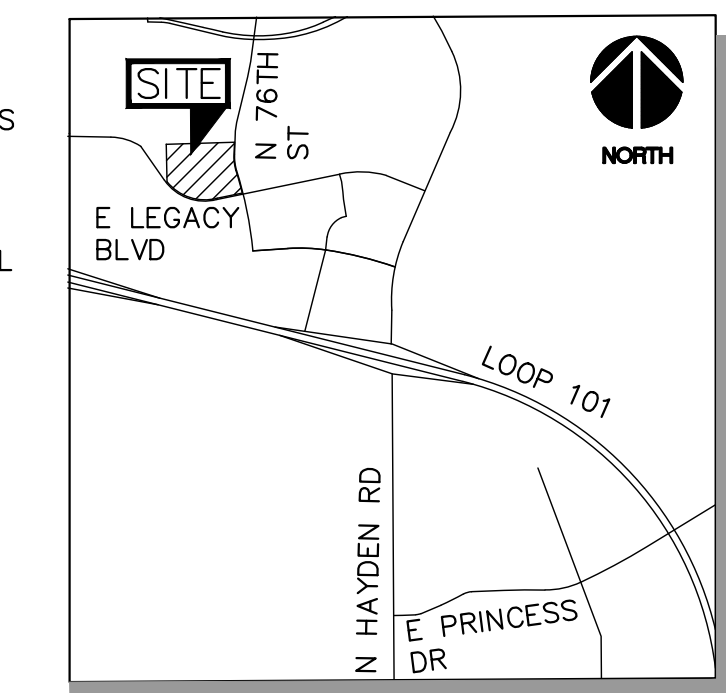
PER SURVEY INNOVATION GROUP, THE BENCHMARK IS:  
FOUND 2 1/2" STEEL PIPE 0.15' UP WITH 3 1/4" BLM BRASS CAP STAMPED "T4N R4E 1/4 S26 S35 1995"

ELEVATION = 1598.718 (NAVD88)

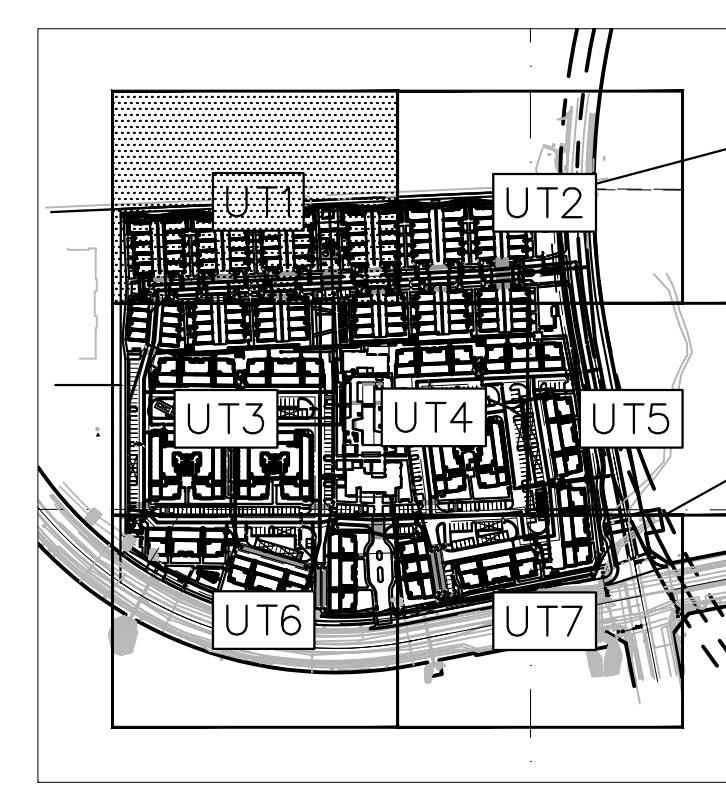
**LEGEND**

---	PROPERTY LINE	— S —	PROPOSED SEWER MAIN
---	RIGHT OF WAY LINE	— F —	PROPOSED FIRE LINE
---	STREET CENTERLINE	— DW —	PROPOSED DOMESTIC WATER LINE
---	EASEMENT LINE	⊗	EXISTING FIRE HYDRANT
---	EXISTING SANITARY SEWER MAIN	⊗	PROPOSED FIRE HYDRANT
---	EXISTING PUBLIC WATER MAIN	⊗	PROPOSED FIRE DEPARTMENT CONNECTION
---	EXISTING CABLE TV LINE	⊗	PROPOSED CATCH BASIN
---	EXISTING ELECTRIC LINE	⊗	EXISTING SANITARY SEWER MANHOLE
---	EXISTING STORM DRAIN	⊗	PROPOSED SANITARY SEWER MANHOLE
---	PROPOSED STORM DRAIN	⊗	
---	PROPOSED WATER MAIN	⊗	

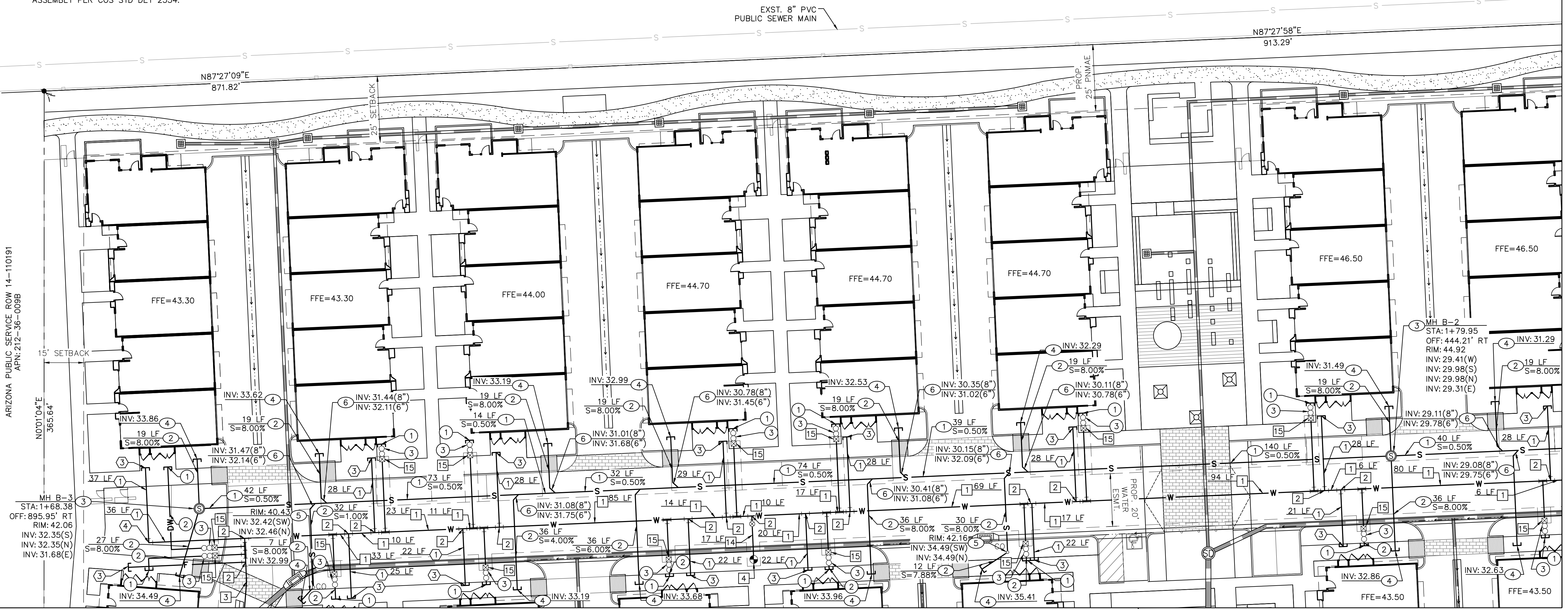
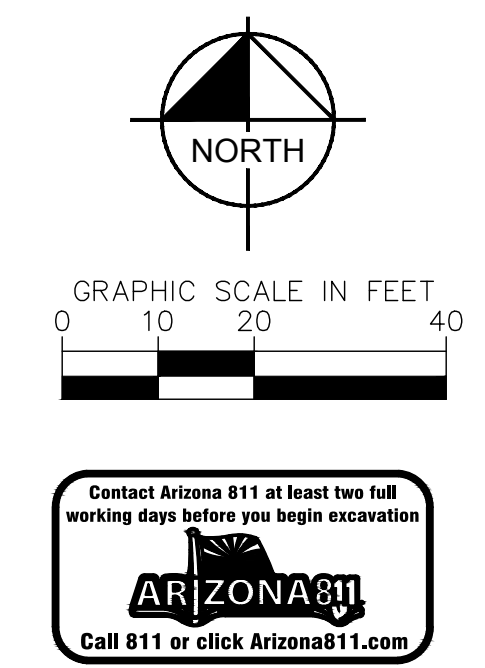
APN 212-43-601  
VILLAGE AT GREYHAWK OWNERS ASSOCIATION  
DOCUMENT NO. 2011-0525654 M.C.R.  
ZONING: R-5



VICINITY MAP  
SCOTTSDALE, AZ  
N.T.S.



KEY MAP  
N.T.S.



MATCH LINE: SEE SHEET UT3

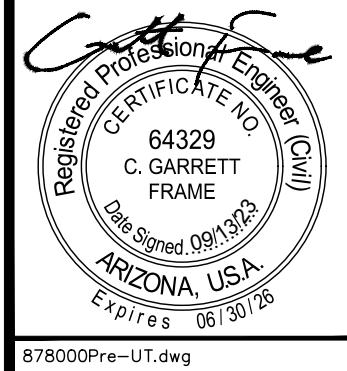
MATCH LINE: SEE SHEET UT4

MATCH LINE: SEE SHEET UT2

ARIZONA PUBLIC SERVICE ROW 14-110191  
APN: 212-36-008B

NWC LEGACY BLVD AND MILLER ROAD  
**PRELIMINARY UTILITY PLAN**  
SCOTTSDALE, ARIZONA

PROJECT No.  
291878000  
SCALE (H): 1"=20'  
SCALE (V): NONE  
DRAWN BY: HDO  
DESIGN BY: RMH  
CHECK BY: CGF  
DATE: 09/13/23



APPR BY DATE

DESCRIPTION

REV

**PUBLIC WATER MAIN NOTES**

- 1 INSTALL 8" CLASS 350 DIP WATER MAIN POLYWRAPPED, LENGTH PER PLAN, MINIMUM 3' COVER. BEDDING AND BACKFILL PER COS STD DET 2201.
- 2 INSTALL 8"x6" TEE WITH RESTRAINED JOINTS PER MAG STD DET 303.
- 3 INSTALL 8" BEND WITH RESTRAINED JOINTS PER MAG STD DET 303.
- 4 INSTALL FIRE HYDRANT ASSEMBLY WITH VALVE PER MAG STD DET 360.
- 9 CONNECT TO EXISTING 12" WATER MAIN WITH 12" BEND.
- 13 INSTALL 12"x8" TEE WITH RESTRAINED JOINTS PER MAG STD DET 303.
- 14 INSTALL 6" CLASS 350 DIP WATER MAIN POLYWRAPPED WITH TRACER WIRE, LENGTH PER PLAN, MINIMUM 3' COVER. BEDDING AND BACKFILL PER COS STD DET 2201.
- 15 INSTALL 2" TYPE K SOFT COPPER WATER SERVICE LINE CONNECTION WITH 2" METER PER COS STD DET 2330.
- 18 INSTALL 12" CLASS 350 DIP WATER MAIN POLYWRAPPED WITH TRACER WIRE, LENGTH PER PLAN. 3' MINIMUM COVER.
- 20 INSTALL 1" TYPE K SOFT COPPER LANDSCAPE SERVICE LINE CONNECTION WITH 1" METER PER COS STD DET 2330.

**PRIVATE SEWER NOTES**

- 1 INSTALL 8" SDR-35 PVC PRIVATE SEWER MAIN.
- 2 INSTALL 6" SDR-35 PVC PRIVATE SEWER SERVICE.
- 3 INSTALL 48" SEWER MANHOLE PER MAG STD DET 420-2, INVERTS PER PLAN.
- 4 CONNECT TO BUILDING SEWER AT TWO WAY CLEANOUT. REF MEP PLANS FOR CONTINUATION.
- 6 INSTALL WYE CONNECTION, INVERT PER PLAN.

**PUBLIC SEWER NOTES**

- 1 INSTALL 8" SDR-35 PVC PUBLIC SEWER MAIN.
- 3 INSTALL 48" SEWER MANHOLE PER MAG STD DET 420-2, INVERTS PER PLAN.

**PRIVATE WATER NOTES**

- 1 BUILDING DOMESTIC WATER CONNECTION, REF MEP PLANS FOR CONTINUATION.
- 2 INSTALL 3" SCH 40 PVC DOMESTIC WATER SERVICE.
- 3 INSTALL 2" REDUCED PRESSURE BACKFLOW PREVENTION ASSEMBLY PER COS STD DET 2354.
- 4 INSTALL 1" REDUCED PRESSURE BACKFLOW PREVENTION ASSEMBLY PER COS STD DET 2354.

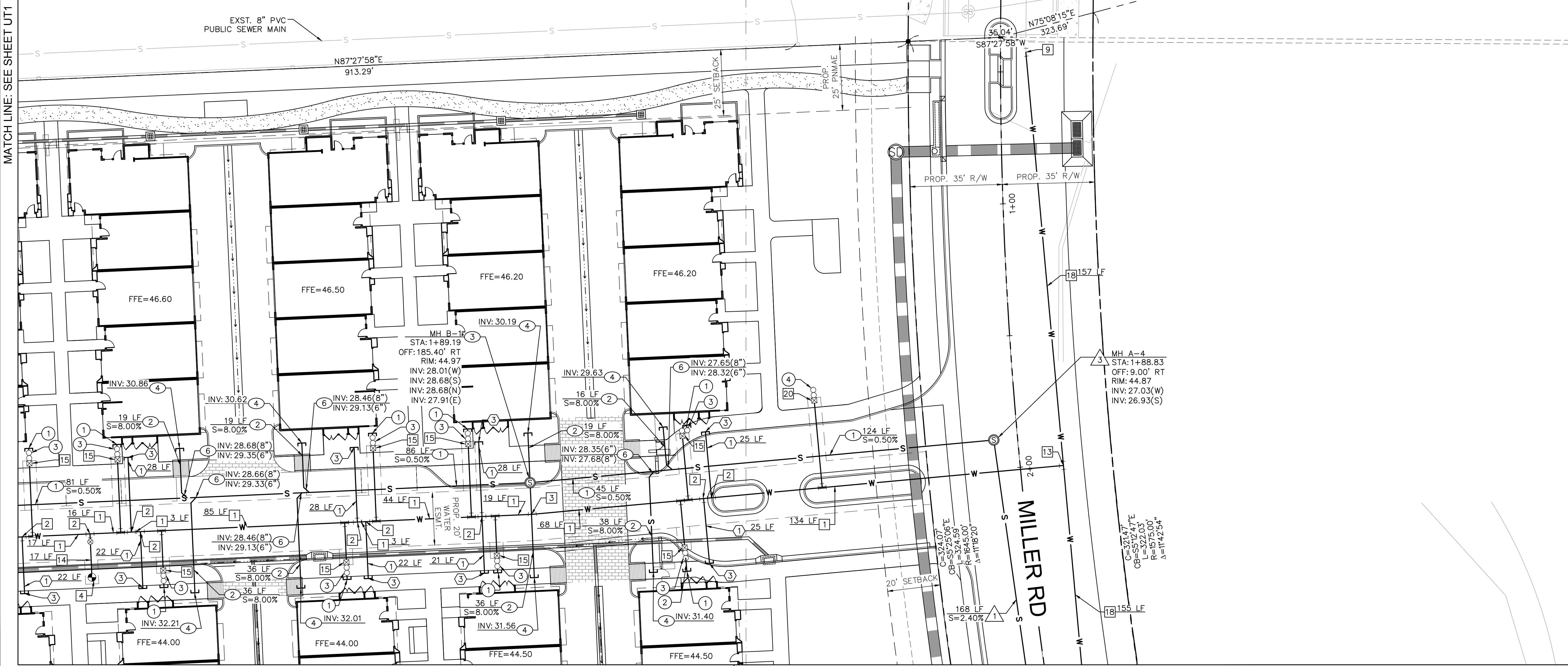
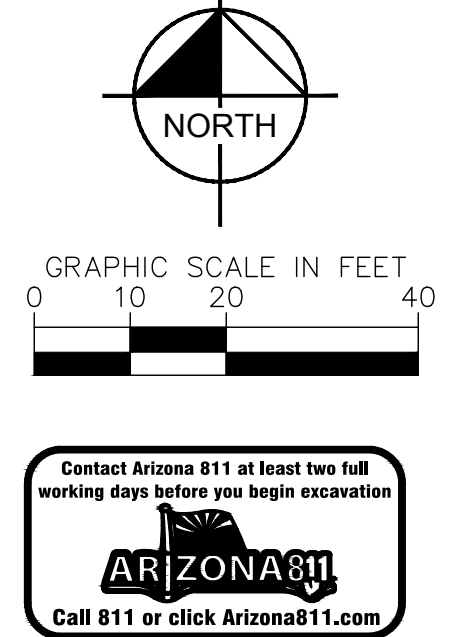
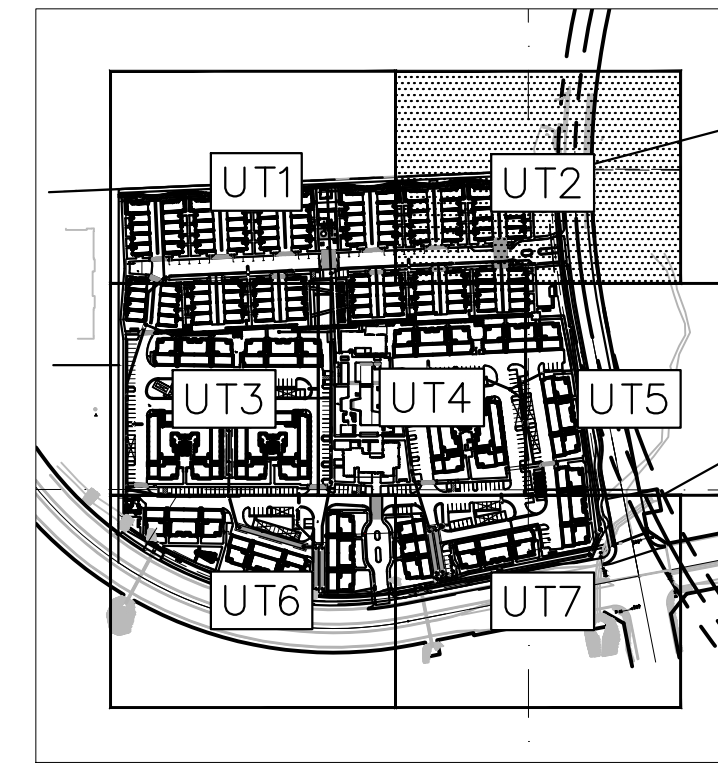
**PRIVATE FIRELINE NOTES**

- 1 INSTALL 6" CLASS 350 DIP FIRELINE POLYWRAPPED WITH TRACER WIRE, LENGTH PER PLAN, MINIMUM 3' COVER. BEDDING AND BACKFILL PER COS STD DET 2201.
- 3 BUILDING FIRELINE CONNECTION. INSTALL RISER AND BACKFLOW PREVENTOR PER COS STD DET 2369 IN FIRE RISER ROOM. REF FIRE SPRINKLER PLANS FOR CONTINUATION.

**NOTES**

1. ADD 1500' TO ALL ELEVATIONS.
2. ALL ELEVATIONS ARE INVERT ELEVATIONS, UNLESS OTHERWISE NOTED.
3. SEE SHEET UT1 FOR LEGEND.
4. ALL PIPE CROSSING INFORMATION IS PRELIMINARY AND SUBJECT TO CHANGE DURING FINAL DESIGN.
5. STATIONS AND OFFSETS ARE BASED ON MILLER ROAD CENTERLINE.

APN 212-43-601  
 VILLAGE AT GREYHAWK OWNERS ASSOCIATION  
 DOCUMENT NO. 2011-0525654 M.C.R.  
 ZONING: R-5



MATCH LINE: SEE SHEET UT1

MATCH LINE: SEE SHEET UT4

MATCH LINE: SEE SHEET UT5

NWC LEGACY BLVD AND MILLER ROAD  
**PRELIMINARY UTILITY PLAN**  
 SCOTTSDALE, ARIZONA

PROJECT No.  
291878000  
 SCALE (H): 1"=20'  
 SCALE (V): NONE  
 DRAWN BY: HDO  
 DESIGN BY: RMH  
 CHECK BY: CGF  
 DATE: 09/13/23



878000Pre-UT.dwg  
**UT2**  
 2 OF 7 SHEETS

**Kimley»Horn**  
 © 2023 KIMLEY-HORN AND ASSOCIATES, INC.  
 7740 North 16th Street, Suite 300  
 Phoenix, Arizona 85020 (602) 944-5500

MATCH LINE: SEE SHEET UT1

PUBLIC WATER MAIN NOTES

- 1 INSTALL 8" CLASS 350 DIP WATER MAIN POLYWRAPPED, LENGTH PER PLAN, MINIMUM 3' COVER. BEDDING AND BACKFILL PER COS STD DET 2201.
- 2 INSTALL 8"x6" TEE WITH RESTRAINED JOINTS PER MAG STD DET 303.
- 3 INSTALL 8" BEND WITH RESTRAINED JOINTS PER MAG STD DET 303.
- 4 INSTALL FIRE HYDRANT ASSEMBLY WITH VALVE PER MAG STD DET 360.
- 7 INSTALL 8"x8" CROSS CONNECTION WITH THRUST BLOCKS PER MAG STD DET 380.
- 10 INSTALL 8"x8" TEE WITH THRUST BLOCKS PER MAG STD DET 380.
- 14 INSTALL 6" CLASS 350 DIP WATER MAIN POLYWRAPPED WITH TRACER WIRE, LENGTH PER PLAN, MINIMUM 3' COVER. BEDDING AND BACKFILL PER COS STD DET 2201.
- 15 INSTALL 2" TYPE K SOFT COPPER WATER SERVICE LINE CONNECTION WITH 2" METER PER COS STD DET 2330.
- 16 INSTALL 3" DIP WATER SERVICE LINE CONNECTION WITH 3" METER PER COS STD DET 2345-1.
- 21 INSTALL 8"x6" REDUCER.
- 22 INSTALL 8"x3" TEE WITH RESTRAINED JOINTS PER MAG STD DET 303.

PRIVATE SEWER NOTES

- 1 INSTALL 8" SDR-35 PVC PRIVATE SEWER MAIN.
- 2 INSTALL 6" SDR-35 PVC PRIVATE SEWER SERVICE.
- 3 INSTALL 48" SEWER MANHOLE PER MAG STD DET 420-2, INVERTS PER PLAN.
- 4 CONNECT TO BUILDING SEWER AT TWO WAY CLEANOUT. REF MEP PLANS FOR CONTINUATION.
- 5 SEWER CLEANOUT PER MAG STD DET 441.
- 6 INSTALL WYE CONNECTION, INVERT PER PLAN.

PRIVATE FIRELINE NOTES

- 1 INSTALL 6" CLASS 350 DIP FIRELINE POLYWRAPPED WITH TRACER WIRE, LENGTH PER PLAN, MINIMUM 3' COVER. BEDDING AND BACKFILL PER COS STD DET 2201.
- 3 BUILDING FIRELINE CONNECTION. INSTALL RISER AND BACKFLOW PREVENTOR PER COS STD DET 2369 IN FIRE RISER ROOM. REF FIRE SPRINKLER PLANS FOR CONTINUATION.

PRIVATE WATER NOTES

- 1 BUILDING DOMESTIC WATER CONNECTION, REF MEP PLANS FOR CONTINUATION.
- 2 INSTALL 3" SCH 40 PVC DOMESTIC WATER SERVICE.
- 3 INSTALL 2" REDUCED PRESSURE BACKFLOW PREVENTION ASSEMBLY PER COS STD DET 2354.
- 5 INSTALL 3" REDUCED PRESSURE BACKFLOW PREVENTION ASSEMBLY PER COS STD DET 2353.

NOTES

- 1. ADD 1500' TO ALL ELEVATIONS.
- 2. ALL ELEVATIONS ARE INVERT ELEVATIONS, UNLESS OTHERWISE NOTED.
- 3. SEE SHEET UT1 FOR LEGEND.
- 4. ALL PIPE CROSSING INFORMATION IS PRELIMINARY AND SUBJECT TO CHANGE DURING FINAL DESIGN.
- 5. STATIONS AND OFFSETS ARE BASED ON MILLER ROAD CENTERLINE.

MATCH LINE: SEE SHEET UT4

MATCH LINE: SEE SHEET UT6

ARIZONA PUBLIC SERVICE ROW 14-110191  
APN: 212-36-008B

CITY OF SCOTTSDALE  
APN: 212-36-009C

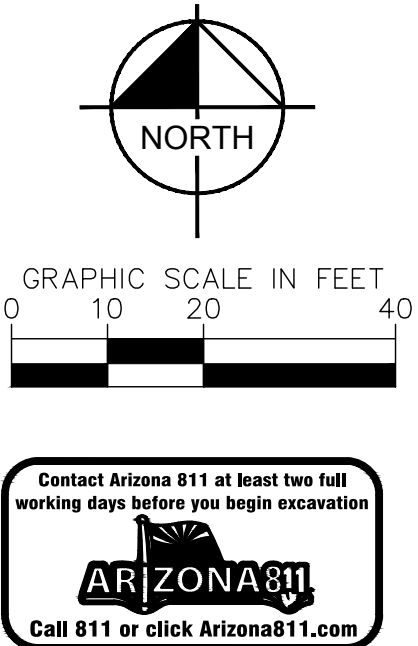
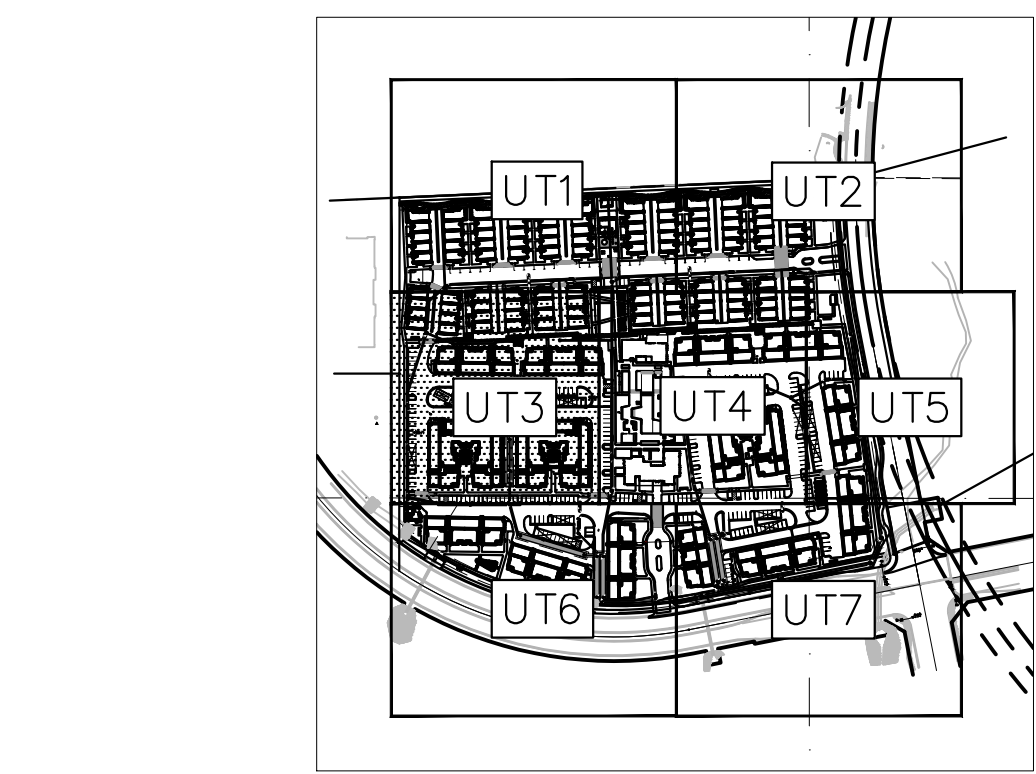
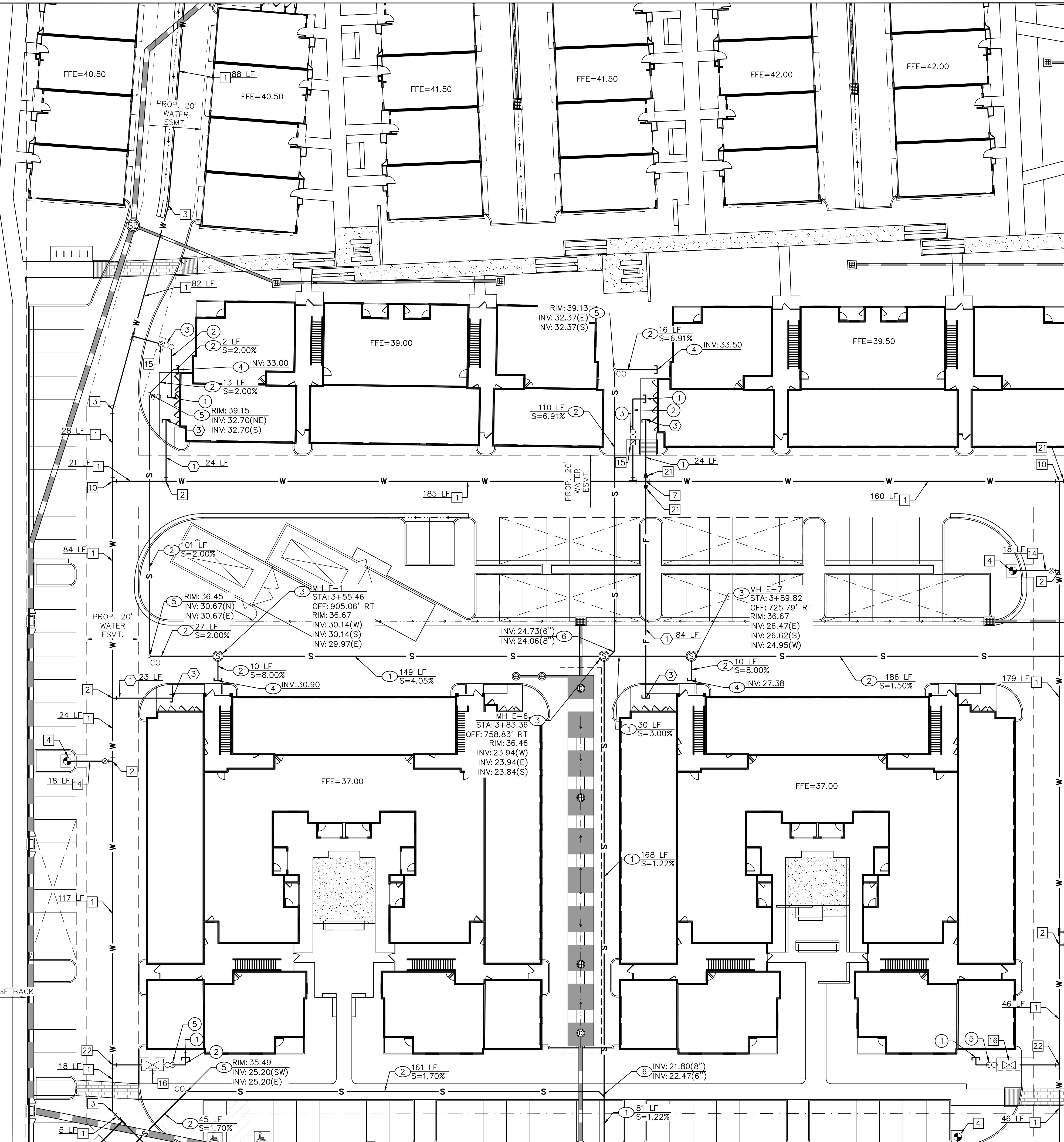
NO01'04"E 365.64'

NO02'50"E 349.10'

NO02'50"E 349.10'

NO02'50"E 349.10'

15' SETBACK



**Kimley»Horn**  
 © 2023 KIMLEY-HORN AND ASSOCIATES, INC.  
 7740 North 16th Street, Suite 300  
 Phoenix, Arizona 85020 (602) 944-5500

NWC LEGACY BLVD AND MILLER ROAD  
**PRELIMINARY UTILITY PLAN**  
 SCOTTSDALE, ARIZONA

PROJECT No.  
291878000  
 SCALE (H): 1"=20'  
 SCALE (V): NONE  
 DRAWN BY: HDO  
 DESIGN BY: RMH  
 CHECK BY: CGF  
 DATE: 09/13/23

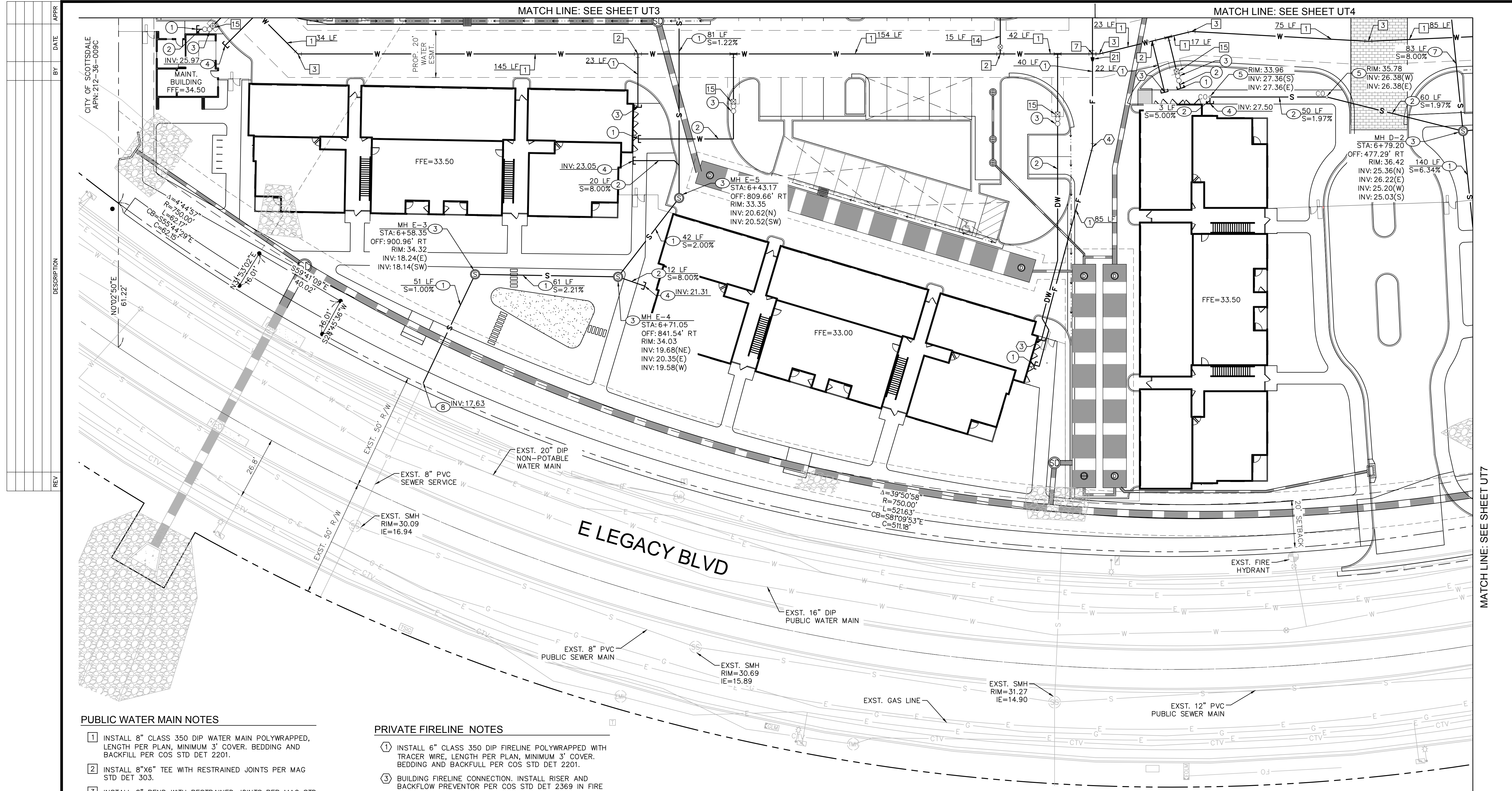
Professional Engineer  
 CERTIFICATE NO.  
 64329  
 C. GARRETT  
 FRAME  
 ARIZONA U.S.A.  
 Expires 10/31/26

878000Pre-UT.dwg  
**UT3**  
 3 OF 7 SHEETS

Contact Arizona 811 at least two full working days before you begin excavation  
 ARIZONA 811  
 Call 811 or click Arizona811.com







**PUBLIC WATER MAIN NOTES**

- 1 INSTALL 8" CLASS 350 DIP WATER MAIN POLYWRAPPED, LENGTH PER PLAN, MINIMUM 3' COVER, BEDDING AND BACKFILL PER COS STD DET 2201.
- 2 INSTALL 8"x6" TEE WITH RESTRAINED JOINTS PER MAG STD DET 303.
- 3 INSTALL 8" BEND WITH RESTRAINED JOINTS PER MAG STD DET 303.
- 7 INSTALL 8"x8" CROSS CONNECTION WITH THRUST BLOCKS PER MAG STD DET 380.
- 14 INSTALL 6" CLASS 350 DIP WATER MAIN POLYWRAPPED WITH TRACER WIRE, LENGTH PER PLAN, MINIMUM 3' COVER, BEDDING AND BACKFILL PER COS STD DET 2201.
- 15 INSTALL 2" TYPE K SOFT COPPER WATER SERVICE LINE CONNECTION WITH 2" METER PER COS STD DET 2330.
- 21 INSTALL 8"x6" REDUCER.

**PRIVATE SEWER NOTES**

- 1 INSTALL 8" SDR-35 PVC PRIVATE SEWER MAIN.
- 2 INSTALL 6" SDR-35 PVC PRIVATE SEWER SERVICE.
- 3 INSTALL 48" SEWER MANHOLE PER MAG STD DET 420-2, INVERTS PER PLAN.
- 4 CONNECT TO BUILDING SEWER AT TWO WAY CLEANOUT. REF MEP PLANS FOR CONTINUATION.
- 5 SEWER CLEANOUT PER MAG STD DET 441.
- 7 PROPOSED 4" SDR 35 PVC PRIVATE SEWER SERVICE.
- 8 REMOVE PLUG AND CONNECT TO EXISTING SEWER STUB.

**PRIVATE FIRELINE NOTES**

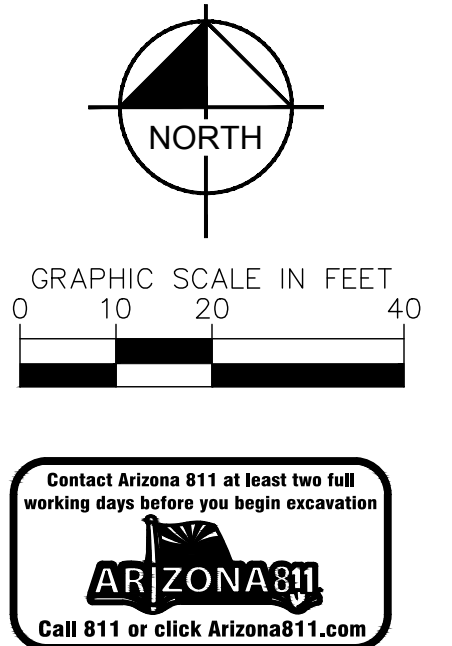
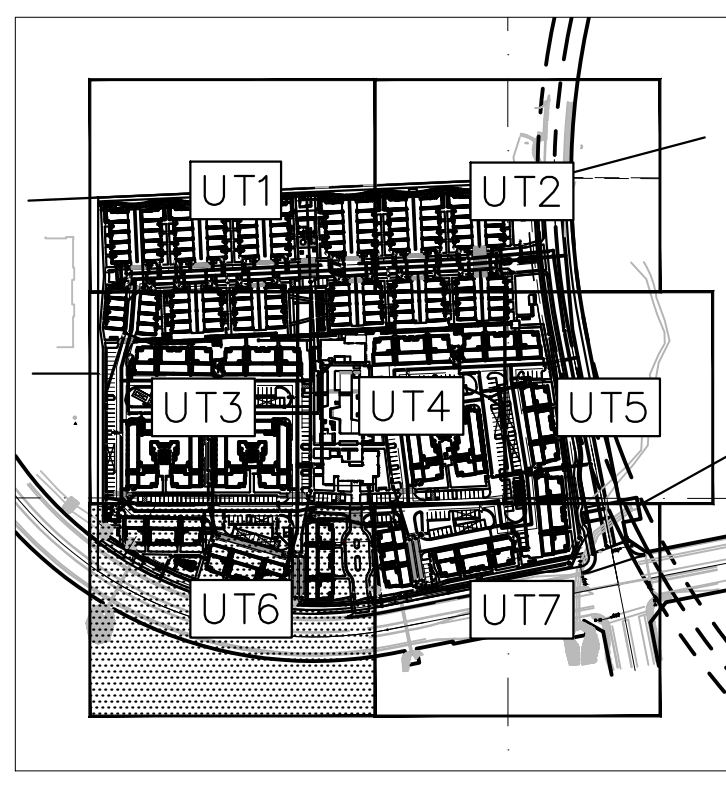
- 1 INSTALL 6" CLASS 350 DIP FIRELINE POLYWRAPPED WITH TRACER WIRE, LENGTH PER PLAN, MINIMUM 3' COVER, BEDDING AND BACKFILL PER COS STD DET 2201.
- 3 BUILDING FIRELINE CONNECTION. INSTALL RISER AND BACKFLOW PREVENTOR PER COS STD DET 2369 IN FIRE RISER ROOM. REF FIRE SPRINKLER PLANS FOR CONTINUATION.
- 4 INSTALL 6" BEND WITH RESTRAINED JOINTS PER MAG STD DET 303.

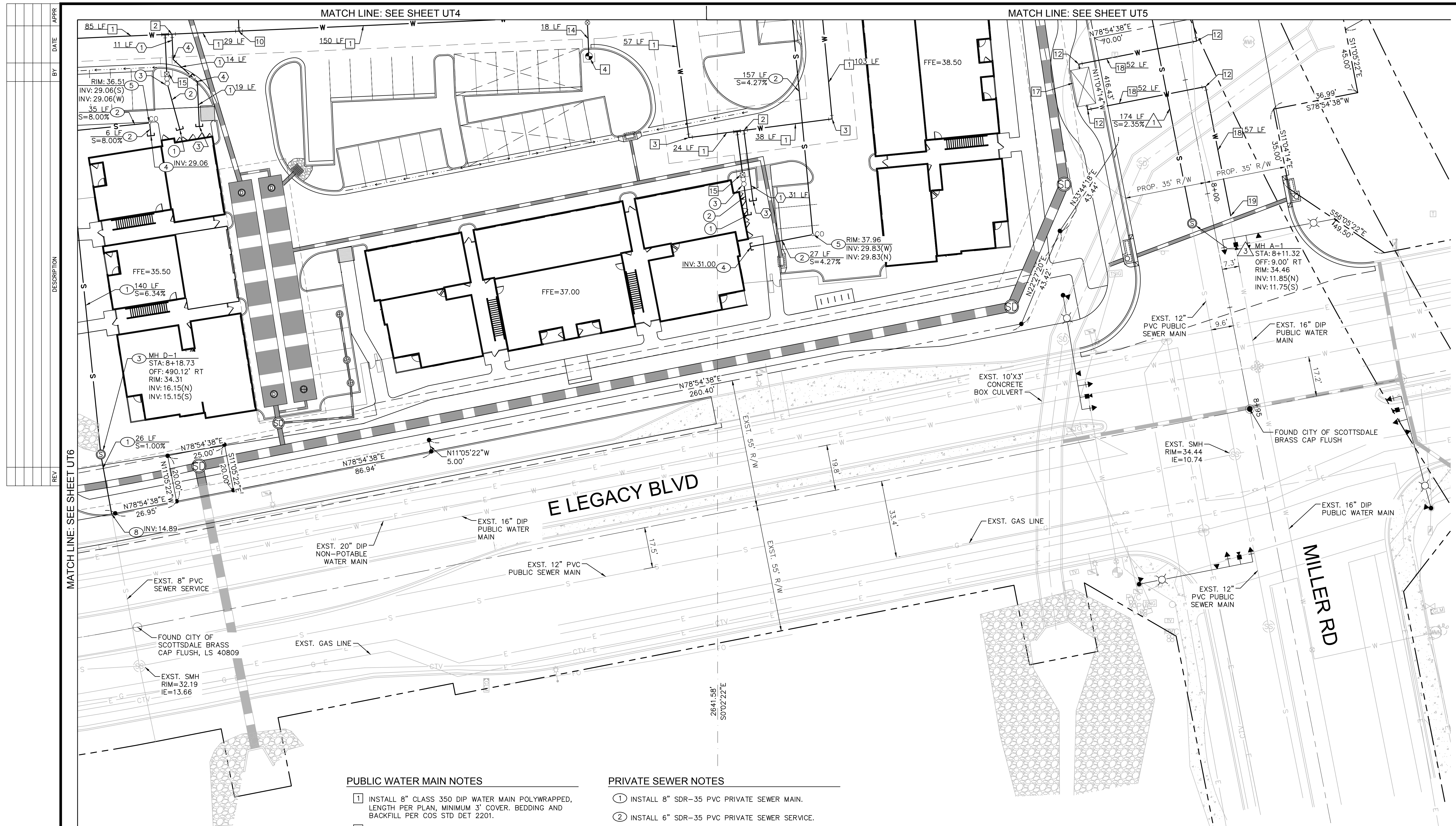
**PRIVATE WATER NOTES**

- 1 BUILDING DOMESTIC WATER CONNECTION, REF MEP PLANS FOR CONTINUATION.
- 2 INSTALL 3" SCH 40 PVC DOMESTIC WATER SERVICE.
- 3 INSTALL 2" REDUCED PRESSURE BACKFLOW PREVENTION ASSEMBLY PER COS STD DET 2354.

**NOTES**

- 1. ADD 1500' TO ALL ELEVATIONS.
- 2. ALL ELEVATIONS ARE INVERT ELEVATIONS, UNLESS OTHERWISE NOTED.
- 3. SEE SHEET UT1 FOR LEGEND.
- 4. ALL PIPE CROSSING INFORMATION IS PRELIMINARY AND SUBJECT TO CHANGE DURING FINAL DESIGN. STATIONS AND OFFSETS ARE BASED ON MILLER ROAD CENTERLINE.





- PUBLIC SEWER NOTES**
1. INSTALL 8" SDR-35 PVC PUBLIC SEWER MAIN.
  3. INSTALL 48" SEWER MANHOLE PER MAG STD DET 420-2, INVERTS PER PLAN.
- PRIVATE SEWER NOTES**
1. BUILDING DOMESTIC WATER CONNECTION, REF MEP PLANS FOR CONTINUATION.
  2. INSTALL 3" SCH 40 PVC DOMESTIC WATER SERVICE.
  3. INSTALL 2" REDUCED PRESSURE BACKFLOW PREVENTION ASSEMBLY PER COS STD DET 2354.

- PUBLIC WATER MAIN NOTES**
1. INSTALL 8" CLASS 350 DIP WATER MAIN POLYWRAPPED, LENGTH PER PLAN, MINIMUM 3' COVER. BEDDING AND BACKFILL PER COS STD DET 2201.
  2. INSTALL 8"x6" TEE WITH RESTRAINED JOINTS PER MAG STD DET 303.
  3. INSTALL 8" BEND WITH RESTRAINED JOINTS PER MAG STD DET 303.
  4. INSTALL FIRE HYDRANT ASSEMBLY WITH VALVE PER MAG STD DET 360.
  10. INSTALL 8"x8" TEE WITH THRUST BLOCKS PER MAG STD DET 380.
  12. INSTALL 12" BEND WITH THRUST BLOCKS PER MAG STD DET 380.
  14. INSTALL 6" CLASS 350 DIP WATER MAIN POLYWRAPPED WITH TRACER WIRE, LENGTH PER PLAN, MINIMUM 3' COVER. BEDDING AND BACKFILL PER COS STD DET 2201.
  15. INSTALL 2" TYPE K SOFT COPPER WATER SERVICE LINE CONNECTION WITH 2" METER PER COS STD DET 2330.
  17. PROPOSED PRESSURE REDUCING VALVE PER COS STD DETAIL 2342-1.
  18. INSTALL 12" CLASS 350 DIP WATER MAIN POLYWRAPPED WITH TRACER WIRE, LENGTH PER PLAN. 3' MINIMUM COVER.
  19. CONNECT TO EXISTING WATER MAIN WITH 16"x12" REDUCER WITH THRUST BLOCKS PER MAG STD DET 380.

- PRIVATE SEWER NOTES**
1. INSTALL 8" SDR-35 PVC PRIVATE SEWER MAIN.
  2. INSTALL 6" SDR-35 PVC PRIVATE SEWER SERVICE.
  3. INSTALL 48" SEWER MANHOLE PER MAG STD DET 420-2, INVERTS PER PLAN.
  4. CONNECT TO BUILDING SEWER AT TWO WAY CLEANOUT. REF MEP PLANS FOR CONTINUATION.
  5. SEWER CLEANOUT PER MAG STD DET 441.
  8. REMOVE PLUG AND CONNECT TO EXISTING SEWER STUB.
- PRIVATE FIRELINE NOTES**
1. INSTALL 6" CLASS 350 DIP FIRELINE POLYWRAPPED WITH TRACER WIRE, LENGTH PER PLAN, MINIMUM 3' COVER. BEDDING AND BACKFILL PER COS STD DET 2201.
  3. BUILDING FIRELINE CONNECTION. INSTALL RISER AND BACKFLOW PREVENTOR PER COS STD DET 2369 IN FIRE RISER ROOM. REF FIRE SPRINKLER PLANS FOR CONTINUATION.
  4. INSTALL 6" BEND WITH RESTRAINED JOINTS PER MAG STD DET 303.

- NOTES**
1. ADD 1500' TO ALL ELEVATIONS.
  2. ALL ELEVATIONS ARE INVERT ELEVATIONS, UNLESS OTHERWISE NOTED.
  3. SEE SHEET UT1 FOR LEGEND.
  4. ALL PIPE CROSSING INFORMATION IS PRELIMINARY AND SUBJECT TO CHANGE DURING FINAL DESIGN.
  5. STATIONS AND OFFSETS ARE BASED ON MILLER ROAD CENTERLINE.

