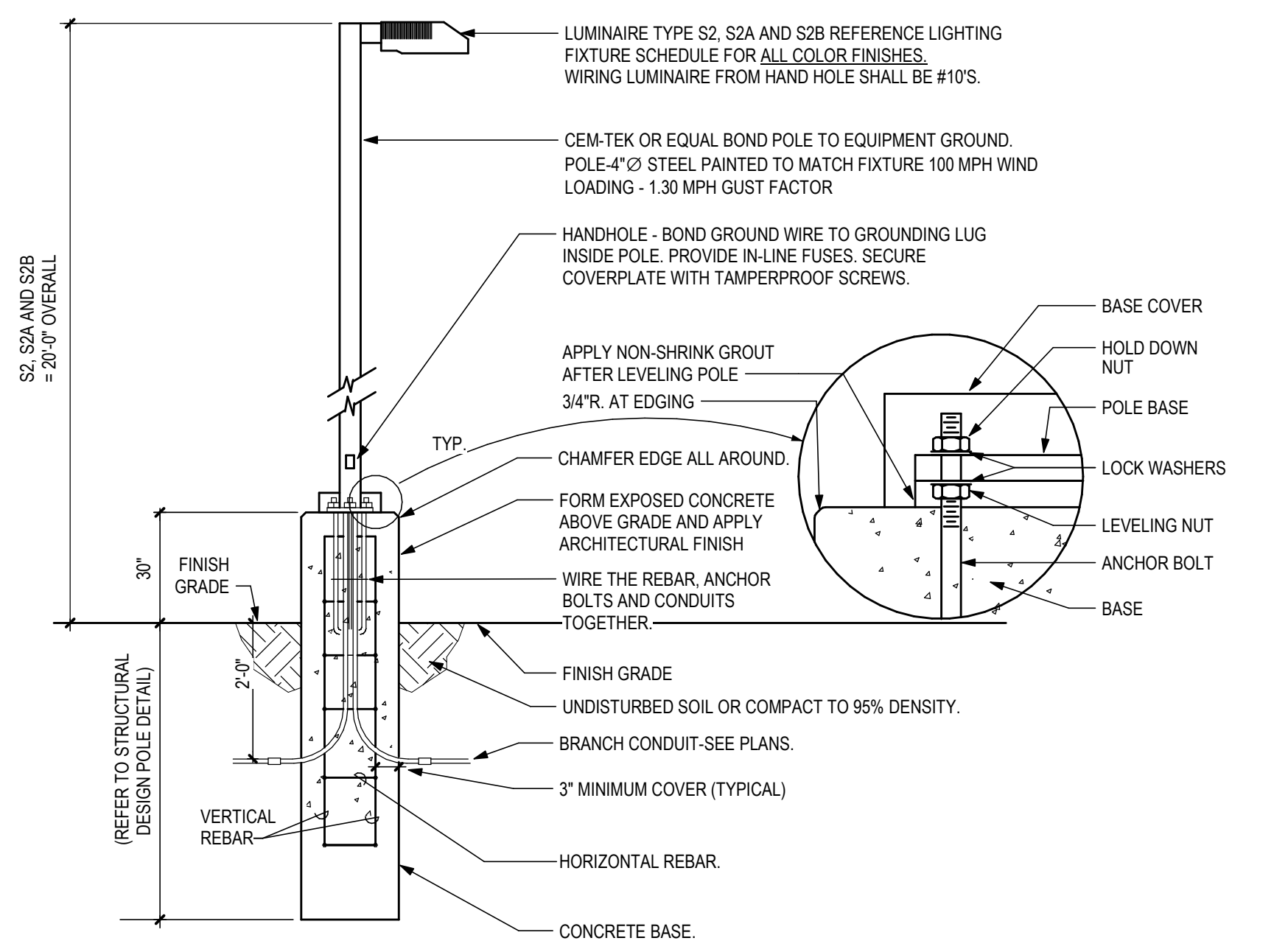
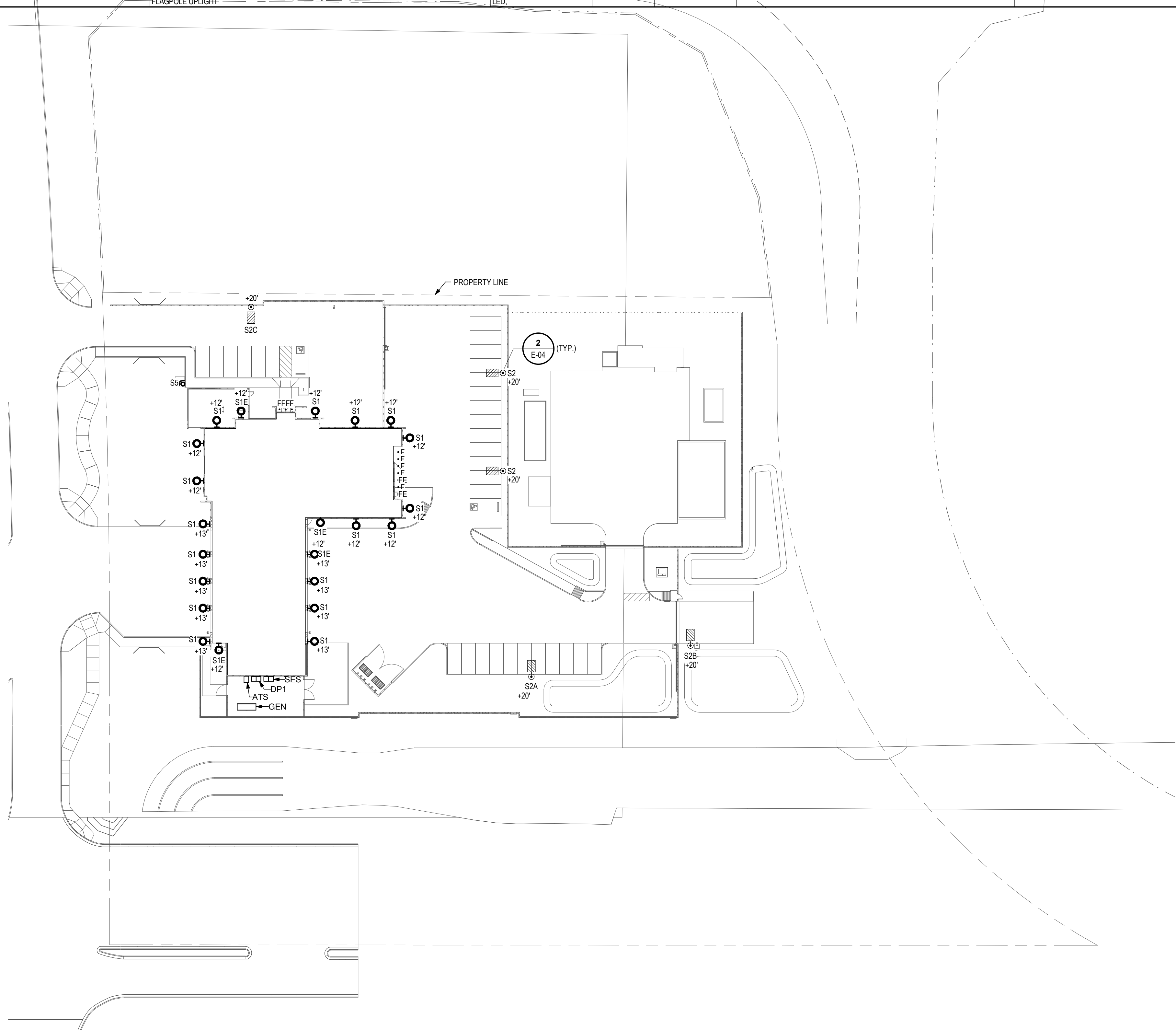


LIGHTING FIXTURE SCHEDULE DRB

MARK	MANUFACTURER	CATALOG NUMBER	DESCRIPTION	LAMPS	VOLTAGE	MOUNTING	REMARKS	PRIOR APPROVED EQUAL
F	HALO	SMDR-6-930-WH	4" ROUND DOWNLIGHT	600 LUMENS, 3000K, 10W	120 V	RECESSED		
FE	HALO	SMDR-6-930-WH +REMOTE BATTERY	4" ROUND DOWNLIGHT WITH REMOTE EMERGENCY BATTERY PACK.	600 LUMENS, 3000K, 10W	120 V	RECESSED	PROVIDE WITH REMOTE EMERGENCY BATTERY PACK. INSTALL IN AN ACCESSIBLE LOCATION INSIDE BUILDING.	
GA	METALLUX	4SNLED-LD5-34SLC-UNV-L835-CD1-AYC-CHAINSET	4' INDUSTRIAL LED STRIP, 0-10V DIMMING WITH CHAIN HANGER.	3567 LUMENS, 3500K, 25W	120 V	CHAIN HANGER		
I	NEORAY	S12ADR-S-796D-8-35-GYP-12F0-1-U-DD-F-W	4" APERTURE LINEAR LED, 0-10V DIMMING.	795 LM/FT, 3500K, 6.8W/FT	120 V	RECESSED		
IE	NEORAY	S12ADR-S-796D-8-35-GYP-4F0-1-E-U-DD-F-W	4" APERTURE LINEAR LED, 0-10V DIMMING WITH EMERGENCY BATTERY PACK.	795 LM/FT, 3500K, 6.8W/FT	120 V	RECESSED		
M	BIRCHWOOD LIGHTING	STE-LED-325-AE-R-SLO-35-8-GR-SC-FW-120-D20-CSS-XX	4" LINEAR LED WITH FROSTED WHITE LENS	3144 LUMENS, 3500K, 35.2W	120 V	PENDANT		
R	PORTFOLIO	LDSQ4C-15-90-35-D010-SQ-H	4" SQUARE LED DOWNLIGHT	1500 LUMENS, 3500K, 16W	120 V	RECESSED		
RE	PORTFOLIO	LDSQ4C-15-90-35-D010-SQ-H-EM14	4" SQUARE LED DOWNLIGHT WITH EMERGENCY BATTERY PACK.	1500 LUMENS, 3500K, 16W	120 V	RECESSED		
S1	LUMARK	XTOR2B-Y-BZ	LED WALL PACK WITH 0-10V DIMMABLE DRIVER.	2103 LUMENS, 3000K, 18W	120 V	SURFACE		
S1E	LUMARK	XTOR2B-Y-BZ+REMOTE BATTERY	LED WALL PACK WITH 0-10V DIMMABLE DRIVER AND REMOTE EMERGENCY BATTERY PACK.	2103 LUMENS, 3000K, 18W	120 V	SURFACE	PROVIDE WITH REMOTE EMERGENCY BATTERY PACK. INSTALL IN AN ACCESSIBLE LOCATION INSIDE BUILDING.	
S2	MCGRAW	GLEON-SA2A-730-U-14FT-BZ	POLE MOUNTED AREA LIGHT, TYPE 4FT DISTRIBUTION WITH 0-10V DIMMABLE DRIVER.	9591 LUMENS, 3000K, 66W	120 V	POLE		
S2A	MCGRAW	GLEON-SA2A-730-U-T3-BZ	POLE MOUNTED AREA LIGHT, TYPE 3 DISTRIBUTION WITH 0-10V DIMMABLE DRIVER.	9537 LUMENS, 3000K, 66W	120 V	POLE		
S2B	MCGRAW	GLEON-SA2A-730-U-T2-BZ	POLE MOUNTED AREA LIGHT, TYPE 2 DISTRIBUTION WITH 0-10V DIMMABLE DRIVER.	9357 LUMENS, 3000K, 66W	120 V	POLE		
S2C	MCGRAW	GLEON-SA2A-730-U-T3-BZ-HSS	POLE MOUNTED AREA LIGHT, TYPE 3 DISTRIBUTION WITH 0-10V DIMMABLE DRIVER AND HOUSE SIDE SHIELD.	6949 LUMENS, 3000K, 66W	120 V	POLE		
S5			FLAGPOLE UPLIGHT	LED.				



DETAIL NOTES

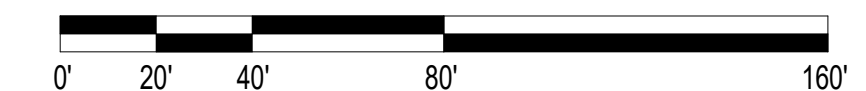
- POLE BASE DETAIL AND POLE ELEVATION SHOW INTENT AND MINIMUM CONSTRUCTION SIZES. MANUFACTURER SHALL PROVIDE EXACT REQUIREMENTS FOR CONSTRUCTION / INSTALLATION. PROVIDE AS REQUIRED. POLE BASE DETAIL SHALL BE SUBMITTED FOR REVIEW TO ENGINEER PRIOR TO ANY BASE FABRICATION AND INSTALLATION. DETAIL SHALL BE SEALED BY A REGISTERED ARIZONA STRUCTURAL ENGINEER.
- ALL SPLICES SHALL BE WATER PROOF IF LOCATED 1FT ABOVE GRADE OR LOWER. CONNECTORS SHALL BE EQUAL TO RAYCHEM BOLTED 'GELCAP' SERIES OF CONNECTORS. ALL SPLICES 1 FOOT ABOVE GRADE OR HIGHER SHALL BE BOLTED OR COMPRESSION TYPE AND TAPED.
- ALL LIGHT POLES SHALL HAVE A CONCRETE PULL BOX WITH TAMPERPROOF BOLTS SECURING THE LID LOCATED WITHIN 48" OF THE BASE. THE BRANCH CIRCUIT SERVING THE LIGHT POLE SHALL BE ROUTED FROM THE PULL BOX TO THE LIGHT POLE.
- INSTALL INLINE FUSES IN THE LIGHT POLE HAND HOLE. THE COVERPLATE SHALL BE SECURED WITH TAMPERPROOF SCREWS.
- ALL CIRCUITS ENTERING PULL BOXES SHALL HAVE 24" OF SPARE CONDUCTOR NEATLY COILED IN THE BOX PRIOR TO EXITING TO THE NEXT PULL BOX. SECURE COILS OF WIRE WITH PLASTIC CABLE TIES.

2 SITE LIGHTINGPOLE BASE ASSEMBLY

N.T.S.

1 ELECTRICAL LIGHTING SITE PLAN

1" = 40'-0"



PRELIMINARY NOT FOR CONSTRUCTION



5240 North 16th Street, Suite 101
Phoenix, Arizona 85016
Telephone: (602) 279-4373
Fax: (602) 279-9110
A Limited Liability Company
© Copyright 2022

CITY OF SCOTTSDALE
FIRE STATION #612
18455 N. HAYDEN RD. SCOTTSDALE, AZ 85255

NO.	REVISION	DATE

PROJECT NO.: 2021.028
DATE: 7/27/2023
DESIGNED BY: Designer
DRAWN BY: Author
APPROVED BY: Approver

SHEET TITLE:
SCOTTSDALE F.S. #612
ELECTRICAL LIGHTING
SITE PLAN & LIGHTING
SCHEDULE

SHEET NUMBER:
E-04