



Flow Test Summary

Project Name: EJFT 23302 - VQHS
Project Address: N Hayden Rd & E Dixileta Dr, Scottsdale, AZ 85266
Date of Flow Test: 2023-08-02
Time of Flow Test: 7:30 AM
Data Reliable Until: 2024-02-02
Conducted By: Steven Saethre & Simon Rohklin (EJ Flow Tests) 602.999.7637
Witnessed By: Christopher Mendez (City of Scottsdale) 602.908.9046
City Forces Contacted: City of Scottsdale (602.908.9046)
Permit Number: C72915

Raw Flow Test Data

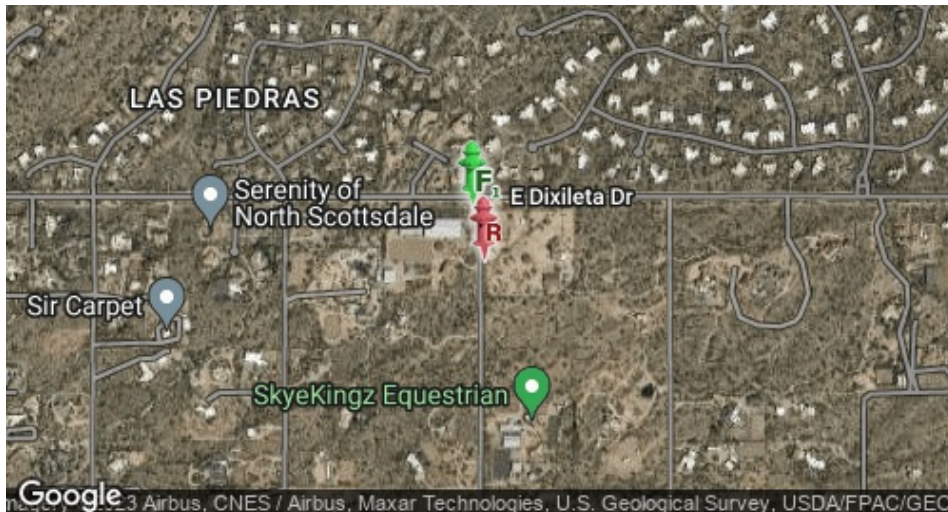
Static Pressure: 51.0 PSI
Residual Pressure: 41.0 PSI
Flowing GPM: 1,783
GPM @ 20 PSI: 3,285


Data with a 10 % Safety Factor

Static Pressure: 45.9 PSI
Residual Pressure: 35.9 PSI
Flowing GPM: 1,783
GPM @ 20 PSI: 2,981

Hydrant F₁

Pitot Pressure (1): 25 PSI
Coefficient of Discharge (1): 0.9
Hydrant Orifice Diameter (1): 4 inches
Additional Coefficient 0.83 on orifice #1



 Static-Residual Hydrant

 Flow Hydrant

Distance Between F₁ and R
384 ft (measured linearly)

Static-Residual Elevation
2253 ft (above sea level)

Flow Hydrant (F₁) Elevation
2257 ft (above sea level)

Elevation & distance values are approximate

Static-Residual Hydrant



Flow Hydrant (only hydrant F1 shown for clarity)



Approximate Project Site



Water Supply Curve N^{1.85} Graph

