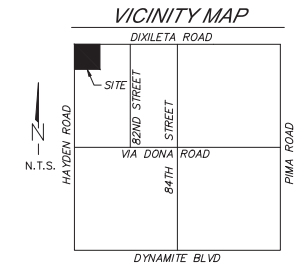


W:\Clients\23WHC802_VQHS\CAD&Drawings\Working\23WHC802_G&D DESIGN LAYOUTS.dwg C4.1 PHOTOMETRIC PLAN 3/14/2024 11:47:48 AM

PROJECT CONTACTS

OWNER
 VARGO QUARTER HORSES LLC
 12255 E PARAISO DR, LOT 5
 SCOTTSDALE, AZ 85255
 ATTN: J. MICHAEL VARGO
 PH: 614-205-8045
 EMAIL: MVARGO@VARGOMAIL.COM

WESTERN HERITAGE CONSULTING & ENGINEERING
 RYAN ALTENBURG
 PO BOX 2117
 MILLS, WY 82644
 RYAN@WESTERNHCE.COM



CASE# 21-DR-2002#2

VARGO QUARTER HORSES, LLC

PHOTOMETRIC PLAN

CITY OF SCOTTSDALE, AZ

SITE DATA

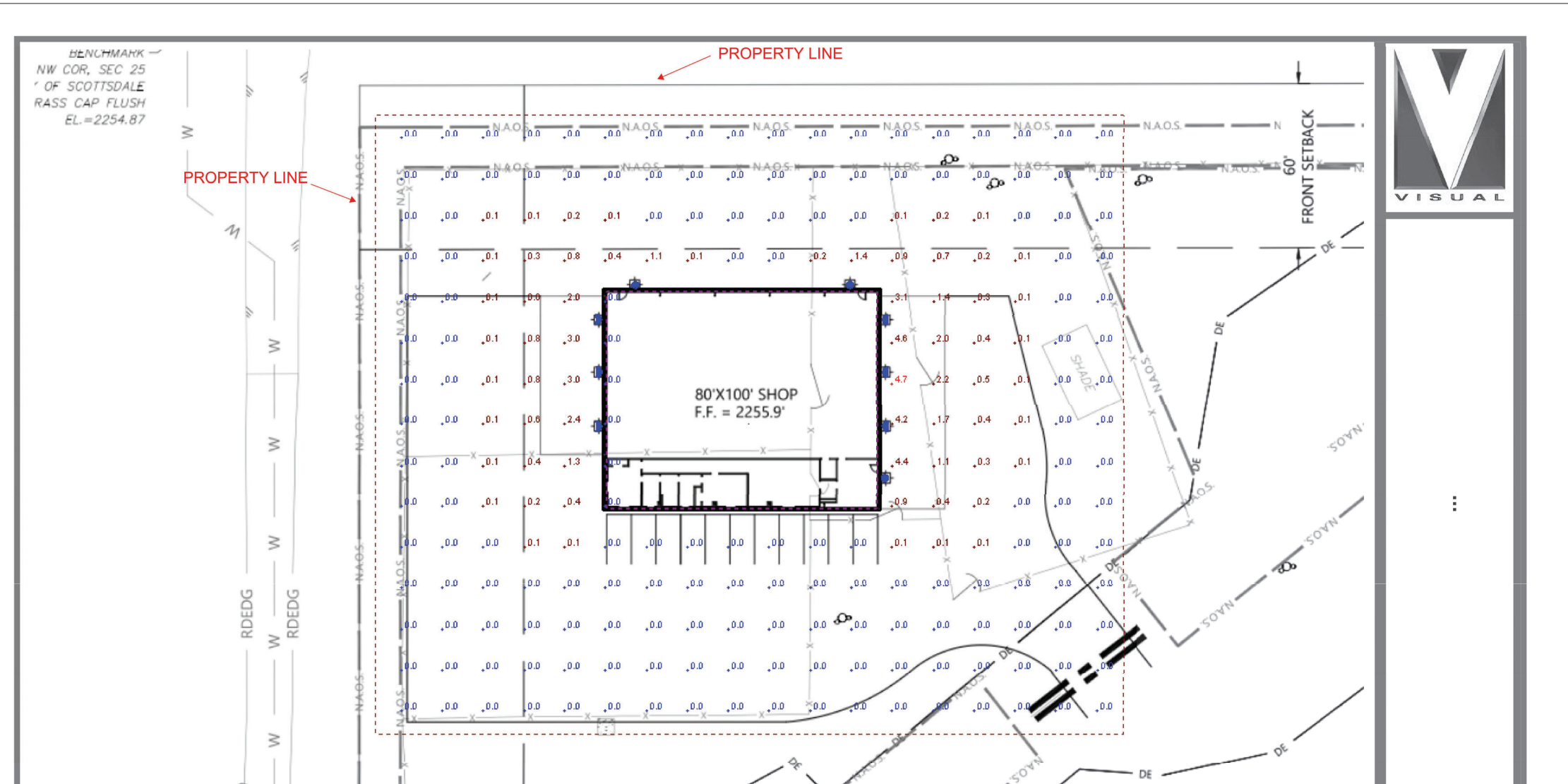
A.P.N.	216-70-005L
SITE ADDRESS	29607 N. HAYDEN RD.
NET AREA	383,691 S.F.
PARCEL ZONING	R1-190 ESL FO
EXISTING RESIDENCE	4,833 S.F.
EXISTING BARN	8,899 S.F.
EXISTING SHADES	4,846 S.F.
EXISTING SHED	115 S.F.
EXISTING COVD PEN	3,386 S.F.
EXISTING WALL ENCLOSURES	8,066 S.F.
NEW SHOP	8,000 S.F.
FUTURE BARN	8,320 S.F.
TOTAL	46,183 S.F. OR 12% OPEN SPACE
	337,508 S.F.

LEGAL DESCRIPTION

PER TITLE REPORT
 THE NORTHWEST QUARTER OF THE NORTHWEST QUARTER OF THE NORTHWEST QUARTER OF SECTION 25, TOWNSHIP 5 NORTH, RANGE 4 EAST OF THE GILA AND SALT RIVER BASE AND MERIDIAN, MARICOPA COUNTY, ARIZONA.

EXTERIOR LIGHTING

- EXISTING EXTERIOR SITE LIGHTING TO REMAIN PER CASE 21-DR-2002 WITH NO MODIFICATIONS.
- LIGHTING SHALL BE IN ACCORDANCE WITH CITY OF SCOTTSDALE EXTERIOR LIGHTING POLICY AND DSPM EXTERIOR LIGHTING REQUIREMENTS.
- NO FIXTURE IN FOOTHILLS OVERLAY ZONING SHALL BE MOUNTED HIGHER THAN 16 FEET.
- ALL EXTERIOR LIGHTING SHALL HAVE A KELVIN TEMPERATURE OF 3000 OR LESS.
- THE PRE-CURFEW LIGHTING DESIGN HOURS SHALL BE DEFINED AS DUSK TO 10:00 PM, AND THE POST-CURFEW LIGHTING HOURS SHALL BE DEFINED AS 10:00 PM TO DAWN. ALL EXTERIOR LIGHTS SHALL BE TURNED OFF DURING THE POST-CURFEW HOURS WITH THE EXCEPTION OF LIGHTS FOR SECURITY PURPOSES.
- A PROGRAMMABLE TIMER, AND PHOTOCELLS SHALL CONTROL THE PRE- AND POST-CURFEW LIGHTS; PHOTOCELLS SHALL BE MOUNTED ON THE NORTH SIDE OF THE BUILDING. THE PROGRAMMABLE TIMER MAY CONTAIN A MAXIMUM 1-HOUR MANUAL OVERRIDE WITH AN AUTOMATIC TURN OFF FOR AFTER HOURS, AND SPECIAL EVENT USE ONLY.
- ALL LIGHTING SHALL BE A FIXED POSITION FIXTURE OR THE DIRECTIONAL FUNCTION TO BE DISABLED SO IT CANNOT BE USED.



Designer
 Date: 02/28/2024
 Scale: Not to Scale
 Drawing No.
 Summary
 1 of 1

Symbol	Label	Image	Quantity	Manufacturer	Catalog Number	Description	Number Lamps	Lumens Per Lamp	Light Loss Factor	Wattage	Plot
D			3	Lithonia Lighting	WPX0 LED ALO-1 30K MVOLT	WPX0 LED, 850 Lumen setting, 3000K Setting, 120-277V	1	814	1	6,2384	
C			6	Lithonia Lighting	WPX1 LED P2 30K Mvolt	WPX1 LED wallpack, 3000lm 3000K color temperature 120-277 Volts	1	2749	1	23,26	

Statistics						
Description	Symbol	Avg	Max	Min	Max/Min	Avg/Min
Calc Zone #5	+	0.2 fc	4.7 fc	0.0 fc	N/A	N/A

21-DR-2002#2
STIPULATION SET
RETAIN FOR RECORDS
APPROVED

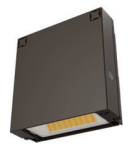
6/20/2024
 DATE APPROVED BY



WESTERN HERITAGE
 CONSULTING & ENGINEERING
 307.215.7430
 info@westernhce.com
 PO BOX 2117
 Mills, WY 82644



Job Number:
 23WHC802
 Sheet Number:
 C4.1



WPX0 LED Wall Pack

IP66, DLC, 5 YEAR WARRANTY

Category: _____
 Series: _____
 Notes: _____
 Type: _____

Introduction
 The WPX LED wall packs are energy-efficient, cost-effective, and aesthetically appealing solutions for both HID wall pack replacement and new construction opportunities. Available in four sizes, the WPX family delivers 850 to 9,200 lumens with a wide, uniform distribution.

The WPX0 full cut-off wall pack is an excellent above the door lighting solution. Reliable IP66 construction and excellent LED lumen maintenance ensure a long service life. Standard features such as Adjustable Lumen Output (ALO), color switching and switchable photocell make WPX0 ideal for any application.

Specifications
 Depth (D): 2"
 Height (H): 5.75"
 Width (W): 5.5"
 Weight: 2.5lbs

Ordering Information EXAMPLE: WPX0 LED ALO SWW2 MVOLT PE DDBXD

Series	Color Temperature	Voltage	Controls	Finish	
WPX0 LED ALO	850 - 1,650 Lumens	SWW2 3000K / 4000K / 5000K	MVIC 120V - 277V	PE Photocell (On/Off)	DBDD Dark Bronze

FEATURES & SPECIFICATIONS

INTENDED USE
 The WPX LED wall packs are designed to provide a cost-effective, energy-efficient solution for the one-for-one replacement of existing HID wall packs. The WPX0, WPX1, WPX2 and WPX3 are ideal for replacing up to 70W, 150W, 250W, and 400W HID luminaires respectively. WPX luminaires deliver uniform, wide distribution. WPX is rated for -40°C to 40°C.

CONSTRUCTION
 WPX feature a die-cast aluminum main body with optimal thermal management that both enhances LED efficiency and extends component life. The luminaires are IP66 rated, and sealed against moisture or environmental contaminants.

ELECTRICAL
 Light engine consists of high-efficiency LEDs and LED lumen maintenance of 180,000 hours. Color temperature (CCT) can be switched between 3000K, 4000K and 5000K with minimum CRI of 80. Electronic driver ensures system power factor >90% and THD <20%. The luminaire operates on MVOLT (120V - 277V) input.

A module inside the luminaire allows the installer to not only switch between CCTs, but also to adjust the lumen output and switch on and off the photocell (PE).

INSTALLATION
 WPX can be mounted directly over a standard electrical junction box. A port on the back surface allows for in-situ wiring on surfaces that don't have an electrical junction box. Wiring can be made in the integral wiring compartment in all cases. WPX is only recommended for installations with LEDs facing downwards.

LISTINGS
 CSA Certified to meet U.S. and Canadian standards. Suitable for wet locations. IP66 Rated. DesignLights Consortium® (DLC) Qualified product. Not all versions of this product may be DLC qualified. Please check the DLC Qualified Products List at www.designlights.org/2023 to confirm which versions are qualified.

WARRANTY
 5 year limited warranty. This is the only warranty provided and no other statements in this specification sheet create any warranty of any kind. All other express and implied warranties are disclaimed. Complete warranty terms located at: www.lithonia.com/support/warranty/terms-and-conditions.

Note: Actual performance may differ as a result of end-user environment and application. All values are design or typical values, measured under laboratory conditions at 25°C. Specifications subject to change without notice.

LITHONIA LIGHTING | One Lithonia Way • Conyers, Georgia 30012 • Phone: 1-800-755-SERV (7378) • www.lithonia.com | WPX0 LED Rev. 10/11/22

Performance Data

Electrical Load

Ald Setting	Input Power (W)	120V (A)	208V (A)	240V (A)	277V (A)
Ald 4	13.0	0.11	0.06	0.05	0.05
Ald 3	9.2	0.08	0.04	0.04	0.03
Ald 2	7.8	0.07	0.04	0.03	0.03
Ald 1	6.4	0.05	0.03	0.03	0.02

Projected LED Lumen Maintenance
 Data references the unregulated performance projections in a 25°C ambient, based on 6,000 hours of LED testing based per IESNA LM-80-08 and projected per IESNA TM-21-11.
 To calculate L70, use the lumen maintenance factor that corresponds to the desired number of operating hours below. For other lumen maintenance values, contact factory.

Operating Hours	L70	L80	L90
50,000	>8.91	>8.89	>8.86

Lumen Output


Ald Setting	Color Temperature	Lumen Output
Ald 4	3000K	1,591
	4000K	1,644
	5000K	1,667
Ald 3	3000K	1,164
	4000K	1,191
	5000K	1,225
Ald 2	3000K	974
	4000K	994
	5000K	1,025
Ald 1	3000K	814
	4000K	829
	5000K	859

Lumen Ambient Temperature (LAT) Multipliers
 Use these factors to determine relative lumen output for average ambient temperatures from 0-50°C (32-122°F).

Ambient	Ambient	Lumen Multiplier
0°C	32°F	1.027
5°C	41°F	1.023
10°C	50°F	1.018
15°C	59°F	1.012
20°C	68°F	1.006
25°C	77°F	1.000
30°C	86°F	0.993
35°C	95°F	0.986
40°C	104°F	0.979

Photometric Diagrams
 To see complete photometric report or download .ies files for this product, visit the Lithonia Lighting WPX LED homepage. Tested in accordance with IESNA LM-79 and LM-80 standards.

Switchable Features



LITHONIA LIGHTING | One Lithonia Way • Conyers, Georgia 30012 • Phone: 1-800-755-SERV (7378) • www.lithonia.com | WPX0 LED Rev. 10/11/22



CONTRACTOR SELECT

WPX LED Wall packs

The WPX LED wall packs are energy efficient, cost effective, and aesthetically appealing full cut-off solution for both new construction and HID wall pack replacement/renovation opportunities. Reliable IP66 construction and excellent LED lumen maintenance ensure a long service life.

FEATURES:

- Architectural design at very economical prices
- Energy efficient - payback in less than two years
- Wide range of configuration options available


Note: WPX3 lumen package and all the WPX configuration options are not included in the Contractor Select program. For more information, please visit WPX3 LED.



CONTRACTOR SELECT WPX SERIES LED Page 1 of 2

Luminaire	CCT	Lumens	Input Watts	Photocell	Finish	Voltage	Catalog Number	CI Code	SPC	Parcel Qty	Replaces Up To
WPX0	3000K / 4000K / 5000K	850 - 1,650	6.4-10W	Switchable On/Off	DARK BRONZE	120-277V	WPX0 LED ALO SWW2 MVOLT PE DDBXD M2	*276040	19638251806	280	70W Metal Halide
WPX1	4000K	2,300	24W	N/A	DARK BRONZE	120-277V	WPX1 LED P2 40K MVOLT DDBXD M4	*24339K	19304827049	160	150W Metal Halide
WPX2	4000K	6,000	47W	N/A	DARK BRONZE	120-277V	WPX2 LED 40K MVOLT DDBXD M2	*265563	19304827056	120	250W Metal Halide
							WPX2 LED 50K MVOLT DDBXD M2	*265566	19304827070	120	250W Metal Halide

More configurations are available. Click here to visit www.lithonia.com and search for WPX LED.



CONTRACTOR SELECT

Specifications

INTENDED USE:
 The WPX LED wall packs are designed to provide a cost-effective, energy-efficient solution for the one-for-one replacement of existing HID wall packs. The WPX0, WPX1, WPX2 and WPX3 are ideal for replacing up to 70W, 150W, 250W, and 400W HID luminaires respectively. WPX luminaires deliver a uniform, wide distribution. WPX is rated for -40°C to 40°C.

CONSTRUCTION:
 WPX feature a die-cast aluminum main body with optimal thermal management that both enhances LED efficiency and extends component life. The luminaires are IP66 rated, and sealed against moisture or environmental contaminants.

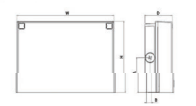
ELECTRICAL:
 Light engine consists of high-efficiency LEDs with a min LED lumen maintenance of 180,000 hours. Color temperature (CCT) options of 3000K, 4000K and 5000K with minimum CRI of 70 (80 for WPX0). Electronic drivers ensure system power factor >90% and THD <20%. All luminaires have 6kV surge protection (Note: WPX1 LED P1 package and WPX0 comes with a standard surge protection rating of 2,500).
 Note: The standard WPX LED wall pack luminaires come with field adjustable drive current feature. This feature allows tuning the output current of the LED drivers to adjust the lumen output (to dim the luminaires).

INSTALLATION:
 WPX can be mounted directly over a standard electrical junction box. A port on the back surface allows for in-situ wiring on surfaces that don't have an electrical junction box. WPX1, WPX2 and WPX3 come with three 1/2 inch conduit ports on three sides that allow for surface conduit wiring. Wiring can be made in the integral wiring compartment in all cases. WPX is only recommended for installations with LEDs facing downwards.

LISTINGS:
 CSA Certified to meet U.S. and Canadian standards. Suitable for wet locations. IP66 Rated. DesignLights Consortium® (DLC) Premium qualified product and DLC qualified product. Not all versions of this product may be DLC Premium qualified or DLC qualified. Please check the DLC Qualified Products List at www.designlights.org/2023 to confirm which versions are qualified.

WARRANTY:
 5 year limited warranty. This is the only warranty provided and no other statements in this specification sheet create any warranty of any kind. All other express and implied warranties are disclaimed. Complete warranty terms located at: www.lithonia.com/support/warranty/terms-and-conditions.

Note: Actual performance may differ as a result of end-user environment and application. All values are design or typical values, measured under laboratory conditions at 25°C. Specifications subject to change without notice.



Dimensions
 All dimensions are inches (centimeters) unless otherwise indicated.

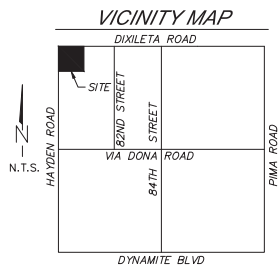
Luminaire	Height (H)	Width (W)	Depth (D)	Side Conduit Location		Weight
				A	B	
WPX0	5.75" (14.6 cm)	5.5" (14.0 cm)	2" (5.1 cm)	N/A	N/A	2.5 lbs (1.1 kg)
WPX1	8.1" (20.6 cm)	11.1" (28.3 cm)	3.2" (8.1 cm)	4.0"	0.6"	6.1 lbs (2.8 kg)
				0.6"	4.0"	6.1 lbs (2.8 kg)
WPX2	9.1" (23.1 cm)	13.1" (33.3 cm)	4.1" (10.5 cm)	4.5"	0.7"	8.1 lbs (3.7 kg)
				0.7"	4.5"	8.1 lbs (3.7 kg)
WPX3	9.5" (24.1 cm)	13.0" (33.0 cm)	13.7" (34.8 cm)	4.7"	0.7"	11.0 lbs (5.0 kg)
				0.7"	4.7"	11.0 lbs (5.0 kg)

LITHONIA LIGHTING | One Lithonia Way • Conyers, Georgia 30012 • Phone: 1-800-755-SERV (7378) • www.lithonia.com | CONTRACTOR SELECT WPX SERIES LED Page 2 of 2

PROJECT CONTACTS

OWNER
 VARGO QUARTER HORSES LLC
 12255 E PARAISO DR. LOT 5
 SCOTTSDALE, AZ 85255
 ATTN: J. MICHAEL VARGO
 PH: 614-205-8045
 EMAIL: MVARGO@VARGOMAIL.COM

WESTERN HERITAGE CONSULTING & ENGINEERING
 RYAN ALTENBURG
 PO BOX 2117
 MILLS, WY 82644
 RYAN@WESTERNHCE.COM



SITE DATA

A.P.N. ----- 216-70-005L
 SITE ADDRESS ----- 29607 N. HAYDEN RD.
 NET AREA ----- 383,691 S.F.
 PARCEL ZONING ----- R1-190 ESL FO
 EXISTING RESIDENCE ----- 4,833 S.F.
 EXISTING BARN ----- 8,899 S.F.
 EXISTING SHADES ----- 4,846 S.F.
 EXISTING SHED ----- 115 S.F.
 EXISTING COVD PEN ----- 3,386 S.F.
 EXISTING WALL ENCLOSURES ----- 8,066 S.F.
 NEW SHOP ----- 8,000 S.F.
 FUTURE BARN ----- 8,320 S.F.
 TOTAL ----- 46,183 S.F. OR 12%
 OPEN SPACE ----- 337,508 S.F.


LEGAL DESCRIPTION

PER TITLE REPORT THE NORTHWEST QUARTER OF THE NORTHWEST QUARTER OF THE NORTHWEST QUARTER OF SECTION 25, TOWNSHIP 5 NORTH, RANGE 4 EAST OF THE GILA AND SALT RIVER BASE AND MERIDIAN, MARICOPA COUNTY, ARIZONA.

EXTERIOR LIGHTING

- EXISTING EXTERIOR SITE LIGHTING TO REMAIN PER CASE 21-DR-2002 WITH NO MODIFICATIONS.
- LIGHTING SHALL BE IN ACCORDANCE WITH CITY OF SCOTTSDALE EXTERIOR LIGHTING POLICY AND DSPM EXTERIOR LIGHTING REQUIREMENTS.
- NO FIXTURE IN FOOTHILLS OVERLAY ZONING SHALL BE MOUNTED HIGHER THAN 16 FEET.
- ALL EXTERIOR LIGHTING SHALL HAVE A KELVIN TEMPERATURE OF 3000 OR LESS.
- THE PRE-CURFEW LIGHTING DESIGN HOURS SHALL BE DEFINED AS DUSK TO 10:00 PM, AND THE POST-CURFEW LIGHTING HOURS SHALL BE DEFINED AS 10:00 PM TO DAWN. ALL EXTERIOR LIGHTS SHALL BE TURNED OFF DURING THE POST-CURFEW HOURS WITH THE EXCEPTION OF LIGHTS FOR SECURITY PURPOSES.
- A PROGRAMMABLE TIMER, AND PHOTOCELLS SHALL CONTROL THE PRE- AND POST-CURFEW LIGHTS; PHOTOCELLS SHALL BE MOUNTED ON THE NORTH SIDE OF THE BUILDING. THE PROGRAMMABLE TIMER MAY CONTAIN A MAXIMUM 1-HOUR MANUAL OVERRIDE WITH AN AUTOMATIC TURN OFF FOR AFTER HOURS, AND SPECIAL EVENT USE ONLY.
- ALL LIGHTING SHALL BE A FIXED POSITION FIXTURE OR THE ORIGINAL FUNCTION TO BE DISABLED SO IT CANNOT BE USED.

21-DR-2022#2 STIPULATION SET RETAIN FOR RECORDS APPROVED

6/20/2024 DATE APPROVED BY 

WESTERN HERITAGE CONSULTING & ENGINEERING
 307.215.7430
 info@westernhce.com
 PO BOX 2117
 MILLS, WY 82644

WVF

Job Number: 23WHC802
 Sheet Number: C4.2

Case# 21-DR-2002#2
 VARGO QUARTER HORSES, LLC
 PHOTOMETRIC DETAIL
 CITY OF SCOTTSDALE, AZ